

LEGAL DESCRIPTION:

LOTS 1, 2, & 3, BLOCK 3 SKYLINE HEIGHTS  
ALBUQUERQUE, BERNALILLO COUNTY, NEW MEXICO

PARKING CALCULATIONS

TOTAL PARKING SPACES REQUIRED PER CODE:

TOTAL ASAP WINDOW REPAIR SHOP : 1,093.93 SF  
1,094 @ 8 / 1,000 SF = 9 SPACES

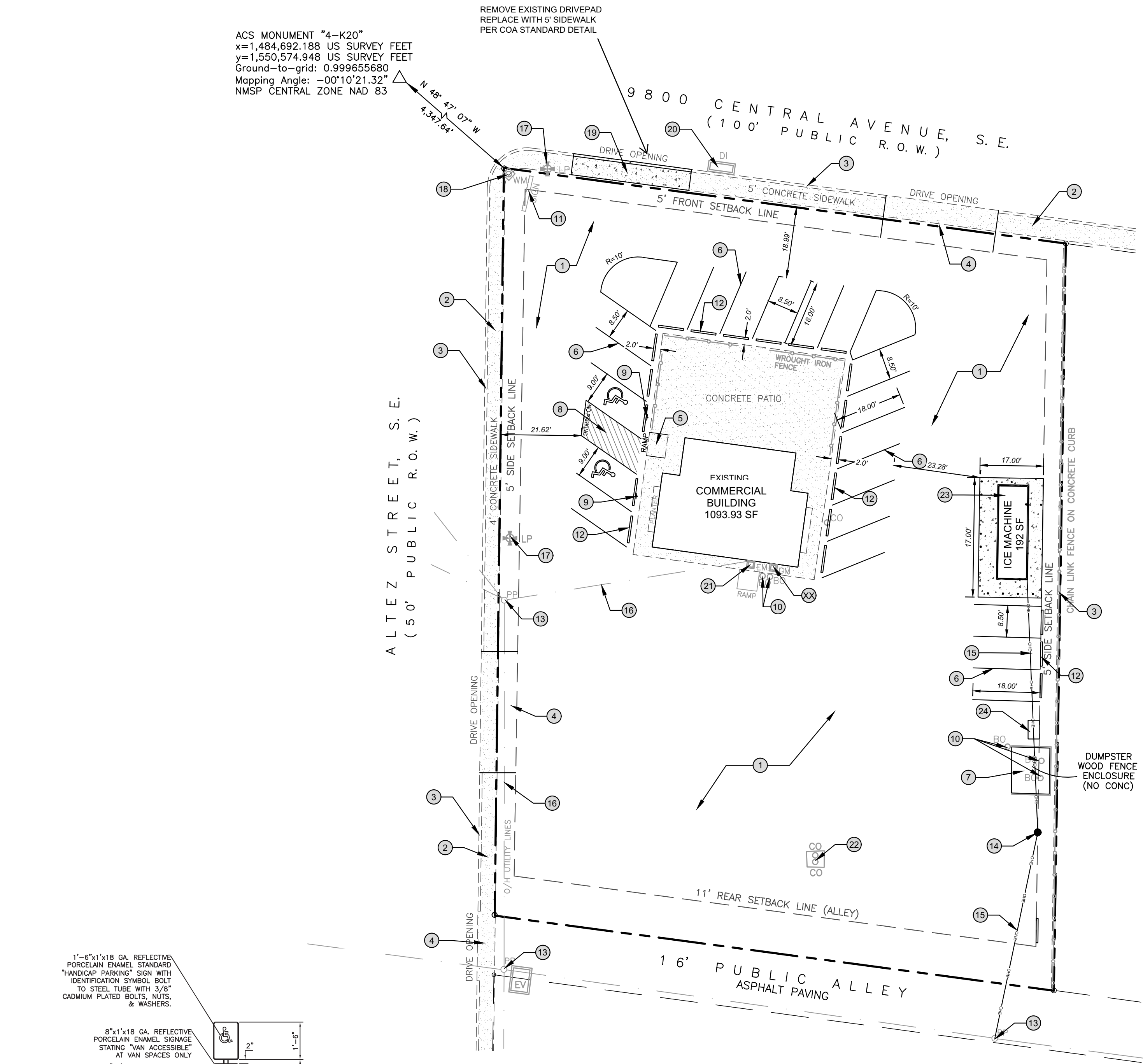
TOTAL PARKING STALLS 15  
HANDICAP PARKING STALL 2  
MOTORCYCLES PARKING 0  
BICYCLE PARKING 0

KEYED NOTES

- 1 ASPHALT PAVING
- 2 EXISTING CONCRETE SIDEWALK
- 3 EXISTING CONCRETE CURB
- 4 EXISTING CONCRETE DRIVEWAY
- 5 CONCRETE ACCESSIBLE RAMP
- 6 PARKING STRIPING
- 7 TRASH ENCLOSURE
- 8 ADA VAN ACCESSIBLE AISLE WITH "NO PARKING"
- 9 ADA ACCESSIBLE SIGN
- 10 BOLLARD
- 11 PYLON SIGN, BY OTHERS.
- 12 PARKING BUMPER
- 13 EXSITING POWER POLE
- 14 PROPOSED POWER POLE
- 15 PROPOSED POWER OVERHEAD POWER LINE 17' MIN HIGH
- 16 EXISTING OVERHEAD POWER LINE
- 17 EXISTING LIGHT POLE
- 18 EXISTING WATER METER
- 19 PROPOSED 5' SIDEWALK
- 20 EXISTING STORM DRAIN INLET
- 21 EXISTING ELECTRIC METER
- 22 EXISTING CLEAN OUTS
- 23 ICE MACHINE LOCATION
- 23 PROPOSED GREASE TANK

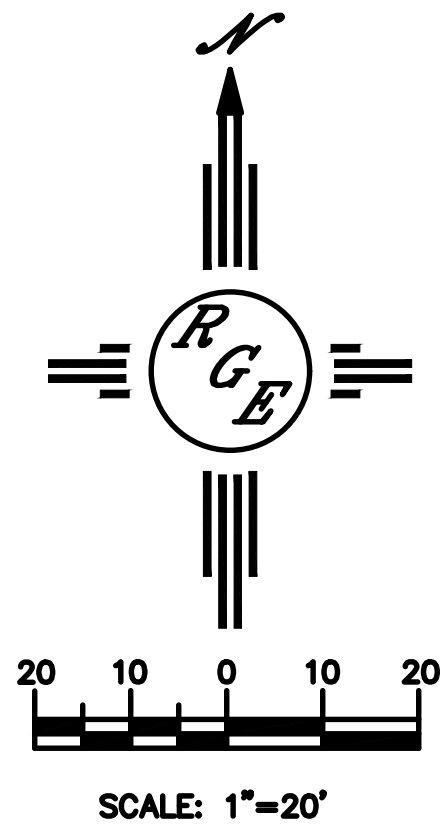
NOTES:

1. ALL BROKEN OR CRACKED SIDEWALK MUST BE REPLACED WITH SIDEWALK AND CURB AND GUTTER PER COA STANDARD DWGS 2415 AND 2430.
2. LANDSCAPING AND SIGNAGE WILL NOT INTERFERE WITH CLEAR SIGHT REQUIREMENTS. THEREFORE, SIGNS, WALLS, TREES AND SHRUBBERY BETWEEN 3 AND 8 FEET TALL (AS MEASURED FROM THE GUTTER PAN) WILL NOT BE ACCEPTABLE IN THIS AREA.
3. THE ADA ACCESS AISLES SHALL HAVE THE WORDS "NO PARKING" IN CAPITAL LETTERS, EACH OF WHICH SHALL BE AT LEAST ONE FOOT HIGH AND AT LEAST TWO INCHES WIDE, PLACED AT THE REAR OF THE PARKING SPACE SO AS TO BE CLOSE TO WHERE AN ADJACENT VEHICLE'S REAR TIRE WOULD BE PLACED. (66-1-4.1.B NMSA 1978)



CAUTION:

EXISTING UTILITIES ARE NOT SHOWN.  
IT SHALL BE THE SOLE RESPONSIBILITY  
OF THE CONTRACTOR TO CONDUCT ALL  
NECESSARY FIELD INVESTIGATIONS PRIOR  
TO ANY EXCAVATION TO DETERMINE THE  
ACTUAL LOCATION OF UTILITIES & OTHER  
IMPROVEMENTS.



ENGINEER'S SEAL	LOTS 1, 2, & 3, BLOCK 3 SKYLINE HEIGHTS 9800 CENTRAL AVE.	DRAWN BY DEM
DAVID SOULE NEW MEXICO REGISTERED PROFESSIONAL ENGINEER 14522	TCL PLAN	DATE 3-3-24
3/5/24	Rio Grande Engineering	9800 CENTRAL AVE.DWG
DAVID SOULE P.E. #14522		SHEET # C1
		JOB #