

*Mayor Timothy M. Keller*

**Atef A. Hanna, P.E**  
**Beacon Civil Engineering**  
**8345 Gunn Hwy**  
**Tampa, Florida 33626**

Dear Mr. Hanna,

PO Box 1293

Albuquerque

- NM 87103



# CITY OF ALBUQUERQUE

Planning Department  
Alan Varela, Director

Mayor Timothy M. Keller



Please relocate the ADA parking space to it's originally approved location as it is adjacent to an ADA pathway to insure safety and efficiency.

PO Box 1293

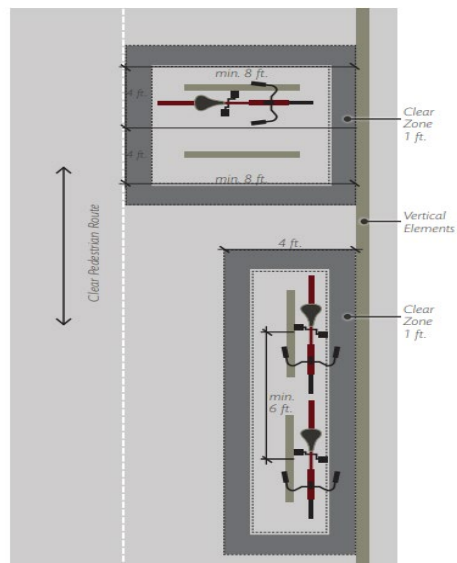
## 2. Anchor down Bike Rack.

FIGURE 7.4.115 Bicycle Parking Stall Layout Options

Albuquerque

NM 87103

www.cabq.gov



Once these corrections are complete, email pictures to [malnajar@cabq.gov](mailto:malnajar@cabq.gov) for release of Final CO.

# CITY OF ALBUQUERQUE

*Planning Department*  
Alan Varela, Director



*Mayor Timothy M. Keller*

If you have any questions, please contact me at (505) 924-3675.

Sincerely,

*Marwa Al-najjar*

Marwa Al-najjar  
Associate Engineer, Planning Dept.  
Development Review Services

PO Box 1293

Albuquerque

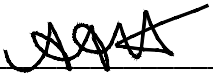
NM 87103

[www.cabq.gov](http://www.cabq.gov)

## TRAFFIC CERTIFICATION

I, ATEF A. HANNA, NMPE NUMBER 27436, OF THE FIRM BEACON CIVIL ENGINEERING, LLC., HEREBY CERTIFY THAT THIS PROJECT IS IN SUBSTANTIAL COMPLIANCE WITH AND IN ACCORDANCE WITH THE DESIGN INTENT OF THE APPROVED SITE PLAN DATED 2023-06-28. I FURTHER CERTIFY THAT I HAVE VISITED THE PROJECT SITE. THIS CERTIFICATION IS SUBMITTED IN SUPPORT OF A REQUEST FOR A CERTIFICATE OF OCCUPANCY.

THE RECORD INFORMATION PRESENTED HEREON IS NOT NECESSARILY COMPLETE AND INTENDED ONLY TO VERIFY SUBSTANTIAL COMPLIANCE OF THE TRAFFIC ASPECTS OF THIS PROJECT. THOSE RELYING ON THE RECORD DOCUMENT ARE ADVISED TO OBTAIN INDEPENDENT VERIFICATION OF ITS ACCURACY BEFORE USING IT FOR ANY OTHER PURPOSE.

  
\_\_\_\_\_  
Atef A. Hanna, NMPE 27436

05/27/25

\_\_\_\_\_  
Date



