

CITY OF ALBUQUERQUE



August 6, 2019

David Soule
Rio Grande Engineering
PO BOX 93924
Albuquerque NM 87199

Re: 224 Muriel
Traffic Circulation Layout
Engineer's/Architect's Stamp 08-05-2019 (L21D072)

Dear Mr. Soule

The TCL submittal received 08-05-2019 is approved for Building Permit. A copy of the stamped and signed plan will be needed for each of the building permit plans. Please keep the original to be used for certification of the site for final C.O. for Transportation.

When the site construction is completed and an inspection for Certificate of Occupancy (C.O.) is requested, use the original City stamped approved TCL for certification. Redline any minor changes and adjustments that were made in the field. A NM registered architect or engineer must stamp, sign, and date the certification TCL along with indicating that the development was built in "substantial compliance" with the TCL. Submit this certification, the TCL, and a completed Drainage and Transportation Information Sheet to front counter personnel for log in and evaluation by Transportation.

Once verification of certification is completed and approved, notification will be made to Building Safety to issue Final C.O. To confirm that a final C.O. has been issued, call Building Safety at 924-3690.

Sincerely,

Ernest Armijo, P.E.
Senior Engineer, Planning Dept.
Development Review Services

Mojgan Maadandar, E.I.
Associate Engineer, Planning Dept.
Development Review Services

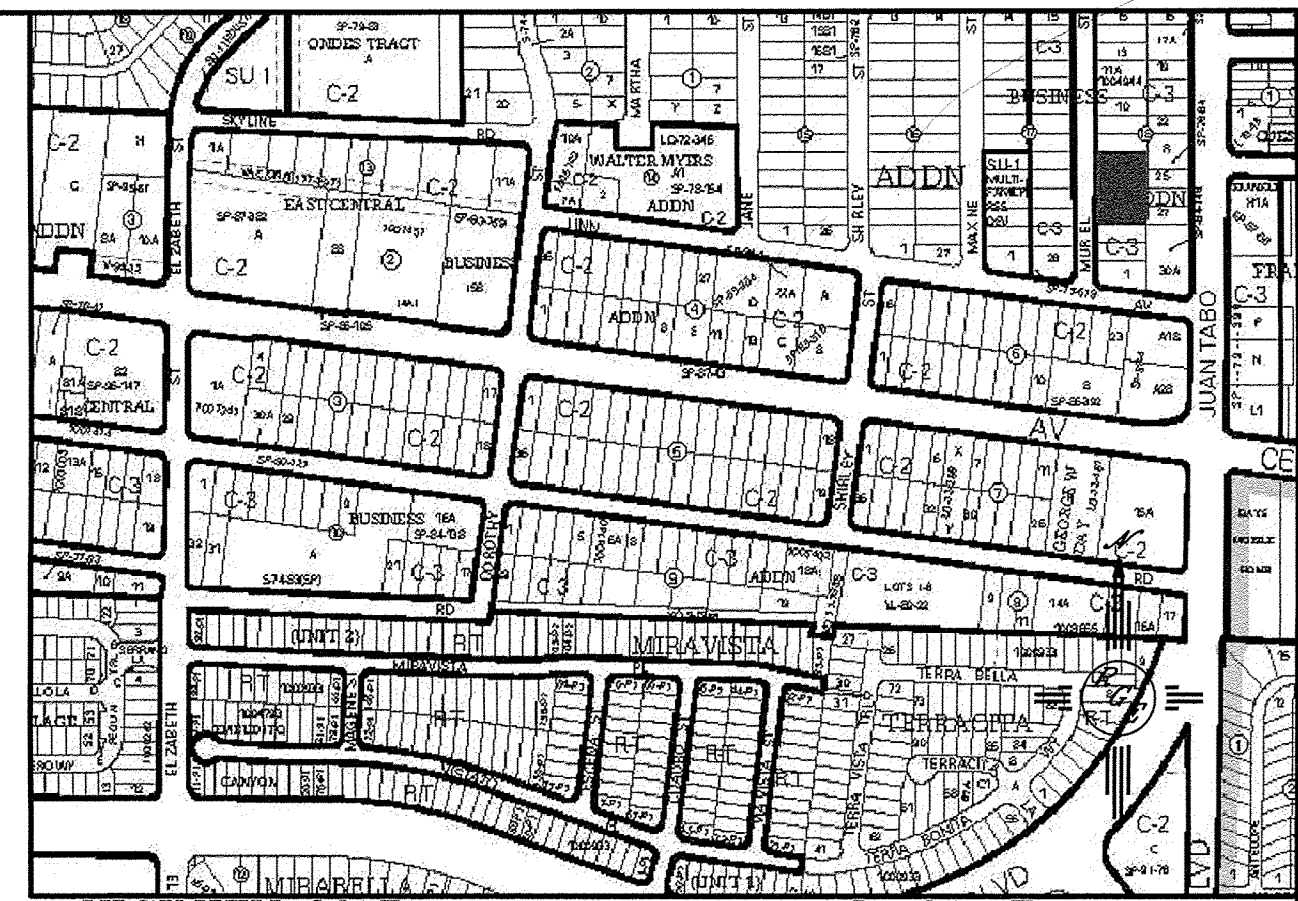
\MM via: email
C: CO Clerk, File

PO Box 1293

Albuquerque

NM 87103

www.cabq.gov



LEGAL DESCRIPTION:

LOT 7 BLOCK 18 EAST CENTRAL BUSINESS ADDITION

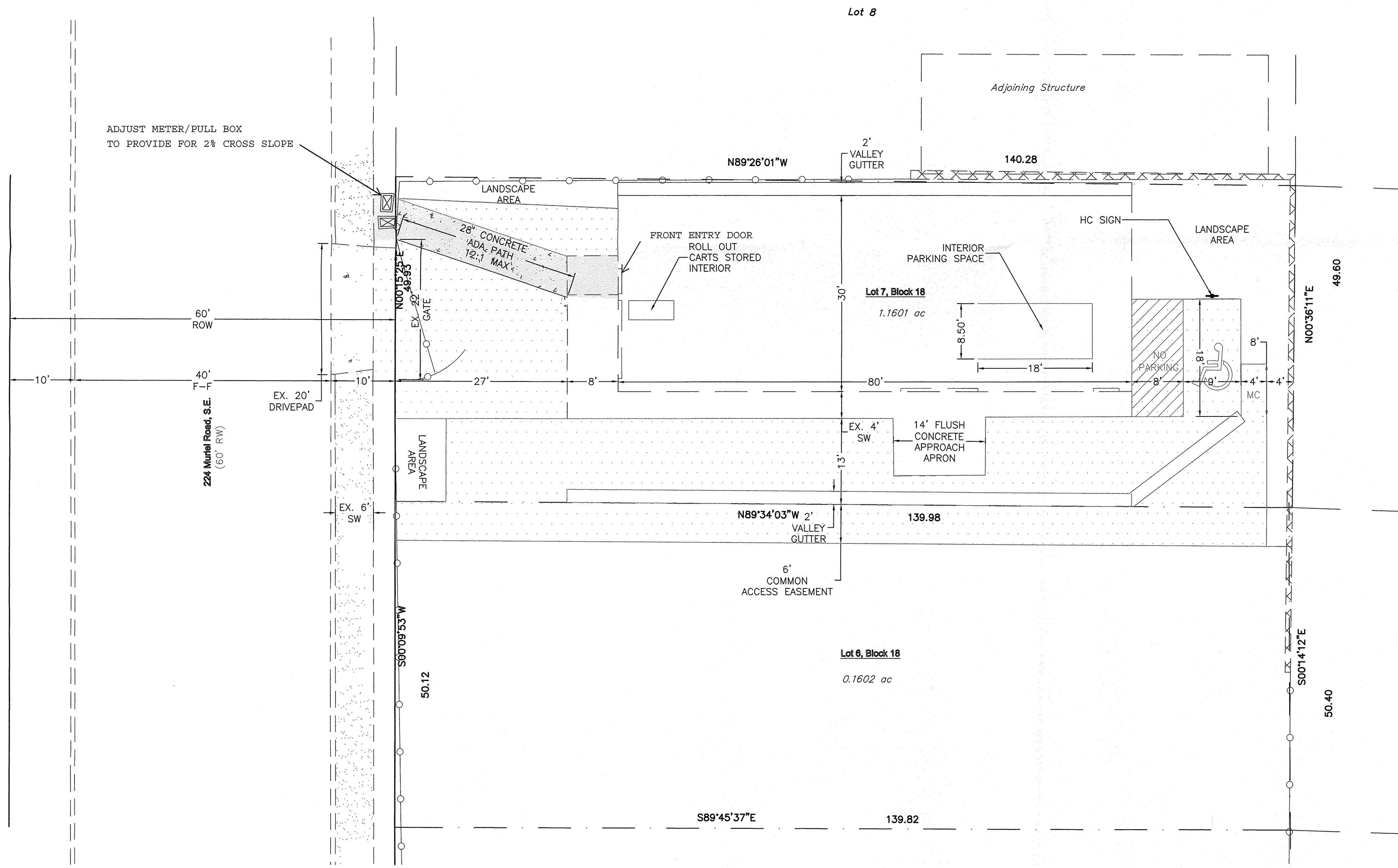
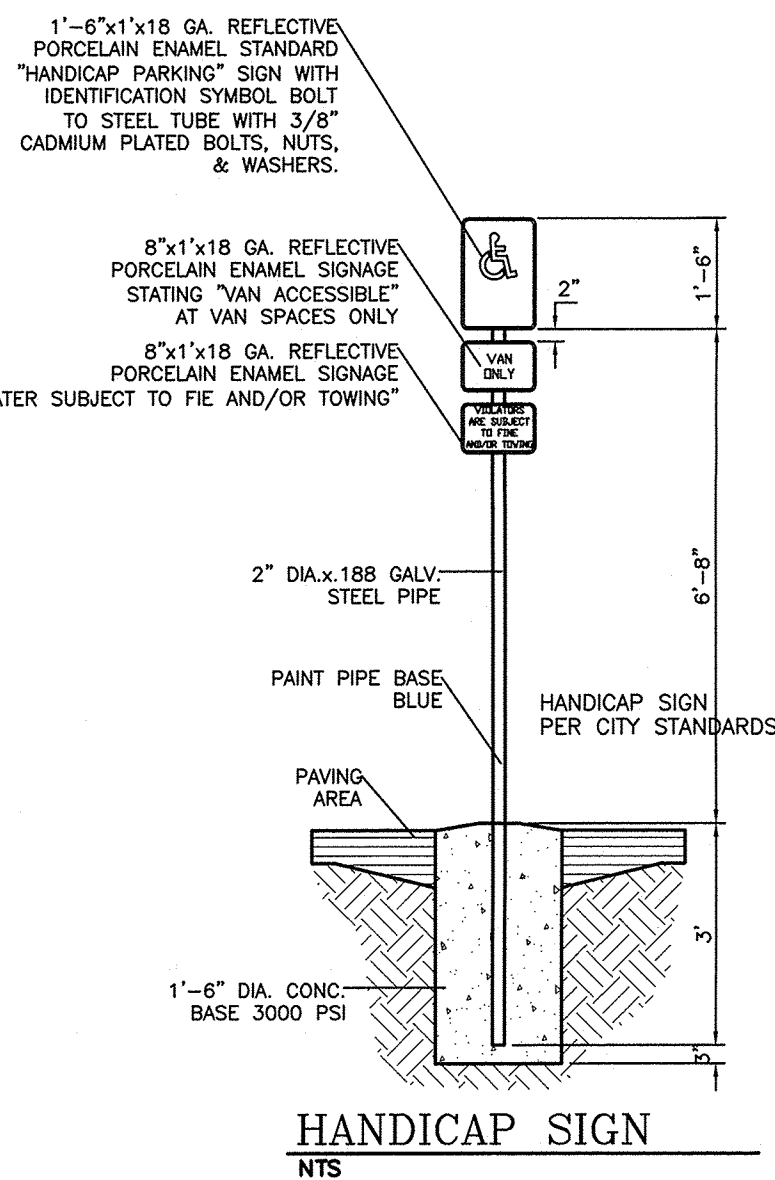
LEGEND

- BOUNDARY
- EASEMENT
- RIGHT-OF-WAY
- PROPOSED CURB
- EXISTING CURB AND GUTTER
- EXISTING SIDEWALK
- NEW 2" AC PAVING

TRAFFIC CIRCULATION LAYOUT APPROVED

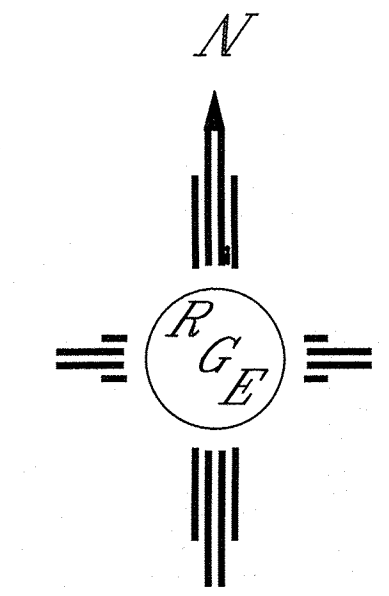
Signed: 8/6/19 Date: 8/6/19

ALL WHEELCHAIR RAMPS LOCATED WITHIN THE PUBLIC RIGHT OF WAY MUST HAVE TRUNCATED DOMES.



SITE DATA

ZONING	MXH
BUILDING SIZE	2400 SF
PARKING	
WAREHOUSE/WHOLESALE	1 SPACE/2000 SF=2 SPACES
	2 SPACES REQUIRED
	2 SPACES PROVIDED (1 SPACE INTERIOR TO BUILDING)
HANDICAP PARKING	1 REQUIRED 1 PROVIDED
MOTORCYCLE PARKING	1 REQUIRED 1 PROVIDED



ENGINEER'S SEAL	224 Muriel Road, S.E.	DRAWN BY WCWJ
DAVID SOULE NEW MEXICO REGISTERED PROFESSIONAL ENGINEER 8/5/19	TRAFFIC CONTROL LAYOUT	DATE 7-17-19
DAVID SOULE P.E. #14522	Rio Grande Engineering 1606 CENTRAL AVENUE SE SUITE 201 ALBUQUERQUE, NM 87106 (505) 872-0999	2109061-LAYOUT-7-17-19
		SHEET #
		JOB # 2109061