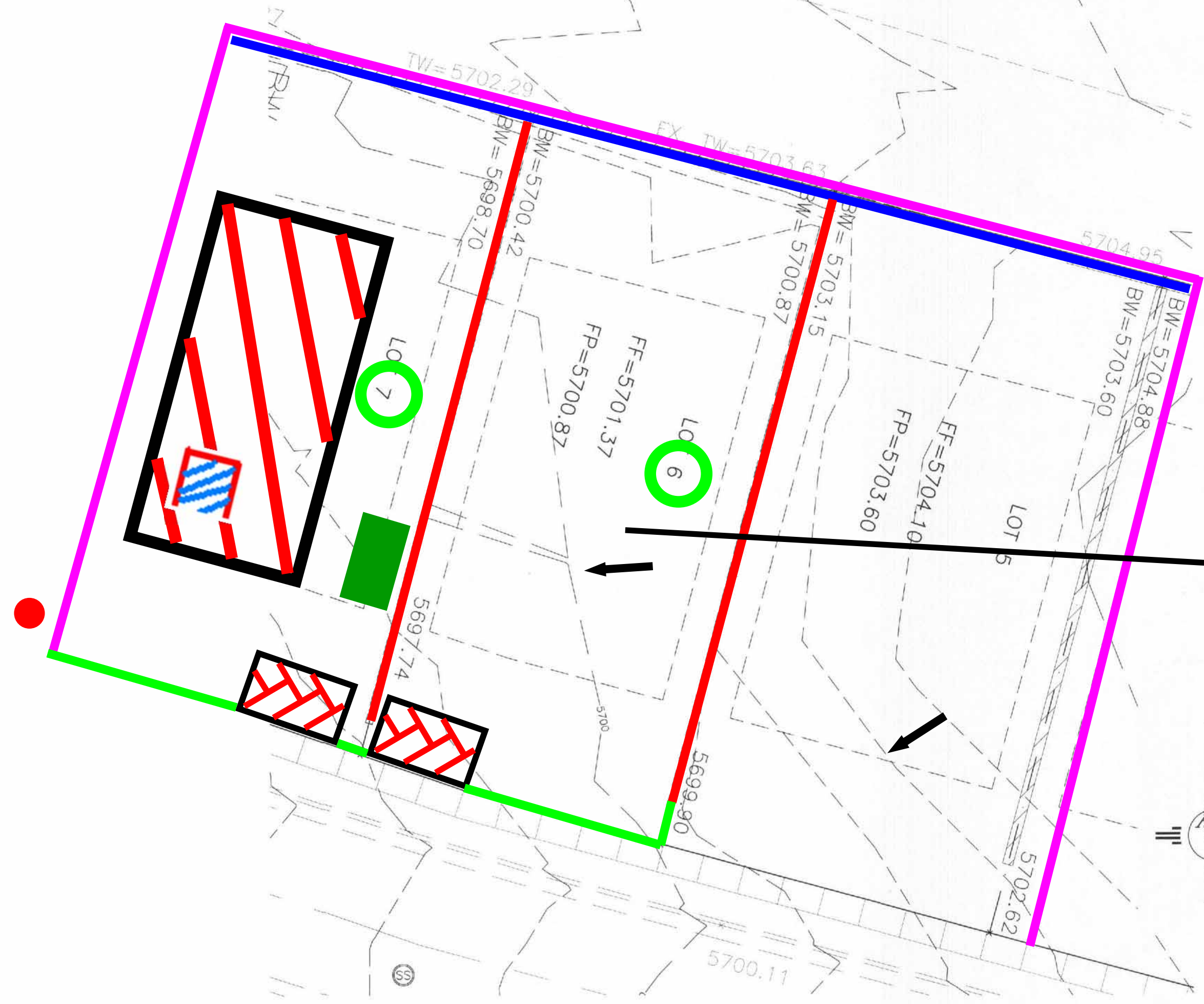
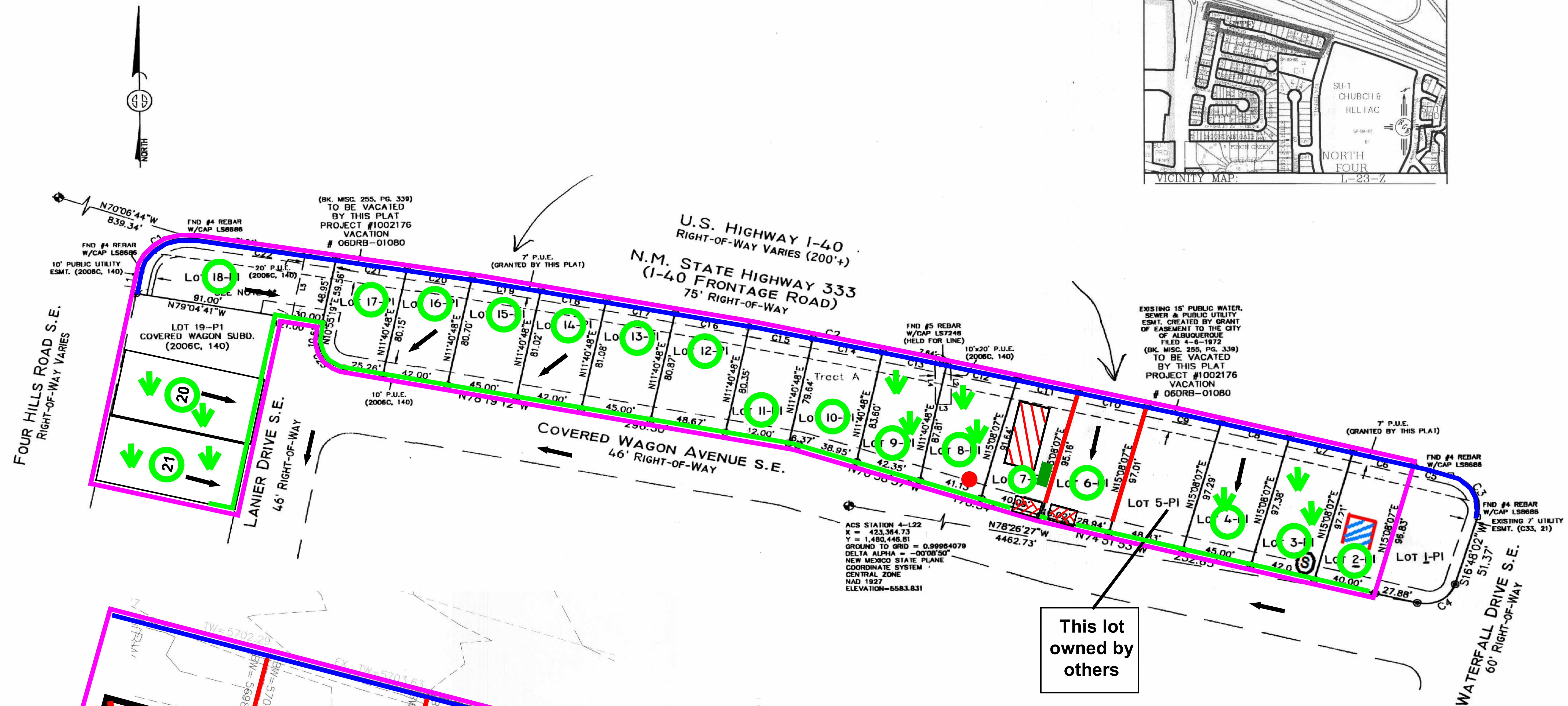
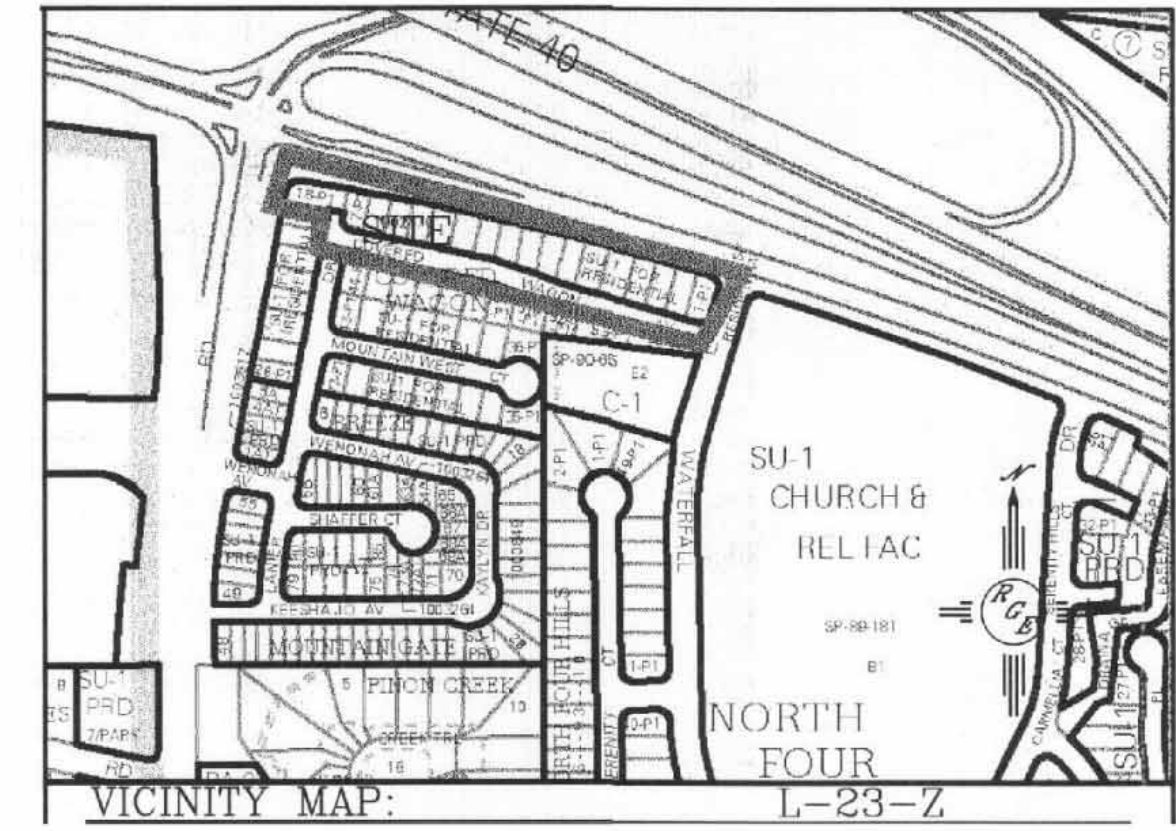
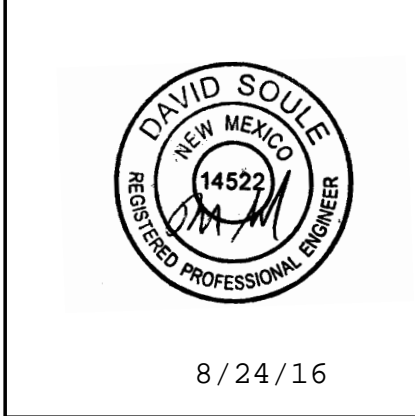


Inspections Plus, Inc.

Engineer Stamp



Note:  
Typical BMPs for  
a lot under  
construction.

**Legend**

**Erosion Sediment Control Plan**

- Project Perimeter & Disturbed Area
- Silt Fence
- Block Wall
- Retaining Wall
- Pre Flow & Post Flow
- Outfall
- Posting Sign
- Preserved Vegetation
- Staging Area
- Stabilized Construction Entrance
- Trash Receptacle
- Chemical Toilet
- Concrete Washout
- Cut Back @ Curb
- Lots in plan

**Covered Wagon Subdivision**

Receiving Waters: Tijeras Arroyo is located 2 miles to the South.

Critical Area: Rio Grande

Impairments: Nutrient Eutrophication

Grade: Before and After 1% - 3%