

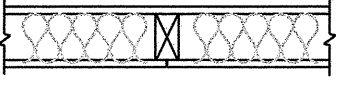
KEYED NOTES

- 1 PROVIDE GRAB BARS FOR EACH WATER CLOSET. PROVIDE 2" SOLID BLOCKING BEHIND GRAB BARS AND BACKING FOR ANY FUTURE GRAB BARS OR SEATS. PROVIDE A CLEANABLE, WATER RESISTANT AND NON-ABSORBANT WALL FINISH (IE FRP) ADJACENT TO AND BEHIND TOILET AREA.
- 2 MIN. 20"x30" ATTIC ACCESS PANEL.
- 3 ROLL-IN SHOWER. SEE PLUMBING SCHEDULE AND COORDINATE ROUGH-IN FRAMING WITH SPECIFIED UNIT. RE: A-5.0 FOR THRESHOLD DETAIL.
- 4 (5) SHELVES
- 5 SEMI-RECESSED FIRE EXTINGUISHER CABINET MEETING ALL REQUIREMENTS OF TEXAS FIRE CODES.
- 6 GAS OR ELECTRIC SERVICE.
- 7 THRESHOLD NOT TO EXCEED 0.5" IN HEIGHT.
- 8 MISCELLANEOUS STORAGE, RECREATION STORAGE AND SUPPLY.
- 9 BI-LEVEL DRINKING FOUNTAIN.
- 10 FIRE CONTROL PANEL.
- 11 LINEN STORAGE.
- 12 SHOWER CONTROL LOCATION WITH TEMPERATURE CONTROL LOCATED AT THIS END.
- 13 WATER HEATERS
- 14 CONCRETE SIDEWALK
- 15 HAND WASH SINK W/SINGLE LEVER FAUCET MOUNTED IN COUNTER TOP WITH 27" HIGH X 17" DEEP MIN. OPEN KNEE INSUL. WRAP ALL PIPES.
- 16 SALON SINK.
- 17 ADA TRANSFER SHOWER COORDINATE ROUGH-IN WITH PLUMBER W/ 30" X 18" X 17" - SEE PLUMBING SCHEDULE. SEE SHEET A-5.0 & E FOR THRESHOLD DETAILS.
- 18 STORAGE FOR HOUSEKEEPING SUPPLIES.
- 19 SMOOTH WASHABLE WALLS AND CEILING IN KITCHEN, TOILET, LAUNDRY BATH ROOMS AND JANITOR ROOM. FLOORS ARE TO BE WATER TIGHT, HOMOGENOUS WITH COVED BASE AND TIGHTLY SEALED SEAMS.
- 20 LAUNDRY SINK
- 21 PROVIDE LOCKED STORAGE IN REFRIGERATOR FOR MEDICATIONS THAT REQUIRE REFRIGERATION.
- 22 FOOD PREP SINK.
- 23 POT SINK.
- 24 COMMON ADA BATH.
- 25 CLOTHES RODS AND SHELVES SHALL BE A MAXIMUM OF 54" AFF FOR A SIDE APPROACH, WHERE THE DISTANCE FROM THE WHEELCHAIR TO THE CLOTHES ROD OR SHELF EXCEEDS 10"
- 26 UNDER COUNTER DISHWASHER
- 27 CLASS K RATED PORTABLE FIRE EXTINGUISHER. IN RECESSED F.E. CABINET.
- 28 MAINTAIN PLAN 10' OR MORE TO NEXT PHASES OF CONSTRUCTION TO ELIMINATE NEED FOR 1 HR. WALL ASSEMBLY.
- 29 LAUNDRY ROOM CEILINGS TO BE 1-HR RATED CEILING ASSEMBLY PER GA FILE NUMBER 2602, (2) LAYERS 5/8" TYPE "X".
- 30 LOCKERS FOR EMPLOYEES.
- 31 PROVIDE PAPER TOWEL AND HAND SOAP DISPENSER AT SINK.
- 32 PROVIDE HANGER FOR MOPS.

WALL TYPES LEGEND

- W1 2X6 STUD FRAMING @ 16" O.C. WITH R-19 BATT INSULATION 5/8" GYP. BD. @ INTERIOR AND 1/2" OSB/PLY SHEATHING WITH VENEER STONE WAINSCOT AND STUCCO ABOVE EXTERIOR.
- W2 2X STUD FRAMING @ 24" O.C. WITH SOUND BATT INSULATION (TYPICAL) AND 5/8" GYP. BD. EACH SIDE.
- W3 1-HOUR RATED WALL ASSEMBLY PER GA FILE NUMBER WP 3605 (UL U309) WITH SOUND BATT INSULATION.
- W4 1/2-HOUR RATED WALL ASSEMBLY 5/8" GYP BOTH SIDES

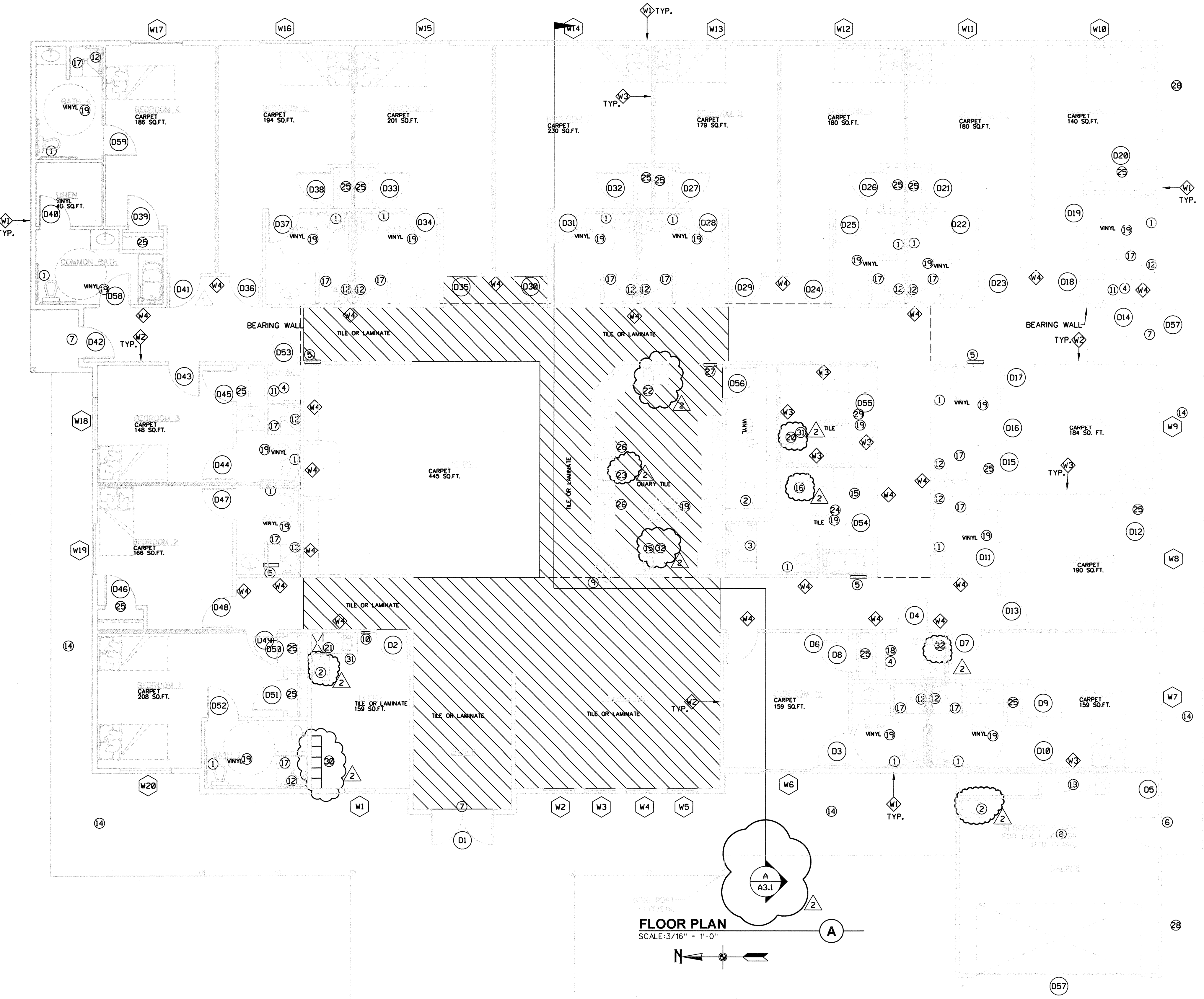
RATED WALL ASSEMBLY



GA FILE NO. WP 3605 (UL U309)

5/8" TYPE X GYPSUM BOARD APPLIED HORIZONTALLY OR VERTICALLY TO EACH SIDE OF 2x4 (MIN.) WOOD STUDS @ 24" O.C. w/ 6d COATED NAILS, 1 7/8" LONG, .0915" SHANK, 1/4" HEADS, 7" O.C. @ EDGES, JOINTS OF SQUARE EDGE, BEVEL EDGE OR PREDECORATED WALL BOARD MAY BE LEFT EXPOSED. JOINTS STAGGERED 24" ON OPPOSITE SIDES.

PER SECTION 420: SEPARATION WALLS REQUIRED w/ 1-HR FIRE PARTITIONS PER SECTION 708; HORIZONTAL SEPARATION REQUIRED PER SECTION 711 (IN CONJUNCTION WITH 709.4 CONTINUITY OF WALL REQUIREMENTS, WHICH REQUIRES FIRE BLOCKING OR DRAFT STOPPING IN ACCORDANCE WITH SECTIONS 717.2 & 717.3 WITH EXCEPTION PER 709.4-6 WHICH ALLOWS A FIRE SPRINKLER SYSTEM IN THE ATTIC SPACE IN CONFORMANCE OF 903.3.1.2; EVEN WITH 903.3.1.2 FIRE SPRINKLER SYSTEM IN ATTIC SPACE, NO ATTIC AREA OVER 3,000sf IS ALLOWED AND THUS SHOULD BE DRAFT STOPPED w/ (1) LAYER 1/2" GYP. BD. APPLIED TO ONE SIDE OF A TRUSS



FLOOR PLAN

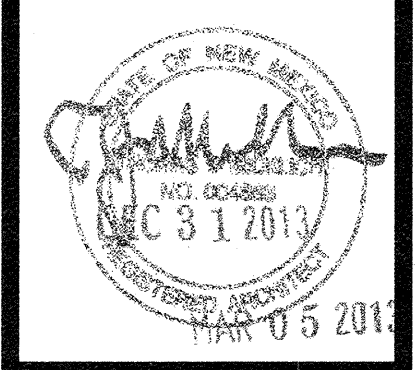
SCALE: 3/16" = 1'-0"

REVISIONS		BY
1	CITY REVIEW	AJ
2	CITY REVIEW	SM

DRA

DESIGN RESOURCES ARCHITECTS INC.

1014 S. LA POINTE STREET
BOISE, IDAHO 83706
208.343.5511
www.desresarch.com
administrator@desresarch.com



BEEHIVE HOMES

QUALITY SENIOR LIVING

ENGINEERING
MERIDIAN, ID 83642
PH: (208) 888-7145
FAX: (208) 888-7165
richard@karchnaengineering.com

FOUR HILLS BEEHIVE

NEW MEXICO

PAGE TITLE

FLOOR PLAN

DRAWN
AJ/SM

CHECKED
RTK

DATE
JANUARY, 2013

SCALE
AS NOTED

JOB NO.
12-44

SHEET

A2.2

SHEETS

CITY OF ALBUQUERQUE
BUILDING & SAFETY

JUL 16 2013

13.C
PLAN CHECK SECTION