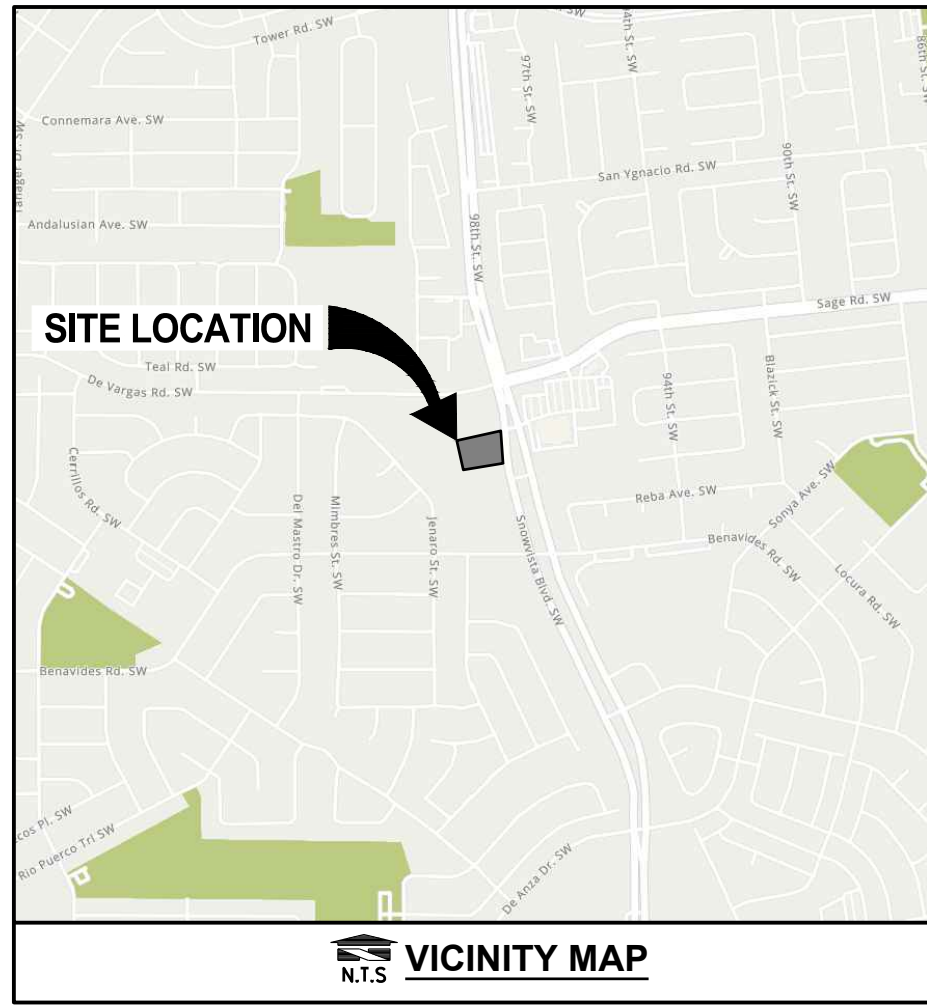
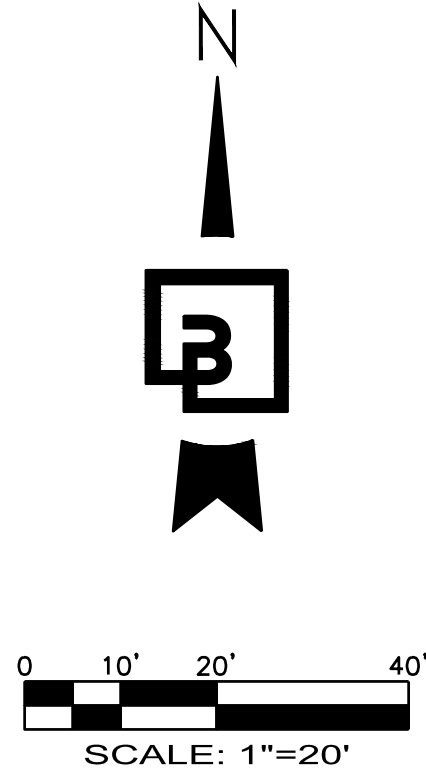
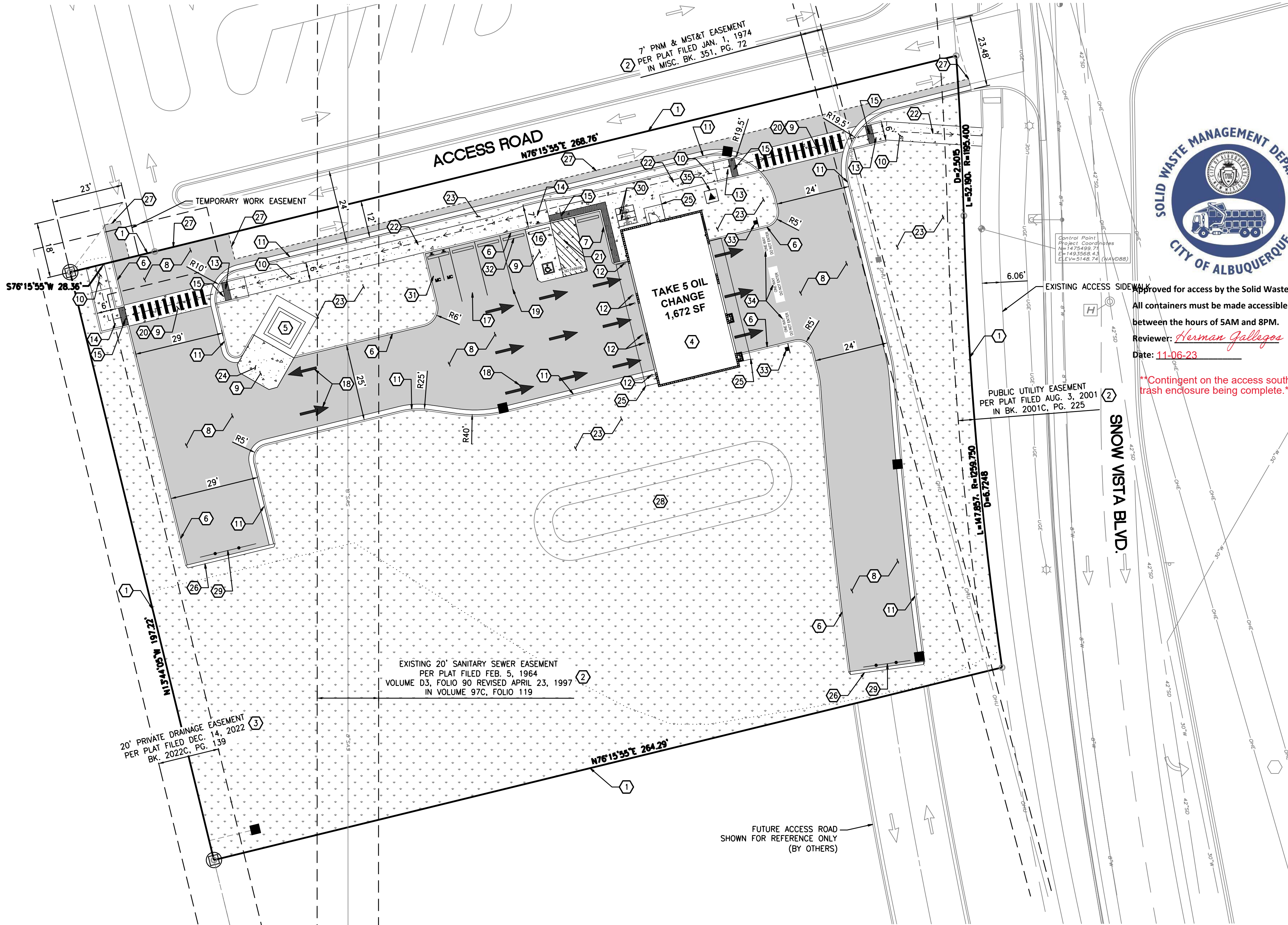




Know what's below.  
Call before you dig.  
Dial 811

# TAKE 5 OIL CHANGE - ALBUQUERQUE, NM SITE PLAN



PARKING CALCULATIONS:	
REQUIRED:	1 SPACE/1000 SF OF GFA
	2 REGULAR PARKING SPACES
	3 BICYCLE PARKING SPACES
	1 MOTORCYCLE PARKING SPACE
PARKING SPACES PROVIDED:	4 REGULAR
	1 ADA/VAN ACCESSIBLE SPACE
	2 MOTORCYCLE SPACES
	3 BICYCLE SPACES

## CONSTRUCTION NOTES:

- EXISTING PROPERTY LINE, TYPICAL.
- EXISTING PUBLIC UTILITY EASEMENT, TYPICAL.
- EXISTING PRIVATE UTILITY EASEMENT, TYPICAL.
- LOCATION OF BUILDING AS NOTED; CONFIRM ALL DIMENSIONS AND REQUIREMENTS WITH ARCHITECTURAL AND STRUCTURAL DRAWINGS.
- LOCATION OF TRASH ENCLOSURE WITH CONCRETE PAD; REFER TO ARCHITECTURAL AND STRUCTURAL PLANS FOR ADDITIONAL INFORMATION.
- CONSTRUCT CONCRETE BARRIER CURB PER DETAIL 5/C5.0.
- CONSTRUCT CONCRETE FLUSH CURB.
- CONSTRUCT ASPHALT PAVING, SECTION PER DETAIL 9/C5.0, TYPICAL.
- CONSTRUCT CONCRETE PAVING, SECTION PER DETAIL 10/C5.0, TYPICAL.
- CONSTRUCT CONCRETE SIDEWALK, WIDTH VARIES. SECTION PER DETAIL 3 AND 4/C5.2, TYPICAL.
- CONSTRUCT CONCRETE CURB AND GUTTER, PER DETAIL 6/C5.0, TYPICAL.
- INSTALL GUARD POST PER DETAIL 6/C5.2 REFER TO ARCHITECTURAL PLANS FOR ADDITIONAL INFORMATION.
- CONSTRUCT ACCESSIBILITY-COMPLIANT PERPENDICULAR CURB RAMP PER CITY OF ALBUQUERQUE STANDARD DRAWING NO. 2442/SHEET C6.0.
- CONSTRUCT ACCESSIBILITY-COMPLIANT PARALLEL CURB RAMP PER CITY OF ALBUQUERQUE STANDARD DRAWING NO. 2443/SHEET C6.0.
- INSTALL DETECTABLE WARNING PER CITY OF ALBUQUERQUE STANDARD DRAWING NO. 2446/SHEET C6.0. CONTRACTOR TO FIELD VERIFY SLOPES DO NOT EXCEED 1.5% CROSS SLOPE.
- INSTALL VAN ACCESSIBLE PARKING STALL AND SIGNAGE PER DETAIL 1/C5.0. REFER TO DETAIL FOR 2/C5.0 FOR INTERNATIONAL SYMBOL OF ACCESSIBILITY. REFER TO DETAIL 1/C5.2 FOR SIGN FOOTINGS. ADA SIGNAGE TO INCLUDE LANGUAGE "VIOLATORS ARE SUBJECT TO A FINE AND/OR TOWING" PER 66-7-352.4C NMSA.
- STANDARD PARKING SPACE, TYPICAL.
- PAINT DIRECTIONAL ARROWS WHERE SHOWN PER DETAIL 3/C5.0, TYPICAL.
- PAINT 4" WIDE WHITE REFLECTIVE PAINT PARKING STALL STRIPES, TYPICAL; ALL STRIPING TO CONFORM WITH AUTHORITY HAVING JURISDICTION REQUIREMENTS.
- PAINT CONTINENTAL STYLE PEDESTRIAN CROSSWALK STRIPING; 1 FOOT WIDE STRIPES AT 2 1/2' FEET ON CENTER.
- PAINT 4" WIDE STRIPED AREA AS SHOWN, 24" O.C. SAFETY WHITE, TYPICAL.
- ACCESSIBLE ROUTE. SEE ACCESSIBLE PATH NOTE THIS SHEET.
- LANDSCAPING AREA; REFER TO LANDSCAPE PLANS FOR ADDITIONAL INFORMATION.
- PROPOSED TRASH LOADING ZONE, COORDINATE APPROACH AND ORIENTATION OF TRASH ENCLOSURE W/ LOCAL REFUSE SERVICE PROVIDER.
- INSTALL CANOPY. SEE ARCHITECTURAL PLANS FOR DETAILS. CONFIRM ALL DIMENSIONS AND REQUIREMENTS WITH ARCHITECTURAL AND STRUCTURAL DRAWINGS.
- CONSTRUCT ASPHALT RAISED EDGE CURB PER DETAIL 8/C5.0.
- APPROXIMATE LOCATION OF NEAT SAW CUT LINE. PROVIDE HOT TAR SEAL AT ALL JOINTS.
- LOCATION OF STORMWATER QUALITY POND. REFER TO SHEET C3.0 FOR ADDITIONAL INFORMATION.
- INSTALL TEMPORARY TYPE III BARRICADES PER DETAIL 7/C5.0.
- INSTALL BICYCLE RACKS PER DETAIL 7/C5.2.
- MOTORCYCLE PARKING SPACE, TYPICAL. INSTALL R7-5-16 SIGNAGE WITH "MOTORCYCLE PARKING ONLY" LETTERING.
- INSTALL CONCRETE WHEEL STOP PER DETAIL 4/C5.0.
- INSTALL SIGN PER MUTCD DETAIL R5-1 WITH "DO NOT ENTER" LETTERING.
- PAINT "ONE WAY" AND "DO NOT ENTER" LETTERING.
- CONSTRUCT CONCRETE PAD FOR NEW TRANSFORMER.

## LEGEND

BUILDING LINE	
EXISTING CURB TO REMAIN	
PROPOSED CURB	
PROPOSED LANDSCAPING	
PROPOSED ASPHALT	
PROPOSED CONCRETE	

## PARKING NOTE

NO CONTRACTOR OR EMPLOYEE MAY STORE, OR PERMIT TO BE STORED, A COMMERCIAL OR CONSTRUCTION VEHICLE/TRUCK; OR PERSONAL VEHICLE, TRUCK, OR OTHER PERSONAL PROPERTY ON PUBLIC-RIGHT-OF-WAY OR OTHER PUBLIC PROPERTY WITHOUT PERMISSION OF THE CITY ENGINEER.

## TEMPORARY WORK EASEMENT NOTE:

CLIENT TO OBTAIN TEMPORARY WORK EASEMENT AGREEMENT; COORDINATE WITH ADJACENT PROPERTY OWNER, PRIOR TO CONSTRUCTION OF ANY OFF-SITE WORK.

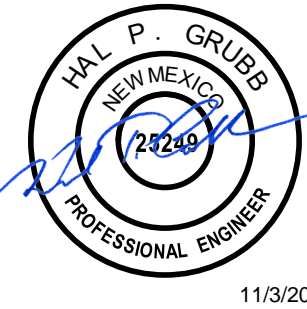
## ACCESSIBLE SITE REQUIREMENTS:

WALKING SURFACES SHALL BE CONTINUOUSLY ACCESSIBLE. ALL WALKWAYS MUST BE A MINIMUM 36" IN WIDTH, HAVE A MAXIMUM 1.5% CROSS SLOPE, AND SHALL HAVE RAMPS COMPLYING WITH ACCESSIBILITY STANDARDS (SECTION 402) WHERE NECESSARY TO CHANGE ELEVATION AT A LONGITUDINAL SLOPE EXCEEDING 5% (1:20). RAMPS WHERE PROVIDED SHALL COMPLY WITH ACCESSIBILITY REQUIREMENTS (SECTION 405) AND BE PROVIDED WITH A MINIMUM 24" WIDE DETECTABLE WARNING STRIP MEETING ACCESSIBILITY REQUIREMENTS (SECTION 406) SHALL BE PLACED WHERE A WALK CROSSES OR ADJOINS A VEHICULAR WAY AND IS NOT SEPARATED BY A CURB, RAILING, OR OTHER ELEMENT MEETING ACCESSIBILITY STANDARDS.

Revision				
No.	Date	By	Chd.	Appr.

Title:

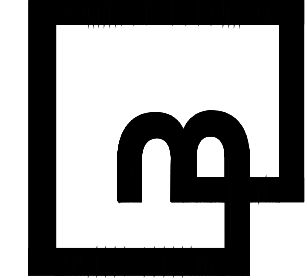
For:



Scale: Horizontal 1" = 20' Vertical N/A

Designed	NRN	Drawn	NRN	Checked	MTL	Approved	HFG	Date	11/03/23
----------	-----	-------	-----	---------	-----	----------	-----	------	----------

**Barghausen Consulting Engineers, Inc.**  
18215 72nd Avenue South  
Kent, WA 98032  
425.251.6222  
[barghausen.com](http://barghausen.com)



Job Number  
**23007**  
Sheet  
**C2.0**

**SITE PLAN**  
**1125 SNOW VISTA BOULEVARD SW**  
**ALBUQUERQUE, NM**

**TAKE 5 OIL CHANGE**  
**DURBAN DEVELOPMENT**