

CITY OF ALBUQUERQUE

Planning Department
Alan Varela, Director



Mayor Timothy M. Keller

January 6, 2026

Dave Aube
Studio Southwest Architects
2101 Mountain Rd SW, Suite B
Albuquerque, NM 87106

RE: Sombra Del Oeste
99999 Valley Cottonwood Dr SW
Engineer's Certification Date: 11/14/2025
Engineer's Stamp Date: 12/20/2024
Hydrology File: M09D032
Case # HYDR-2025-00458
CPN: 741084

PO Box 1293

Dear Mr. Aube:

Albuquerque

Based on the Certification received 12/26/2025 and site visit on 1/6/2026, this certification is approved in support of ROFG/SIA by Hydrology.

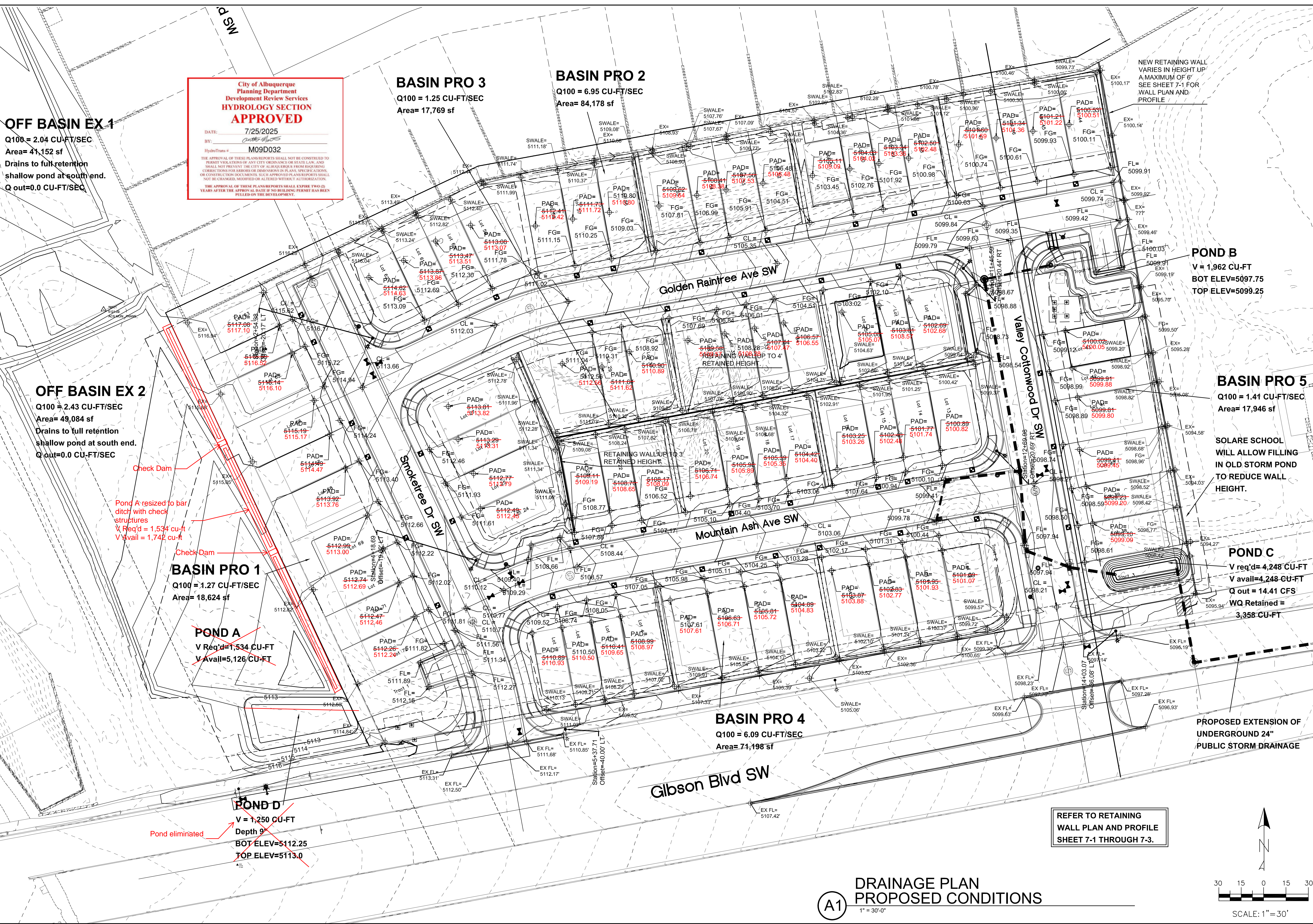
If you have any questions, please contact me at 505-924-3314 or amontoya@cabq.gov.

NM 87103

Sincerely,

www.cabq.gov

Anthony Montoya, Jr., P.E., C.F.M.
Senior Engineer, Hydrology
Planning Department, Development Review Services



**City of Albuquerque
Planning Department
Development Review Services
HYDROLOGY SECTION
APPROVED**

DATE: 7/25/2025
BY: [Signature]
HydroTrans # M09D032

THE APPROVAL OF THESE PLANS/REPORTS SHALL NOT BE CONSIDERED TO PERMIT VIOLATIONS OF ANY CITY ORDINANCE OR STATE LAW, AND SHALL NOT PREVENT THE CITY OF ALBUQUERQUE FROM INITIATING CORRECTIVE ACTIONS FOR ERRORS OR OMISSIONS IN PLANS, SPECIFICATIONS, OR CONSTRUCTION DOCUMENTS. SUCH APPROVED PLANS/REPORTS SHALL NOT BE CHANGED, MODIFIED OR ALTERED WITHOUT AUTHORIZATION. THE APPROVAL OF THESE PLANS/REPORTS SHALL EXPIRE TWO (2) YEARS AFTER THE APPROVAL DATE IF NO BUILDING PERMIT HAS BEEN FILED ON THE DEVELOPMENT.

OFF BASIN EX 1
Q100 = 2.04 CU-FT/SEC
Area= 41,152 sf
Drains to full retention shallow pond at south end.
Q out=0.0 CU-FT/SEC

BASIN PRO 3
Q100 = 1.25 CU-FT/SEC
Area= 17,769 sf

BASIN PRO 2
Q100 = 6.95 CU-FT/SEC
Area= 84,178 sf

OFF BASIN EX 2
Q100 = 2.43 CU-FT/SEC
Area= 49,084 sf
Drains to full retention shallow pond at south end.
Q out=0.0 CU-FT/SEC

BASIN PRO 1
Q100 = 1.27 CU-FT/SEC
Area= 18,624 sf

POND A
V Req'd=1,534 CU-FT
V Avail=5,126 CU-FT

POND D
V = 1,250 CU-FT
Depth 9'
BOT ELEV=5112.25
TOP ELEV=5113.0
Pond eliminated

POND B
V = 1,962 CU-FT
BOT ELEV=5097.75
TOP ELEV=5099.25

BASIN PRO 5
Q100 = 1.41 CU-FT/SEC
Area= 17,946 sf

SOLARE SCHOOL
WILL ALLOW FILLING IN OLD STORM POND TO REDUCE WALL HEIGHT.

POND C
V req'd= 4,248 CU-FT
V avail=4,248 CU-FT
Q out = 14.41 CFS
WQ Retained = 3,358 CU-FT

BASIN PRO 4
Q100 = 6.09 CU-FT/SEC
Area= 71,198 sf

PROPOSED EXTENSION OF UNDERGROUND 24" PUBLIC STORM DRAINAGE

REFER TO RETAINING WALL PLAN AND PROFILE SHEET 7-1 THROUGH 7-3.



NO.	REVISION	BY	DATE

PROJECT: [Blank]
DRAWN BY: DEM
CHECKED BY: [Blank]
APPROVED BY: [Blank]
FILE: [Blank]



SOMBRA DEL OESTE

GRADING & DRAINAGE PLAN

CITY/COUNTY REVIEW		DATE
DEPARTMENT	SIGN-OFF	
WASTEWATER MGMT. DIV.		
WATER SERVICES		
SUBDIVISION ENG.		
STREETS		
TRAFFIC		

SHEET No. [Blank]

**(A1) DRAINAGE PLAN
PROPOSED CONDITIONS**
1" = 30'-0"

