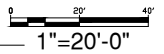


**LANDSCAPE CALCULATIONS**  
ZONING NR-LM: NON-RESIDENTIAL - LIGHT MANUFACTURING ZONE  
APPLICABLE REGULATION(S) IDO 14-16-5-6; Part 6-6-2 OF ROA 1994 - STREET TREES  
TOTAL LOT AREA (ACRES) 3.55 ACRES  
TOTAL LOT AREA (SF) 154,638 SF  
BUILDING AREA (SF) 3,072 SF  
NET LOT AREA (SF) 151,566 SF  
REQUIRED LANDSCAPE AREA: 15% / 22,735 SF  
LANDSCAPE PROVIDED: 22% / 34,065 SF  
REQUIRED VEGETATIVE COVER: 75% / 17,051 SF  
PROVIDED VEGETATIVE COVER: 79% / 19,114 SF  
REQUIRED GROUND COVER: 25% OF VEGETATIVE COVER - 4,263 SF  
PROVIDED GROUND COVER: 28% / 4,462 SF  
PARKING LOT REQUIREMENTS  
PARKING LOT SF / # OF PARKING SPACES: 55 SPACES  
REQUIRED PARKING TREES - 1 Tree for Every 10 Spaces - 6 Trees  
PROVIDED PARKING TREES - 17  
IRRIGATION NOTES:  
IRRIGATION SYSTEM: INSTALLATION OF NEW IRRIGATION BACKFLOW PREVENTION, CONTROLLER AND DRIP IRRIGATION SYSTEM AS A PART OF THIS PROJECT  
MAINTENANCE: RESPONSIBILITY FOR THE MAINTENANCE SHALL BE BY THE OWNER.

PLANT LEGEND		Qty.	Install Size	Mature Size (Ht. x Spc.)	Cover (Each)	Cover (Total)
SYMBOL	LATIN NAME / COMMON NAME					
TREES						
14,652 SF						
	CELTIS OCCIDENTALIS / HACKBERRY	5	2" CAL.	45' X 35'	962 SF	4,810 SF
	PISTACIA CHINENSIS / CHINESE PISTACHE	7	2" CAL.	30'-40' X 20'-30'	706 SF	4942 SF
	ULMUS PROPINQUA 'JFS BIEBERICH' / EMERALD SUNSHINE ELM	5	2" CAL.	35' X 25'	490 SF	2,450 SF
	CHILOPSIS LINEARIS 'BUBBA' / DESERT WILLOW	5	6" MS	20' X 25'	490 SF	2,450 SF
SHRUBS						
4,462 SF						
	FORESTIERA NEOMEXICANA / NEW MEXICO OLIVE	10	15 GAL.	10'-15' x 10'-15'	176 sf	1760 sf
	ERICAMERIA LARICIFOLIA / TURPENTINE BUSH	6	1 GAL.	3'-4' X 3'-4'	12 sf	72 sf
	RHUS AROMATICA 'GRO-LOW' / GRO-LOW SUMAC	6	1 GAL.	2'-3' X 5'-7"	38 sf	228 sf
	MISCANTHUS SINENSIS 'ADAGIO' / DWARF MAIDEN GRASS	17	1 GAL.	3'-5' X 3'-5'	19 sf	323 sf
	CALAMAGROSTIS ACUTIFLORA 'KARL FOERSTER' / KARL FOERSTER FEATHER REED GRASS	28	1 GAL.	3'-5' X 1'-3'	7 sf	196 sf
	SALVIA GREGGI 'FURMAN'S RED' / FURMAN'S RED AUTUMN SAGE	19	1 GAL.	1'-3' X 1'-3'	7 sf	133 sf
	LONICERA SEMPERVIRENS / CORAL HONEYSUCKLE	35	1 GAL.	6'-8' X 8'	50 sf	1750 sf

MATERIALS LEGEND	
SYMBOL	DESCRIPTION
	SYNTHETIC TURF
	7" GRAVEL TO 2"-4" COBBLE DEPENDING ON SLOPE
	NATIVE GRASS SEED MIX BROADCAST / DRILL SEED WITH HYDROMULCH

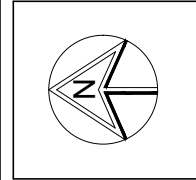


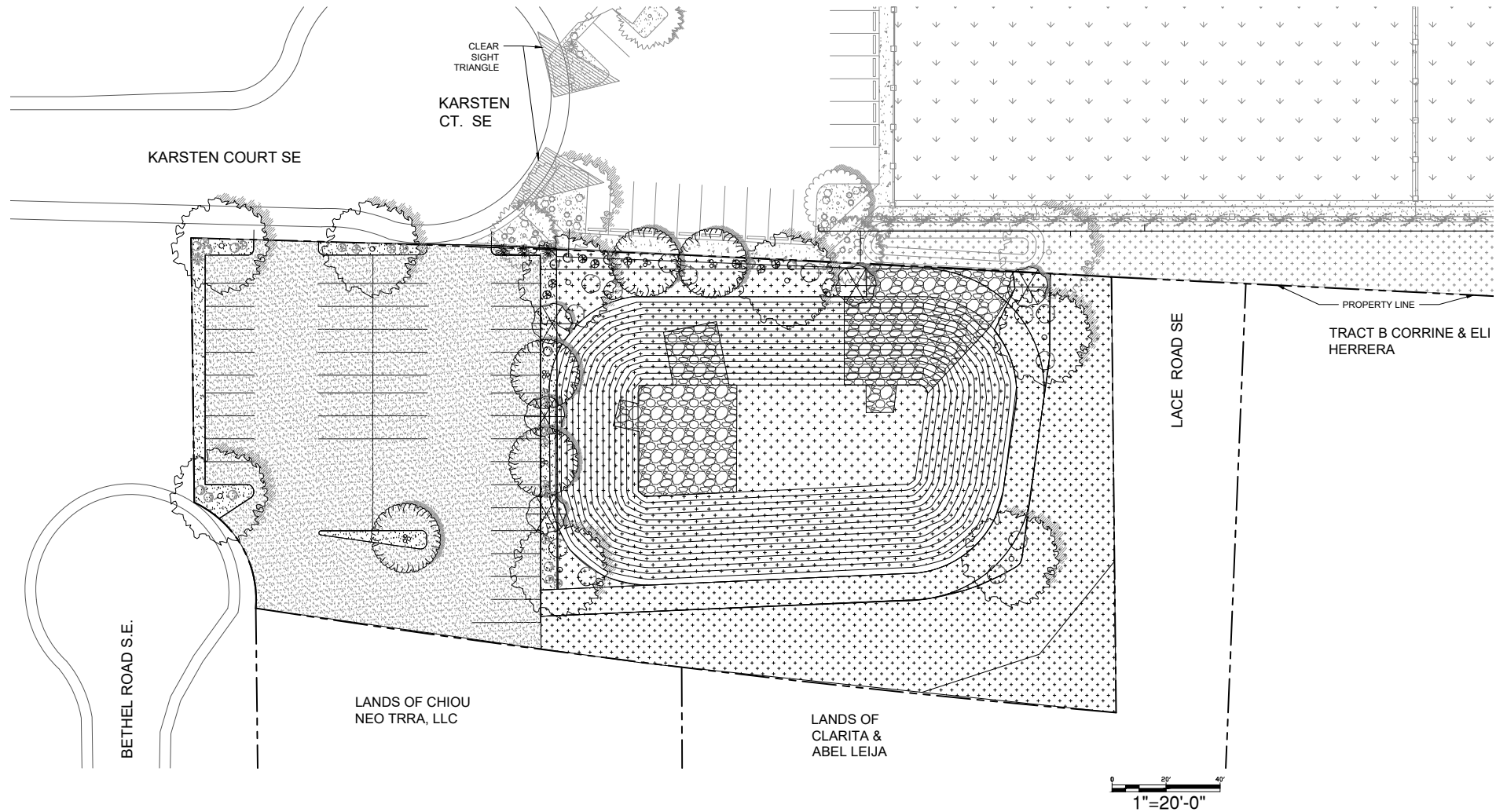
**KRAEMER FIELDS**  
2811 KARSTEN CT SE, ALBUQUERQUE, NM 87102  
**LANDSCAPE PLAN**

REVISIONS	

DRAWN BY: EB
DESIGNED BY:
CHECKED BY: TG
DATE: 03/08/2021

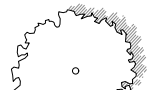
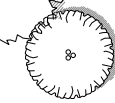
**WESTWIND LANDSCAPE CONSTRUCTION INC.**  
2739 VASSAR PLACE, NE  
ALBUQUERQUE, NM 87107  
PHONE: 505-881-8925  
FAX: 505-883-7052










PLANT LEGEND		Qty.	Install Size	Mature Size (ft. x Spr.)	Cover (Each)	Cover (Total)
SYMBOL	LATIN NAME / COMMON NAME					

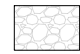
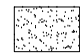

TREES						10,146 SF
-------	--	--	--	--	--	-----------

	CELTIS OCCIDENTALIS / HACKBERRY	8	2" CAL.	45' X 35'	962 SF	7,696 SF
	CHILOPSIS LINEARIS 'BUBBA' / DESERT WILLOW	5	6" MS	20' X 25'	490 SF	2450 SF

SHRUBS						1,440 SF
--------	--	--	--	--	--	----------

	FORESTIERA NEOMEXICANA / NEW MEXICO OLIVE	5	15 GAL.	10'-15' x 10'-15'	176 sf	880 sf
	RHUS AROMATICA 'GRO-LOW' / GRO-LOW SUMAC	14	1 GAL.	2'-3' X 5'-7'	38 sf	532 sf
	MISCANTHUS SINENSIS 'ADAGIO' / DWARF MAIDEN GRASS	4	1 GAL.	3'-5' X 3'-5'	19 sf	456 sf
	ERICAMERIA LARICIFOLIA / TURPENTINE BUSH	24	1 GAL.	3'-4' X 3'-4'	12 sf	456 sf
	HESPERALOE PARVIFLORA / RED YUCCA	24	1 GAL.	3' X 3'	7 sf	456 sf

MATERIALS LEGEND	
SYMBOL	DESCRIPTION

	2"-4" COBBLE / RIPRAP
	7" GRAVEL
	NATIVE GRASS SEED MIX BROADCAST / DRILL SEED WITH HYDROMULCH

**LANDSCAPE CALCULATIONS**

ZONING NR-LM: NON-RESIDENTIAL - LIGHT MANUFACTURING ZONE

APPLICABLE REGULATION(S) IDO 14-16-5-6; Part 6-6-2 OF ROA 1994 - STREET TREES

TOTAL LOT AREA (ACRES) 1.1645 ACRES  
TOTAL LOT AREA (SF) 50,725 SF  
BUILDING AREA (SF) 0 SF  
NET LOT AREA (SF) 50,725 SF

REQUIRED LANDSCAPE AREA: 15% / 7,608 SF  
LANDSCAPE PROVIDED: 67% / 34,083 SF

REQUIRED VEGETATIVE COVER: 75% / 5,706 SF  
PROVIDED VEGETATIVE COVER: 152% / 11,586 SF  
REQUIRED GROUND COVER: 25% OF VEGETATIVE COVER - 1,426 SF  
PROVIDED GROUND COVER: 25% / 1,440 SF

PARKING LOT REQUIREMENTS

PARKING LOT SF / # OF PARKING SPACES: 42 SPACES  
REQUIRED PARKING TREES - 1 Tree for Every 10 Spaces - 4 Trees  
PROVIDED PARKING TREES - 8

**IRRIGATION NOTES:**

IRRIGATION SYSTEM: INSTALLATION OF NEW IRRIGATION BACKFLOW PREVENTION, CONTROLLER AND DRIP IRRIGATION SYSTEM AS A PART OF THIS PROJECT

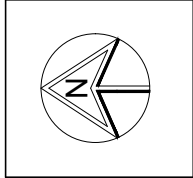
MAINTENANCE: RESPONSIBILITY FOR THE MAINTENANCE SHALL BE BY THE OWNER.

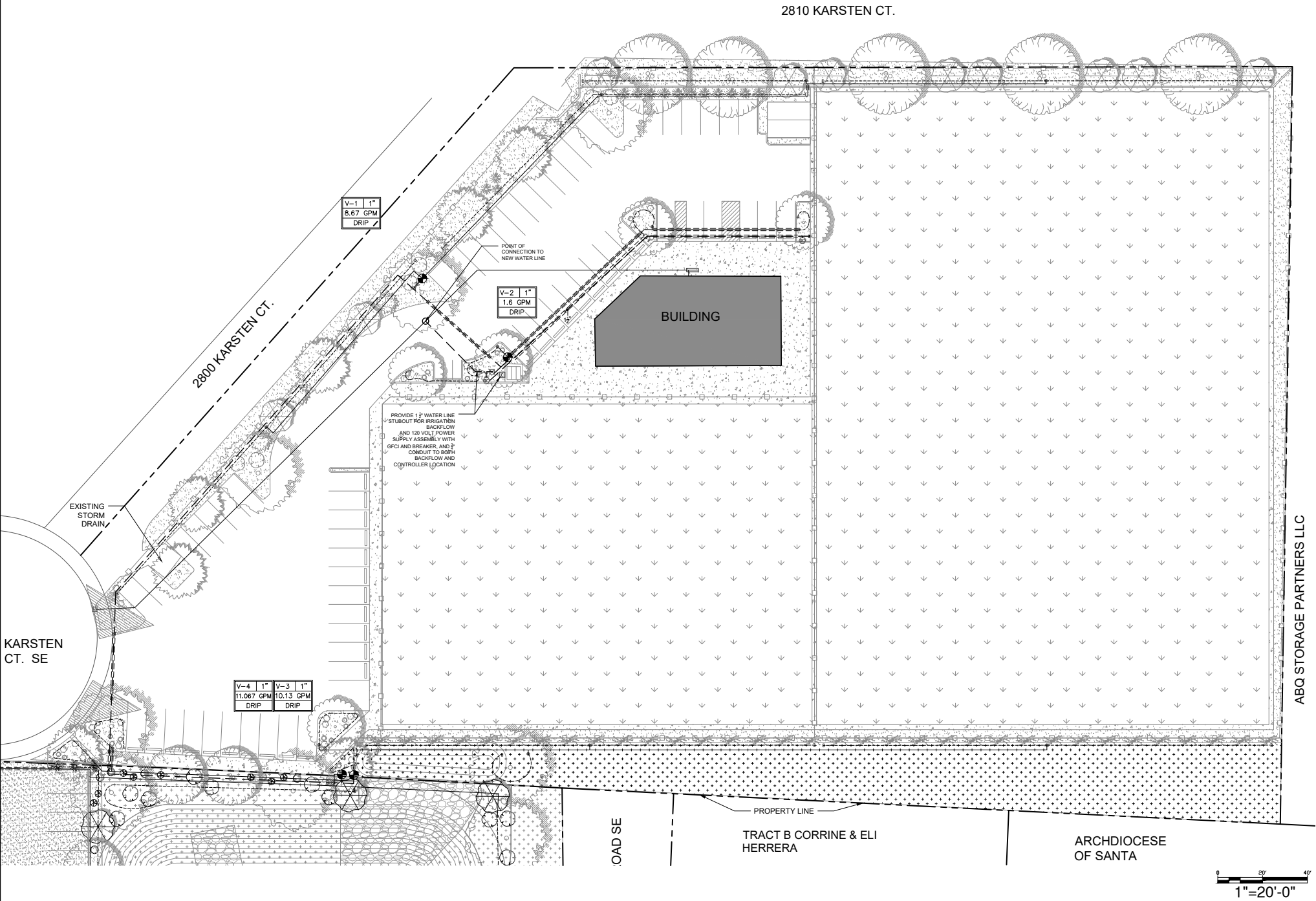
REVISIONS	

DRAWN BY: EB
DESIGNED BY:
CHECKED BY: TG
DATE: 02/26/2021

WESTWIND LANDSCAPE  
CONSTRUCTION INC.

2739 VASSAR PLACE, NE  
ALBUQUERQUE, NM 87107  
PHONE: 505-881-8925  
FAX: 505-883-7052





- IRRIGATION LEGEND
- SYMBOL DESCRIPTION
- [M] WATER METER - BY OTHERS
  - [C] IRRIGATION CONTROLLER
  - [A] 1 1/2" RP BACKFLOW PREVENTER
  - [X] MASTER VALVE
  - [X] ISOLATION VALVE
  - CLASS 200 PVC MAINLINE AND LATERAL SLEEVING
  - 1 1/2" SCHEDULE 40 PVC MAINLINE
  - SCHEDULE 40 PVC LATERAL LINE
  - [CC] QUICK COUPLER ASSEMBLY
  - [RV] REMOTE CONTROL VALVE ASSEMBLY
  - [C] PVC TO POLY CONNECTION IN 6" ROUND BOX
  - [P] 3/4" POLY LINE
  - [FC] FLUSH CAP IN 6" ROUND BOX FOR POLY/ END CAP FOR PVC
- NOT SHOWN:
- 3/4" POLY
  - 2 4GPH DBK EMITTERS PER SHRUB; 3 4 GPH DBK EMITTERS PER NEW MEXICO OLIVE; 4 4 GPH DBK EMITTERS PER TREE

KRAEMER FIELDS

2811 KARSTEN CT SE, ALBUQUERQUE, NM 87102

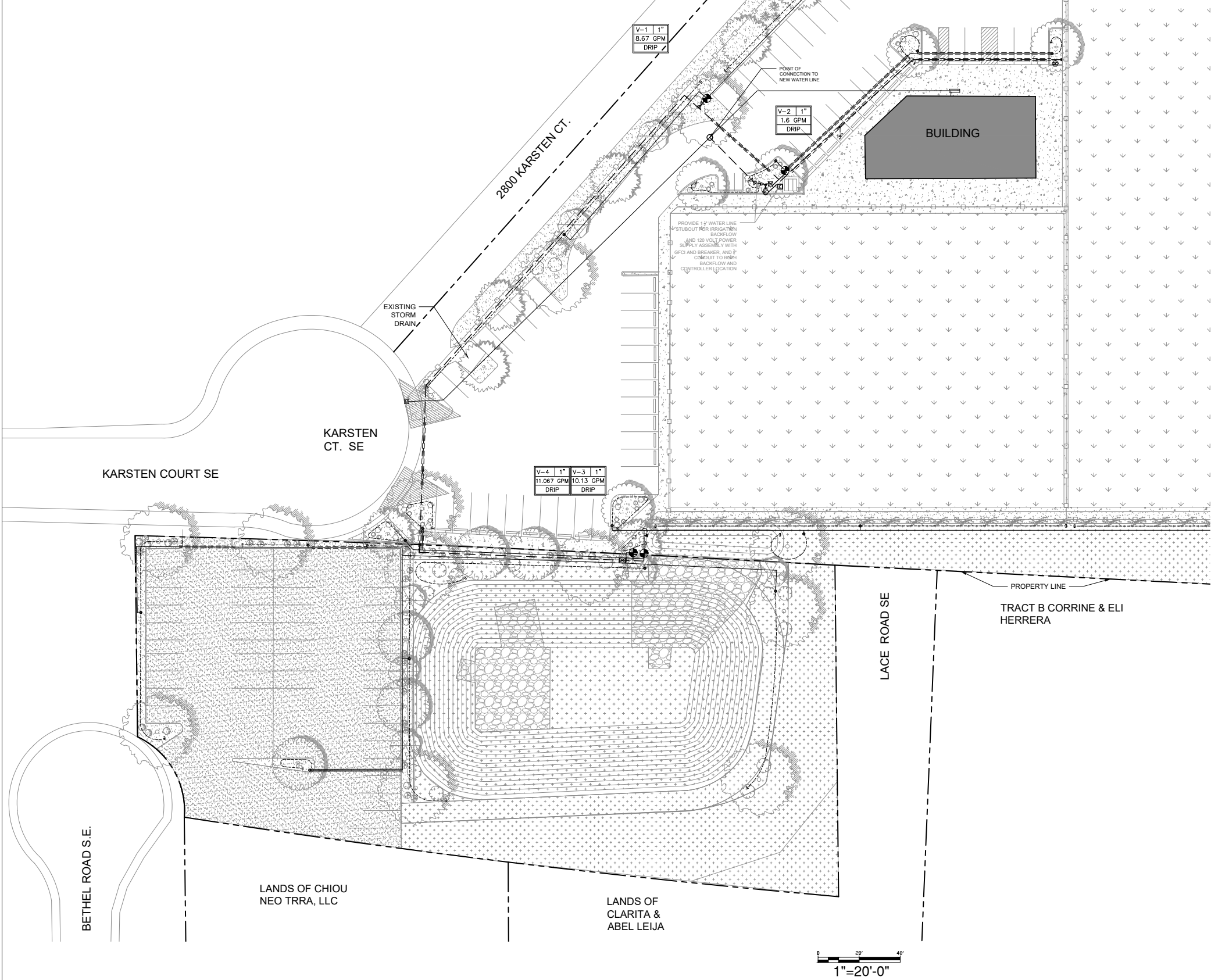
IRRIGATION PLAN

REVISIONS

DRAWN BY: EB
DESIGNED BY:
CHECKED BY: TG
DATE: 03/11/2021

WESTWIND LANDSCAPE  
CONSTRUCTION INC.  
2739 VASSAR PLACE, NE  
ALBUQUERQUE, NM 87107  
PHONE: 505-881-8925  
FAX: 505-883-7052





- IRRIGATION LEGEND
- SYMBOL DESCRIPTION
- [M] WATER METER — BY OTHERS
  - [C] IRRIGATION CONTROLLER
  - [A] 1 1/2" RP BACKFLOW PREVENTER
  - [X] MASTER VALVE
  - [X] ISOLATION VALVE
  - [---] CLASS 200 PVC MAINLINE AND LATERAL SLEEVING
  - [—] 1 1/2" SCHEDULE 40 PVC MAINLINE
  - [—] SCHEDULE 40 PVC LATERAL LINE
  - [CC] QUICK COUPLER ASSEMBLY
  - [RV] REMOTE CONTROL VALVE ASSEMBLY
  - [O] PVC TO POLY CONNECTION IN 6" ROUND BOX
  - [P] POLY LINE
  - [J] FLUSH CAP IN 6" ROUND BOX FOR POLY/ END CAP FOR PVC
- NOT SHOWN:
- [P] POLY
  - 2 4GPH DBK EMITTERS PER SHRUB; 3 4 GPH DBK EMITTERS PER NEW MEXICO OLIVE; 4 4 GPH DBK EMITTERS PER TREE

KRAEMER FIELDS

2801 KARSTEN CT SE, ALBUQUERQUE, NM 87102

IRRIGATION PLAN

REVISIONS

DRAWN BY: EB
DESIGNED BY:
CHECKED BY: TG
DATE: 03/11/2021

**WESTWIND LANDSCAPE**  
**CONSTRUCTION INC.**  
2739 VASSAR PLACE, NE  
ALBUQUERQUE, NM 87107  
PHONE: 505-881-8925  
FAX: 505-883-7052

