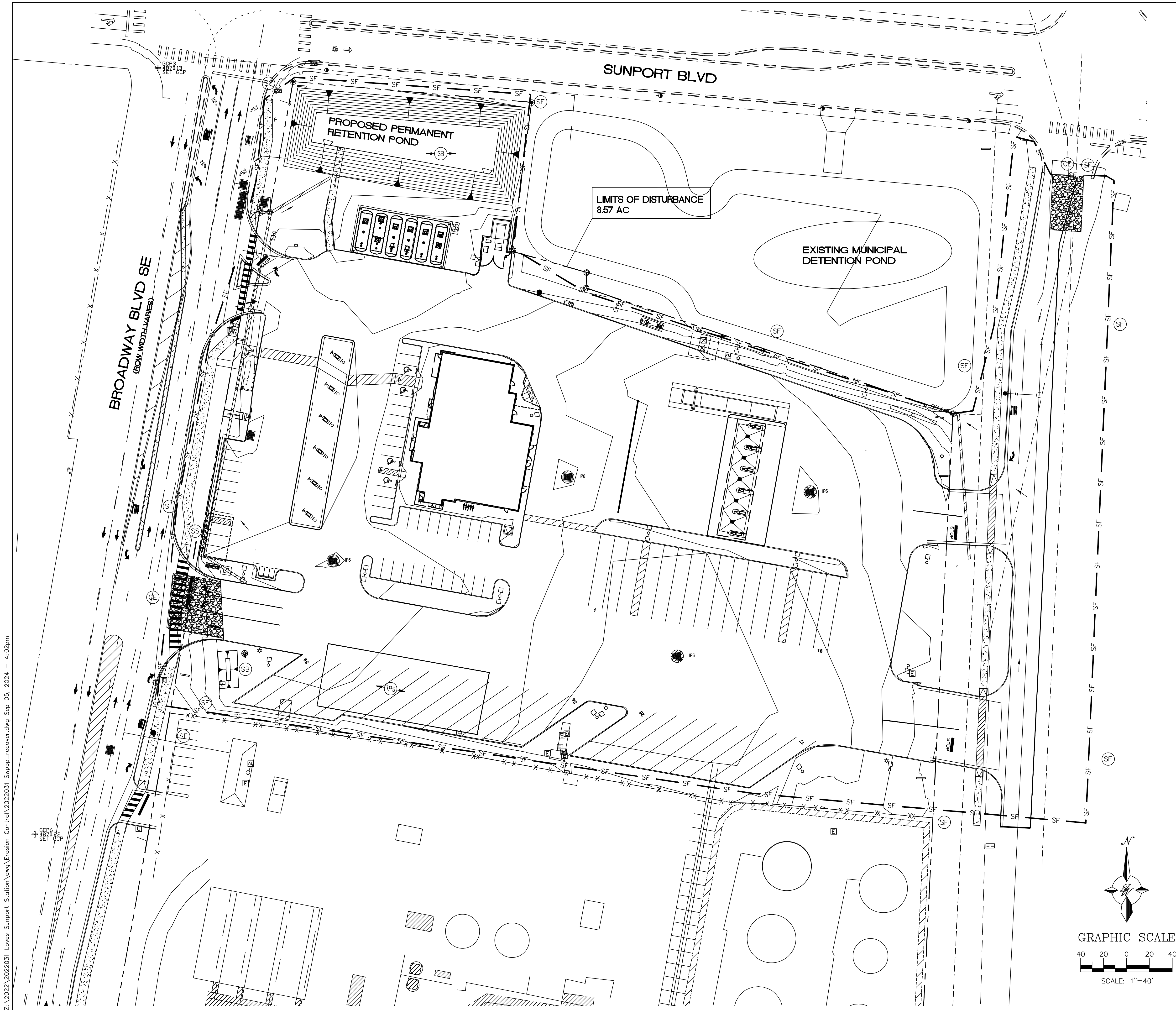


Z:\2022\2022031 Loves Sunport Station\dwg\Erosion Control\2022031 Swppp_recover.dwg Sep 05, 2024 -- 4:02pm



- EROSION NOTES

TPS

TPS

TPS

TEMPORARY PARKING AND STORAGE

LIMITS OF DISTURBANCE

SB

SB

SB

TEMPORARY SEDIMENT BASIN
- EROSION DETAILS

CE

TEMPORARY STONE CONSTRUCTION EXIT

SF

SF

TEMPORARY SILT FENCE

SS

SS

SWPPP INFORMATION SIGN

SP

SP

SILT FENCE

CE

CE

CONSTRUCTION EXIT

IP

IP

INLET PROTECTION

TEMPORARY EROSION CONTROL
EARTHEN BERM

- SEQUENCE OF CONSTRUCTION:**
1. INSTALL STABILIZED CONSTRUCTION ENTRANCES
 2. POST PUBLIC NOTICE PER DETAILS
 3. INSTALL DOWN GRADIENT PERIMETER CONTROLS INCLUDING EARTHEN BERMS.
 4. THE ENTIRE SITE WILL BE GRADED TO DRAIN TO THE PROPOSED RETENTION POND AT ALL TIMES DURING CONSTRUCTION. INSTALL SEDIMENT BASINS PRIOR TO CLEARING REST OF THE SITE.
 5. NOTIFY SWPPP COMPLIANCE INSPECTOR OF COMPLETION OF ABOVE.
 6. BEGIN SOIL DISTURBING ACTIVITIES
 7. PROVIDE TEMPORARY STABILIZATION OF DISTURBED AREAS OR STOCKPILES
 8. INSTALL UNDERGROUND UTILITIES
 9. START CONSTRUCTION OF COMMERCIAL BUILDING
 10. FINISH GRADING THE SITE
 11. PAVE COMMON ACCESS DRIVE AISLES AND SIDEWALKS
 12. INSTALL LANDSCAPING ON SITE.

GROUND COVER (PRE-CONSTRUCTION):

THE PRECONSTRUCTION GROUND COVER CONSIST OF PAVED AREAS, MISC. CONCRETE PADS, COMPACTED SOIL AREAS AND GRADED PADS AT PREVIOUSLY REMOVED BUILDINGS AND AST'S.

STORMWATER TEAM MEMBERS:

BMP INSTALLATION, MAINTENANCE AND CORRECTIVE ACTIONS

PHONE: _____
EMAIL: _____

INSPECTIONS NAME: _____
PHONE: _____
EMAIL: _____

LIST OF OPERATORS:

OPERATOR 1 NAME: _____
PHONE: _____
EMAIL: _____

OPERATOR 2 NAME: _____
PHONE: _____
EMAIL: _____

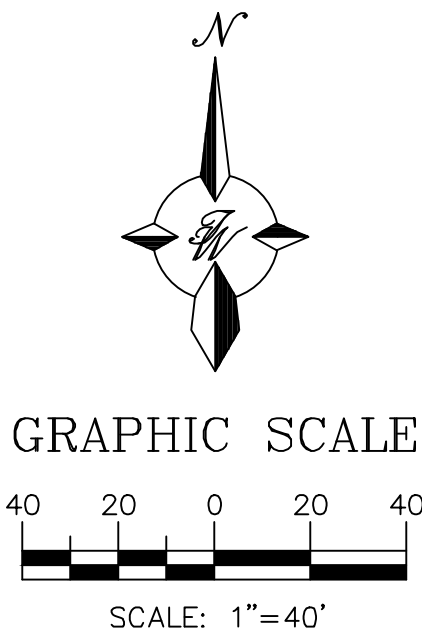
OPERATOR 3 NAME: _____
PHONE: _____
EMAIL: _____

SWPPP PURPOSE:

THE PURPOSE OF THIS SWPPP IS TO APPLY SWPPP CONTROLS THAT ARE REQUIRED DURING DEVELOPMENT OF SITE AND PUBLIC RIGHT OF WAYS.

CAUTION

ALL EXISTING UTILITIES SHOWN WERE OBTAINED FROM RESEARCH, AS-BUILTS, SURVEYS OR INFORMATION PROVIDED BY OTHERS. IT SHALL BE THE SOLE RESPONSIBILITY OF THE CONTRACTOR TO CONDUCT ALL NECESSARY FIELD INVESTIGATIONS PRIOR TO AND INCLUDING ANY EXCAVATION, TO DETERMINE THE ACTUAL LOCATION OF UTILITIES AND OTHER IMPROVEMENTS, PRIOR TO STARTING THE WORK. ANY CHANGES FROM THIS PLAN SHALL BE COORDINATED WITH AND APPROVED BY THE ENGINEER.



<div>ENGINEER'S SEAL</div> <div><div><div>RONALD R. BOHANNAN</div><div>NEW MEXICO</div><div>7868</div><div>PROFESSIONAL ENGINEER</div></div><div><div></div><div>7-1-24</div></div><div>RONALD R. BOHANNAN P.E. #7868</div></div>	BROADWAY/SUNPORT BLVD		DRAWN BY PM
	EROSION CONTROL PLAN		DATE 7-1-24
	<div><div></div><div><div>TERRA WEST, LLC</div><div>5571 MIDWAY PARK PLACE NE ALBUQUERQUE, NM 87109 (505) 858-3100 www.tierrowestllc.com</div></div></div>		2022031 SWPPP_RECOVER
			SHEET # SW-1 JOB # 2022031

NATURE AND EXTENT OF CONSTRUCTION ACTIVITIES:

NATURE OF CONSTRUCTION ACTIVITIES: MASS ROUGH GRADING OF THE SITE, INSTALLATION OF UTILITIES (WATER AND SANITARY SEWER) AND PAVING OF INTERNAL DRIVE AISLES, PARKING AND SIDEWALKS, BUILDING CONSTRUCTION AND LANDSCAPING AND OFFSITE IMPROVEMENTS.

PROPERTY SIZE: 9.69 ACRES

DISTURBED AREA SIZE: 8.59 ACRES

MAXIMUM DISTURBED AREA SIZE: 8.57 ACRES

PROJECT SCHEDULE: SCHEDULE LENGTHS ARE TBD, SEE SEQUENCE OF CONSTRUCTION THIS SHEET SW-1 FOR SCHEDULE TASKS DESCRIPTION.

CONSTRUCTION PHASE: THE FIRST PHASE OF CONSTRUCTION CONSISTS OF REMOVAL OF EXISTING ONSITE IMPROVEMENT. (ONSITE EXISTING BUILDINGS AND ABOVE GROUND STORAGE TANKS WERE PREVIOUSLY REMOVED). THE SECOND PHASE OF CONSTRUCTION CONSISTS OF BUILDING CONSTRUCTION, TRENCHING AND INSTALLING UTILITIES FOR SERVICE AND PAVING OF PARKING AND DRIVEWAYS TO THE PROPERTY.

N.O.T. TERMINATION: PARCELS ARE EXPECTED TO BE PERMANENTLY STABILIZED PRIOR TO OCCUPANCY.

STABILIZATION MEASURES: LOCALLY, NON-VEGETATIVE CONTROLS MAY CONSIST OF 2" OR 3" GRAVEL MULCH MIXED WITH COA WESTSIDE SEED MIX PLACED TO COVER THE PARCEL OR VEGETATIVE CONTROLS MAY BE CRIMP STRAW OR HYDRO-SEED APPLIED WITH THE INTENT OF PROVIDING 70% OR MORE COVERAGE THAT IS PROVIDED BY VEGETATION NATIVE TO LOCAL UNDISTURBED AREAS WITHIN (3) THREE YEARS, TO THE EXTENT NECESSARY TO PREVENT EROSION ON THE SEEDED AREA, NON-VEGETATIVE EROSION CONTROLS HAVE BEEN APPLIED THAT PROVIDE COVER AT LEAST FOR THREE YEARS WITHOUT ACTIVE MAINTENANCE. VEGETATIVE CONTROLS SHOULD BE APPLIED FROM JUNE TO AUGUST TO TAKE ADVANTAGE OF THE AREA'S RAIN SEASON.

CITY WEED REMOVAL ORDINANCE: PROPERTY OWNERS ARE TO COMPLY WITH THE CITY WEED REMOVAL ORDINANCE.

INSPECTIONS: SEE ESC PLAN STANDARD NOTE #3, THIS SHEET

BMP MAINTENANCE:

ALL MEASURES STATED IN THIS EROSION AND SEDIMENT CONTROL PLAN, AND IN THE STORM WATER POLLUTION PREVENTION PLAN, SHALL BE MAINTAINED IN FULLY FUNCTIONAL CONDITION UNTIL NO LONGER REQUIRED FOR A COMPLETED PHASE OF WORK OR UNTIL FINAL STABILIZATION OF THE SITE IS ACHIEVED. ALL EROSION AND SEDIMENTATION CONTROL MEASURES SHALL BE INSPECTED AT THE END OF THE WORKDAY BY A QUALIFIED MEMBER OF THE SWPPP COMPLIANCE TEAM.

THE OPERATOR WITH CONTROL OF THE SITES DAILY ACTIVITIES IS RESPONSIBLE TO MAINTAIN, CLEAN AND REPAIR EROSION CONTROLS IN ACCORDANCE WITH THE FOLLOWING:

1. INLET PROTECTION DEVICES AND BARRIERS SHALL BE REPAIRED OR REPLACED, IF THEY SHOW SIGNS OF UNDERMINING OR DETERIORATION. SEDIMENT SHALL BE REMOVED TO INSURE PROPER FLOWS. INLET PROTECTION TYPES MAY NEED TO BE MODIFIED DURING THE CONSTRUCTION PROGRESS.
2. ALL SEEDED AREAS SHALL BE CHECKED REGULARLY TO SEE THAT A GOOD STAND OF VEGETATION IS MAINTAINED. AREAS SHOULD BE FERTILIZED, WATERED, AND RE-SEEDED AS NEEDED.
3. SILT FENCES, WADDLES OR OTHER CONTROLS SHALL BE REPLACED OR REPAIRED TO PROPER FUNCTIONING CONDITION, IF DAMAGED. SEDIMENT AND SOIL SHALL BE REMOVED WHEN REACHES ONE-HALF THE HEIGHT OF THE CONTROL.
4. THE CONSTRUCTION EXITS SHALL BE MAINTAINED IN A CONDITION WHICH WILL PREVENT TRACKING OF SEDIMENT ONTO PUBLIC OR PRIVATE ROADWAYS. THIS MAY REQUIRE PERIODIC TOP DRESSING, EXTENDING OR OTHER MODIFICATIONS TO THE CONSTRUCTION EXITS AS CONDITIONS DEMAND. SITE TRAFFIC SHOULD BE LIMITED TO THE CONTROLLED EXITS ONLY.
5. SEDIMENTATION BASINS SHALL BE MAINTAINED IN OPERATIONAL CONDITIONS AT ALL TIMES. SEDIMENT SHALL BE REMOVED FROM SEDIMENT BASINS OR TRAPS WHEN THE DESIGN CAPACITY HAS BEEN REDUCED BY 50%.
6. REFERENCE THE SWPPP BOOK FOR ALL EROSION CONTROL MAINTENANCE PROCEDURES AND FREQUENCIES. CONSULT THE SWPPP PREPARER WITH ANY QUESTIONS REGARDING THIS SWPPP AND ITS REQUIREMENTS.
7. EARTHEN BERMS SHALL BE MAINTAINED IN OPERATIONAL CONDITION UNTIL NO LONGER REQUIRED TO DIRECT RUNOFF TO PONDING AREAS.

EROSION CONTROL NOTES:

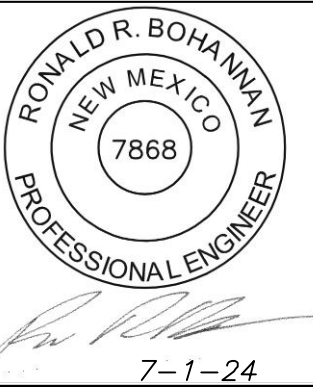
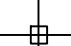
1. CONTRACTOR IS RESPONSIBLE FOR OBTAINING A TOPSOIL DISTURBANCE PERMIT FROM THE LOCAL JURISDICTIONAL AUTHORITY PRIOR TO BEGINNING WORK.
2. THE OPERATOR WITH CONTROL OF THE DAILY SITES ACTIVITIES IS RESPONSIBLE FOR MAINTAINING RUN-OFF AND RUN ON OF SITE DURING CONSTRUCTION.
3. THE OPERATOR WITH CONTROL OF THE DAILY SITES ACTIVITIES IS RESPONSIBLE FOR CLEANING ALL SEDIMENT THAT GETS INTO EXISTING RIGHT-OF-WAY. REPAIR OF DAMAGED FACILITIES AND CLEANUP OF SEDIMENT ACCUMULATIONS ON ADJACENT PROPERTIES AND IN PUBLIC FACILITIES IS THE RESPONSIBILITY OF THE CONTRACTOR.
4. ALL EXPOSED EARTH SURFACES MUST HAVE APPROPRIATE CONTROLS TO PROTECT FROM WIND AND WATER EROSION DURING ALL PHASES OF THE PROJECT.
5. STOCKPILES INACTIVE FOR 14 DAYS ARE REQUIRED TO HAVE TEMPORARY STABILIZATION OR APPROPRIATE COVER TO CONTROL WIND AND WATER EROSION.
6. THE OPERATOR WITH CONTROL OF THE DAILY SITES ACTIVITIES IS REQUIRED TO MAINTAIN ALL SITE BMP'S IN GOOD CONDITION FOR THE DURATION OF THE PROJECT UNTIL A NOTICE OF TERMINATION IS ACCEPTED BY THE EPA.
7. IF SITE EARTH DISTURBANCES EXCEED 5 ACRES AT ANY ONE TIME, TEMPORARY AND/OR PERMANENT STABILIZATION MUST BE COMPLETED WITHIN 7 DAYS WHEN AREA BECOMES INACTIVE OR EARTH DISTURBING ACTIVITIES ARE COMPLETE. SITE EARTH DISTURBANCES OF LESS THAN 5 ACRES, HAVE 14 DAYS TO PROVIDE TEMPORARY OR PERMANENT STABILIZATION WHEN AREA BECOMES INACTIVE OR EARTH DISTURBING ACTIVITIES ARE COMPLETE.

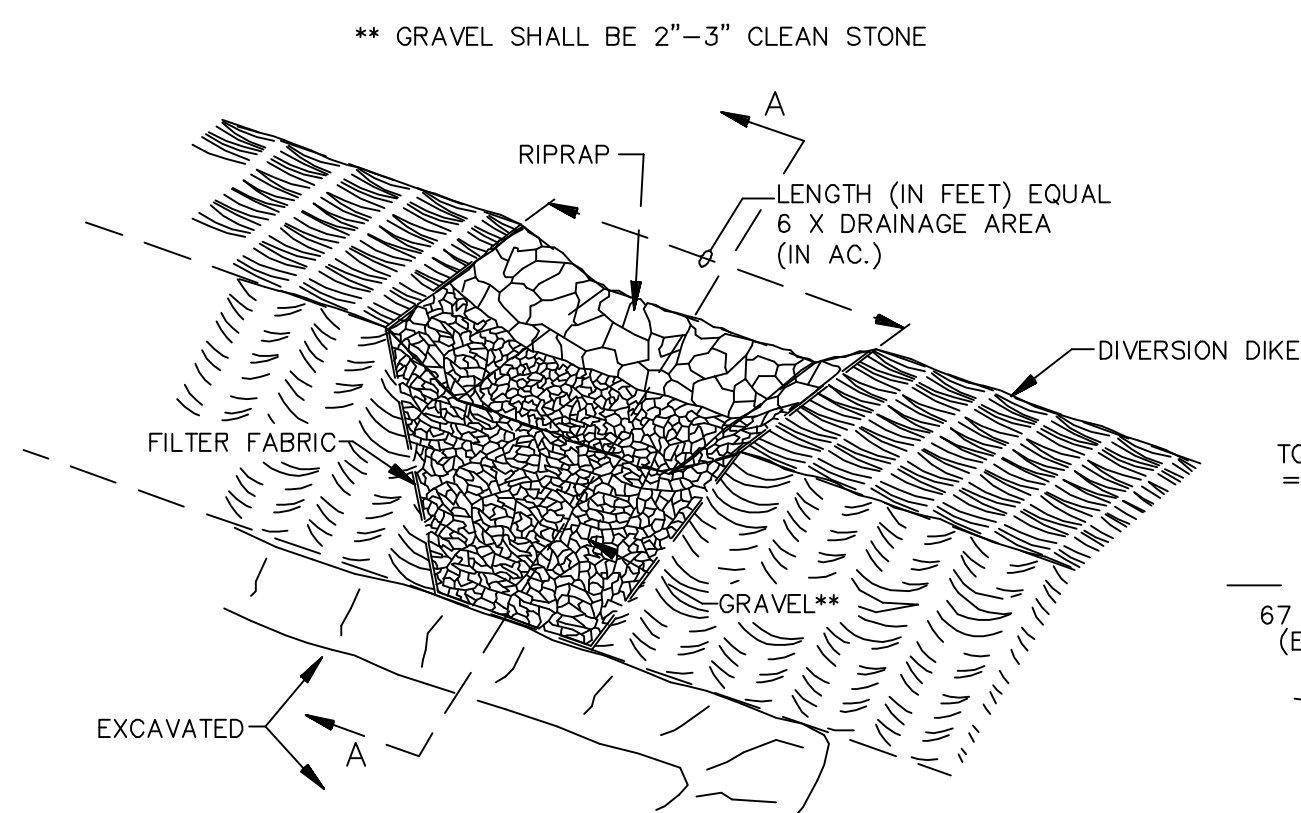
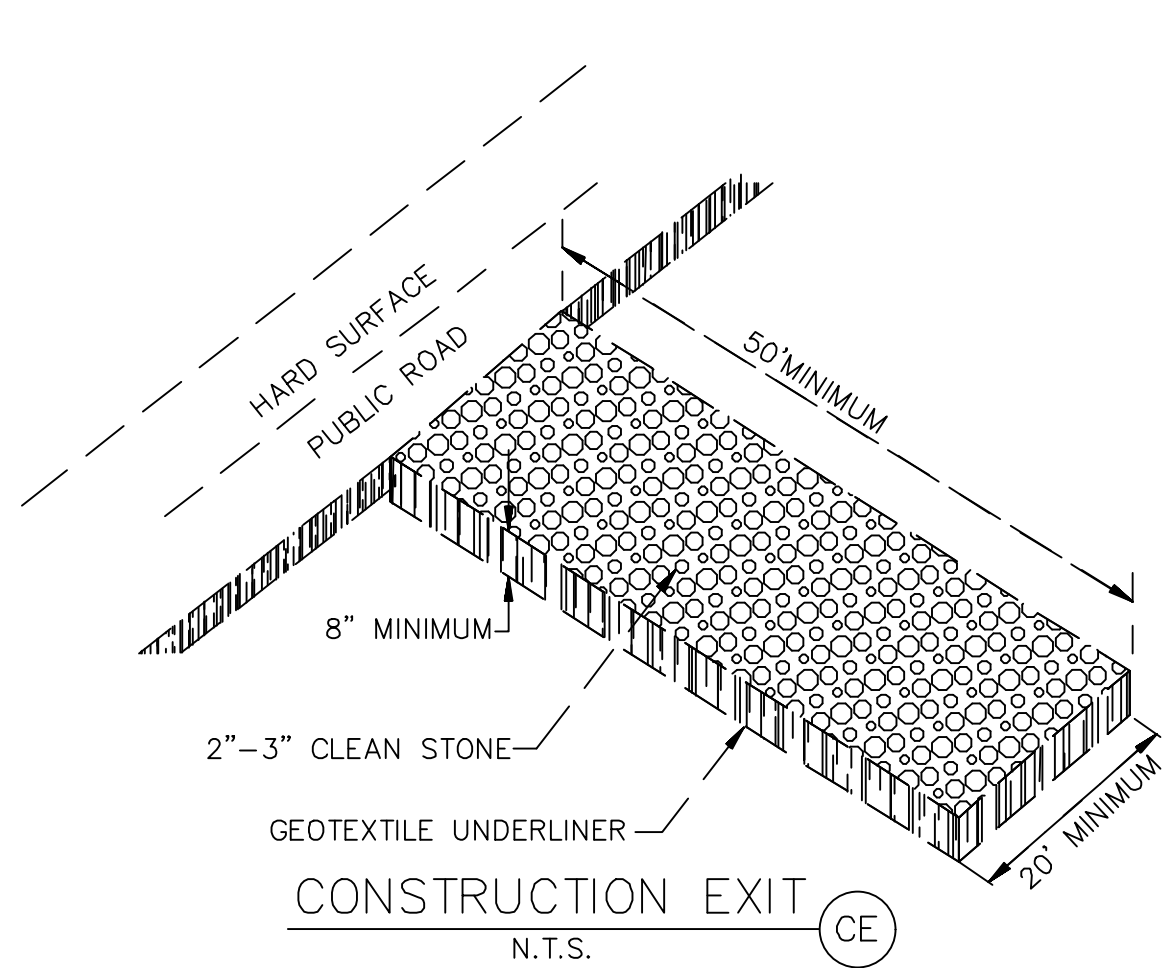
GENERAL EROSION NOTES:

- A. THE STORMWATER POLLUTION PREVENTION PLAN (SWPPP) IS COMPRISED OF THE SWPPP BOOK, THE 2022 GENERAL CONSTRUCTION PERMIT, THIS DRAWING ("TEMPORARY EROSION CONTROL AND SEDIMENTATION PLAN"), STANDARD DETAILS ("TEMPORARY EROSION CONTROL AND SEDIMENTATION DETAILS"), EPA NOTICE OF INTENT PERMIT AND ALL SUBSEQUENT REPORTS, CORRECTIVE ACTIONS AND EROSION CONTROL RELATED DOCUMENTS.
- B. ALL OPERATORS AS DESIGNATED, CONTRACTORS AND SUBCONTRACTORS INVOLVED WITH SITE ACTIVITIES RELATED TO STORM WATER POLLUTION PREVENTION SHALL REVIEW A COPY OF THE STORM WATER POLLUTION PREVENTION PLAN (SWPPP), THE 2017 CONSTRUCTION GENERAL PERMIT, THE NATIONAL POLLUTANT DISCHARGE ELIMINATION SYSTEM (NPDES), THE CLEAN WATER ACT OF 1972 AND BECOME FAMILIAR WITH THEIR CONTENTS.
- C. THE OPERATOR IN CONTROL OF DAILY SITE ACTIVITIES SHALL IMPLEMENT BEST MANAGEMENT PRACTICES AS REQUIRED BY THE SWPPP. ADDITIONAL BEST MANAGEMENT PRACTICES SHALL BE IMPLEMENTED AS DICTATED BY CONDITIONS THAT MAY OCCUR AT NO ADDITIONAL COST TO PROJECT OWNER THROUGHOUT ALL PHASES OF CONSTRUCTION.
- D. BEST MANAGEMENT PRACTICES (BMP'S) AND CONTROLS SHALL CONFORM TO ALL FEDERAL, STATE, OR LOCAL REQUIREMENTS OR MANUAL OF PRACTICE, AS APPLICABLE. OPERATOR WITH CONTROL OF DAILY SITE ACTIVITIES SHALL IMPLEMENT ADDITIONAL CONTROLS AS DIRECTED BY PERMITTING AGENCY, LOCAL JURISDICTIONAL AUTHORITY OR SWPPP COMPLIANCE INSPECTOR.
- E. THE TEMPORARY EROSION CONTROL AND SEDIMENTATION PLAN IS A WORKING DOCUMENT AND IS REQUIRED TO BE UPDATED WITHIN 24 HOURS OF ANY CHANGES WHEN BMP'S ARE REPAIRED, RELOCATED OR REMOVED BY NOTING ON THE PLAN THE AREAS AND DATES OF THE REPAIRS, RELOCATIONS OR REMOVALS. AN ACTIVE COPY OF THE PLAN SHALL BE POSTED IN THE JOB SITE TRAILER ONSITE AND MUST BE MAINTAINED CURRENT AT ALL TIMES.
- F. CONTRACTOR SHALL MINIMIZE CLEARING AND EARTH DISTURBANCE TO THE MAXIMUM ACREAGE AS REQUIRED BY THE EPA CONSTRUCTION GENERAL PERMIT.
- G. CONTRACTOR SHALL DENOTE ON THIS PLAN, THE LOCATION OF TEMPORARY PARKING, STORAGE, PORTABLE SANITARY FACILITIES, OFFICE TRAILERS, AND ALL SUPPORT AREAS. RELOCATIONS OF EACH SHALL ALSO BE DOCUMENTED AS THEY OCCUR.
- H. ALL WASH OUT WATER USED FOR CONCRETE, MASONRY, PAINT AND OTHER MATERIALS SHALL HAVE ADEQUATE SIGNAGE WITH PROPER CONTAINMENT AND DISPOSED OF PROPERLY WHEN CAPACITY REACHES 50% OR PER VENDOR RECOMMENDATIONS. VENDORS AND TRADESMEN SHALL BE INFORMED OF THE REQUIREMENTS TO USE THE WASH OUT.
- I. A SPILL KIT SHALL BE READILY AVAILABLE TO CONTAIN AND CLEAN-UP FUEL OR CHEMICAL SPILLS AND LEAKS. A DISCHARGE OF ANY MATERIAL IN A QUANTITY THAT MAY WITHIN REASONABLE PROBABILITY CAUSE, INJURE OR BE DETRIMENTAL TO HUMAN HEALTH, ANIMAL OR PLANT LIFE, OR PROPERTY; OR INTERFERE WITH THE PUBLIC WELFARE MUST BE REPORTED TO THE NEW MEXICO ENVIRONMENTAL DEPARTMENT HOTLINE AT (505) 827-9329 FOR EMERGENCIES OR FOR NON EMERGENCIES AT (866)-428-6535. IF UNSURE IF THE SPILL IS OF A SIGNIFICANT QUANTITY, THE SPILL SHOULD BE REPORTED TO THE HOTLINE AND INFORMATION PROVIDED WITH DETAILS OF THE SPILL FOR FURTHER ACTIONS.
- J. DUST DURING CONSTRUCTION OPERATIONS SHALL BE FREQUENTLY CONTROLLED BY WATER SUPPRESSION METHODS ONLY. EARTH DISTURBING OPERATIONS SHALL CEASE IF HIGH WINDS ABOVE 35 MPH ARE PRESENT. THE USE OF MOTOR OILS AND OTHER PETROLEUM BASED OR TOXIC LIQUIDS IS STRICTLY PROHIBITED. OTHER CHEMICALS USED FOR DUST SUPPRESSION MUST BE APPROVED BY THE EPA PRIOR TO THEIR USE.
- K. RUBBISH, TRASH, GARBAGE, LITTER, OR OTHER SUCH MATERIALS SHALL BE DEPOSITED INTO SEALED, COVERED, LEAK PROOF CONTAINERS. CONTAINERS SHALL BE DISPOSED OF PROPERLY WHEN CAPACITY IS REACHED. MATERIALS SHALL BE PREVENTED FROM LEAVING THE PREMISES THROUGH THE ACTION OF WIND OR STORMWATER.
- L. ALL STORM WATER POLLUTION PREVENTION MEASURES AND CONTROLS PRESENTED ON THIS PLAN, AND IN THE STORM WATER POLLUTION PREVENTION PLAN, SHALL BE INITIATED PER THE SEQUENCE OF CONSTRUCTION AS NOTED.
- M. DISTURBED PORTIONS OF THE SITE WHERE CONSTRUCTION ACTIVITY HAS BEEN TEMPORARILY SUSPENDED FOR 14 DAYS, SHALL HAVE TEMPORARILY STABILIZATION IN PLACE NO LATER THAN 14 DAYS FROM THE LAST DATE OF CONSTRUCTION ACTIVITY OCCURRING THESE AREAS.
- N. DISTURBED PORTIONS OF THE SITE WHERE CONSTRUCTION ACTIVITY HAS PERMANENTLY STOPPED SHALL HAVE PERMANENT CONTROLS IN PLACE NO LATER THAN 14 DAYS AFTER THE LAST CONSTRUCTION ACTIVITY OCCURRING IN THESE AREAS.
- O. IF THE ACTION OF VEHICLES OR EQUIPMENTS TRAVELING OVER THE CONSTRUCTION ENTRANCES IS NOT SUFFICIENT TO REMOVE THE MAJORITY OF DIRT OR MUD FROM LEAVING THE SITE, THEN THE LENGTH OF THE EXIT SHOULD BE EXTENDED TO PROVIDE ADDITIONAL TIRE ROTATIONS. LARGER ROCK MAY BE USED TO CREATE A SUFFICIENT JARRING MOTION OR INSTALL A TIRE WASH OFF WITH A SEDIMENT TRAP BEFORE LEAVING THE SITE.
- P. ALL MATERIALS SPILLED, DROPPED, WASHED, OR TRACKED FROM VEHICLES ONTO ROADWAYS OR INTO STORM DRAINS MUST BE REMOVED IMMEDIATELY.
- Q. THE OPERATOR IN CHARGE OF THE DAILY SITES ACTIVITIES WILL BE RESPONSIBLE FOR REMOVING SEDIMENT OR SOILS ACCUMULATING MORE THAN 50% OF THE DESIGN CAPACITY IN DETENTION PONDS, SILT FENCING OR OTHER SIMILAR EROSION CONTROLS.
- R. ON-SITE & OFFSITE SOIL STOCKPILE AND BORROW AREAS SHALL BE PROTECTED FROM EROSION AND SEDIMENTATION THROUGH IMPLEMENTATION OF BEST MANAGEMENT PRACTICES, AS REQUIRED PER THE CONSTRUCTION GENERAL PERMIT. STOCKPILE AND BORROW AREA LOCATIONS SHALL BE NOTED ON THE ESC PLAN AND PERMITTED IN ACCORDANCE WITH LOCAL AUTHORITIES HAVING JURISDICTIONAL CONTROL.
- S. SLOPES SHALL BE LEFT WITH CROSS SLOPE GRADING PATTERN AND IN A ROUGHENED CONDITION DURING THE GRADING PHASE TO REDUCE RUNOFF VELOCITIES AND EROSION RILLS. EXCESSIVE SLOPES MAY REQUIRE ADDITIONAL INDUSTRY STANDARD CONTROLS TO PREVENT EROSION.
- T. DUE TO THE GRADE CHANGES DURING THE DEVELOPMENT OF THE PROJECT, THE OPERATOR IN CONTROL OF THE SITE'S DAILY ACTIVITIES SHALL BE RESPONSIBLE FOR ADJUSTING AND MAINTAINING ALL EROSION CONTROL TO PREVENT EROSION.
- U. ALL DISTURBED AREAS SHALL BE SUPPRESSED BY WATER AND ALL CONTROLS LEFT IN GOOD WORKING CONDITION AT THE END OF EACH WORKING DAY, THIS INCLUDES REPLACEMENT OF SILT FENCING AND/OR OTHER SURFACE CONTROLS, TRACK OUT SWEEP CLEAN, BACKFILL OF OPEN TRENCHES AND ANY OTHER EROSION CONTROLS.

ESC PLAN STANDARD NOTES:

1. ALL EROSION AND SEDIMENT CONTROL (ESC WORK) ON THESE PLANS, EXCEPT AS OTHERWISE STATED OR PROVIDED HEREON SHALL BE PERMITTED, CONSTRUCTED, INSPECTED, AND MAINTAINED IN ACCORDANCE WITH:
 - a. THE CITY ORDINANCE § 14-5-2-11; THE ESC ORDINANCE,
 - b. THE EPA'S 2022 CONSTRUCTION GENERAL PERMIT (CGP); AND
 - c. THE CITY OF ALBUQUERQUE CONSTRUCTION BMP MANUAL.
2. ALL BMP'S MUST BE INSTALLED PRIOR TO BEGINNING ANY EARTH MOVING ACTIVITIES EXCEPT AS SPECIFIED HEREON IN THE PHASING PLAN. CONSTRUCTION OF EARTHEN BMPS'S SUCH AS SEDIMENT TRAPS, SEDIMENT BASINS, AND DIVERSION BERMS SHALL BE COMPLETED AND INSPECTED PRIOR TO ANY OTHER CONSTRUCTION OR EARTHWORK. SELF-INSPECTION IS REQUIRED AFTER INSTALLATION OF THE BMP'S AND PRIOR TO BEGINNING CONSTRUCTION.
3. SELF-INSPECTIONS -- AT A MINIMUM A ROUTINE COMPLIANCE SELF-INSPECTION IS REQUIRED TO REVIEW THE PROJECT FOR COMPLIANCE WITH THE CONSTRUCTION GENERAL PERMIT ONCE EVERY 14 DAYS AND AFTER ANY PRECIPITATION EVENT OF 1/4 INCH OR GREATER UNTIL THE SITE CONSTRUCTION HAS BEEN COMPLETED AND THE SITE DETERMINED AS STABILIZED BY THE CITY. REPORTS OF THESE INSPECTIONS SHALL BE KEPT BY THE PERSON OR ENTITY AUTHORIZED TO DIRECT THE CONSTRUCTION ACTIVITIES ON THE SITE AND MADE AVAILABLE UPON REQUEST.
4. CORRECTIVE ACTION REPORTS MUST BE KEPT BY THE PERSON OR ENTITY AUTHORIZED TO DIRECT THE CONSTRUCTION ACTIVITIES ON THE SITE AND MADE AVAILABLE UPON REQUEST.
5. STABILIZATION REPORTS MUST BE KEPT BY THE PERSON OR ENTITY AUTHORIZED TO DIRECT THE CONSTRUCTION ACTIVITIES ON THE SITE AND MADE AVAILABLE UPON REQUEST. REPORTS SHOULD INCLUDE RECORDS OF WEED REMOVAL PER CITY ORDINANCE (§ 9-8-1), STERILIZATION, SOIL TEST RESULTS AND RECOMMENDATION, MATERIALS AND MANUFACTURER'S SPECIFICATIONS FOR APPLICATION RATES, ESTIMATED FUNCTIONAL LONGEVITY, METHODS OF APPLICATION, INSPECTION AND MAINTENANCE. THE REDUCED SELF-INSPECTION SCHEDULE IN CGP 4.4.1 APPLIES TO STABILIZED AREA AND ANY DAMAGED OR WORN STABILIZATION MUST BE IDENTIFIED IN THE REPORTS ALONG WITH WEED PROBLEMS. CORRECTIVE ACTIONS FOR STABILIZATION SHALL BE DOCUMENTED IN A STABILIZATION REPORT INCLUDING ACTUAL RATES AND DATES OF STABILIZATION, AND THE MATERIALS AND MANUFACTURER'S SPECIFICATIONS USED.
6. BMP'S SHALL BE INSPECTED AND MAINTAINED UNTIL ALL DISTURBED AREAS ARE STABILIZED IN ACCORDANCE WITH THE FINAL STABILIZATION CRITERIA (CGP 2.2.14.b). GENERALLY, ALL DISTURBED AREAS, OTHER THAN STRUCTURES AND IMPEROUS SURFACES, MUST HAVE UNIFORM PERENNIAL VEGETATION THAT PROVIDES 70 PERCENT OR MORE OF THE COVER PROVIDED BY NATIVE VEGETATION OR SEED THE DISTURBED AREA AND PROVIDE NON-VEGETATIVE MULCH THAT PROVIDES COVER AT LEAST THREE YEARS WITHOUT ACTIVE MAINTENANCE. FINAL STABILIZATION MUST BE APPROVED BY THE CITY OF ALBUQUERQUE PRIOR TO REMOVAL OF BMP'S AND DISCONTINUATION OF INSPECTIONS.

<div>ENGINEER'S SEAL</div> <div></div> <div>RONALD R. BOHANNAN P.E. #7868</div>	<div>BROADWAY/SUNPORT BLVD</div> <div>EROSION CONTROL NOTES</div>	<div>DRAWN BY PM</div>
		<div>DATE 7-1-24</div>
		<div>2022031 SWPPP</div>
	<div> TERRA WEST, LLC 5571 MIDWAY PARK PLACE NE ALBUQUERQUE, NM 87109 (505) 858-3100 www.tierrowestllc.com</div>	<div>SHEET # SW-2</div> <div>JOB # 2022031</div>



TOTOL VOLUME = 134 C.Y./AC
67 CU. YD./ACRE (EXCAVATED)

SECTION A-A

OUTLET DIM (FT.)

H
1.5
2.0
2.5
3.0
3.5
4.0
4.5
5.0

OUTLET (PERSPECTIVE)
TEMPORARY SEDIMENT TRAP
N.T.S.

"SWPPP INFORMATION" MUST BE DISPLAYED PROMINENTLY ACROSS THE TOP OF THE SIGN, AS SHOWN IN THE DETAIL.

SIGN TO BE CONSTRUCTED OF A RIGID MATERIAL, SUCH AS PLYWOOD OR OUTDOOR SIGN BOARD. SIGN MUST BE CONSTRUCTED IN A MANNER TO PROTECT DOCUMENTS FROM DAMAGE DUE TO WEATHER (WIND, SUN, MOISTURE, ETC.).

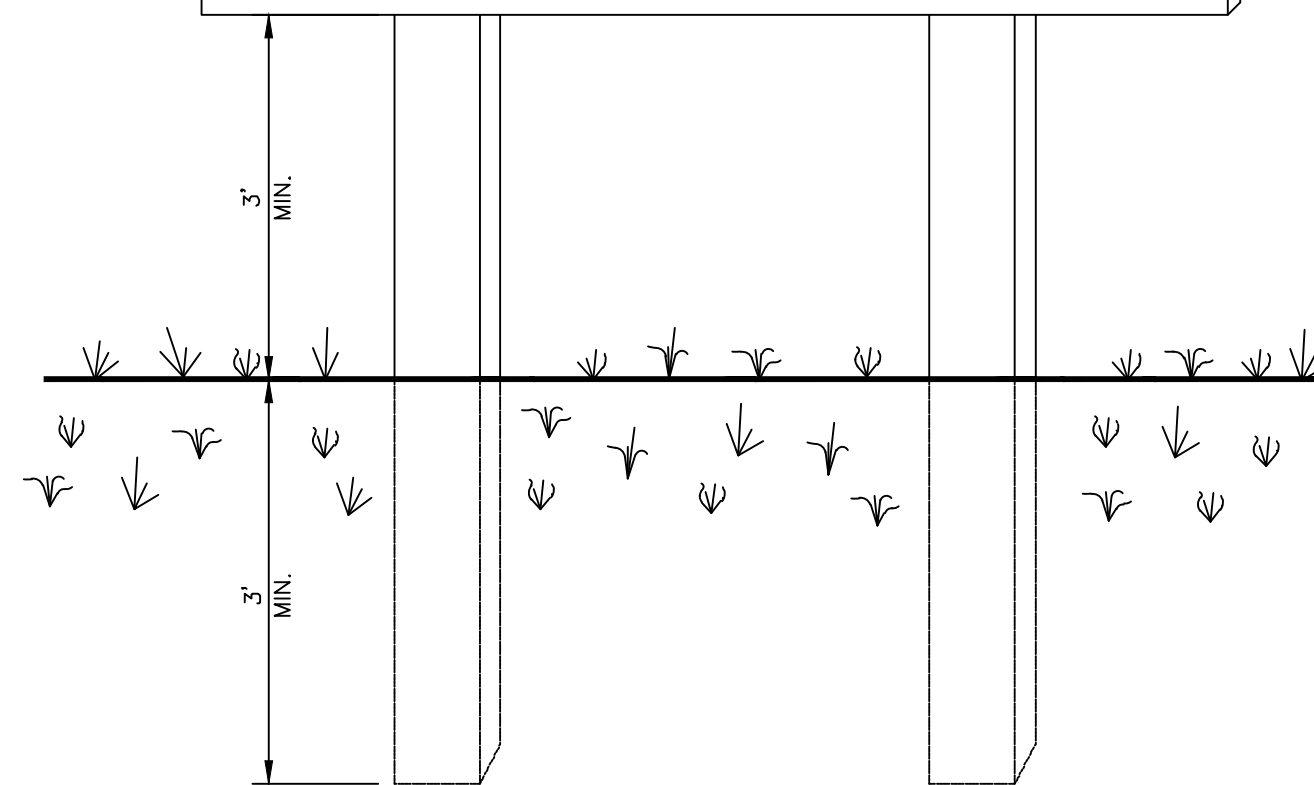
SWPPP INFORMATION

NPDES ID: NMR1001MP & NMR100161
CONTACT/NUMBER:

"IF YOU WOULD LIKE TO OBTAIN A COPY OF THE STORMWATER POLLUTION PREVENTION PLAN (SWPPP) FOR THIS SITE, CONTACT THE EPA REGION 6 OFFICE - SUZANNE PEREA AT (214) 665-7217"

"IF YOU OBSERVE INDICATORS OF STORMWATER POLLUTANTS IN THE DISCHARGE OR IN THE RECEIVING WATERBODY, CONTACT THE EPA THROUGH THE FOLLOWING WEBSITE: [HTTPS://EPA.GOV/ENFORCEMENT/REPORT-ENVIRONMENTAL-VOLATIONS.](https://epa.gov/enforcement/report-environmental-violations)"

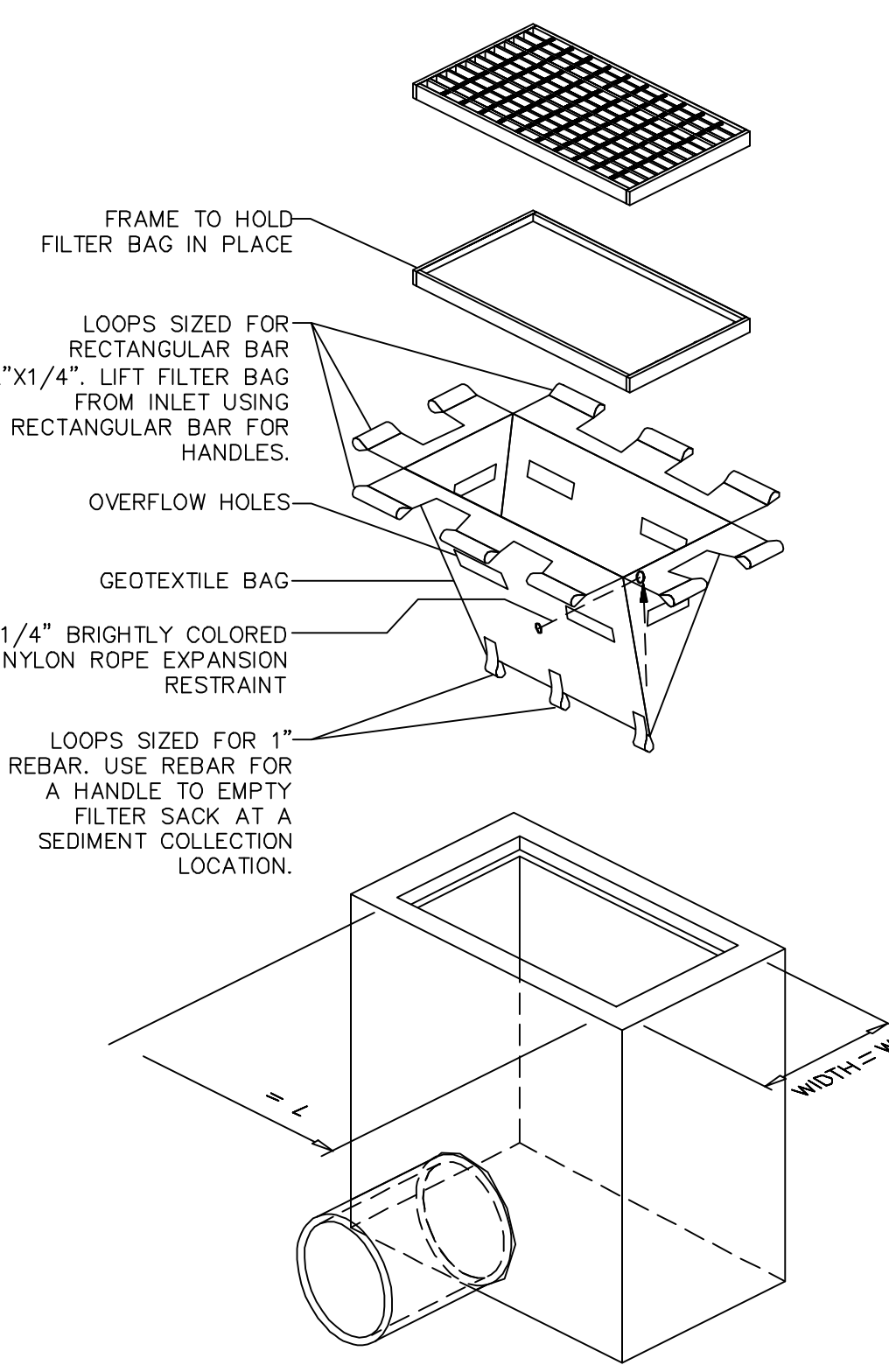
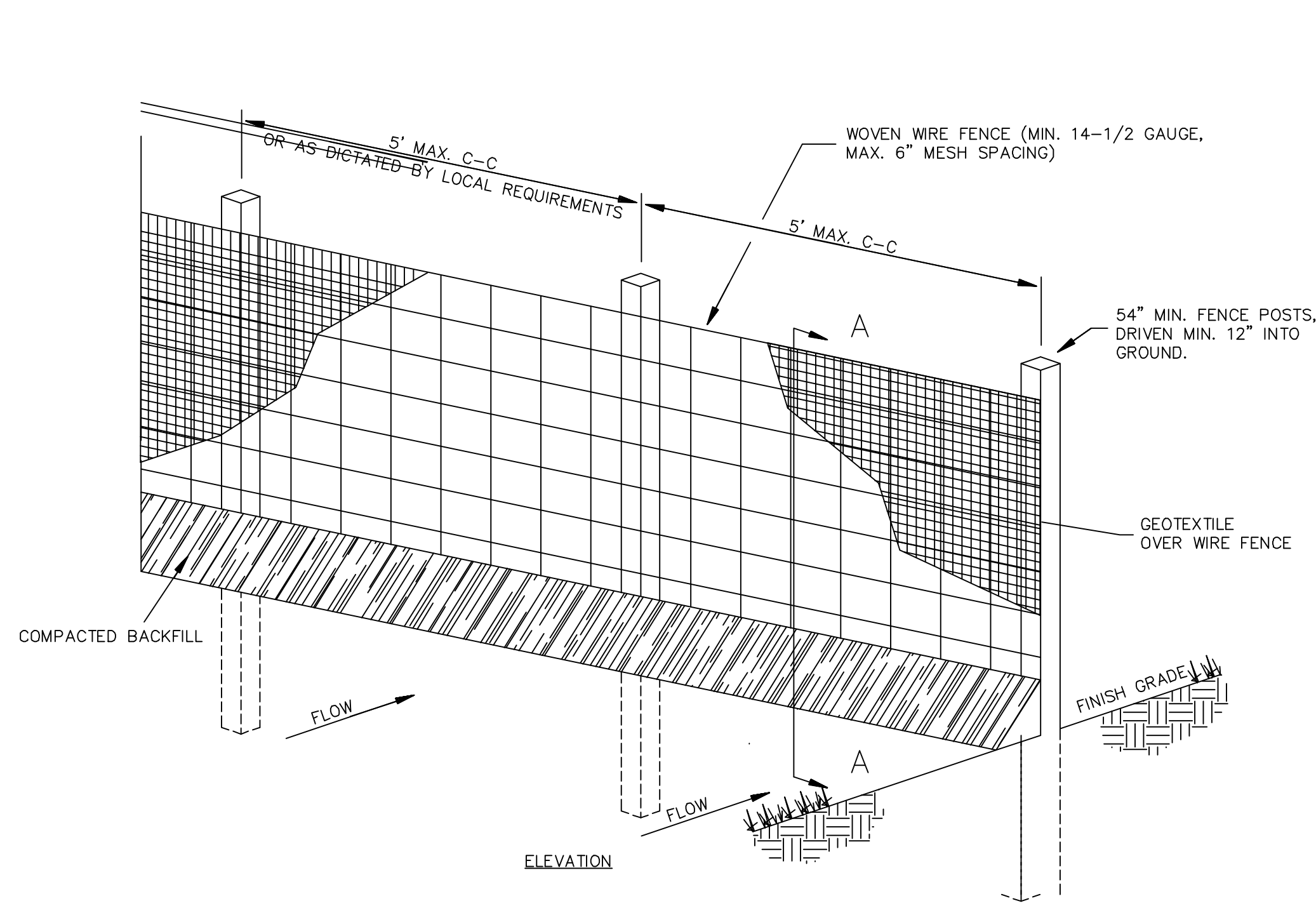
DETAILED DESCRIPTION OF THE LOCATION OF THE SWPPP DOCUMENTATION (BINDER AND SITE MAPS) ON THE SITE.



- NOTES:
- 1) THE SWPPP INFORMATION SIGN MUST BE LOCATED NEAR THE CONSTRUCTION EXIT OF THE SITE, SUCH THAT IT IS ACCESSIBLE AND VIEWABLE BY THE GENERAL PUBLIC, BUT NOT OBSTRUCTING VIEWS AS TO CAUSE A SAFETY HAZARD.
 - 2) ALL POSTED DOCUMENTS MUST BE MAINTAINED IN A CLEARLY READABLE CONDITION AT ALL TIMES THROUGHOUT CONSTRUCTION AND UNTIL THE NOTICE-OF-TERMINATION (NOT) IS FILED FOR THE PERMIT.
 - 3) CONTRACTOR SHALL POST OTHER STORM WATER AND/OR EROSION AND SEDIMENT CONTROL RELATED PERMITS ON THE SIGN AS REQUIRED BY THE GOVERNING AGENCY.
 - 4) SIGN SHALL BE LOCATED OUTSIDE OF PUBLIC RIGHT-OF-WAY AND EASEMENTS UNLESS APPROVED BY THE GOVERNING AGENCY.
 - 5) CONTRACTOR IS RESPONSIBLE FOR ENSURING STABILITY OF THE SWPPP INFORMATION SIGN.

SWPPP INFORMATION SIGN

N.T.S.



NOTES:

1. GEOTEXTILE SHALL BE A WOVEN POLYPROPYLENE FABRIC THAT MEETS OR EXCEEDS REQUIREMENTS IN THE SPECIFICATIONS TABLE.
2. PLACE AN OIL ABSORBENT PAD OR PILLOW OVER INLET GRATE WHEN OIL SPILLS ARE A CONCERN.
3. THE WIDTH, "W", OF THE FILTER SACK SHALL MATCH THE INSIDE WIDTH OF THE GRATED INLET BOX.
4. THE DEPTH, "D", OF THE FILTER SACK SHALL BE BETWEEN 18 INCHES AND 36 INCHES.
5. THE LENGTH, "L", OF THE FILTER SACK SHALL MATCH THE INSIDE LENGTH OF THE GRATED INLET BOX.

MAINTENANCE NOTES:

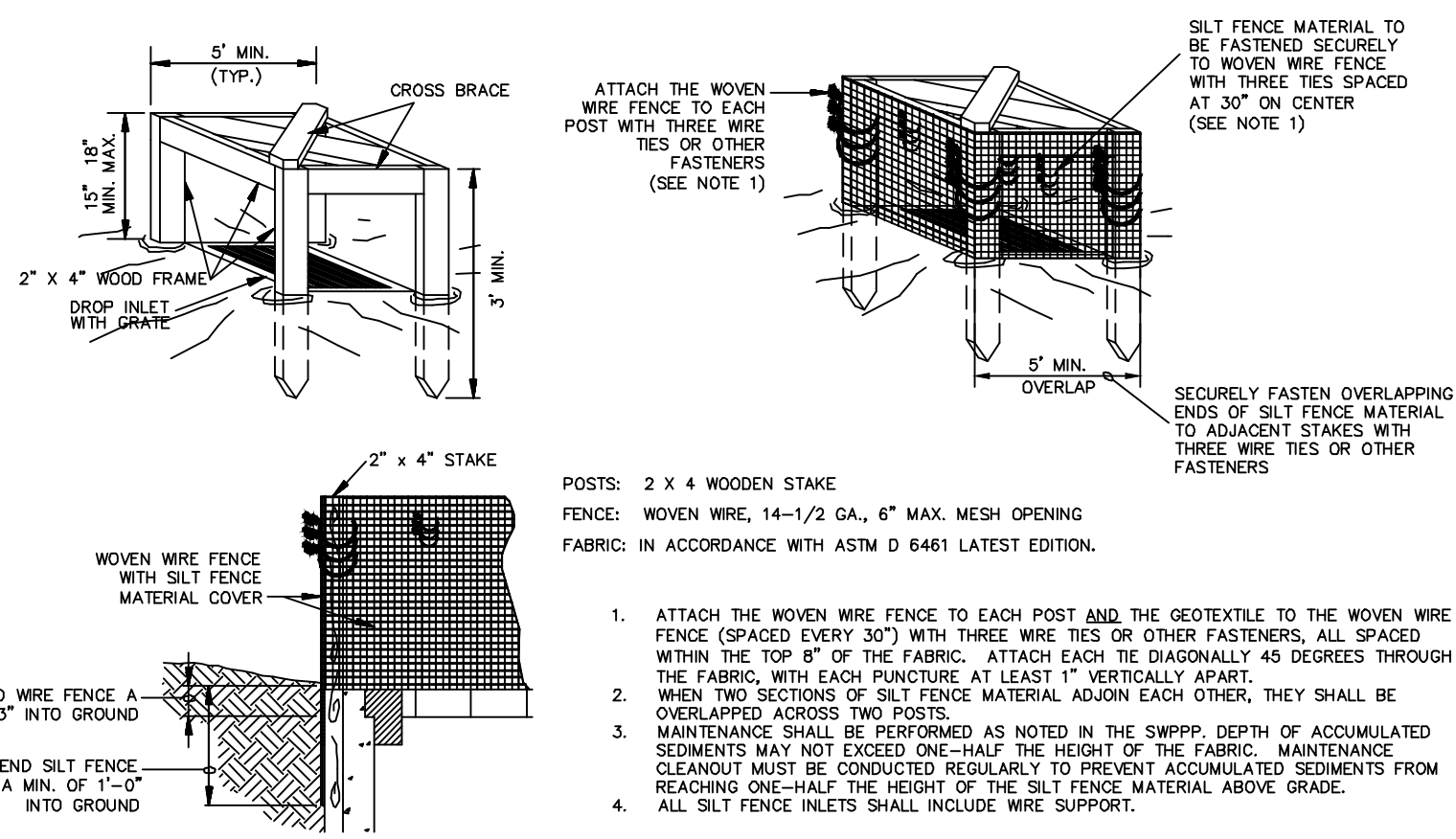
1. INLET PROTECTION DEVICES MUST BE INSPECTED FOR SEDIMENT ACCUMULATION WITHIN THE CATCH BASIN. REMOVE TRAPPED SEDIMENT WHEN BRIGHTLY COLORED EXPANSION RESTRAINT CAN NO LONGER BE SEEN.
2. REMOVAL OF SEDIMENT ACCUMULATED IN OR ADJACENT TO A STORM DRAIN INLET MUST BEGIN IMMEDIATELY UPON DISCOVERY, WITH COMPLETION OF THE ACTIVITY OCCURRING NO LATER THAN THE END OF THE FOLLOWING BUSINESS DAY.
3. INLET PROTECTION DEVICES SHALL BE INSPECTED FOR UNINTENDED BYPASS OR IMPROPER FLOW-RATES THAT MAY CAUSE DOWNSTREAM FLOODING.
4. CONTACT THE CEC FOR ALTERNATE INLET PROTECTION IF THE DESIGNED PROTECTION MAY IMPACT DOWNSTREAM BMPS, ADJACENT SLOPES, ETC., DUE TO PONDING ISSUES. ENSURE THAT NO UNDERMINING OF INLET PROTECTION DEVICES HAS OCCURRED.
5. INLET PROTECTION DEVICES AND BARRIERS SHALL BE REPAIRED OR REPLACED IF THEY SHOW SIGNS OF UNDERMINING OR DETERIORATION.

LOW TO MODERATE FLOW GEOTEXTILE FABRIC SPECIFICATION TABLE		
PROPERTIES	TEST METHOD	UNITS
GRAB TENSILE STRENGTH	ASTM D-4632	300 LBS
GRAB TENSILE ELONGATION	ASTM D-4632	20 %
PUNCTURE	ASTM D-4833	120 LBS
MULLEN BURST	ASTM D-3786	800 PSI
TRAPEZOID TEAR	ASTM D-4533	120 LBS
UV RESISTANCE	ASTM D-4355	80 %
APPARENT OPENING SIZE	ASTM D-4751	40 US SIEVE
FLOW RATE	ASTM D-4491	40 GAL/MIN/SQ FT
PERMITTIVITY	ASTM D-4491	0.55 SEC -1

MODERATE TO HIGH FLOW GEOTEXTILE FABRIC SPECIFICATION TABLE		
PROPERTIES	TEST METHOD	UNITS
GRAB TENSILE STRENGTH	ASTM D-4632	265 LBS
GRAB TENSILE ELONGATION	ASTM D-4632	20 %
PUNCTURE	ASTM D-4833	135 LBS
MULLEN BURST	ASTM D-3786	420 PSI
TRAPEZOID TEAR	ASTM D-4533	45 LBS
UV RESISTANCE	ASTM D-4355	90 %
APPARENT OPENING SIZE	ASTM D-4751	20 US SIEVE
FLOW RATE	ASTM D-4491	200 GAL/MIN/SQ FT
PERMITTIVITY	ASTM D-4491	1.5 SEC -1

INLET PROTECTION FILTER SACK

N.T.S.



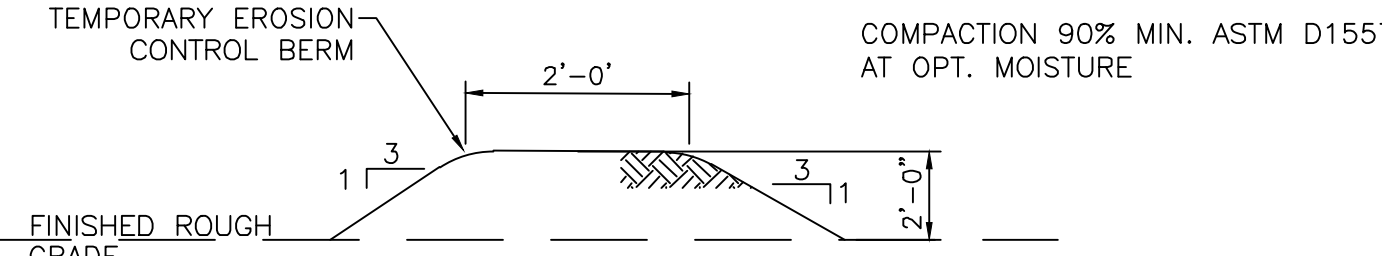
SILT FENCE INLET PROTECTION

N.T.S.

1. WOVEN WIRE FENCE TO BE FASTENED SECURELY TO FENCE POSTS WITH WIRE TIES.
2. GEOTEXTILE TO BE FASTENED SECURELY TO WOVEN WIRE FENCE WITH TIES SPACED EVERY 24" AT TOP AND MID SECTION.
3. WHEN TWO SECTIONS OF GEOTEXTILE ADJOIN EACH OTHER THEY SHALL BE OVERLAPPED BY SIX INCHES AND FOLDED.
4. MAINTENANCE SHALL BE PERFORMED AS NOTED IN THE EROSION CONTROL PLAN. COLLECTED MATERIAL SHALL BE REMOVED WHEN "BULGES" DEVELOP IN THE SILT FENCE.
5. ALL SILT FENCE SHALL INCLUDE WIRE SUPPORT UNLESS INDICATED OTHERWISE

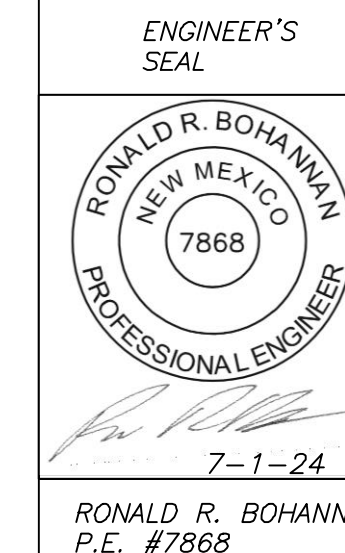
SEDIMENTATION/SILT FENCE WITH WIRE SUPPORT

N.T.S.



TEMPORARY EROSION CONTROL BERM DETAIL

NTS



BROADWAY/SUNPORT BLVD

EROSION CONTROL DETAILS

TERRA WEST, LLC
5571 MIDWAY PARK PLACE NE
ALBUQUERQUE, NM 87109
(505) 858-3100
www.tierrowestllc.com

DRAWN BY

PM

DATE

7-1-24

2022031 SWPPP

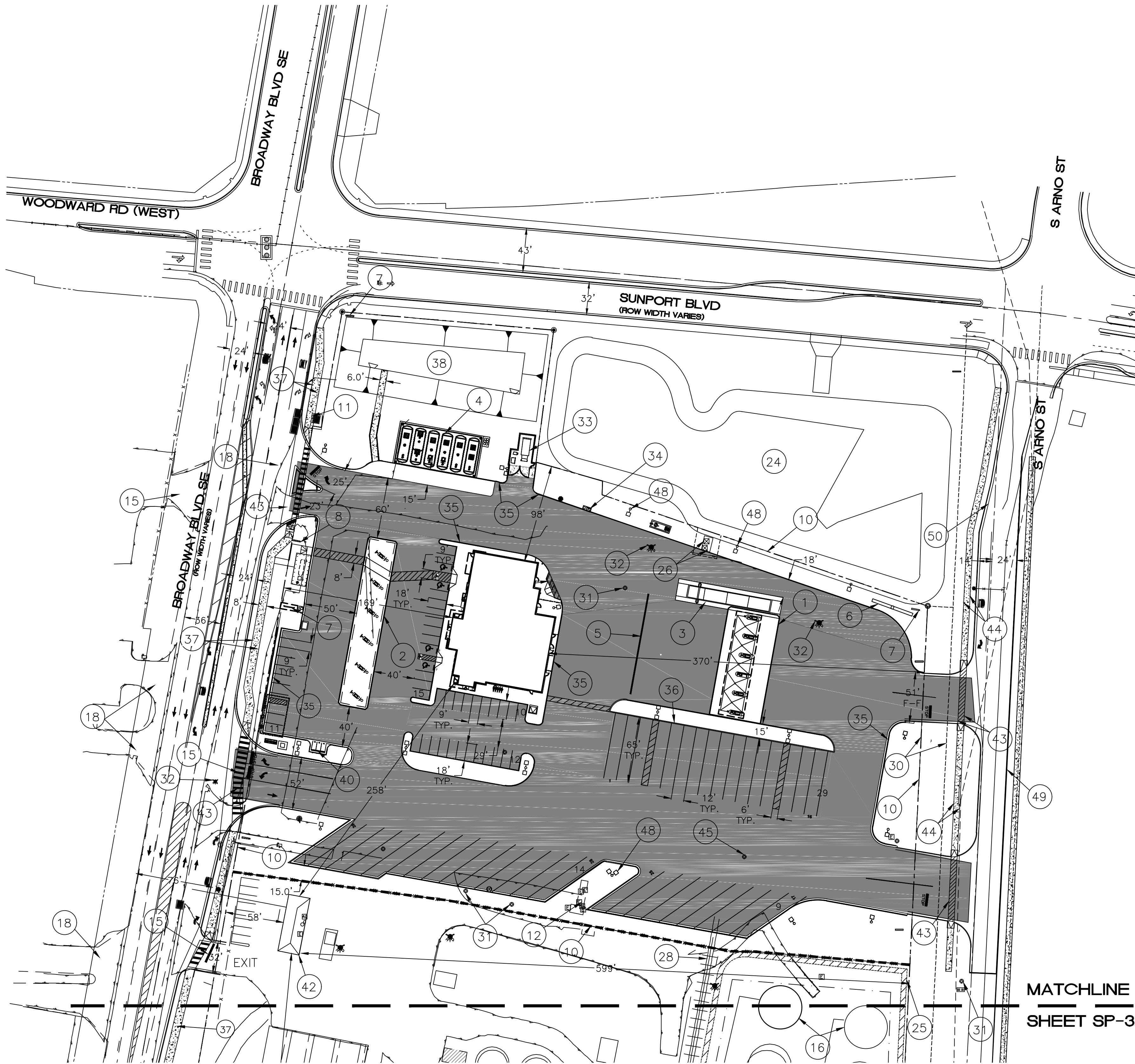
SHEET #

SW-3

JOB #

2022031

Z:\2022\20220301 Loves Support Station.dwg\Construction\20220301_SP.dwg Sep 06, 2024 -- 8:46am



CAUTION

ALL EXISTING UTILITIES SHOWN WERE OBTAINED FROM RESEARCH, AS-BUILTS, SURVEYS OR INFORMATION PROVIDED BY OTHERS. IT SHALL BE THE SOLE RESPONSIBILITY OF THE CONTRACTOR TO CONDUCT ALL NECESSARY FIELD INVESTIGATIONS PRIOR TO AND INCLUDING ANY EXCAVATION, TO DETERMINE THE ACTUAL LOCATION OF UTILITIES AND OTHER IMPROVEMENTS, PRIOR TO STARTING THE WORK. ANY CHANGES FROM THIS PLAN SHALL BE COORDINATED WITH AND APPROVED BY THE ENGINEER.

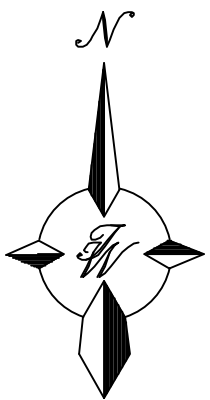
NOTE:

1 - AREA LIGHT SHALL BE FULLY SHIELDED AND MAXIMUM 35 FT HEIGHT

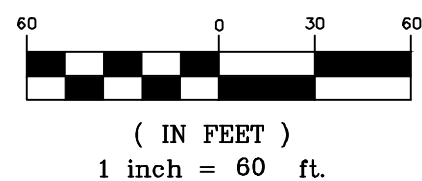
2 - THE EXISTING FUELING DEPOT ON SOUTHERN ~15 ACRE PORTION OF SITE IS TO REMAIN AS DEVELOPED AND IS INCLUDED IN THIS REQUEST AS AN AS BUILT SITE PLAN FOR CLARITY AND COMPLIANCE MOVING FORWARD

3 - STRUCTURE AND SIGN MATERIALS AND ANY FEATURES THERE IN SHALL COMPLY WITH THE GLARE AND REFLECTIVITY STANDARDS PER IDO 3-3(D)(2) REFLECTIVITY

MATCHLINE
SHEET SP-3



GRAPHIC SCALE



KEYED NOTES

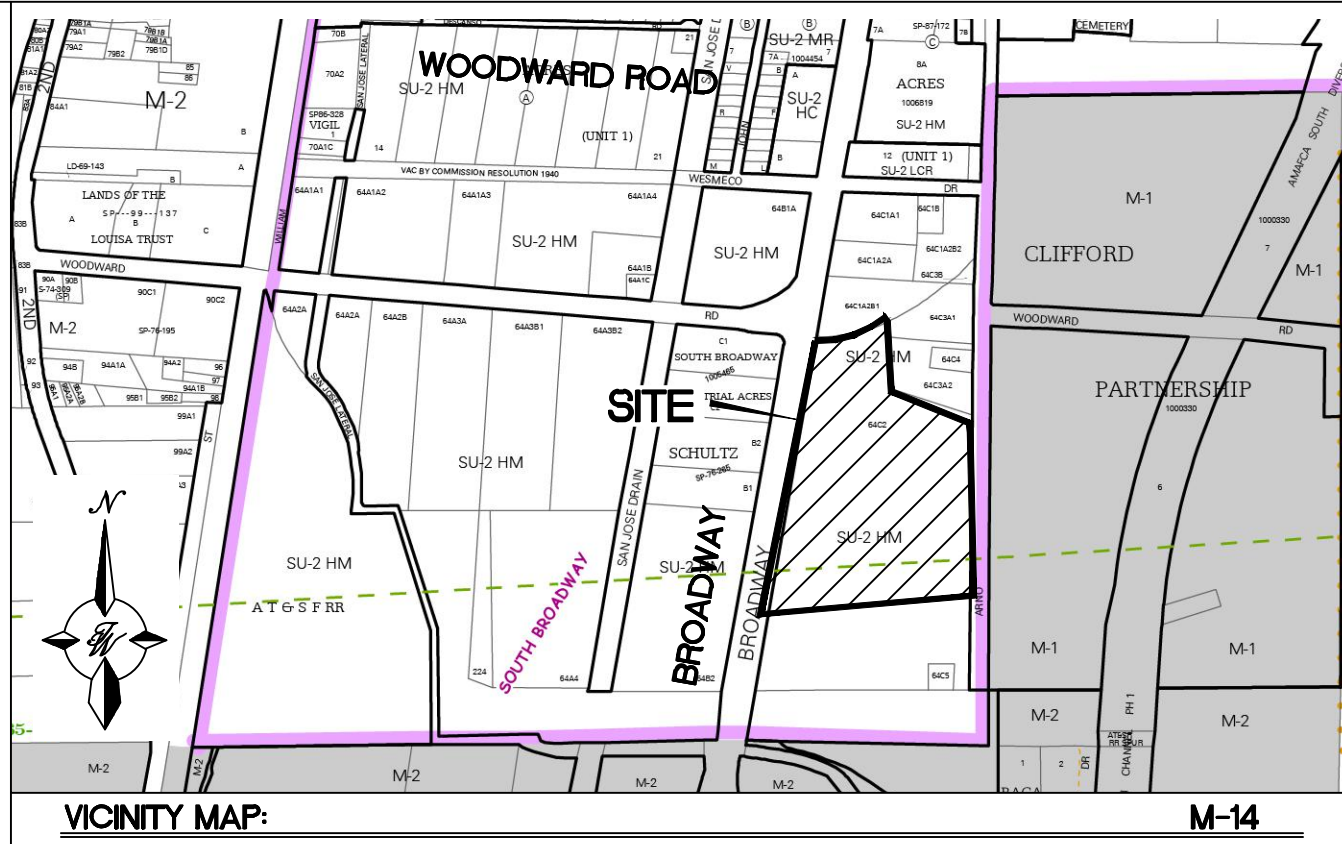
- 1 TRUCK CANOPY (51' x 108') (HEAVY VEHICLE)
- 2 AUTO CANOPY (29' x 168') (LIGHT VEHICLE)
- 3 CAT SCALE
- 4 UNDER GROUND FUEL TANK FARM
- 5 PULL FORWARD LINE
- 6 POLE SIGN
- 7 MONUMENT SIGN
- 8 PRICE SIGN
- 9 LOADING ZONE
- 10 LIMITS OF LOVE'S TRAVEL STOP DEVELOPMENT
- 12 EXISTING ELECTRICAL PANELS TO REMAIN
- 15 EXISTING GATED ACCESS W/ CROSS WALK STRIPE
- 16 EXISTING STORAGE TANK TO REMAIN (TYP.)
- 17 PEDESTRIAN CONNECTION STRIPING
- 18 EXISTING NON-GATED ACCESS W/ CROSS WALK STRIPE
- 24 MUNICIPAL STORM DRAIN POND
- 25 FUEL SPILL CONTAINMENT BERM TO REMAIN
- 26 EXISTING TRANSFORMERS TO REMAIN
- 28 EXISTING RAIL SPUR TO REMAIN
- 30 EXISTING 25' UTILITY EASEMENT
- 31 EXISTING MONITORING WELLS TO BE ADJUSTED TO GRADE
- 32 EXISTING FIRE HYDRANT TO BE REMOVED
- 33 TRASH COMPACTOR
- 34 RV DUMPSTATION
- 35 6" HEADER CURB
- 36 8" HEADER CURB
- 37 8' PAVED TRAIL
- 38 STORM DRAIN POND
- 40 MOTORCYCLE PARKING SEE DETAIL SHEET DET-2
- 41 BICYCLE PARKING (5 SPACES)
- 42 EXISTING OFFICE BUILDING TO REMAIN
- 43 CROSS WALK STRIPING PER CROSSWALK DETAIL ON SHEET DET-1
- 44 6' PEDESTRIAN SIDEWALK PER COA STD DWG #2430
- 45 EXISTING MONITORING WELL TO BE ABANDONED
- 48 AREA LIGHT (TYP)
- 49 TEMPORARY ASPHALT CURB
- 50 STANDARD CURB & GUTTER
- 51 3' OPAQUE (CMU) SCREEN WALL

PROJECT NUMBER: _____
APPLICATION NUMBER: _____

Is an Infrastructure List required? () Yes () No If Yes, then a set of approved DRC plans with a work order is required for any construction within Public Right-of-Way or for construction of public improvements.

DFT SITE DEVELOPMENT PLAN APPROVAL

TRAFFIC ENGINEERING, TRANSPORTATION DIVISION	Date
ABCWUA	Date
PARKS AND RECREATION DEPARTMENT	Date
HYDROLOGY	Date
CODE ENFORCEMENT	Date
* ENVIRONMENTAL HEALTH DEPARTMENT (CONDITIONAL)	Date
SOLID WASTE MANAGEMENT	Date
PLANNING DEPARTMENT	Date



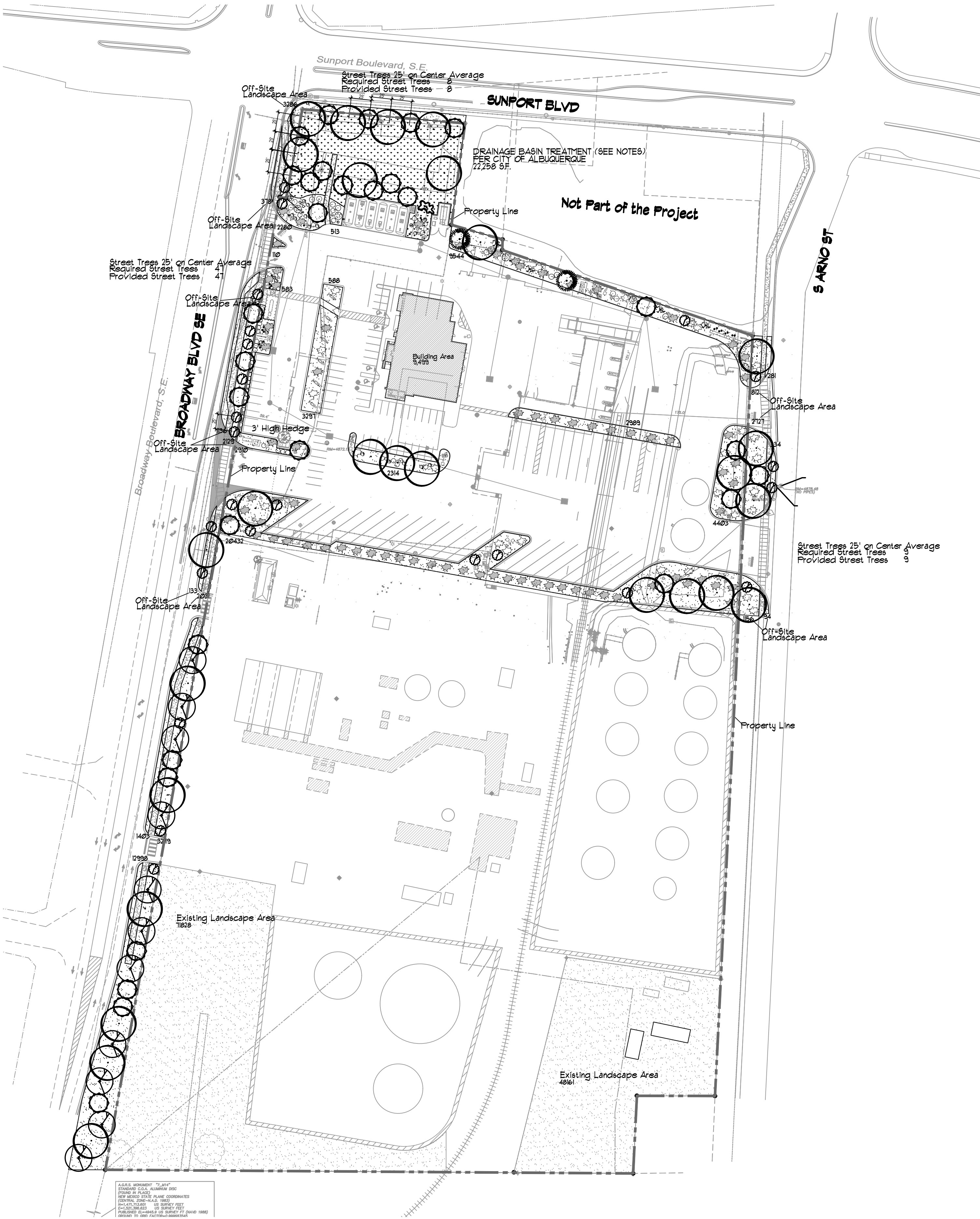
SITE DATA

PROPOSED USAGE:	LIGHT VEHICLE FUELING, HEAVY VEHICLE FUELING, GENERAL RETAIL (SMALL, RESTAURANT)
ZONE:	NR-LM
LOT AREA:	
LOVE'S TRAVEL STOP	292,169 SF (6.707 ACRES)
FUELING DEPOT	494,353 SF (11.353 ACRES)
OVERALL	786,522 SF (18.06 ACRES)
ADDRESS:	3200 BROADWAY BLVD. S.E. ALBUQUERQUE N.M., 87105
BUILDING AREA:	9,499 S.F.
BUILDING COVERAGE:	3.23%
PARKING REQUIRED:	10 SPACES (1 SPACE/1000 SF FOR HEAVY VEHICLE FUELING) 40 SPACES (4 SPACES/1000 SF FOR LIGHT VEHICLE FUELING)
*GENERAL RETAIL SMALL USE IS INCIDENTAL TO LIGHT VEHICLE FUELING	
	24 SPACES (8 SPACE/1000 SQ. FT GFA FOR RESTAURANT) 74 SPACES TOTAL
PARKING PROVIDED:	48 SPACES - AUTO 41 SPACES - TRUCK 89 SPACES - TOTAL
EXISTING FUEL DEPOT	10 SPACES (1 SPACE/1000 SF FOR HEAVY VEHICLE FUELING) 40 SPACES (4 SPACES/1000 SF FOR LIGHT VEHICLE FUELING) 24 SPACES (8 SPACE/1000 SQ. FT GFA FOR ONE BUILDING) 74 SPACES TOTAL
HC PARKING REQUIRED:	4 SPACES (1 VAN)
HC PARKING PROVIDED:	4 SPACES (1 VAN)
MOTORCYCLE SPACES REQUIRED:	3 SPACES
MOTORCYCLE SPACES PROVIDED:	3 SPACES
BICYCLE SPACES REQUIRED:	8 SPACES (10% OF REQ. PARKING)
BICYCLE SPACES PROVIDED:	8 SPACES
EXISTING FUELING BUILDING	1364 SF
EXISTING PARKING FUELING DEPOT	10 SPACES
FUTURE PARKING FUELING DEPOT	10 SPACES

LEGEND

=====	CURB & GUTTER	-----	EXISTING LANE
-----	BOUNDARY LINE	-----	EXISTING STRIPING
-----	EASEMENT	=====	ASPHALT PAVING AREA
-----	CENTERLINE	=====	SPILL CONTAINMENT AREA
-----	RIGHT-OF-WAY	=====	PARKING LOT LIGHT FIXTURE
=====	BUILDING	=====	EXISTING TRAFFIC SIGNAL
=====	SIDEWALK		
=====	RETAINING WALL		
=====	STREET LIGHTS		
-----	LANE		
-----	STRIPING		
-----	EXISTING CURB & GUTTER		
-----	EXISTING BOUNDARY LINE		

REV.			
2	6-10-24	ADDED SCREEN WALL AND NOTE	PM
1	05-13-2024	BUILDING PERMIT COMMENTS	RMG
NO.	DATE	REMARKS	BY
REVISIONS			
ENGINEER'S SEAL		BROADWAY/SUNPORT BLVD	DRAWN BY PM
VINCENT P. CARRIA		TRAVEL CENTER SITE PLAN	DATE 7-1-24
NEW MEXICO			2022031_SP
REGISTERED PROFESSIONAL ENGINEER			SHEET #
7-1-24			SP-2
TERRA WEST, LLC			JOB #
5571 MIDWAY PARK PLACE NE			2022031
ALBUQUERQUE, NM 87109			
(505) 858-3100			
www.tierrowestllc.com			



LANDSCAPE LEGEND

QTY	SIZE	COMMON/BOTANICAL	H2O USE
-----	------	------------------	---------

Trees

	11	2" cal	Chinese Pistache <i>Pistacia chinensis</i>	961.62	10577.82	M+
	21	2" cal	Honey Locust <i>Gleditsia triacanthos</i>	1589.62	42919.74	M
	2	6 - 8'	Austrian Pine <i>Pinus nigra</i>	490.62	98124	M
	1	6-8'	Crape Myrtle Multi Stem <i>Lagerstroemia indica</i>	314	314	M
	30	6-8'	Desert Willow Multi Stem <i>Chilopsis linearis</i>	490.62	14718.6	M
	24	15 Gal.	Oklahoma Redbud <i>Cercis reniformis</i>	113.04	2712.96	M
	97	Total Trees	Total Tree Coverage	7224.36		

Shrubs & Groundcovers

	2	5 Gal	Existing Shrubs	10x10	185	157	M
	6	5 Gal	Spanish Broom <i>Coryopteris x clandonensis</i>	10x10	185	471	M
	4	5 Gal	Bird of Paradise <i>Caesalpinia gilliesii</i>	10x10	185	314	L
	20	5 Gal	India Hawthorne <i>Raphiolepis indica</i>	3x5	19.62	392.4	M
	33	5 Gal	Winter Jasmine <i>Jasminum nudiflorum</i>	4x12	113.04	3730.32	M
	75	5 Gal	Buffalo Juniper <i>Juniperus sabina</i> "Buffalo" (FEMALE ONLY)	1x12	113.04	8478	M
	2	5 Gal	Cherry Sage <i>Salvia greggii</i>	2x3	7.06	14.12	M
	11	5 Gal	Blue Mist <i>Coryopteris x clandonensis</i>	3x3	7.06	77.66	M
	41	5 Gal	Fern Bush <i>Chamaebatiaria millefolium</i>	5x6	28.26	1158.66	L
	7	5 Gal	Apache Plume <i>Fallugia paradoxa</i>	6x7	38.46	269	L
	5	5 Gal	Chamisa <i>Chrysothamnus nauseosus</i>	5x7	38.46	192.3	L
	25	5 Gal	Feather Reed Grass <i>Calamagrostis arudinacea</i>	2.5x2	3.14	78.5	M
	231	Total Shrubs	Total Shrub Coverage		15332.96		
	23	2-3cf	Boulders To be placed at contractor discretion				
	80312		Landscape Gravel / Filter Fabric 3/4" Crushed Grey				
	23876		Drainage Basin Treatment, (See Notes) Native Seeding Mix Per COA				
	119989		Existing Landscape Area Natural Landscape				
	224177		Total Landscape Provided				

LANDSCAPE CALCULATIONS

TOTAL LOT AREA (sf)	186,522
TOTAL BUILDING AREA (sf)	9,499
TOTAL NET LOT AREA (sf)	177,023
LANDSCAPE REQUIREMENT	X .15
TOTAL LANDSCAPE REQUIRED	116,553

TOTAL ON-SITE LANDSCAPE PROVIDED	145,333
TOTAL LIVE PLANT COVER REQUIRED	108,993
TOTAL LIVE PLANT COVER PROVIDED	109,421.80
TOTAL GROUND COVER REQUIRED	36,333
DRAINAGE BASIN, NATIVE SEED (SEE NOTES)	23876
TOTAL GROUND COVER PROVIDED	392,08.96

LANDSCAPE NOTES:

Landscape maintenance shall be the responsibility of the Property Owner. The Property Owner shall maintain street trees in a living, healthy, and attractive condition.

It is the intent of this plan to comply with the City Of Albuquerque Water Conservation Landscaping and Water Waste Ordinance planting restriction approach. Approval of this plan does not constitute or imply exemption from water waste provisions of the Water Conservation Landscaping and Water Waste Ordinance.

It is the intent of this plan to comply with the City of Albuquerque Landscape Regulations Applicable to Apartments and Nonresidential Development, Revised 6/24.

Water management is the sole responsibility of the Property Owner. All landscaping will be in conformance with the City of Albuquerque Zoning Code, Street Tree Ordinance, Pollen Ordinance, and Water Conservation Landscaping and Water Waste Ordinance. In general, water conservative, environmentally sound landscape principles will be followed in design and installation.

Landscape areas in excess of 36 square feet shall be planted so as to achieve 75% Live Ground Cover at maturity.

Landscape Gravel over Filter Fabric to a minimum depth of 3" shall be placed in all landscape areas which are not designated to receive native seed, or other treatment.

Landscape shall be watered by a complete underground irrigation system operated by automatic timer. Trees shall have bubblers and shrubs shall have a minimum of 2 emitters per shrub. Trees and shrubs shall be zoned separately. Installation shall be completed within 60 days of the related building's occupancy.

Approval of this plan does not constitute or imply exemption from water waste provisions of the water conservation landscaping and water waste ordinance. Water management is the sole responsibility of the property owner. d between the Landscape Contractor and the General Contractor of the project prior to construction.

No substitutions, or alterations shall be made to this plan without the express written authorization of the Landscape Architect, and changes approved by the City of Albuquerque.

Clear Site Triangle Note:

Landscaping and signage will not interfere with clear site requirements. Signs, walls, trees and shrubbery between 3 and 8 feet tall, (as measured from the gutter pan) are not included within the clear site triangle.

Street Tree Notes:

Per Section 5-6(D) (1) (a) Required Street Trees. Trees are GENERALLY required along street frontages every 25 feet on center unless otherwise specified in Part 6-2-2 of ROA 1994 (Street Trees)

Section 6-6-2-5 Street Trees

(A)

- Size of the trees at maturity should be in proportion to the planting space provided for them. ... Smaller species of trees will require closer spacing, and larger trees will require greater spacing. Spacing shall be approved as part of the plan approval process.
- On sites where evenly spaced street trees are not possible, or do not conform to the overall design objectives of the site, provided that the number of trees equals or exceeds the number that would be required if the trees were evenly spaced

Drainage Basin Treatments
Per City of Albuquerque
Drainage Basin Treatments

The bottom and sides must be seeded with a native mix per City Standard specification 10122 depending on soil type for that City area. Please reference this native seed selection and the section on plan sheet.

For pond bottoms: Gravel 3/4 to 1 inch mulch One layer thick, not stacked

Native grass establishment must be achieved by the contractor within a 3 year time frame. Temporary irrigation or water trucks must be used when rain is lacking. Seeds must germinate in one year or reseeded will likely be needed.

Maintenance will be per City of Albuquerque Specification 10123.31 and 10123.32.

Contractor must weed the basin during/after the first growing season.

Needs city inspection. Stormwater Quality Ordinance-final stabilization must be accepted by the City.



danny@mitchellassociatesinc.com

505.639.9583

ENGINEER'S SEAL
Landscape Architect
STATE OF NEW MEXICO
DANNY D. MITCHELL
239
REGISTERED LANDSCAPE ARCHITECT
March 28, 2024
RONALD R. BOHANNAN
P.E. #7868

LOVES TRAVEL CENTER
3200 Broadway Blvd. S.E.
Landscape Plan
TIERRA WEST, LLC
5571 MIDWAY PARK PL NE
ALBUQUERQUE, NEW MEXICO 87109
(505) 858-3100
www.tierrowestllc.com

DRAWN BY
Paniz
DATE
06-02-23
SHEET #
LS-101
JOB #
2022031

