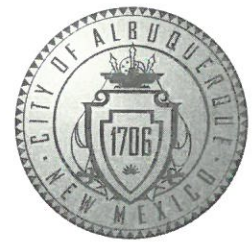


CITY OF ALBUQUERQUE



June 29, 2017

Stephan A. Dunbar
Modulus Architects
100 Sun Ave. NE, Suite 305
Albuquerque, NM 87109

Re: Blake's Lotaburger
1640 Gibson Blvd. SE
Traffic Circulation Layout
Architect's Stamp dated 3-10-17 (M15D012A)

Dear Mr. Dunbar,

The TCL submittal received 6-27-17 is approved for Building Permit. A copy of the stamped and signed plan will be needed for each of the building permit plans. Please keep the original to be used for certification of the site for final C.O. for Transportation.

When the site construction is completed and a Certificate of Occupancy (C.O.) is requested, use the original City stamped approved TCL for certification. Redline any minor changes and adjustments that were made in the field. A NM registered architect or engineer must stamp, sign, and date the certification TCL along with indicating that the development was built in "substantial compliance" with the TCL. Submit this certification TCL with a completed Drainage and Transportation Information Sheet to front counter personnel for log in and evaluation by Transportation.

Once verification of certification is completed and approved, notification will be made to Building Safety to issue Final C.O. To confirm that a final C.O. has been issued, call Building Safety at 924-3690.

Sincerely,

Logan Patz
Senior Engineer, Planning Dept.
Development Review Services

MA/LP via: email
C: CO Clerk, File



City of Albuquerque

Planning Department

Development & Building Services Division

DRAINAGE AND TRANSPORTATION INFORMATION SHEET (REV 09 2015)

Project Title: Blakes Lotaburger **Building Permit #:** BP-2017-08997 **City Drainage #:** M150012A
DRB#: _____ **EPC#:** _____ **Work Order#:** _____
Legal Description: Lot 9-B-1A, Kirtland Addition Block A; Tract A, Airport Center
City Address: 1640 Gibson Blvd SE

Engineering Firm: Wooten Engineering **Contact:** Jeffrey T. Wooten, P.E.
Address: 1005 21st Street SE, Suite A5, Rio Rancho, NM 87124
Phone#: 505-980-3560 **Fax#:** N/A **E-mail:** jeffwooten.pe@gmail.com

Owner: _____ **Contact:** _____
Address: _____
Phone#: _____ **Fax#:** _____ **E-mail:** _____

Architect: Modulus Architects **Contact:** Devin Nguyen
Address: 100 Sun Ave NE, Suite 305, Albuquerque, NM, 87109
Phone#: 505-338-1499 ext 1007 **Fax#:** N/A **E-mail:** devinn@modulusarchitects.com

Other Contact: _____ **Contact:** _____
Address: _____
Phone#: _____ **Fax#:** _____ **E-mail:** _____

Check all that Apply:

DEPARTMENT:
 HYDROLOGY/ DRAINAGE
 TRAFFIC/ TRANSPORTATION
 MS4/ EROSION & SEDIMENT CONTROL

CHECK TYPE OF APPROVAL/ACCEPTANCE SOUGHT:
 BUILDING PERMIT APPROVAL
 CERTIFICATE OF OCCUPANCY

TYPE OF SUBMITTAL:
 ENGINEER/ ARCHITECT CERTIFICATION

PRELIMINARY PLAT APPROVAL
 SITE PLAN FOR SUB'D APPROVAL
 SITE PLAN FOR BLDG. PERMIT APPROVAL
 FINAL PLAT APPROVAL
 SIA/ RELEASE OF FINANCIAL GUARANTEE
 FOUNDATION PERMIT APPROVAL
 GRADING PERMIT APPROVAL
 SO-19 APPROVAL
 PAVING PERMIT APPROVAL
 GRADING/ PAD CERTIFICATION
 WORK ORDER APPROVAL
 CLOMR/LOMR

CONCEPTUAL G & D PLAN
 GRADING PLAN
 DRAINAGE MASTER PLAN
 DRAINAGE REPORT
 CLOMR/LOMR
 TRAFFIC CIRCULATION LAYOUT (TCL)
 TRAFFIC IMPACT STUDY (TIS)
 EROSION & SEDIMENT CONTROL PLAN (ESC)
 OTHER (SPECIFY) _____

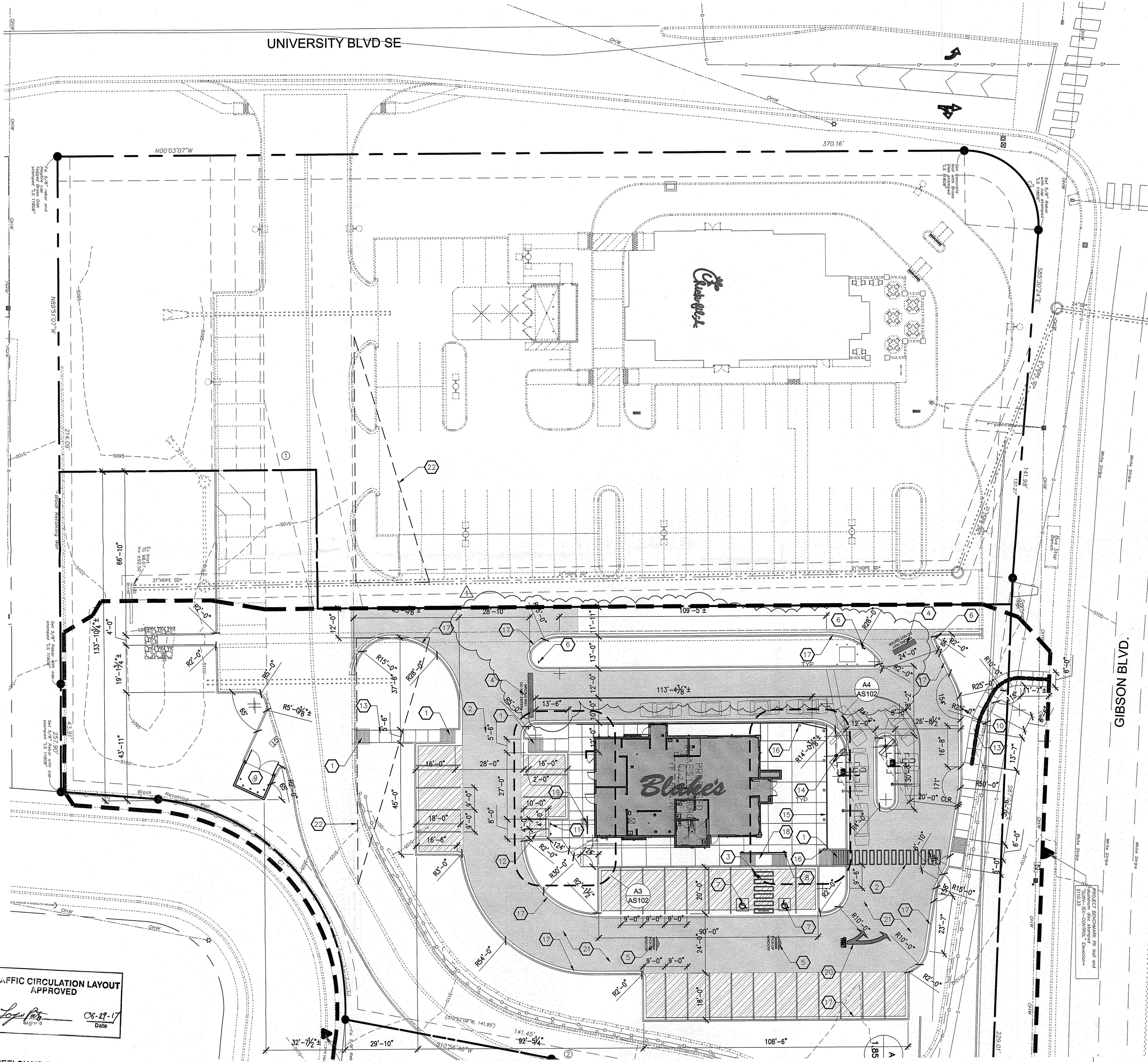


PRE-DESIGN MEETING
 OTHER (SPECIFY) _____

IS THIS A RESUBMITTAL?: Yes No

DATE SUBMITTED: 6/27/2017 By: Devin Nguyen

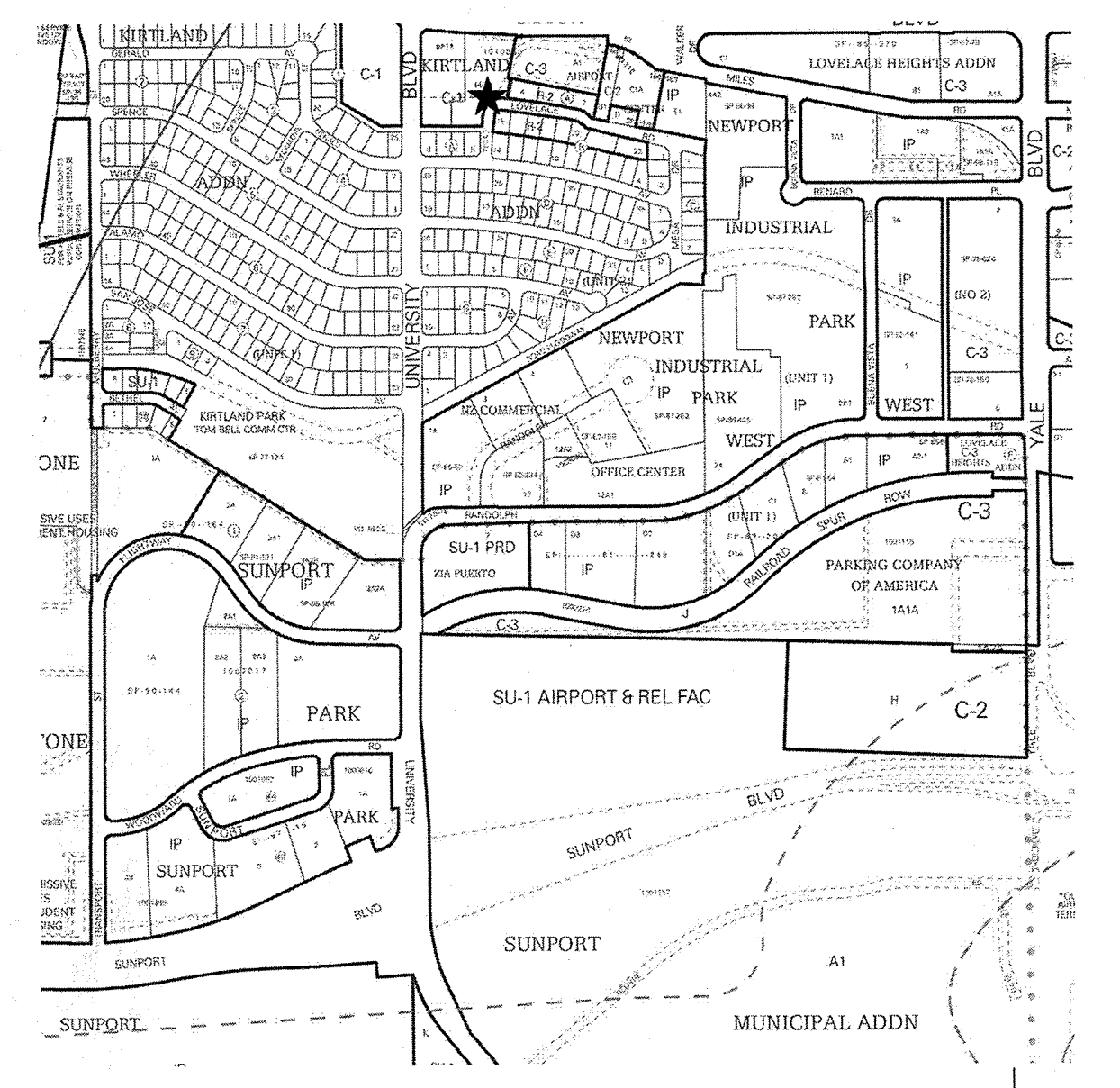
COA STAFF: ELECTRONIC SUBMITTAL RECEIVED: _____



TRAFFIC CIRCULATION LAYOUT APPROVED
Logan Patis
 Date 06-29-17

ALL WHEELCHAIR RAMP LOCATED WITHIN THE PUBLIC RIGHT OF WAY MUST HAVE TRUNCATED DOMES.

A1 TRAFFIC CIRCULATION LAYOUT PLAN
 SCALE: 1" = 20'-0"



VICINITY MAP
 SCALE: NTS
 ZONE MAP M-15-Z

LEGAL DESCRIPTION
 LOTS 9-B-1A, KIRTLAND ADDITION BLOCK A; TRACT A, AIRPORT CENTER.

SITE DATA
 LEGAL DESCRIPTION: LOTS 9-B-1A, KIRTLAND ADDITION BLOCK A; TRACT A, AIRPORT CENTER.
 UPC: 101505530848511714
 ADDRESS: 1640 GIBSON BLVD. SE
 PROPERTY AREA: 68,127 SF
 CURRENT ZONING: C-1
 BUILDING AREA: 2,955 GSF

EXISTING EASEMENTS
 ① EXISTING 20' PRIVATE WATERLINE EASEMENT.
 ② EXISTING 5' UTILITY AND DRAINAGE EASEMENT.

GENERAL NOTES

- "C" SERIES SHEETS APPLY TO THE ENTIRE SET OF DRAWINGS.
- INDICATED DIMENSIONS ARE TO FACE OF CONCRETE OR FACE OF FINISH; UNLESS OTHERWISE NOTED.
- PARKING AND ACCESSIBLE PAVEMENT MARKING AND STRIPING SHALL CONFORM TO THE NEW MEXICO COMMERCIAL BUILDING CODE SECTION 1110.3 #7.2.

KEYED NOTES

- SIDEWALK ACCESSIBLE RAMP: REFER TO A2/AS104 FOR ADDITIONAL INFORMATION.
- PATH WALK MARKING: REFER TO C3/AS104 FOR ADDITIONAL INFORMATION.
- HANDICAP PARKING ASLE: REFER TO C5/AS103 FOR ADDITIONAL INFORMATION.
- "DO NOT ENTER" MARKING: REFER TO B5/AS104 FOR ADDITIONAL INFORMATION.
- PAVEMENT DIRECTIONAL MARKING: REFER TO B2/AS104 FOR ADDITIONAL INFORMATION.
- "DO NOT ENTER" SIGNAGE: REFER TO C2/AS104 FOR ADDITIONAL INFORMATION.
- ACCESSIBLE MARKING: REFER TO C5/AS104 FOR ADDITIONAL INFORMATION.
- HANDICAP SIGNAGE, TYPICAL OF 2: REFER TO A1/AS104 FOR ADDITIONAL INFORMATION.
- REFUSE ENCLOSURE: REFER TO A1/AS102.
- MISCELLANEOUS SIGNAGE: SEE A1/AS103.
- MOTORCYCLE PARKING SIGNAGE, TYPICAL OF 2: SEE A2/AS103.
- MOTORCYCLE PARKING SPACE, TYPICAL OF 2.
- CONCRETE SIDEWALK: REFER TO A4/AS103 AND C3/AS103.
- PREFABRICATED ORDERING MENU/CANOPY (BY OTHER): CONTRACTOR TO PROVIDE ELECTRICAL POWER.
- CABLE RAILING (APPROXIMATELY 115'-0" LINEAR FEET): REFER TO A5/AS104.
- BOLLARD LIGHTING FIXTURE: REFER TO ELECTRICAL SITE PLAN ON SHEET ES101 FOR ADDITIONAL INFORMATION, TYPICAL OF 10.
- CURB AND GUTTER: REFER TO C1/AS103.
- TAPERED RAMP: REFER TO D2/AS102.
- BIKE RACK: REFER TO B1/AS102.
- PAVEMENT DIRECTIONAL MARKING: REFER TO B1/AS104.
- ASPHALT PAVEMENT.
- DASHED LINE INDICATES 30'x100' CLEAR SIGHT TRIANGLE.

GRAPHIC LEGEND

HEAVY DUTY ASPHALT: REFER TO B3/AS103.

LIGHT DUTY ASPHALT: REFER TO B5/AS103.

PARKING CALCULATION

BUILDING AREA	# SEATS	AREA (SQUARE FEET)	
BLAKE'S LOTABURGER RESTAURANT	37	2,955 SF	
KITCHEN AREA	N/A	832 SF	
TOTAL	37	1,388 SF	
PARKING REQUIREMENTS	RATIO	REQUIRED	PROVIDED
BLAKE'S LOTABURGER RESTAURANT	1/4 SEATS	10 SPACES	19 SPACES
KITCHEN AREA	1/200 SF	5 SPACES	8 SPACES
ACCESSIBLE PARKING SPACE	1/25 SPACES	2 SPACES	2 SPACES
MOTORCYCLE PARKING SPACE	---	2 SPACES	2 SPACES
BIKE PARKING SPACE	---	2 SPACES	4 SPACES

REV	DATE	BY	REVISION
6			
5			
4			
3			
2			
1			

MODULUS ARCHITECTS
 100 SUN AVENUE N.E., Ste 305
 ALBUQUERQUE, NEW MEXICO 87109
 PHONE (505) 338-1499 FAX (505) 338-1498

STATE OF NEW MEXICO
 REGISTERED ARCHITECT
 STEPHEN A. DUNBAR
 No. 4218
 03/10/2017

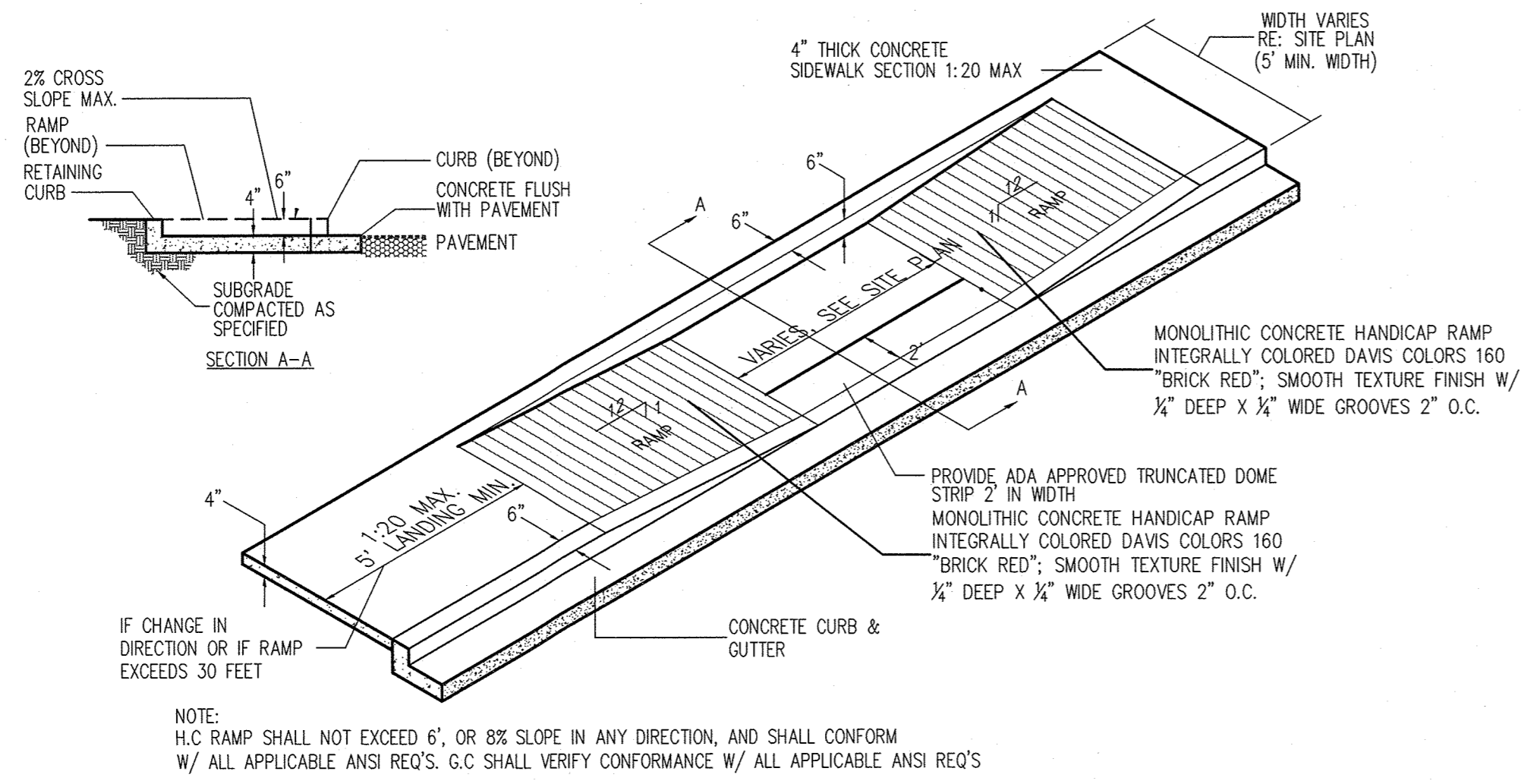
PROJECT TITLE: BLAKE'S LOTABURGER #6
 1640 GIBSON BLVD. SE
 ALBUQUERQUE, NEW MEXICO 87106

PROJECT MANAGER: DEWY NGUYEN
 JOB NO.: Blake's #6

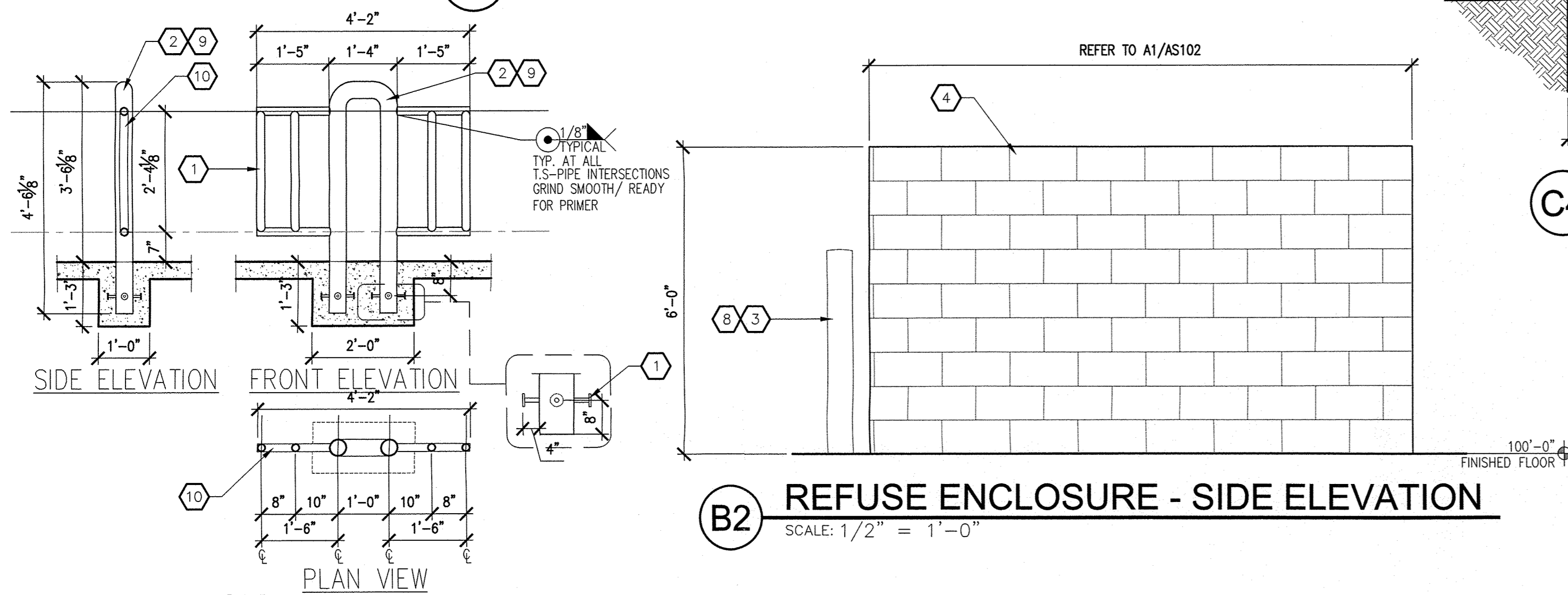
DATE: 03.10.2017
 SCALE: AS NOTED

DRAWN BY: DEWY NGUYEN
 SHEET TITLE: TRAFFIC CIRCULATION LAYOUT

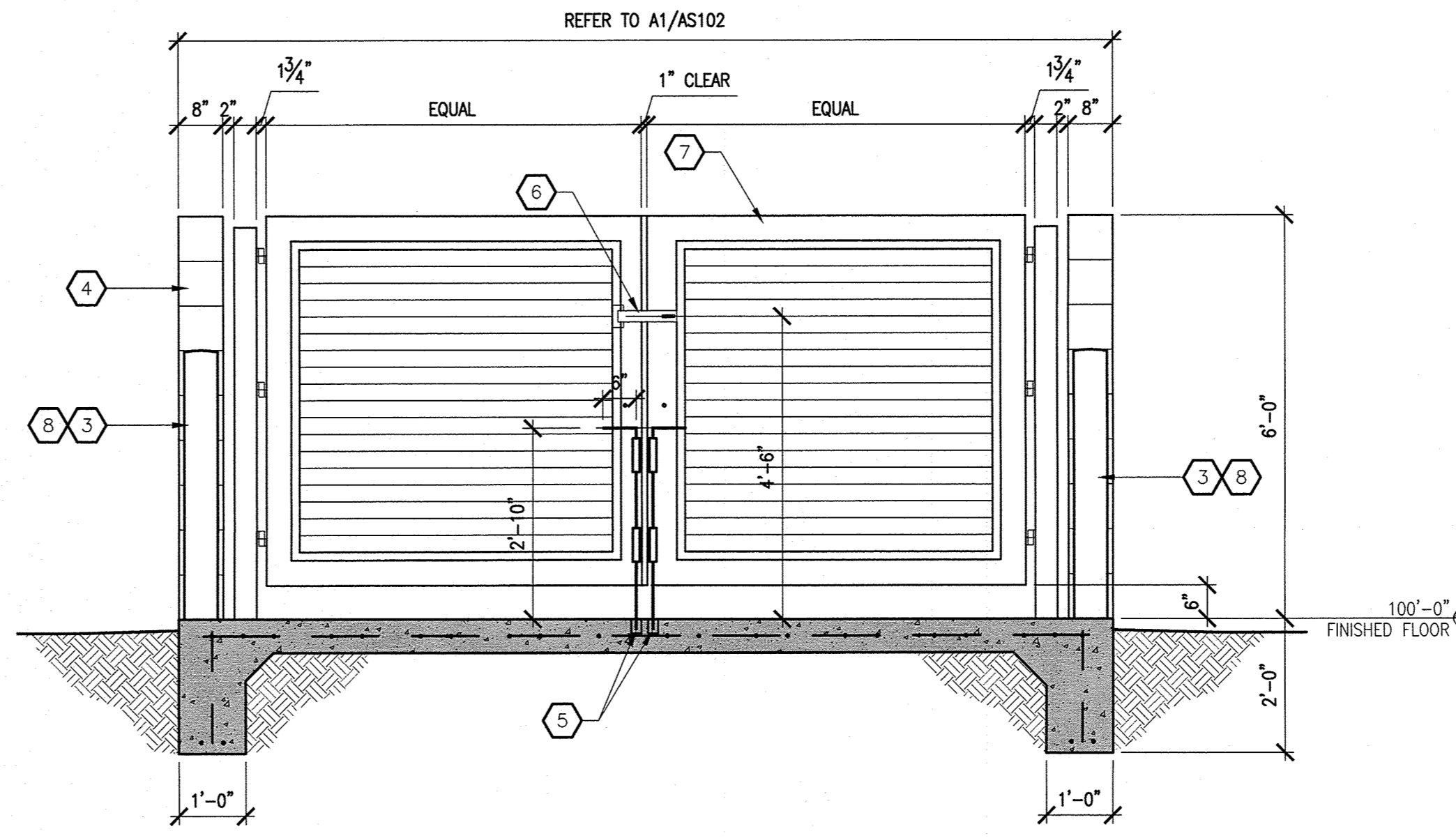
TCL



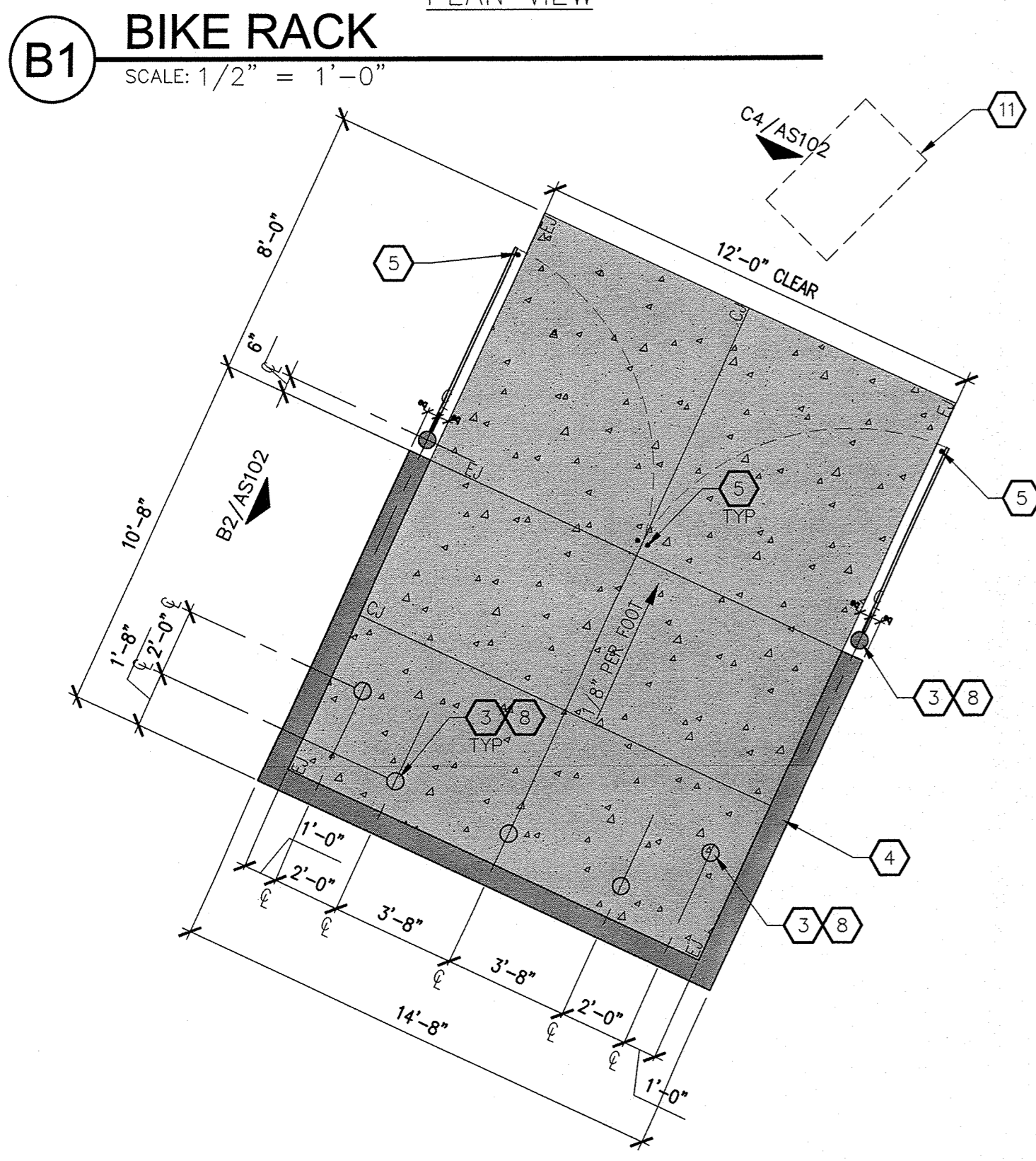
D2 TAPERED RAMP
SCALE: NTS



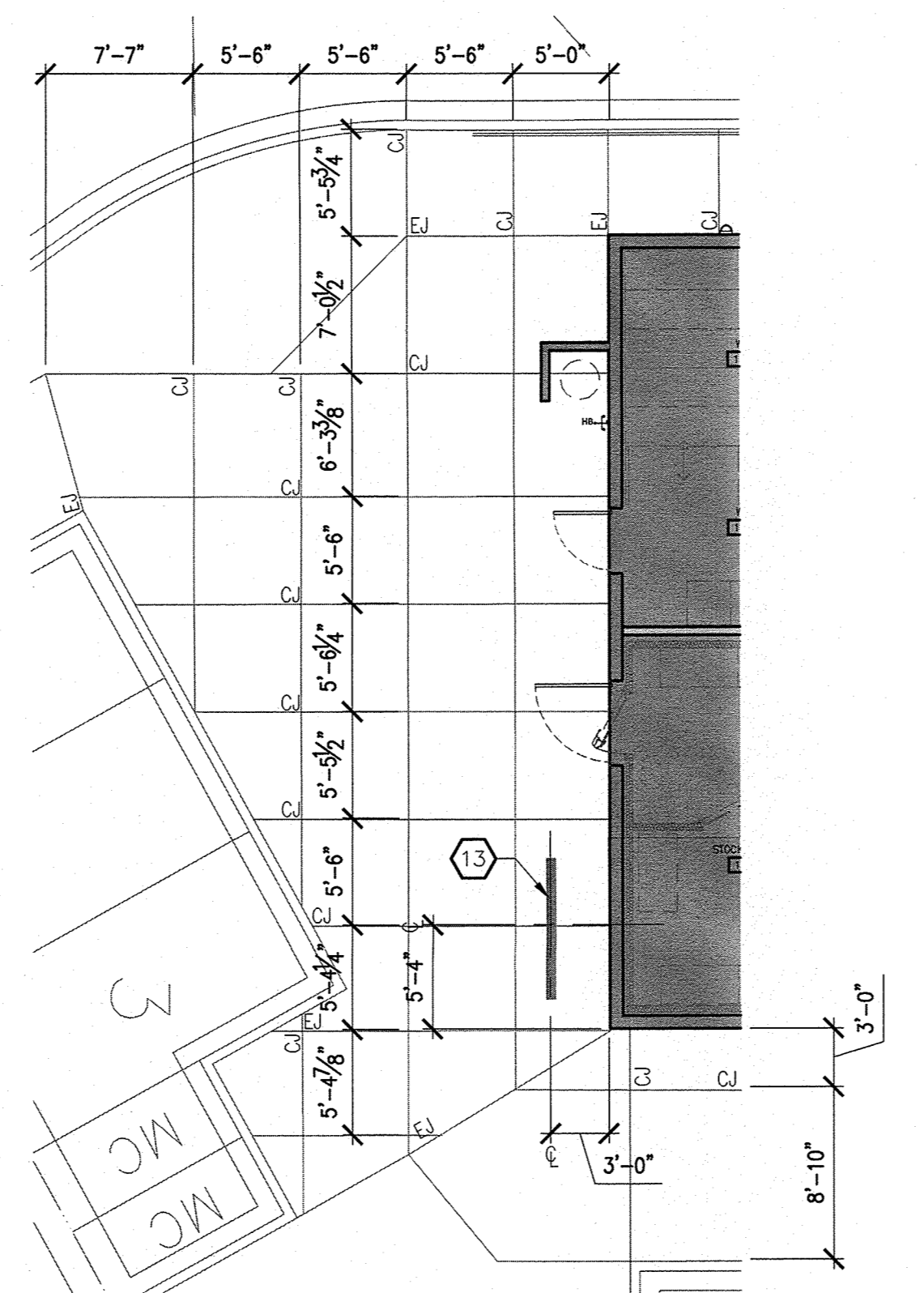
B2 REFUSE ENCLOSURE - SIDE ELEVATION
SCALE: 1/2" = 1'-0"



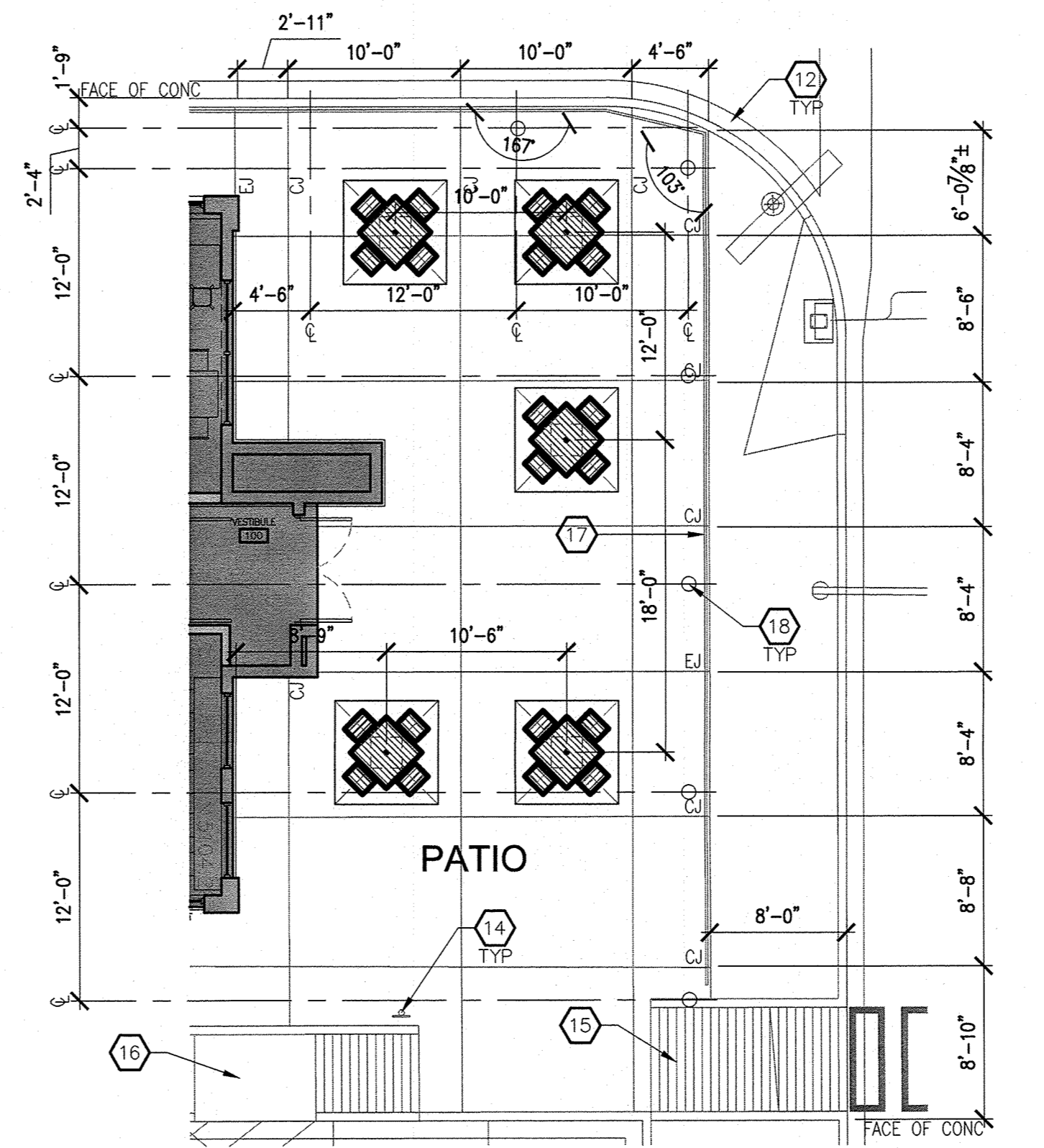
C4 REFUSE ENCLOSURE - FRONT ELEVATION
SCALE: 1/2" = 1'-0"



A1 REFUSE ENCLOSURE - PLAN
SCALE: 1/4" = 1'-0"



A3 ENLARGED PARTIAL SITE PLAN
SCALE: 1/8" = 1'-0"



A4 ENLARGED PARTIAL SITE PLAN
SCALE: 1/8" = 1'-0"

GENERAL NOTES

- "G" SERIES SHEETS APPLY TO THE ENTIRE SET OF DRAWINGS.
- INDICATED DIMENSIONS ARE TO FACE OF CONCRETE OR FACE OF FINISH, UNLESS OTHERWISE NOTED.
- INDICATED ELEVATIONS ARE BASED ON A FINISHED FLOOR OF 100'-0".

KEYED NOTES

- PROVIDE (4) 1/2" x 4" NELSON STUD ANCHORS @ EACH TUBE BASE.
- PRIME AND PAINT ALL STEEL MEMBERS FLAT BLACK.
- BOLLARD: REFER TO B4/AS104 FOR ADDITIONAL INFORMATION.
- 8" MASONRY WALL CONSTRUCTION: PAINT FINISH - SHERWIN WILLIAMS "NOMADIC DESERT" #SW6107; LIGHT BASE FINISH.
- DRILL HOLE IN CONCRETE SLAB FOR GATE PIN.
- WROUGHT IRON LATCH AND HASP: PAINT FINISH TO MATCH GATE.
- WROUGHT IRON GATE WITH GATE PIN: PAINT FINISH, COLOR TO BE SELECTED BY ARCHITECT.
- PAINT FINISH: SAFETY YELLOW.
- 4" STANDARD DUTY PIPE ANCHOR SUPPORT.
- VERTICAL/HORIZONTAL 1 1/2" STANDARD DUTY PIPE.
- DASHED LINE INDICATES HEAVY DUTY GREASE TRAP (ABLE TO WITHSTAND 57,000LB REFUSE TRUCK): REFER TO UTILITY PLAN ON SHEET C2.1 FOR ADDITIONAL INFORMATION.
- CURB AND GUTTER: REFER TO C1/AS103.
- BIKE RACK: REFER TO B1/AS102.
- HANDICAP SIGNAGE: REFER TO A1/AS104.
- SIDEWALK ACCESSIBLE RAMP: REFER TO A2/AS104.
- TAPERED RAMP: REFER TO D2/AS102.
- CABLE RAILING: REFER TO A5/AS103.
- BOLLARD LIGHTING FIXTURE: REFER TO ELECTRICAL SITE PLAN ON SHEET ES101.

GRAPHIC LEGEND

6" CONCRETE PAD (4,000 PSI) WITH 3/4" AGGREGATE AND 6x6-10/10 WWM OR EQUAL. SLOPE TO DRAIN 1/8" PER FOOT.

EJ CONCRETE EXPANSION JOINT: REFER TO D2/AS105.

CJ CONCRETE CONTROL JOINT: REFER TO D3/AS105.

REVISION	BY	DATE	REV	DATE

MODULUS ARCHITECTS
100 SUN AVENUE N.E., Ste 305
ALBUQUERQUE, NEW MEXICO 87109
PHONE (505) 338-1499 FAX (505) 338-1498

STATE OF NEW MEXICO
STEPHEN A. DUNBAR
No. 4218
REGISTERED ARCHITECT
03/10/2017

PROJECT TITLE: **BLAKE'S LOTABURGER #6**
1640 GIBSON BLVD. SE
ALBUQUERQUE, NEW MEXICO 87106

PROJECT MANAGER: **DEVIN NGUYEN**

DRAWN BY: **DEVIN NGUYEN**

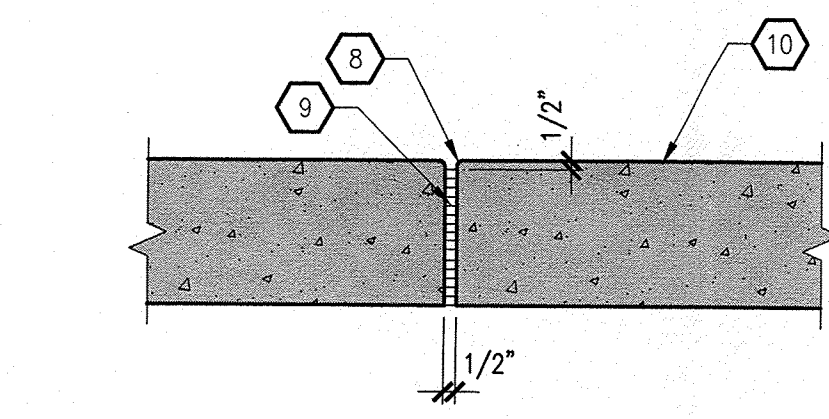
JOB NO.: **Blake's #6**

SHEET TITLE: **SITE DETAILS**

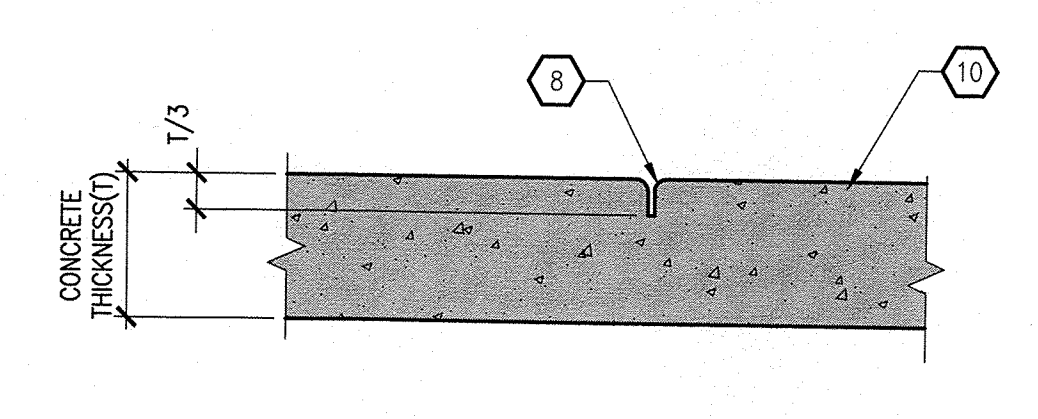
DATE: **03.10.2017**

SCALE: **AS NOTED**

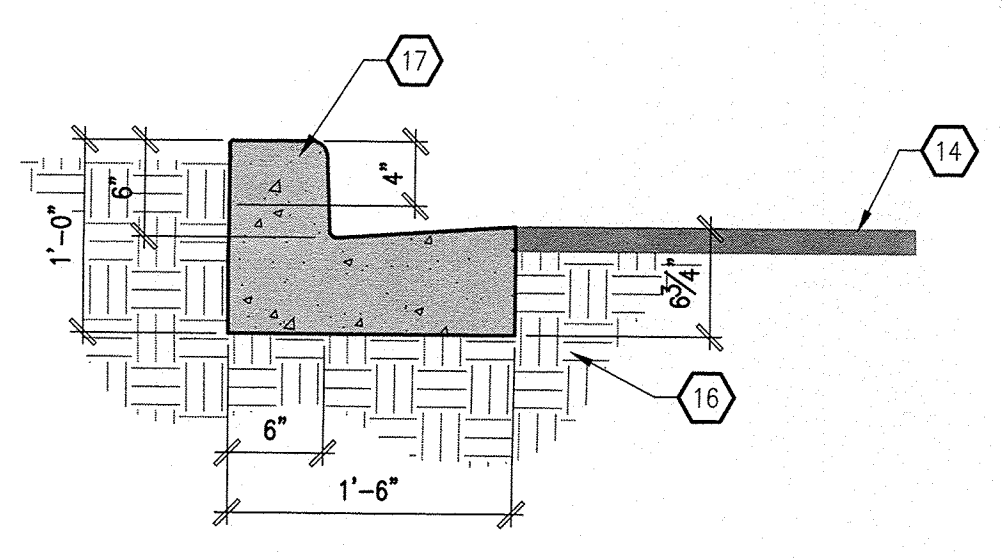
SHEET: **AS102**



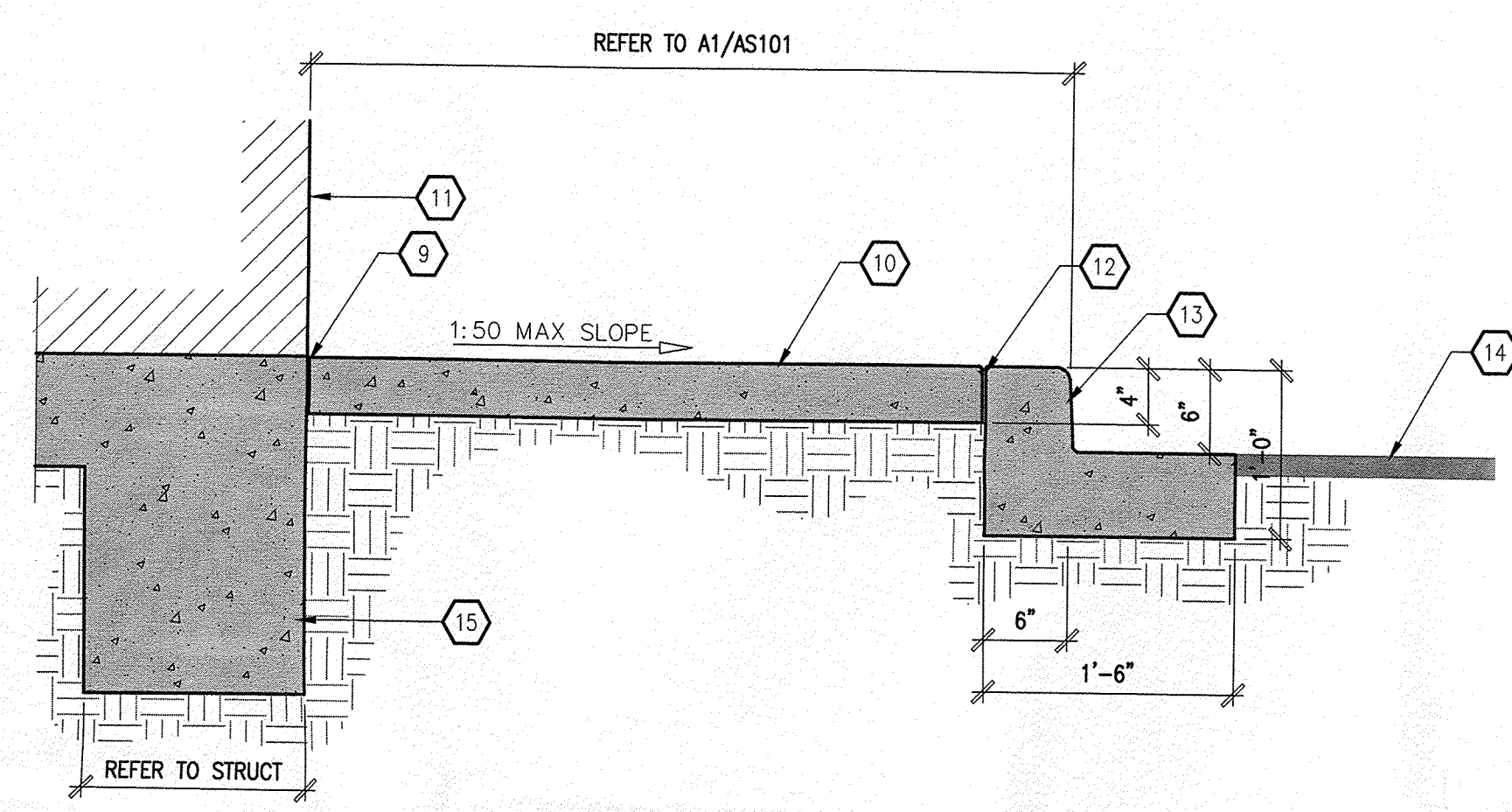
D2 CONCRETE EXPANSION JOINT
SCALE: 1-1/2" = 1'-0"



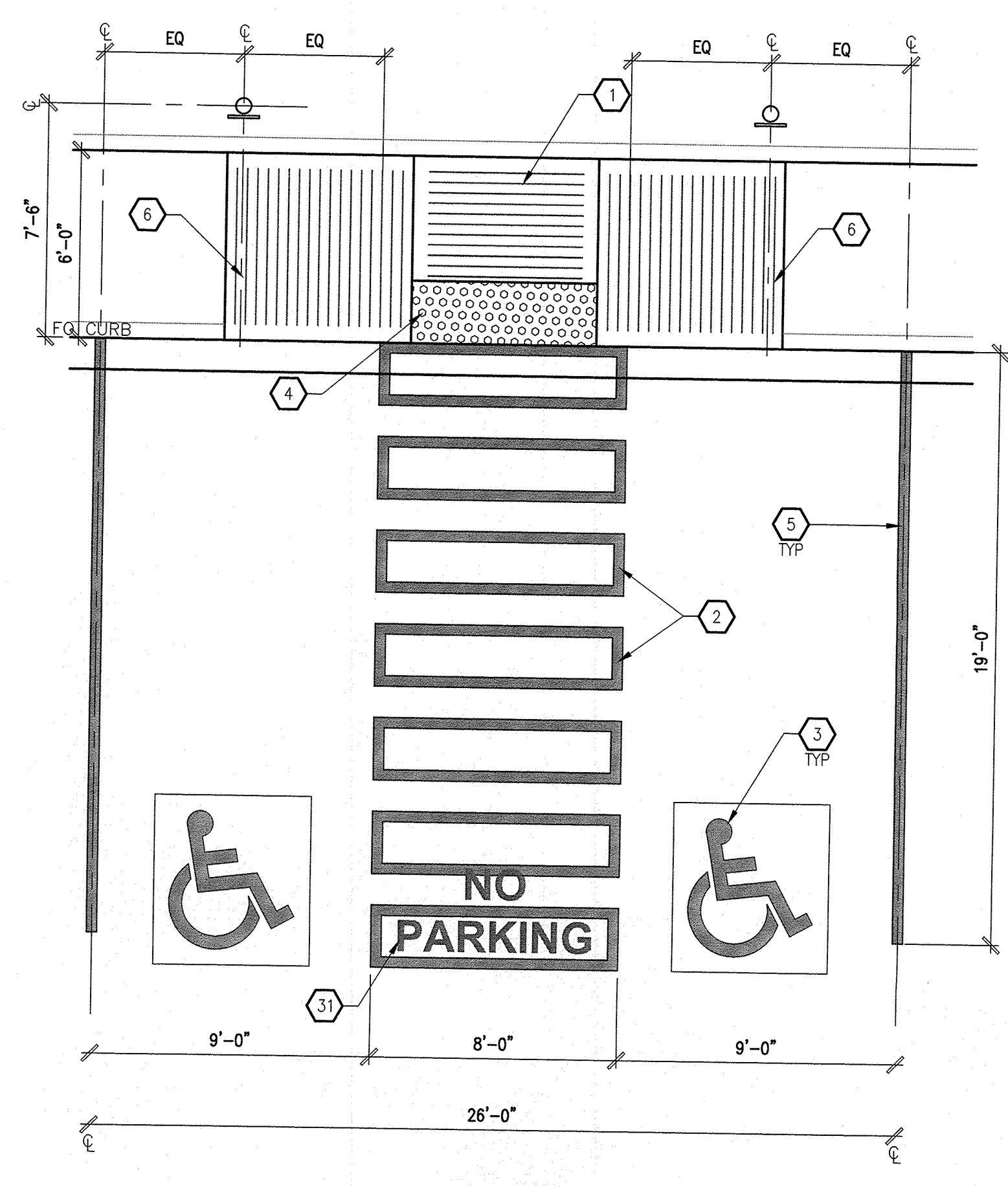
D3 CONCRETE CONTROL JOINT
SCALE: 1-1/2" = 1'-0"



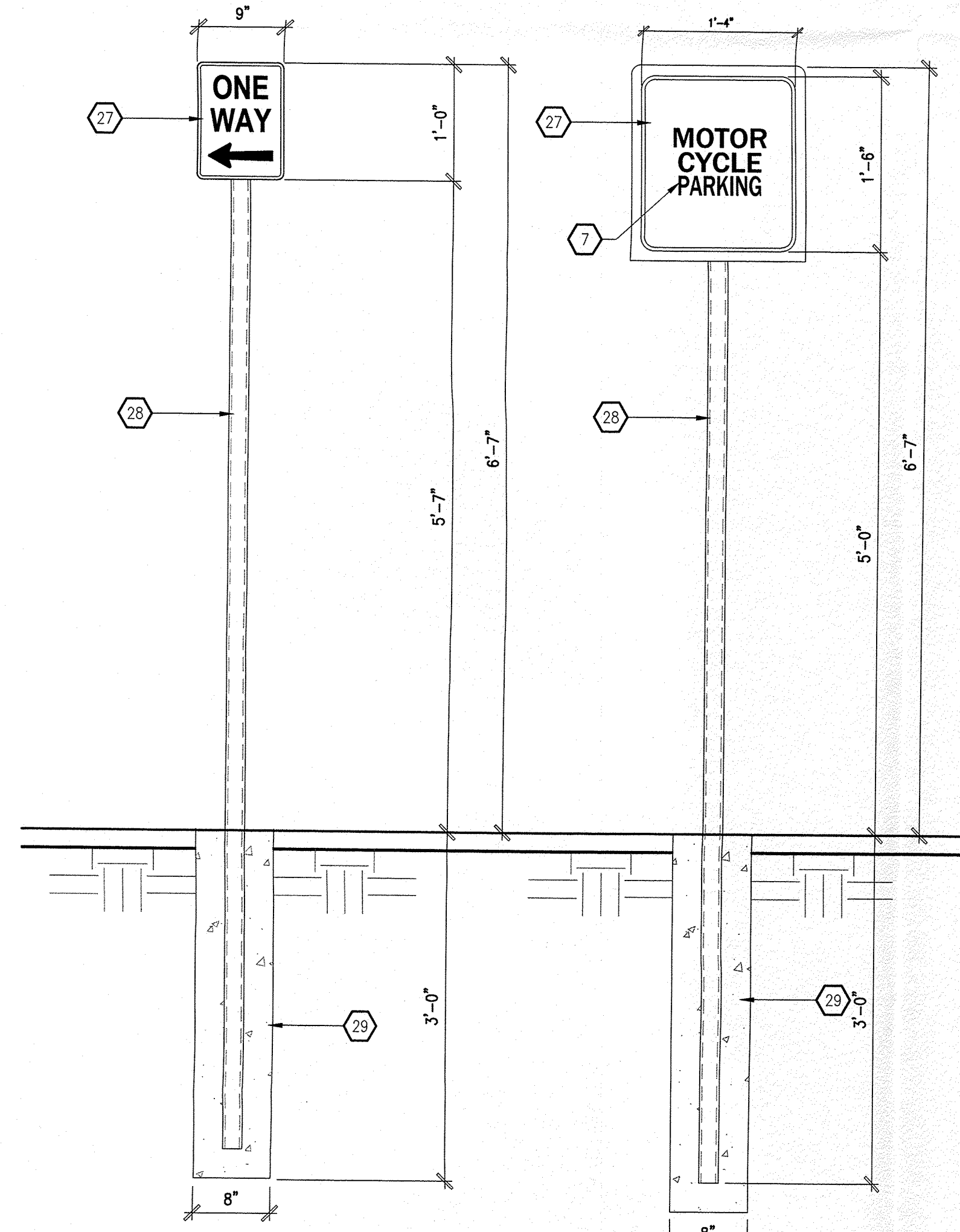
C1 CURB AND GUTTER - SECTION
SCALE: 1" = 1'-0"



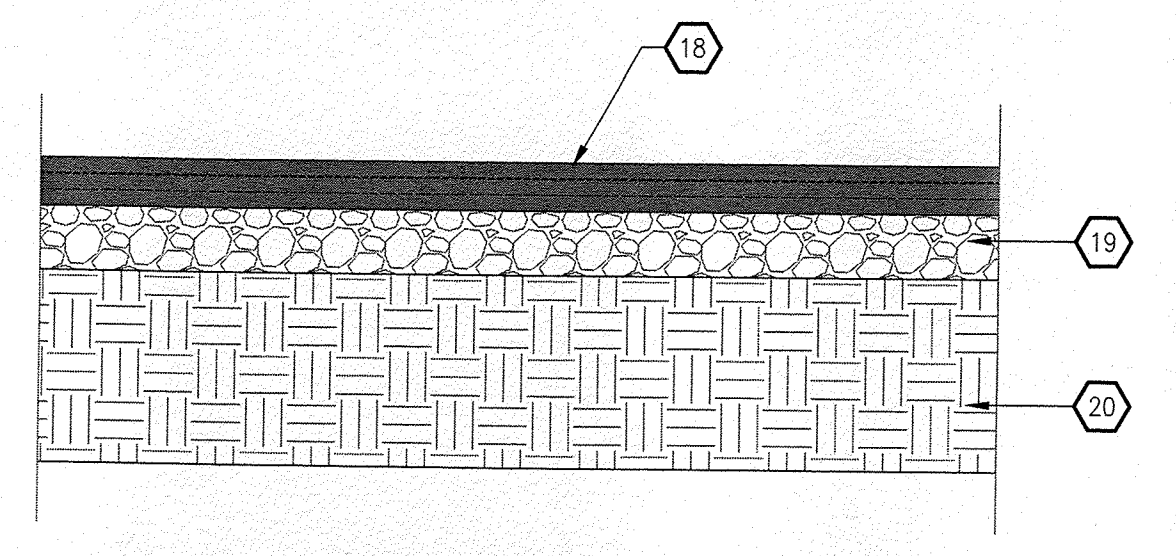
C3 CONCRETE SIDEWALK - SECTION
SCALE: 1" = 1'-0"



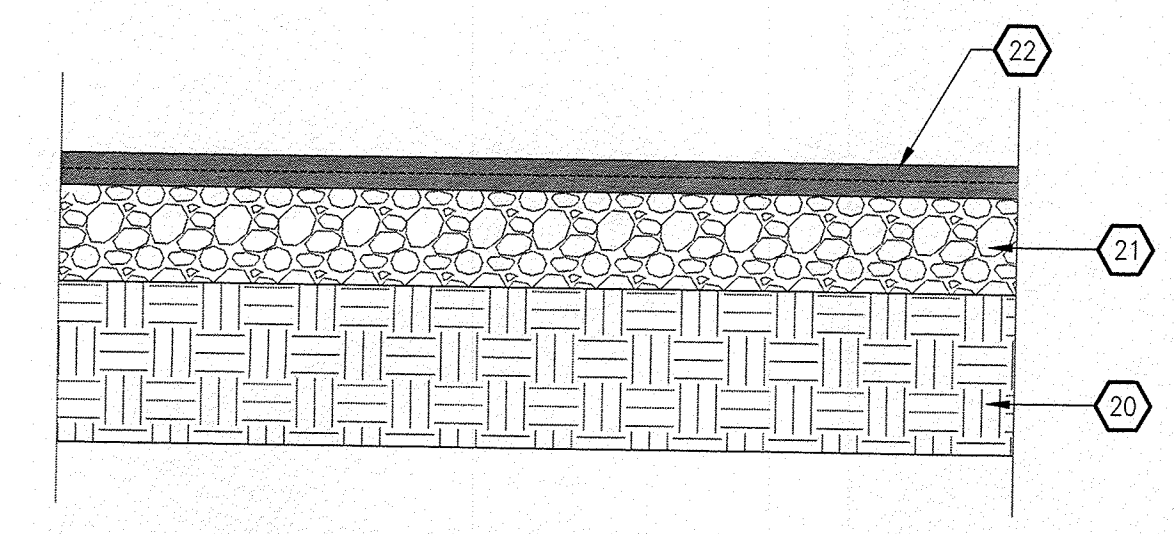
C5 HANDICAP PARKING AISLE - PLAN
SCALE: 1/2" = 1'-0"



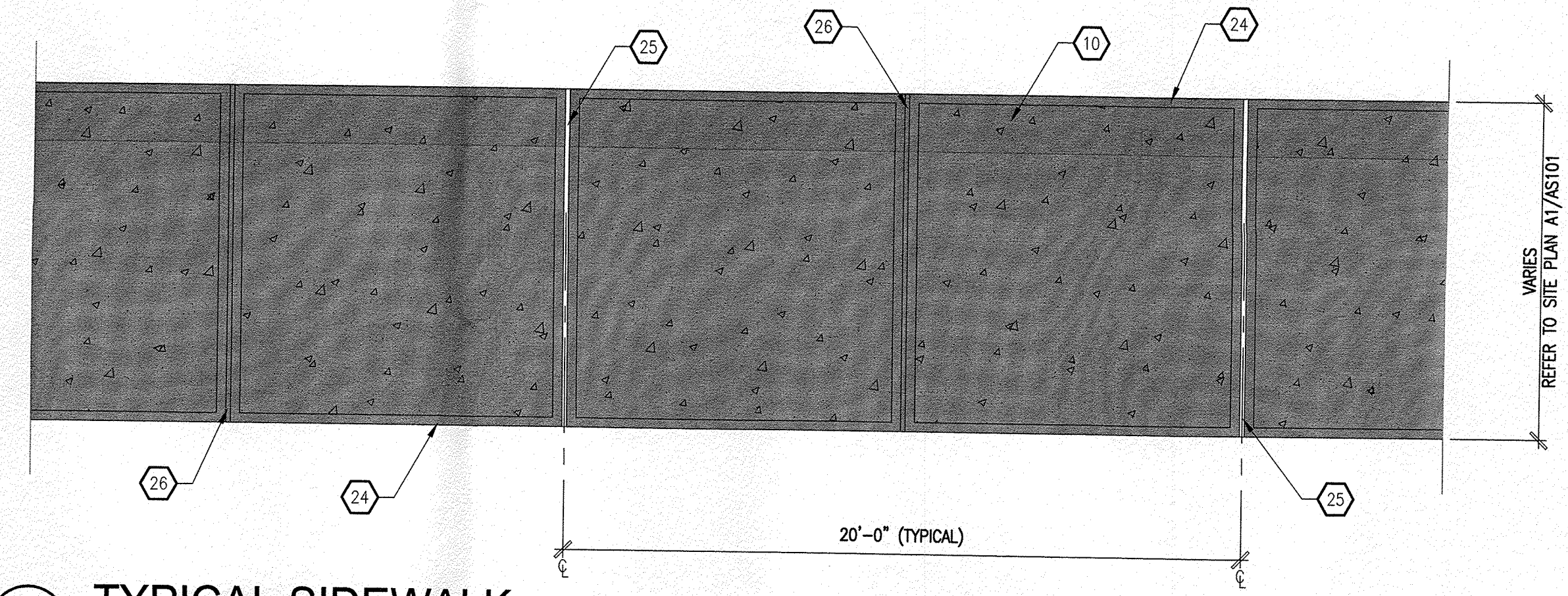
A1 MISC. SIGNAGE SCALE: 1" = 1'-0"
A2 MISC. SIGNAGE SCALE: 1" = 1'-0"



B3 HEAVY DUTY ASPHALT - SECTION
SCALE: 1" = 1'-0"



B5 LIGHT DUTY ASPHALT - SECTION
SCALE: 1" = 1'-0"



A4 TYPICAL SIDEWALK
SCALE: 1/2" = 1'-0"

GENERAL NOTES

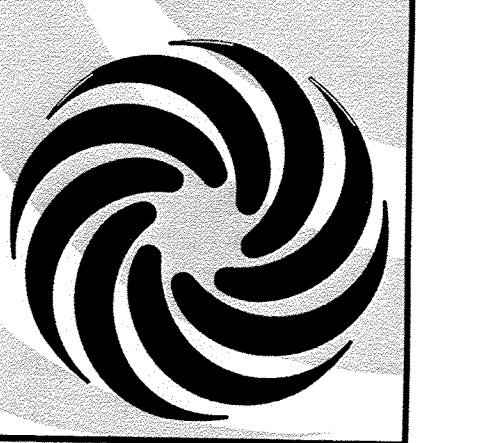
- A. "0" SERIES SHEETS APPLY TO THE ENTIRE SET OF DRAWINGS.
- B. REFER TO SHEET C1.1 FOR GRADING PLAN.
- C. REFER TO SHEET C2.1 FOR DRAINAGE MANAGEMENT PLAN.
- D. REFER TO SHEET C2.1 FOR UTILITY PLAN.
- E. INDICATED DIMENSIONS ARE TO FACE OF FINISH, UNLESS OTHERWISE NOTED.
- F. PARKING AND ACCESSIBLE PAVEMENT MARKING AND STRIPING SHALL CONFORM TO THE NEW MEXICO COMMERCIAL BUILDING CODE SECTION 1110.3 #7.2.

KEYED NOTES

- 1. TAPERED ADA RAMP: REFER TO D2/AS102 FOR ADDITIONAL INFORMATION.
- 2. WALK PATH MARKING: REFER TO C3/AS104 FOR ADDITIONAL INFORMATION.
- 3. ACCESSIBLE MARKING: REFER TO C5/AS104 FOR ADDITIONAL INFORMATION.
- 4. TRUNCATED DOME-TYPE SURFACE APPLIED TILE: 2'-0" W.
- 5. 4" WIDE PARKING STRIPING.
- 6. HANDICAP SIGNAGE: REFER TO A1/AS104 FOR ADDITIONAL INFORMATION.
- 7. "MOTOR CYCLE PARKING" SIGN WHERE INDICATED ON PLANS.
- 8. 1/2" WIDE TOOLED JOINT WITH 1/4" RADIUS ON EXPOSED EDGES @ 6'-0" OC MAXIMUM.
- 9. 1/2" EXPANSION JOINT MATERIAL WITH 1/4" RADIUS ON EXPOSED EDGES @ 20'-0" OC MAXIMUM.
- 10. CAST-IN-PLACE (CIP) CONCRETE WALKWAY.
- 11. FACE OF BUILDING.
- 12. CONCRETE EXPANSION JOINT: REFER TO D2/AS103 FOR ADDITIONAL INFORMATION.
- 13. CONCRETE CURB AND GUTTER: REFER TO C1/AS103 FOR ADDITIONAL INFORMATION.
- 14. PAVEMENT: REFER TO A1/AS101 FOR ADDITIONAL INFORMATION.
- 15. STRUCTURAL FOUNDATION SYSTEM: REFER TO SHEET S101 FOR ADDITIONAL INFORMATION.
- 16. SUBGRADE.
- 17. CAST-IN-PLACE (CIP) CONCRETE CURB.
- 18. 3" ASPHALT CONCRETE PAVEMENT.
- 19. 4" BASE COURSE.
- 20. 10" COMPACTED SUBGRADE.
- 21. 6" BASE COURSE.
- 22. 2" ASPHALT CONCRETE PAVEMENT.
- 23. PORTION OF CONCRETE CURB TO RECEIVE PAINT FINISH: SAFETY YELLOW IN COLOR.
- 24. SMOOTH TOOLED FINISH.
- 25. CONCRETE EXPANSION JOINT: REFER TO D2/AS103 FOR ADDITIONAL INFORMATION.
- 26. CONCRETE CONTROL JOINT: REFER TO D3/AS103 FOR ADDITIONAL INFORMATION.
- 27. 1/2" STEEL PLATE WITH CONTINUOUS WELD ALONG INTERSECTION OF PIPE POST AND PLATE.
- 28. 2" OD GALVANIZED STEEL SIGN POST.
- 29. 3,500 PSI CONCRETE FOUNDATION.
- 30. RE-COMPACTED SUBGRADE.
- 31. "NO PARKING" PAVEMENT MARKING: LETTERS SHALL BE 12" IN HEIGHT AND 2" WIDE PLACED AT REAR OF ACCESS AISLE SO AS TO BE CLOSE TO WHERE AN ADJACENT VEHICLE REAR TIRES WOULD BE PLACED.

REV	DATE	BY	REVISION
1			
2			
3			
4			
5			
6			
7			
8			
9			
10			
11			
12			
13			
14			
15			
16			
17			
18			
19			
20			
21			
22			
23			
24			
25			
26			
27			
28			
29			
30			
31			

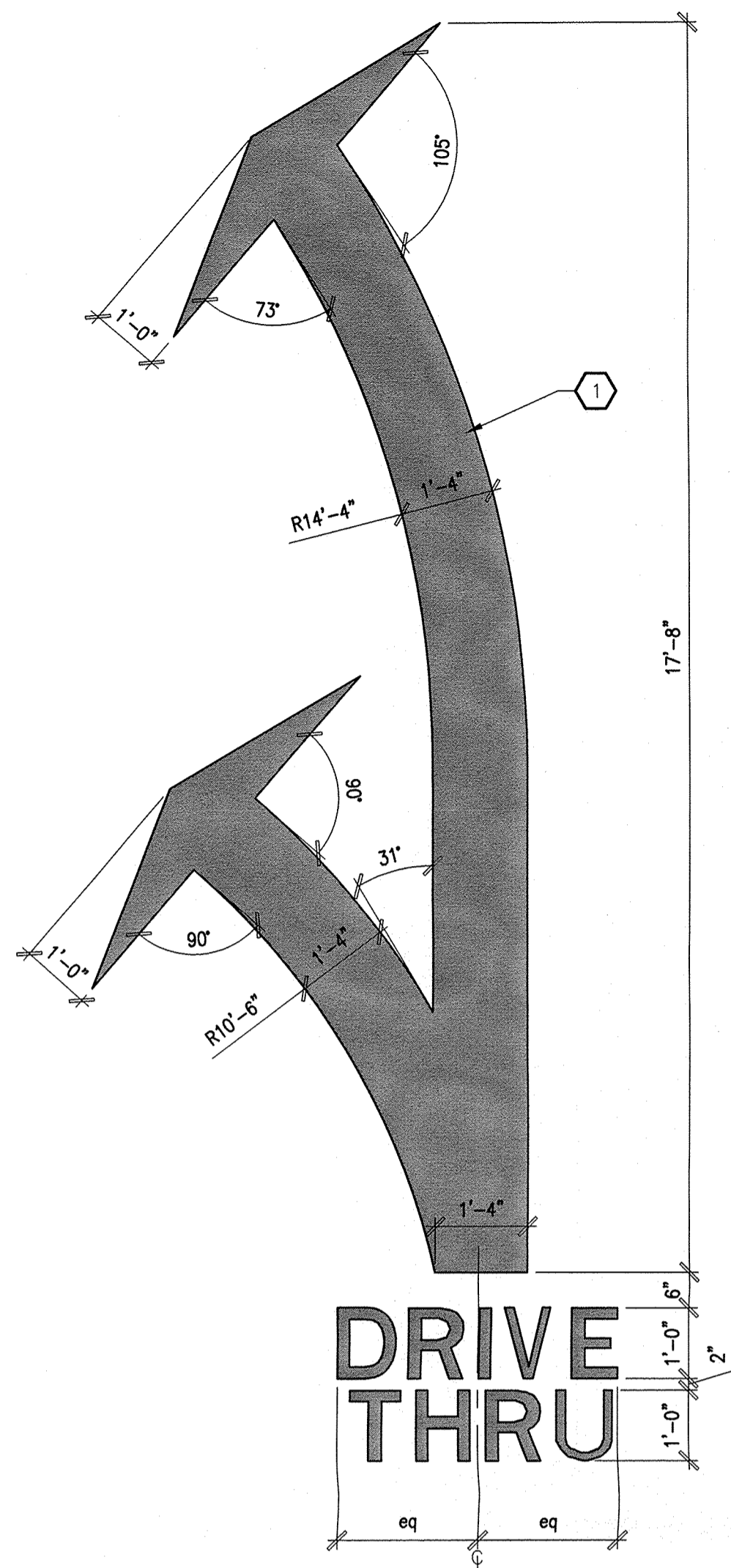
MODULUS ARCHITECTS
100 SUN AVENUE N.E., Ste 305
ALBUQUERQUE, NEW MEXICO 87109
PHONE (505) 338-1499 FAX (505) 338-1498



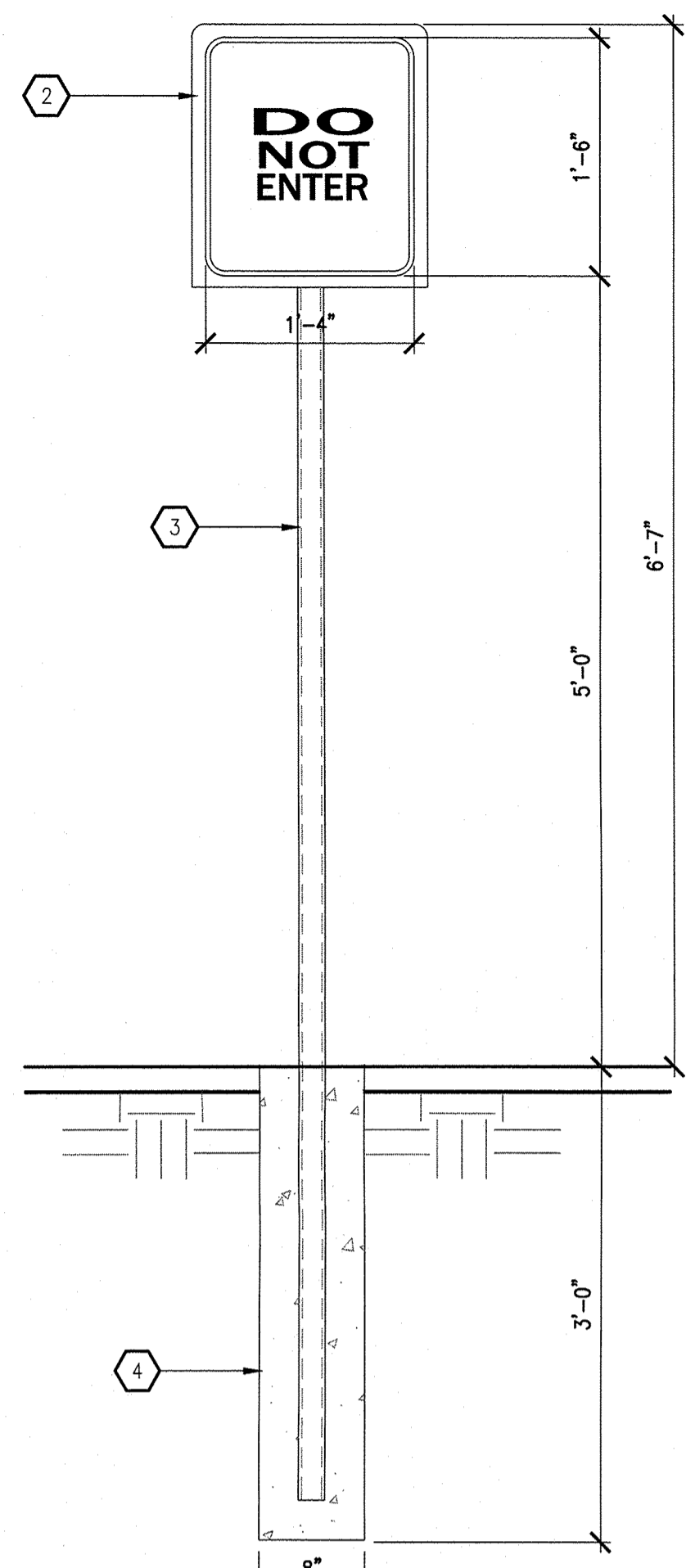
STATE OF NEW MEXICO
STEPHEN A. DUNBAR
No. 4218
REGISTERED ARCHITECT
03/10/2017

PROJECT TITLE: BLAKE'S LOTABURGER #6
1640 GIBSON BLVD. SE
ALBUQUERQUE, NEW MEXICO 87105
PROJECT MANAGER: DEVIN NGUYEN
JOB NO.: Blks #6
DRAWN BY: DEVIN NGUYEN
SHEET TITLE: SITE DETAILS

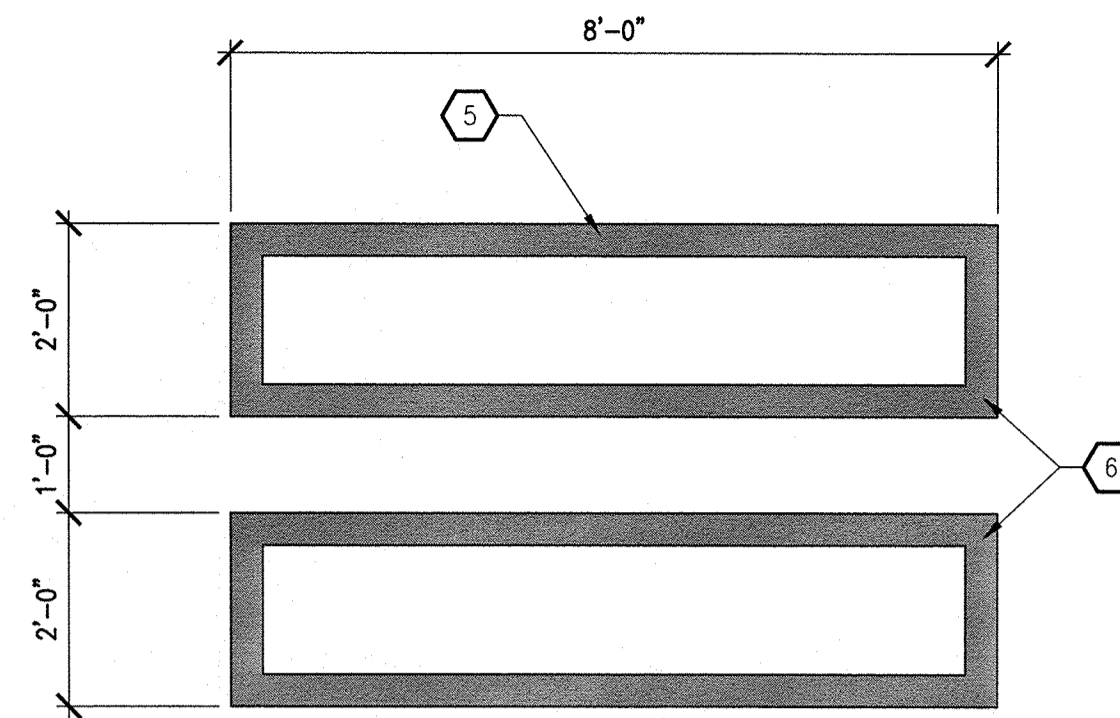
DATE: 03.10.2017
SCALE: AS NOTED
SHEET: AS103



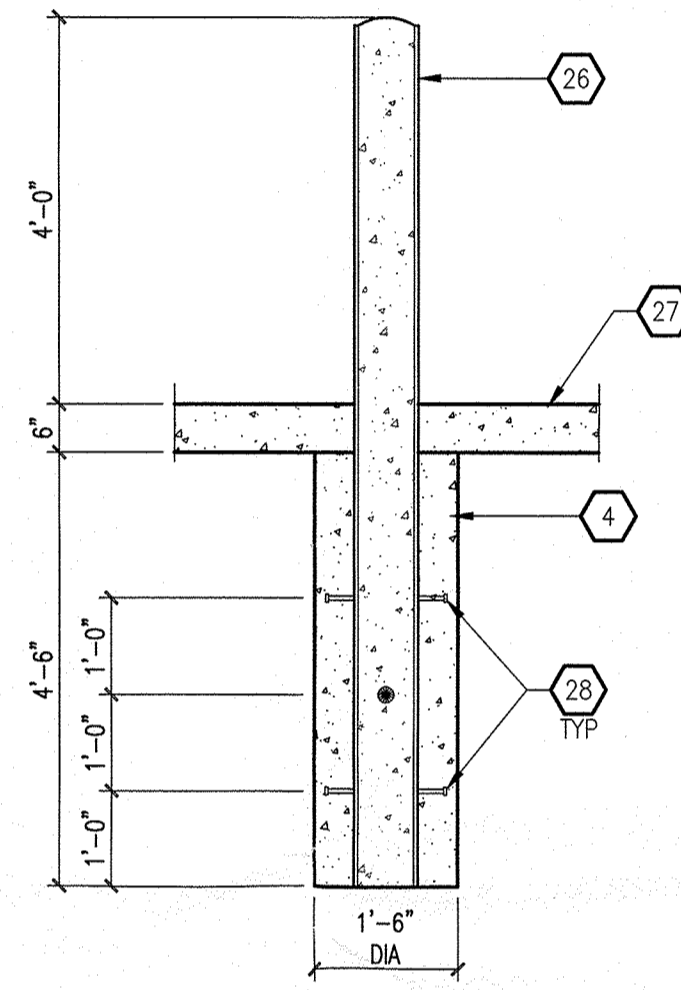
B1 PAVEMENT DIRECTION MARKING
SCALE: 1/2" = 1'-0"



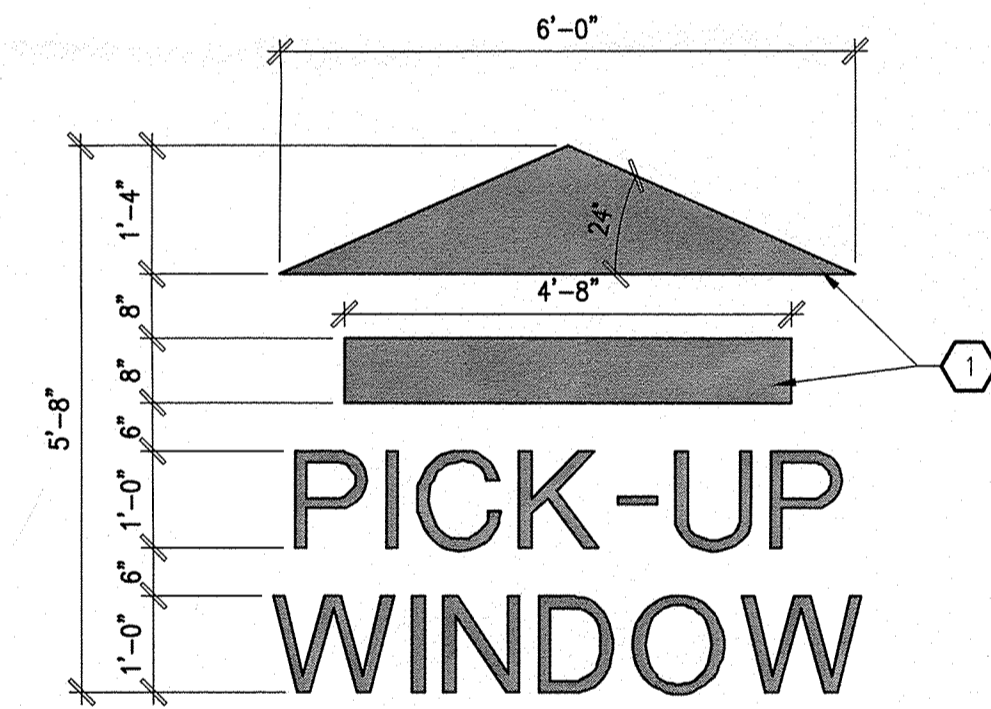
C2 "DO NOT ENTER" SIGNAGE
SCALE: 1" = 1'-0"



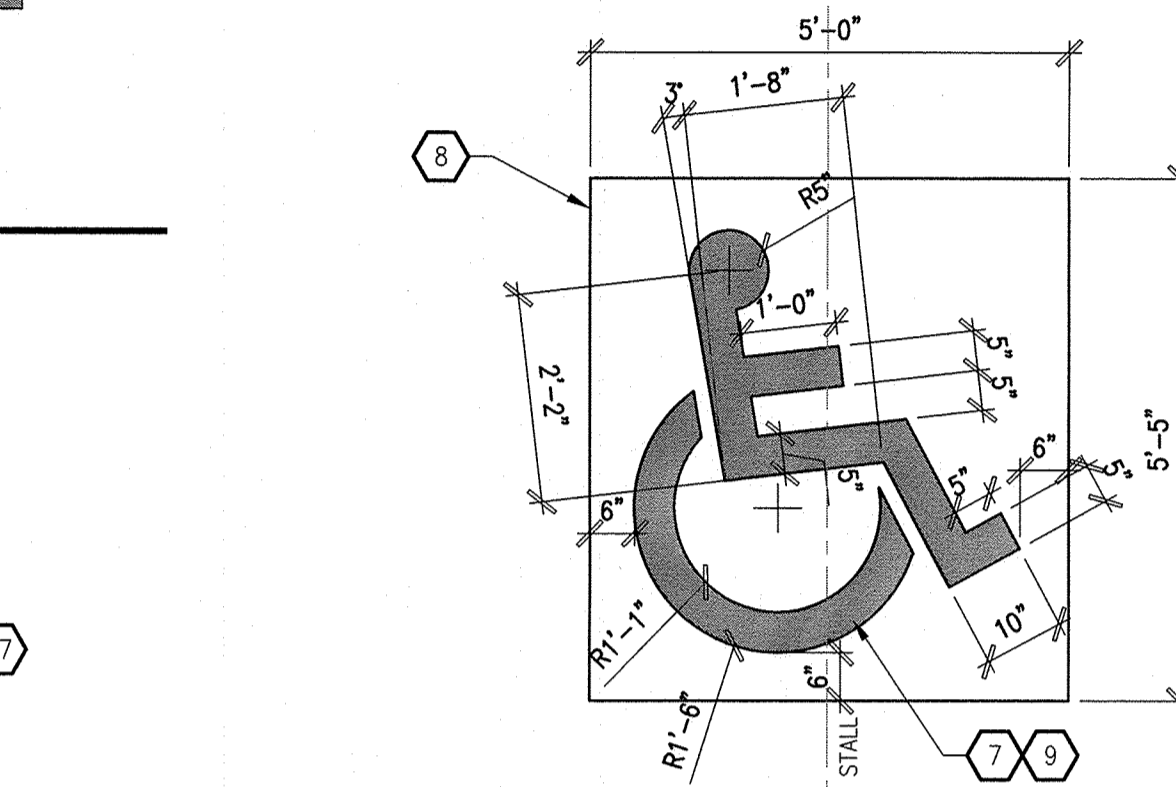
C3 WALK PATH MARKING
SCALE: 1/2" = 1'-0"



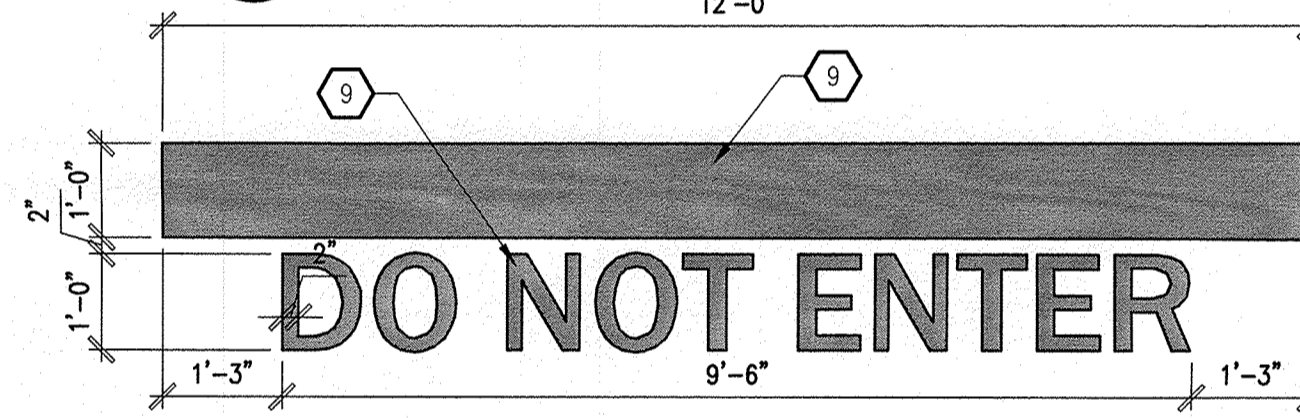
B4 BOLLARD - SECTION
SCALE: 1/2" = 1'-0"



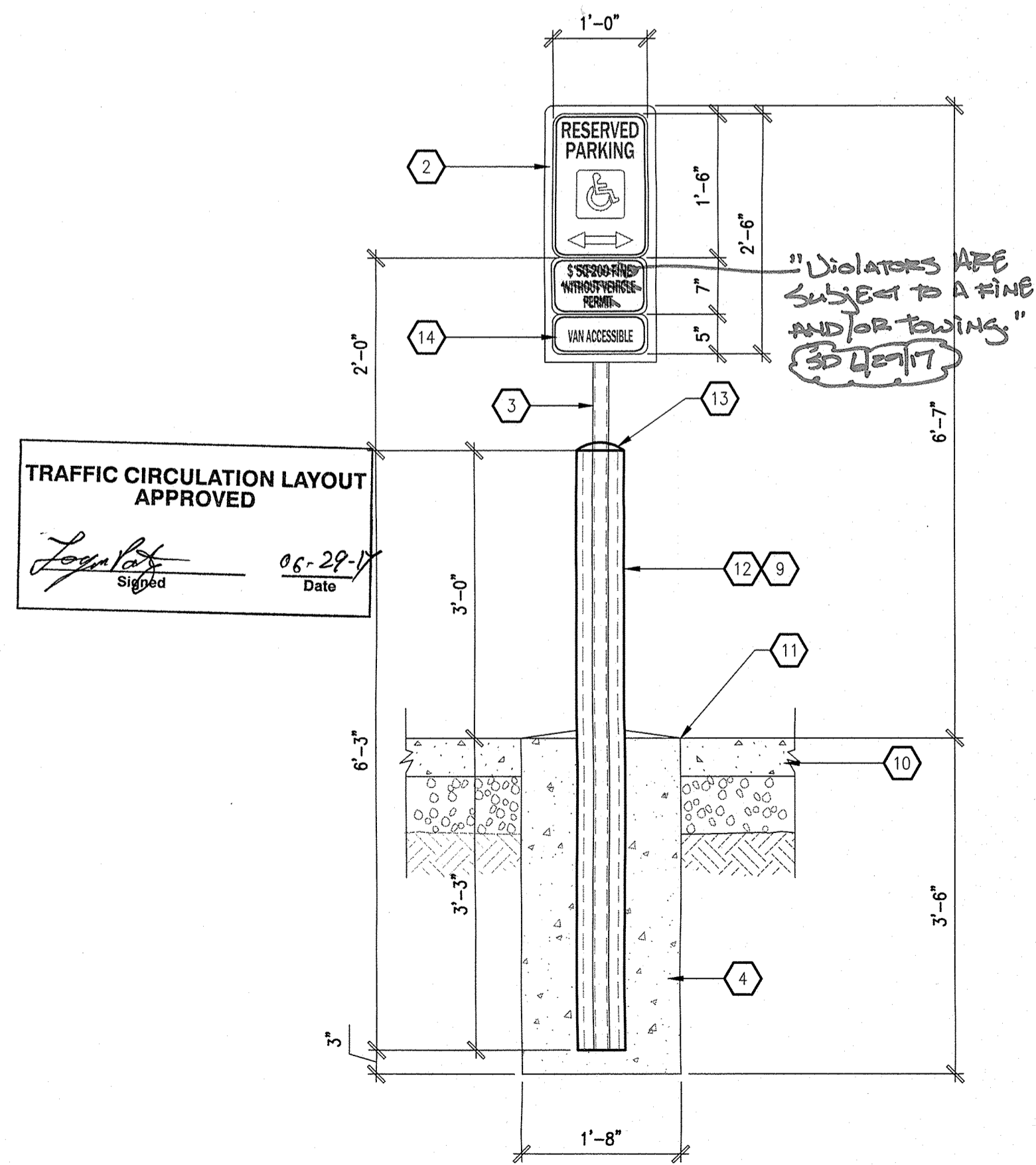
B2 PAVEMENT DIRECTION MARKING
SCALE: 1/2" = 1'-0"



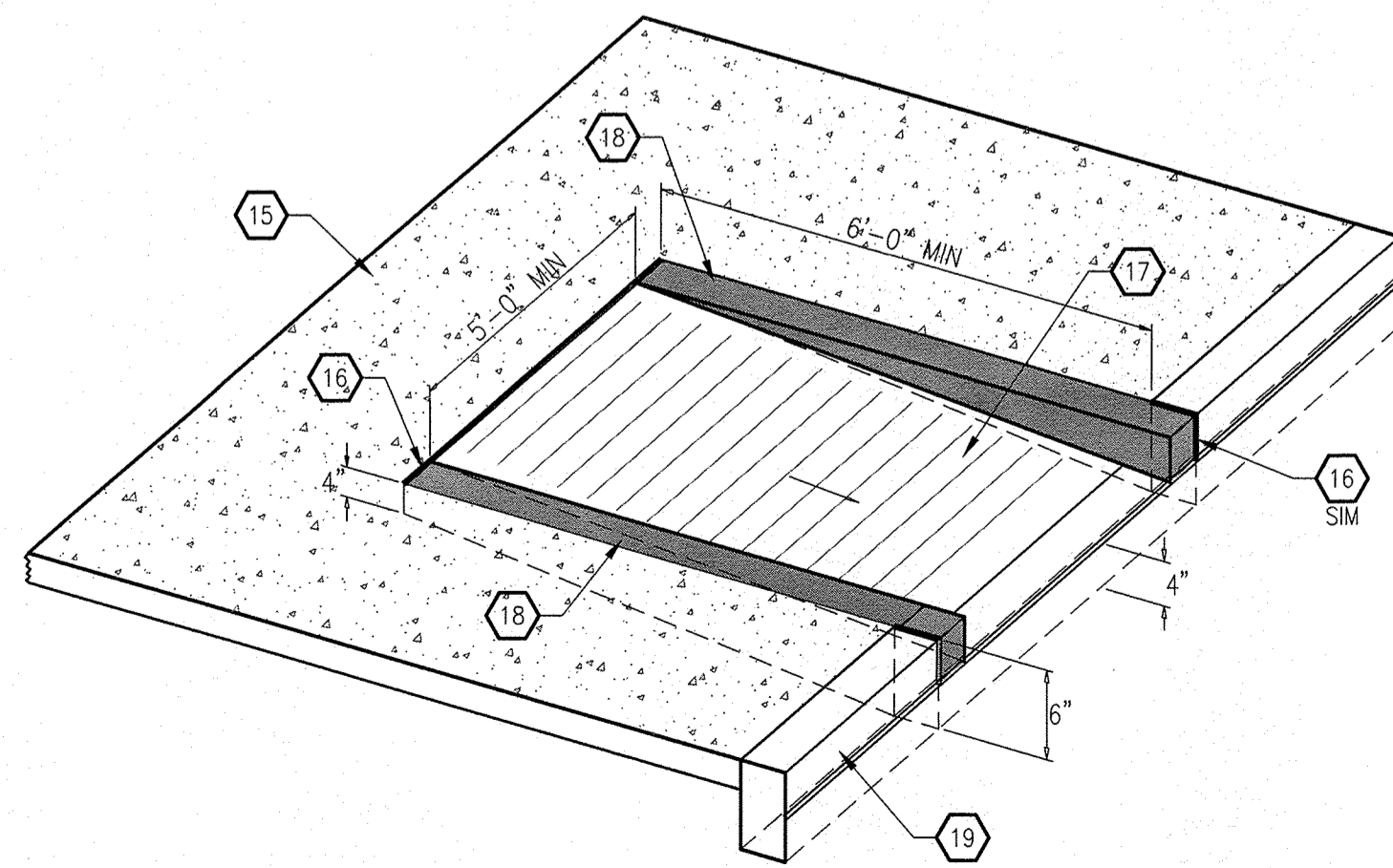
C5 ACCESS. MARKING
SCALE: 1/2" = 1'-0"



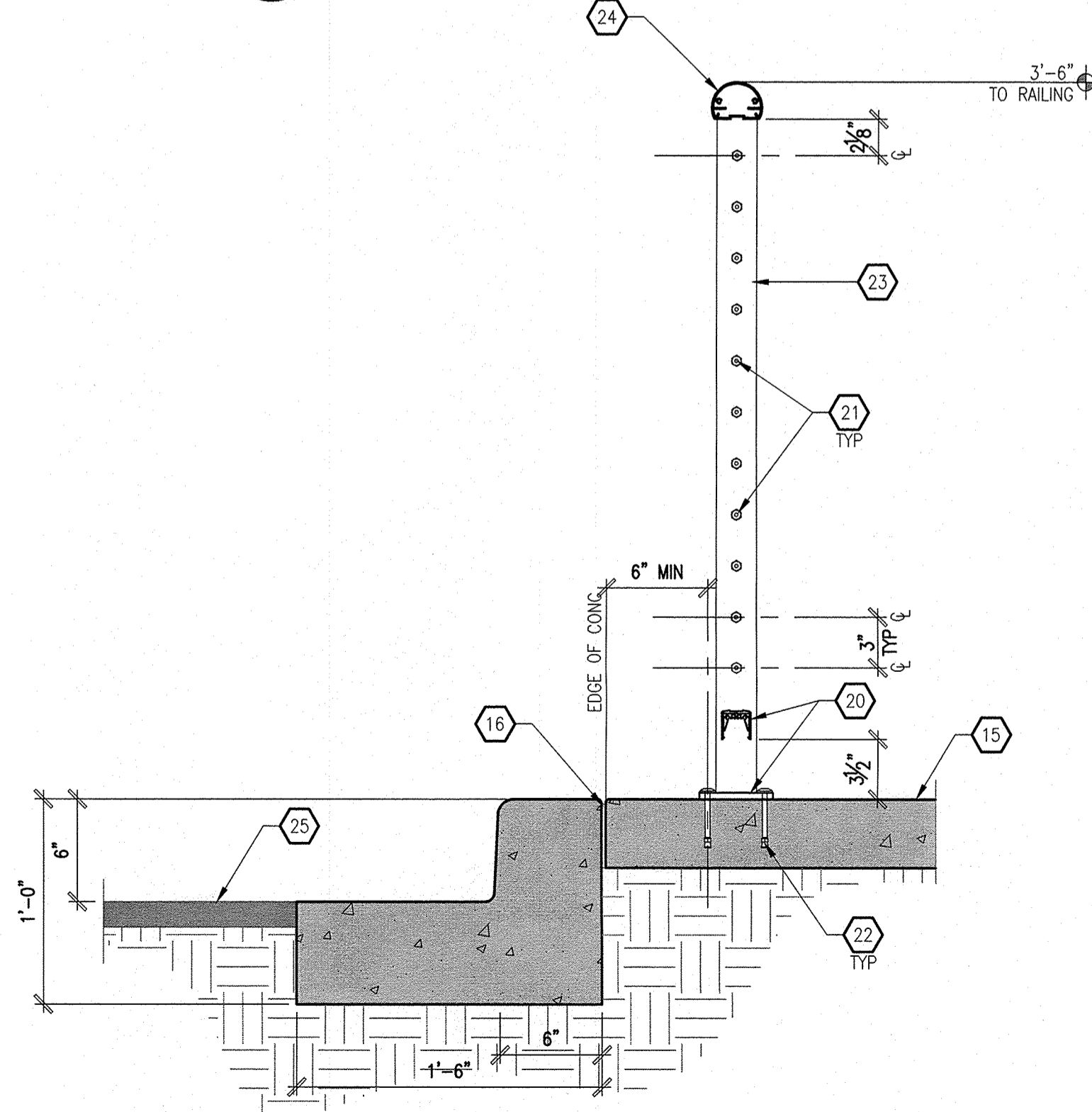
B5 "DO NOT ENTER" MARKING
SCALE: 1/2" = 1'-0"



A1 HANDICAP SIGNAGE
SCALE: 3/4" = 1'-0"



A2 SIDEWALK ACCESSIBLE RAMP
SCALE: NTS



A5 CABLE RAILING - SECTION
SCALE: 1-1/2" = 1'-0"

GENERAL NOTES

- A. "G" SERIES SHEETS APPLY TO THE ENTIRE SET OF DRAWINGS.
- B. REFER TO SHEET C1.1 FOR ENGINEERING SITE PLAN.
- C. REFER TO SHEET C1.2 FOR GRADING PLAN.
- D. REFER TO SHEET C1.3 FOR UTILITY PLAN.
- E. INDICATED DIMENSIONS ARE TO FACE OF FINISH, UNLESS OTHERWISE NOTED.
- F. REFER TO PAVEMENT SITE PLAN ON SHEET AS105 FOR SITE DIMENSIONS.
- G. PARKING AND ACCESSIBLE PAVEMENT MARKING AND STRIPING SHALL CONFORM TO THE NEW MEXICO COMMERCIAL BUILDING CODE SECTION 1110.3 #7.2.

KEYED NOTES

1. PAVEMENT DIRECTIONAL MARKING (COLOR: TRAFFIC YELLOW).
2. 3/8" STEEL PLATE WITH CONTINUOUS WELD ALONG INTERSECTION OF PIPE POST AND PLATE.
3. 2" OD GALVANIZED STEEL SIGN POST.
4. 3,500 PSI CONCRETE FOUNDATION.
5. 5'-0" STRIPING AT NON-VAN ACCESSIBLE PARKING LOCATIONS.
6. 4" THICK PAINTED STRIPING (COLOR: TRAFFIC YELLOW).
7. HANDICAP PAVEMENT MARKING: REFER TO GENERAL NOTE "F" ABOVE FOR ADDITIONAL INFORMATION.
8. PAVEMENT MARKING: BLUE PAINT FINISH.
9. PAVEMENT MARKING: SAFETY YELLOW PAINT FINISH.
10. FINISHED SURFACE.
11. BITUMINOUS JOINT FILLER (CONCRETE PAVEMENT ONLY).
12. 6" OD STEEL PIPE, FILLED WITH CONCRETE.
13. CROWN CONCRETE TOP.
14. "VAN ACCESSIBLE" SIGN WHERE INDICATED ON SITE PLAN.
15. CONCRETE SIDEWALK - REFER TO A4/AS105 FOR ADDITIONAL INFORMATION.
16. EXPANSION JOINT: REFER TO D2/AS105 FOR ADDITIONAL INFORMATION.
17. MONOLITHIC CONCRETE ADA COMPLIANT RAMP: SMOOTH TEXTURE FINISH WITH 1/4" x 1/4" GROOVE 2" OC, INTEGRALLY COLORED DAVIS COLORS 160 "BRICK RED", 4,000 PSI.
18. PORTION OF CONCRETE CURB TO RECEIVE PAINT FINISH: SAFETY YELLOW IN COLOR.
19. STAND UP CURB AND GUTTER: REFER TO C1/AS105 FOR ADDITIONAL INFORMATION.
20. STEEL STANCHION AND BASE PLATE: HANSEN ARCHITECTURAL SYSTEM, TRIM-LINE CABLE RAILING SYSTEM OR EQUAL.
21. CABLE RAILING.
22. 3/8" STAINLESS STEEL WEDGE ANCHOR.
23. ALUMINUM POST: HANSEN ARCHITECTURAL SYSTEM, TRIM-LINE CABLE RAILING SYSTEM OR EQUAL.
24. ALUMINUM TOP RAIL: HANSEN ARCHITECTURAL SYSTEM #300X TOP RAIL OR EQUAL.
25. PAVEMENT: REFER TO B3/AS105 AND B5/AS105 FOR ADDITIONAL INFORMATION.
26. 6" DIAMETER BOLLARD (PAINT FINISH COLOR: TRAFFIC YELLOW).
27. CONCRETE PAD: REFER TO A3/AS103 FOR ADDITIONAL INFORMATION.
28. STUD ANCHOR.
29. TRUNCATED DOME-TYPE SURFACE APPLIED TILE: 2'-0" x 5'-0" L.
30. PROVIDE 1/4" DEEP x 1/4" WIDE GROOVES 2" OC, EXTEND THE FULL WIDTH AND DEPTH OF THE RAMP.

REV	DATE	BY	REVISION
6			
5			
4			
3			
2			

MODULUS ARCHITECTS
100 SUN AVENUE N.E., Ste 305
ALBUQUERQUE, NEW MEXICO 87109
PHONE (505) 338-1499 FAX (505) 338-1498

STATE OF NEW MEXICO
STEPHEN A. DUNBAR
No. 4218
REGISTERED ARCHITECT
03/10/2017

PROJECT TITLE: BLAKE'S LOTABURGER #6
1640 GIBSON BLVD. SE ALBUQUERQUE, NEW MEXICO 87106
DRAWN BY: DEVIN NGUYEN
JOB NO. Blake's #6
PROJECT MANAGER: DEVIN NGUYEN
SHEET TITLE: SITE DETAILS

DATE: 03.10.2017
SCALE: AS NOTED
sheet: AS104