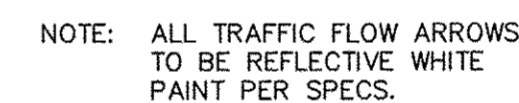
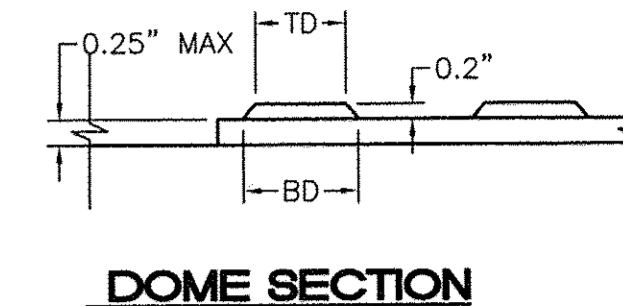
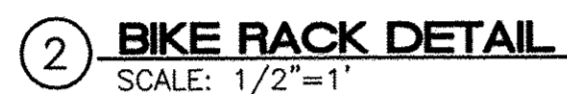
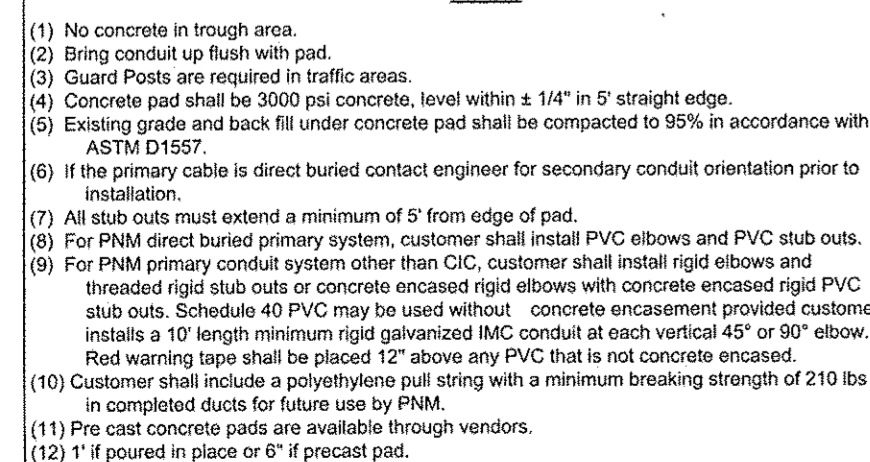


1 HC PARKING DETAIL
NTS

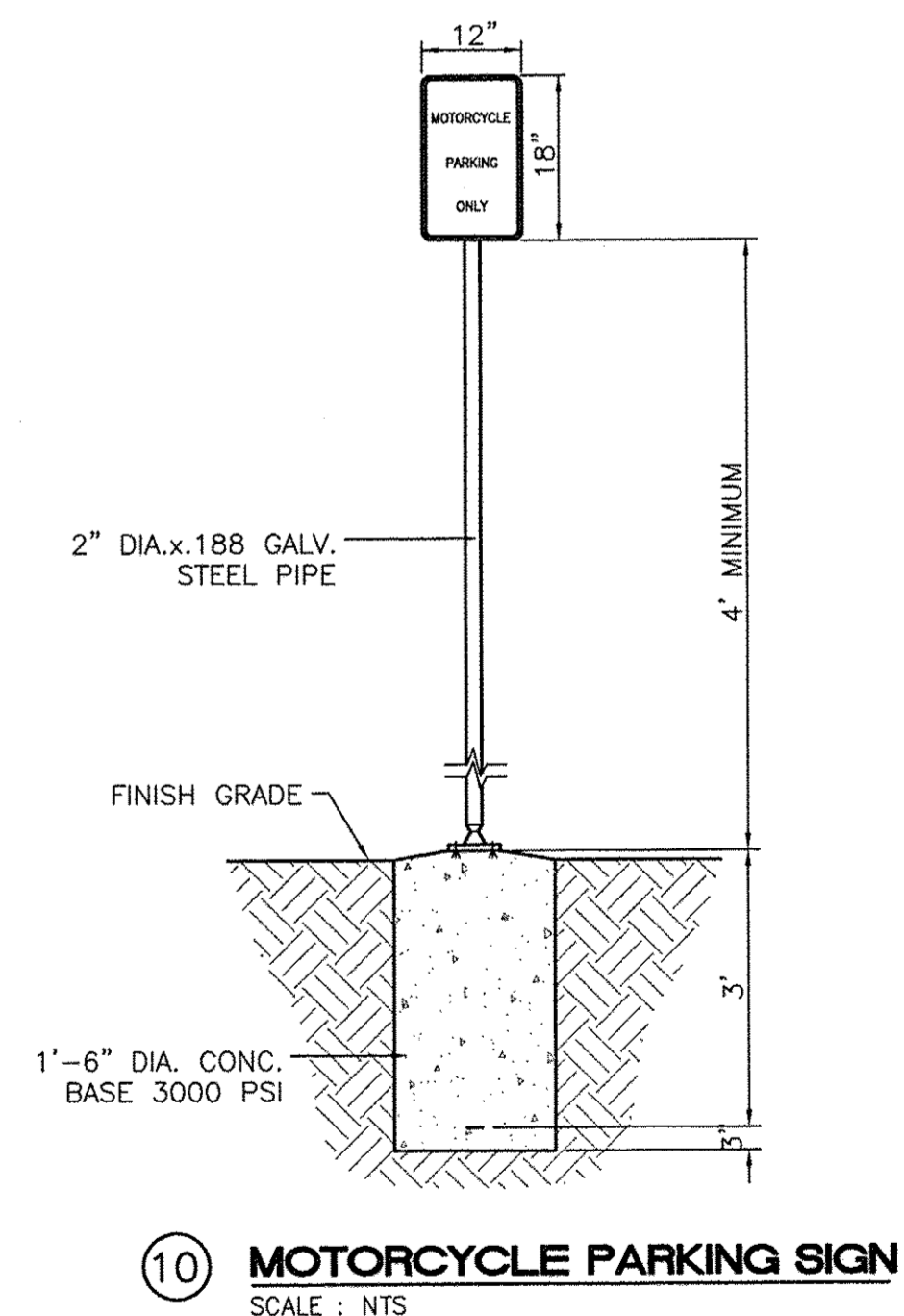
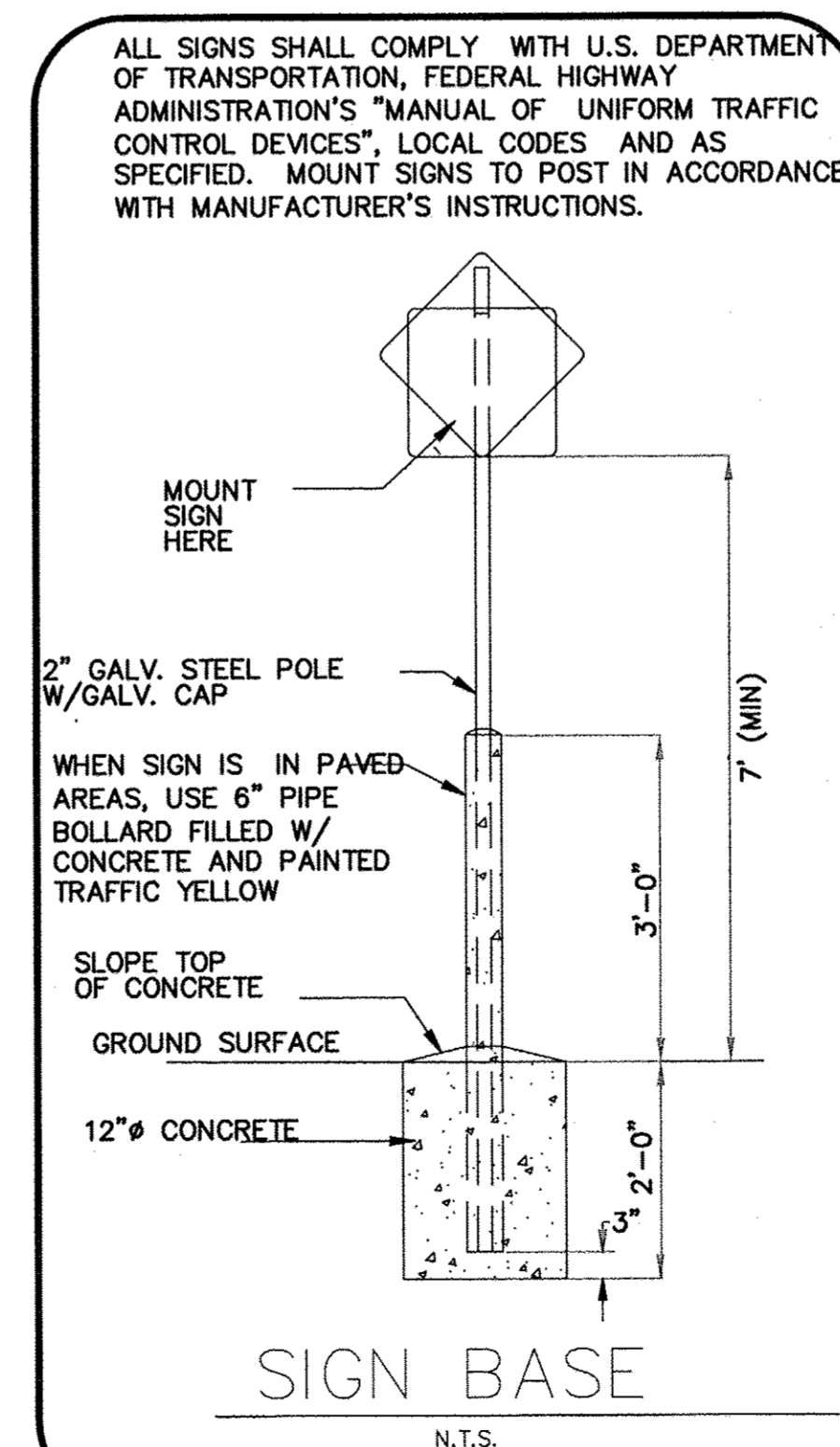
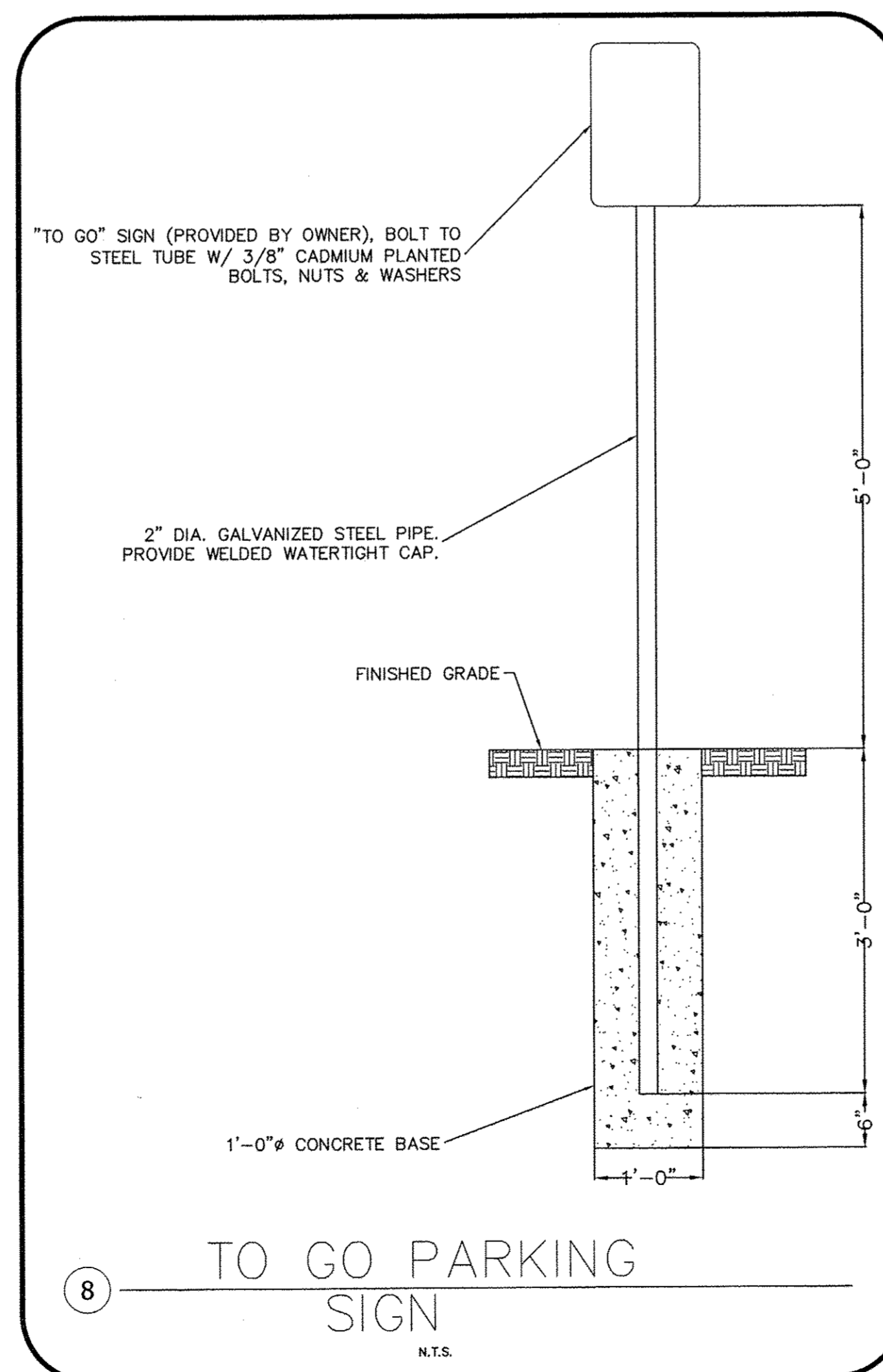


TRAFFIC FLOW ARROW
N.T.S.




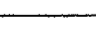
Maximum Number of Secondary Terminal Holes							
Secondary Voltage	Transformer kVA Size						
	75	150	300	500	750	1000	1500
208Y/120	4	6	8	8	8	N/A	N/A
480Y/277	4	6	6	8	8	8	8

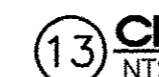
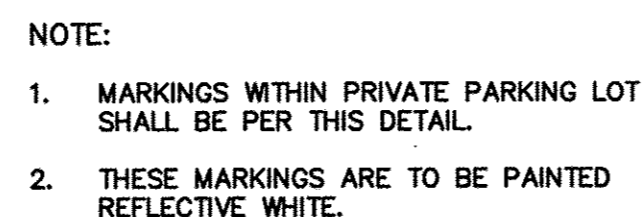
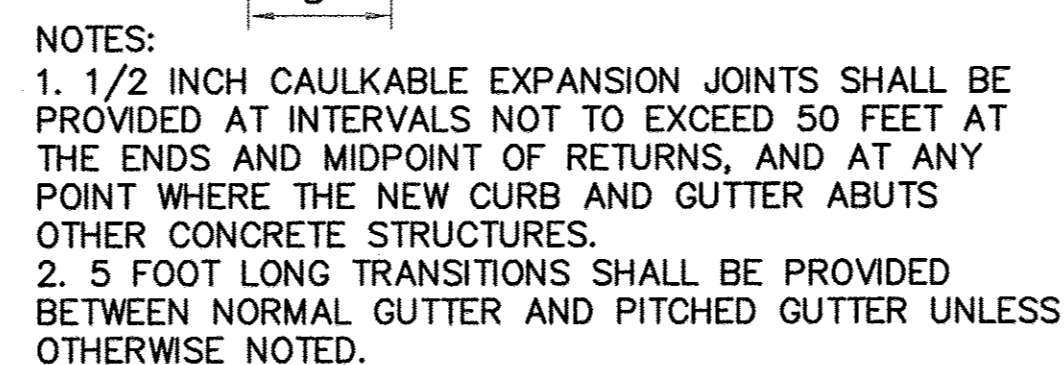
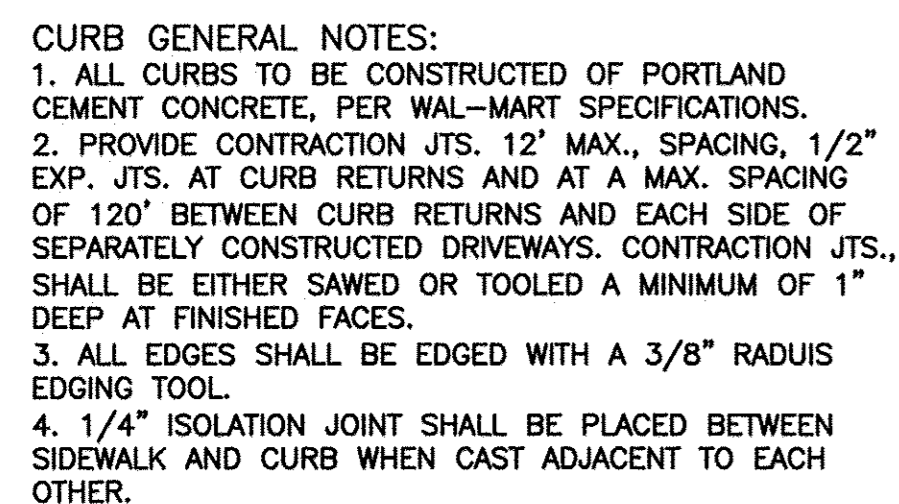
TRANSFORMER PAD DETAIL



10 **MOTORCYCLE PARKING SIGN**
SCALE : NTS

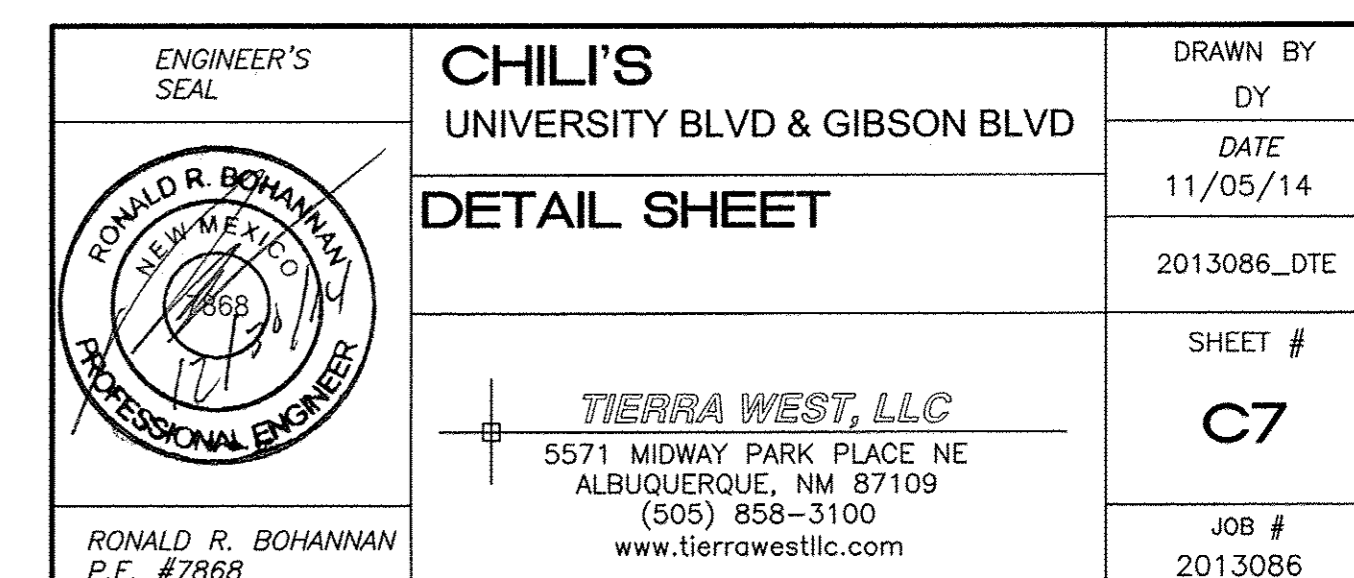
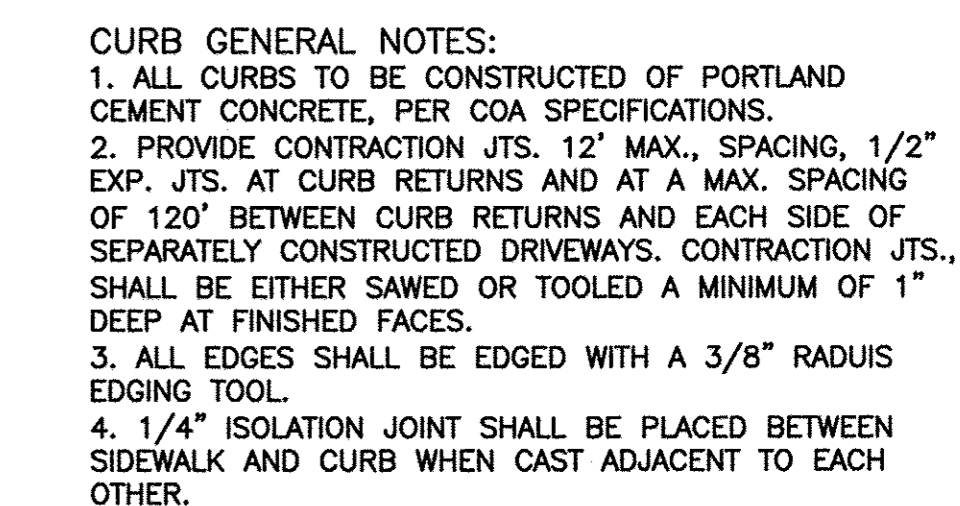
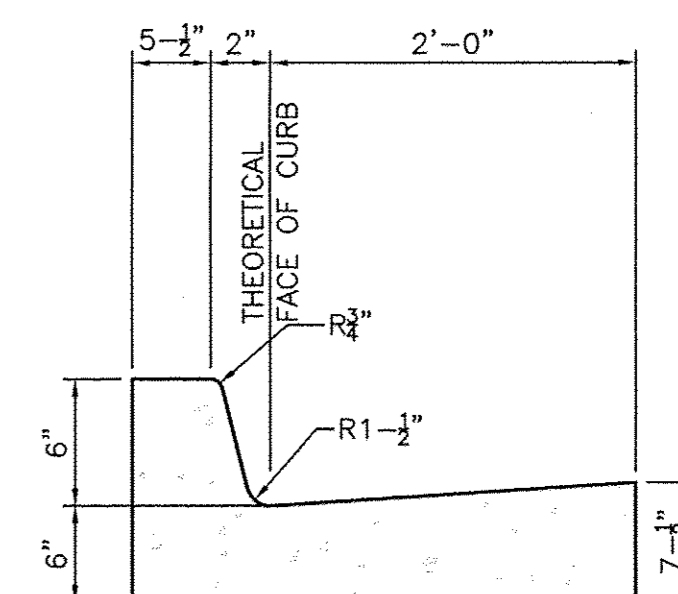
ISSUE FOR PERMIT 9.17.14

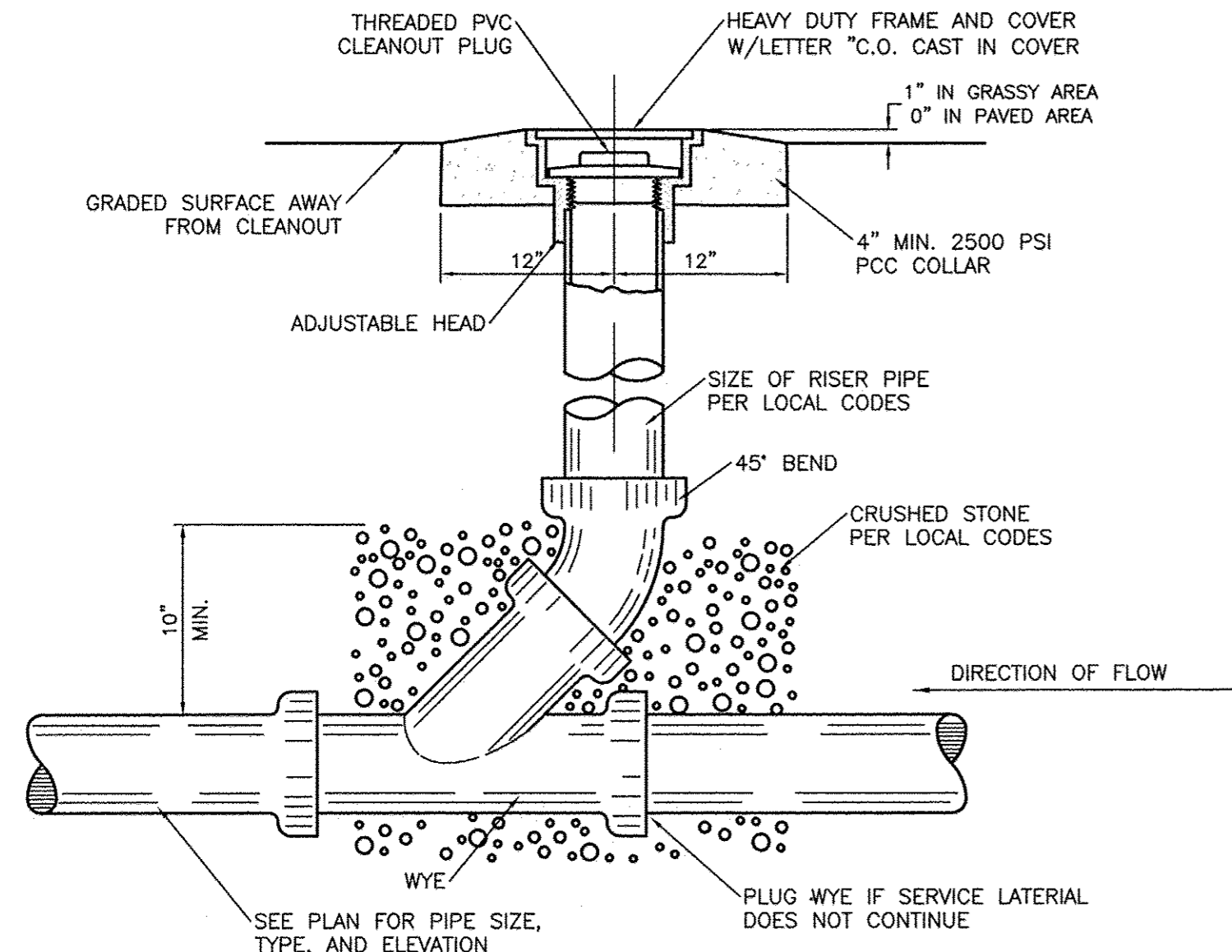
<p>ENGINEER'S SEAL</p>	<p>CHILI'S UNIVERSITY BLVD & GIBSON BLVD</p>	<p>DRAWN BY DY</p>
	<p>DETAIL SHEET</p>	<p>DATE 11/11/14</p>
<p>RONALD R. BOHANNAN P.E. #7868</p>	 <p><i>TIERRA WEST, LLC</i> 5571 MIDWAY PARK PLACE NE ALBUQUERQUE, NM 87109 (505) 858-3100 www.tierrawestllc.com</p>	<p>2013086_DTE</p>
<p>RONALD R. BOHANNAN P.E. #7868</p>	<p>5571 MIDWAY PARK PLACE NE ALBUQUERQUE, NM 87109 (505) 858-3100 www.tierrawestllc.com</p>	<p>SHEET # C6 JOB # 2013086</p>



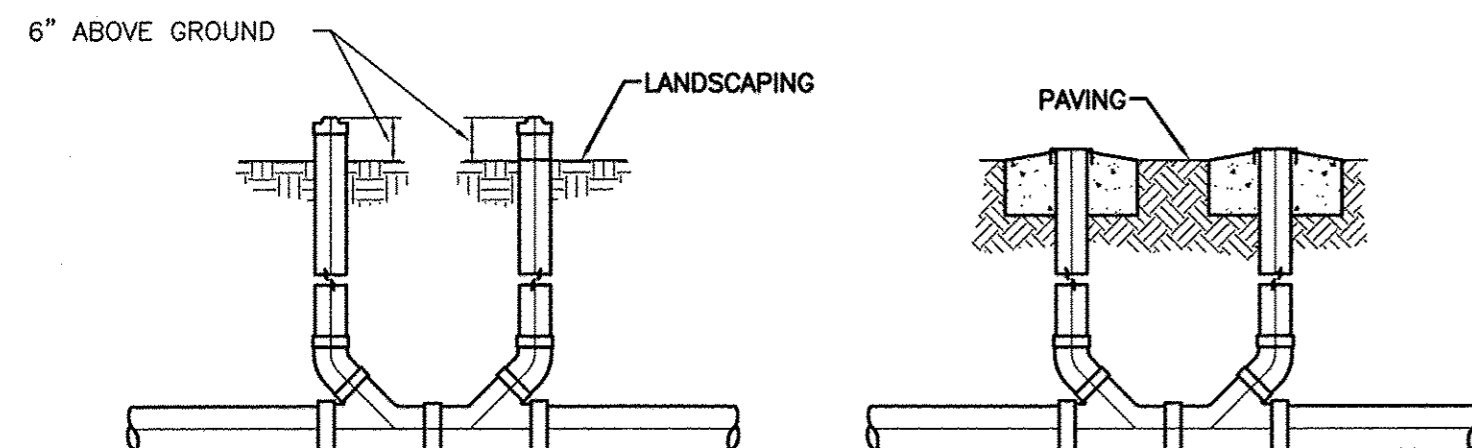
GENERAL NOTES:

1. ALL CONCRETE IS TO BE 4000 PSI @ 28 DAYS.
2. MINIMUM COMPACTION UNDER FOOTINGS IS TO BE 95% PER ASTM. D 1557 FOR A DEPTH OF 12" MOISTURE CONTENT IS TO BE ± 2.0%.
3. BACK FILL AGAINST WALLS IS TO BE HAND-PLACED AND COMPACTED.
4. ALL BARS ARE TO BE GRADE 60, ASTM 615.
5. TRUSS TYPE DUR-O-WALL EVERY OTHER COURSE.
6. DOWELS SHALL BE AT LEAST EQUAL IN SIZE AND SPACING TO V-BARS, SHALL PROJECT A MINIMUM OF 30 BAR DIA. INTO THE FILLED BLOCK CORES, AND SHALL EXTEND TO THE TOP OF THE FOOTING.
7. PROVIDE KEY FOR 12" AND 12" WALLS WHERE H EXCEEDS 6'-0"
8. USE EITHER EXPANSION JOINTS ON 20' CENTERS OR PILASTERS EVERY 16'.
9. BOND BEAM, 1-#4 BARS FOR WALLS UNDER 3'-4", 2-#4 BARS FOR WALLS UNDER 5'-4", 2-#5 BARS FOR WALLS OVER 5'-4".

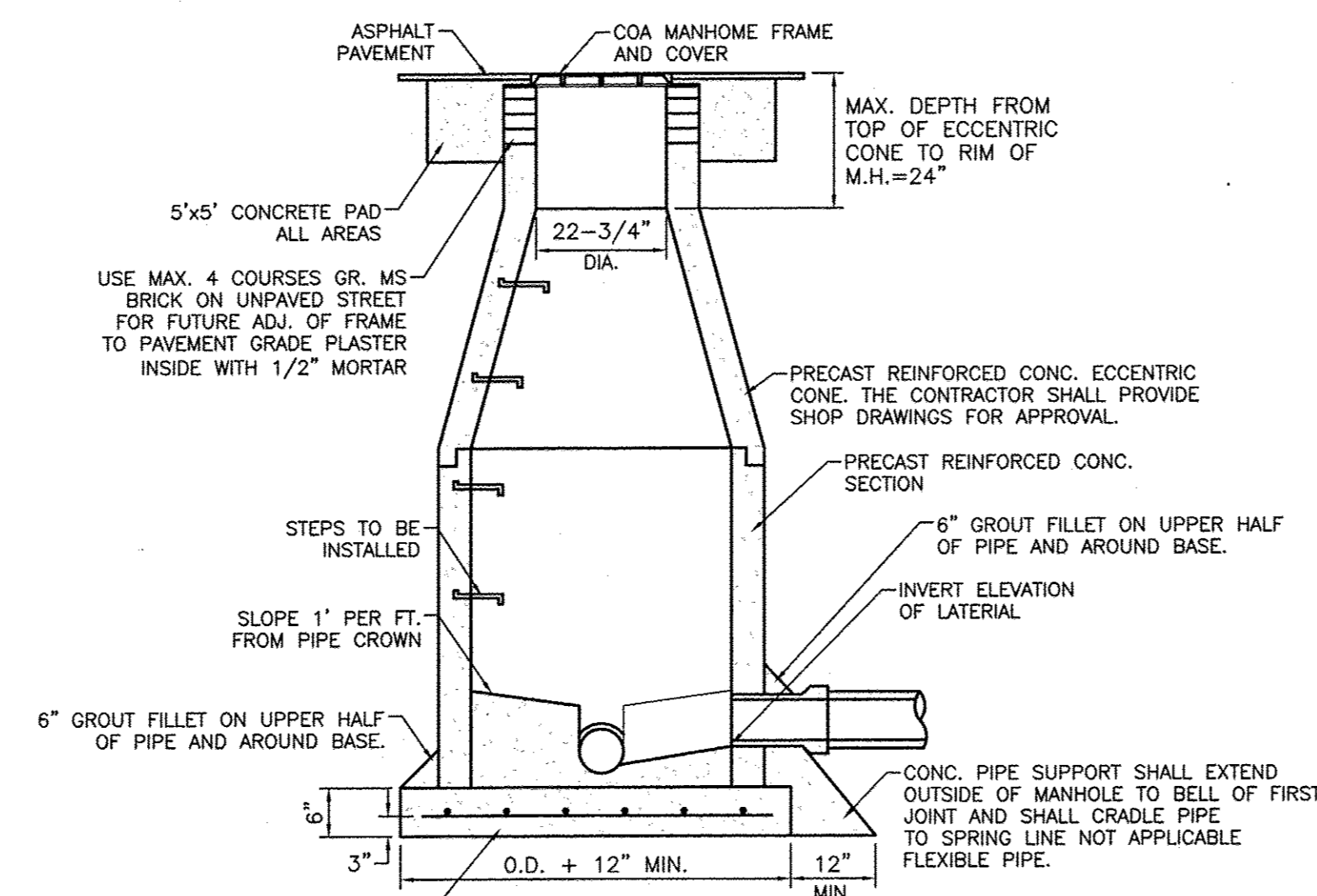
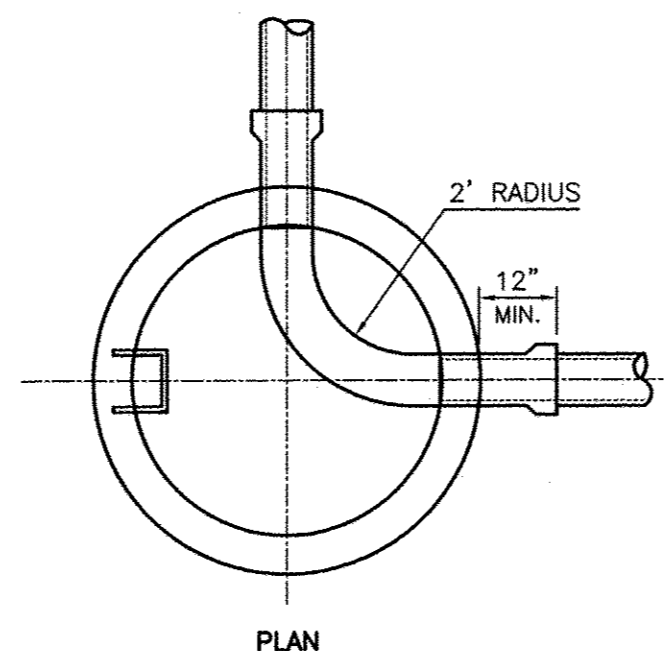




SANITARY SEWER CLEAN-OUT
NTS

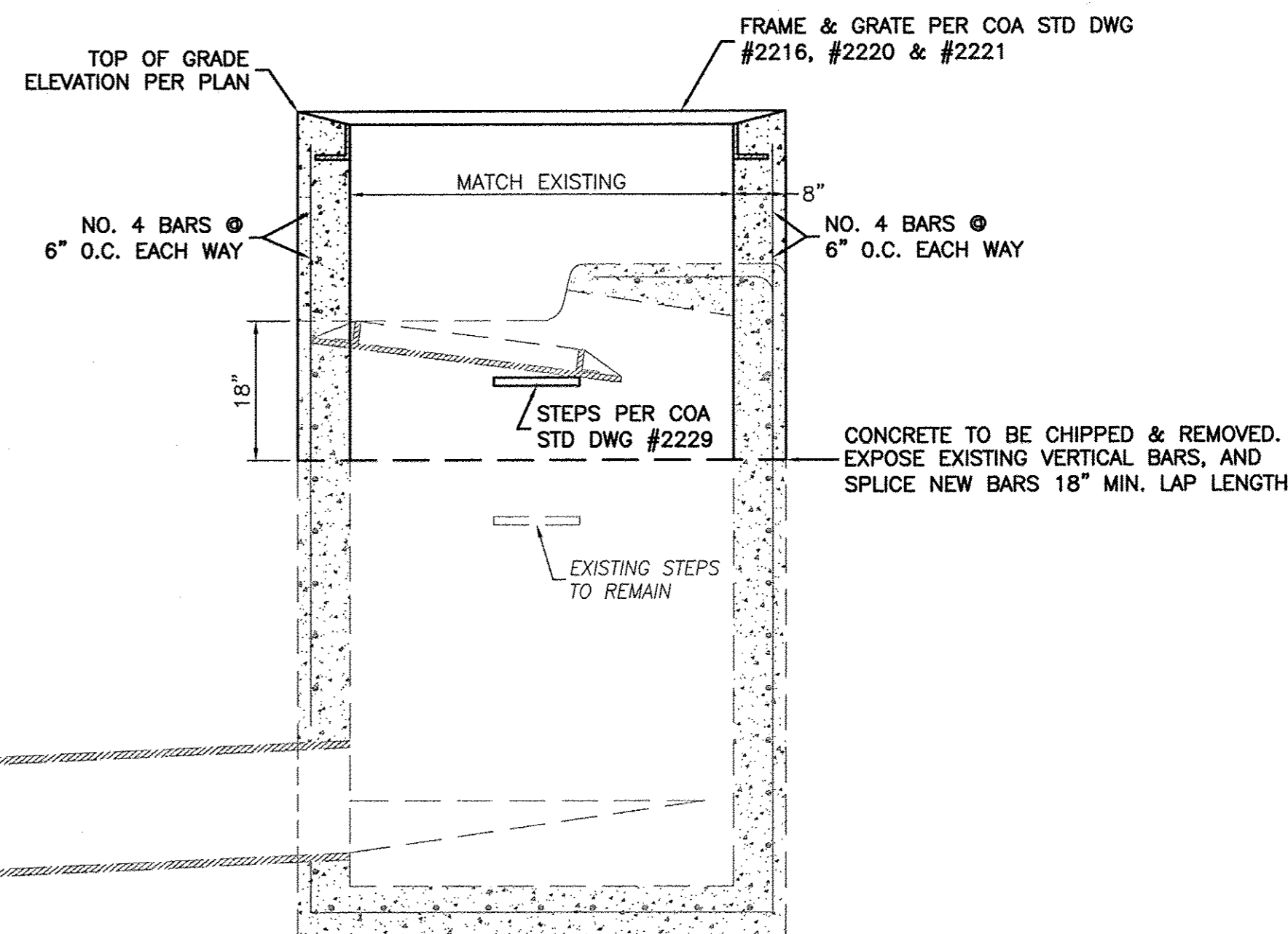


SANITARY SEWER DOUBLE CLEAN-OUTS
NTS

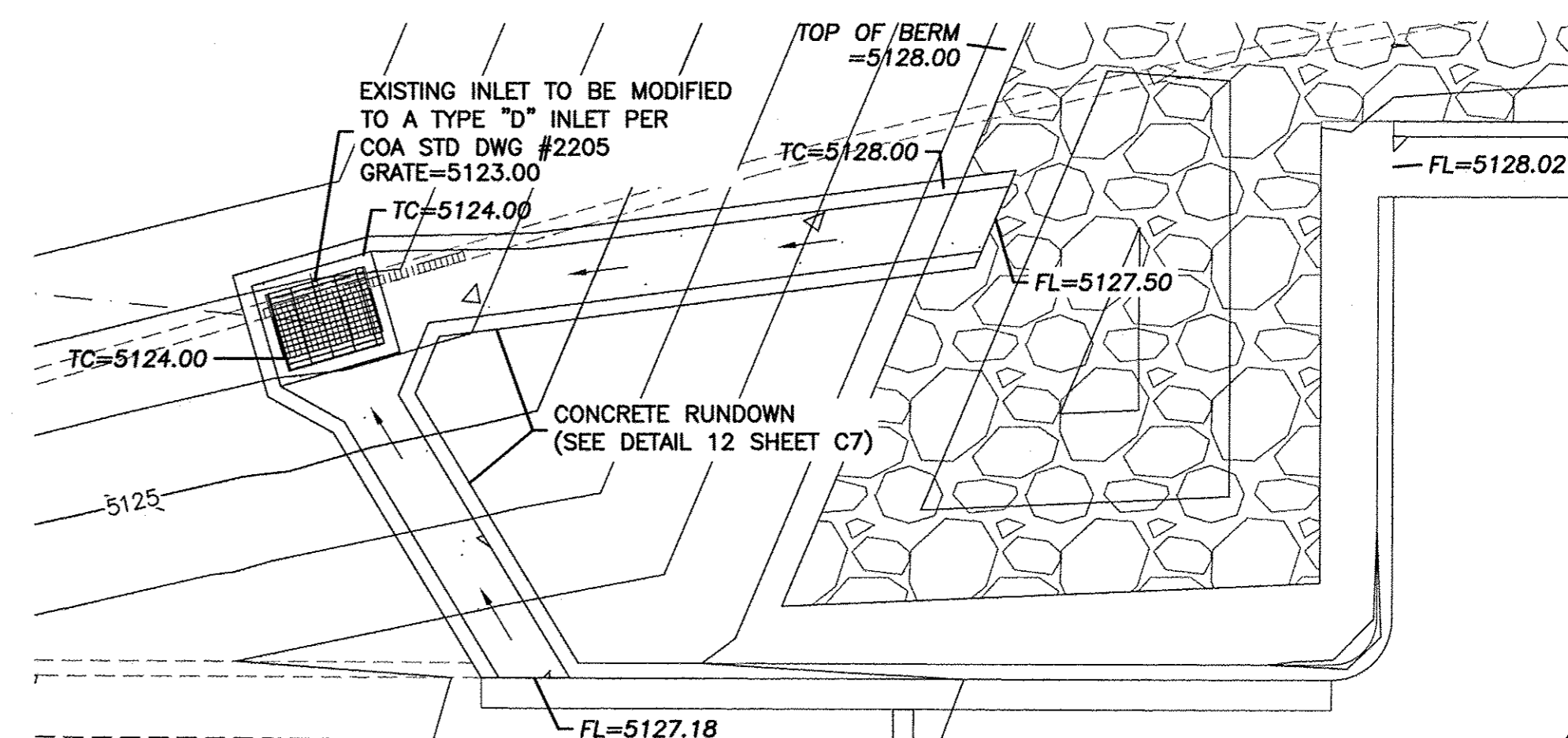


- NOTE:
1. DETAIL IS THE SAME AS SHOWN IN THE CITY OF ALBUQUERQUE STANDARD SPECIFICATION FOR PUBLIC WORKS DRAWING NO. 2102.
 2. USE NON-SHRINK GROUT FOR JOINTS, FILLETS, AND PIPE PENETRATIONS.
 3. COMPACT ALL BACKFILL AROUND MANHOLES TO 95%.
 4. POSITION MANHOLE OPENING OVER THE UPSTREAM SIDE OF MAIN LINE.

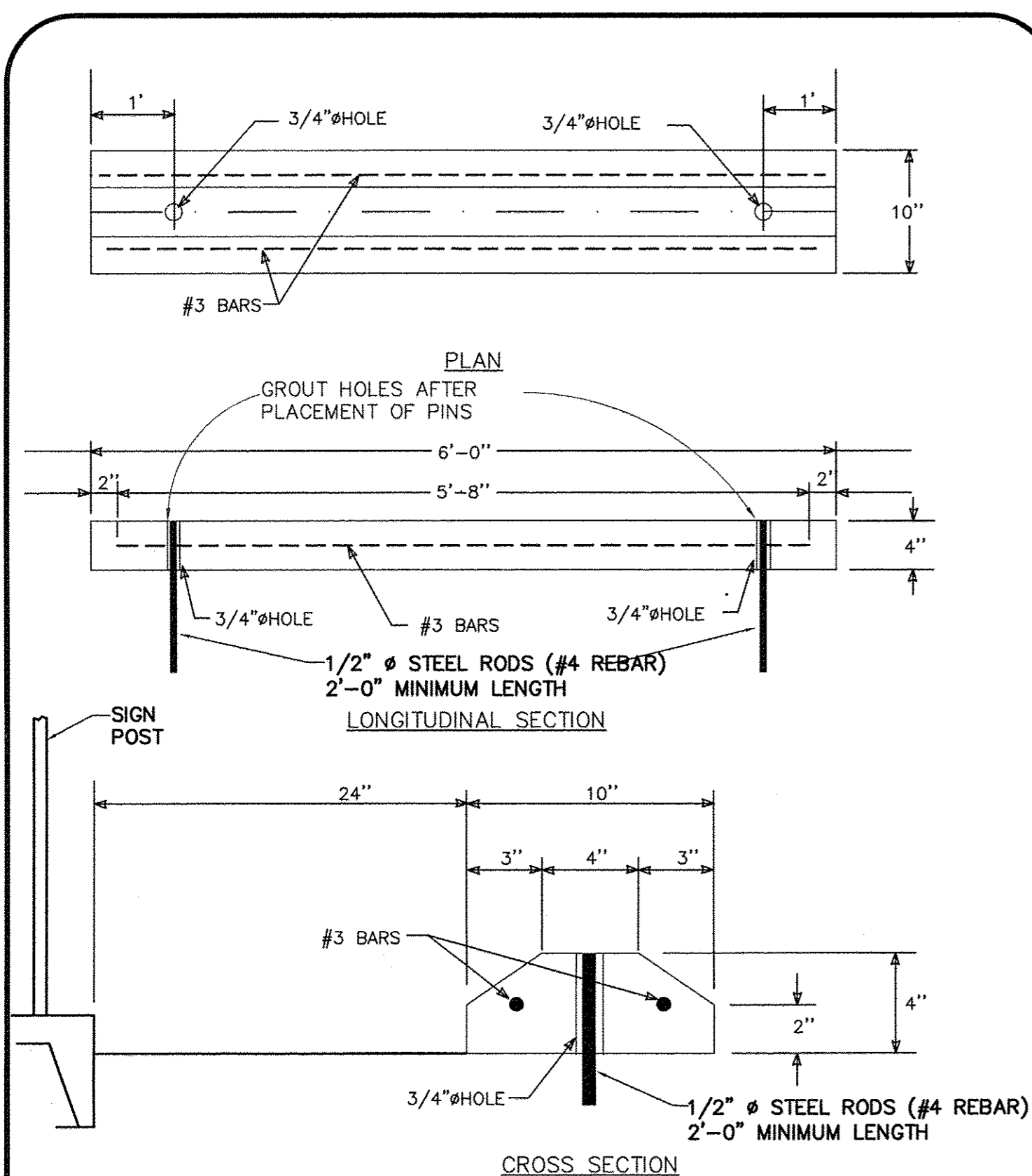
STORM SEWER MANHOLE TYPE 'E' DETAIL
NTS



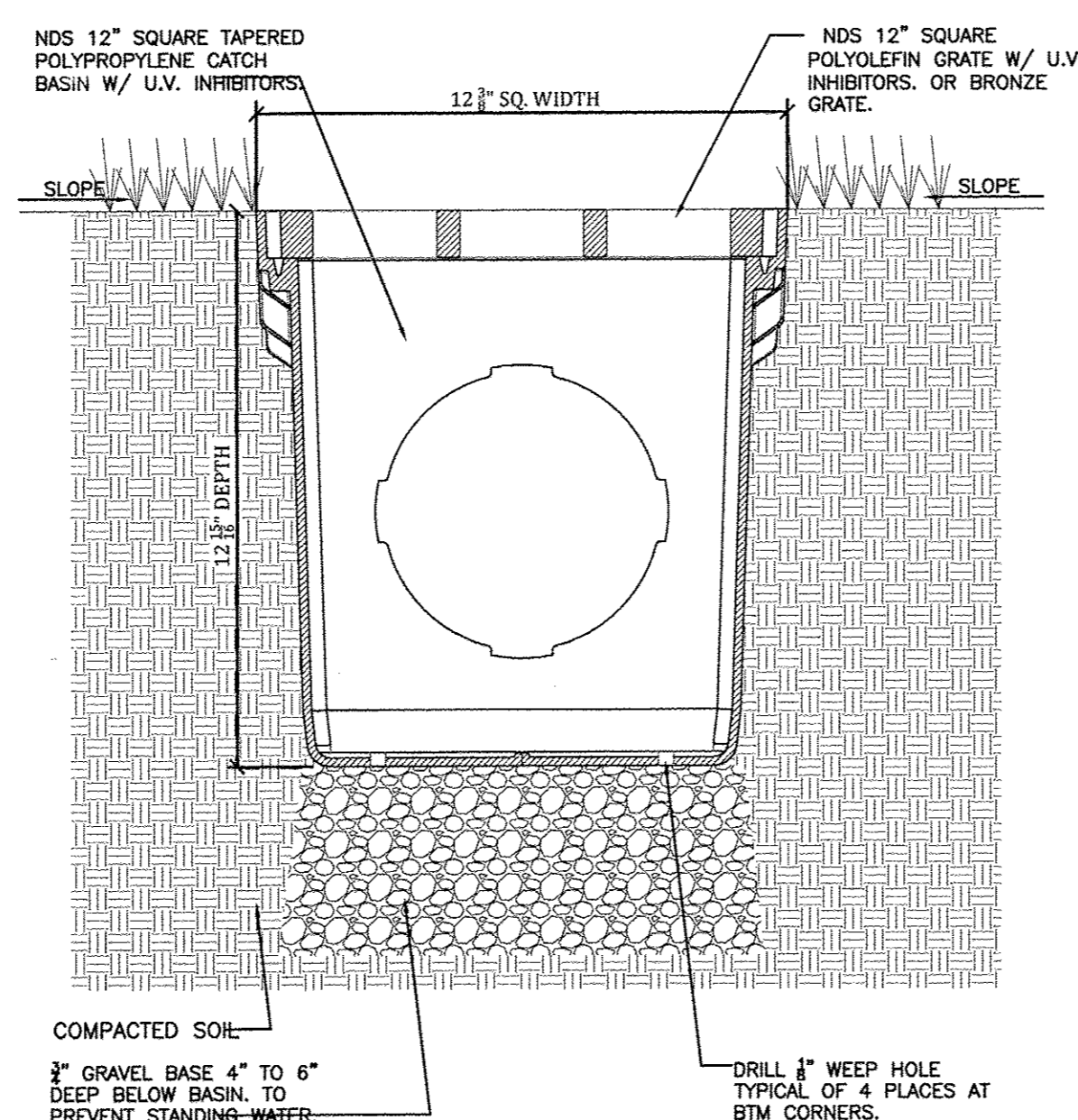
27 EXISTING INLET MODIFIED TO TYPE 'D' INLET DETAIL
NTS



DETAIL 'E'
NTS

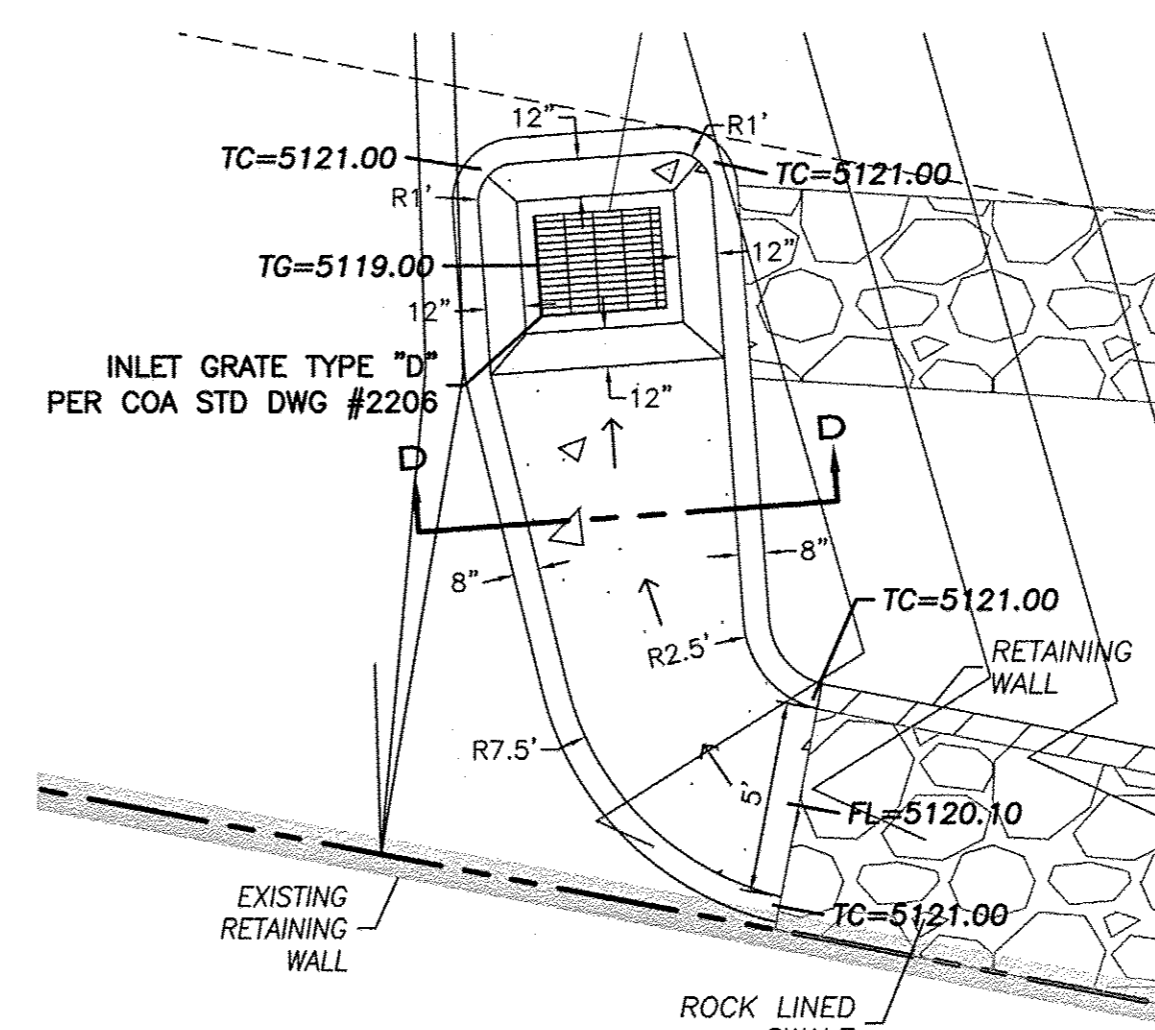


26 CURB STOP DETAIL
(N.T.S.)
(RE: SITE PLAN)

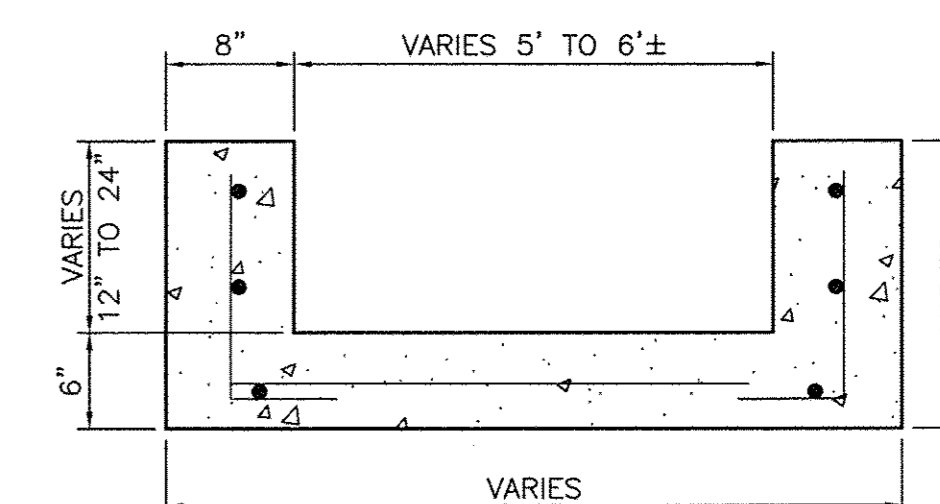


- NOTE:
- GRATE TO BE ATTACHED TO CATCH BASIN WITH SCREW PROVIDED AT TIME OF INSTALLATION.

NDS 12" sq. CATCH BASIN TYPICAL INSTALLATION
LANDSCAPE APPLICATION.



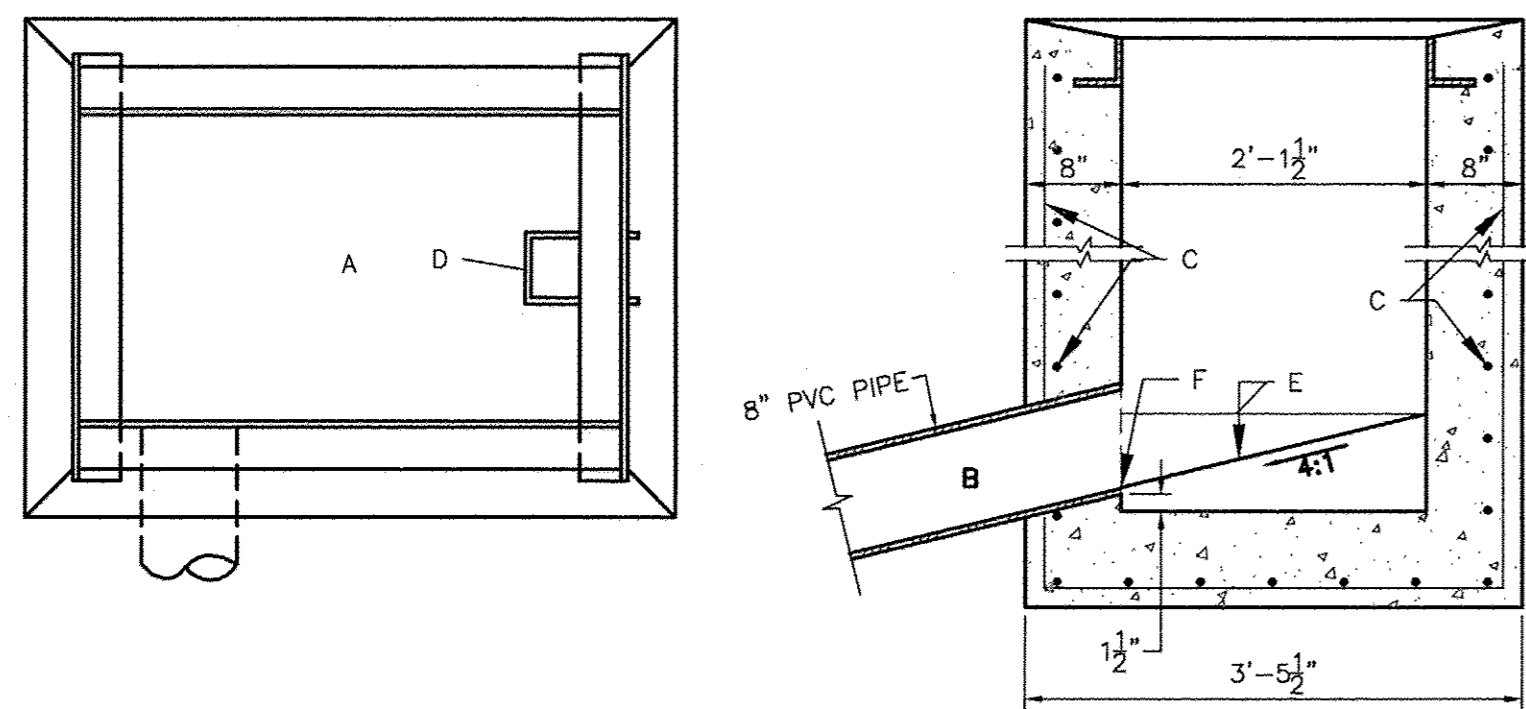
DETAIL 'D'
NTS



SECTION D-D
NTS

<p>ENGINEER'S SEAL</p> <p>RONALD R. BOHANNAN P.E. #7868</p>	<p>CHILI'S UNIVERSITY BLVD & GIBSON BLVD</p>		<p>DRAWN BY DY</p>
	<p>DETAIL SHEET</p>		<p>DATE 11/04/14</p>
	<p>TIERRA WEST, LLC 5571 MIDWAY PARK PLACE NE ALBUQUERQUE, NM 87109 (505) 858-3100 www.tierrawestllc.com</p>		<p>2013086_DTE</p>
	<p>C8</p>		<p>SHEET # C8</p>

ISSUE FOR PERMIT 9/17/14



GENERAL NOTES

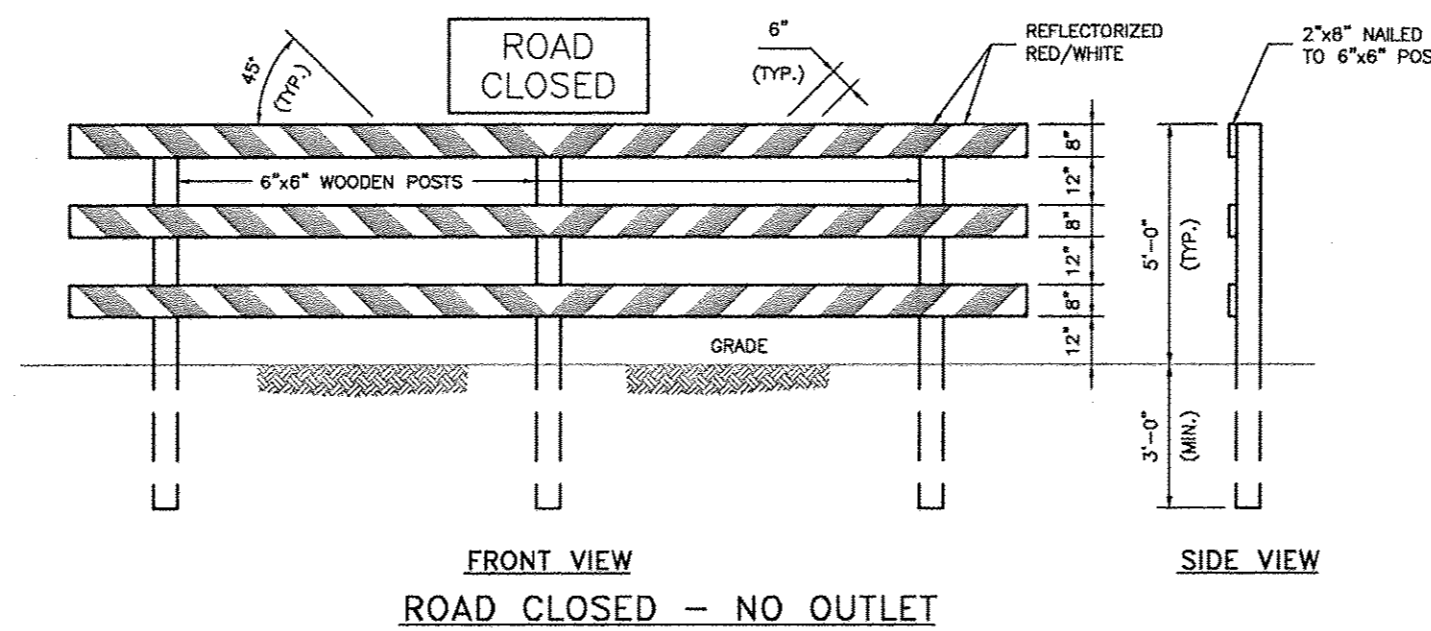
1. STORM INLET CUTTER TRANSITION WILL BE SHOWN ON THE CONSTRUCTION PLANS.
2. OUTLET PIPE, PER DESIGN REQUIREMENT.
3. FOR FRAME & GRATING, SEE DWG. 2216, 2220 & 2221

CONSTRUCTION NOTES

- A. FRAME & GRATE
- B. CUT ONE HORIZONTAL AND ONE VERTICAL BAR MAX. AT PIPE OPENING.
- C. NO. 4 BARS @ 6" O.C. EACH WAY
- D. USE STANDARD STEPS, SEE DWG. 2229.
- E. CONC. FILL, SEE NOTE C DWG. 2201
- F. INVERT PER DESIGN
- G. INSTALL STEPS ON DOWNSTREAM FACE

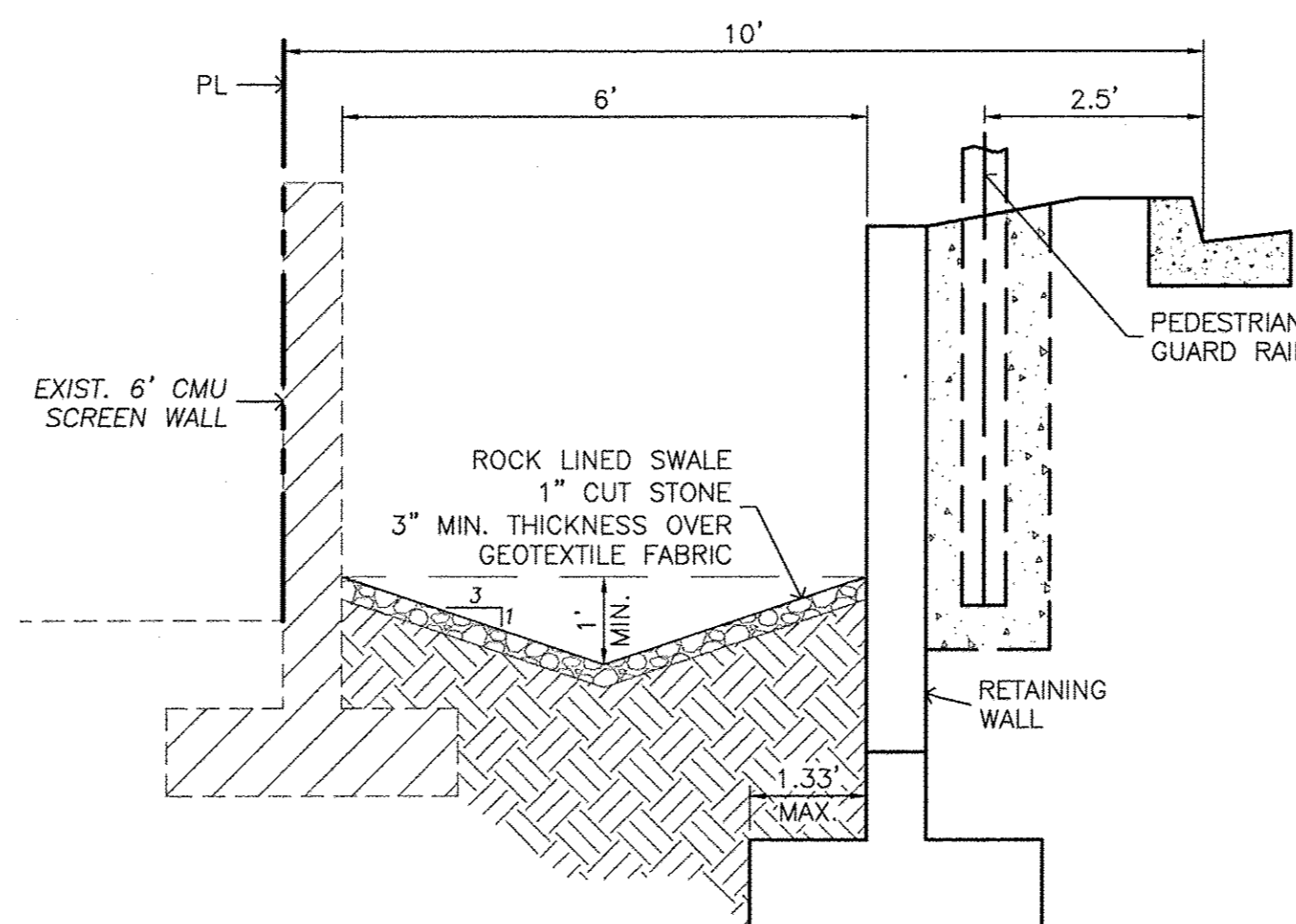
COA SINGLE 'D' INLET DETAIL

NTS



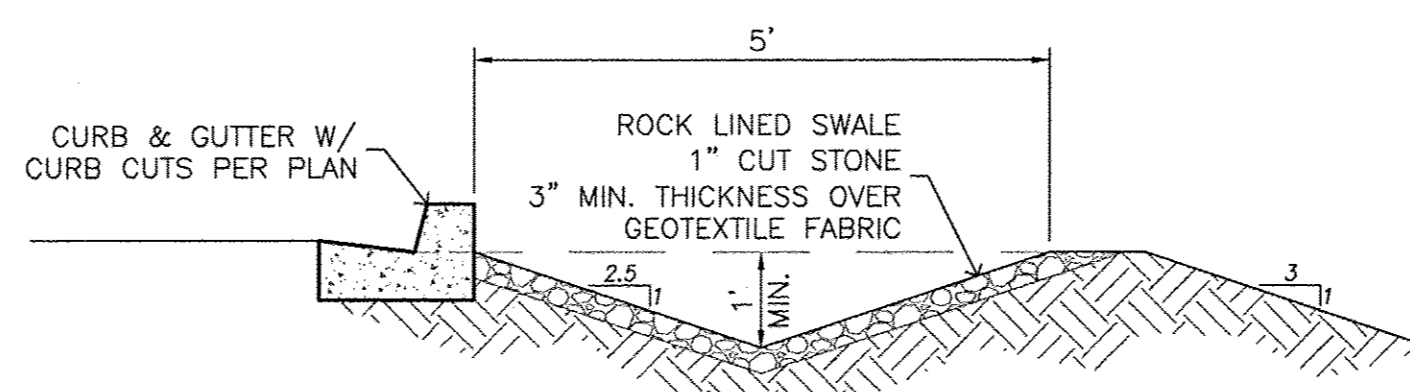
29 TYPE III BARRICADE

NTS



SECTION A-A

NTS

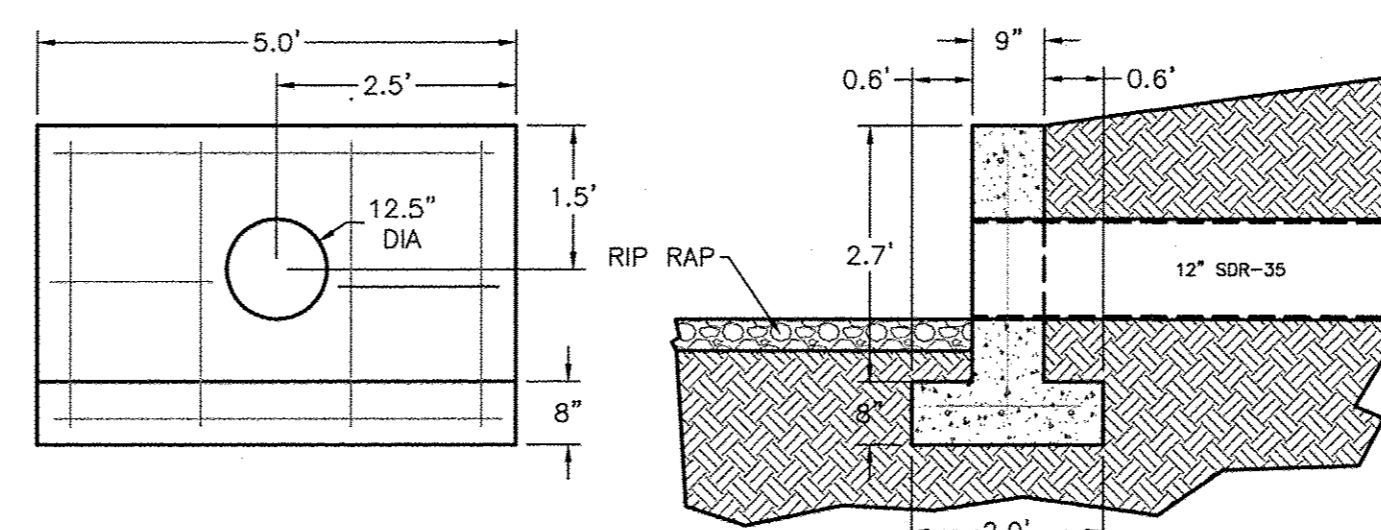


SECTION B-B

NTS

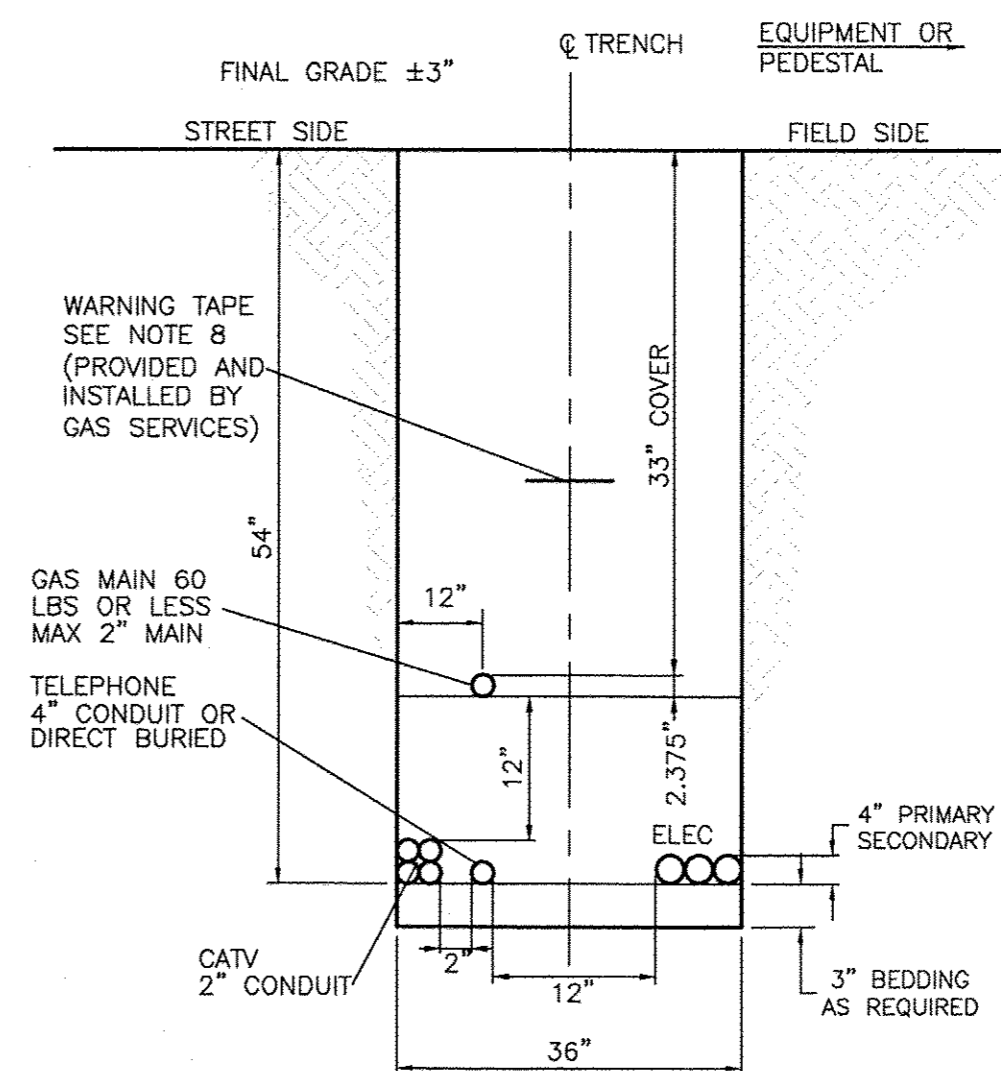
NOTES

1. CONCRETE SHALL BE 4000 PSI
2. ALL REINFORCING STEEL #4 BARS. ALL VERTICAL AND HORIZONTAL TIE BARS 18" MAX SPACING



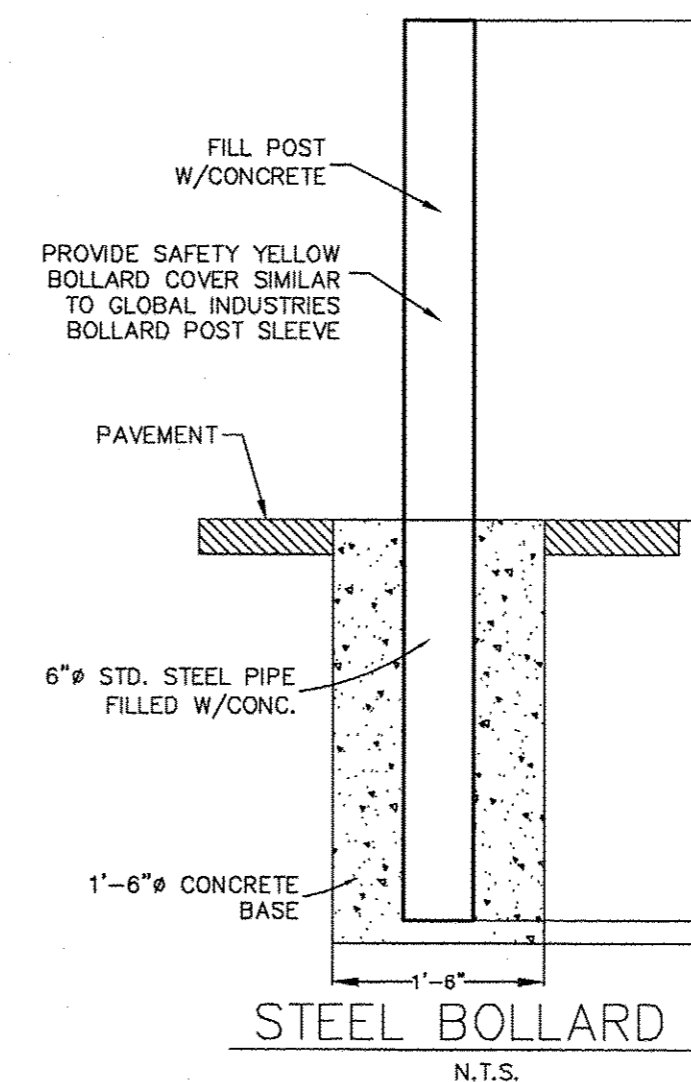
31 HEADWALL

NTS

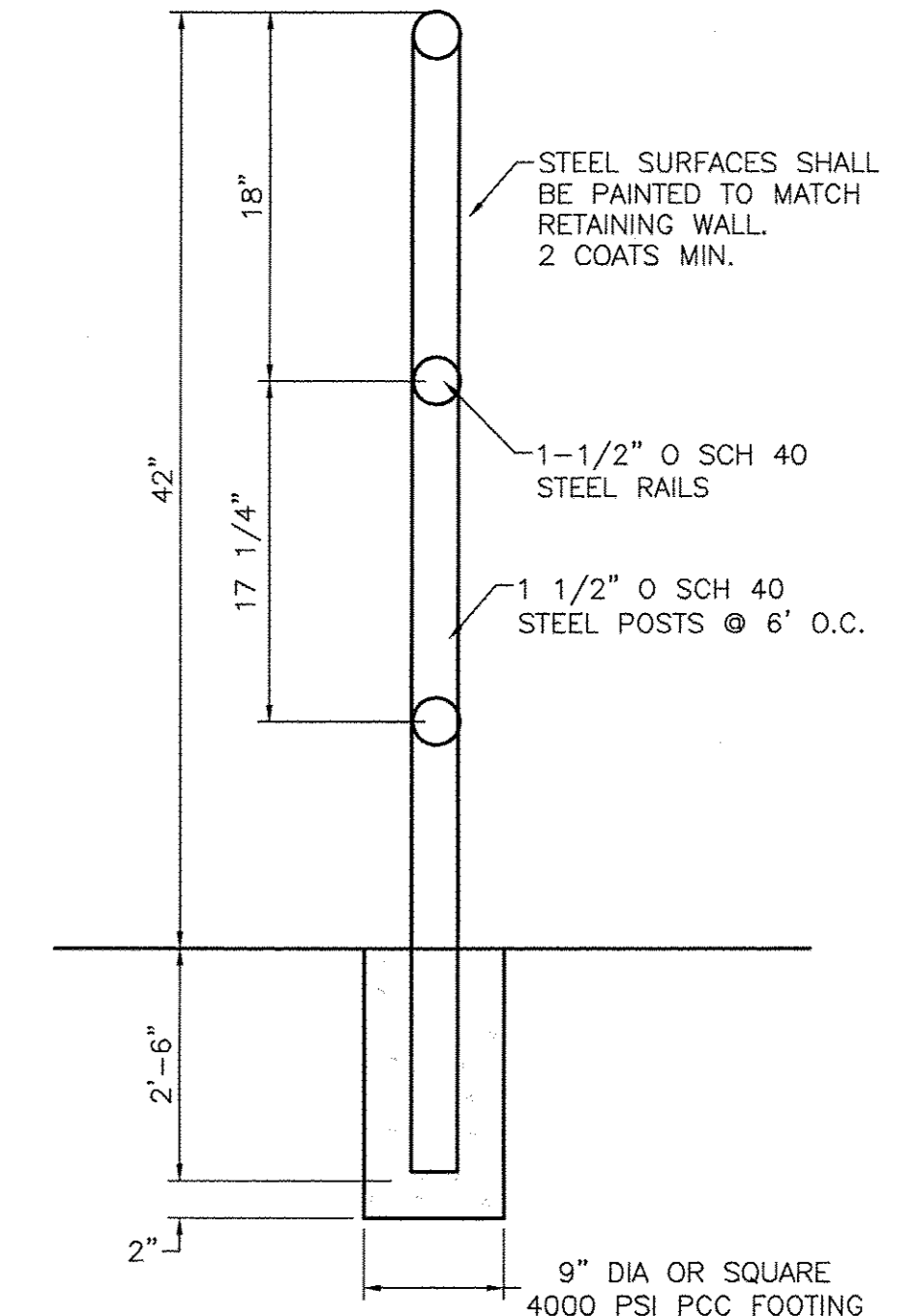


28 TYPICAL TRENCH DETAIL

NTS



N.T.S.



30 PEDESTRIAN GUARD RAIL DETAIL

NTS

	CHILI'S	DRAWN BY
	UNIVERSITY BLVD & GIBSON BLVD	DY
	DETAIL SHEET	DATE
		12/30/14
		2013086_DTE
		SHEET #
		C9
		JOB #
		2013086

ISSUE FOR PERMIT 9.17.14