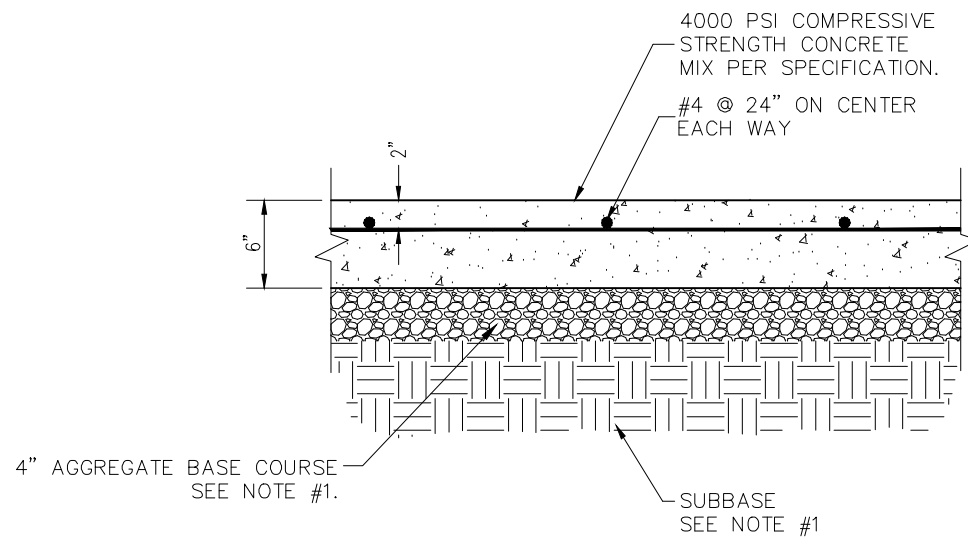
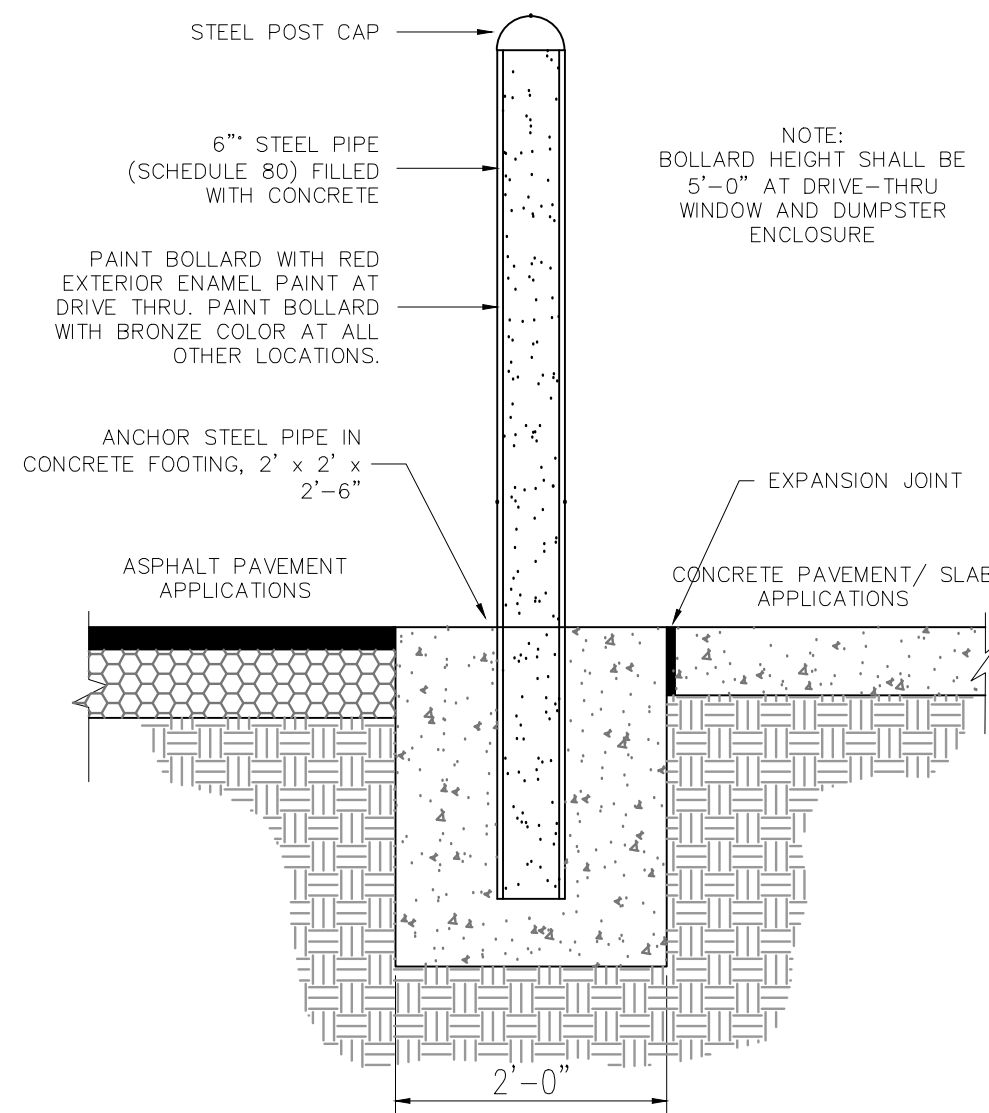


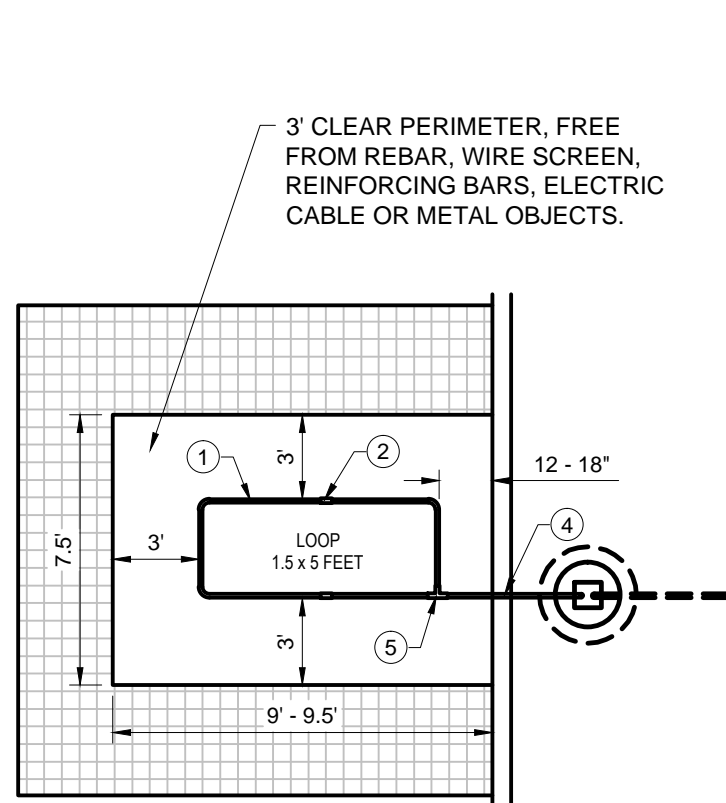
26
C-4.2
12" CURB CUT DETAIL
NOT TO SCALE



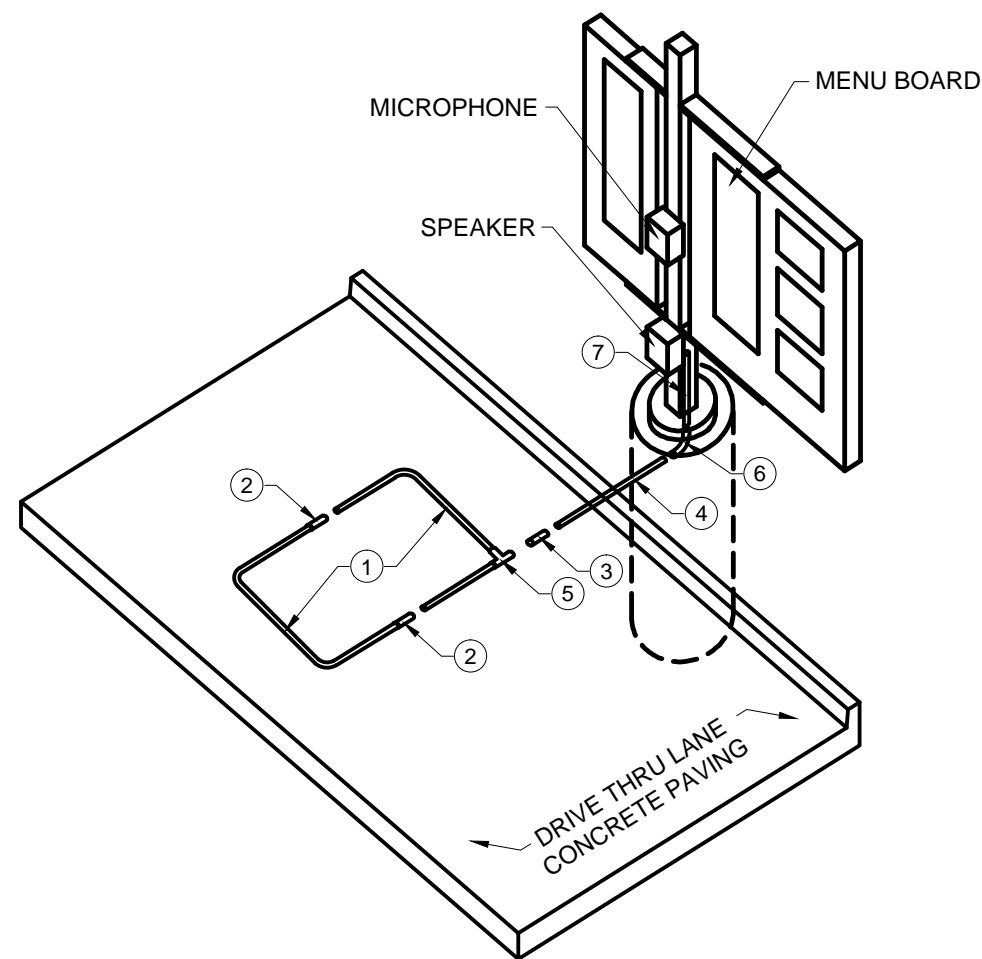
25
C-4.2
CONCRETE PAVING DRIVE-THRU LANE
NOT TO SCALE
NOTE:
1. GENERAL CONTRACTOR SHALL REFERENCE GEOTECHNICAL REPORT FOR PAVEMENT SECTION REQUIREMENTS.



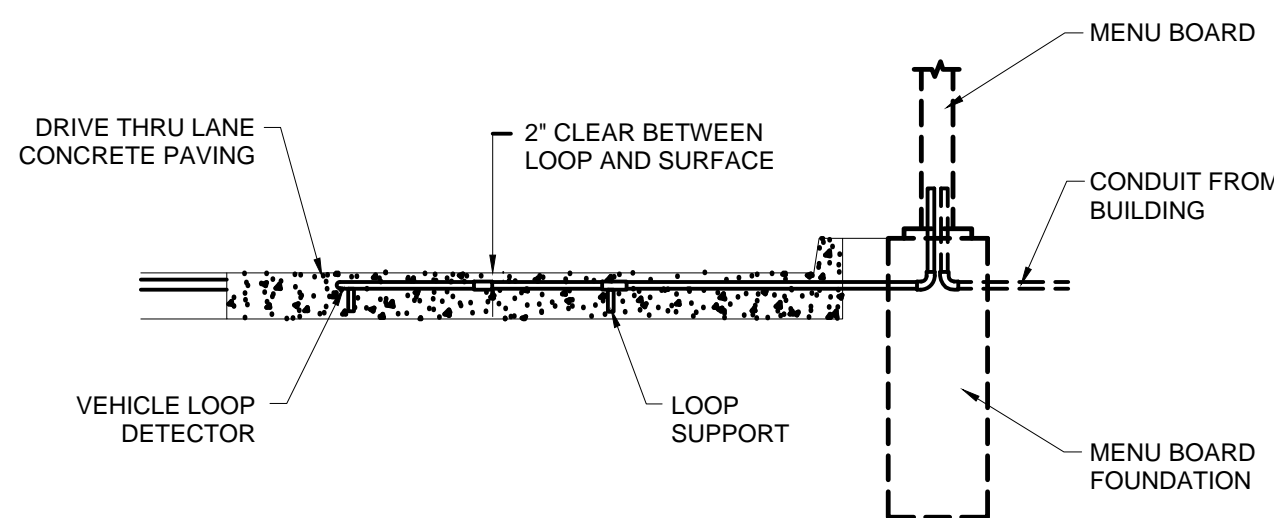
33
C-4.2
DRIVE THRU ORDER POINT BOLLARD
NOT TO SCALE



PLAN VIEW



ISOMETRIC VIEW



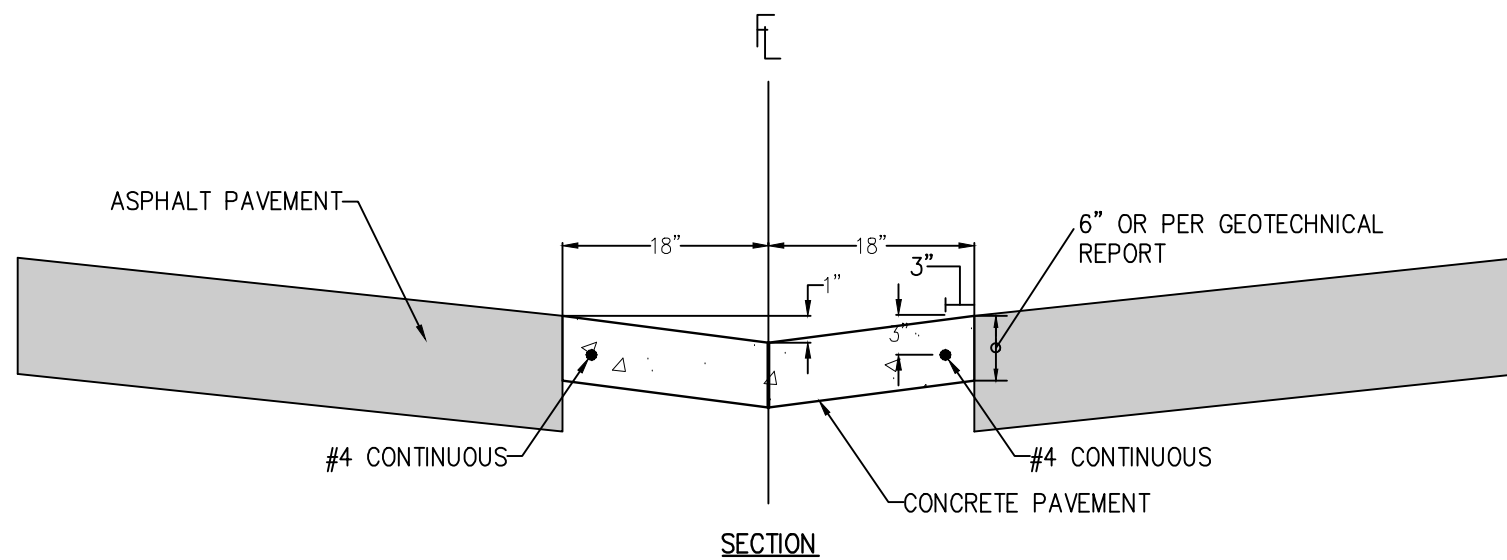
SECTION VIEW

PARTS LIST

1. PREFAB (FOLDED) LOOP (1.5' x 5')
2. 1/2" PVC COUPLING
3. 1/2" PVC SLEEVE COUPLING
4. 1/2" PVC TUBING (3' LENGTH)
5. 1/2" PVC CORNER FITTING
6. 1/2" PVC 90° ELBOW
7. 1/2" PVC TUBING (2' LENGTH)

35
C-4.2
MENU BOARD LOOP DETECTION SYSTEM
NOT TO SCALE


- NOTE:
1. LOOP DETECTOR IS MODEL NO. VDL100 VEHICLE DETECTION LOOP MANUFACTURE BY MH ELECTRONICS INC.
 2. FOLLOW MANUFACTURES RECOMMENDATIONS FOR INSTALLATION.



37
C-4.2
3' WIDE CONCRETE PAN DETAIL
NOT TO SCALE

- NOTES:
1. REFER TO SHEET C-4.1, DETAIL 17 FOR CONCRETE SPECIFICATIONS FOR CONCRETE PAN





Chick-fil-A
5200 Buffington Rd.
Atlanta, Georgia
30349-2998


Revisions:

Mark	Date	By
△		

Mark	Date	By
△		

Mark	Date	By
△		

Seal



For and on Behalf of
Merrick & Company

MERRICK & COMPANY
5970 GREENWOOD PLAZA BLVD
GREENWOOD VILLAGE, CO 80111
303-751-0741

STORE
CHICK-FIL-A
FSU #03484
WYOMING BLVD.

2274 WYOMING BLVD.
ALBUQUERQUE, NM
87112

SHEET TITLE
**CHICK-FIL-A
DETAILS**

DWG EDITION ---

Job No. : 65118374
Store : 03484
Date : 12/15/14
Drawn By : JD
Checked By: TDK

Sheet
C-4.2