

CONTRACTOR MUST COMPLETE CONSTRUCTION SITE NOTICE, OBTAIN SIGNED COPIES OF NOI FORM FOR BOTH OWNER AND CONTRACTOR (IF APPLICABLE TO THIS SITE), AND POST THEM AT THE CONSTRUCTION SITE, IN ACCORDANCE WITH THE NATIONAL POLLUTANT DISCHARGE ELIMINATION SYSTEM (NPDES) GENERAL PERMIT FOR CONSTRUCTION ACTIVITIES IN NEW MEXICO (NWR120000). THE GENERAL CONTRACTOR, (AND ALL SUBCONTRACTORS INVOLVED WITH ANY CONSTRUCTION ACTIVITY RELATED TO EARTHWORK, EROSION CONTROL, ETC.) SHALL BE RESPONSIBLE FOR OBTAINING AND POSTING THE GENERAL PERMIT. THE PERMIT MUST BE FAMILIAR WITH THE CONTENTS OF THE STORM WATER POLLUTION PREVENTION PLAN (SWPPP) AS WELL AS ALL THE REQUIREMENTS SET FORTH IN THE NPDES GENERAL PERMIT AND ANY APPLICABLE LOCAL PERMIT REQUIREMENTS, AND SHALL COMPLY WITH ALL SUCH REQUIREMENTS DURING ALL CONSTRUCTION ACTIVITIES.

2. THE CONTRACTOR SHALL MAINTAIN THE SEQUENCE OF OPERATIONS FOR EROSION CONTROL IMPLEMENTATION SHOWN HEREON. ANY DEVIATION FROM THIS SEQUENCE DEEMED NECESSARY BY THE CONTRACTOR MAY REQUIRE THAT THE STORMWATER POLLUTION PREVENTION PLAN BE MODIFIED IN ACCORDANCE WITH THE NPDES GENERAL PERMIT GUIDELINES AND THE STORM WATER POLLUTION PREVENTION PLAN PREPARED FOR THIS SITE.

3. THE CONTRACTOR SHALL MAINTAIN THE GENERAL PLAN TO SHOW LOCATIONS OF TEMPORARY WASHDOWN AREAS, PORTABLE TOILETS, EQUIPMENT MAINTENANCE/REPAIR AREAS, STOCKPILE AREAS, FUEL STORAGE AREAS, CONCRETE WASHOUT PITS, AND POLLUTANT CONTROLS FOR EACH, AS SOON AS POSSIBLE. THE GENERAL PERMIT PROHIBITS THE DISCHARGE OF WASTEWATER FROM CONCRETE WASHOUT PITS AND CLEANOUT OF STUCCO, PAINT, FORM RELEASE OILS, CURING COMPOUNDS, AND OTHER CONSTRUCTION MATERIALS, UNLESS MANAGED BY AN APPROPRIATE SEPARATE EROSION CONTROL MEASURE.

4. THE GENERAL CONTRACTOR SHALL PERFORM ALL REQUIRED INSPECTIONS OF STORMWATER CONTROLS AND PRACTICES AT FREQUENCIES GIVEN IN THE NPDES GENERAL PERMIT, AND SHALL COMPLETE AND SIGN APPROPRIATE INSPECTION FORMS (AS PROVIDED IN THE STORMWATER POLLUTION PREVENTION PLAN).

5. OIL AND GREASE ABSORBING MATERIALS SHALL BE READILY AVAILABLE ON-SITE AND SHALL BE PROMPTLY USED TO CONTAIN AND/OR CLEAN UP OILS, FUELS, GREASE, AND OTHER SPILLS OR LEAKS.

6. DUST CONTROL SHALL BE ACCOMPLISHED BY WATERING DIRT, EXPOSED AREAS ON A REGULAR BASIS. SPRAYING OF PETROLEUM BASED OR TOXIC LIQUIDS FOR THIS PURPOSE IS PROHIBITED.

7. DISTURBED AREAS OF THE SITE WHERE CONSTRUCTION ACTIVITIES HAVE CEASED FOR FOURTEEN (14) MORE DAYS SHALL BE PERMANENTLY STABILIZED WITH VEGETATION, MULCH, CRUSHED ROCK, OR OTHER APPROPRIATE MATERIALS.

8. DISTURBED AREAS OF THE SITE WHERE CONSTRUCTION ACTIVITIES HAVE PERMANENTLY CEASED SHALL BE PERMANENTLY STABILIZED WITHIN FOURTEEN (14) DAYS PER LANDSCAPING SPECIFICATIONS WITH VEGETATION, MULCH, CRUSHED ROCK, OR OTHER APPROPRIATE MATERIALS.

9. ALL SURFACES SHALL BE CLEANED AT THE CONSTRUCTION EXIT POINTS ACCORDING TO NOTES SHOWN ON THE DETAIL THEREOF. IF THE MAJORITY OF MUD OR DIRT IS NOT REMOVED FROM EXITING TRAFFIC, HOVE BIBS SHALL BE PROVIDED AT CONSTRUCTION TRAFFIC EXIT POINTS, AND VEHICLE TIRES SHALL BE WASHED BEFORE EXITING ONTO PUBLIC ROADS. SILT FROM THIS WASHING OPERATION SHALL BE CONTAINED AND NOT ALLOWED TO BE TRANSPORTED OFF-SITE.

10. ALL MATERIALS SPILLED, DROPPED, WASHED OR TRACKED ONTO ADJACENT ROADWAYS BY VEHICLES EXITING THE SITE SHALL BE CLEANED OR REMOVED IMMEDIATELY.

11. CONTRACTOR SHALL PREVENT ANY SILTATION FROM ENTERING THE STORM SEWER SYSTEM, ALL INLETS AND INLET OPENINGS SHALL BE FULLY PROTECTED FROM SEDIMENT INFLOW WITH APPROPRIATE INLET PROTECTION DEVICES.

12. THE CONTRACTOR SHALL REMOVE ALL ACCUMULATED SILT IN ANY TEMPORARY OR PERMANENT DETENTION PONDS, STORM SEWER INLET AND PIPES, AND ALONG SILT FENCES, WITHIN 48 HOURS AFTER INSPECTION OF DEVICES REVEALS THE PRESENCE OF EXCESSIVE SILTATION (AS SPECIFIED IN THE STORM WATER POLLUTION PREVENTION PLAN).

13. ALL STOCKPILES SHALL BE PLACED AROUND THE PERIMETER OF THE PROJECT.

14. THE CONTRACTOR IS ADVISED TO CONSTRUCT TEMPORARY OR PERMANENT FENCING AROUND DETENTION PONDS AND SEDIMENT BASINS AT THE EARLIEST POSSIBLE TIME TO PREVENT ACCIDENTAL ACCESS BY PERSONS OR ANIMALS.

15. ANY ADDITIONAL EROSION CONTROL MEASURES REQUIRED TO ENSURE COMPLIANCE WITH THE NPDES GENERAL PERMIT OR LOCAL PERMIT REQUIREMENTS SHALL BE IMPLEMENTED BY THE CONTRACTOR, AT NO ADDITIONAL EXPENSE TO THE OWNER.

16. ALL TEMPORARY EROSION CONTROL MEASURES SHALL BE REMOVED AND PROPERLY DISPOSED OF OFF-SITE WITHIN THIRTY DAYS AFTER PERMANENT STABILIZATION OF ALL SURFACES IS ACHIEVED.

17. THE CONTRACTOR SHALL ASSUME LIABILITY FOR DAMAGE TO ADJACENT PROPERTIES AND/OR PUBLIC RIGHT-OF-WAY RESULTING FROM FAILURE TO FULLY PROTECT FROM SEDIMENT INFLOW AND/OR PROPERLY DISPOSED OF OFF-SITE.

18. WHENEVER DIRT, ROCK, OR OTHER MATERIALS ARE EXPORTED FOR USE OFF OF THE PRIMARY CONSTRUCTION SITE, CONTRACTOR SHALL ASSUME RESPONSIBILITY FOR COMPLIANCE WITH ALL EPA AND NMED STORMWATER REQUIREMENTS FOR THE REMOTE SITE. CONTRACTOR SHALL FURNISH THE ENGINEER AND THE OWNER'S CONSTRUCTION MANAGER WITH DOCUMENTATION OF COVERAGE FOR THE BORROW OR OFF-SITE UNDER THE NMED STORMWATER POLLUTION PREVENTION PLAN. THE DOCUMENTATION SHALL BE IN THE LANDOWNER'S RECORD. THE REMOTE SITE INDICATING EROSION CONTROL MEASURES HAVE BEEN IMPLEMENTED THEREON. AT A MINIMUM, EROSION CONTROL MEASURES MUST CONSIST OF PERIMETER CONTROLS (SILT FENCES AND/OR STRAW WATTLES) ON ALL DOWN SLOPE AND SIDE SLOPE BOUNDARIES OF ANY DISTURBED AREA, PLUS PROVISIONS FOR RE-ESTABILIZATION AFTER THE FILL MATERIALS ARE IN PLACE.

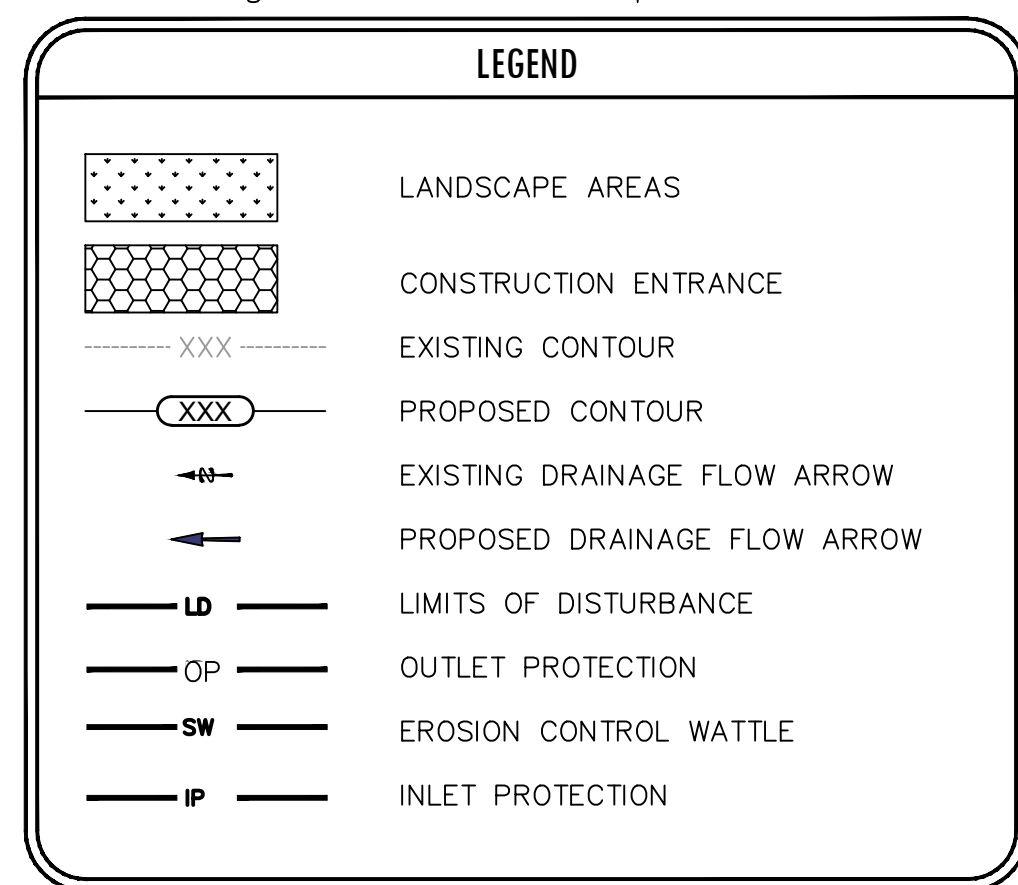
19. ALL SLOPES ON SITE WITH A 1:1 OR STEEPER SLOPE SHALL BE STABILIZED BY TRACK WALKING (TRAVERSING THE SLOPE) AND/OR TRACKED WALKING (DOWNWARD FLOWED) TO INDUCE EROSION INSTANTLY. THE TRACKING SHALL BE IN ACCORDANCE WITH MANUFACTURER'S INSTRUCTIONS (EROSION CONTROL BLANKET SHALL BE NORTH AMERICAN GREEN S150, OR APPROVED EQUAL) OR OTHER EQUIVALENT STABILIZATION MEASURES APPROPRIATE FOR USE ON STEEP SLOPES.

- ALL EROSION AND SEDIMENT CONTROL (ESC) WORK ON THESE PLANS, EXCEPT AS OTHERWISE STATED OR DETERMINED HEREON SHALL BE PERMITTED, CONSTRUCTED, INSPECTED, AND MAINTAINED IN ACCORDANCE WITH:
  - a. THE CITY ORDINANCE § 14-5-2-11, THE ESC ORDINANCE.
  - b. THE EPA 1992 CONSTRUCTION GENERAL PERMIT, AND
  - c. THE CITY OF ALBUQUERQUE CONSTRUCTION BMP MANUAL.
2. ALL BMP'S MUST BE INSTALLED PRIOR TO BEGINNING ANY EARTH MOVING ACTIVITIES EXCEPT AS SPECIFIED HEREON IN THE PHASING PLAN. CONSTRUCTION OF EARTHEN BMP'S SUCH AS SEDIMENT TRAPS, SEDIMENT BASINS, AND DIVERSION BERMS SHALL BE COMPLETED PRIOR TO ANY CONSTRUCTION OF EARTHWORK. SELF-INSPECTION IS REQUIRED AFTER INSTALLATION OF THE BMP'S AND PRIOR TO BEGINNING CONSTRUCTION.
  - a. SELF-INSPECTIONS - IN ACCORDANCE WITH CITY ORDINANCE § 14-5-2-11(C)(1), AT A MINIMUM A ROUTINE SELF-INSPECTION IS REQUIRED TO REVIEW THE PROJECT FOR COMPLIANCE WITH THE CONSTRUCTION GENERAL PERMIT ONCE EVERY 14 DAYS AND AFTER ANY PRECIPITATION EVENT OF 0.2 INCH OR GREATER.
  - b. INSPECTION REPORTS - INSPECTION REPORTS HAVE BEEN COMPLETED AND THE SITE DETERMINED AS STABILIZED BY THE CITY. REPORTS OF THESE INSPECTIONS SHALL BE KEPT BY THE PERSON OR ENTITY AUTHORIZED TO DIRECT THE CONSTRUCTION ACTIVITIES ON THE SITE AND MADE AVAILABLE UPON REQUEST.
  - c. CORRECTIVE ACTION - CORRECTIVE ACTION SHALL BE KEPT BY THE PERSON OR ENTITY AUTHORIZED TO DIRECT THE CONSTRUCTION ACTIVITIES ON THE SITE AND MADE AVAILABLE UPON REQUEST.
3. FINAL STABILIZATION AND NOTICE OF TERMINATION (NOT) - IN ACCORDANCE WITH CITY ORDINANCE § 14-5-2-21(C)(1), SELF-INSPECTIONS MUST CONTINUE UNTIL THE SITE IS DETERMINED AS STABILIZED BY THE CITY: THE PROPERTY OWNER/OPERATOR IS RESPONSIBLE FOR OBTAINING AND PROVIDING THE COVERED AREA FOR CORRECTIVE ACTION. THE COVERED AREA MUST BE THEN FURNISHING THEIR NOTICE OF TERMINATION (NOT) WITH THE EPA. EACH OPERATOR MUST TERMINATE CPD COVERAGE ONLY ON ONE OF MORE OF THE CONDITIONS IN PART 8.2.1, 8.2.2, OR 8.2.3 HAS OCCURRED. AFTER FILING THE NOT WITH THE EPA, THE PROPERTY OWNER IS RESPONSIBLE FOR REQUESTING A DETERMINATION OF STABILIZATION FROM THE CITY.
4. WHEN DRAINAGE WORK IS COMPLETED, THE CITY (E.G. NEWBORN PARKS, UTILITIES, ETC.) PREVENT DIRT FROM GETTING INTO THE STREET. DIRT IS PRESENT IN THE STREET, THE STREET SHOULD BE SWEEPED DAILY PRIOR TO A RAIN EVENT OR CONTRACTOR INDUCED WATER EVENT (E.G. CURB CUT OR WATER TEST).
  - a. WHEN INSTALLING UTILITIES BEHIND THE CURB, THE EXCAVATED DIRT SHOULD NOT BE PLACED IN THE STREET.
  - b. AFTER CURBING THE STREET, THE DIRT SHOULD BE PLACED ON THE UPHILL SIDE OF THE STREET.
  - c. AFTER THE WORK IS COMPLETE, A WATTLE OR MULCH SOCK MAY BE PLACED AT THE TOE OF THE EXCAVATED DIRT PILE IF SITE CONSTRAINTS DO NOT ALLOW PLACING THE EXCAVATED DIRT ON THE UPHILL SIDE OF THE STREET CUT.
5. ESC PLANS MUST SHOW LONGITUDINAL STREET SLOPE AND STREET NAMES. ON STREETS WHERE THE LONGITUDINAL SLOPE IS STEEPER THAN 2.5%, WATTLES/MULCH SOCKS OR J-HOOD SILT FENCE SHALL BE SHOWN IN THE FRONT YARD SWALE OR ON THE SIDE OF THE STREET.

D ALL MEASURES STATED ON THIS EROSION AND SEDIMENT CONTROL PLAN, AND IN THE STORM WATER POLLUTION PREVENTION PLAN, SHALL BE MAINTAINED IN FULLY FUNCTIONAL CONDITION UNTIL NO LONGER REQUIRED FOR A COMPLETED PHASE OF WORK OR FINAL STABILIZATION OF THE SITE. ALL EROSION AND SEDIMENTATION CONTROL MEASURES SHALL BE CHECKED BY A QUALIFIED PERSON ON A SCHEDULE WHICH COMPLIES WITH THE GENERAL PERMIT REQUIREMENTS AND CLEANED AND REPAIRED WITHIN 48 HOURS OF THE INSPECTION IN ACCORDANCE WITH THE FOLLOWING:

4. INSTALL STRAW WATTLLES AROUND DISTURBED AREAS AS SHOWN.
5. INSTALL INLET PROTECTION FOR ALL EXISTING GRATE INLETS, CURB INLETS AND AT THE ENDS OF ALL EXPOSED STORM SEWER PIPES, IF PRESENT.
6. CONSTRUCT TEMPORARY CONSTRUCTION EXIT.
7. COMMENCE GRUBBING AND REMOVAL OF VEGETATION IN AREA TO RECEIVE CUT OR FILL.
8. SAWCUT FULL DEPTH WHERE SHOWN. USE SAWCUT EDGE TO RETAIN SEDIMENT DURING DEMOLITION.
9. MAINTAIN DEMOLITION. LOAD DOLISHED MATERIAL DIRECTLY TO TRUCKS.
10. COMMENCE GRADING OPERATION FOR BUILDING PAD PREPARATION (SEE GRADING PLAN).
11. INSTALL ALL UNDERGROUND UTILITIES.
12. FINALIZE PAVEMENT SUBGRADE PREPARATION.
13. INSTALL EXPOSED STORM SEWER PIPES AND INLET PROTECTION SILT FENCES AT ENDS OF EXPOSED PIPES.
14. CONSTRUCT ALL GRATE INLETS AND DRAINAGE STRUCTURES. INLET PROTECTION SILT FENCES MAY BE REMOVED TEMPORARILY FOR THIS CONSTRUCTION.
15. REMOVE SILT FENCES AROUND INLETS AND MANHOLES NO MORE THAN 48 HOURS PRIOR TO PLACING STABILIZED BASE COURSE.
16. INSTALL BASE MATERIAL AS REQUIRED FOR PAVEMENT, CURB AND GUTTER.
17. INSTALL ALL PAVING, CURB AND GUTTER.
18. COMPLETE PLANTING AND/OR SEEDING OF VEGETATED AREAS TO ACCOMPLISH STABILIZATION IN ACCORDANCE WITH THE LANDSCAPING PLAN. THROUGHOUT THE PROJECT AND THE MAINTENANCE PERIOD FOR TURFGRASS, IT IS THE CONTRACTOR'S RESPONSIBILITY TO MAINTAIN THE TOPSOIL IN PLACE AT SPECIFIED GRADES. TOPSOIL AND TURFGRASS LOSSES DUE TO EROSION WILL BE REPLACED BY THE CONTRACTOR UNTIL ESTABLISHMENT AND ACCEPTANCE IS ACHIEVED.
19. REMOVE STRAW WATTLLES.

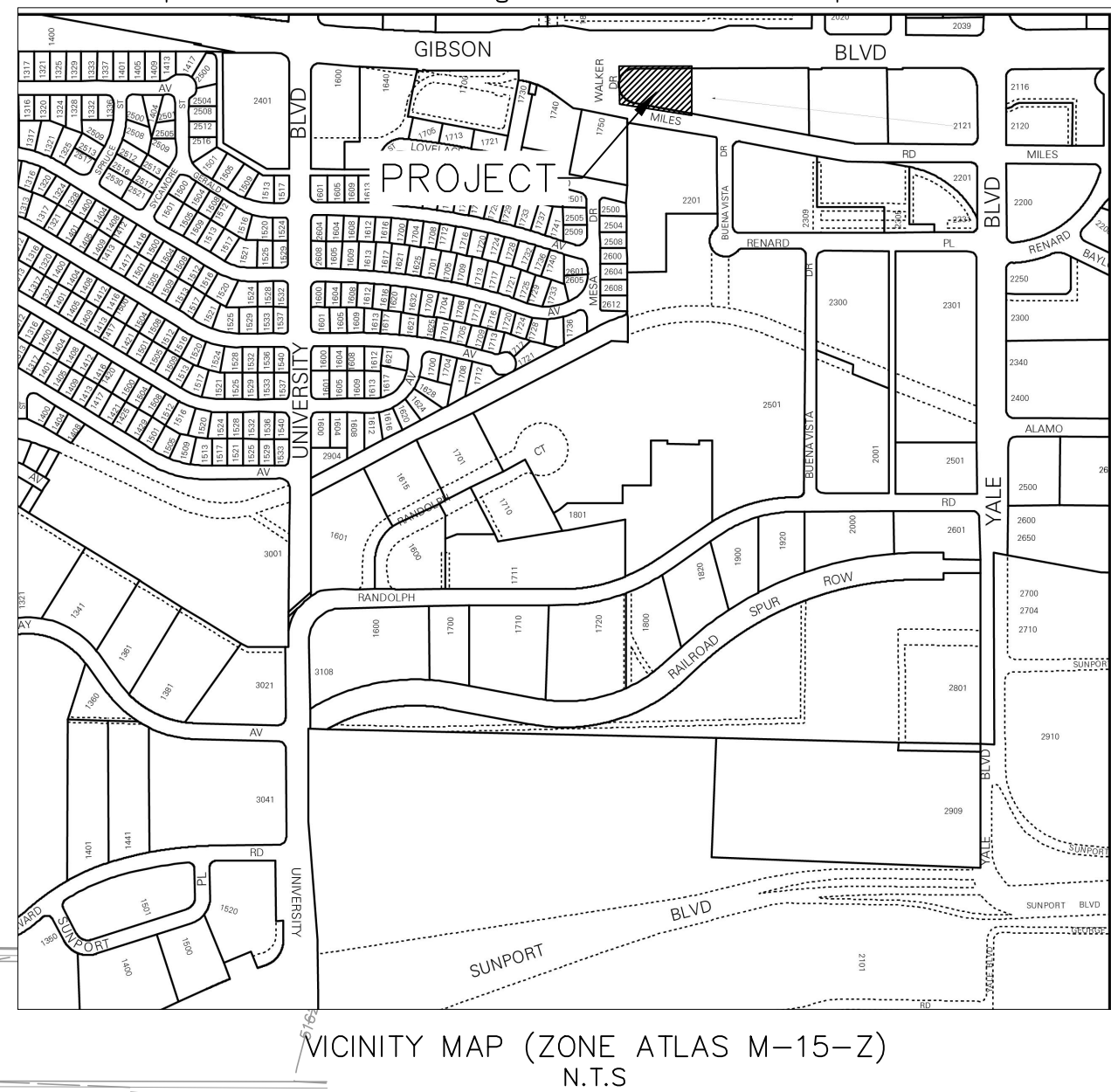
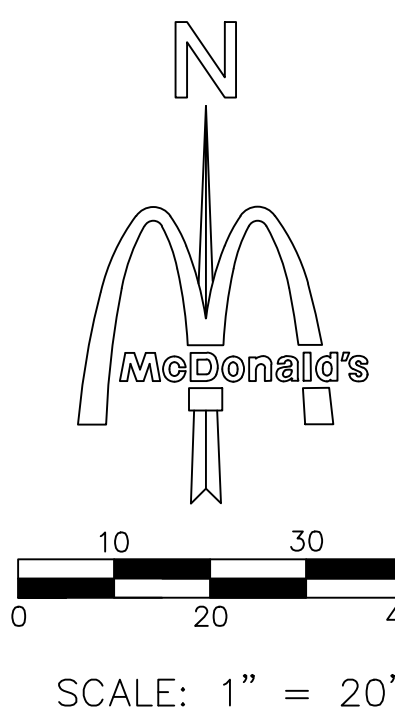
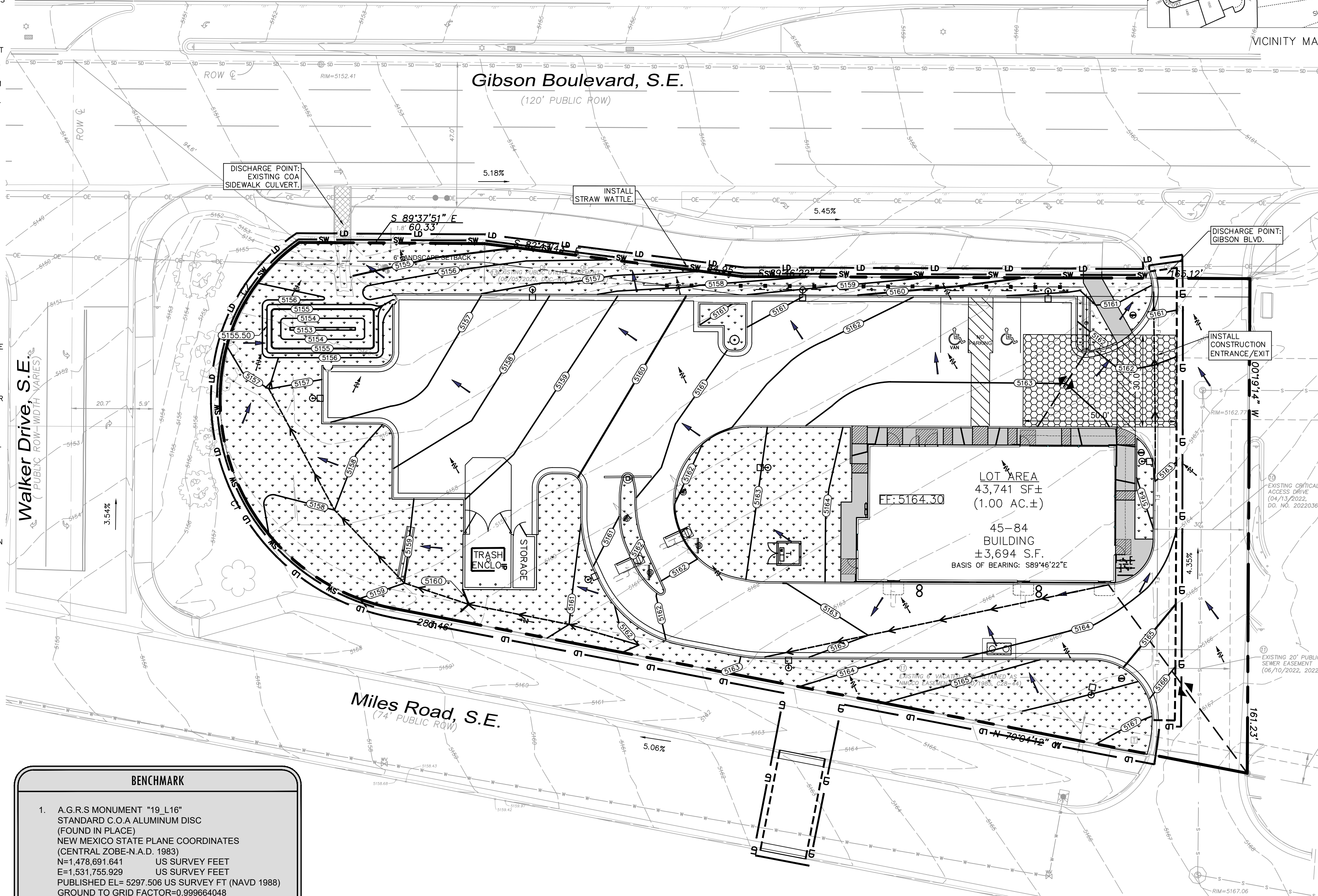
1. MINIMAL BEST MANAGEMENT PRACTICES FOR EROSION CONTROL HAVE BEEN SHOWN ON THIS PLAN. A SWPPP SHALL BE PREPARED FOR MCDONALD'S BY OTHERS AND ADMINISTERED BY OTHERS. LANGAN ENGINEERING RECOGNIZES STATE REQUIREMENTS FOR STORM WATER POLLUTION CONTROL BUT ASSUMES NO RESPONSIBILITY FOR A SWPPP ON THIS PROJECT.
2. ALL BMPs SHALL CONFORM TO THE CITY OF ALBUQUERQUE STANDARDS.
3. EXISTING SITE IS A PARKING LOT WITH 74% IMPERVIOUS COVER.



ACREAGE SUMMARY	
TOTAL SITE	1.00 AC
TOTAL DISTURBED	±1.00 AC
WEIGHTED PRE-CONSTRUCTION RUNOFF COEFFICIENT ( $C_p$ )	0.74
WEIGHTED POST-CONSTRUCTION RUNOFF COEFFICIENT ( $C_w$ )	0.73
POST AREA ROOFED OR PAVED	0.71 AC
POST AREA LANDSCAPED	0.29 AC

ALL DISTURBED AREAS SHALL BE WATERED, FERTILIZED, AND SEEDED OR SODDED AS NECESSARY AND BY DEFINITION 'MAINTAINED' UNTIL AN ESTABLISHED STAND OF GRASS CAN BE RELEASED TO THE OWNER. REFERENCE LANDSCAPE/IRRIGATION PLAN TO COORDINATE PLANTING ENHANCEMENTS AND LIMITS OF IRRIGATION COVERAGE.

**NOTE:**  
NO WORK SHALL BE PERFORMED  
IN THE PUBLIC R.O.W. WITHOUT  
AN APPROVED WORK ORDER OR  
EXCAVATION PERMIT,

VICINITY MAP (ZONE ATLAS M-15-Z)  
N.T.S

1. A.G.R.S MONUMENT "19\_L16"  
STANDARD C.O.A ALUMINUM DISC  
(FOUND IN PLACE)  
NEW MEXICO STATE PLANE COORDINATES  
(CENTRAL ZOBE-N.A.D. 1983)  
N=1,478,691.641 US SURVEY FEET  
E=1,531,755.929 US SURVEY FEET  
PUBLISHED EL= 5297.506 US SURVEY FT (NAVD 1988)  
GROUND TO GRID FACTOR=0.999964048  
DELTA ALPHA ANGLE=N-12°31'00"

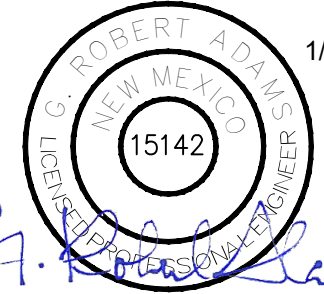
THE CONTRACTOR IS SPECIFICALLY CAUTIONED THAT THE LOCATION AND/OR ELEVATION OF EXISTING UTILITIES AS SHOWN ON THESE PLANS IS BASED UPON RECORD OF THE VARIOUS UTILITY COMPANIES AND, WHERE POSSIBLE, ACTUAL MEASUREMENTS TAKEN IN THE FIELD. THE INFORMATION PROVIDED HEREON IS NOT TO BE TAKEN AS A GUARANTEE OR WARRANTY. THE CONTRACTOR MUST OBTAIN THE APPROPRIATE UTILITY COMPANY'S LATEST HOUR'S BEFORE ANY EXCAVATION TO REQUEST EXACT FIELD LOCATION OF ALL EXISTING UTILITIES. IT SHALL BE THE RESPONSIBILITY OF THE CONTRACTOR TO RELOCATE ALL EXISTING UTILITIES WHICH CONFLICT WITH THE PROPOSED IMPROVEMENTS AS SHOWN.

THE CONTRACTOR SHALL NOTE ON SITE PLAN THE LOCATION OF ALL MATERIAL STORAGE AREAS, EQUIPMENT STORAGE AREAS, PETROLEUM TANKS, SOLID WASTE RECEPTACLES, SANITARY FACILITIES, CONCRETE WASHOUT AREAS, ANY ON-SITE OR OFF-SITE BORROW OR STOCKPILE AREA, ANY ON-SITE OR OFF-SITE SUPPORT ACTIVITIES (SUCH AS ASPHALT OR CONCRETE PLANTS). CONTRACTOR SHALL ALSO PREPARE, KEEP ON SITE, AND MAINTAIN CURRENT A LIST OF MATERIALS WITH APPROXIMATE QUANTITIES, WHICH ARE STORED ON SITE.



Know what's **below**.  
Call before you dig.

These drawings and specifications are the confidential and proprietary property of McDonald's USA, LLC and shall not be copied or reproduced without its written authorization. The contract documents were prepared for use on this specific site in conjunction with its issue date and are not suitable for use on a different site or at a later time. Use of these drawings for reference or example on another project requires the services of properly licensed architects and engineers. Reproduction of the contract documents for reuse on another project is not authorized.



Langan Engineering and  
Environmental Services, LLC.

2999 Olympus Blvd, Suite 165  
Dallas, TX 75019

T: 817.328.3200

www.langan.com

Project

McDONALD'S NEW RESTAURANT  
L/C #030-0274 / NSN 43752  
2000 GIBSON BLVD. SE  
ALBUQUERQUE

BERNALILLO COUNTY

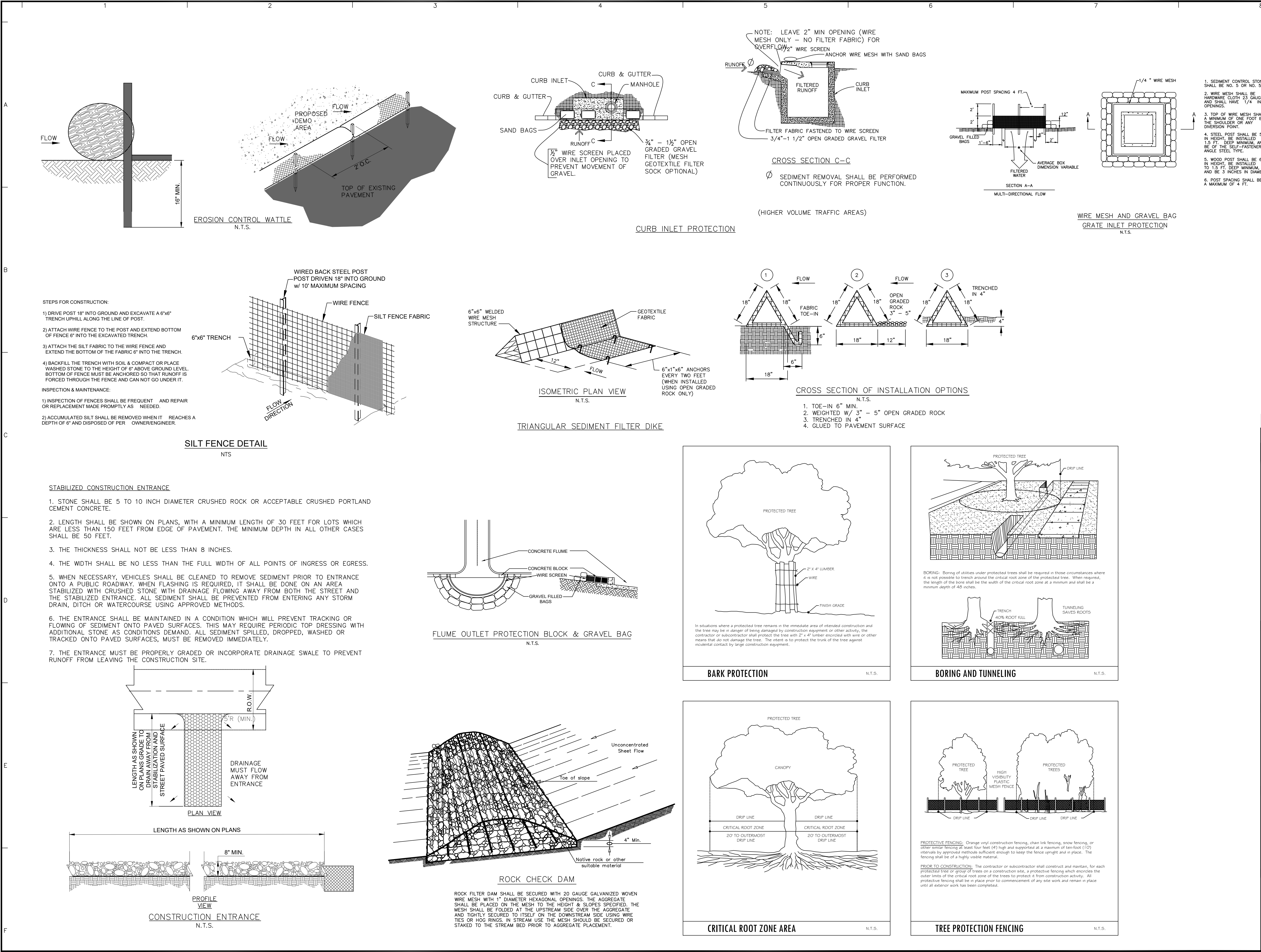
NEW MEXICO

Drawing Title

# EROSION CONTROL PLAN

Project No.	<div style="text-align: center;"> <h1>C3.0</h1> </div>
520088901	
Date	
JANUARY 2025	
Drawn By	
MNK	
Checked By	
HJM	





Date	Description	No.
Revisions		
<div><div><div><div><div><span></span></div><div>McDonald's USA, LLC</div></div><div><div><div><div><div><span></span></div><div>These drawings and specifications are the confidential and proprietary property of McDonald's USA, LLC and shall not be copied or reproduced without written authorization. The contract documents were prepared for use on this specific site in conjunction with its issue date and are not suitable for use on a different site or at a later time. Use of these drawings for reference or example on another project requires the services of properly licensed architects and engineers. Reproduction of the contract documents for reuse on another project is not authorized.</div></div></div></div></div></div></div></div>		
<div><div><div><div><div><span></span></div><div>1/10/25</div></div><div><div><div><div><span></span></div><div>15142</div></div><div><div><div><div><span></span></div><div>G. R. [Signature]</div></div></div></div></div></div></div></div></div>		
<div><div><div><div><div><span></span></div><div>LANGAN</div></div><div><div><div><div><span></span></div><div>Langan Engineering and Environmental Services, LLC.</div></div><div><div><div><div><span></span></div><div>2999 Olympus Blvd, Suite 165</div></div><div><div><div><div><span></span></div><div>Dallas, TX 75019</div></div></div></div></div></div></div></div></div></div></div>		
T: 817.328.3200www.langan.com		
Project		
McDONALD'S NEW RESTAURANT L/C #030-0274 / NSN 43752 2000 GIBSON BLVD. SE ALBUQUERQUE		
BERNALILLO COUNTYNEW MEXICO		
Drawing Title		
EROSION CONTROL DETAILS		
Project No.	Drawing No.	
520088901	C3.1	
Date	JANUARY 2025	
Drawn By	MNK	
Checked By	HJM	