

LANDSCAPE PROJECT NOTES

Refer to Sitework Specifications for all information needed for landscape work.

Notify Landscape Architect or designated representative of any layout discrepancies or any condition which may prohibit the installation as shown.

Verify and locate all utilities and site lighting conduits before landscape construction begins. Protection of all utilities is the responsibility of the Contractor.

All planting areas illustrated shall be graded smooth with three inches (3") of topsoil and three inches (3") of compost applied and consistently blended (tilled) to a depth of nine inches (9"). If adequate or sufficient topsoil is not available on site, the Contractor shall provide topsoil per the specifications and approved by the Owner. To obtain final grade, excavation may be necessary to accept the required depth of topsoil/compost mix with surface dressing or mulch. All beds shall be crowned to anticipate settlement and ensure drainage without disrupting surrounding planned drainage paths. Any areas disturbed for any reason prior to final acceptance of the project shall be corrected by the Contractor at no additional expense to the Owner.

All landscaped areas will be irrigated with an underground automatic system.

Quantities shown on these plans are for reference only. Plant spacing is as indicated in the Plant Material List unless otherwise noted. The Contractor has full responsibility to provide coverage in all planting areas as specified.

All trees and shrubs shall be installed per planting details.

Trees shall be planted at least five feet (5') from any utility line or sidewalk, to the outside of utility easements with a clear ten feet (10') around fire hydrants and twenty feet (20') min. from all irrigation control zone meter boxes, etc. Furthermore, planting within areas of turf shall give priority of location to irrigation. Trees, shall not be planted within five feet (5') of a spray head or ten feet (10') of a rotor. Remaining irrigation components shall respect the location of the illustrated landscape design. Shrubs, regardless of type, shall not be planted within thirty inches (30") of bed perimeters.

All plant material shall be maintained in a healthy and growing condition, and must be replaced with similar variety and size if damaged or removed. Container grown plant material is preferred, however ball and burlap material may be substituted as indicated in the plant material list.

Steel edging adjacent to decorative rock beds shall have a 1/4" min. thickness. Terminate edging flush with paved surface with no sharp corners exposed. Standard mill finish.

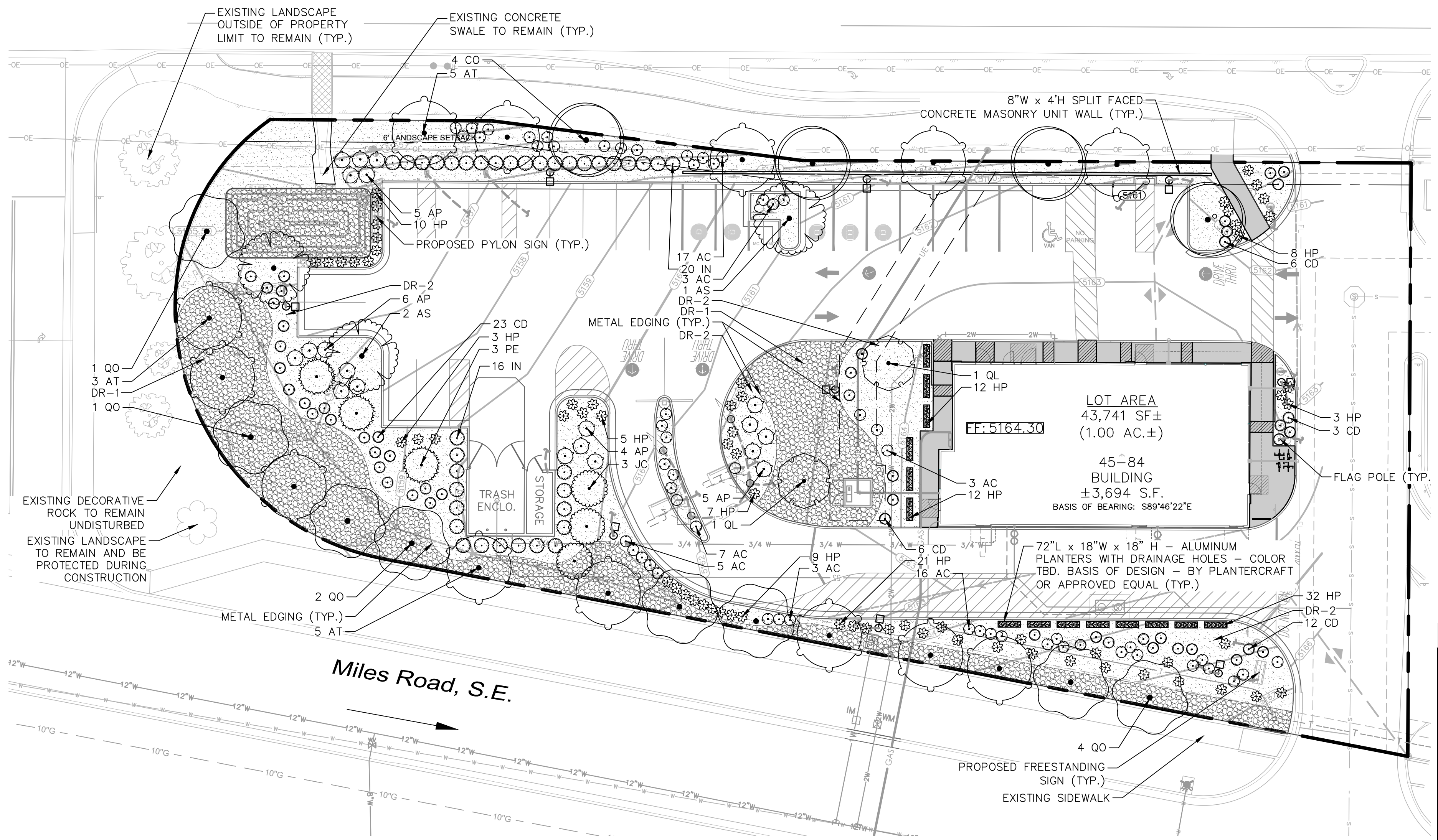
Fertilize all plants at the time of planting with 10-10-10 time release fertilizer.

All areas of decorative rock as designated shall be locally available and of an average diameter of two inches (2") minimum to four inches (4") maximum. Contractor shall install to a depth of three inches (4"). Rock should be compacted and stable under foot when applied in a pedestrian area.



ORDINANCE SECTION	DESCRIPTION	REQUIRED/PROVIDED	COMPLIANCE
5-6(C)(2)(a)	Except as noted in Subsection (b) below, a minimum of 15 percent of the net lot area of each development shall contain landscaping.	REQUIRED: 43,711 * 0.15 = 6,561 SF min. landscaped areas PROVIDED: 12,182 SF landscape areas	COMPLIES
5-6(C)(2)(c)	The mature realistic spread of trees and shrubs will be used to calculate required vegetative coverage as follows. 1. Tree canopies and ground-level plants shall cover a minimum of 75 percent of the total landscape area as measured by canopy width or the area beneath the dripline of the mature size of the actual vegetation. (See figure below.)	REQUIRED: 6,561 SF * 0.75 = 4,920.75 SF vegetative coverage PROVIDED: 7,504 SF	COMPLIES
5-6(C)(2)(c)	2. Of the required vegetative coverage, a minimum of 25 percent shall be provided as ground-level plants (shrubs, grasses, etc.) as measured of the mature size of the actual vegetation. (See figure below.)	REQUIRED: 4,920.75 * 0.25 = 1,230.18 SF ground-level plants PROVIDED: 1,336 SF	COMPLIES
5-6(C)(4)(a)	A minimum of 10 species must be used in the landscaped area.	REQUIRED: 10 species PROVIDED: 14 species	COMPLIES
5-6(C)(4)(k)	Shade trees planted approximately 25 feet on-center are required along all required pedestrian walkways. If the walkway is less than 25 feet long, at least one tree is required, or, where there is insufficient space for a tree, a trellis of at least 8 feet high for at least 5 feet along the walkway shall be provided.	REQUIRED: 323' walkway / 25' walkway = 16.92 trees PROVIDED: 17 trees	COMPLIES
5-6(F)(2)(c)	1. One (1) tree is required per 10 parking spaces. 2. No parking space may be more than 100 feet in any direction from a tree trunk. 3. At least 75 percent of the required parking area trees shall be deciduous canopy-type shade trees, capable of achieving a mature canopy diameter of at least 25 feet.	REQUIRED: 26 spaces / 10 spaces = 2.6 trees PROVIDED: 3 trees	COMPLIES
5-11(E)(2)(b)	Raised planters between 12 inches and 28 inches above grade with the surface planted to achieve at least 75% vegetative cover at maturity, at least 30% of the length of each street facing facade	REQUIRED: 30% of Total LF of frontage = 77.2 LF PROVIDED: 78 LF (13 planters - 72"x18"x18" HT)	COMPLIES

Gibson Boulevard, S.E.



PLANT SCHEDULE

SYMBOL	KEY	QTY	BOTANICAL / COMMON NAME	SIZE	ROOT
TREES					
AT	13	ACER TATARICUM / TATARIAN MAPLE	2" CAL.	B&B	
AS	3	ACER TRUNCATUM / SHANTUNG MAPLE	2" CAL.	B&B	
CO	4	CERCIS CANADENSIS TEXENSIS 'OKLAHOMA' / OKLAHOMA TEXAS REDBUD	2" CAL.	B&B	
JC	3	JUNIPERUS CHINENSIS / JUNIPER	6' HT.	B&B	
PE	3	PINUS ELDARICA / AFGHAN PINE	6' HT.	B&B	
QL	2	QUERCUS LOBATA / VALLEY OAK	2" CAL.	B&B	
QO	8	QUERCUS OBLONGIFOLIA / MEXICAN BLUE OAK	2" CAL.	B&B	
SHRUBS					
AC	54	ABELIA X GRANDIFLORA 'COMPACTA' / COMPACT GLOSSY ABELIA	5 GAL.	CONTAINER	
AP	20	ARTEMISIA X 'POWIS CASTLE' / POWIS CASTLE ARTEMISIA	5 GAL.	CONTAINER	
CD	50	CARYOPTERIS X CLANDONENSIS 'DARK KNIGHT' / DARK KNIGHT BLUEBEARD	5 GAL.	CONTAINER	
HP	56	HESPERALOE PARVIFLORA / RED YUCCA	1 GAL.	CONTAINER	
HP	66	HESPERALOE PARVIFLORA / RED YUCCA	3 GAL.	CONTAINER	
IN	36	ILEX VOMITORIA 'NANA' / DWARF YAUPON HOLLY	5 GAL.	CONTAINER	
DECORATIVE ROCK					
		DECORATIVE ROCK--TYPE 1 (2"-4" DIAMETER)			
		DECORATIVE ROCK--TYPE 2 (3/4" DIAMETER)			

NOTE: DECORATIVE ROCK AS PER THE CITY OF ALBUQUERQUE STANDARDS AND SPECIFICATIONS. CONTRACTOR TO SUBMIT SAMPLES FOR REVIEW PRIOR TO INSTALLATION.

McDonald's

SCALE: 1" = 20'

Date Description No.

Revisions

McDonald's USA, LLC

These drawings and specifications are the confidential and proprietary property of McDonald's USA, LLC and shall not be copied or reproduced without written authorization. The contract documents were prepared for use on this specific site in conjunction with its issue date and are not suitable for use on a different site or at a later time. Use of these drawings for reference or example on another project requires the services of properly licensed architects and engineers. Reproduction of the contract documents for reuse on another project is not authorized.

STATE OF NEW MEXICO

BEN R. HENRY

394

LANDREGISTERED ARCHITECT

06-05-2025

LANGAN

Langan Engineering and Environmental Services, LLC.

2999 Olympus Blvd, Suite 165

Dallas, TX 75019

T: 817.328.3200

www.langan.com

Project

McDONALD'S NEW RESTAURANT

L/C #030-0274 / NSN 43752

2000 GIBSON BLVD. SE

ALBUQUERQUE

BERNALILLO COUNTY NEW MEXICO

Drawing Title

Project No. 520088901

Drawing No. L1.0

Date 05/30/2025

Drawn By PR/SH/DH

Checked By HH/BH

Sheet 24 of 27