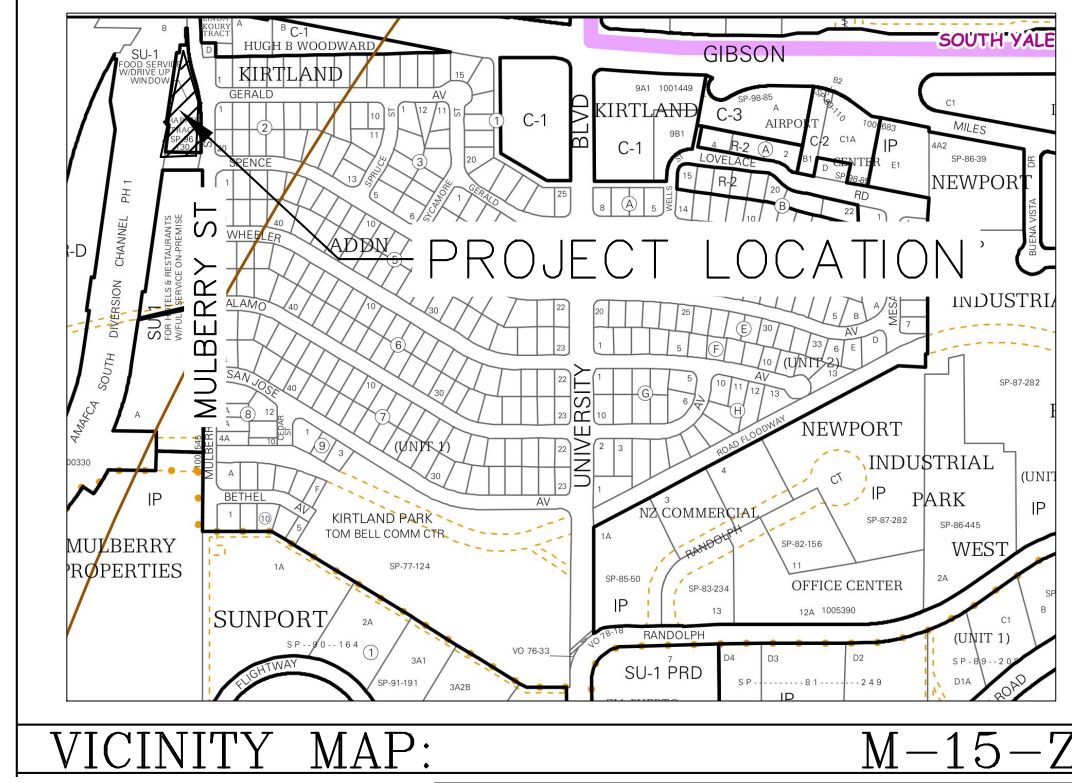

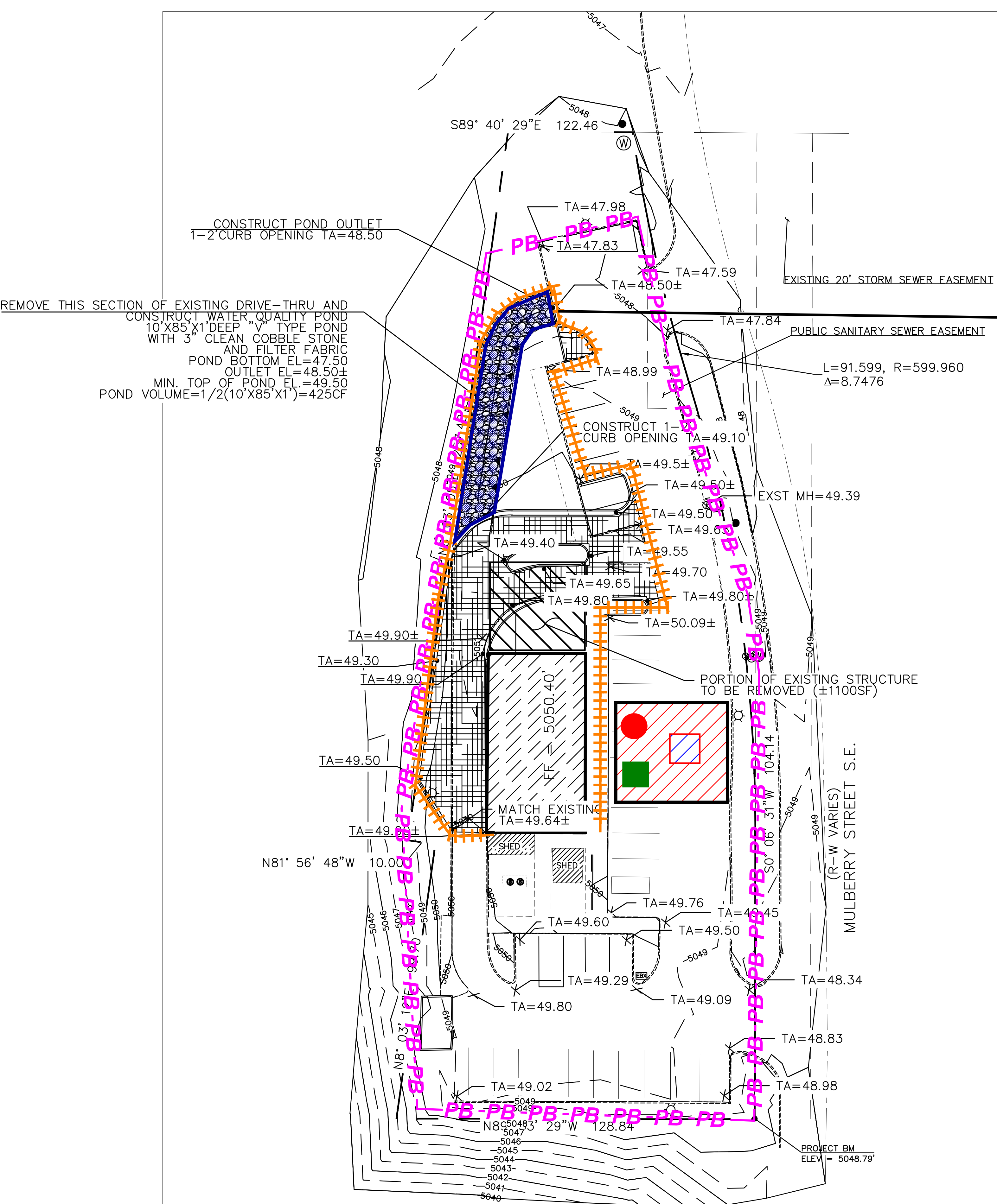
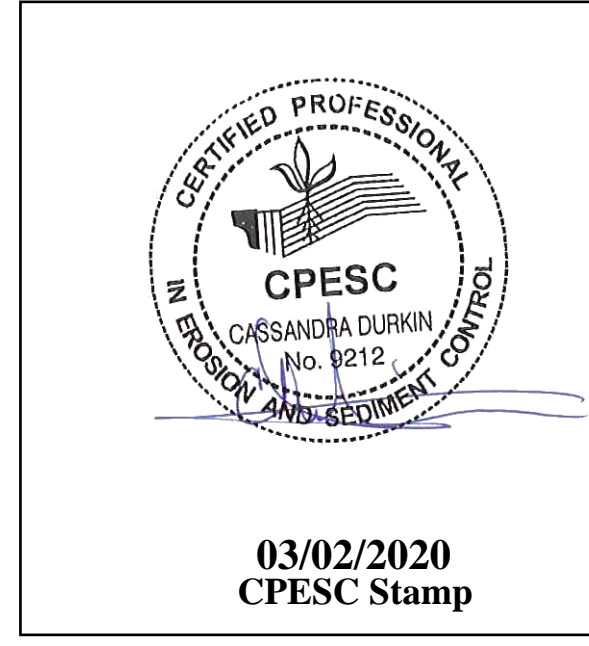


**SITE WILL HAVE MULCH SOCKS PLACED
AROUND ALL DISTURBED AREAS. NO SEDIMENT
SHALL BE ALLOWED TO LEAVE THE SITE OR
FALL INTO ARROYO**

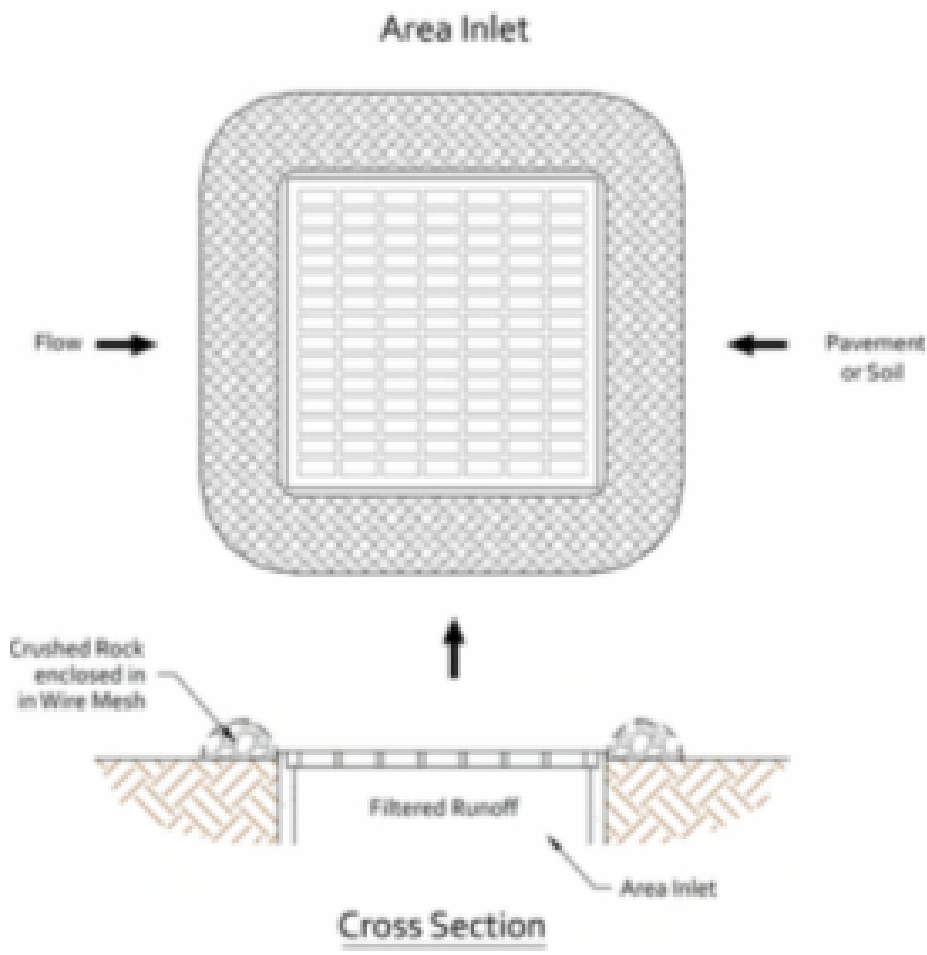


RECEIVING WATERS:	RIO GRANDE VIA ALBUQUERQUE MS4; TIER II AND IMPAIRED WITH DISSOLVED OXYGEN, PCBs, AND E. COLI
CRITICAL HABITAT:	CRITERION "A"; NO CRITICAL HABITATS WITHIN PROJECT AREA
GPS LOCATION:	RIO GRANDE VIA ALBUQUERQUE MS4; TIER II AND IMPAIRED WITH DISSOLVED OXYGEN, PCBs, AND E. COLI

BURGER KING		PROJECT TITLE
ALBUQUERQUE, BERNALILLO COUNTY, NM		
CITY, COUNTY, STATE		
03/02/2020	DATE	 INSPECTIONS PLUS
C. DURKIN	DRAWN BY	



INLET PROTECTION



BMP Objectives

- Sediment Control
- Sheet Flow Runoff Control

SILT FENCE



BMP Objectives

- Sediment Control
- Sheet Flow Runoff Control
- Wind Erosion Control

SEDIMENT TRACK OUT CONTROL



BMP Objectives

- Sediment Control

MULCH SOCK/STRAW WATTLE



BMP Objectives

- Sediment Control
- Reduce Runoff Velocity
- Inlet Protection

BERMS AND SWALES




BMP Objectives

- Runoff Control
- Run-on Diversion

EROSION CONTROL NOTES

1. All perimeter erosion and sediment control measures shall be installed prior to the execution of any grading work and shall be maintained for the duration of the project. Failure to install and maintain erosion controls is a violation of the Federal Permit and is subject to fines.
2. All Erosion and Sediment Control (ESC) work on these plans, except as otherwise stated or provided hereon shall be permitted, constructed, inspected, and maintained in accordance with:
 - a. The City Ordinance § 14-5-2-11, the ESC Ordinance
 - b. The EPA's 2017 Construction General Permit (CGP), and
 - c. NMDOT's August 2012 BMP Manual, Appendix A
3. Sediment collected behind sediment filters and Silt Fences shall be removed when sediment reaches 1/3 the height of the barrier.
4. Routine Self-Inspections are required to review the project for compliance with the City Ordinance and the Construction General Permit according to the receiving water for the site. For sites that discharge to Sensitive Waters, inspection of erosion and sediment controls and other protective measures are required once every 7 and within 24 hours of Storm Events that produce 0.25 inches or more. All other sites must conduct Self-Inspections once every 14 days and within 24 hours of Storm Events that produce 0.25 inches or more. All inspections shall continue until the site construction has been completed and the site is determined stabilized by the City. Reports of these inspections shall be kept by the person or entity authorized to direct the construction activities on the site.
5. Erosion and Sediment control measures shall be removed following construction or upon permanent stabilization of the disturbed/graded areas, whichever occurs last.
6. All disturbed areas that are not to be paved shall be reseeded. Unless otherwise specified, Native Grass Seeding and mulch per COA STD 1012 is required for final stabilization prior to removal of BMPs and discontinuation of inspections.
7. The Contractor shall keep the site clean at all times and control dust resulting from earthwork operations. The Contractor shall not track mud or sediment from the site onto the public streets.

RECEIVING WATERS:	RIO GRANDE VIA ALBUQUERQUE MS4; TIER II AND IMPAIRED WITH DISSOLVED OXYGEN, PCBs, AND E. COLI		
CRITICAL HABITAT:	CRITERION "A"; NO CRITICAL HABITATS WITHIN PROJECT AREA		
GPS LOCATION:	RIO GRANDE VIA ALBUQUERQUE MS4; TIER II AND IMPAIRED WITH DISSOLVED OXYGEN, PCBs, AND E. COLI		
BURGER KING			
PROJECT TITLE			
ALBUQUERQUE, BERNALILLO COUNTY, NM			
CITY, COUNTY, STATE			
03/02/2020		DATE	 INSPECTIONS PLUS
C. DURKIN		DRAWN BY	

