

FIRE APPARATUS ACCESS ROADS NOTES:

- FIRE APPARATUS ACCESS ROADS SHALL HAVE AN ASPHALT, CONCRETE, OR OTHER APPROVED DRIVING SURFACE CAPABLE OF SUPPORTING THE IMPOSED LOAD OF FIRE APPARATUS WEIGHING AT LEAST 75,000 POUNDS.
- ENGINEERING DATA SHALL BE SUBMITTED TO SUBSTANTIATE WEIGHT BEARING CAPACITY AND ALL WEATHER DRIVING CAPABILITIES FOR FIRE APPARATUS ACCESS ROADS.
- FIRE APPARATUS ACCESS ROADS SHALL NOT EXCEED 10 PERCENT IN GRADE.

FIRE RISER ROOM NOTES:

- FIRE RISER ROOM WITH FIRE RISER, G.C. TO SUBMIT FIRE SPRINKLER PLANS TO THE FIRE MARSHAL'S OFFICE FOR REVIEW AND APPROVAL.
- G.C. TO PROVIDE AND INSTALL AT FIRE RISER ROOM DOOR SIGNAGE STATING "FIRE RISER ROOM".
- G.C. TO PROVIDE AND INSTALL RECESSED KNOX BOX WITH KEY FOR FIRE DEPARTMENT ACCESS INTO FIRE RISER ROOM, MOUNT BOX 5'-0" HIGH A.F.F.
- FIRE DEPARTMENT CONNECTION (FDC) LOCATION. NOTE: FDC LOCATION TO BE WITHIN 100 FEET OF FIRE HYDRANT.
- FIRE LANE, PAINT TOP AND SIDE OF CURB RED WITH "FIRE LANE" IN WHITE PAINT.

LIFE SAFETY GENERAL NOTES

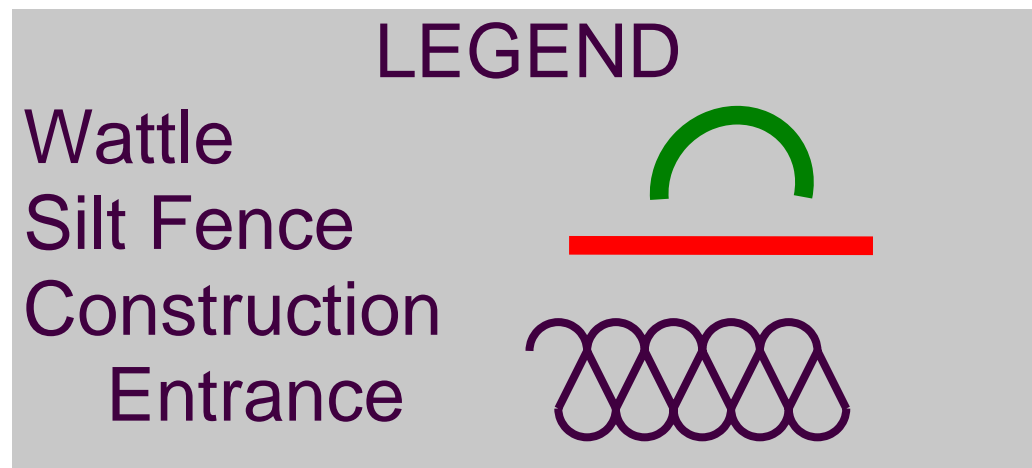
- A. PREMISE IDENTIFICATION - SHALL BE MINIMUM 12 INCHES HIGH x 1 INCH WIDE STROKE AND SHALL CONTRAST WITH THEIR BACKGROUND AND SHALL BE VISIBLE FROM THE STREET OR ROAD FRONTING THE PROPERTY
- B. G.C. TO PROVIDE FIRE EXTINGUISHERS 2A-10-BC, 1 PER EACH 3,000 S.F., REF: FLOOR PLANS FOR QUANTITY, LOCATIONS AND TYPE.
- C. ALL PENETRATIONS THROUGH A FIRE RATED WALL ASSEMBLY TO BE FIRESTOPPED WITH THERMAFIBER AS MANUFACTURED BY THERMAFIBER, LLC, WABASH, 46992 OR OTHER APPROVED EQUAL.
- D. ALL EXIT SIGNS AND EMERGENCY LIGHTING SHALL HAVE BATTERY BACK-UP, REF: ELECTRICAL.

APPLICABLE CODES

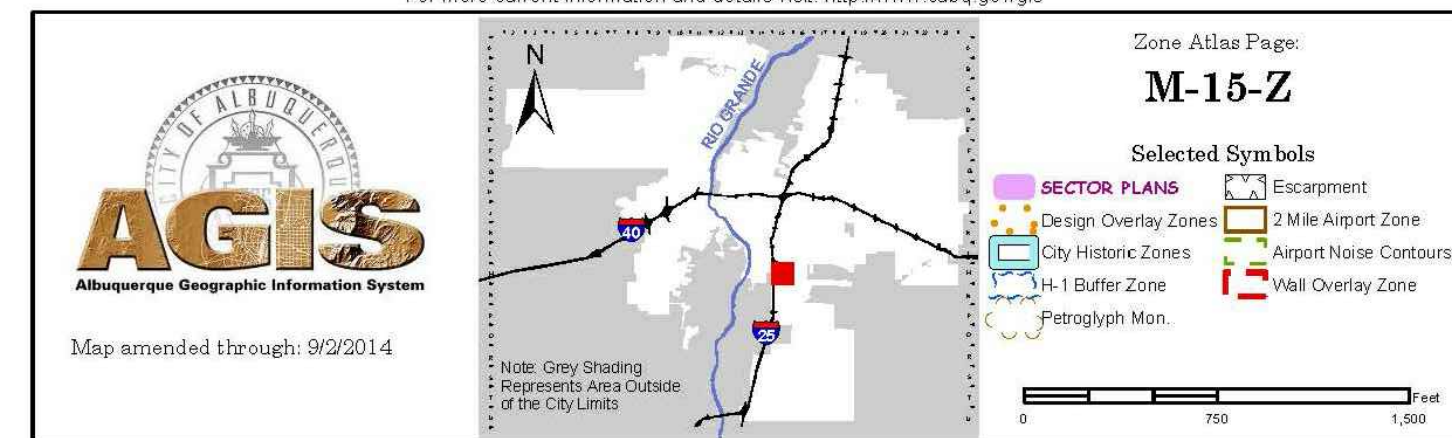
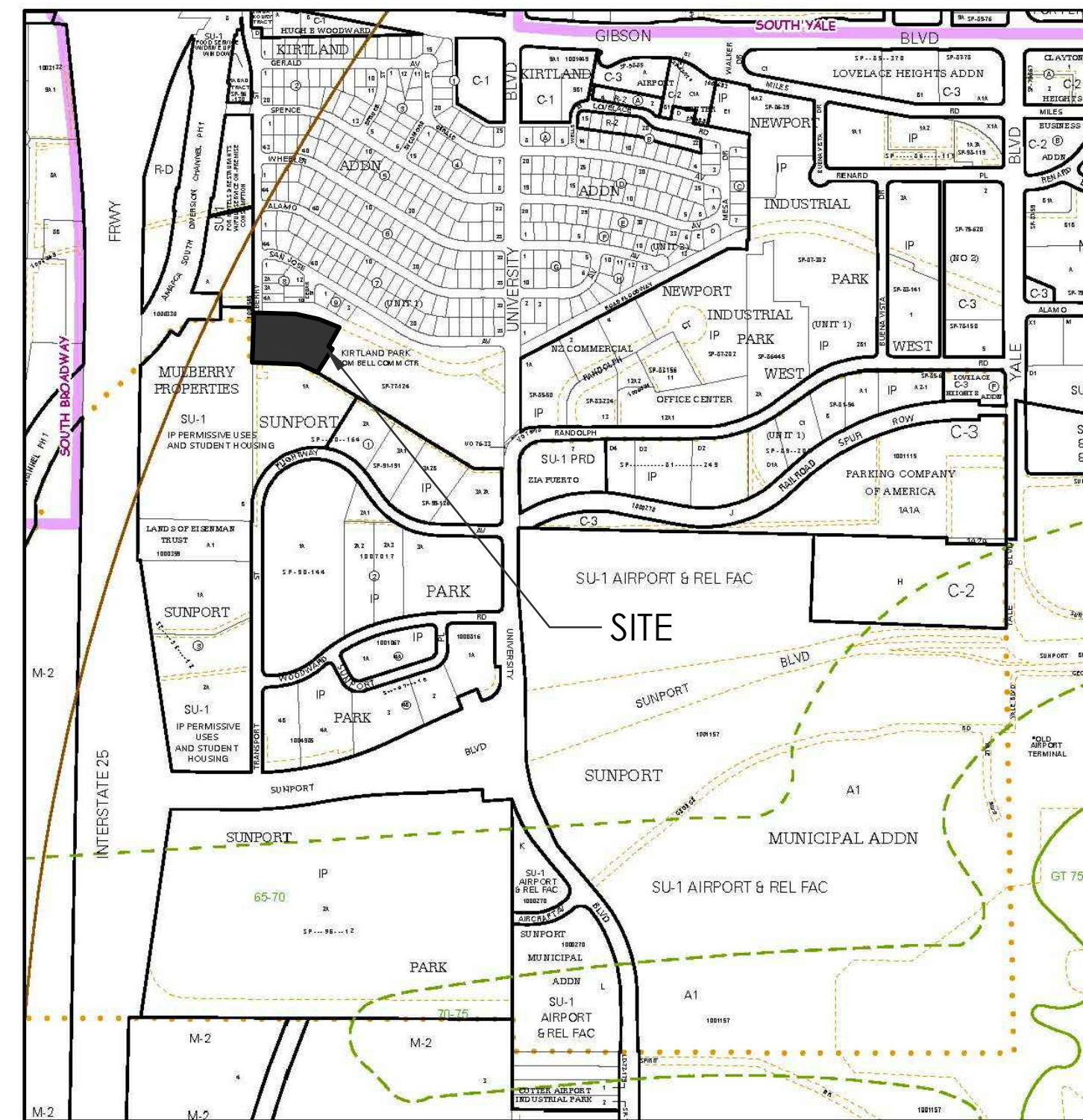
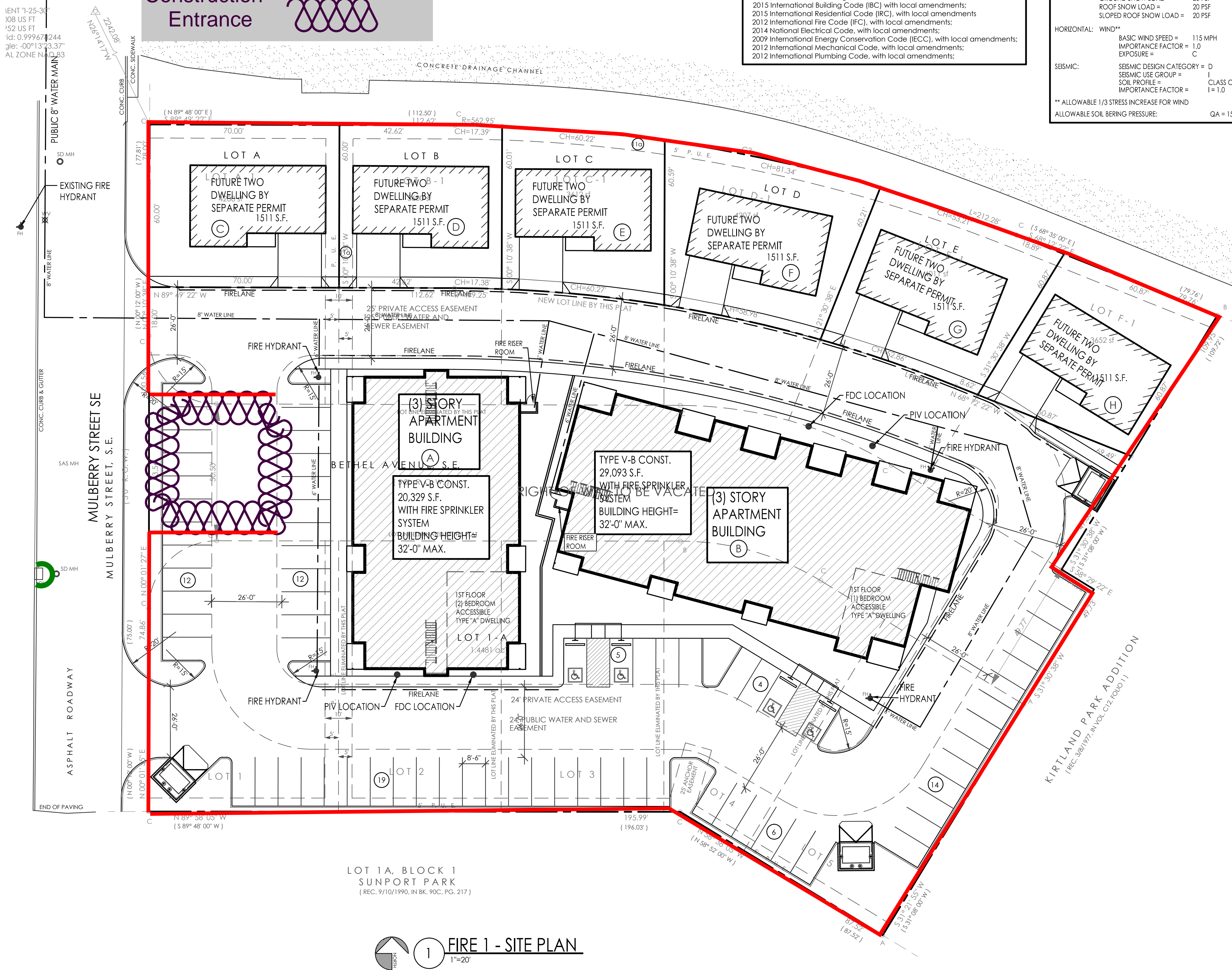
- 2015 New Mexico Commercial Building Code;
- 2012 New Mexico Electrical Code;
- 2009 State of New Mexico Energy Conservation Code;
- 2012 New Mexico Mechanical Code;
- 2012 New Mexico Plumbing Code;
- 2015 International Building Code (IBC) with local amendments;
- 2015 International Residential Code (IRC), with local amendments;
- 2012 International Fire Code (IFC), with local amendments;
- 2014 National Electrical Code, with local amendments;
- 2009 International Energy Conservation Code (IECC), with local amendments;
- 2012 International Mechanical Code, with local amendments;
- 2012 International Plumbing Code, with local amendments;

BUILDING DESIGN CRITERIA

- VERTICAL: LIVE LOAD
 - ROOF = 20 PSF
 - FLOOR = 40 PSF
- SNOW LOAD:
 - GROUND SNOW LOAD = 20 PSF
 - ROOF SNOW LOAD = 20 PSF
 - SLOPED ROOF SNOW LOAD = 20 PSF
- HORIZONTAL: WIND**
 - BASIC WIND SPEED = 115 MPH
 - IMPORTANCE FACTOR = 1.0
 - EXPOSURE = C
- SEISMIC:
 - SEISMIC DESIGN CATEGORY = D
 - SEISMIC USE GROUP = I
 - SOIL PROFILE = CLASS C
 - IMPORTANCE FACTOR = 1.0
- ** ALLOWABLE 1/3 STRESS INCREASE FOR WIND
- ALLOWABLE SOIL BEARING PRESSURE: QA = 1500 PSF



VENT 1'-25.35"
108 US FT
1d: 0.99967
gle: -00°13'23.37"
AL ZONE NAD83



2015 I.B.C. DESIGN DATA

CHAPTER 3 OCCUPANCY AND USE CLASSIFICATION:	SECTION 310.4 RESIDENTIAL GROUP R-2 (APARTMENTS)
CHAPTER 3 OCCUPANCY AND USE CLASSIFICATION:	310.4 RESIDENTIAL GROUP R-2 (APARTMENTS)
TABLE 504.4 ALLOWABLE NUMBER OF STORIES ABOVE GRADE:	3 STORIES WITH (S) SPRINKLER SYSTEM.
TABLE 506.2 ALLOWABLE AREA FACTOR:	GROUP R-2, V-B = (SM) 21,000 S.F. WITH FIRE PROTECTION PER 903.3.1.1
BUILDING AREAS	
TOTAL BUILDING "A" HEATED AND COVERED AREA:	20,345 S.F. ALLOWABLE S.F. = 21,000 S.F.
TOTAL BUILDING "B" HEATED AND COVERED AREA:	29,135 S.F. ALLOWABLE S.F. = 21,000 S.F. BLDG. TO HAVE A (2) HOUR BLDG. HORIZONTAL SEPARATION.
TOTAL BUILDING AREA:	49,470 S.F. NOTE: REFER TO ARCH PLANS FOR LOCATION OF (2) HOUR BLDG. HORIZONTAL SEPARATION
SECTION 903 AUTOMATIC SPRINKLER SYSTEM:	PER SECTION 903.2.8 AN AUTOMATIC SPRINKLER SYSTEM INSTALLED IN ACCORDANCE WITH SECTION 903.3 SHALL PROVIDED THROUGHOUT ALL BUILDINGS WITH A GROUP R FIRE AREA SECTION 903.3.1.2 NFPA 13R SPRINKLER SYSTEM. WHERE THE PROVISIONS OF THIS CODE REQUIRE THAT A BUILDING OR PORTION THEREOF BE EQUIPPED THROUGHOUT WITH AN AUTOMATIC SPRINKLER SYSTEM IN ACCORDANCE WITH THIS SECTION.
SECTION 907 FIRE ALARM AND DETECTION SYSTEMS:	907.2.9 GROUP R-2 FIRE ALARM SYSTEMS AND SMOKE ALARMS SHALL BE INSTALLED GROUP R-2 OCCUPANCIES AS REQUIRED IN SECTION 907.2.9.1 AND 907.2.9.2
TABLE 601 FIRE-RESISTANCE RATING REQUIREMENTS FOR BUILDING ELEMENTS (HOURS):	TYPE V-B: PRIMARY STRUCTURAL FRAME, EXTERIOR AND INTERIOR BEARING WALLS: 0 HOUR FIRE-RESISTANCE RATING REQUIRED.
TABLE 602 FIRE-RESISTANCE RATING REQUIREMENTS FOR EXTERIOR WALLS BASED ON FIRE SEPARATION DISTANCE:	FIRE SEPARATION DISTANCE = 5'-0" < 10' TYPE OF CONSTRUCTION = ALL OCCUPANCY GROUP(S) = A, B, E, F-2, I, R, S-2, U = (1) HOUR FIRE-RESISTANCE RATING REQUIRED NOTE: APARTMENT EXTERIOR WALLS AT BREEZEWAY/CORRIDOR TO BE (1) HOUR FIRE RATED.
SECTION 705 EXTERIOR WALLS:	705.5 FIRE-RESISTANCE RATING, EXTERIOR WALLS SHALL BE FIRE-RESISTANCE RATED ACCORDANCE WITH TABLE 601 AND 602 AND THIS SECTION. PER SECTION 705.5, THE REQUIRED FIRE-RESISTANCE RATING OF EXTERIOR WALL WITH A FIRE SEPARATION DISTANCE OF LESS THAN 10 FEET SHALL BE RATED FOR EXPOSURE TO FIRE ON BOTH SIDES.
SECTION 420 GROUPS 1-1, R-1, R-2 AND R-3:	420.2 SEPARATION WALLS, WALLS SEPARATING DWELLING UNITS AND WALLS SEPARATING SLEEPING UNITS IN THE SAME BUILDING AND WALLS SEPARATING DWELLING OR SLEEPING UNITS FROM OTHER OCCUPANCIES CONTIGUOUS TO THEM IN THE SAME BUILDING SHALL BE CONSTRUCTED AS FIRE PARTITIONS IN ACCORDANCE WITH SECTION 708.
SECTION 711.2.4.6 OTHER SEPARATIONS:	420.3 HORIZONTAL SEPARATION, FLOOR ASSEMBLIES SEPARATING DWELLING UNITS IN THE SAME BUILDINGS, FLOOR ASSEMBLIES SEPARATING SLEEPING UNIT IN THE SAME BUILDING AND FLOOR ASSEMBLIES SEPARATING DWELLING OR SLEEPING UNITS FROM OTHER OCCUPANCIES SHALL BE CONSTRUCTED AS HORIZONTAL ASSEMBLIES IN ACCORDANCE WITH SECTION 711.
SECTION 420 GROUPS 1-1, R-1, R-2 AND R-3:	WHERE A HORIZONTAL ASSEMBLY IS REQUIRED BY OTHER SECTIONS OF THIS CODE, THE ASSEMBLY SHALL HAVE A FIRE-RESISTANCE RATING OF NOT LESS THAN THAT REQUIRED BY THAT SECTION.
SECTION 708 FIRE PARTITIONS:	420.2 SEPARATION WALLS, WALLS SEPARATING DWELLING UNITS AND WALLS SEPARATING SLEEPING UNITS IN THE SAME BUILDING AND WALLS SEPARATING DWELLING OR SLEEPING UNITS FROM OTHER OCCUPANCIES CONTIGUOUS TO THEM IN THE SAME BUILDING SHALL BE CONSTRUCTED AS FIRE PARTITIONS IN ACCORDANCE WITH SECTION 708.
	708.1 GENERAL, THE FOLLOWING WALL ASSEMBLIES SHALL COMPLY WITH THIS SECTION. 1. WALLS SEPARATING SLEEPING UNITS IN THE SAME BUILDING AS REQUIRED BY SECTION 420.2 3. CORRIDOR WALLS AS REQUIRED BY SECTION 1020.1.
	708.3 FIRE RESISTANCE RATING, FIRE PARTITION SHALL HAVE A FIRE-RESISTANCE RATING OF NOT LESS THAN 1 HOUR.
	708.4 CONTINUITY, FIRE PARTITIONS SHALL EXTEND FROM THE TOP THE FOUNDATION OR FLOOR/CEILING ASSEMBLY CEILING OR ROOF/CEILING ASSEMBLY BELOW TO THE UNDERSIDE OF THE FLOOR OR ROOF SHEATHING, SLAB OR DECK ABOVE OR TO THE FIRE-RESISTIVE-RATED FLOOR/CEILING OR ROOF/CEILING ASSEMBLY ABOVE, AND SHALL BE SECURELY ATTACHED THERETO.

SUNPORT APARTMENTS
FIRE 1 SITE PLAN
ALBUQUERQUE, NM
PROJECT #1844

REVISION DATE
12-05-2018



DATE
12-12-2018

SHEET NUMBER

FIRE 1