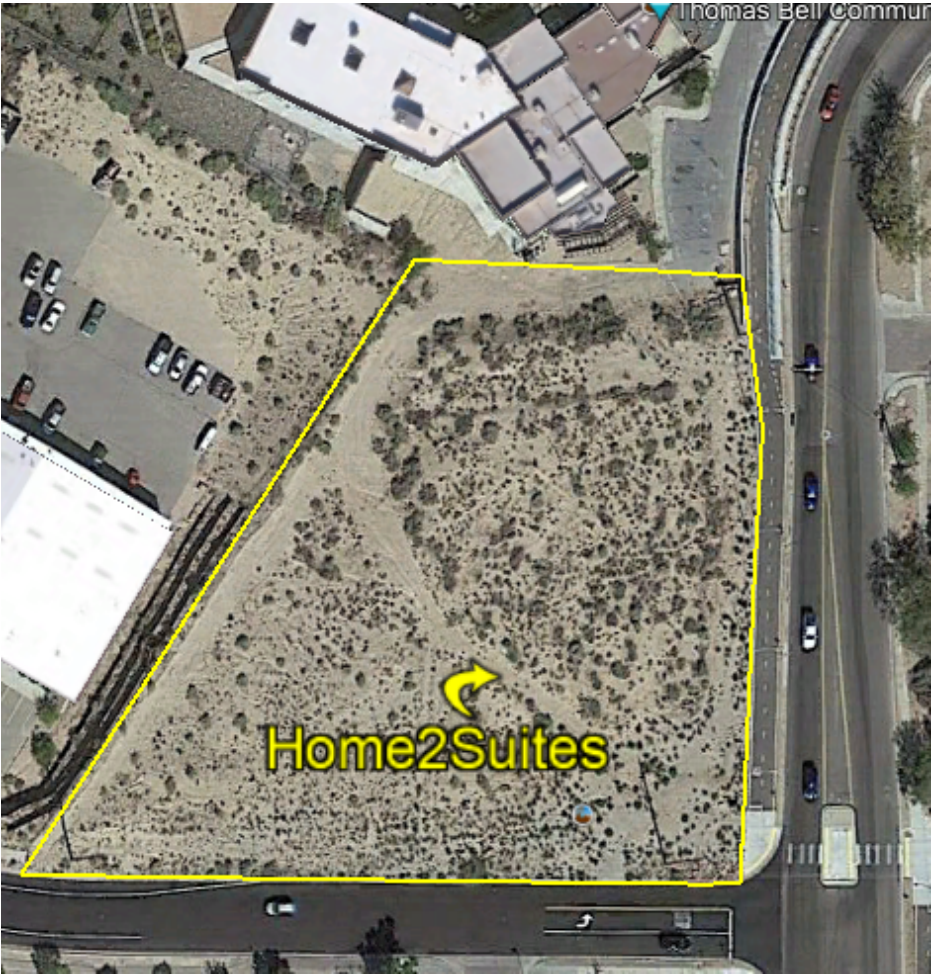


HOME 2 SUITES BY HILTON

3021 UNIVERSITY BLVD SE

TEMPORARY EROSION AND SEDIMENT CONTROL PLAN

PAGE INDEX	
1	TITLE PAGE
2	SWPPP INFO AND NOTES
3	DETAILS
4	TEMPORARY EROSION CONTROL PLAN





SCAN OR CLICK FOR DETAILED SITE INFORMATION



VIEW ONLY DOCUMENTS AND INSPECTIONS



GPS COORDINATES: 35.0516, -106.6313

<div><p>11/16/2021 CPESC Stamp</p></div>	HOME 2 SUITES BY HILTON		PROJECT TITLE
	ALBUQUERQUE, NM, BERNALILLO COUNTY		CITY, COUNTY, STATE
	11/16/2021	DATE	
	C. DURKIN	DRAWN BY	

STORMWATER POLLUTION PREVENTION PLAN INFORMATION

PERMIT NUMBER: NMR1004BI

NMR100000 STATE OF NEW MEXICO, EXCEPT INDIAN COUNTRY
NMR10I000 INDIAN COUNTRY WITHIN THE STATE OF NEW MEXICO, EXCEPT
NAVAJO RESERVATION LANDS THAT ARE COVERED UNDER ARIZONA
PERMIT AZR10I000 AND UTE MOUNTAIN RESERVATION LANDS THAT ARE
COVERED UNDER COLORADO PERMIT COR10I000.

OPERATOR NAME: ABQ AIRPORT LODGING, LLC.

OPERATOR POINT OF CONTACT: ANIL PATEL 505-870-6491

NOI PREPARED BY: INSPECTIONS PLUS

PROJECT/SITE NAME: HONE 2 SUITES BY HILTON

PROJECT/SITE ADDRESS: 3021 UNIVERSITY SE

LATITUDE	35.0516
LONGITUDE	-106.6313
ESTIMATED PROJECT START DATE	11/23/2021
ESTIMATED PROJECT COMPLETION DATE	02/03/2023
ESTIMATED AREA TO BE DISTURBED	2.0 ACRES
TYPE OF CONSTRUCTION	COMMERCIAL
DEMOLITION OF ANY STRUCTURES, 10,000 SQ FT OF GREATER BUILT OR RENOVATED BEFORE JANUARY 1, 1980?	NO
WAS THE PREDEVELOPMENT LAND USED FOR AGRICULTURE?	NO
COMMENCED EARTH DISTURBING ACTIVITIES?	NO
DISCHARGE TO MS4? MS4 NAME?	NO- ONSITE RETENSION
SURFACE WATERS WITHIN 50FT?	NO
RECEIVING WATER?	ONSITE WATER QUALITY POND
IS RECEIVING WATER IMPAIRED? TIER DESIGNATION	N/A
WHAT ARE THE IMPAIRMENTS, IF ANY?	N/A



SWPPP CONTACT INFORMATION: ANIL PATEL 505-870-6491

ENDANGERED SPECIES CRITERIA: CRITERION "A"; NO CRITICAL HABITATS WITHIN PROJECT AREA

HISTORIC PRESERVATION CRITERIA: CRITERION "A"; PREVIOUS SURVEYS

EROSION CONTOL NOTES
ESC Plan Standard Notes (2021-03-24)

- 1.All Erosion and Sediment Control (ESC) work on these plans, except as otherwise stated or provided hereon shall be permitted, constructed, inspected, and maintained in accordance with:
- a.The City Ordinance § 14-5-2-11, the ESC Ordinance,
b.The EPA's 2017 Construction General Permit (CGP), and
c.The City Of Albuquerque Construction BMP Manual.
- 2.All BMP's must be installed prior to beginning any earth moving activities except as specified hereon in the Phasing Plan. Construction of earthen BMP's such as sediment traps, sediment basins, and diversion berms shall be completed and inspected prior to any other construction or earthwork. Self-inspection is required after installation of the BMPs and prior to beginning construction.
- 3.Self-inspections - At a minimum a routine compliance self-inspection is required to review the project for compliance with the Construction General Permit once every 14 days and after any precipitation event of 1/4 inch or greater until the site construction has been completed and the site determined as stabilized by the city. Reports of these inspections shall be kept by the person or entity authorized to direct the construction activities on the site and made available upon request.
- 4.Corrective action reports must be kept by the person or entity authorized to direct the construction activities on the site and made available upon request.
- 5.Stabilization reports must be kept by the person or entity authorized to direct the construction activities on the site and made available upon request. Reports should include records of weed removal per City Ordinance (§ 9-8-1), sterilization, soil test results and recommendation, materials and manufacturer's specifications for application rates, estimated functional longevity, methods of application, inspection and maintenance. The reduced self-inspection schedule in CGP 4.4.1 applies to stabilized area and any damaged or worn stabilization must be identified in the reports along with weed problems. Corrective actions for stabilization shall be documented in a stabilization report including actual rates and dates of stabilization, and the materials and manufacturer's specifications used.
- 6.BMPs shall be inspected and maintained until all disturbed areas are stabilized in accordance with the Final Stabilization Criteria (CGP 2.2.14.b). Generally, all disturbed areas, other than structures and impervious surfaces, must have uniform perennial vegetation that provides 70 percent or more of the cover provided by native vegetation or seed the disturbed area and provide non-vegetative mulch that provides cover for at least three years without active maintenance. Final stabilization must be approved by the City of Albuquerque prior to removal of BMPs and discontinuation of inspections.

 11/16/2021 CPESC Stamp	HOME 2 SUITES BY HILTON <small>PROJECT TITLE</small>	
	ALBUQUERQUE, NM, BERNALILLO COUNTY <small>CITY, COUNTY, STATE</small>	
	11/16/2021 <small>DATE</small>	 INSPECTIONS PLUS
	C. DURKIN <small>DRAWN BY</small>	

SEDIMENT TRACK OUT CONTROL



BMP Objectives

- Sediment Control

SILT FENCE



BMP Objectives

- Sediment Control
- Sheet Flow Runoff Control
- Wind Erosion Control

BERMS AND SWALES



BMP Objectives

- Runoff Control
- Run-on Diversion

MULCH SOCK/STRAW WATTLE



BMP Objectives

- Sediment Control
- Reduce Runoff Velocity
- Inlet Protection

INLET PROTECTION



BMP Objectives

- Sediment Control
- Sheet Flow Runoff Control
- Wind Erosion Control

LEGEND

TEMPORARY EROSION AND SEDIMENT CONTROL PLAN

PP-PP-PP-

PROJECT PERIMETER

STAGING AREA

CHEMICAL TOILET

STORMWATER QUALITY POND

BW

BW

EXISTING BLOCK WALL

FLOW DIRECTION

CONCRETE WASHOUT

S

POSTING SIGN

SF-SF-SF-SF

SILT FENCE

STABILIZED CONTRUCTION ENTRANCE

DIVERSION SWALE

X

OUTFALL

DEBRIS CONTAINMENT

A circular professional seal for the Certified Professional Erosion and Sediment Control (CPESC) program. The seal features the text "CERTIFIED PROFESSIONAL", "CPESC", "CASSANDRA DURKIN", "No. 8212", and "IN EROSION AND SEDIMENT CONTROL".

11/16/2021
CPESC Stamp

HOME 2 SUITES BY HILTON

PROJECT TITLE

ALBUQUERQUE, NM, BERNALILLO COUNTY

CITY, COUNTY, STATE

11/16/2021

DATE

C. DURKIN

DRAWN BY

A logo for "INSPECTIONS PLUS" featuring a stylized "i" and "P" inside a square.

1. POST PERMITS
2. INSTALL REQUIRED BMPs
 - 2.a. PERIMETER CONTROLS
 - 2.b. STABILIZED CONSTRUCTION ENTRANCE
 - 2.c. CONCRETE WASHOUT AREA
3. TEMP POND
4. EARTHWORK AND GRADING
5. UTILITY INSTALLATION
6. PAVEMENT STRUCTURES
7. VERTICAL STRUCTURES
8. LANDSCAPING
9. PUNCHLIST

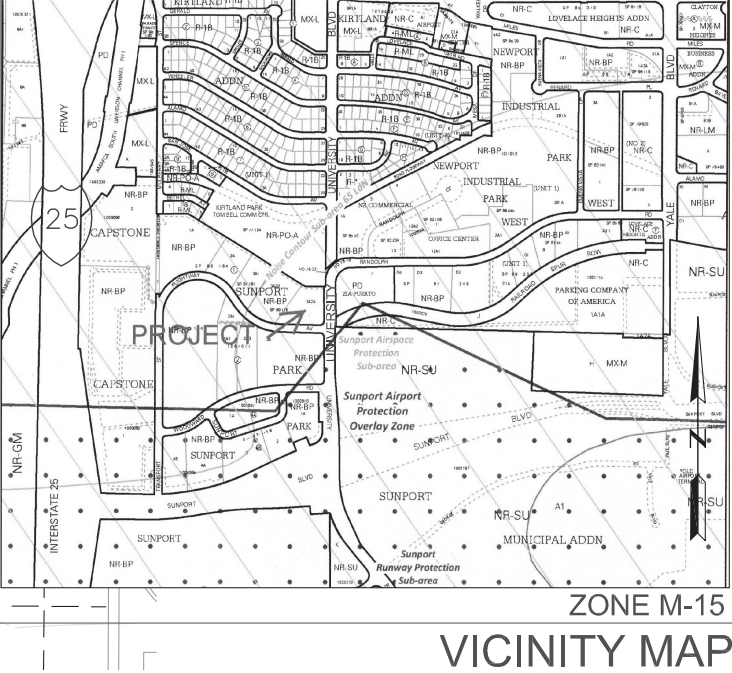
ABQ AIRPORT LODGING, LLC
ANIL PATEL 505-870-6491

REEVA, INC.
ANIL PATEL 505-870-6491


A: REMOVE SEDIMENT FROM ADJACENT STREETS: INSPECTIONS PLUS

B: BMP MAINTENANCE: INSPECTIONS PLUS

C. SITE INSPECTIONS: INSPECTIONS PLUS



SITE WILL HAVE A PERIMETER SILT FENCE WITH ADDITIONAL MULCH SOCKS ON THE WEST SIDE DOWNHILL SIDE. ALL ACTIVE INLETS AND OUTFALLS SHALL BE PROTECTED DURING CONSTRUCTION. STAGING AREA IS REPRESENTATIVE AND MAY BE MOVED TO ACCOMMODATE PROJECT.

 <p>11/16/2021 CPESC Stamp</p>	<p align="center">HOME 2 SUITES BY HILTON</p> <p align="right">PROJECT TITLE</p>	
	<p align="center">ALBUQUERQUE, NM, BERNALILLO COUNTY</p> <p align="right">CITY, COUNTY, STATE</p>	
	<p align="center">11/16/2021</p>	<p align="right">DATE</p>
<p align="center">C. DURKIN</p>		<p align="right">DRAWN BY</p>