

<p>B.C. SECTION 310.4 RESIDENTIAL GROUP R-2  RESIDENTIAL GROUP R-2 OCCUPANCIES CONTAINING SLEEPING UNITS OR MORE THAN TWO DWELLING UNITS WHERE THE OCCUPANTS ARE PRIMARILY PERMANENT IN NATURE, INCLUDING:  APARTMENT HOUSES  BOARDING HOUSES (NON-TRANSIENT) WITH MORE THAN 16 OCCUPANTS  CONGREGATE LIVING FACILITIES (NON-TRANSIENT) WITH MORE THAN 16 OCCUPANTS  CONVENTS  DORMITORIES  FRATERNITIES AND SORORITIES</p>																																																							
CHAPTER 3 OCCUPANCY AND USE CLASSIFICATION:	SECTION 303 GROUP B (OFFICE), GROUP R-2 (SLEEPING ROOMS)																																																						
TABLE 504.3 ALLOWABLE HEIGHT:	GROUP B WITH FIRE PROTECTION SYSTEM (S), TYPE V-A, 70 FEET GROUP R-2 WITH FIRE PROTECTION SYSTEM (S), TYPE V-A, 50 FEET																																																						
TABLE 504.4 ALLOWABLE NUMBER OF STORIES:	GROUP B WITH FIRE PROTECTION SYSTEM (S), TYPE V-A, 4 STORIES GROUP R-2 WITH FIRE PROTECTION SYSTEM (S), TYPE V-A, 5 STORIES																																																						
TABLE 506.2 ALLOWABLE AREA FACTOR IN S.F.:	GROUP B WITH FIRE PROTECTION SYSTEM (SM), TYPE V-A, 54,000 S.F. GROUP R-2 WITH FIRE PROTECTION SYSTEM (SM), TYPE V-A, 36,000 S.F.																																																						
TABLE 508.4 REQUIRED SEPARATION OF OCCUPANCIES:																																																							
1st FLOOR HEATED AREA:	10,072 S.F. (GROSS AREA)																																																						
2nd FLOOR HEATED AREA:	9,889 S.F. (GROSS AREA)																																																						
TOTAL HEATED AREA:	19,961 S.F. (GROSS AREA)																																																						
1st FLOOR COVERED AREA:	494 S.F.																																																						
TOTAL BUILDING AREA:	20,455 S.F. (GROSS AREA) ALLOWABLE AREA = 36,000 S.F.																																																						
TABLE 601 FIRE-RESISTANCE RATING REQUIREMENTS:	TYPE VB, EXTERIOR-INTERIOR BEARING WALLS, "0" FIRE-RESISTANCE RATING REQUIRED, BUILDING FULLY SPRINKLED																																																						
SECTION 1004 OCCUPANT LOAD TABLE 1004.1.1: GROUP B OCCUPANT LOAD:	<p>NOTE: ALL S.F. ARE GROSS AREAS:</p> <table> <tr> <td>1st FLOOR - GROUP B AREA:</td><td>2,754 SF/1000 =</td><td>27.5 OCC.</td></tr> <tr> <td>1st FLOOR STORAGE/MECH. - GROUP B AREA:</td><td>578 SF/300 =</td><td>1.9 OCC.</td></tr> <tr> <td>1ST FLOOR COMMON/RECREATION - GROUP R2 AREA:</td><td>803 SF/15 =</td><td>40.2 OCC.</td></tr> <tr> <td>1ST FLOOR COMPUTER ROOM - GROUP R2 AREA:</td><td>146 SF/1000 =</td><td>1.46 OCC.</td></tr> <tr> <td>1st FLOOR (DWELLING) - GROUP R2 AREA:</td><td>6,144 SF/200 =</td><td>30.72 OCC.</td></tr> <tr> <td>TOTAL 1ST FLOOR OCCUPANT LOAD:</td><td>10,025 S.F.</td><td>101.9 OCC.</td></tr> </table> <table> <tr> <td>2nd FLOOR - GROUP B AREA:</td><td>2,309 SF/1000 =</td><td>23.1 OCC.</td></tr> <tr> <td>2nd FLOOR CONFERENCE ROOM - GROUP B AREA:</td><td>482 SF/15 =</td><td>45.5 OCC.</td></tr> <tr> <td>2nd FLOOR STORAGE/MECH. - GROUP B AREA:</td><td>482 SF/300 =</td><td>2.3 OCC.</td></tr> <tr> <td>2nd FLOOR (DWELLING) - GROUP R2 AREA:</td><td>5,615 SF/200 =</td><td>28.1 OCC.</td></tr> <tr> <td>2nd FLOOR COMMON TV - GROUP R2 AREA:</td><td>212 SF/15 =</td><td>14.1 OCC.</td></tr> <tr> <td>2nd FLOOR COMPUTER ROOM - GROUP R2 AREA:</td><td>212 SF/1000 =</td><td>2.1 OCC.</td></tr> <tr> <td>2nd FLOOR STORAGE/MECH. - GROUP R2 AREA:</td><td>169 SF/300 =</td><td>0.56 OCC.</td></tr> <tr> <td>TOTAL 2ND FLOOR OCCUPANT LOAD:</td><td>9,889 S.F.</td><td>115.74 OCC.</td></tr> <tr> <td>TOTAL 1ST AND 2ND S.F. AREA/ TOTAL OCCUPANT:</td><td>20,455 S.F.</td><td>217.66 OCC.</td></tr> </table> <table> <tr> <td>COVERED PATIO - GROUP R2 AREA:</td><td>494 SF/15 =</td><td>32.8 OCC.</td></tr> <tr> <td>1st FLOOR FIRE RISER ROOM AREA:</td><td>47 S.F.</td><td>0.00 OCC.</td></tr> <tr> <td>TOTAL OCCUPANT LOAD WITH PATIO:</td><td></td><td>251.00 OCC.</td></tr> </table>	1st FLOOR - GROUP B AREA:	2,754 SF/1000 =	27.5 OCC.	1st FLOOR STORAGE/MECH. - GROUP B AREA:	578 SF/300 =	1.9 OCC.	1ST FLOOR COMMON/RECREATION - GROUP R2 AREA:	803 SF/15 =	40.2 OCC.	1ST FLOOR COMPUTER ROOM - GROUP R2 AREA:	146 SF/1000 =	1.46 OCC.	1st FLOOR (DWELLING) - GROUP R2 AREA:	6,144 SF/200 =	30.72 OCC.	TOTAL 1ST FLOOR OCCUPANT LOAD:	10,025 S.F.	101.9 OCC.	2nd FLOOR - GROUP B AREA:	2,309 SF/1000 =	23.1 OCC.	2nd FLOOR CONFERENCE ROOM - GROUP B AREA:	482 SF/15 =	45.5 OCC.	2nd FLOOR STORAGE/MECH. - GROUP B AREA:	482 SF/300 =	2.3 OCC.	2nd FLOOR (DWELLING) - GROUP R2 AREA:	5,615 SF/200 =	28.1 OCC.	2nd FLOOR COMMON TV - GROUP R2 AREA:	212 SF/15 =	14.1 OCC.	2nd FLOOR COMPUTER ROOM - GROUP R2 AREA:	212 SF/1000 =	2.1 OCC.	2nd FLOOR STORAGE/MECH. - GROUP R2 AREA:	169 SF/300 =	0.56 OCC.	TOTAL 2ND FLOOR OCCUPANT LOAD:	9,889 S.F.	115.74 OCC.	TOTAL 1ST AND 2ND S.F. AREA/ TOTAL OCCUPANT:	20,455 S.F.	217.66 OCC.	COVERED PATIO - GROUP R2 AREA:	494 SF/15 =	32.8 OCC.	1st FLOOR FIRE RISER ROOM AREA:	47 S.F.	0.00 OCC.	TOTAL OCCUPANT LOAD WITH PATIO:		251.00 OCC.
1st FLOOR - GROUP B AREA:	2,754 SF/1000 =	27.5 OCC.																																																					
1st FLOOR STORAGE/MECH. - GROUP B AREA:	578 SF/300 =	1.9 OCC.																																																					
1ST FLOOR COMMON/RECREATION - GROUP R2 AREA:	803 SF/15 =	40.2 OCC.																																																					
1ST FLOOR COMPUTER ROOM - GROUP R2 AREA:	146 SF/1000 =	1.46 OCC.																																																					
1st FLOOR (DWELLING) - GROUP R2 AREA:	6,144 SF/200 =	30.72 OCC.																																																					
TOTAL 1ST FLOOR OCCUPANT LOAD:	10,025 S.F.	101.9 OCC.																																																					
2nd FLOOR - GROUP B AREA:	2,309 SF/1000 =	23.1 OCC.																																																					
2nd FLOOR CONFERENCE ROOM - GROUP B AREA:	482 SF/15 =	45.5 OCC.																																																					
2nd FLOOR STORAGE/MECH. - GROUP B AREA:	482 SF/300 =	2.3 OCC.																																																					
2nd FLOOR (DWELLING) - GROUP R2 AREA:	5,615 SF/200 =	28.1 OCC.																																																					
2nd FLOOR COMMON TV - GROUP R2 AREA:	212 SF/15 =	14.1 OCC.																																																					
2nd FLOOR COMPUTER ROOM - GROUP R2 AREA:	212 SF/1000 =	2.1 OCC.																																																					
2nd FLOOR STORAGE/MECH. - GROUP R2 AREA:	169 SF/300 =	0.56 OCC.																																																					
TOTAL 2ND FLOOR OCCUPANT LOAD:	9,889 S.F.	115.74 OCC.																																																					
TOTAL 1ST AND 2ND S.F. AREA/ TOTAL OCCUPANT:	20,455 S.F.	217.66 OCC.																																																					
COVERED PATIO - GROUP R2 AREA:	494 SF/15 =	32.8 OCC.																																																					
1st FLOOR FIRE RISER ROOM AREA:	47 S.F.	0.00 OCC.																																																					
TOTAL OCCUPANT LOAD WITH PATIO:		251.00 OCC.																																																					
SECTION 1005.3.2 EGRESS WIDTH REQUIRED:	OCCUPANCY LOAD = 217.66 x 0.2 = 43.53 INCHES EGRESS WIDTH REQUIRED: 2- 36 inch EGRESS DOORS PROVIDED 6- 36 inch EGRESS DOORS																																																						
TABLE 1006.3.1 NUMBER OF EXITS OR ACCESS TO EXITS PER STORY:	OCCUPANCY PER STORY 1-500 = 2 EXITS REQUIRED, 5 1ST FLOOR EXITS PROVIDED.																																																						

2015 New Mexico Mechanical Code;  
2015 New Mexico Plumbing Code;  
2015 New Mexico Commercial Building Code;  
2015 New Mexico Residential Building Code;  
2017 New Mexico Electrical Code;  
2015 New Mexico Conservation Code  
2015 New Mexico Electrical Safety Code;  
2021 Uniform Plumbing Code  
2021 Uniform Mechanical Code  
2022 Uniform Administrative Code  
2018 International Energy Conservation Code (IECC);  
2015 International Building Code (IBC);  
2015 International Residential Code (IRC);  
2015 International Fire Code (IFC)  
2015 International Electrical Code (IEC);  
2015 International Mechanical Code (IMC);  
2015 International Plumbing Code (IPC);  
2015 Architectural Barriers Act Standards (ABAA)  
Uniform Federal Accessibility Standards (UFAS)  
National Fire Protection Association 101 Life Safety Code 2015

PROJECT CONSISTS OF CONSTRUCTING A WOOD FRAMED STRUCTURE FOR A MULTI-FAMILY FACILITY WITH OFFICES, INCORPORATING WOOD STUD FRAMED WALLS WITH 7/16" OSB SHEATHING, STUCCO FINISHES. TWO MEMBRANE ROOFING SYSTEM ON OSB ROOF SHEATHING OVER PRE-ENGINEERED WOOD ROOF TRUSSES, FULLY FIRE SPRINKLED.

FIRE INFORMATION	
FIRE RESISTANCE RATING REQUIREMENTS FOR BUILDING ELEMENTS (TABLE 601): TYPE 2B, VB - NONE	
FIRE RESISTANCE RATING FOR EXTERIOR WALLS (TABLE 602, 10< X <30): OCCUPANCY B, M - NONE	

REQUIRED NUMBER AND SPACING OF FIRE HYDRANTS TABLE C102.1: 3,750 GPM (3,500 - 4,000 GPM)= 4  
HYDRANTS 350' SPACING BETWEEN HYDRANTS. (2 HYDRANTS PROVIDED)

A. NO FIRE SEPARATION REQUIRED PER TABLE 508.4 REQUIRED SEPARATION OF OCCUPANCIES (HOURS) BETWEEN R AND B OCCUPANCY

AMAFCA SOUTH DIVERSION CHANNEL

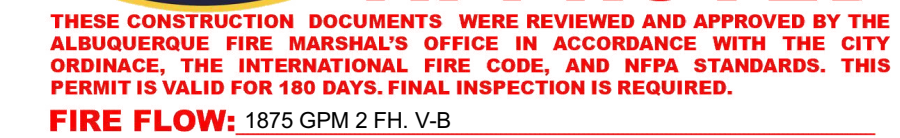
**ALBUQUERQUE FIRE MARSHAL'S  
DIVISION OFFICE PLANS  
CHECKING DIVISION**

**PERMIT**

**PERMIT NUMBER:** FP-22-009161

**APPROVED DATE:** 04/06/23

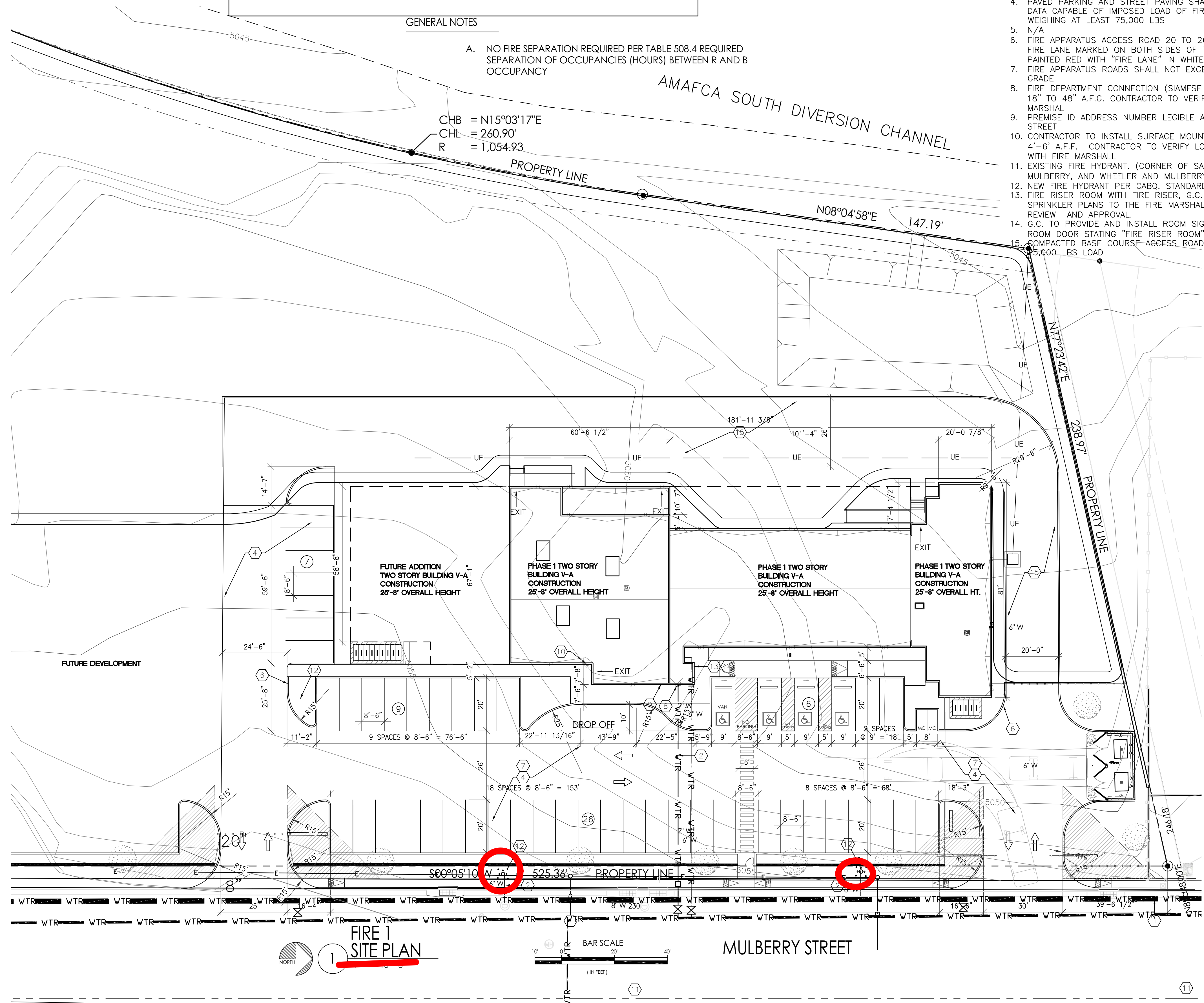
**APPROVED**



1. NEW 8" WATER LINE TO TIE INTO EXISTING 8" WATER LINE LOCATED IN MULBERRY STREET
2. 6" WATER LINE TO FIRE HYDRANTS AND FIRE RISER ROOM
3. N/A
4. PAVED PARKING AND STREET PAVING SHALL HAVE ENGINEERING DATA CAPABLE OF IMPOSED LOAD OF FIRE APPARATUS WEIGHING AT LEAST 75,000 LBS
5. N/A
6. FIRE APPARATUS ACCESS ROAD 20 TO 26' SHALL HAVE A FIRE LANE MARKED ON BOTH SIDES OF THE ROAD SHALL BE PAINTED RED WITH "FIRE LANE" IN WHITE LETTERS
7. FIRE APPARATUS ROADS SHALL NOT EXCEED 10 PERCENT IN GRADE
8. FIRE DEPARTMENT CONNECTION (SIAMESE FITTING) MOUNTED 18" TO 48" A.F.F. CONTRACTOR TO VERIFY WITH FIRE MARSHAL
9. PREMISE ID ADDRESS NUMBER LEGIBLE AND VISIBLE FROM STREET
10. CONTRACTOR TO INSTALL SURFACE MOUNTED "KNOX BOX" 6" A.F.F. CONTRACTOR TO VERIFY LOCATION AND HEIGHT WITH FIRE MARSHAL
11. EXISTING FIRE HYDRANT. (CORNER OF SAN JOSE AND MULBERRY, AND WHEELER AND MULBERRY)
12. NEW FIRE HYDRANT PER CABQ. STANDARDS
13. FIRE RISER ROOM WITH FIRE RISER, G.C. TO SUBMIT FIRE SPRINKLER PLANS TO THE FIRE MARSHALL'S OFFICE FOR REVIEW AND APPROVAL.
14. G.C. TO PROVIDE AND INSTALL ROOM SIGNAGE AT FIRE RISER ROOM DOOR STATING "FIRE RISER ROOM".
15. COMPACTED BASE COURSE ACCESS ROAD TOR AT LEAST 5,000 LBS LOAD

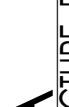
A. FIRE PROTECTION SPRINKLER DRAWINGS AND DETAILS TO BE SUBMITTED TO CITY AS A SEPARATE PERMIT BY CONTRACTOR

- A. PREMISE IDENTIFICATION - SHALL BE MINIMUM 4 INCHES HIGH X .5 INCH WIDE AND SHALL CONTRAST WITH THEIR BACKGROUND AND SHALL BE VISIBLE FROM THE STREET OR ROAD FRONTING THE PROPERTY.
- B. GENERAL CONTRACTOR TO PROVIDE AND INSTALL KNOX BOX. KNOX BOX TO BE INSTALLED IN AN ACCESSIBLE LOCATION AND BE MOUNTED NO HIGHER THAN 6'-0" ABOVE FINISH FLOOR. THE KNOX BOX SHALL BE OF AN APPROVED TYPE LISTED IN ACCORDANCE WITH UL 1037. AND SHALL CONTAIN KEYS TO GAIN ACCESS TO BUILDING AND FIRE RISER ROOM. FINAL LOCATION TO BE APPROVED BY THE FIRE MARSHALL.
- C. FIRE PROTECTION SPRINKLER SYSTEMS SHALL BE DEFERRED SUBMITTALS AND SHALL BE NOTED AS SUCH ON THE PLAN. G.C. TO SUBMIT SHOP DRAWINGS TO THE FIRE MARSHALL OFFICE FOR REVIEW AND APPROVAL OF ANY INSTALLATION OR MODIFICATION TO THE FIRE SPRINKLER SYSTEM, FIRE ALARM SYSTEM, ANY OTHER FIRE RELATED SYSTEM. THE FIRE SPRINKLER SYSTEM WILL SUPERVISED WHEN REQUIRED BY THE 2015 INTERNATIONAL FIRE CODE.
- D. G.C. TO PROVIDE FIRE EXTINGUISHERS 2A-10-BC, 1 PER EACH 3,000 S.F. FLOOR PLAN FOR QUANTITY, LOCATIONS AND TYPE.
- E. ALL PENETRATIONS THROUGH A FIRE RATED WALL ASSEMBLY TO BE FIRESTOPPED WITH THERMAFIBER AS MANUFACTURED BY THERMAFIBER, LLC, WABASH, 46992 OR OTHER APPROVED EQUAL.
- F. ALL EXIT SIGNS AND EMERGENCY LIGHTING SHALL HAVE BATTERY BACK-UP, REF: ELECTRICAL.



VETERANS INTERGATION CENTER  
FIRE 1 SITE PLAN  
2701 MULBERRY ST S.E.  
ALBUQUERQUE, NM 87106  
PROJECT #2171

STATE OF NEW MEXICO  
 RICHARD P. BENNETT  
 No. 1240  
 4/6/23  
 REGISTERED ARCHITECT



**RBA**  
ARCHITECTURE, PC  
PLANNING  
DESIGN

1104 Park Ave. SW  
Albuquerque, NM 87102  
Tel: 505.243.4400  
www.rba1.com

SHEET NUMBER

FIRE-1.0