



# City of Albuquerque

Planning Department  
Development Review Services Division

## Traffic Scoping Form (REV 05/2024)

**Project Title:** \_\_\_\_\_

Zone Atlas Page: \_\_\_\_\_ DFT/DHO #: \_\_\_\_\_ BP #: \_\_\_\_\_

Development Street Address: \_\_\_\_\_

(If no City Address include a Vicinity Map with site highlighted and legible street names)

**Applicant:** \_\_\_\_\_ **Contact:** \_\_\_\_\_

Address: \_\_\_\_\_

Phone#: \_\_\_\_\_ E-mail: \_\_\_\_\_

### Development Information

Build out/Implementation Year: \_\_\_\_\_

Existing Use: \_\_\_\_\_

Describe Proposed Development and Uses:

\_\_\_\_\_  
\_\_\_\_\_

Days and Hours of Operation (if known): \_\_\_\_\_

### Facility

Building Size (sq. ft.): \_\_\_\_\_

Number of Residential Units: \_\_\_\_\_

Number of Commercial Units: \_\_\_\_\_

### Traffic Considerations

Expected Number of Daily Visitors/Patrons (if known):\* \_\_\_\_\_

Expected Number of Employees (if known):\* \_\_\_\_\_

Expected Number of Delivery Trucks/Buses per Day (if known):\* \_\_\_\_\_

Trip Generations during PM/AM Peak Hour and ITE # (if known):\* \_\_\_\_\_

Driveway(s) Located on: Street Name \_\_\_\_\_

Adjacent Roadway(s) Posted Speed: Street Name \_\_\_\_\_ Speed \_\_\_\_\_

Street Name \_\_\_\_\_ Speed \_\_\_\_\_

*\* If these values are not known, assumptions will be made by City staff. Depending on the assumptions, a full TIS may be required.*

## Roadway Information (adjacent to site)

Comprehensive Plan Corridor Designation (e.g. Main Street, Major Transit, N/A): \_\_\_\_\_  
<https://cabq.maps.arcgis.com/apps/webappviewer/index.html?id=53bf716981b14d25a31e7a2549c2d61b>

Comprehensive Plan Center Designation (e.g. urban center, Downtown, N/A): \_\_\_\_\_  
<https://cabq.maps.arcgis.com/apps/webappviewer/index.html?id=53bf716981b14d25a31e7a2549c2d61b>

Street Functional Classification (e.g. Principal Arterial, Collector) : \_\_\_\_\_  
<https://cabq.maps.arcgis.com/apps/webappviewer/index.html?id=53bf716981b14d25a31e7a2549c2d61b>

Jurisdiction of roadway (NMDOT, City, County): \_\_\_\_\_

Adjacent Roadway(s):

Name: \_\_\_\_\_ Traffic Volume: \_\_\_\_\_ Volume-to-Capacity Ratio (v/c): \_\_\_\_\_

Name: \_\_\_\_\_ Traffic Volume: \_\_\_\_\_ Volume-to-Capacity Ratio (v/c): \_\_\_\_\_

Traffic Volume and V/C Ratio: <https://www.mrcog-nm.gov/623/Traffic-Flow-Maps-and-Busiest-Intersecti> and <https://mrcog-nm.gov/574/Transportation-Analysis-and-Querying-App>

Adjacent Transit Service(s) : \_\_\_\_\_ Nearest Transit Stop(s): \_\_\_\_\_  
<https://www.cabq.gov/gis/advanced-map-viewer>

Is site within 660 feet of Premium Transit?: \_\_\_\_\_  
<https://cabq.maps.arcgis.com/apps/webappviewer/index.html?id=53bf716981b14d25a31e7a2549c2d61b>

Current/Proposed Bicycle Infrastructure : \_\_\_\_\_

Bikeways: <https://mrcog-nm.gov/544/Long-Range-System-maps>

Current/Proposed Sidewalk and buffer Infrastructure: \_\_\_\_\_

Sidewalk and buffer width : DPM Table 7.2.29

Submit by email to Traffic Engineer Curtis Cherne: [ccherne@cabq.gov](mailto:ccherne@cabq.gov). Email or call 505-924-3986 for information.

## **For City Personnel Use:**

### TIS Determination

**Note:** Changes made to development proposals / assumptions, from the information provided above, will result in a new TIS determination.

**Traffic Impact Study (TIS) Required: Yes [ ] No [ X ]**

Thresholds Met? Yes [ ] No [ X ]

Mitigating Reasons for Not Requiring TIS and/or Notes:

The City agrees that the ITE code for a transit Park and Ride is not appropriate for an airport overflow or long term parking lot. This site should not generate enough traffic to warrant a study.

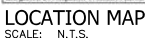
Ernest Armijo  
TRAFFIC ENGINEER

\_\_\_\_\_  
DATE

Land Use Code	Detail	Factor	Daily	AM Peak Hour			PM Peak Hour		
				IN	OUT	TOTAL	IN	OUT	TOTAL
Proposed Use									
090	Park-and-Ride Lot with Bus or Light Rail Service	294 spaces	1,141	103	26	129	40	121	161
Net New Trips			1,141	103	26	129	40	121	161

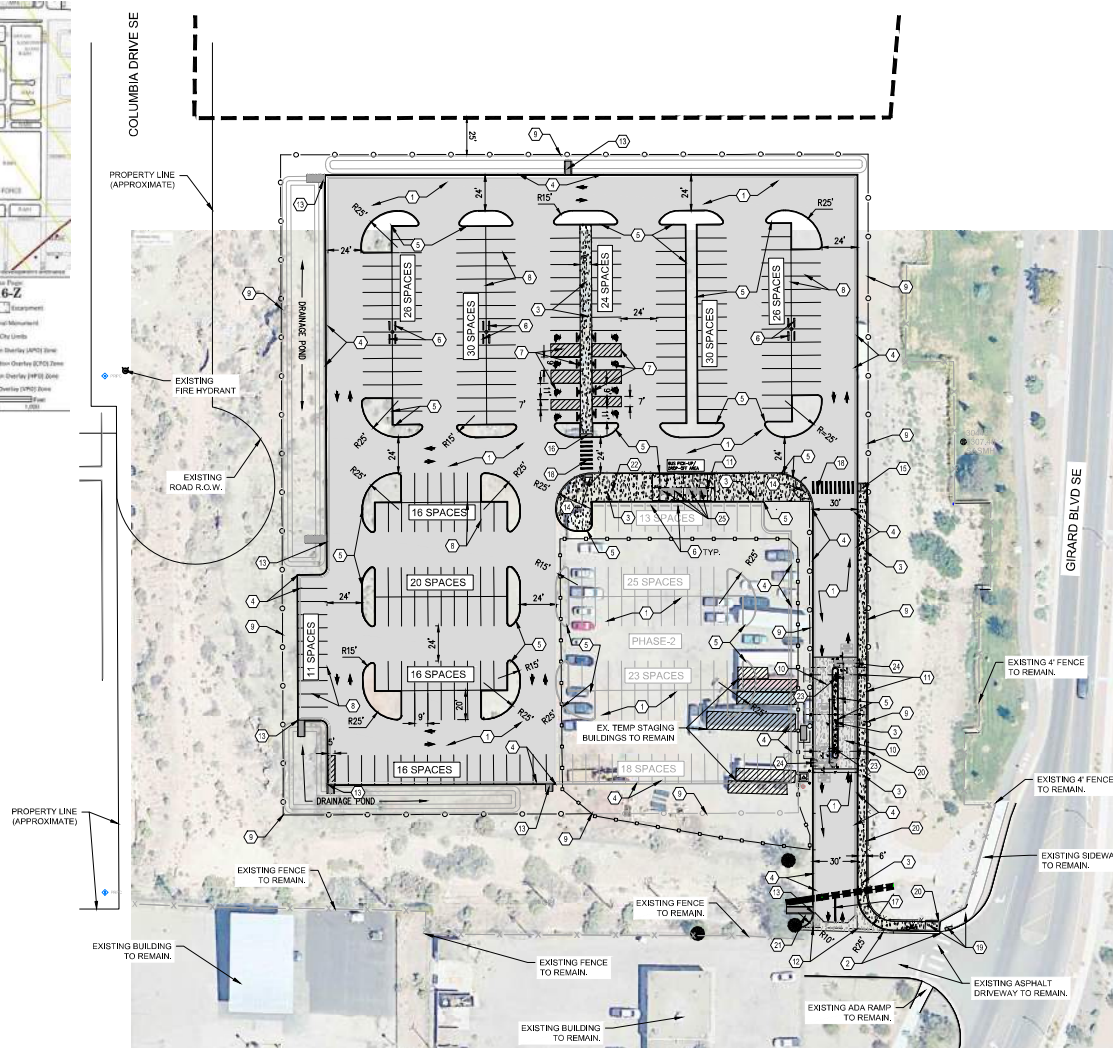




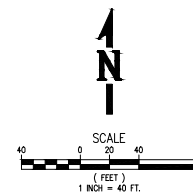


1. ALL WORK DETAILED ON THESE PLANS TO BE PERFORMED, EXCEPT AS OTHERWISE STATED OR PROVIDED HEREON, SHALL BE CONSTRUCTED IN ACCORDANCE WITH CITY OF ALBUQUERQUE STANDARD SPECIFICATION FOR PUBLIC WORKS CONSTRUCTION, CURRENT EDITION.

24. CONSTRUCT ASPHALT PAVEMENT PER DETAIL 3, SHEET C-501.
25. SANJOY EXISTING ASPHALT PAVEMENT & MATCH NEW ASPHALT PER DETAIL 2, SHEET C-501.
26. CONSTRUCT CONCRETE SIDEWALK PER DETAIL 3, SHEET C-501.
27. CONSTRUCT 6" (WOODED) STANDARD CURB & GUTTER PER DETAIL 3, SHEET C-502.
28. CONSTRUCT 6" (WOODED) CURB PER DETAIL 2, SHEET C-502. OOA STANDARD DWG. 24198.
29. INSTALL (4)-EACH PARKING BUMPERS NEXT TO NEW LIGHT POLE BASE.
30. INSTALL HANDICAP PARKING STRIPPS, SYMBOLS AND SIGNS PER DETAIL 6, 7 & 8. SHEET C-501. ADA ACCESSIBLE PARKING SIGN MUST HAVE REQUIRED LANGUAGE "WHEELCHAIRS ARE SUBJECT TO A FINE AND/OR TOWING".
31. INSTALL PARKING SPACE (9' x 20') STRIPING PER DETAIL 6, SHEET C-501. (TYPICAL)
32. INSTALL 6" HEIGHT WOODEN RAIL FENCE PER DETAIL 6, SHEET C-502 OR APPROX. EQUAL.
33. CONSTRUCT REINFORCED CONCRETE PAVEMENT PER DETAIL 1, SHEET C-501.
34. NEW COVER CANOPY, SEE STRUCTURAL PLAN FOR CONSTRUCTION DETAILS.
35. CONSTRUCT CONCRETE VALLEY GUTTER PER DETAIL 4, SHEET C-503.
36. CONSTRUCT CONCRETE ROUNDOFF PER DETAIL 5, SHEET C-502.
37. CONSTRUCT PERPENDICULAR CURB RAMP PER DETAIL 5, SHEET C-503.
38. CONSTRUCT PARALLEL CURB RAMP PER DETAIL 2, SHEET C-503.
39. INSTALL DETECTABLE WARNING SURFACE TO NEW SIDEWALK FOR PEDESTRIAN CROSSING.
40. INSTALL 24"x 18" WHITE STRIPING FOR TWO WAY TRAFFIC SEPARATION.
41. INSTALL 24"x 24" 1/8" (SPACED @ 3'-0" C-TO C) WHITE STRIPING FOR PEDESTRIAN CROSSING.
42. DEMO EXISTING HEADER CURB OF CONCRETE RAMP, CONSTRUCT CORNER ACCESS RAMP PER DETAIL 3, SHEET C-503. (C.O.A. DWG 2444).
43. DEMO 4" HEIGHT TO WIRE MESH PANEL FENCE (MATCH EXISTING FENCE) OR CONSTRUCT PER DETAIL 7, SHEET C-502.
44. INSTALL STOP SIGN AT EXT SIDE OF DRIVE PER DETAIL 10, SHEET C-501.
45. INSTALL EMERGENCY CALL STATION, SEE ELECTRICAL PLAN FOR DETAILS.
46. INSTALL ARMAD-ONE LPR TICKETING AND EXT SYSTEM PER MANUFACTURER'S SPECIFICATIONS, SEE ELECTRICAL PLAN FOR ADDITIONAL DETAILS.
47. INSTALL HYDROSTRI STRONGARM W30 GATE PER DETAIL 1, SHEET C-504 AND MANUFACTURER'S SPECIFICATIONS, SEE ELECTRICAL PLAN FOR ADDITIONAL DETAILS.
48. FURNISH AND INSTALL 6" STEEL BENCH (4 EACH) WITH BACKREST, MODEL 58-60 FOR 24" AVAILABLE FROM EXTERPLY, INC. IN STANDARD POWER COAT COLOR OPTION (MATCH WITH VERTICAL STEEL STRAP STEP AND INTERMEDIATE ARM CHAIRS, (OR APPROVED EQUIVALENT) SURFACE MOUNT WITH STAINLESS STEEL SEAMING NODS OR ANCHORS, MINIMUM LENGTH: 5". ANCHOR DIAMETER TO MATCH ANCHOR HOLES ON EXISTING ANCHOR POINTS. SEE ELECTRICAL PLAN FOR DETAILS.



### TRAFFIC CIRCULATION LAYOUT(TCL) - AIS OVERFLOW PARKING LOT



**LEGAL DESCRIPTION**  
SUNPORT MUNICIPAL ADDITION, LOT: A1, BLOCK: 0000.  
A REPLAT OF LANDS OF ALBUQUERQUE INTERNATIONAL  
AIRPORT. JULY, 2002

### PARKING SPACE SUMMARY

PHASE-1 PARKING SPACE =  
207 - REGULAR SPACE  
8 - HANDICAP SPACE(2 VAN ACCESSIBLE)  
215 - TOTAL SPACES

PHASE-2 PARKING SPACE = 79 REGULAR SPACES  
OVERALL PROJECT PARKING SPACES = 294.

NOTE: TOTAL PARKING SPACES 101-300,  
TOTAL REQUIRED ACCESSIBLE PARKING SPACES = 8  
NUMBER REQUIRED TO BE VAN ACCESSIBLE = 2  
(SOURCE: 2021 N.M. ACCESSIBLE PARKING CHECKLIST)

## SITE DATA:

SITE:	185,130.00 S.F.
BUILDING:	0.00 S.F.(0%)
PAVING:	139,392.00 S.F.(75%)
LANDSCAPE:	45,738.00 S.F.(25%)

[illegible]

<p align="center">CITY OF ALBUQUERQUE PUBLIC WORKS DEPARTMENT ENGINEERING DEVELOPMENT GROUP</p>				
<p align="center">TITLE: ALBUQUERQUE INTERNATIONAL AIRPORT OVERFLOW PARKING LOT TRAFFIC CIRCULATION LAYOUT</p>				
Design Review Committee		City Engineer Approval		<p align="center">MS/Day/Yr.      MS/Day/Yr.</p>
				<p align="center">Last Design Update</p>
City Project No.		Zone Map No.	Drawing No.	Sheet
7540.001-T9		M-16	IC1 1.0	Of