

Olson, Greg

From: Fred Arfman [freda@iacivil.com]
Sent: Friday, November 01, 2013 2:46 PM
To: Olson, Greg
Subject: New Day Shelter
Importance: High
Attachments: image002.jpg

Greg,

I hope this format is acceptable for conveying the requested information on the subject project.

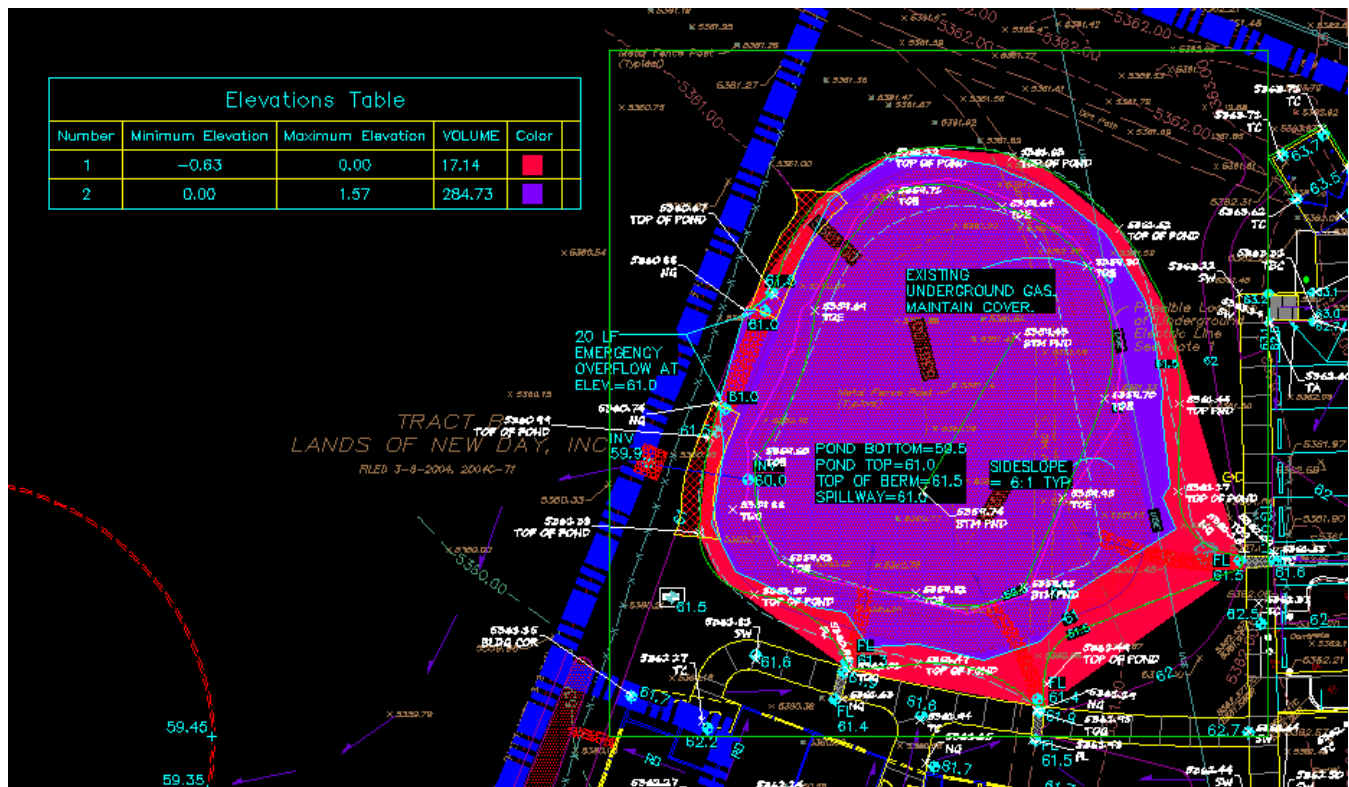
Based on Civil 3D volume analysis using the as-built information provided by the surveyor, the as-built pond volume with a spillway elevation of 61.0 has an available volume of 285 CY = 7,695 CF (see image below) which exceeds the required volume.

Per the approved Drainage Concept:

BASIN 2 INCLUDES THE NORTHERN PORTION OF THE PROPERTY INCLUDING PARKING, LANDSCAPE AND APPROXIMATELY 25% OF THE PROPOSED BUILDING ADDITION. THIS BASIN WILL GENERATE APPROXIMATELY 3.9 CFS (6203 CF VOLUME) DURING THE 100-YEAR 6-HOUR STORM. ALL OF BASIN 2 DISCHARGE WILL BE PASSED TO THE PROPOSED NORTH DETENTION POND (AVAILABLE VOLUME = 7,743 CF PROVIDING ADDITIONAL CAPACITY FOR FUTURE DEVELOPMENT). THIS POND WILL DRAIN TO BULLHEAD PARK VIA THE PROPOSED 6" STORM DRAIN.

The as-built pond has been constructed with a volume exceeding the required volume. In addition, excess volume is available for future construction. It should be noted that Basin 2 for this phase of construction, generates 6,203 CF. The pond design did not take into account the inflow / outflow hydrograph (0.8 cfs discharge rate from the pond).

Fred



Fred C. Arfman, P.E.
 Principal/ President

11/1/2013

Isaacson & Arfman, P.A.
Consulting Engineering Associates
128 Monroe St. N.E.
Albuquerque, NM 87108
Phone: (505)268-8828
Fax: (505)268-2632
freda@iacivil.com

CONFIDENTIALITY STATEMENT and CONTENT NOTIFICATION : This message and any accompanying attachment(s) contain information which may be confidential or privileged and is intended only for the individual or entity named above. It is prohibited to disclose, copy, or distribute the contents of this message. If you received this message in error, please notify us immediately.

Recipient acknowledges that any attached electronic files may not contain all of the information on the approved construction documents and are not intended to be relied upon as a replacement for the approved construction documents(s).

This information is provided to the user as a courtesy by I&A for this project only and shall not be used for any other purpose without the express written consent of Isaacson & Arfman, PA.