

# SURVEY LEGEND:

BGG	BASKETBALL GOAL	MLP	METAL LIGHT POLE WITH 2' DIAMETER CONCRETE BASE
BOH	BUILDING OVERHANG	MNT	CONCRETE MOUNTABLE CURB
BPM	STORM DRAIN LINE PAINT MARK	MTC	METAL TRASH CAN
CBW	CONCRETE BARRIER WALL	PVC	POLYVINYL CHLORIDE PIPE
CF	LANDSCAPING CRUSHER FINES	RCP	REINFORCED CONCRETE PIPE
CHC	CONCRETE HEADER CURB	SAS	SANITARY SEWER
CLD	CENTERLINE DOOR	SD	STORM DRAIN
CLDD	CENTERLINE DOUBLE DOOR	SGP	STEEL GUARD POST
CLF	CHAIN LINK FENCE	SP	STEEL POLE (GATE STOP)
CMS	CONCRETE MOW STRIP	SW	SIDEWALK
CMU	CONCRETE MASONRY UNIT WALL	TC	TOP OF CONCRETE
CO	CLEANOUT	TG	TOP OF GRATE
CONC	CONCRETE	TS	TRAFFIC SIGN
CRD	CONCRETE RUNDOWN	WL	WATER LINE
CSW	CONCRETE SIDEWALK	WMH	WATER MANHOLE
CUV	CONCRETE UTILITY VAULT (NOT SPOTTED)	WVB	WATER VALVE BOX
E/PM	ELECTRIC LINE BY PAINT MARK		
FL	FLOWLINE		
G/PM	GAS LINE BY PAINT MARK		
GP	GUARD POST		
GS	GAS SERVICE		
HDPE	HIGH DENSITY POLYETHYLENE PIPE		
INV	INVERT		
LSD	LANDSCAPE DIVIDER		
MB	METAL BENCH		
MH	MANHOLE		
MHR	METAL HAND RAIL		

## EASEMENT KEYED NOTES

- 20' ABCWUA PUBLIC WATER LINE EASEMENT GRANTED BY DOCUMENT FILED 10-22-2008, DOC. #2008114963
- 50' PUBLIC STORM SEWER EASEMENT GRANTED BY PLAT 2005C-361

## UTILITY KEYED NOTE

- HIGH MESA CONSULTING GROUP, APS PROTOTYPE #3, PUBLIC WATER LINE IMPROVEMENTS, OVERALL PUBLIC WATER LINE PLAN, RECORD DRAWING SHEET 3 OF 6, CERTIFIED 02-26-2009.

## DESIGN LEGEND

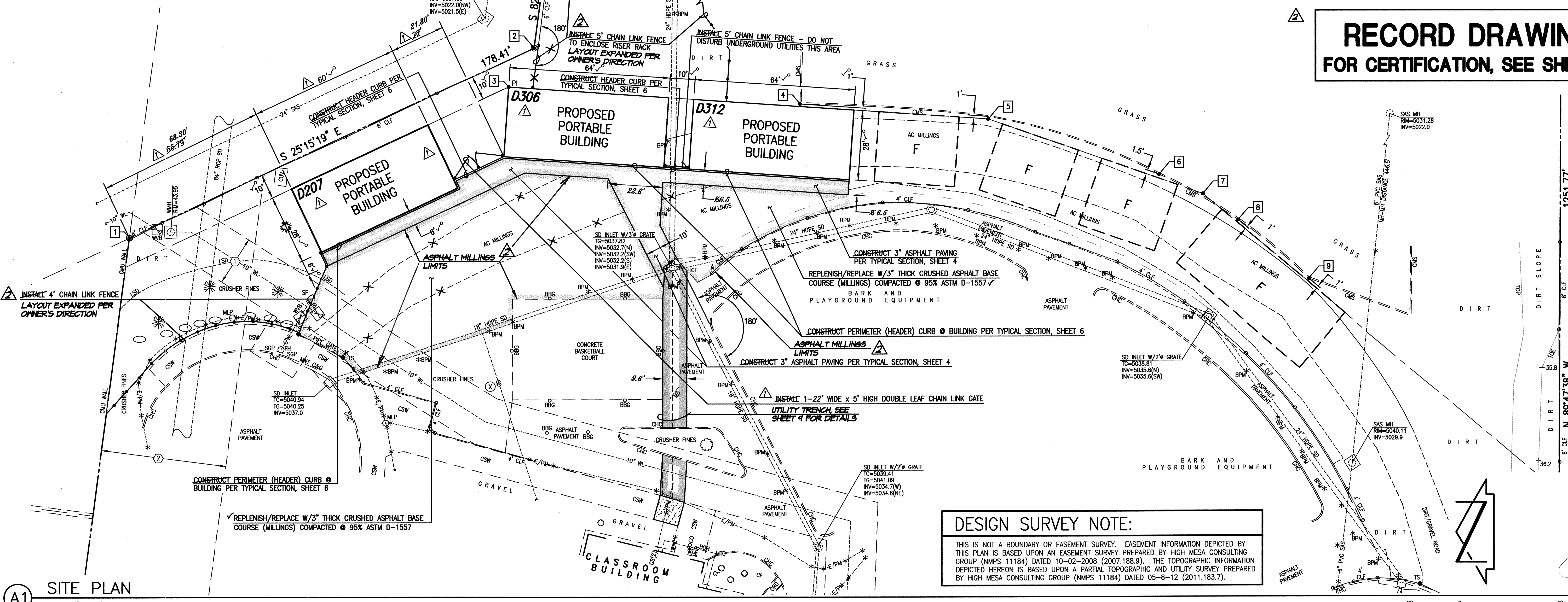
	PROPOSED RETAINING WALL
	PROPOSED CONCRETE
	PROPOSED ASPHALT PAVING
	PROPOSED GRAVEL
	FUTURE LOCATION

## COORDINATE TABLE

POINT	NORTHING	EASTING
1	1,468,678.96	1,496,431.98
2	1,468,517.61	1,496,508.10
3	1,468,527.81	1,496,492.24
4	1,468,411.59	1,496,485.35
5	1,468,336.58	1,496,479.26
6	1,468,268.51	1,496,456.87
7	1,468,251.07	1,496,449.14
8	1,468,237.03	1,496,438.65
9	1,468,208.89	1,496,415.00

RECORD DRAWING LEGEND	
CONSTRUCT	RECORD INFORMATION (VERIFIED BY ENGINEER)
✓	AS-CONSTRUCTED = AS-DESIGNED (VERIFIED BY ENGINEER)
38' 42"	RECORD INFORMATION (VERIFIED BY ENGINEER)
+25.2	RECORD INFORMATION (VERIFIED BY ENGINEER)
28.98.42	RECORD INFORMATION (VERIFIED BY ENGINEER)
✓	AS-CONSTRUCTED = AS-DESIGNED (VERIFIED BY AS-BUILT SURVEY)
31.18	RECORD INFORMATION FROM AS-BUILT SURVEY
+26.9	RECORD INFORMATION FROM AS-BUILT SURVEY
31.25.22	RECORD INFORMATION FROM AS-BUILT SURVEY

**RECORD DRAWING  
FOR CERTIFICATION, SEE SHEET 1**



**DESIGN SURVEY NOTE:**  
THIS IS NOT A BOUNDARY OR EASEMENT SURVEY. EASEMENT INFORMATION DEPICTED BY THIS PLAN IS BASED UPON AN EASEMENT SURVEY PREPARED BY HIGH MESA CONSULTING GROUP (NMP 11184) DATED 10-02-2008 (2007.188.9). THE TOPOGRAPHIC INFORMATION DEPICTED HEREON IS BASED UPON A PARTIAL TOPOGRAPHIC AND UTILITY SURVEY PREPARED BY HIGH MESA CONSULTING GROUP (NMP 11184) DATED 05-8-12 (2011.183.7).

**A1 SITE PLAN**  
SCALE: 1" = 20'

**SITE PLAN  
PORTABLE CLASSROOM INSTALLATIONS-PHASE 2  
RUDOLFO ANAYA ELEMENTARY SCHOOL  
2800 VERMEJO PARK DRIVE SW**

DESIGNED BY	J.G.M.	NO.	DATE	BY	REVISIONS	JOB NO.
DRAWN BY	J.Y.R./E.J.S.	1	07/12	J.G.M.	CHANGE PORTABLE BUILDINGS	2011.183.8
APPROVED BY	J.G.M.	2	10-12	B.E.E.	RECORD DRAWING AND CERTIFICATION	DATE 06-2012
						SHEET 4 OF 11

**HIGH MESA Consulting Group**  
4010-B MIDWAY PARK BLVD. NE • ALBUQUERQUE, NEW MEXICO 87109  
PHONE: 505.345.4250 • FAX: 505.345.4254 • www.highmesacg.com

File Path: P:\MWA\2011\183.8\DWG [Plot Date: 01-16-2013]  
File Name: 111838\_S44\_P2.DWG [Plot Time: 11:37 am]