

CONSTRUCTION NOTES:

- 1. TWO (2) WORKING DAYS PRIOR TO ANY EXCAVATION, CONTRACTOR MUST CONTACT NEW MEXICO ONE CALL SYSTEM 260-1990 (ALBUQUERQUE AREA), 1-800-321-ALERT(2537) (STATEWIDE), FOR LOCATION OF EXISTING UTILITIES.
- 2. PRIOR TO CONSTRUCTION, THE CONTRACTOR SHALL EXCAVATE AND VERIFY THE HORIZONTAL AND VERTICAL LOCATION OF ALL POTENTIAL OBSTRUCTIONS. SHOULD A CONFLICT EXIST, THE CONTRACTOR SHALL NOTIFY THE ENGINEER IN WRITING SO THAT THE CONFLICT CAN BE RESOLVED WITH A MINIMUM AMOUNT OF DELAY. THE CONTRACTOR SHALL BE RESPONSIBLE FOR ALL INTERPRETATIONS IT MAKES WITHOUT FIRST CONTACTING THE ENGINEER AS REQUIRED ABOVE.
- 3. ALL WORK ON THIS PROJECT SHALL BE PERFORMED IN ACCORDANCE WITH APPLICABLE FEDERAL, STATE AND LOCAL LAWS, RULES AND REGULATIONS CONCERNING CONSTRUCTION SAFETY AND HEALTH.
- 4. ALL CONSTRUCTION WITHIN PUBLIC RIGHT-OF-WAY SHALL BE PERFORMED IN ACCORDANCE WITH APPLICABLE CITY OF ALBUQUERQUE STANDARDS AND PROCEDURES.
- 5. IF ANY UTILITY LINES, PIPELINES, OR UNDERGROUND UTILITY LINES ARE SHOWN ON THESE DRAWINGS, THEY ARE SHOWN IN AN APPROXIMATE MANNER ONLY, AND SUCH LINES MAY EXIST WHERE NONE ARE SHOWN. IF ANY SUCH EXISTING LINES ARE SHOWN, THE LOCATION IS BASED UPON INFORMATION PROVIDED BY THE OWNER OF SAID UTILITY, AND THE INFORMATION MAY BE INCOMPLETE, OR MAY BE OBSOLETE BY THE TIME CONSTRUCTION COMMENCES. THE ENGINEER HAS CONDUCTED ONLY PRELIMINARY INVESTIGATION OF THE LOCATION, DEPTH, SIZE, OR TYPE OF EXISTING UTILITY LINES, PIPELINES, OR UNDERGROUND UTILITY LINES. THIS INVESTIGATION IS NOT CONCLUSIVE, AND MAY NOT BE COMPLETE, THEREFORE, MAKES NO REPRESENTATION PERTAINING THERETO, AND ASSUMES NO RESPONSIBILITY OR LIABILITY THEREFOR. THE CONTRACTOR SHALL INFORM ITSELF OF THE LOCATION OF ANY UTILITY LINE, PIPELINE, OR UNDERGROUND UTILITY LINE IN OR NEAR THE AREA OF THE WORK IN ADVANCE OF AND DURING EXCAVATION WORK. THE CONTRACTOR IS FULLY RESPONSIBLE FOR ANY AND ALL DAMAGE CAUSED BY ITS FAILURE TO LOCATE, IDENTIFY AND PRESERVE ANY AND ALL EXISTING UTILITIES, PIPELINES, AND UNDERGROUND UTILITY LINES. IN PLANNING AND CONDUCTING EXCAVATION, THE CONTRACTOR SHALL COMPLY WITH STATE STATUTES, MUNICIPAL AND LOCAL ORDINANCES, RULES AND REGULATIONS, IF ANY, PERTAINING TO THE LOCATION OF THESE LINES AND FACILITIES.

EROSION CONTROL MEASURES:

- 1. THE CONTRACTOR SHALL ENSURE THAT NO SOIL ERODES FROM THE SITE INTO PUBLIC RIGHT-OF-WAY OR ONTO PRIVATE PROPERTY.
- 2. THE CONTRACTOR SHALL PROMPTLY CLEAN UP ANY MATERIAL EXCAVATED WITHIN THE PUBLIC RIGHT-OF-WAY SO THAT THE EXCAVATED MATERIAL IS NOT SUSCEPTIBLE TO BEING WASHED DOWN THE STREET.
- 3. WHEN APPLICABLE, CONTRACTOR SHALL SECURE "TOPSOIL DISTURBANCE PERMIT" FROM THE CITY AND/OR FILE A NOTICE OF INTENT (N.O.I.) WITH THE EPA PRIOR TO BEGINNING CONSTRUCTION.
- 4. UNLESS FINAL STABILIZATION IS OTHERWISE PROVIDED FOR, ANY AREAS OF EXCESS DISTURBANCE (TRAFFIC ACCESS, STORAGE YARD, EXCAVATED MATERIAL, ETC.) SHALL BE RE-SEEDING ACCORDING TO C.O.A. SPECIFICATION 1012 "NATIVE GRASS SEEDING". THIS WILL BE CONSIDERED INCIDENTAL TO CONSTRUCTION, THEREFORE, NO SEPARATE PAYMENT WILL BE MADE.

ENGINEER'S DRAINAGE CERTIFICATION

I, JEFFREY G. MORTENSEN, NMPE 8547, OF THE FIRM HIGH MESA CONSULTING GROUP, HEREBY CERTIFY THAT THIS PROJECT HAS BEEN GRADED, DRAINED AND CONSTRUCTED IN SUBSTANTIAL COMPLIANCE WITH AND IN ACCORDANCE WITH THE DESIGN INTENT OF THE APPROVED PLAN DATED 07-03-2012, AND REVISED 07-30-2012 TO INCORPORATE BUILDING NUMBERS, WITH THE FOLLOWING EXCEPTIONS:

- 1. THE WATER VALVE BOX COLLAR AT THE POINT OF CONNECTION AT THE MAIN BUILDING WAS NOT CONSTRUCTED OCTAGONALLY PER STANDARD DETAIL. THIS MAY BECOME A MAINTENANCE PROBLEM IF THE SQUARE CORNERS CRACK. THIS DEVIATION, HOWEVER, WILL NOT HAVE AN ADVERSE IMPACT ON THE GRADING AND DRAINAGE OF THE SITE.
- 2. BUILDING D207 IS APPROXIMATELY 0.25 FEET LOWER THAN DESIGNED BECAUSE DISTANCE FROM FINISH FLOOR TO BOTTOM OF BEAM IS APPROXIMATELY 17 INCHES, NOT THE TYPICAL 20 INCHES. THE ADJACENT GRADES WERE ADJUSTED IN RESPONSE THEREFORE THIS DEVIATION WILL NOT HAVE AN ADVERSE IMPACT ON THE DRAINAGE OF THE PROJECT.

THE RECORD INFORMATION EDITED ONTO THE ORIGINAL DESIGN DOCUMENT HAS BEEN OBTAINED BY ME OR PERSONNEL UNDER MY DIRECT SUPERVISION AS SUPPLEMENTAL SITE DATA COMBINED WITH RECORD INFORMATION OBTAINED FROM THE AS-BUILT SURVEY DATED 09-24-2012 PERFORMED UNDER THE DIRECT SUPERVISION OF CHARLES G. CALA, JR., (NMPS 11184) OF THE FIRM HIGH MESA CONSULTING GROUP AND IS TRUE AND CORRECT TO THE BEST OF MY KNOWLEDGE AND BELIEF. THIS CERTIFICATION IS SUBMITTED TO DOCUMENT COMPLETION OF THOSE IMPROVEMENTS IDENTIFIED ON THE APPROVED PLAN FOR THE OWNER AND TO SUPPORT A REQUEST FOR PERMANENT CERTIFICATE OF OCCUPANCY.

THE RECORD INFORMATION PRESENTED HEREON IS NOT NECESSARILY COMPLETE AND INTENDED ONLY TO VERIFY SUBSTANTIAL COMPLIANCE OF THE GRADING AND DRAINAGE AND SPECIFIC LIMITED ASPECTS OF THIS PROJECT. THIS CERTIFICATION DOES NOT ADDRESS ADA COMPLIANCE WHICH IS BEYOND THE SCOPE OF GRADING AND DRAINAGE. THOSE RELYING ON THIS RECORD DOCUMENT ARE ADVISED TO OBTAIN INDEPENDENT VERIFICATION OF ITS ACCURACY BEFORE USING IT FOR ANY OTHER PURPOSE.

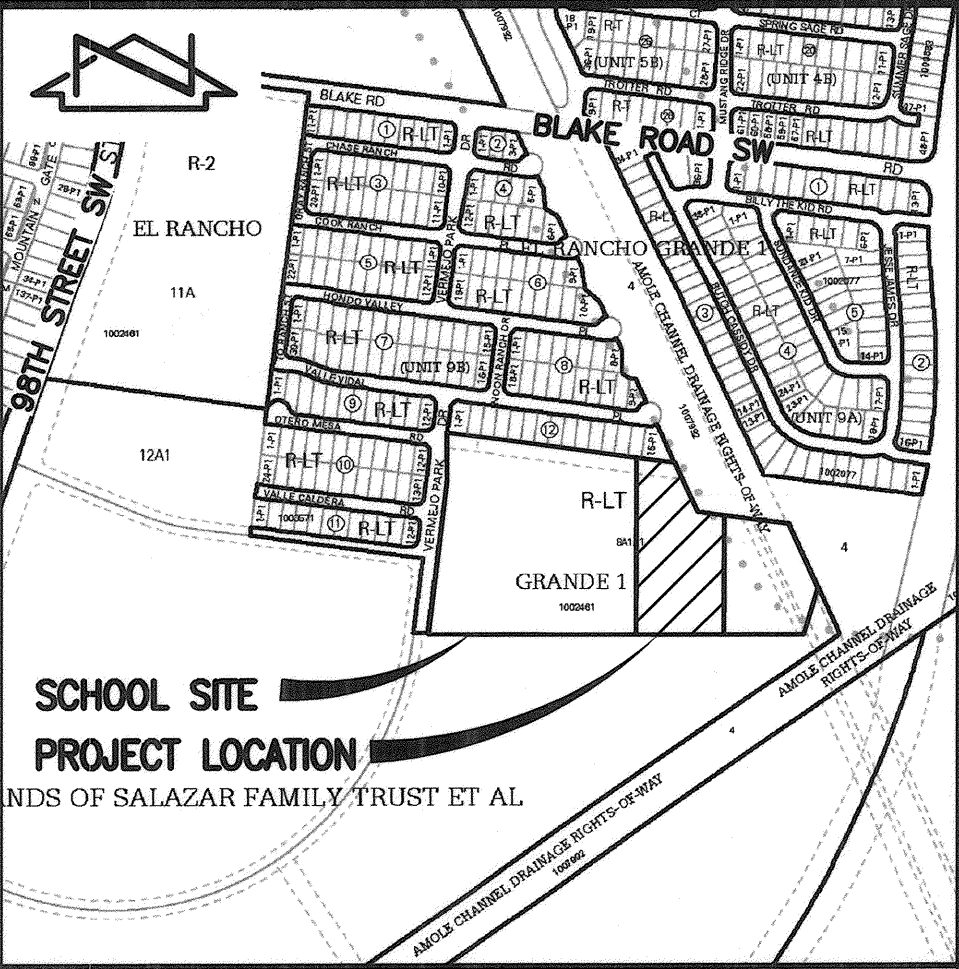
JEFFREY G. MORTENSEN, NMPE 8547

DATE

07-16-2013



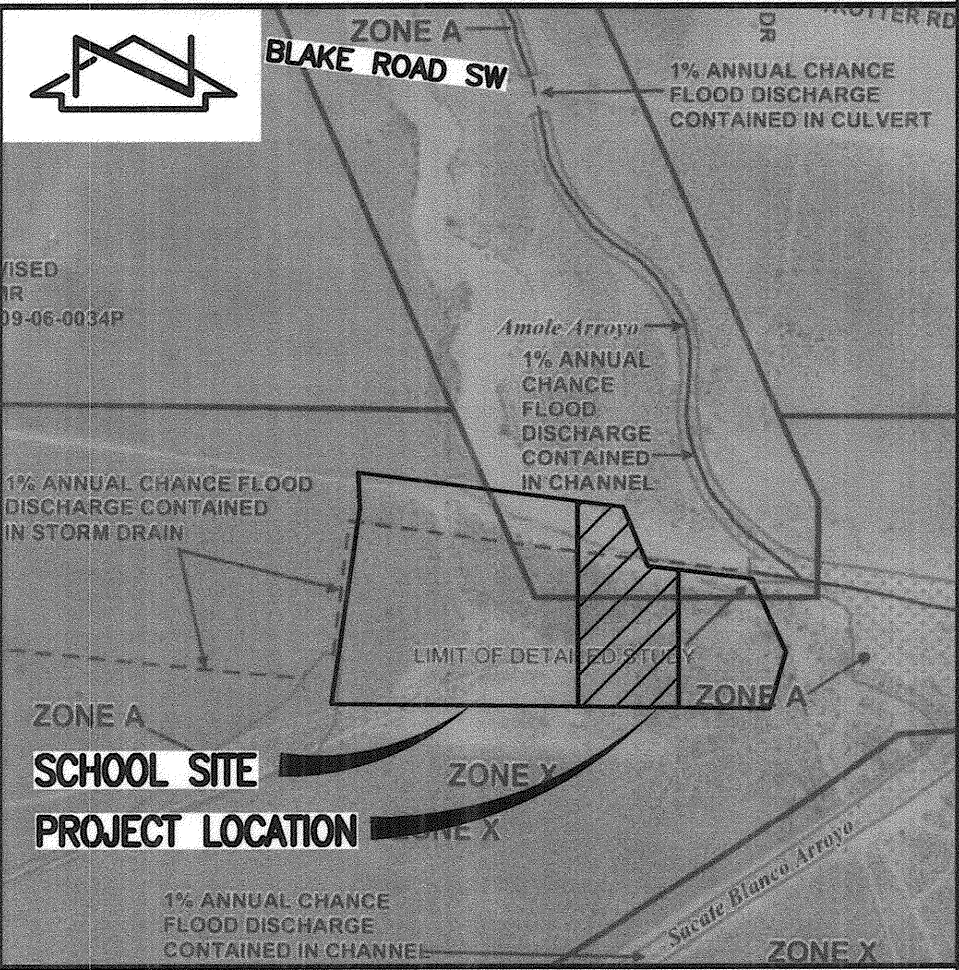
RECORD DRAWING



VICINITY MAP

SCALE: 1" = 750' (APPROX.)

N-09



F.I.R.M.

SCALE: 1" = 500' (APPROX.)

PANEL 336 OF 825

DATED 10/20/2008

LEGAL DESCRIPTION

A PORTION OF TRACT 8-A-1-A-1, EL RANCHO GRANDE I, ALBUQUERQUE, NEW MEXICO.

PROJECT BENCHMARK

ACS 3 1/4" ALUMINUM CAP STAMPED "3-N10", SET FLUSH ON TOP OF CONCRETE CURB IN THE NW CURB RETURN OF UNSER BOULEVARD S.W. AND BLAKE ROAD S.W., LOCATED 25.4 FEET NORTH OF CENTERLINE OF BLAKE ROAD S.W. AND 92.0 FEET WEST OF CENTERLINE OF UNSER BOULEVARD S.W., NOT SHOWN. ELEVATION = 5036.50 (NAVD 88)

TEMPORARY BENCHMARK (T.B.M.)

A #5 REBAR W/CAP STAMPED "HMC CONTROL NMPS 11184", AS SHOWN ON SHEET 7. ELEVATION=5041.13 (NAVD 88)

INDEX OF DRAWINGS

- 1 OF 1 SUPPLEMENTAL SITE AND DRAINAGE INFORMATION
- 2 OF 11 OVERALL PLAN (FOR ORIENTATION)
- 3 OF 11 DEMOLITION PLAN (FOR EXISTING CONDITIONS)
- 6 OF 11 HEADER CURB SECTIONS
- 7 OF 11 GRADING PLAN
- 8 OF 11 DRAINAGE PLAN AND CALCULATIONS
- 11 OF 11 APS PORTABLE CLASSROOM FOUNDATION PLAN

HIGH MESA Consulting Group

6010-B MIDWAY PARK BLVD. NE • ALBUQUERQUE, NEW MEXICO 87109  
PHONE: 505.345.4250 • FAX: 505.345.4254 • www.highmesacg.com

SUPPLEMENTAL SITE AND DRAINAGE INFORMATION  
PORTABLE CLASSROOM INSTALLATIONS - PHASE 2  
RUDOLFO ANAYA ELEMENTARY SCHOOL

DESIGNED BY J.G.M.

DRAWN BY E.J.S.

APPROVED BY J.G.M.

NO. 12/12 BY B.E.E. RECORD DRAWING

JOB NO. 2011.183.8

DATE 07-2012

SHEET 1 OF 1