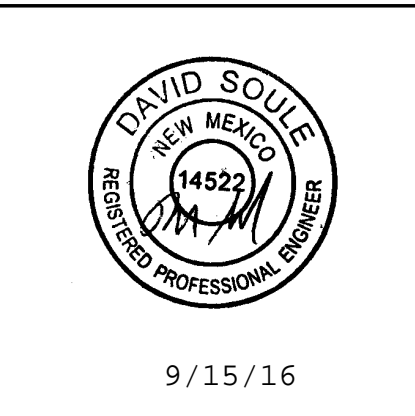
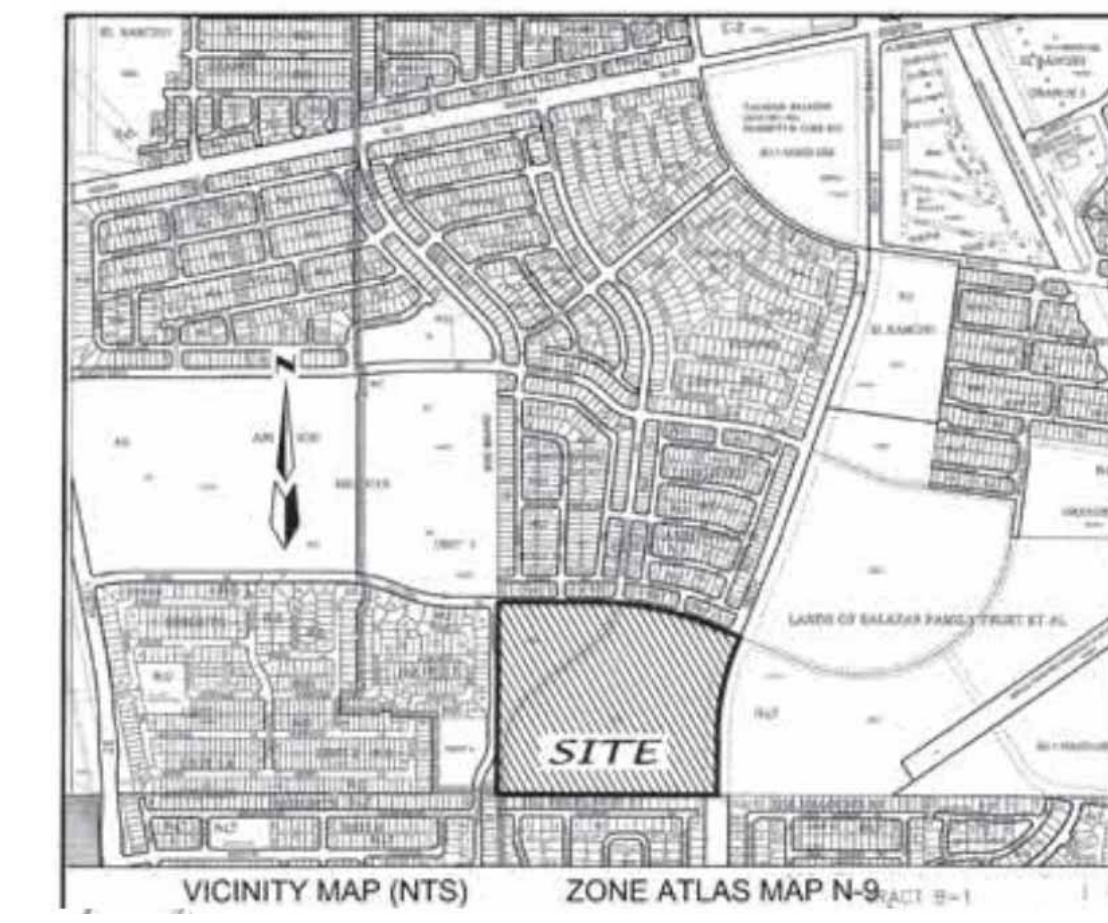


Inspections Plus, Inc.

Engineer Stamp



- Note:**
- When doing work in the City ROW (sidewalk, storm drain, drive pads) avoid dirt from getting into the street. If dirt is present in the street, the street should be swept every few days or the same day if rain is imminent.
 - If stock piling dirt in the street and rain is forecasted, place wattles along the down slope side of the pile.



**Desert Sands Subdivision
COA Work Order ECP**

Legend

- Median Catch Basin
- Flow
- Drop Inlet Protection
- Asphalt Cut Sediment Barrier
- Wattle (Stock Pile Protection)

