



Federal Emergency Management Agency

Washington, D.C. 20472

LETTER OF MAP REVISION DETERMINATION DOCUMENT

COMMUNITY AND REVISION INFORMATION		PROJECT DESCRIPTION	BASIS OF REQUEST
COMMUNITY	City of Albuquerque Bernalillo County New Mexico	NO PROJECT	HYDRAULIC ANALYSIS HYDROLOGIC ANALYSIS UPDATED TOPOGRAPHIC DATA
	COMMUNITY NO.: 350002		
IDENTIFIER	Tracts A-1-A and A-1-B Salazar Family Trust	APPROXIMATE LATITUDE & LONGITUDE: 35.031, -106.743 SOURCE: Precision Mapping Streets DATUM: NAD 83	
ANNOTATED MAPPING ENCLOSURES		ANNOTATED STUDY ENCLOSURES	
TYPE: FIRM* NO.: 35001C0336H DATE: August 16, 2012 TYPE: FIRM* NO.: 35001C0338H DATE: August 16, 2012		NO REVISION TO THE FLOOD INSURANCE STUDY REPORT	

Enclosures reflect changes to flooding sources affected by this revision.

* FIRM - Flood Insurance Rate Map;

FLOODING SOURCE & REVISED REACH

Tributary 3 Sacate Blanco Arroyo - from approximately 150 feet downstream of 98th Street SW to the downstream side of Morrissey Street SW.

SUMMARY OF REVISIONS

Flooding Source	Effective Flooding	Revised Flooding	Increases	Decreases
Tributary 3 Sacate Blanco Arroyo	Zone A	Removed	NONE	YES

* BFEs - Base Flood Elevations

DETERMINATION

This document provides the determination from the Department of Homeland Security's Federal Emergency Management Agency (FEMA) regarding a request for a Letter of Map Revision (LOMR) for the area described above. Using the information submitted, we have determined that a revision to the flood hazards depicted in the Flood Insurance Study (FIS) report and/or National Flood Insurance Program (NFIP) map is warranted. This document revises the effective NFIP map, as indicated in the attached documentation. Please use the enclosed annotated map panels revised by this LOMR for floodplain management purposes and for all flood insurance policies and renewals in your community.

This determination is based on the flood data presently available. The enclosed documents provide additional information regarding this determination. If you have any questions about this document, please contact the FEMA Map Information eXchange toll free at 1-877-336-2627 (1-877-FEMA MAP) or by letter addressed to the LOMC Clearinghouse, 847 South Pickett Street, Alexandria, VA 22304-4605. Additional Information about the NFIP is available on our website at <http://www.fema.gov/nfip>.

Patrick "Rick" F. Sacbabit, P.E., Branch Chief
Engineering Services Branch
Federal Insurance and Mitigation Administration

16-06-2885P

102-D-A



Federal Emergency Management Agency

Washington, D.C. 20472

LETTER OF MAP REVISION DETERMINATION DOCUMENT (CONTINUED)

COMMUNITY INFORMATION

APPLICABLE NFIP REGULATIONS/COMMUNITY OBLIGATION

We have made this determination pursuant to Section 206 of the Flood Disaster Protection Act of 1973 (P.L. 93-234) and in accordance with the National Flood Insurance Act of 1968, as amended (Title XIII of the Housing and Urban Development Act of 1968, P.L. 90-448), 42 U.S.C. 4001-4128, and 44 CFR Part 65. Pursuant to Section 1361 of the National Flood Insurance Act of 1968, as amended, communities participating in the NFIP are required to adopt and enforce floodplain management regulations that meet or exceed NFIP criteria. These criteria, including adoption of the FIS report and FIRM, and the modifications made by this LOMR, are the minimum requirements for continued NFIP participation and do not supersede more stringent State/Commonwealth or local requirements to which the regulations apply.

COMMUNITY REMINDERS

We based this determination on the 1-percent-annual-chance discharges computed in the submitted hydrologic model. Future development of projects upstream could cause increased discharges, which could cause increased flood hazards. A comprehensive restudy of your community's flood hazards would consider the cumulative effects of development on discharges and could, therefore, indicate that greater flood hazards exist in this area.

Your community must regulate all proposed floodplain development and ensure that permits required by Federal and/or State/Commonwealth law have been obtained. State/Commonwealth or community officials, based on knowledge of local conditions and in the interest of safety, may set higher standards for construction or may limit development in floodplain areas. If your State/Commonwealth or community has adopted more restrictive or comprehensive floodplain management criteria, those criteria take precedence over the minimum NFIP requirements.

We will not print and distribute this LOMR to primary users, such as local insurance agents or mortgage lenders; instead, the community will serve as a repository for the new data. We encourage you to disseminate the information in this LOMR by preparing a news release for publication in your community's newspaper that describes the revision and explains how your community will provide the data and help interpret the NFIP maps. In that way, interested persons, such as property owners, insurance agents, and mortgage lenders, can benefit from the information.

This determination is based on the flood data presently available. The enclosed documents provide additional information regarding this determination. If you have any questions about this document, please contact the FEMA Map Information eXchange toll free at 1-877-336-2627 (1-877-FEMA MAP) or by letter addressed to the LOMC Clearinghouse, 847 South Pickett Street, Alexandria, VA 22304-4605. Additional Information about the NFIP is available on our website at <http://www.fema.gov/nfip>.

A handwritten signature in black ink, appearing to read "Rick F. Sacbbit".

Patrick "Rick" F. Sacbbit, P.E., Branch Chief
Engineering Services Branch
Federal Insurance and Mitigation Administration



Federal Emergency Management Agency

Washington, D.C. 20472

LETTER OF MAP REVISION DETERMINATION DOCUMENT (CONTINUED)

We have designated a Consultation Coordination Officer (CCO) to assist your community. The CCO will be the primary liaison between your community and FEMA. For information regarding your CCO, please contact:

Ms. Sandy Keefe
Director, Mitigation Division
Federal Emergency Management Agency, Region VI
Federal Regional Center, Room 206
800 North Loop 288
Denton, TX 76209
(940) 898-5127

STATUS OF THE COMMUNITY NFIP MAPS

We will not physically revise and republish the FIRM for your community to reflect the modifications made by this LOMR at this time. When changes to the previously cited FIRM panels warrant physical revision and republication in the future, we will incorporate the modifications made by this LOMR at that time.

This determination is based on the flood data presently available. The enclosed documents provide additional information regarding this determination. If you have any questions about this document, please contact the FEMA Map Information eXchange toll free at 1-877-336-2627 (1-877-FEMA MAP) or by letter addressed to the LOMC Clearinghouse, 847 South Pickett Street, Alexandria, VA 22304-4605. Additional Information about the NFIP is available on our website at <http://www.fema.gov/nfip>.

A handwritten signature in black ink, appearing to read "Rick Sacibit".

Patrick "Rick" F. Sacibit, P.E., Branch Chief
Engineering Services Branch
Federal Insurance and Mitigation Administration



Federal Emergency Management Agency
Washington, D.C. 20472

**LETTER OF MAP REVISION
DETERMINATION DOCUMENT (CONTINUED)**

PUBLIC NOTIFICATION OF REVISION

A notice of changes will be published in the *Federal Register*. This information also will be published in your local newspaper on or about the dates listed below, and through FEMA's Flood Hazard Mapping website at

https://www.floodmaps.fema.gov/fhm/bfe_status/bfe_main.asp

LOCAL NEWSPAPER

Name: *Albuquerque Journal*

Dates: October 31, 2016 and November 7, 2016

Within 90 days of the second publication in the local newspaper, any interested party may request that we reconsider this determination. Any request for reconsideration must be based on scientific or technical data. Therefore, this letter will be effective only after the 90-day appeal period has elapsed and we have resolved any appeals that we receive during this appeal period. Until this LOMR is effective, the revised flood hazard determination presented in this LOMR may be changed.

This determination is based on the flood data presently available. The enclosed documents provide additional information regarding this determination. If you have any questions about this document, please contact the FEMA Map Information eXchange toll free at 1-877-336-2627 (1-877-FEMA MAP) or by letter addressed to the LOMC Clearinghouse, 847 South Pickett Street, Alexandria, VA 22304-4605. Additional Information about the NFIP is available on our website at <http://www.fema.gov/nfip>.

A handwritten signature in black ink, appearing to read "Rick Sacbbit".

Patrick "Rick" F. Sacbbit, P.E., Branch Chief
Engineering Services Branch
Federal Insurance and Mitigation Administration

JOINS PANEL 0317

City of Albuquerque
350002

Tributary 1 Sacate Blanco Arroyo

1%-ANNUAL-CHANCE
FLOOD DISCHARGE
CONTAINED IN STRUCTURE

98TH ST SW

**REVISED
AREA**

COLOBEL AV SW

ZONE A

MORRISSEY ST SW

HILGENBERG LN SW

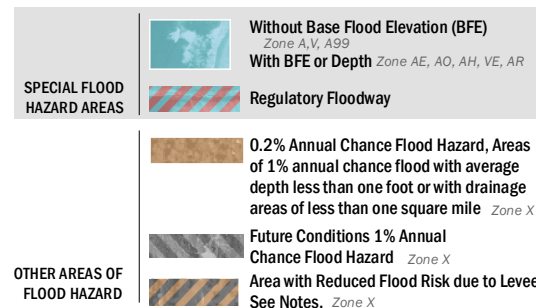
35° 01' 52.5"

106° 45' 00"

JOINS PANEL 0338

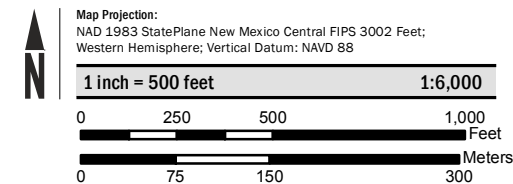
3 41' 000m E

*Tributary 3
Sacate Blanco
Arroyo*



SCALE

NOTE: BASEMAP IMAGERY WAS
OBTAINED FROM USGS IN 2010



NATIONAL FLOOD INSURANCE PROGRAM
FLOOD INSURANCE RATE MAP

BERNALILLO COUNTY,
NEW MEXICO
and Incorporated Areas

PANEL 336 OF 825

Panel Contains:

COMMUNITY	NUMBER	PANEL	SUFFIX
ALBUQUERQUE, CITY OF	350002	0336	H
BERNALILLO COUNTY UNINCORPORATED AREAS	350001	0336	H

**REVISED TO
REFLECT LOMR
EFFECTIVE: March 7, 2017**

VERSION NUMBER

2.1.3.0

MAP NUMBER

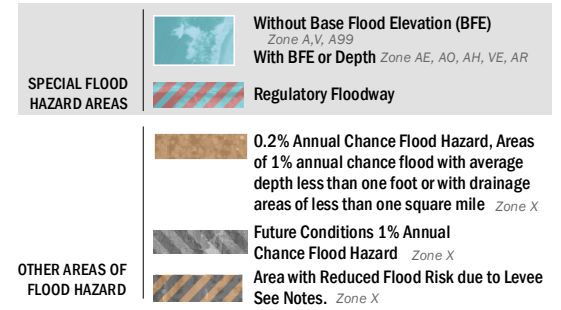
35001C0336H

MAP REVISED

AUGUST 16, 2012

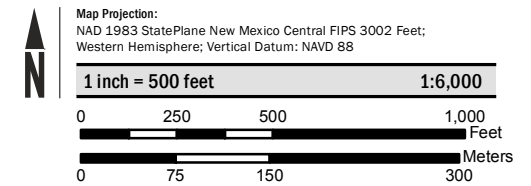
106° 45' 00"
35° 01' 52.5"

JOINS PANEL 0336



SCALE

NOTE: BASEMAP IMAGERY WAS OBTAINED FROM USGS IN 2010



FEMA
National Flood Insurance Program

**NATIONAL FLOOD INSURANCE PROGRAM
FLOOD INSURANCE RATE MAP**

BERNALILLO COUNTY,
NEW MEXICO
and Incorporated Areas

PANEL 338 OF 825

Panel Contains:

COMMUNITY	NUMBER	PANEL	SUFFIX
ALBUQUERQUE, CITY OF	350002	0338	H
BERNALILLO COUNTY UNINCORPORATED AREAS	350001	0338	H

**REVISED TO
REFLECT LOMR
EFFECTIVE: March 7, 2017**

VERSION NUMBER
2.1.3.0

MAP NUMBER
35001C0338H

MAP REVISED
AUGUST 16, 2012

JOINS PANEL 0319

1465000 FT

