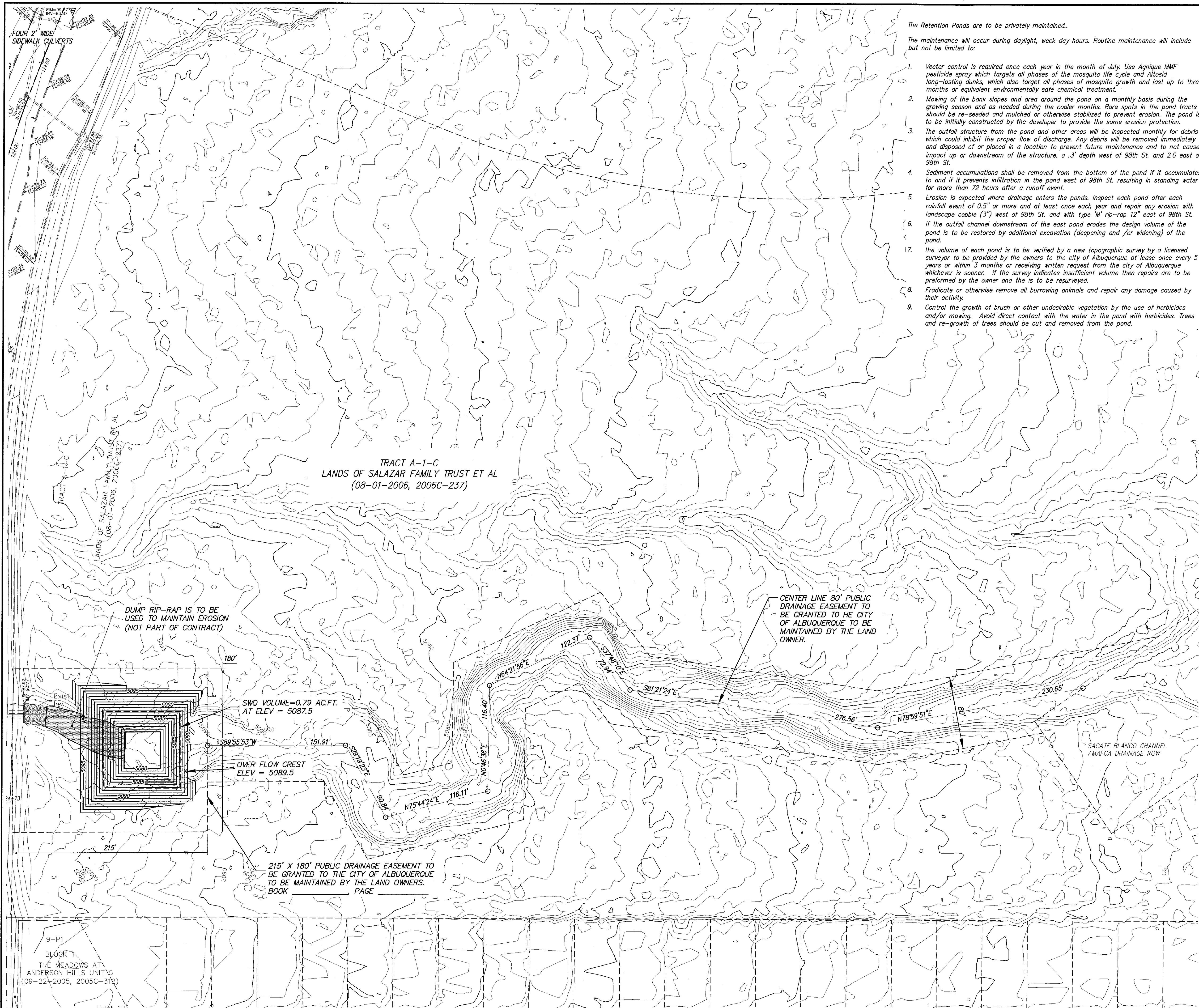


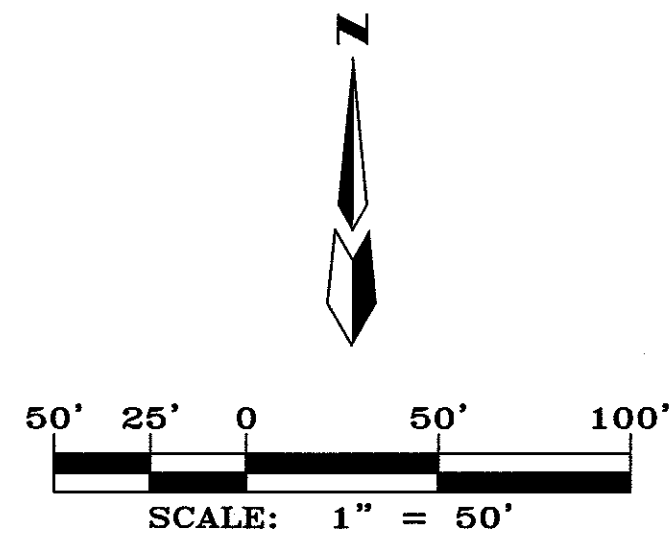
P:\AS\DOB\AL5003 Lands of Salazar Grade & Drain\AL5003 BSGNS-2.dwg, 9/18/2016 2:19:09 PM, 955



The Retention Ponds are to be privately maintained.

The maintenance will occur during daylight, week day hours. Routine maintenance will include but not be limited to:

1. Vector control is required once each year in the month of July. Use Agnique MMF pesticide spray which targets all phases of the mosquito life cycle and Altosid long-lasting dust, which also target all phases of mosquito growth and last up to three months or equivalent environmentally safe chemical treatment.
2. Mowing of the bank slopes and area around the pond on a monthly basis during the growing season and as needed during the cooler months. Bare spots in the pond tracts should be re-seeded and mulched or otherwise stabilized to prevent erosion. The pond is to be initially constructed by the developer to provide the same erosion protection.
3. The outfall structure from the pond and other areas will be inspected monthly for debris which could inhibit the proper flow of discharge. Any debris will be removed immediately and disposed of or placed in a location to prevent future maintenance and to not cause impact up or downstream of the structure, a .3' depth west of 98th St. and 2.0 east of 98th St.
4. Sediment accumulations shall be removed from the bottom of the pond if it accumulates to and if it prevents infiltration in the pond west of 98th St. resulting in standing water for more than 72 hours after a runoff event.
5. Erosion is expected where drainage enters the ponds. Inspect each pond after each rainfall event of 0.5" or more and at least once each year and repair any erosion with landscape cobble (3") west of 98th St. and with type 'M' rip-rap 12" east of 98th St.
6. If the outfall channel downstream of the east pond erodes the design volume of the pond is to be restored by additional excavation (deepening and /or widening) of the pond.
7. The volume of each pond is to be verified by a new topographic survey by a licensed surveyor to be provided by the owners to the city of Albuquerque at least once every 5 years or within 3 months or receiving written request from the city of Albuquerque whichever is sooner. If the survey indicates insufficient volume then repairs are to be performed by the owner and the is to be resurveyed.
8. Eradicate or otherwise remove all burrowing animals and repair any damage caused by their activity.
9. Control the growth of brush or other undesirable vegetation by the use of herbicides and/or mowing. Avoid direct contact with the water in the pond with herbicides. Trees and re-growth of trees should be cut and removed from the pond.



CERTIFICATE OF SUBSTANTIAL COMPLIANCE

dmg MARK GOODWIN & ASSOCIATES, P.A.
CONSULTING ENGINEERS
P.O. BOX 90606
ALBUQUERQUE, NEW MEXICO 87199
OFFICE (505) 828-2200, FAX (505) 797-9539

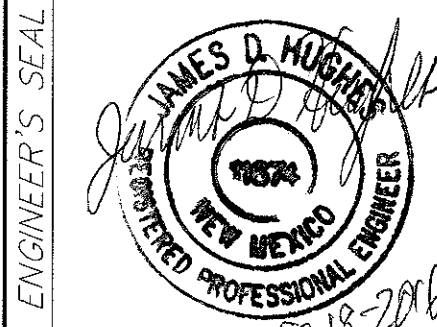


CITY OF ALBUQUERQUE
PLANNING DEPARTMENT

TITLE: **DESERT SANDS SUBDIVISION
DRAINAGE PLAN**

DESIGN REVIEW COMMITTEE	CITY ENGINEER APPROVAL	DATE	MO./DAY/YR.	MO./DAY/YR.

CITY PROJECT NO.	ZONE MAP NO.	SHEET	OF
		6	6



ENGINEER'S SEAL

SURVEY INFORMATION

FIELD NOTES	NO.	BY	DATE

BENCH MARKS

AGRS Aluminum Cap stamped "TRANS 1968" From the intersection of Central Avenue and 98th Street SW go south on 98th Street 1.2 miles to the intersection of 98th Street and Snow Vista Boulevard. Then go southeast along Snow Vista Boulevard and the co-op electric transmission line 0.85 miles to pylon numbered 52. The station is just east of this point. Geographic Position (NAD83), in feet N.M. State Plane Coordinates(Central Zone) N=1471885.503, E=1495145.466 Elevation (NAD83), in feet = 5121.089

AS BUILT INFORMATION

CONTRACTOR	WORK	DATE

MICRO-FILM INFORMATION

RECORDED BY	NO.	DATE