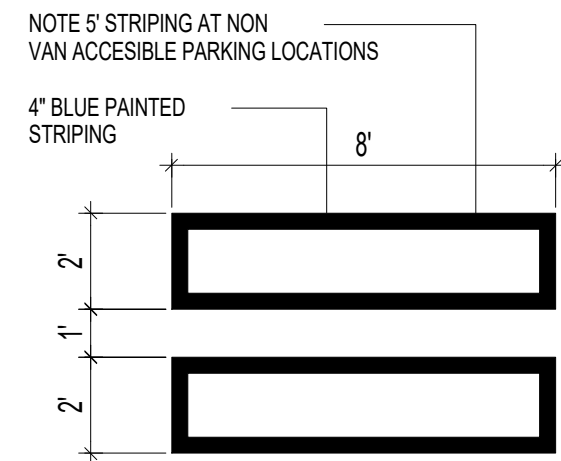
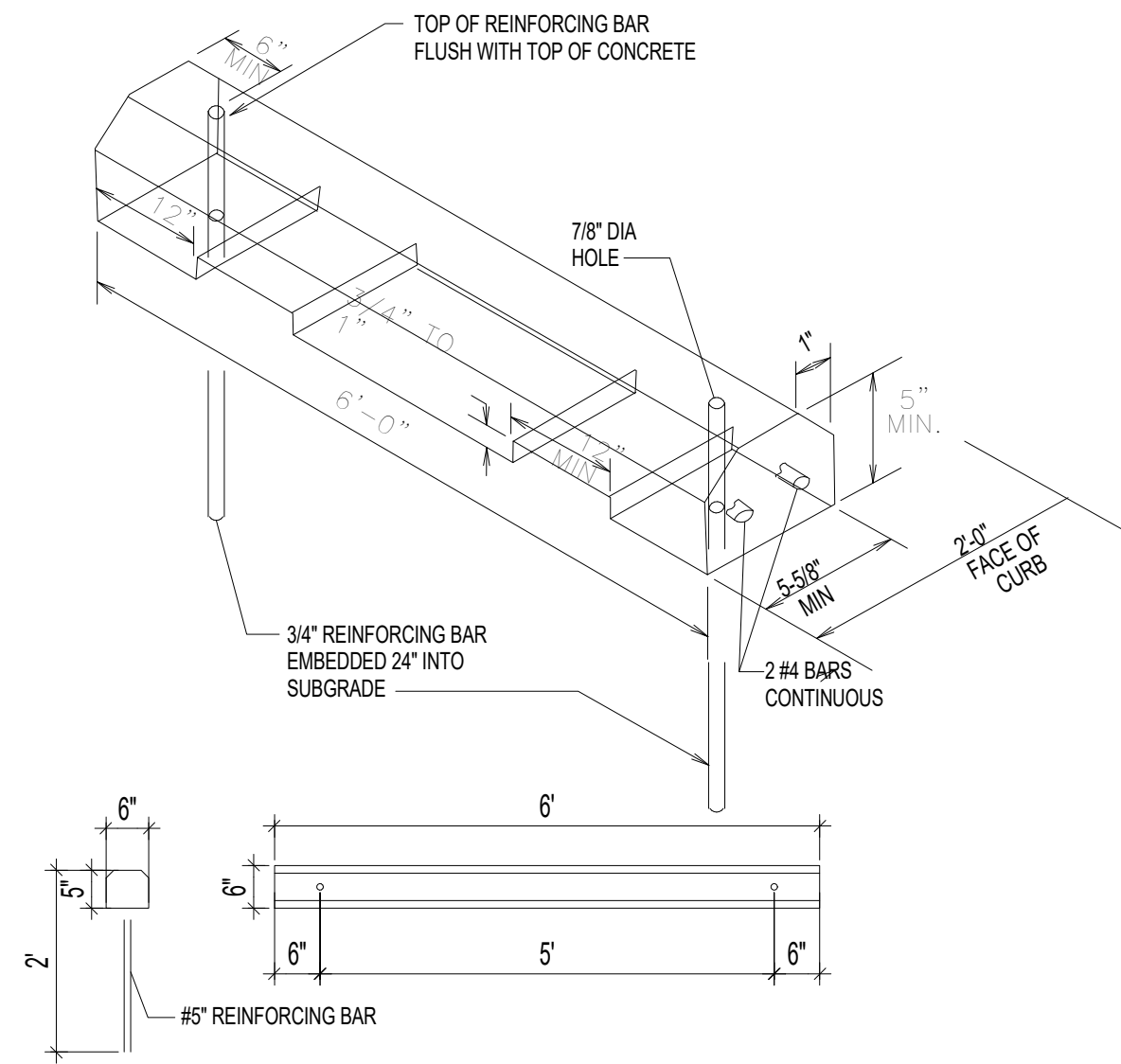


NOTE:  
BICYCLE RACK SHALL BE DESIGN ACCORDING TO THE FOLLOWING GUIDELINES:  
A. THE RACK SHALL BE MINIMUM 30" TALL AND 18" WIDE.  
B. THE BICYCLE FRAME SHALL BE SUPPORTED HORIZONTALLY AT 2 OR MORE PLACES.  
C. COMB/TOASTER RACKS ARE NOT ALLOWED.  
D. THE RACK SHALL BE DESIGNED TO SUPPORT THE BICYCLE IN AN UPRIGHT POSITION.  
E. THE RACK ALLOWS VARYING BICYCLE FRAME SIZES AND STYLES TO BE ATTACHED.  
F. THE USER IS NOT REQUIRED TO LIFT THE BICYCLE ONTO THE BICYCLE RACK.  
G. EACH BICYCLE PARKING SPACE IS ACCESSIBLE WITHOUT MOVING ANOTHER BICYCLE.

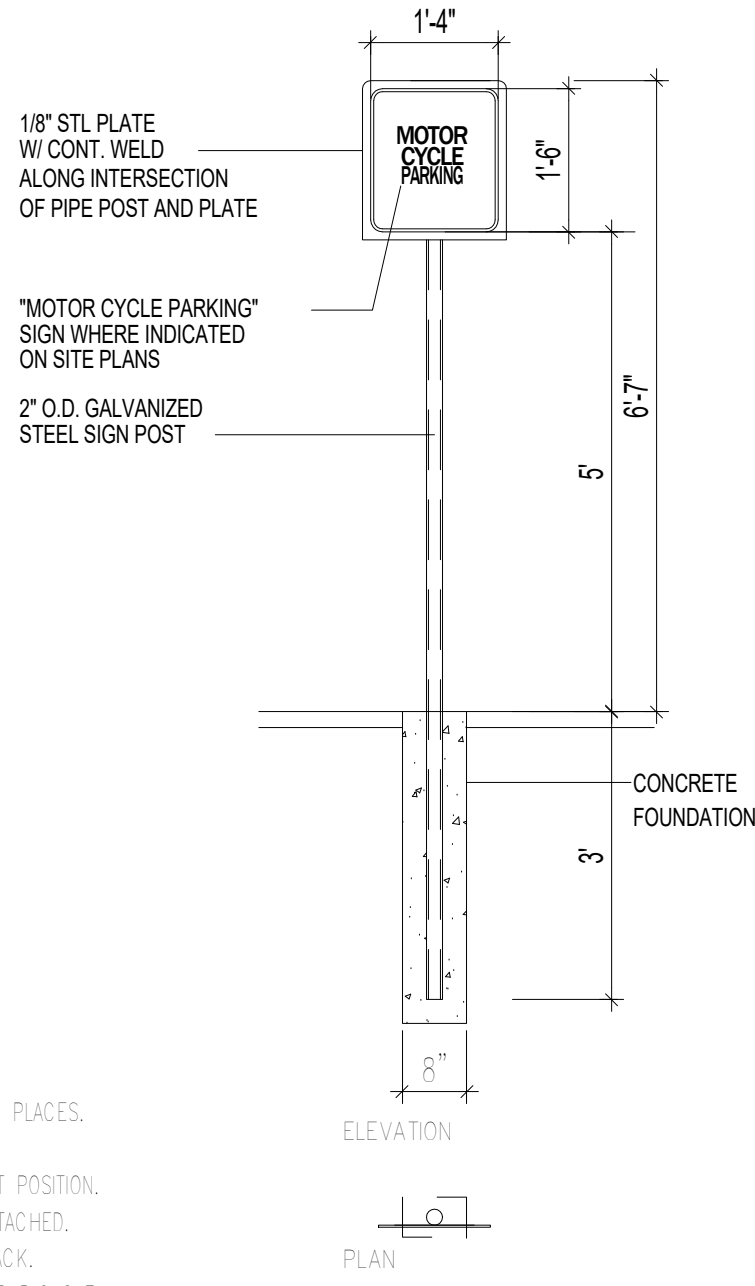
13 BIKE RACK  
N.T.S.



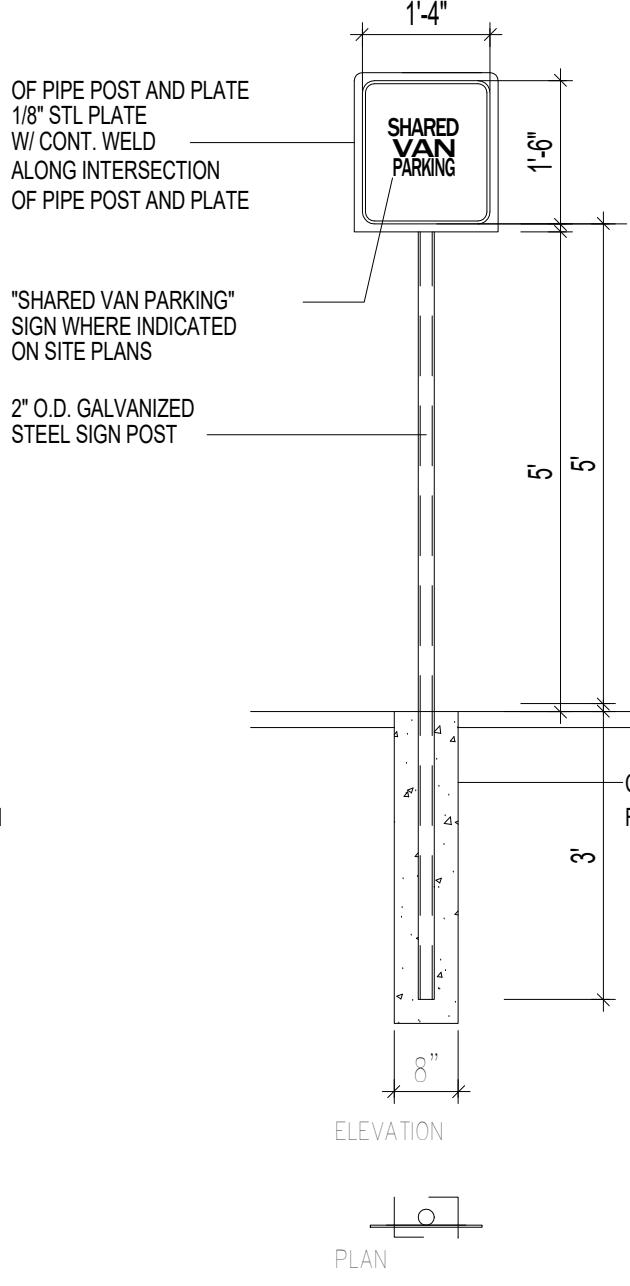
9 H.C PARKING-WALK PAINT DETAIL  
N.T.S.



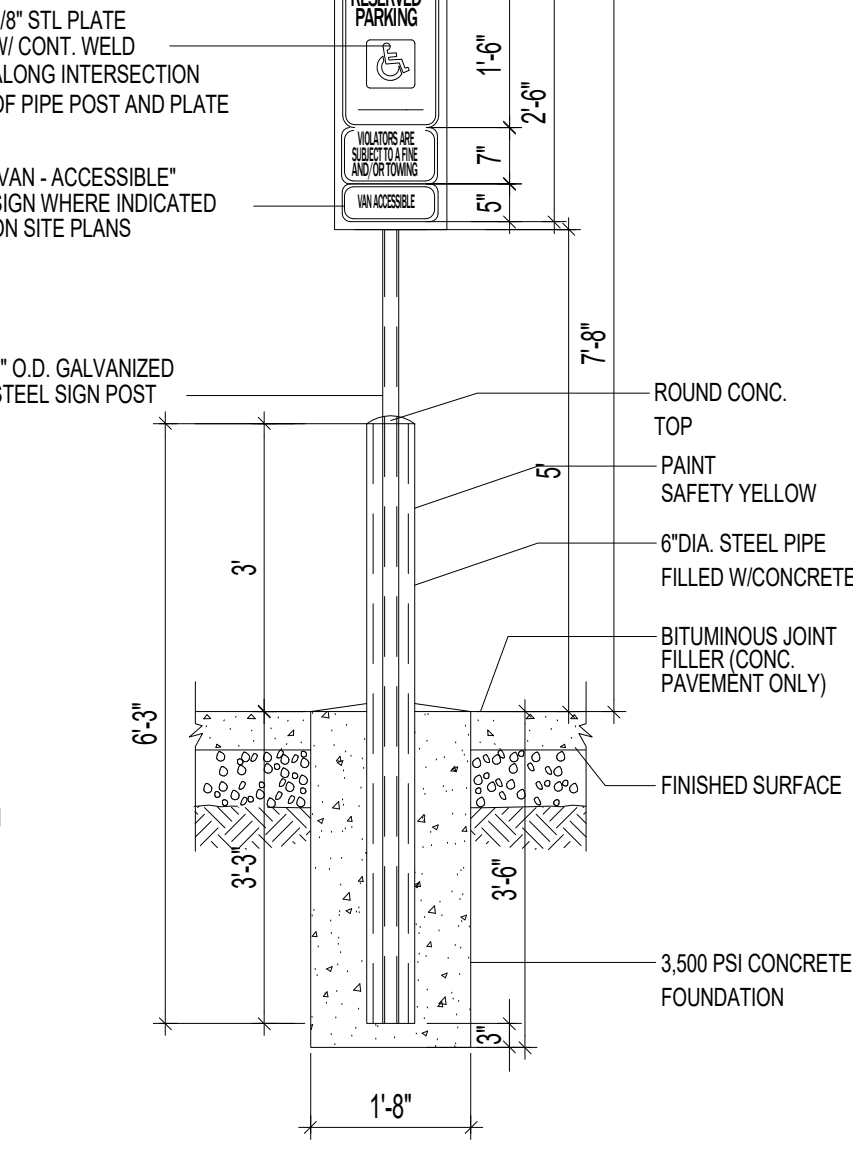
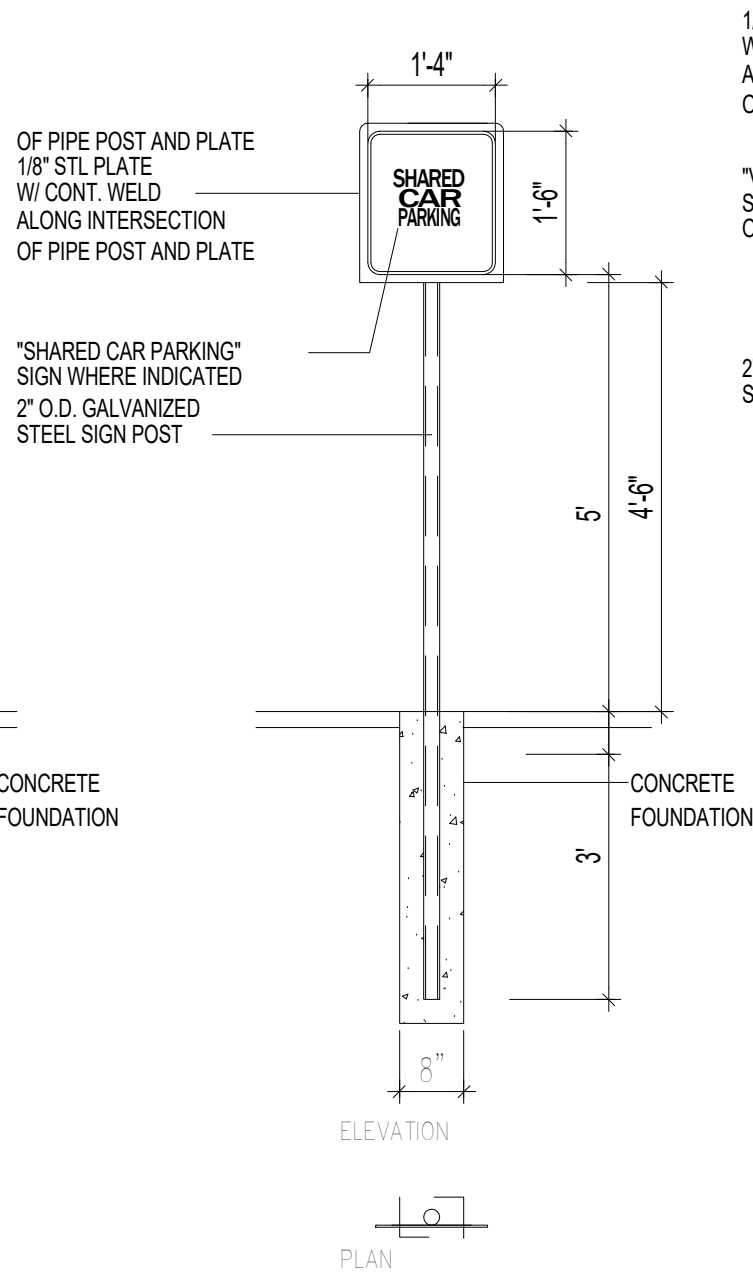
4 WHEEL STOP  
N.T.S.



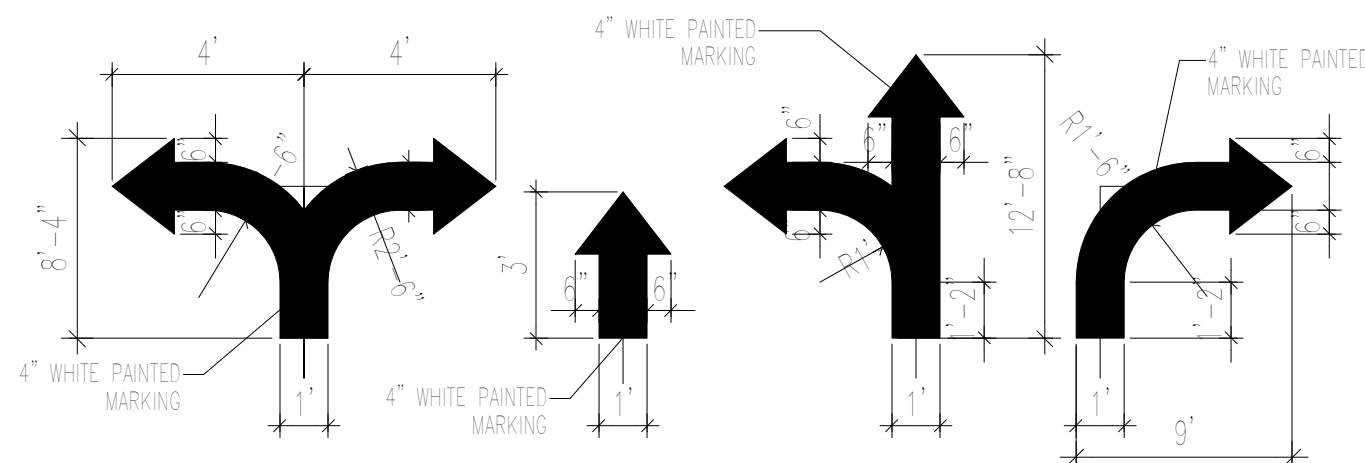
12 MISC. SIGNAGE  
N.T.S.



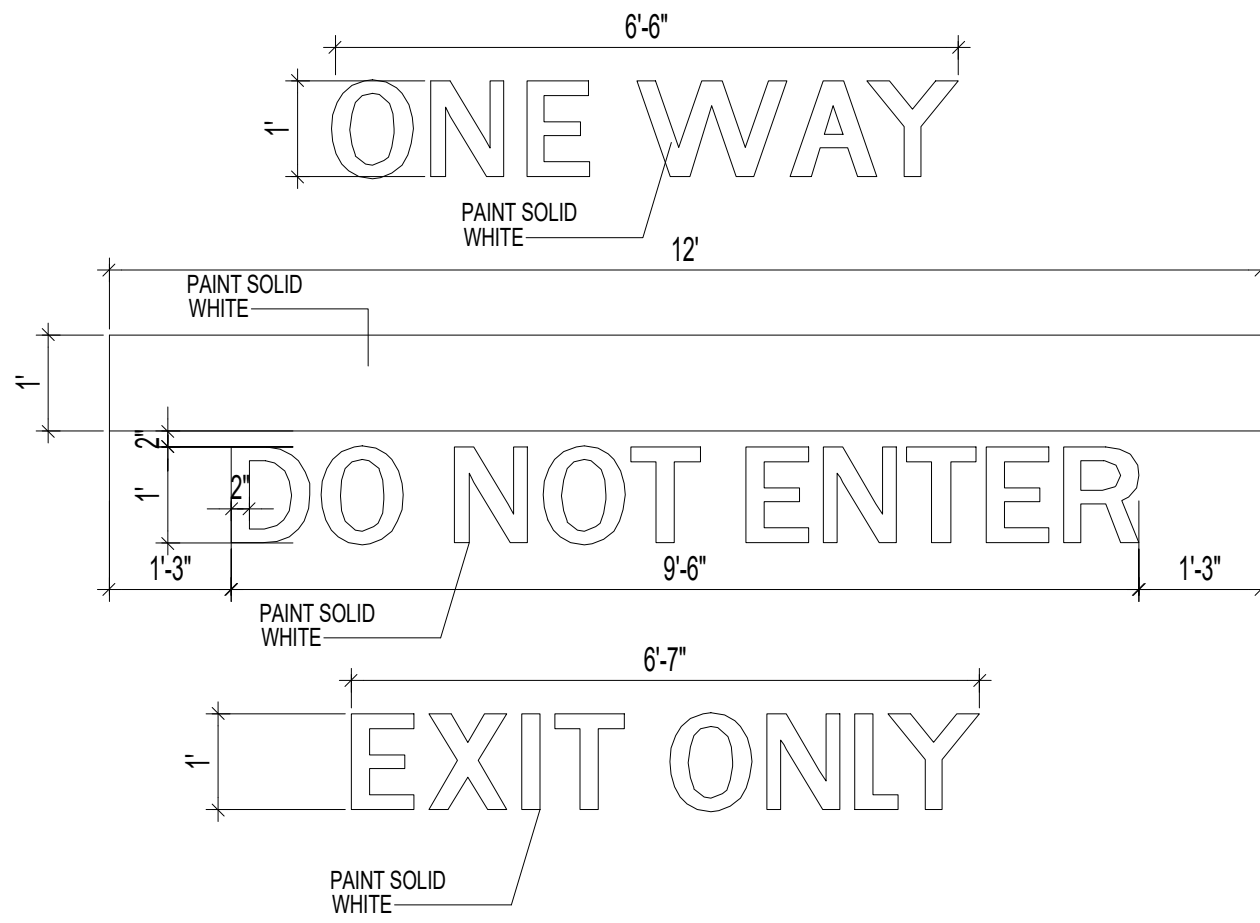
12A MISC. SIGNAGE  
N.T.S.



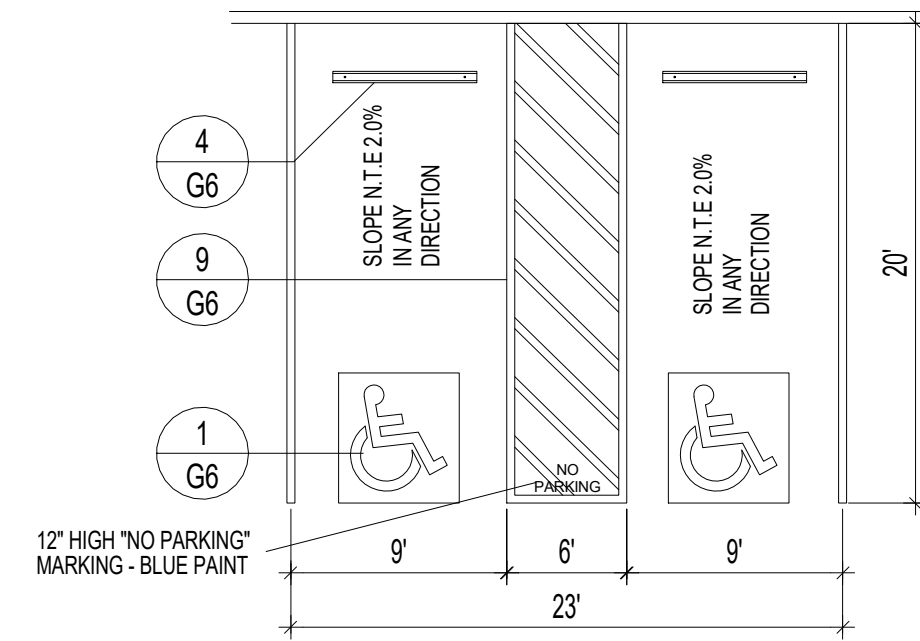
11 H.C SIGNAGE  
N.T.S.



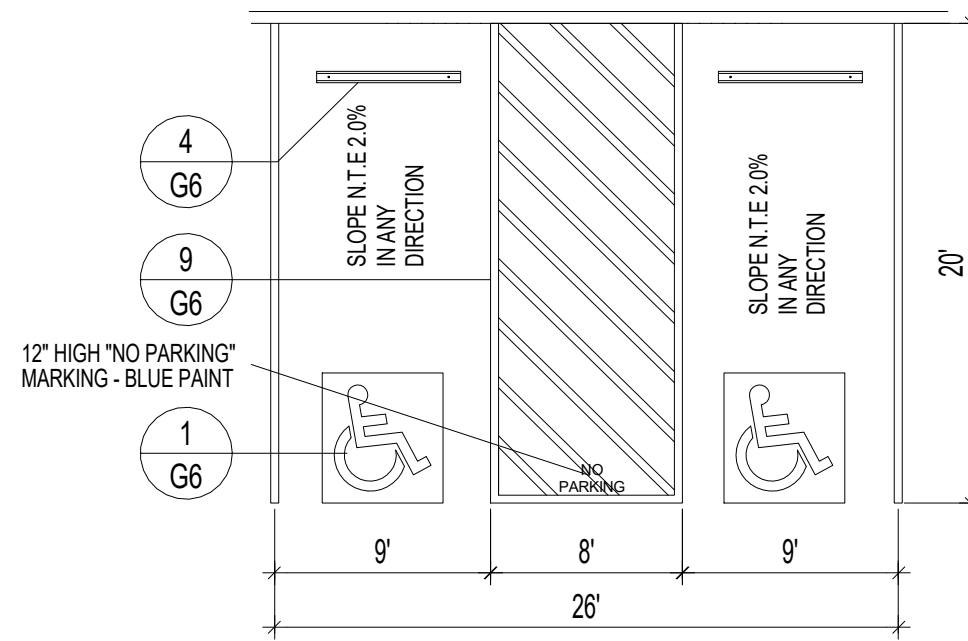
8 SITE DIRECTIONAL PAINT DETAIL  
N.T.S.



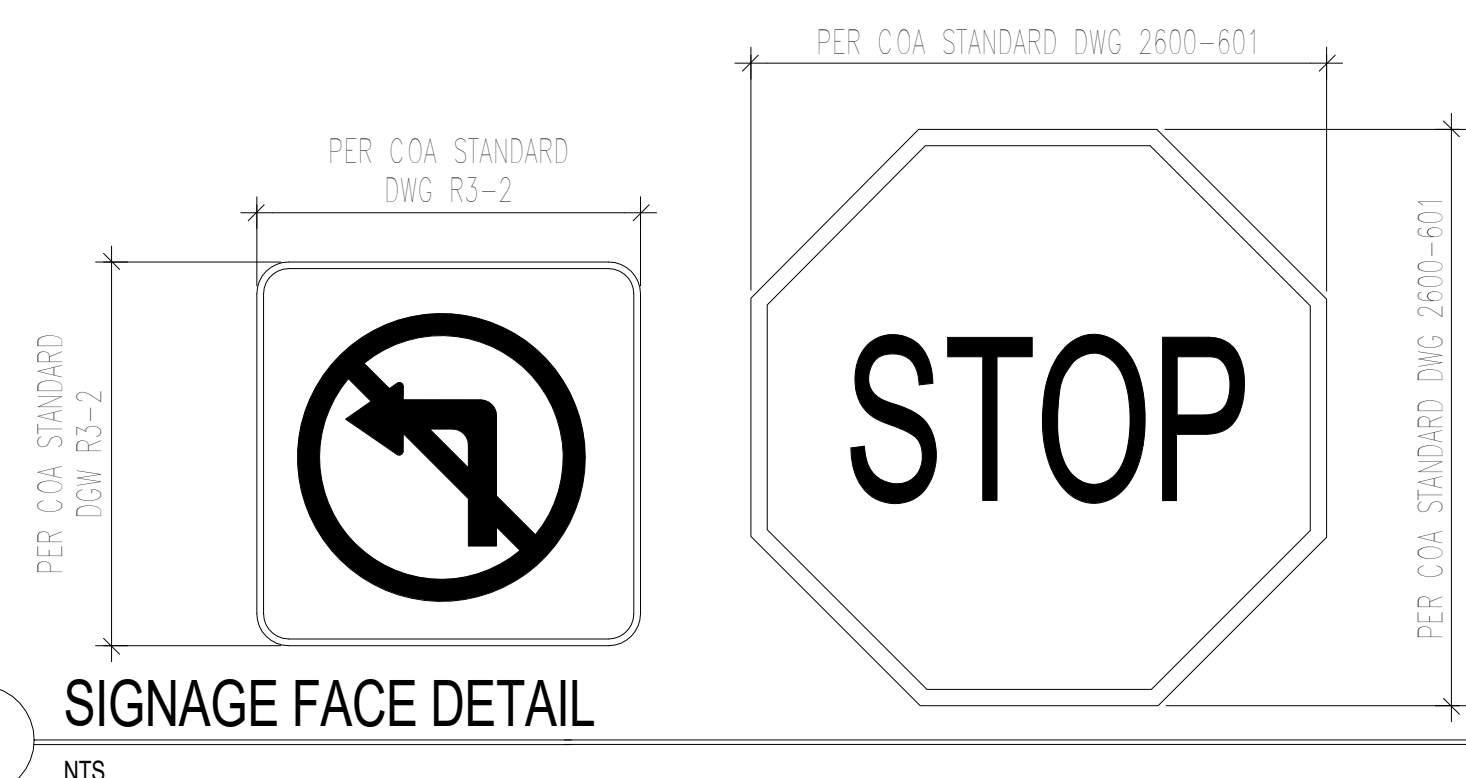
7 SITE DIRECTIONAL PAINT DETAIL  
N.T.S.



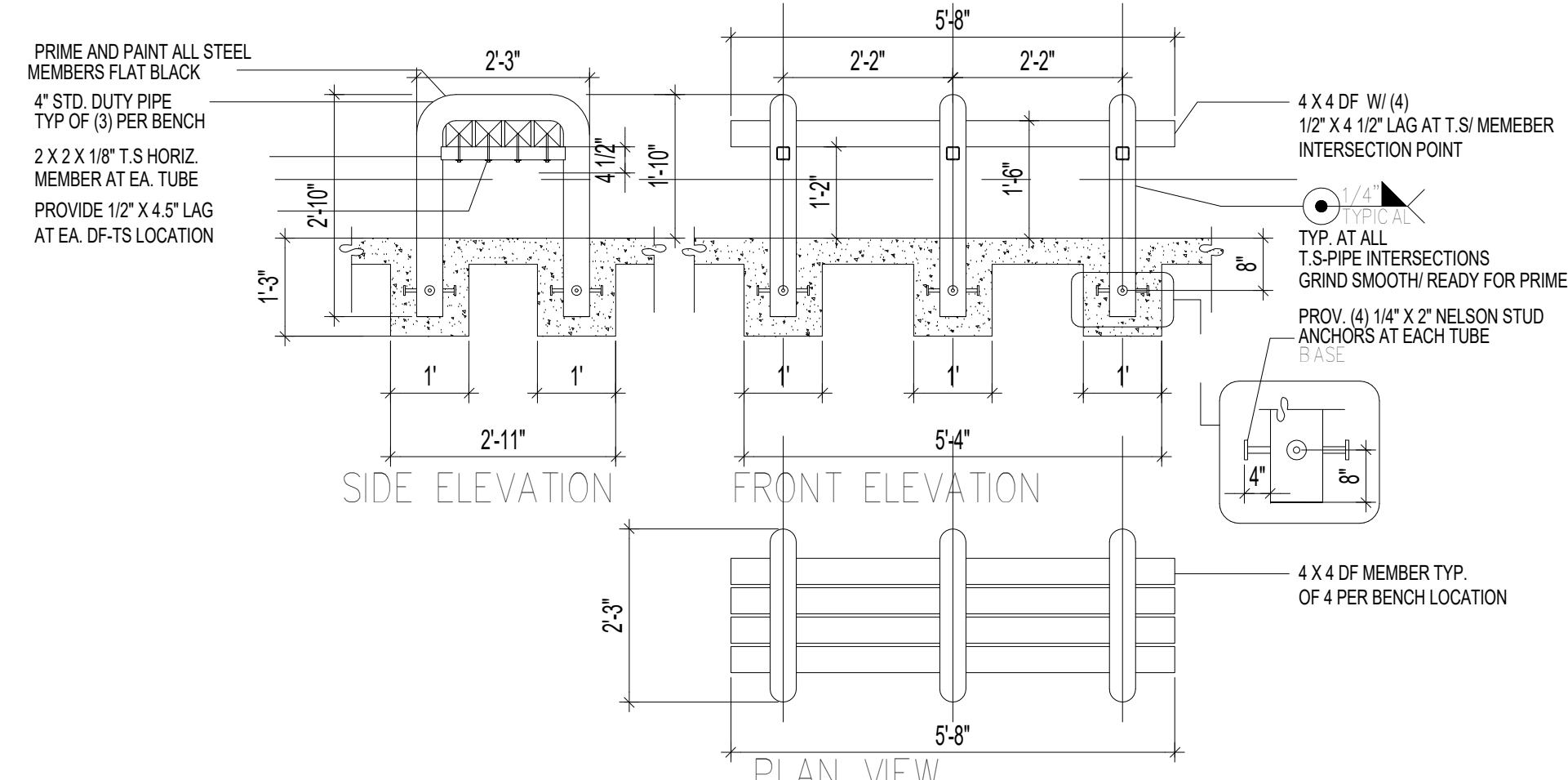
3 H.C PARKING PLAN DETAIL  
N.T.S.



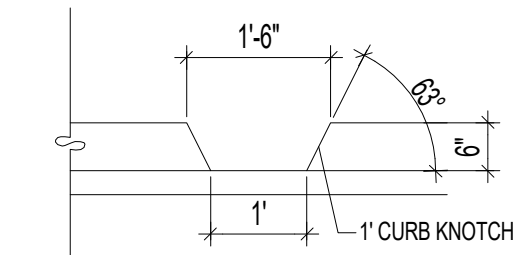
2 H.C PARKING PLAN DETAIL (VAN ACCESIBLE)  
N.T.S.



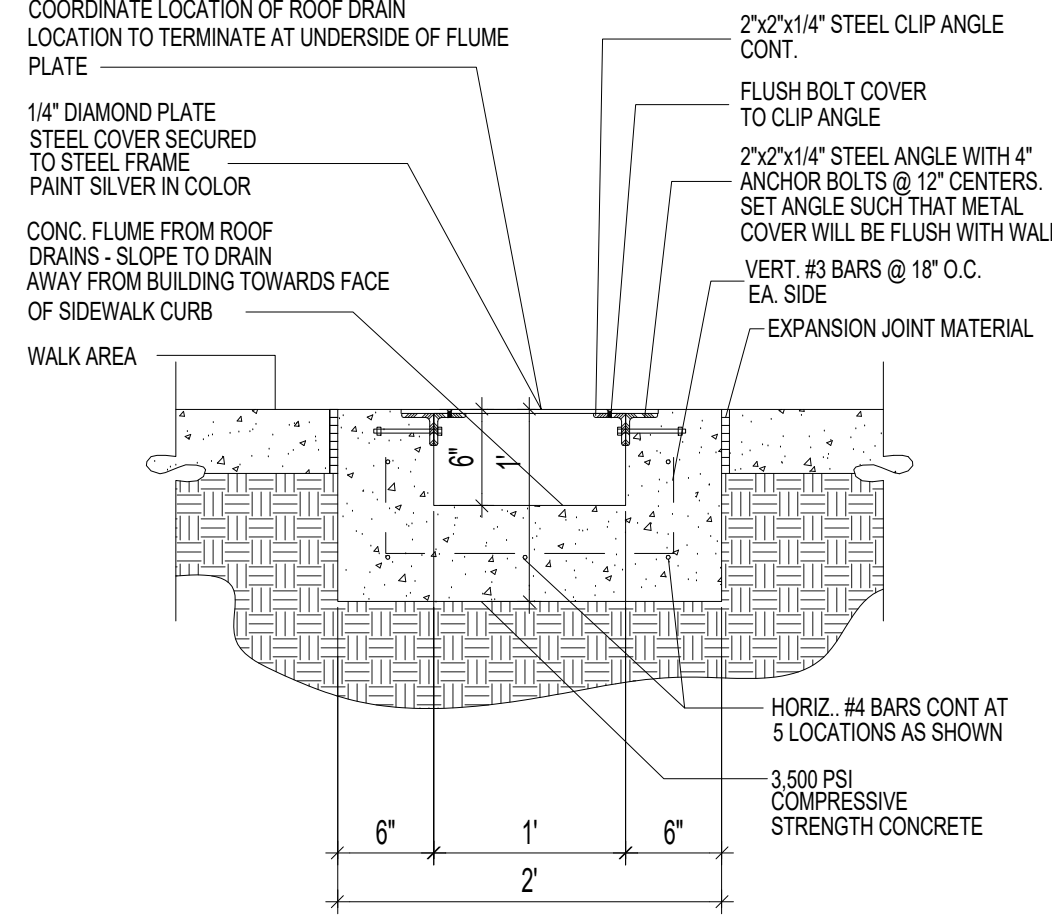
14 SIGNAGE FACE DETAIL  
N.T.S.



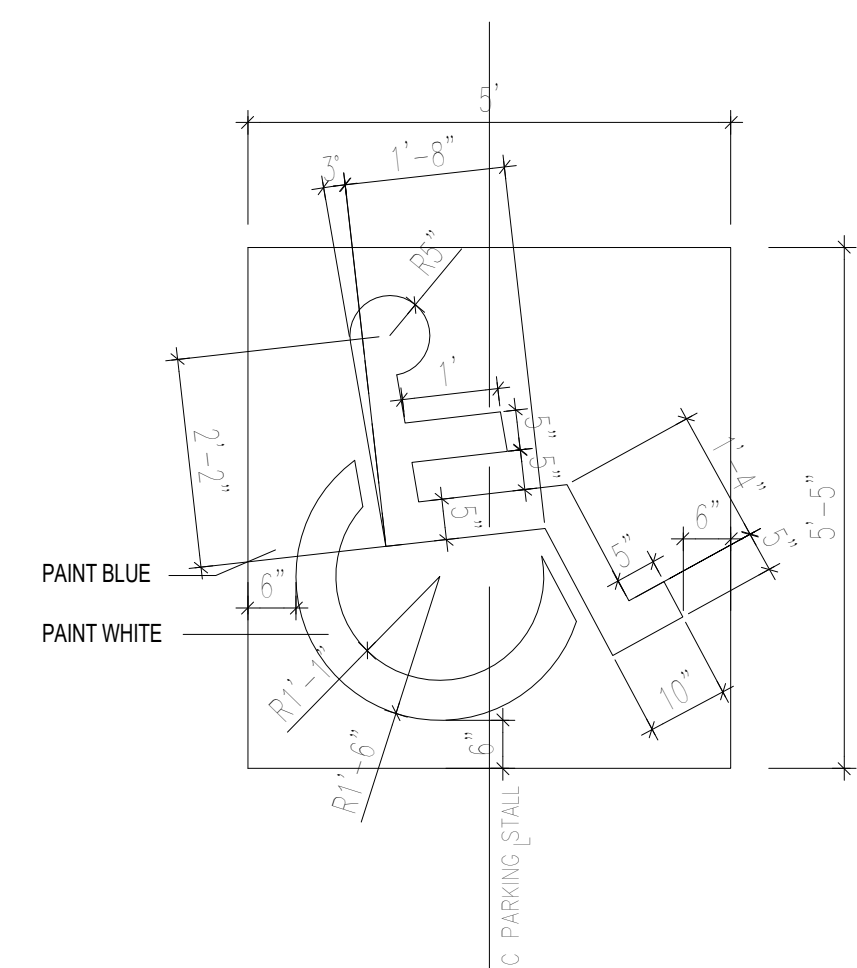
10 BENCH DETAIL  
N.T.S.



6 CURB NOTCH  
N.T.S.



5 CONCRETE FLUME DETAIL  
N.T.S.



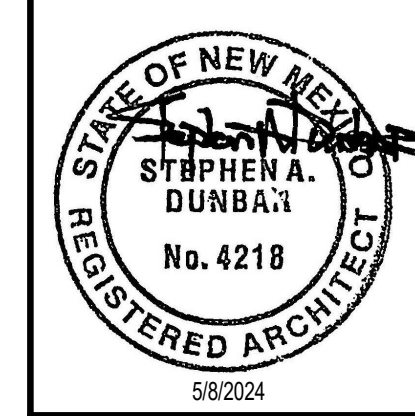
1 H.C SIGNAGE  
N.T.S.

PROJECT TITLE  
**EVENT CENTER SHELL**  
AIRTECH CT SE ALBUQUERQUE NM, 87106  
PROJECT MANAGER  
JOB NO.  
Project Number  
DRAWN BY:  
SHEET TITLE  
**SITE DETAILS**

DATE  
5/8/2024  
SCALE:  
**G6**



**MODULUS ARCHITECTS  
AND LAND USE PLANNING**  
8220 SAN PEDRO DR NE SUITE 520  
ALBUQUERQUE, NEW MEXICO 87113  
PHONE (505) 338-1499 FAX (505) 338-1498



REV	DATE	BY	REVISION