

NOTICE TO CONTRACTOR

- ALL WORK DETAILED ON THESE PLANS TO BE PERFORMED, EXCEPT AS OTHERWISE STATED OR PROVIDED HEREON, SHALL BE CONSTRUCTED IN ACCORDANCE WITH THE CITY OF ALBUQUERQUE INTERIM STANDARD SPECIFICATIONS FOR PUBLIC WORKS CONSTRUCTION, 1985.
- TWO WORKING DAYS PRIOR TO ANY EXCAVATION, CONTRACTOR MUST CONTACT LINE LOCATING SERVICE, 765-1234, FOR LOCATION OF EXISTING UTILITIES.
- PRIOR TO CONSTRUCTION, THE CONTRACTOR SHALL EXCAVATE AND VERIFY THE HORIZONTAL AND VERTICAL LOCATIONS OF ALL CONSTRUCTIONS. SHOULD A CONFLICT EXIST, THE CONTRACTOR SHALL NOTIFY THE ENGINEER SO THAT THE CONFLICT CAN BE RESOLVED WITH A MINIMUM AMOUNT OF DELAY.
- BACKFILL COMPACTION SHALL BE ACCORDING TO ARTERIAL STREET USE.
- MAINTENANCE OF THESE FACILITIES SHALL BE THE RESPONSIBILITY OF THE OWNER OF THE PROPERTY SERVED.
- CONTRACTOR IS RESPONSIBLE FOR EROSION CONTROL DURING THE CONSTRUCTION PHASE, INCLUDING ANY PROVISIONS THAT NEED TO BE TAKEN TO DIVERT ANY SEDIMENT FROM ENTERING THE CITY RIGHT OF WAY, I.E., WINDOWS, SILT FENCING, OR APPROVED EQUAL.
- CURB AND GUTTER SHOWN AS EXISTING AND NOT TO BE REMOVED UNDER THE CONTRACT WHICH IS DAMAGED OR DISPLACED BY THE CONTRACTOR SHALL BE REMOVED AND REPLACED BY THE CONTRACTOR AT HIS EXPENSE.
- WHEN CONSTRUCTION UNDER THIS PROJECT CONNECTS TO EXISTING IMPROVEMENTS, THE CONTRACTOR SHALL PROVIDE AN EASY RIDING CONNECTION.
- IF ANY UTILITY LINES, PIPELINES, OR UNDERGROUND UTILITY LINES ARE SHOWN ON THESE DRAWINGS, THEY ARE SHOWN IN AN APPROXIMATE MANNER ONLY, AND SUCH LINES MAY EXIST WHERE NONE ARE SHOWN. IF ANY SUCH EXISTING LINES ARE SHOWN, THE LOCATION IS BASED UPON INFORMATION PROVIDED BY THE OWNER OF SAID UTILITY, AND THE INFORMATION MAY BE INCOMPLETE, OR MAY BE OBSOLETE BY THE TIME CONSTRUCTION COMMENCES. THE ENGINEER HAS UNDERTAKEN NO FIELD VERIFICATION OF THE LOCATION, DEPTH, SIZE, OR TYPE OF EXISTING UTILITY LINES, PIPELINES, OR UNDERGROUND UTILITY LINES, MAKES NO REPRESENTATION PERTAINING THERETO, AND ASSUMES NO RESPONSIBILITY OR LIABILITY THEREFOR. THE CONTRACTOR SHALL INFORM ITSELF OF THE LOCATION OF ANY UTILITY LINE, PIPELINE, OR UNDERGROUND UTILITY LINES IN PLANNING AND CONDUCTING EXCAVATION, THE CONTRACTOR SHALL COMPLY WITH STATE STATUTES, MUNICIPAL AND LOCAL ORDINANCES, RULES AND REGULATIONS, IF ANY, PERTAINING TO THE LOCATION OF THESE LINES AND FACILITIES.

KEYED NOTES:

- RAISE TOP OF GRATE OF EXISTING STORM DRAIN INLET. SEE GENERAL NOTE NUMBER 1.
- CONSTRUCT SINGLE TYPE "D" STORM DRAIN INLET IN ACCORDANCE WITH CITY STANDARD DRAWING 2206. SEE GENERAL NOTE NUMBER 1.
- CONSTRUCT 12" SIDEWALK CULVERT IN ACCORDANCE WITH CITY STD. DWG. K-16.
- 26" 6" CURB CUTS @ 10-0" O.C. (TYP)
- 3/4" GRAVEL 2' WIDE X 6" DEEP AT EDGE OF ASPHALT.
- STANDARD CURB AND GUTTER MATCH EXISTING.

LEGEND:

- CONTOUR (NEW) — 06 —
CONTOUR (EXIST) — 06 —
SPOT ELEVATION (NEW) — + —
SPOT ELEVATION (EXIST) — + —

GENERAL NOTES:

- ALL CONSTRUCTION ON EXISTING STORM SEWER LINE TO BE CONSTRUCTED FROM APPROVED WORK ORDER DOCUMENTS FROM THE CITY OF ALBUQUERQUE.
- ADJUST ALL NEW AND EXISTING MANHOLES TO FINISH GRADE.

LEGAL DESCRIPTION:

A PORTION OF TRACT "G" MUNICIPAL ADDITION # 9 LOCATED IN THE SW 1/4 OF SECTION 1 T 9 N, R 1 E, NM 1M.

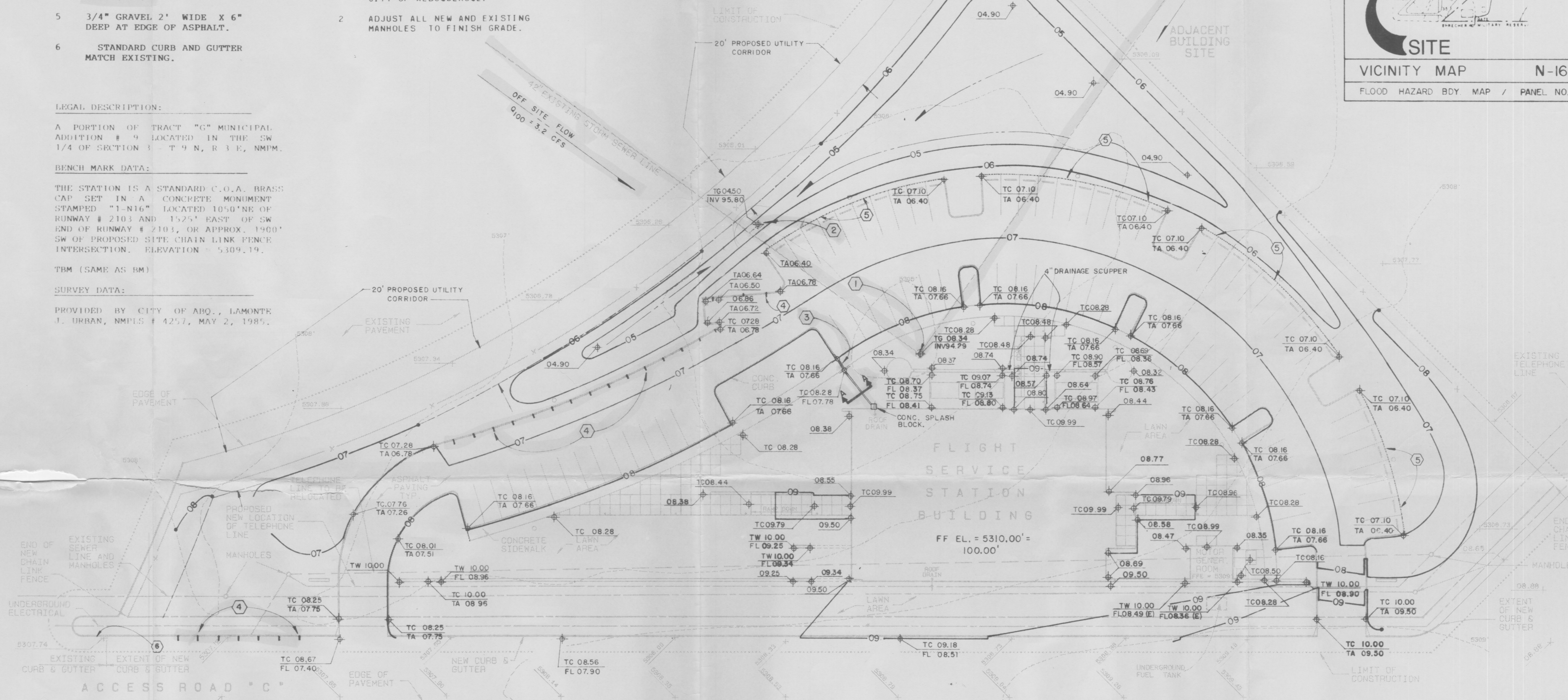
BENCH MARK DATA:

THE STATION IS A STANDARD C.O.A. BRASS CAP SET IN A CONCRETE MONUMENT STAMPED "1-N16" LOCATED 105' NE OF RUNWAY # 2101 AND 15.5' EAST OF SW END OF RUNWAY # 2101, OR APPROX. 1900' SW OF PROPOSED SITE CHAIN LINK FENCE INTERSECTION. ELEVATION = 5309.19.

TBM (SAME AS BM)

SURVEY DATA:

PROVIDED BY CITY OF ABO., LAMONTE J. URBAN, NMPLS # 4257, MAY 2, 1985.



GRADING PLAN
1"=30'-0"



SCALE IN FEET
1"=30'-0"

DRAINAGE PLAN

LOCATION AND DESCRIPTION:

The site is located off of Access Road "C" at the west end of the Albuquerque International Airport, in Albuquerque, New Mexico. The site, containing approximately 2.54 acres, is presently undeveloped and slopes from the perimeter to the center with an average slope of 1 percent. This site is not located within a flood zone.

EXISTING CONDITIONS:

Presently, on-site runoff is directed to the center of the site where an existing combination catchbasin/manhole is located. The runoff after entering the catchbasin/manhole is conveyed to the AMRCA South Diversion Channel through a series of conduits. Due to existing on-site elevations and off-site conditions, off-site runoff from property located to the East enters the site. This off-site runoff is directed to the catchbasin/manhole through an existing earthen swale.

PROPOSED CONDITIONS:

Proposed development of the site includes a building with related parking, a holding pond and landscaping. Due to proposed development, flows from the site will increase from 5.84 CFS to 7.86 CFS. The flows, due to present downstream conditions, will be routed to a holding pond and discharge into a new storm inlet which will be incorporated into the existing Storm Drainage System. This holding pond will allow the gradual "Bleed Off" of collected water into the new storm inlet. At this time, we reserve the right to remove the holding pond when downstream conditions improve. The existing catchbasin/manhole will be left in the same location but the top of grate elevation raised, allowing a minimal amount of runoff to enter it. The New Grading Plan will allow off-site runoff to continue to enter the site from the East. This off-site runoff will be directed into and detained by the Holding Pond to be later discharged into the Storm Drainage System.

CALCULATIONS:

Area = 2.54 acres
1 = 2.2 in./hr. Plate 22.2 D-2
6-hour, 100-year rainfall = 2.3 in. Plate 22.2 D-1
i = (2.2)(2.3) = 5.06 in./hr.

EXISTING ON-SITE CONDITIONS:

SURFACE TYPE	"C" VALUE	A (ACRES)	"C" X A
Streets, Drives, Walks	0.95	0.25	0.2375
Roofs	0.90		
Lawns & Landscaping	0.25		
Undeveloped	0.40	2.29	0.9160
TOTAL		2.54	1.1535

Q(100) = (0.454)(5.06)(2.54) = 5.8363 cfs
Q(10) = (0.657)(5.8363) = 3.8344 cfs
CN = 78 Plate 22.2 C-2
Direct Runoff = 0.7 in. Plate 22.2 C-4
V(100) = (0.7)(2.54)(43560)/12 = 6,454 cu. ft.
V(10) = (0.657)(6454) = 4240 cu. ft.

PROPOSED ON-SITE CONDITIONS:

SURFACE TYPE	"C" VALUE	A (ACRES)	"C" X A
Streets, Drives, Walks	0.95	0.8113	0.7707
Roofs	0.90	0.2439	0.2195
Lawns & Landscaping	0.25	0.2017	0.0504
Undeveloped	0.40	1.2811	0.5132
TOTAL		2.54	1.5538

Q(100) = (0.617)(5.06)(2.54) = 7.8618 cfs
Q(10) = (0.657)(7.8618) = 5.1652 cfs
CN = 84 Plate 22.2 C-3
Direct Runoff = 1.4 in. Plate 22.2 C-4
V(100) = (1.4)(2.54)(43560)/12 = 12,908 cu. ft.
V(10) = (0.657)(12,908) = 8480 cu. ft.

COMPOSITE

"C" = C₁X₁/A

"C" = 0.4541

"C" = 0.4541

"C" = 0.4541

"C" = 0.4541

"C" = 0.4541

"C" = 0.4541

"C" = 0.4541

"C" = 0.4541

"C" = 0.4541

"C" = 0.4541

"C" = 0.4541

"C" = 0.4541

"C" = 0.4541

"C" = 0.4541

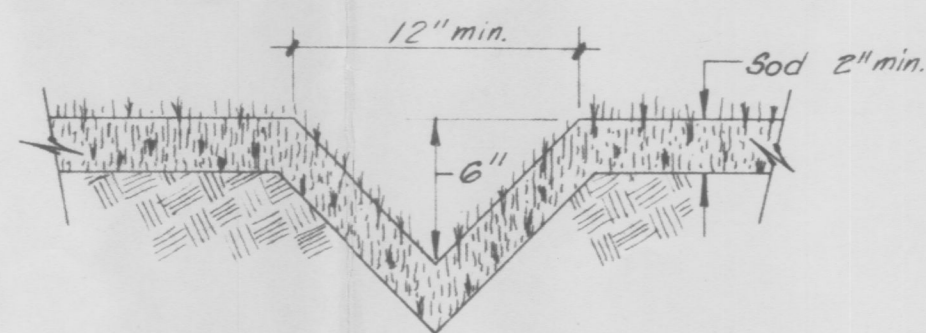
"C" = 0.4541

"C" = 0.4541

"C" = 0.4541

"C" = 0.4541

"C" = 0.4541



GRASS SWALE SEC. A-A

NTS

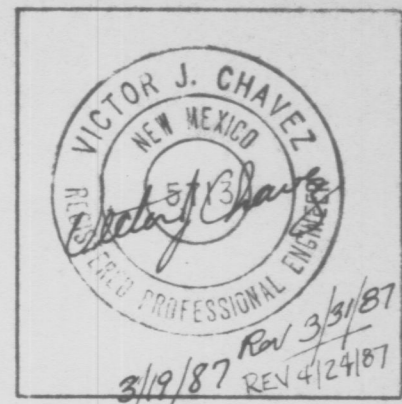
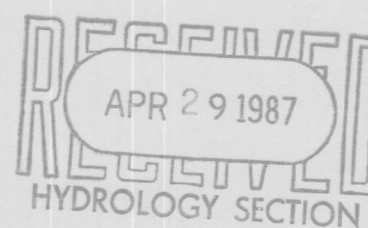
APPROVED FOR DRAINAGE

5-14-87

DATE

SIGNATURE

TITLE



ADDY & PRICKETT
ARCHITECTURE
PLANNING
INTERIOR DESIGN

109-EDITH-SE
ALBUQUERQUE-NM-87102
505-842-6370

FLIGHT SERVICE STATION BUILDING
ALBUQUERQUE INTERNATIONAL AIRPORT

DATE: 3/6/87
PROJECT: 86007
REVISIONS:

TITLE
GRADING PLAN

SHEET

C2.2

SHEET 2 OF 40