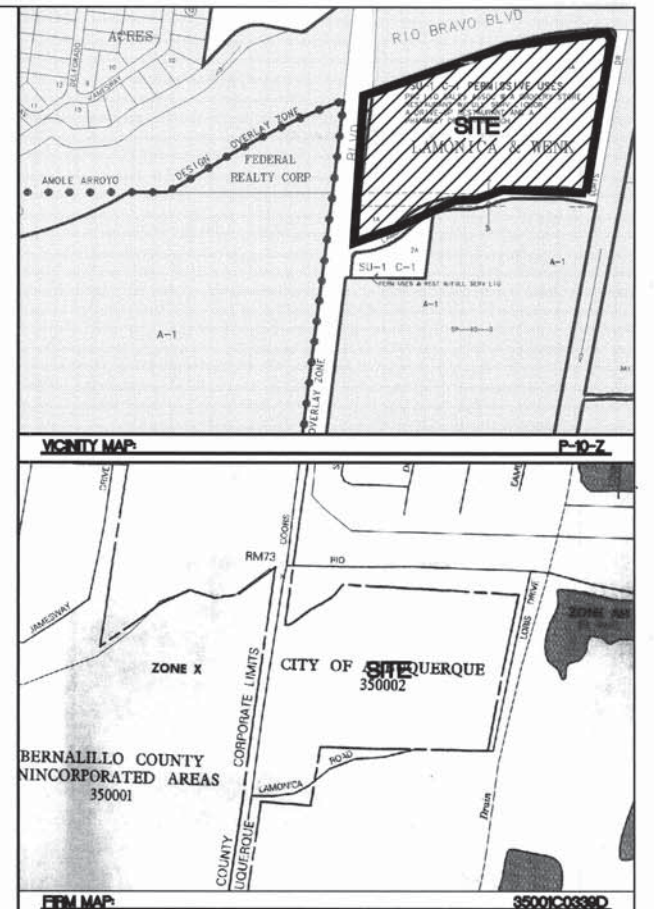


STORM SEWER PIPE INFORMATION

LOCATION	PIPE SIZE	LF	SLOPE
CB-1 TO MAIN LINE	8" PVC	188.55	0.60%
CB-2 TO MH-1	8" PVC	278.12	0.60%
CB-3 TO MH-1	8" PVC	241.22	0.60%
CB-4 TO MAIN LINE	8" PVC	17.93	0.60%
CB-5 TO MAIN LINE	8" PVC	307.81	0.60%
CB-6 TO MAIN LINE	8" PVC	53.39	0.60%
MH-1 TO MH-2	8" PVC	308.98	0.60%
CB-8 TO MH-3	8" PVC	24.77	0.60%
POND 7 TO MH-3	8" PVC	143.55	0.60%
MH-3 TO POND 9	8" PVC	116.90	0.60%
POND 9 TO MAIN LINE	8" PVC	43.00	0.50%
MH-2 TO MH-4	8" PVC	371.16	0.60%



LEGAL DESCRIPTION

TRACT 1A, LAMONICA AND WENK

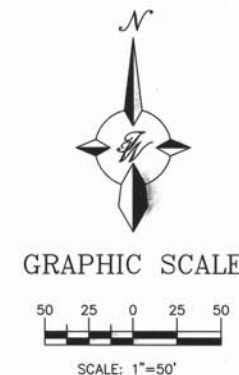
NOTES

1. ALL SPOT ELEVATIONS REPRESENT FLOWLINE ELEVATION UNLESS OTHERWISE NOTED.
2. SEE SHEETS 20-25 FOR DETAILS.
3. SEE SHEETS 6 AND 6A FOR STORM SEWER INFORMATION.

LEGEND

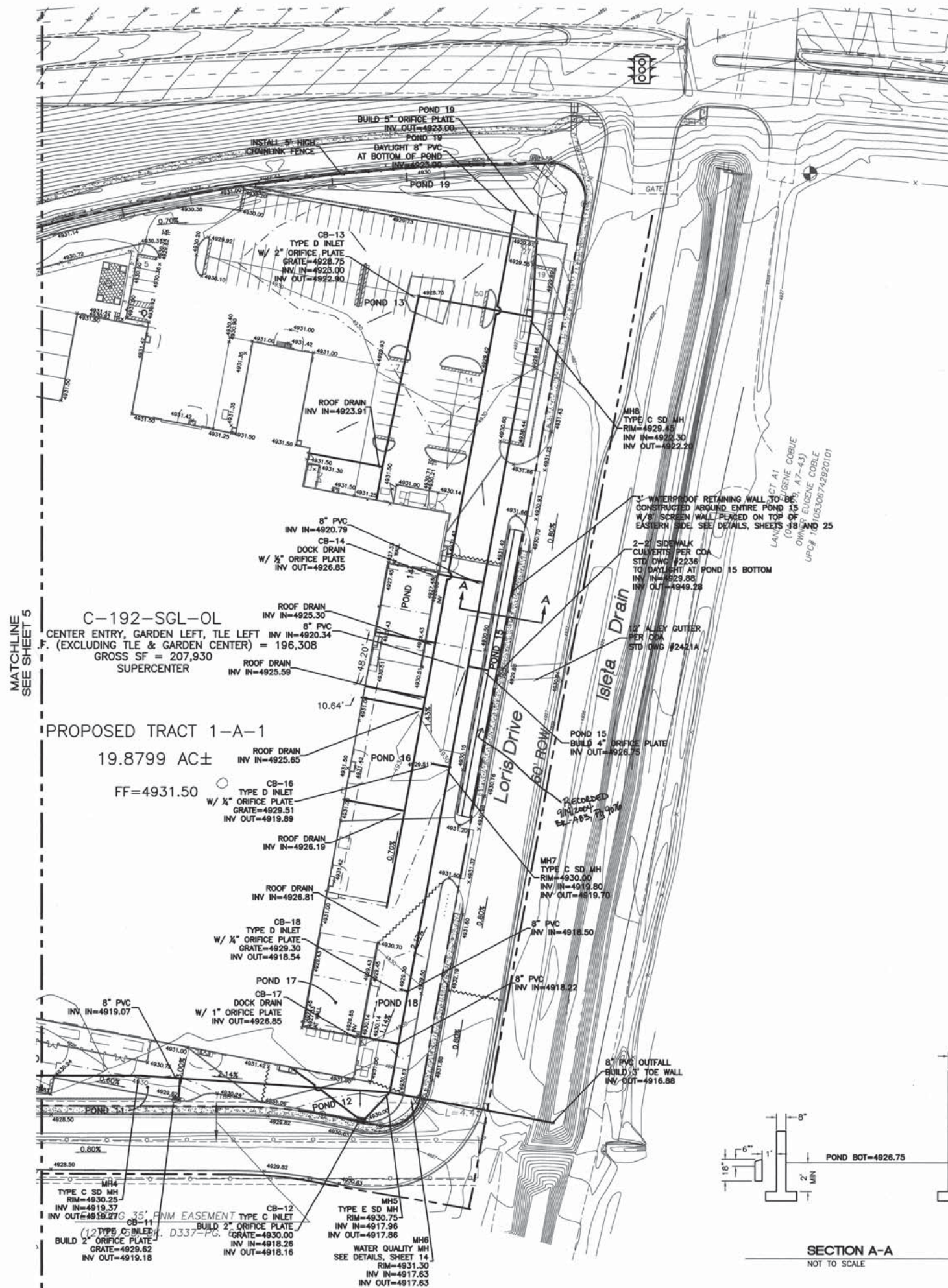
- PROPOSED STORM SEWER MANHOLE
- PROPOSED CURB INLET
- PROPOSED CATCH BASIN
- 24" RCP PROPOSED STORM SEWER LINE
- EXISTING CURB & GUTTER
- PROPOSED CURB & GUTTER
- BOUNDARY LINE
- EXISTING BOUNDARY LINE
- EASEMENT
- PROPOSED PERIMETER WALL
- PROPOSED RETAINING WALL
- EXISTING CONTOUR
- EXISTING INDEX CONTOUR
- PROPOSED CONTOUR
- PROPOSED INDEX CONTOUR
- GRADING HIGH POINT
- SLOPE TIE
- EXISTING SPOT ELEVATION
- PROPOSED SPOT ELEVATION
- POND LIMIT

FOR REFERENCE ONLY



NO.		DATE		REMARKS		BY	
REVISIONS							
ENGINEER'S SEAL		ALBUQUERQUE SOUTH WAL-MART #5430-00				DRAWN BY PMT	
		GRADING AND DRAINAGE PLAN - A				DATE 3-26-04	
		TIERRA WEST, LLC 8509 JEFFERSON NE ALBUQUERQUE, NEW MEXICO 87113 (505)858-3100				2294GR-06-10-04X	
RONALD R. BOHANNAN P.E. #7868						SHEET # 5 of 52	
						JOB # 220094	

736581



FOUNDATION SUBSURFACE PREPARATION WAL-MART
ALBUQUERQUE SOUTH STORE #5430-00, SE CORNER COORS AND RIO
BRAVO, ALBUQUERQUE, NEW MEXICO
5/11/04

UNLESS SPECIFICALLY INDICATED OTHERWISE IN THE DRAWINGS AND/OR
SPECIFICATIONS, THE LIMITS OF THIS SUBSURFACE PREPARATION ARE CONSIDERED TO
BE THAT PORTION OF THE SITE DIRECTLY BENEATH AND 10 FEET BEYOND THE BUILDING
AND APPURTENANCES.

APPURTENANCES ARE THOSE ITEMS ATTACHED TO THE BUILDING PROPER
(REFER TO DRAWING SHEET SPD), TYPICALLY INCLUDING, BUT NOT
LIMITED TO, THE BUILDING SIDEWALKS, GARDEN CENTER, PORCHES,
RAMPS, STOOPS, TRUCK WELLS/DOCKS, CONCRETE APRONS AT THE
AUTOMOTIVE CENTER, COMPACTOR PAD, ETC. THE SUBBASE AND THE
VAPOR BARRIER, WHERE REQUIRED, DO NOT EXTEND BEYOND THE
LIMITS OF THE ACTUAL BUILDING AND THE APPURTENANCES.

FOLLOWING THE SITE STRIPPING AND PRIOR TO FILL PLACEMENT, THE FILL AREAS
SHOULD BE OVEREXCAVATED TO A DEPTH OF 3 FEET BELOW THE EXISTING SITE GRADE.
THE AREA SHOULD THEN BE FILLED WITH ON-SITE SOILS MEETING THE CITY OF
ALBUQUERQUE REQUIREMENTS LISTED BELOW FOR ENGINEERED FILL. THE FILL
MATERIAL SHALL BE PLACED IN LOOSE LIFTS NOT EXCEEDING 8 INCHES IN THICKNESS
AND COMPACTED TO AT LEAST 95 PERCENT OF THE MODIFIED PROCTOR MAXIMUM DRY
DENSITY (ASTM D1557). ANY ADDITIONAL ENGINEERED FILL SHALL MEET THE
REQUIREMENTS OF THE CITY OF ALBUQUERQUE STANDARD SPECIFICATIONS FOR PUBLIC
WORKS CONSTRUCTION (COASS) SECTION 501. THE GENERAL ENGINEERED MATERIAL
FOR FILL SHOULD CONSIST OF SOILS THAT MEET THE FOLLOWING GRADATION
REQUIREMENTS.

Sieve Size (Square Openings)	Percent Passing by Weight
3 inch	100
No. 4	100
No. 200	5-45

THE LIQUID LIMIT AND PLASTICITY INDEX OF THE MATERIAL FOR ENGINEERED FILL
SHOULD NOT EXCEED 40 AND 12, RESPECTIVELY. IN GENERAL, NATIVE SITE SOILS THAT
ARE FREE OF ANY DELETERIOUS MATERIALS AND MEETING THE REQUIREMENTS ABOVE
MAY BE USED AS ENGINEERED FILL TO ACHIEVE PROJECT GRADES IN BOTH BUILDING
AND PAVEMENT AREAS.

ESTABLISH THE FINAL SUBGRADE ELEVATION AT 10-INCHES BELOW THE
FINISHED CONCRETE ELEVATION WHEN USING A 4-INCH SLAB TO ALLOW
FOR THE SLAB THICKNESS AND A 6-INCH SUBBASE, OR AT 11 1/2-INCHES
BELOW THE

STORM SEWER PIPE INFORMATION

LOCATION	PIPE SIZE	LF	SLOPE
CB-11 TO MAIN LINE	8" PVC	17.41	0.60%
CB-12 TO MH-5	8" PVC	33.68	0.60%
CB-3 TO MH-1	8" PVC	241.22	0.60%
MH-4 TO MH-5	8" PVC	217.82	0.60%
MH-5 TO MH-6	8" PVC	22.00	0.60%
MH-6 TO OUTFALL	8" PVC	124.13	0.60%
MH-7 TO MH-5	8" PVC	288.56	0.60%
MH-8 TO MH-7	8" PVC	399.19	0.60%
CB-13 TO MH-8	8" PVC	101.22	0.60%
CB-14 TO MAIN LINE	8" PVC	40.53	15.12%
CB-16 TO MAIN LINE	8" PVC	15.32	0.60%
CB-17 TO MAIN LINE	8" PVC	33.86	25.49%
CB-18 TO MAIN LINE	8" PVC	6.49	0.60%
POND 15 TO MAIN LINE	8" PVC	17.48	43.25%
ROOF DRAIN TO POND 19	8" PVC	307.04	0.60%
POND 19 TO MH-8	8" PVC	89.79	0.60%

DETENTION POND INFORMATION

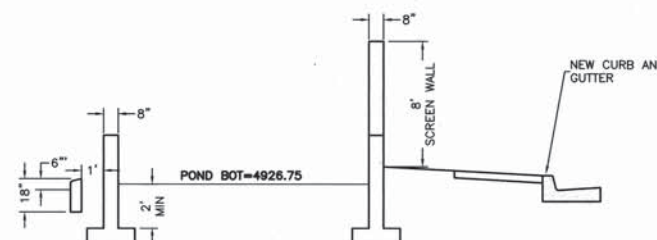
LOCATION	POND BOTTOM	MAX. W.S.E.	MAX. DEPTH
POND 1	4927.96	4928.62	0.66'
POND 2	4927.41	4928.40	0.99'
POND 3	4927.21	4928.15	0.94'
POND 4	4927.65	4928.57	0.92'
POND 5	4926.37	4927.33	0.96'
POND 6	4925.67	4926.65	0.98'
POND 7	4923.00	4925.95	2.95'
POND 8	4925.67	4926.59	0.92'
POND 9	4921.52	4924.20	2.68'
POND 10	4929.14	4929.75	0.61'
POND 11	4929.62	4930.24	0.62'
POND 12	4930.00	4930.62	0.62'
POND 13	4928.75	4929.73	0.98'
POND 14	4926.85	4927.75	0.90'
POND 15	4926.75	4929.75	3.00'
POND 16	4929.51	4930.23	0.72'
POND 17	4926.85	4927.90	1.05'
POND 18	4929.30	4930.03	0.73'
POND 19	4923.00	4929.98	6.98'

(MAX. W.S.E.=MAXIMUM WATER SURFACE ELEVATION)

FOR REFERENCE ONLY

CAUTION

EXISTING UTILITIES ARE NOT SHOWN.
IT SHALL BE THE SOLE RESPONSIBILITY
OF THE CONTRACTOR TO CONDUCT ALL
NECESSARY FIELD INVESTIGATIONS PRIOR
TO ANY EXCAVATION TO DETERMINE THE
ACTUAL LOCATION OF UTILITIES & OTHER
IMPROVEMENTS.



GRAPHIC SCALE



NO.		DATE		REMARKS		BY	
<div style="display: flex; justify-content: space-between;"> <div> <p>ENGINEER'S SEAL</p> <p>ALBUQUERQUE SOUTH WAL-MART #5430-00</p> <p>GRADING AND DRAINAGE PLAN - B</p> <p>TERRA WEST, LLC 8509 JEFFERSON NE ALBUQUERQUE, NEW MEXICO 87113 (505)858-3100</p> <p>RONALD R. BOHANNAN P.E. #7868</p> </div> <div> <p>DRAWN BY: PMT</p> <p>DATE: 3-26-04</p> <p>2294GRO-06-10-DAX</p> <p>SHEET #</p> <p>6 of 52</p> <p>JOB # 220094</p> </div> </div>							

736581