

- GENERAL NOTES**
- EDGES SHALL BE SHAPED WITH A 3/8" EDGING TOOL.
  - 3000 PSI CONCRETE OVER 95% COMPACTED SUBGRADE.

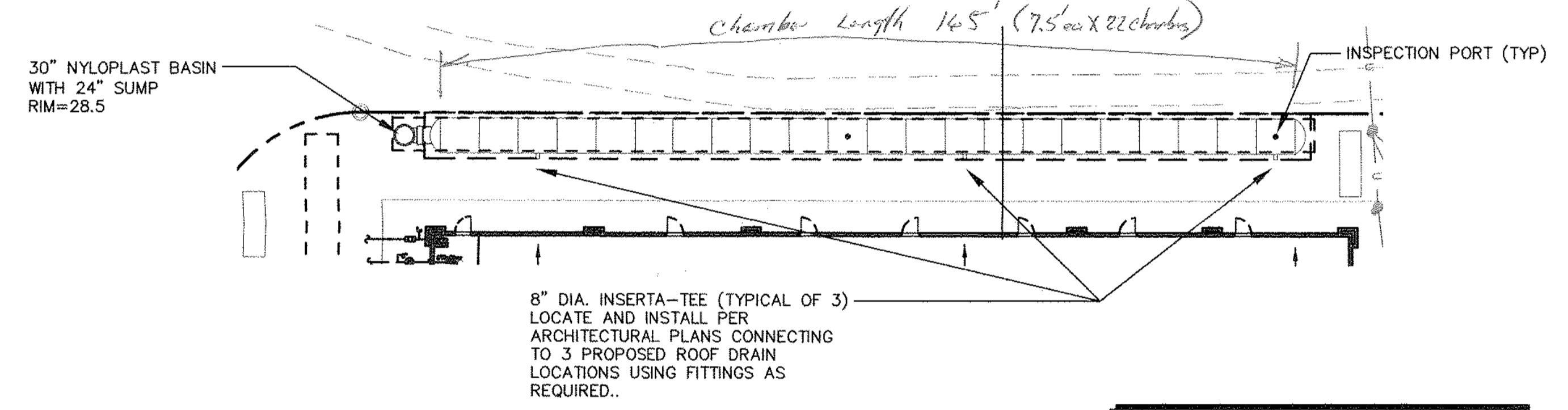
**4 CONCRETE HEADWALL AT EAST POND DRAIN PIPE**

SCALE: N.T.S.

PROPOSED LAYOUT: (22) STORMTECH MC-3500 CHAMBERS  
(2) STORMTECH MC-3500 END CAPS

INSTALLED WITH: 12" COVER STONE  
9" BASE STONE  
(40% STONE VOID)

INSTALLED SYSTEM VOLUME: 5,114 CF (PERIMETER STONE INCLUDED)

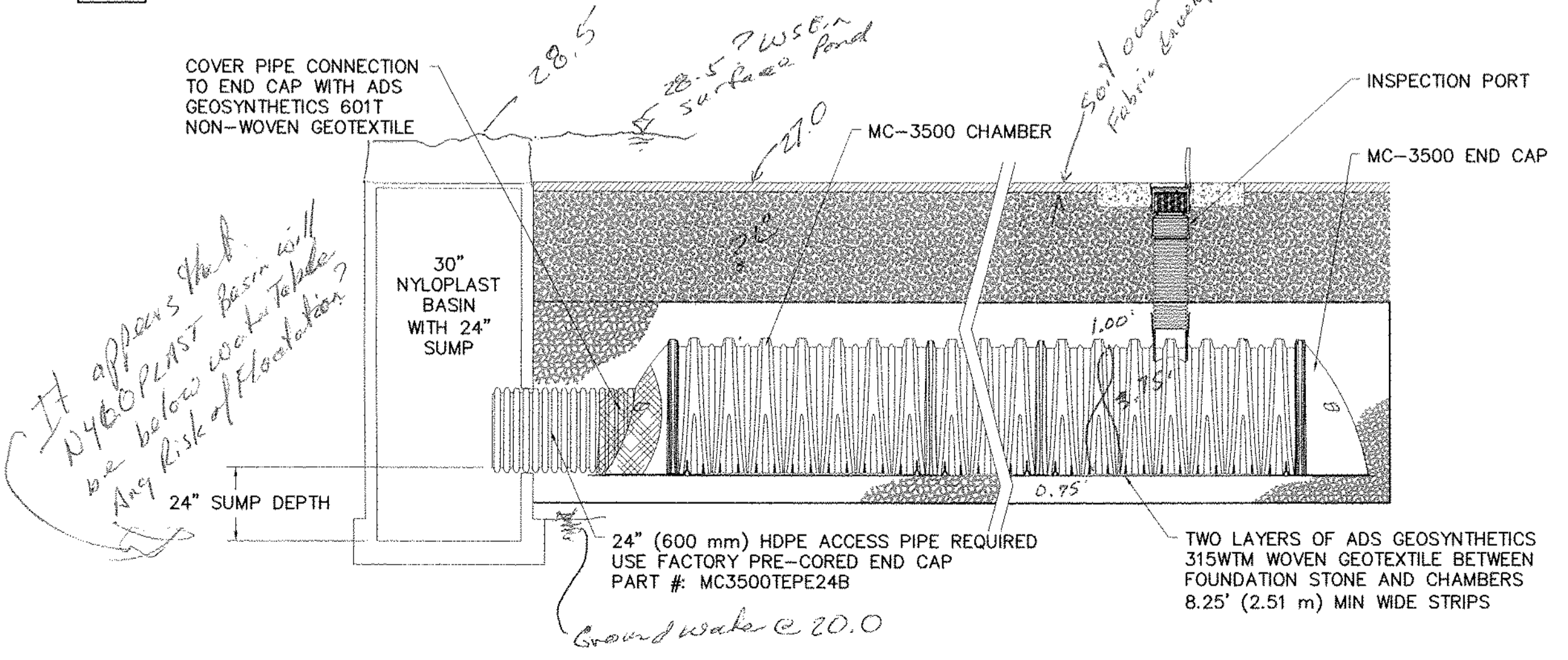


- NOTES**
- FINAL LAYOUT, SPECIFICATIONS AND DETAILS SHALL BE COORDINATED WITH ADS USING THE CHAMBER AND END CAP QUANTITIES AND STONE THICKNESSES SHOWN.
  - THE SITE DESIGN ENGINEER HAS REVIEWED ELEVATIONS TO ENSURE THE CHAMBER COVER REQUIREMENTS ARE MET.
  - THE SITE STRUCTURAL ENGINEER MUST REVIEW THE PROXIMITY OF THE CHAMBERS TO THE BUILDING/STRUCTURE. NO FOUNDATION LOADS SHALL BE TRANSMITTED TO THE CHAMBERS.
  - THE SITE STRUCTURAL AND GEOTECH ENGINEERS MUST REVIEW TO CONSIDER EFFECTS OF POSSIBLE SATURATED SOILS ON BEARING CAPACITY OF SOILS AND SEEPAGE.

FOR COMPLETE DESIGN AND PRODUCT SPECIFICATIONS AND DETAILS USING THE CHAMBER AND END CAP QUANTITIES AND STONE THICKNESSES SHOWN, GO TO NYLOPLAST-US.COM OR CALL 800-821-6710.

**5 STORMTECH DESIGN CONCEPT**

SCALE: N.T.S.



**6 STORMTECH ROW DETAIL**

SCALE: N.T.S.

**2 STORMWATER CHAMBER SPECIFICATIONS**

NOTES PROVIDED BY ADVANCED DRAINAGE SYSTEMS

SCALE: N.T.S.

- INSPECT ISOLATOR ROW FOR SEDIMENT - IF SEDIMENT IS AT OR ABOVE 3" - CLEAN OUT ISOLATOR ROW AND VACUUM STRUCTURE SUMP AS REQUIRED
- INSPECT EVERY 6 MONTHS DURING THE FIRST YEAR OF OPERATION. ADJUST THE INSPECTION INTERVAL BASED ON PREVIOUS OBSERVATIONS OF SEDIMENT ACCUMULATION AND HIGH WATER ELEVATIONS.
- CONDUCT JETTING AND VACTORING ANNUALLY OR WHEN INSPECTION SHOWS THAT MAINTENANCE IS NECESSARY.
- GO TO NYLOPLAST-US.COM OR CALL 800-821-6710 FOR ADDITIONAL INFORMATION.

**3 STORMWATER CHAMBER MAINTENANCE**

NOTES PROVIDED BY ADVANCED DRAINAGE SYSTEMS

SCALE: N.T.S.

**1 SECTION A**

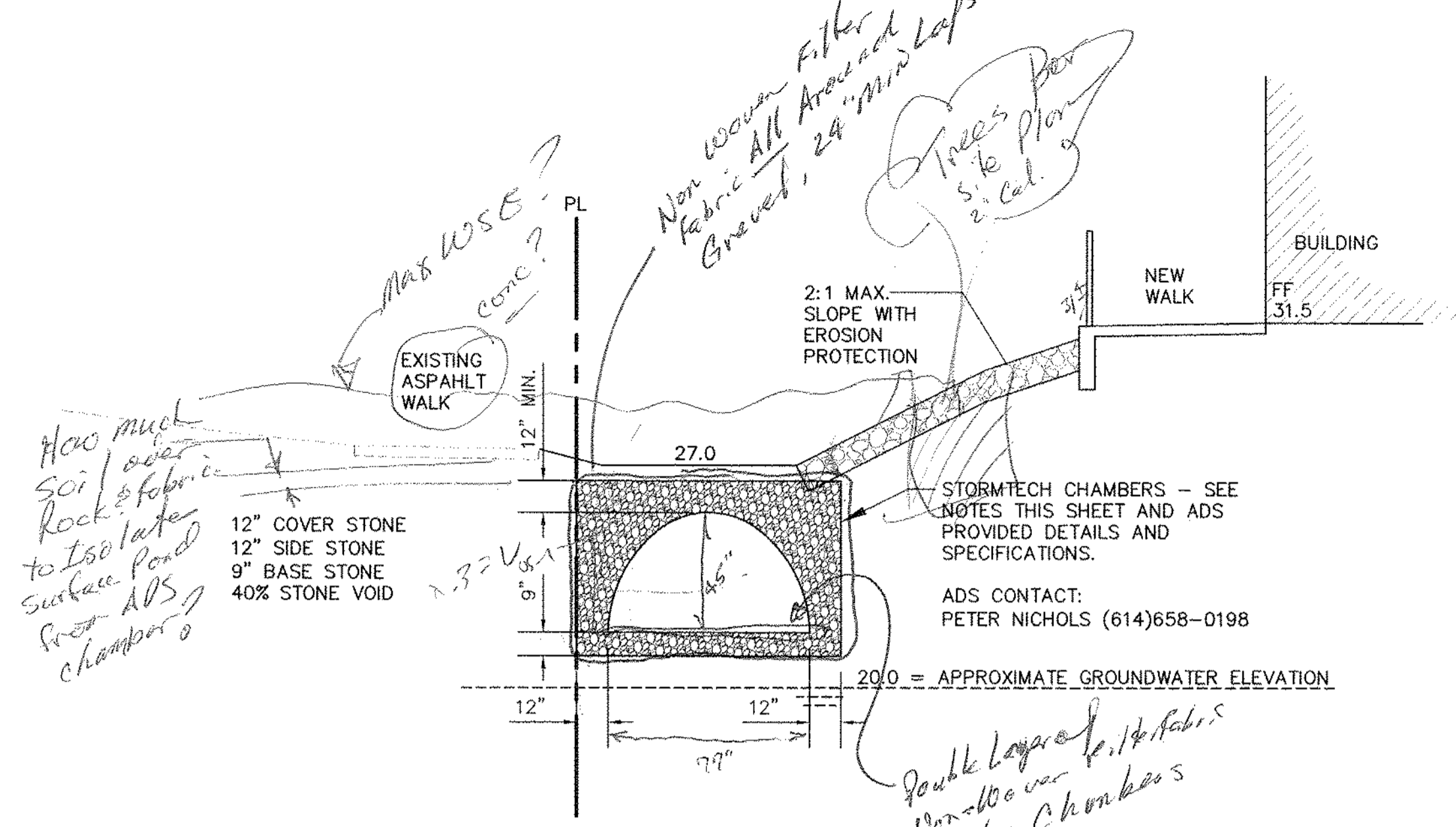
WEST SIDE: SEE CG-101 FOR LOCATION

SCALE: N.T.S.

- CHAMBERS SHALL BE STORMTECH MC-3500.
  - STORMTECH MC-3500 CHAMBERS SHALL NOT BE INSTALLED UNTIL THE MANUFACTURER'S REPRESENTATIVE HAS COMPLETED A PRE-CONSTRUCTION MEETING WITH THE INSTALLERS.
  - STORMTECH MC-3500 CHAMBERS SHALL BE INSTALLED IN ACCORDANCE WITH THE "STORMTECH MC-3500/MC-4500 CONSTRUCTION GUIDE".
  - CHAMBERS ARE NOT TO BE BACKFILLED WITH A DOZER OR AN EXCAVATOR SITUATED OVER THE CHAMBERS.  
STORMTECH RECOMMENDS 3 BACKFILL METHODS:
    - STONESHOOTER LOCATED OFF THE CHAMBER BED.
    - BACKFILL AS ROWS ARE BUILT USING AN EXCAVATOR ON THE FOUNDATION STONE OR SUBGRADE.
    - BACKFILL FROM OUTSIDE THE EXCAVATION USING A LONG BOOM HOE OR EXCAVATOR.
  - THE FOUNDATION STONE SHALL BE LEVELED AND COMPACTED PRIOR TO PLACING CHAMBERS.
  - JOINTS BETWEEN CHAMBERS SHALL BE PROPERLY SEATED PRIOR TO PLACING STONE.
  - END CAPS SHALL BE FASTENED TO CHAMBERS WITH (3) 2-1/2" COARSE THREAD SCREWS.
  - INLET AND OUTLET MANIFOLDS MUST BE INSERTED A MINIMUM OF 12" (300 mm) INTO CHAMBER END CAPS.
  - EMBEDMENT STONE SURROUNDING CHAMBERS MUST BE A CLEAN, CRUSHED, ANGULAR STONE 3/4-2" (20-50 mm) MEETING THE AASHTO M43 DESIGNATION OF #3 OR #4.
  - STONE MUST BE PLACED ON THE TOP CENTER OF THE CHAMBER TO ANCHOR THE CHAMBERS IN PLACE AND PRESERVE ROW SPACING.
  - PROTECT THE SUBSURFACE STORMWATER MANAGEMENT SYSTEM FROM CONSTRUCTION SITE RUNOFF.
- NOTES FOR CONSTRUCTION EQUIPMENT**
- THE USE OF EQUIPMENT OVER MC-3500 CHAMBERS IS LIMITED:
    - NO EQUIPMENT IS ALLOWED ON BARE CHAMBERS.
    - NO RUBBER Tired LOADER, DUMP TRUCK, OR EXCAVATORS ARE ALLOWED UNTIL PROPER FILL DEPTHS ARE REACHED IN ACCORDANCE WITH THE "STORMTECH MC-3500/MC-4500 CONSTRUCTION GUIDE".
    - WEIGHT LIMITS FOR CONSTRUCTION EQUIPMENT CAN BE FOUND IN THE "STORMTECH MC-3500/MC-4500 CONSTRUCTION GUIDE".

USE OF A DOZER TO PUSH EMBEDMENT STONE BETWEEN THE ROWS OF CHAMBERS MAY CAUSE DAMAGE TO CHAMBERS AND IS NOT AN ACCEPTABLE BACKFILL METHOD. ANY CHAMBERS DAMAGED BY USING THE "DUMP AND PUSH" METHOD ARE NOT COVERED UNDER THE STORMTECH STANDARD WARRANTY.

CONTACT STORMTECH AT 1-888-892-2694 WITH ANY QUESTIONS ON INSTALLATION REQUIREMENTS OR WEIGHT LIMITS FOR CONSTRUCTION EQUIPMENT.

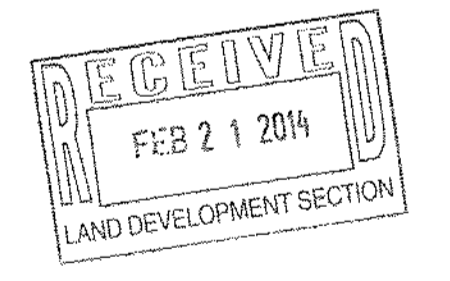


**GENERAL NOTES**

- COORDINATE WORK WITH SITE PLAN, UTILITY PLAN, DEMOLITION PLAN AND LANDSCAPE PLAN.
- IT IS THE CONTRACTOR'S RESPONSIBILITY TO FIELD VERIFY EXISTING CONDITIONS PRIOR TO CONSTRUCTION. REPORT ALL DISCREPANCIES TO THE ARCHITECT AND VERIFY THE ARCHITECT'S INTENT BEFORE PROCEEDING.
- ALL TRASH, DEBRIS, & SURFACE VEGETATION SHALL BE CLEARED AND LEGALLY DISPOSED OF OFFSITE.
- ALL SUBGRADE, OVER-EXCAVATION, AND FILL SHALL BE PLACED AND / OR COMPACTED PER THE GEOTECHNICAL REPORT AND CITY OF ALBUQUERQUE SPECIFICATIONS.
- FINAL GRADES SHOWN REPRESENT TOP OF FINISH MATERIAL (I.E. TOP OF CONCRETE, TOP OF CONCRETE BUILDING PAD, TOP OF PAVEMENT MATERIAL, TOP OF LANDSCAPING MATERIAL, ETC.). CONTRACTOR SHALL GRADE, COMPACT SUBGRADE AND DETERMINE EARTHWORK ESTIMATES BASED ON ELEVATIONS SHOWN MINUS FINISH MATERIAL THICKNESSES.
- EXISTING UTILITY LINES ARE SHOWN IN AN APPROXIMATE MANNER ONLY AND MAY BE INCOMPLETE OR OBSOLETE. SUCH LINES MAY OR MAY NOT EXIST WHERE SHOWN OR NOT SHOWN. CONTRACTOR SHALL CONTACT NM-811 FOR UTILITY LINE SPOTS TWO WORKING DAYS PRIOR TO CONDUCTING SITE FIELD WORK. CONTRACTOR SHALL FIELD VERIFY AND LOCATE ALL UTILITIES PRIOR TO COMMENCEMENT OF ANY CONSTRUCTION. CONTRACTOR IS FULLY RESPONSIBLE FOR ANY AND ALL DAMAGE CAUSED BY ITS FAILURE TO LOCATE, IDENTIFY AND PRESERVE ANY AND ALL EXISTING UTILITIES, PIPELINES, AND UNDERGROUND UTILITY LINES.
- THE ENVIRONMENTAL PROTECTION AGENCY (EPA) AND THE CITY OF ALBUQUERQUE REQUIRE A STORM WATER POLLUTION PREVENTION PLAN (SWPPP), AN NPDES PERMIT, AND AN EROSION AND SEDIMENT CONTROL (ESC) PERMIT FOR PROJECTS WHERE CONSTRUCTION ACTIVITIES MEET THE EPA THRESHOLD. (SWPPP, NPDES PERMIT, AND ESC PLAN BY OTHERS.) A CITY-APPROVED ESC PERMIT MUST BE INCLUDED WITH THE CONTRACTOR'S SUBMITTAL FOR A ROUGH GRADING, GRADING, PAVING, BUILDING, OR WORK ORDER PERMIT.
- ADJUST RIMS OF EXISTING UTILITY FEATURES AS NECESSARY TO MATCH NEW GRADES, TYPICAL.
- WHERE NEW GRADES ARE SHOWN AS 'MATCH' OR '±', TRANSITIONS BETWEEN NEW AND EXISTING SHALL BE SMOOTH AND LEVEL.
- ALL EROSION PROTECTION TO BE FRACTURED FACE ROCK (F.F. ROCK) 6" AVG. DIA. ANGULAR FACED ROCK PLACED OVER GEOTEX 501 NON-WOVEN GEOTEXTILE (O.E.).
- SIDESLOPES STEEPER THAN 4:1 MUST HAVE PERMANENT EROSION PROTECTION INSTALLED, TYPICAL.

POND DESIGN PARAMETERS (TOP OF POND, BOTTOM OF POND, SIZE OF ORIFICE, AREA OF POND, ETC.) TO BE STRICTLY ADHERED TO FOR CERTIFICATION PURPOSES. SEE DETAIL SHEET FOR ADDITIONAL INFORMATION.

ENGINEER RECOMMENDS THAT OWNER MAINTAIN EROSION PROTECTION ELEMENTS. ENGINEER RECOMMENDS THAT OWNER INSPECT SITE YEARLY AND AFTER EACH RAINFALL TO IDENTIFY NEW AREAS OF EROSION AND INSTALL ADDITIONAL EROSION PROTECTION AS NEEDED BASED ON ACTUAL OCCURRENCES.



**FRED C. ARFMAN**  
NEW MEXICO  
7322  
Professional Engineer  
2-21-14

**ISAACSON & ARFMAN, P.A.**  
Consulting Engineering Associates  
128 Monroe Street N.E.  
Albuquerque, New Mexico 87106  
Ph: 505-268-8828 www.isaif.com

2021 CG-101.dwg Feb 20, 2014

This design, calculations, and concepts are owned by and remain the property of Isaacson & Arfman, P.A. and no part thereof shall be utilized by any person, firm or corporation for any purpose whatsoever except with the written permission of Isaacson & Arfman, P.A. ©

**LAMONICA SHOPS**  
N.W.C OF COORS AND LAMONICA S.W

**GRADING AND DRAINAGE DETAILS**

Date:	02-07-14	No.:	Revision:	Date:		Job No.:	2021
Drawn By:							CG-501
Ckd By:	FCA						SH. OF

P10-0005