

PRELIMINARY DRAINAGE REPORT

University Boulevard
Extension Project

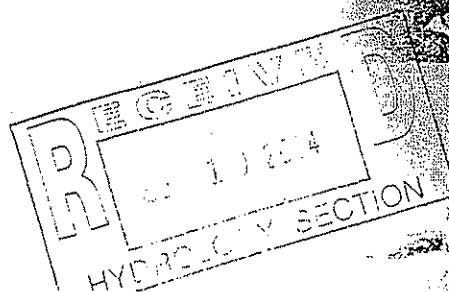
August 23, 2002

Prepared for:

Bernalillo County
Public Works Department
2400 Broadway SE
Albuquerque, NM 87102

Bohannon & Huston Inc.

• ENGINEERING
• ADVANCED TECHNOLOGIES
• SPATIAL DATA



Source: Preliminary Drainage Report University Blvd. Extension
(Bohannon Huston, 2002)

the Arroyo. The storm drain trunk line north of Sta. 98+00 to the intersection of the Extension and the Rio Bravo / University Blvd roadway, will discharge to a detention pond southwest of the intersection. A more detailed discussion of the roadway drainage is included in Section IX.A. Additional details of the detention pond is described below.

B. University Blvd. and University Blvd. / Rio Bravo Intersection

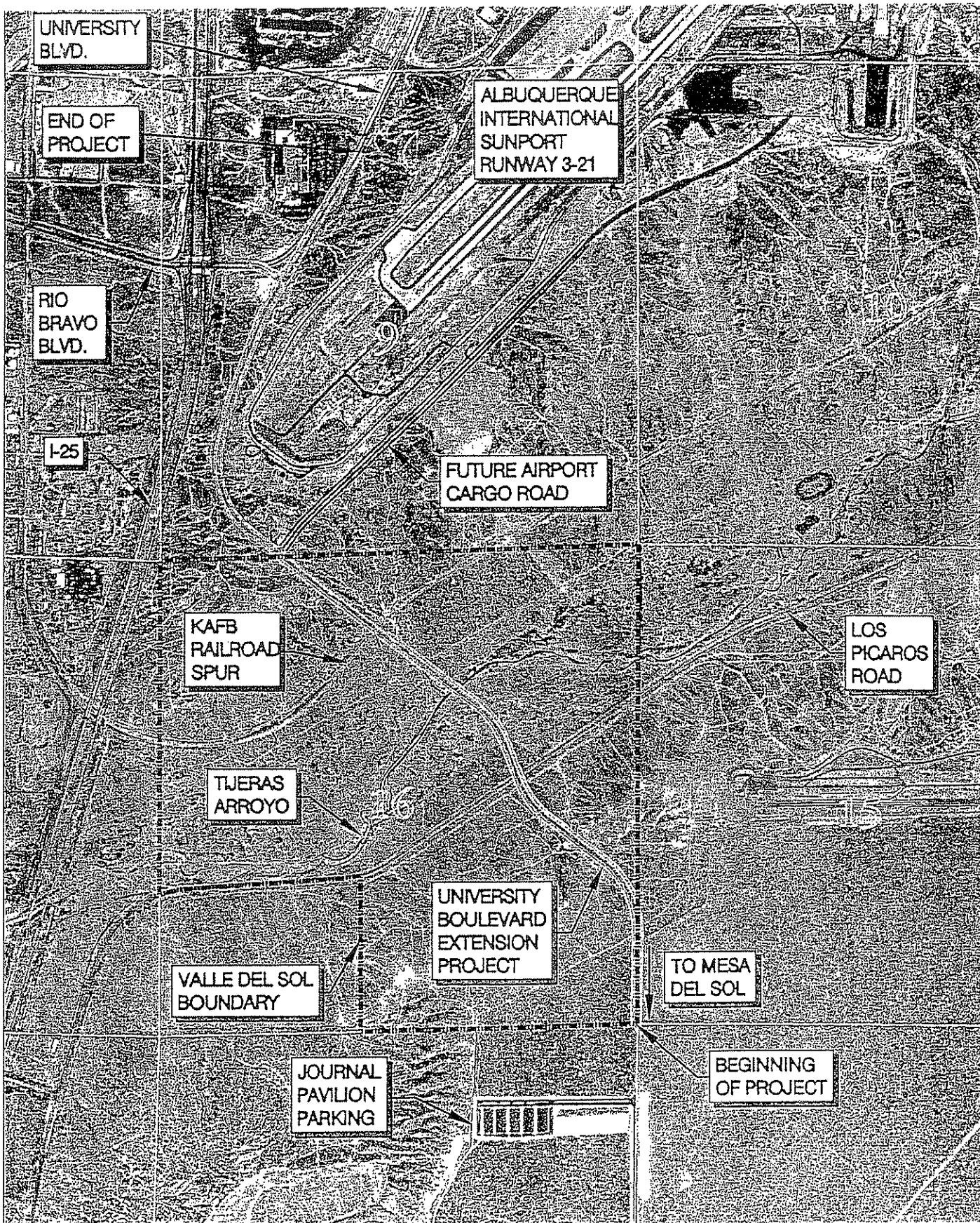
As described above, there are 3 different alignments for the layout of the intersection. Although each specific alignment would require different drainage facilities, the overall drainage approach would be similar for each intersection layout. Exhibit 6 shows the layout for Option 3. The text in this section will discuss the drainage concept for the interchange for Option 3.

A pond will be constructed southwest of the intersection to detain flows within the Extension corridor ROW north of Sta. 98+00. Due to the problems associated with the current drainage along University Blvd. north of the intersection, roadway flows within this area will be diverted to the detention pond as well. If possible, off-site flows east of University Blvd. and the proposed Extension and north of Sta. 107+00 will also be diverted to the pond. This will include flows from the AIA that currently discharge to these basins as shown on the Exhibits. These modifications should alleviate some of the existing problems along University Blvd. as discussed above. Off-site flows south of Sta. 107+00 are discussed in the next section.

Roadway flows west of the intersection will continue to be collected and conveyed as described for the existing conditions in Section IV. C. above. The outfall for flows outside of the paved surface, north of the roadway (west of the intersection) will be the existing Str. Ex.- 4 shown on Exhibit 6. Flows south of the roadway, will be conveyed via the existing Str. Ex.- 5 shown on Exhibit 6.

The location of the proposed detention pond is currently higher in elevation than the proposed roadway. Therefore, the pond will require excavation to a depth that will allow the appropriate flows to enter the area. The exact pond location, and therefore, depth and size will vary depending on which intersection alternative is selected. It is envisioned that the pond will discharge at a very slow rate to Str. Ex.- 5.

Drainage of this area will be limited by the capacity of the existing structures crossing under I-25. The design of the drainage facilities, including the pond, will require a complete, detailed analysis once the final intersection alignment is determined.



Bohannon & Huston

Courtyard I 7500 Jefferson St. NE Albuquerque, NM 87109-4335

UNIVERSITY BOULEVARD EXTENSION PROJECT

VICINITY MAP
FIGURE 2

DRAWN BY: S.F.G.
CHECKED BY: S.A.

DATE: 08.19.02
PROJECT NO. 020218.002.03.CWH

5-

Q is about average for

Reza Afshar NM DOT

827-5329

Discharge developed
runoff to the Coltinity
N Division Channel
via storm drain

INDEX

OUTSIDE CITY LIMITS