

LEGEND

TEMPORARY EROSION AND SEDIMENT CONTROL PLAN

PB -PB -PB -PB

SF - SF - SF

MULCH SOCKS

FLOW DIRECTION

STAGING AREA

STABILIZED CONSTRUCTION ENTRANCE

TRASH RECEPTACLE

CHEMICAL TOILET

CONCRETE WASHOUT

GRAVEL MULCH SEEDING PER CITY SPEC

RIP RAP

CHECK DAM

DROP INLET PROTECTION

OUTFALL

POSTING SIGN

PRESERVED VEGETATION

PROJECT PERIMETER & DISTURBED AREA

SILT FENCE

MULCH SOCKS

FLOW DIRECTION

STAGING AREA

STABILIZED CONSTRUCTION ENTRANCE

TRASH RECEPTACLE

CHEMICAL TOILET

CONCRETE WASHOUT

GRAVEL MULCH SEEDING PER CITY SPEC

RIP RAP

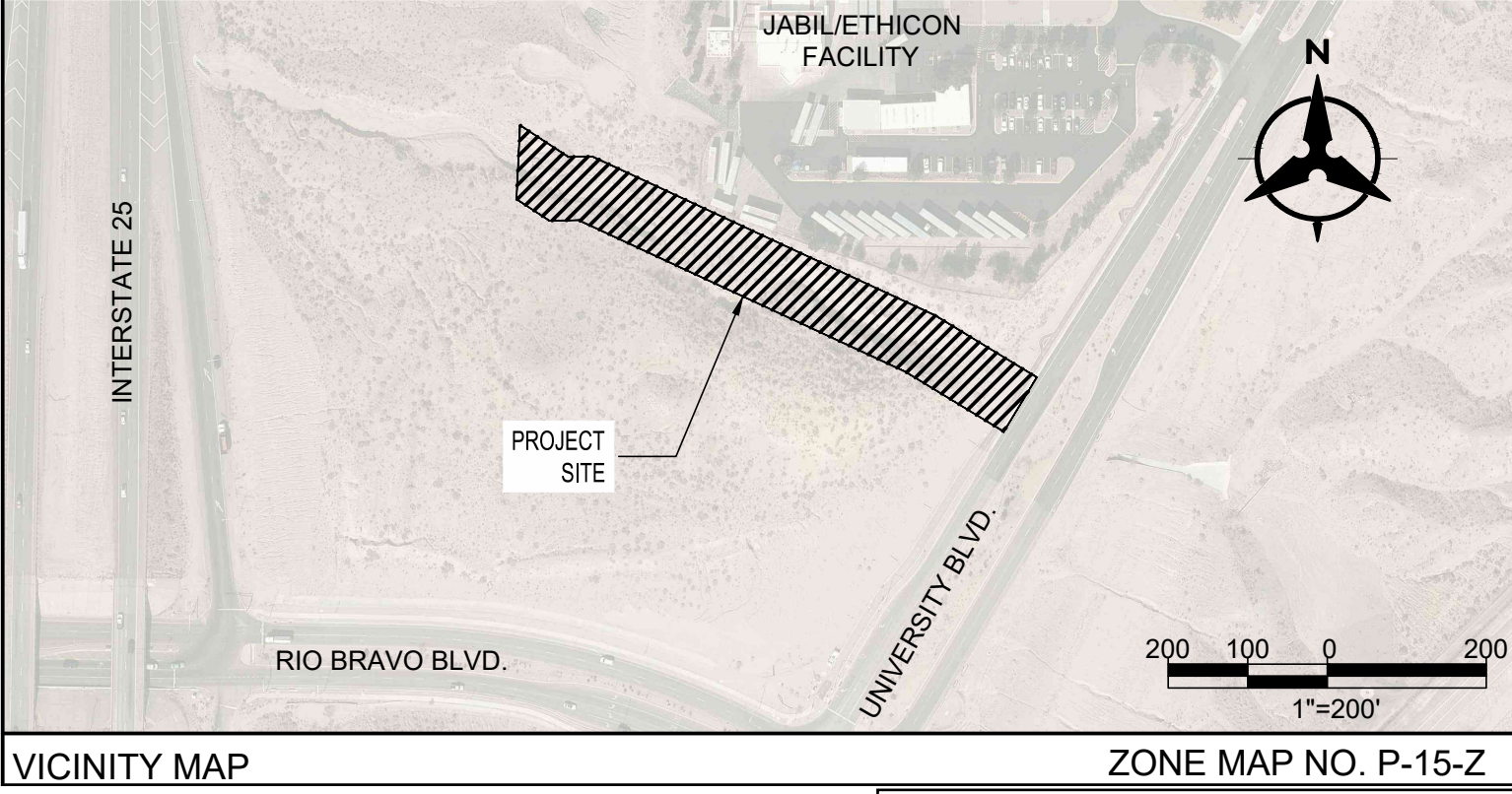
CHECK DAM

DROP INLET PROTECTION

OUTFALL

POSTING SIGN

PRESERVED VEGETATION




RECEIVING WATERS: UNASSESSED DRAINAGE CHANNEL

CRITICAL HABITAT: CRITERION "A"; NO CRITICAL HABITATS WITHIN PROJECT AREA

GPS LOCATION: 35.0245, -106.6345

CERTIFIED PROFESSIONAL



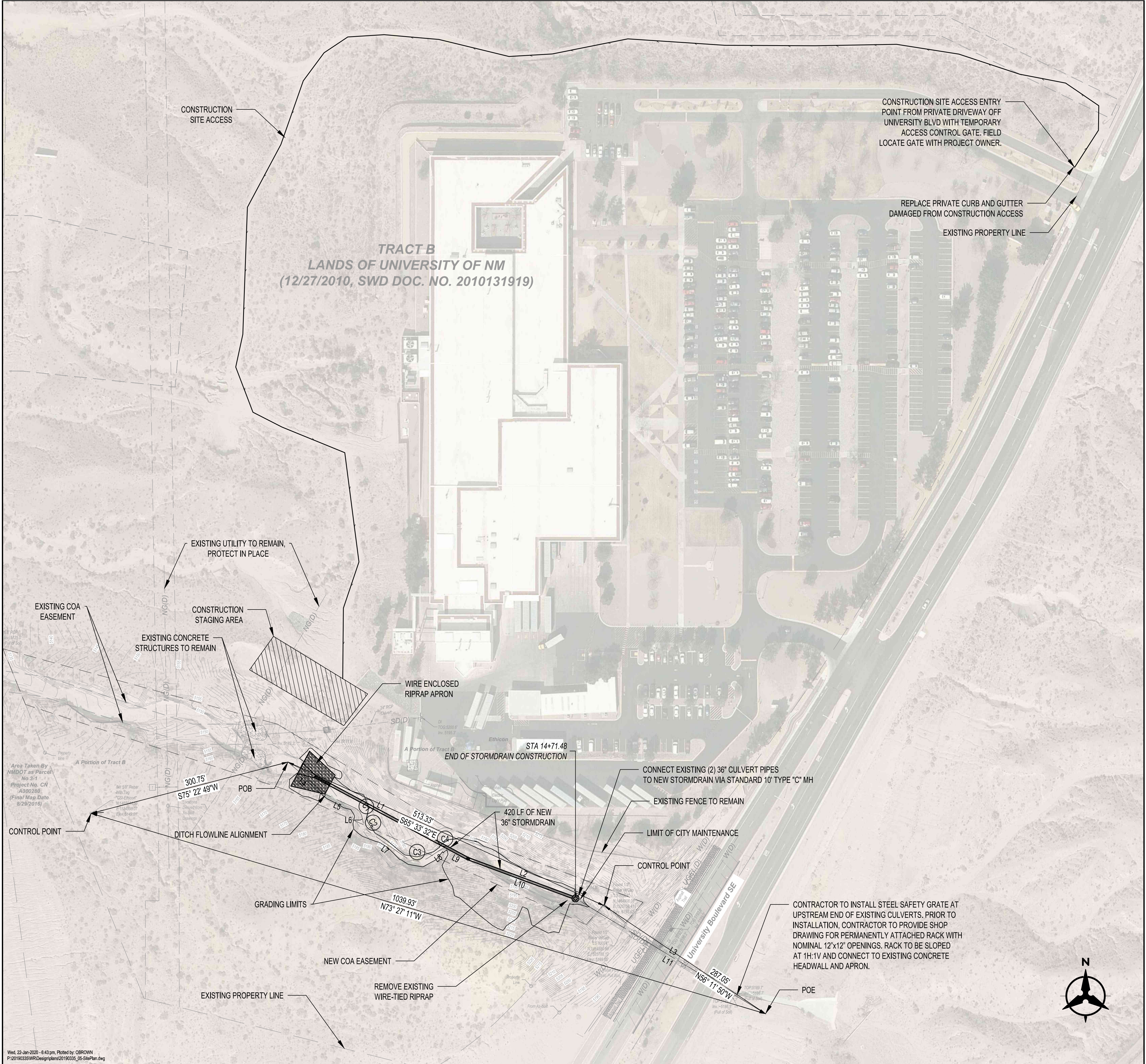
CASSANDRA DURKIN
No. 0212

W. EROSION AND SEDIMENT CONTROL

02/13/2020
CPESC Stamp

JABIL/ETHICON SOUTH ARROYO DRAINAGE IMPROVEMENTS	
PROJECT TITLE	
ALBUQUERQUE, BERNALILLO COUNTY, NM	
CITY, COUNTY, STATE	
02/13/2020	DATE
C. DURKIN	DRAWN BY





LEGEND

TEMPORARY EROSION AND SEDIMENT CONTROL PLAN

PB → PB → PB → PB PROJECT PERIMETER & DISTURBED AREA

SF → SF → SF SILT FENCE

MULCH SOCKS

FLOW DIRECTION

STAGING AREA

STABILIZED CONSTRUCTION ENTRANCE

TRASH RECEPTACLE

CHEMICAL TOILET

CONCRETE WASHOUT

GRAVEL MULCH

RIP RAP

CHECK DAM

DROP INLET PROTECTION

OUTFALL

POSTING SIGN

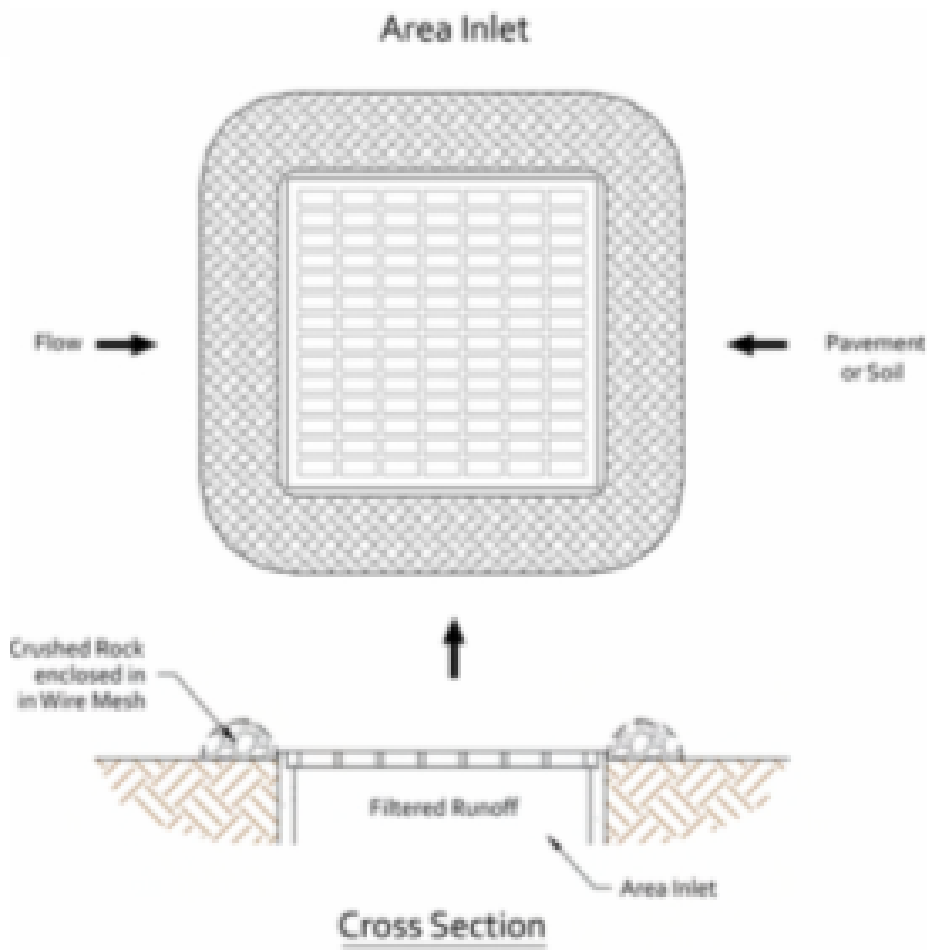
PRESERVED VEGETATION

RECEIVING WATERS: UNASSESSED DRAINAGE CHANNEL	
CRITICAL HABITAT: CRITERION "A"; NO CRITICAL HABITATS WITHIN PROJECT AREA	
GPS LOCATION: 35.0245, -106.6345	
JABIL/ETHICON SOUTH ARROYO DRAINAGE IMPROVEMENTS	
PROJECT TITLE	
ALBUQUERQUE, BERNALILLO COUNTY, NM	
CITY, COUNTY, STATE	
02/13/2020	DATE
C. DURKIN	DRAWN BY
INSPECTIONS PLUS	

CERTIFIED PROFESSIONAL
CPESC
CASSANDRA DURKIN
No. 0212
W EROSION AND SEDIMENT CONTROL

02/24/2020
CPESC Stamp

INLET PROTECTION



BMP Objectives

- Sediment Control
- Sheet Flow Runoff Control

SILT FENCE



BMP Objectives

- Sediment Control
- Sheet Flow Runoff Control
- Wind Erosion Control

SEDIMENT TRACK OUT CONTROL



BMP Objectives

- Sediment Control

MULCH SOCK/STRAW WATTLE



BMP Objectives

- Sediment Control
- Reduce Runoff Velocity
- Inlet Protection

BERMS AND SWALES



BMP Objectives

- Runoff Control
- Run-on Diversion

EROSION CONTOL NOTES

1. All perimeter erosion and sediment control measures shall be installed prior to the execution of any grading work and shall be maintained for the duration of the project. Failure to install and maintain erosion controls is a violation of the Federal Permit and is subject to fines.
2. All Erosion and Sediment Control (ESC) work on these plans, except as otherwise stated or provided hereon shall be permitted, constructed, inspected, and maintained in accordance with:
 - a. The City Ordinance § 14-5-2-11, the ESC Ordinance
 - b. The EPA's 2017 Construction General Permit (CGP), and
 - c. NMDOT's August 2012 BMP Manual, Appendix A
3. Sediment collected behind sediment filters and Silt Fences shall be removed when sediment reaches 1/3 the height of the barrier.
4. Routine Self-Inspections are required to review the project for compliance with the City Ordinance and the Construction General Permit according to the receiving water for the site. For sites that discharge to Sensitive Waters, inspection of erosion and sediment controls and other protective measures are required once every 7 and within 24 hours of Storm Events that produce 0.25 inches or more. All other sites must conduct Self-Inspections once every 14 days and within 24 hours of Storm Events that produce 0.25 inches or more. All inspections shall continue until the site construction has been completed and the site is determined stabilized by the City. Reports of these inspections shall be kept by the person or entity authorized to direct the construction activities on the site.
5. 4.BMPs shall be inspected and maintained until all disturbed areas are stabilized. Unless otherwise specified, Native Grass Seeding and mulch per COA STD 1012 is required for final stabilization prior to removal of BMPs and discontinuation of inspections.

6. The Contractor shall keep the site clean at all times and control dust resulting from earthwork operations. The Contractor shall not track mud or sediment from the site onto the public streets.

RECEIVING WATERS: UNASSESSED DRAINAGE CHANNEL	
CRITICAL HABITAT: CRITERION "A"; NO CRITICAL HABITATS WITHIN PROJECT AREA	
GPS LOCATION: 35.0245, -106.6345	
JABIL/ETHICON SOUTH ARROYO DRAINAGE IMPROVEMENTS	
PROJECT TITLE	
ALBUQUERQUE, BERNALILLO COUNTY, NM	
CITY, COUNTY, STATE	
02/13/2020	DATE
C. DURKIN	DRAWN BY

