

GRADING KEYED NOTES

1. INSTALL STORM DRAIN INLET TYPE 'D' INLET PER NM COA STD DWG 2206 OR APPROVED NYLOPLAST INLET WITH SAME CAPACITY.
2. INSTALL 4' WIDE CONCRETE VALLEY GUTTER PER DETAIL 4/C-300.
3. INSTALL 3' WIDE CURB OPENING PER DETAIL 3/C-300.
4. INSTALL TRENCH DRAIN PER DETAIL SHEET C-102 OR APPROVED EQUAL.
5. WATER HARVESTING AREA, SEE LANDSCAPE PLAN FOR DETAILS AND EROSION PROTECTION.
6. CONNECT TO EXISTING STORM DRAIN STUB OUT. CONTRACTOR SHALL VERIFY INVERT AND CONTACT ENGINEER OF ANY DISCREPANCIES.
7. INSTALL CONCRETE RUNDOWN PER DETAIL 2/C-300.
8. INSTALL HDPE (N-12 OR APPROVED EQUAL) STORM DRAIN, SEE PLAN FOR SIZE.
9. INSTALL 3' HIGH RETAINING WALL. SEE STRUCTURAL FOR DETAILS.
10. INSTALL PREMANUFACTURED FLARED END SECTION.
11. INSTALL PREMANUFACTURED DRAINAGE FITTING. SEE PLAN FOR SIZE.
12. INSTALL RIP RAP BLANKET PER DETAIL 1/C-300.
13. OUTFALL 4" COURTYARD STORM DRAINS INTO WATER HARVESTING AREA SEE PLAN FOR SLOPE AND INVERT.
14. INSTALL 12" SIDEWALK CULVERT PER COA STD DWG 2236

DRAINAGE CERTIFICATION

I, MICHAEL BALASKOVITS, NMPE 18187, OF THE FIRM BOHANNAN HUSTON INC., HEREBY CERTIFY THAT THIS PROJECT HAS BEEN GRADED AND WILL DRAIN IN SUBSTANTIAL COMPLIANCE WITH AND IN ACCORDANCE WITH THE DESIGN INTENT OF THE APPROVED PLAN DATED 12/8/10. THE RECORD INFORMATION EDITED ONTO THE ORIGINAL DESIGN DOCUMENT HAS BEEN OBTAINED BY ROBERT A. GROMATZKY, NMPS 18468, OF THE FIRM BOHANNAN HUSTON INC. I FURTHER CERTIFY THAT I HAVE PERSONALLY VISITED THE PROJECT SITE ON 12/19/11 AND HAVE DETERMINED BY VISUAL INSPECTION THAT THE SURVEY DATA PROVIDED IS REPRESENTATIVE OF ACTUAL SITE CONDITIONS AND IS TRUE AND CORRECT TO THE BEST OF MY KNOWLEDGE AND BELIEF. THIS CERTIFICATION IS SUBMITTED IN SUPPORT OF A REQUEST FOR A PERMANENT CERTIFICATE OF OCCUPANCY.

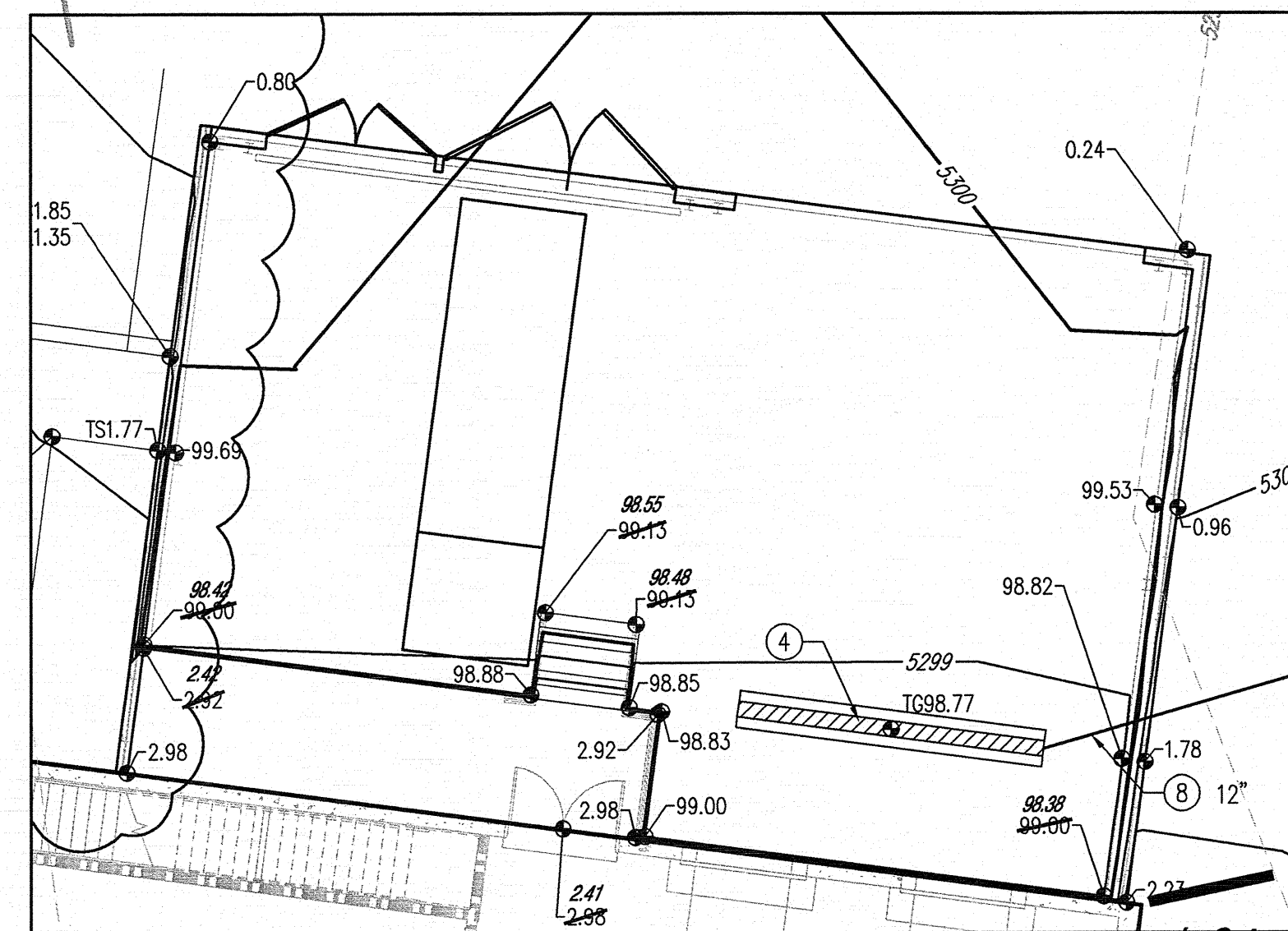
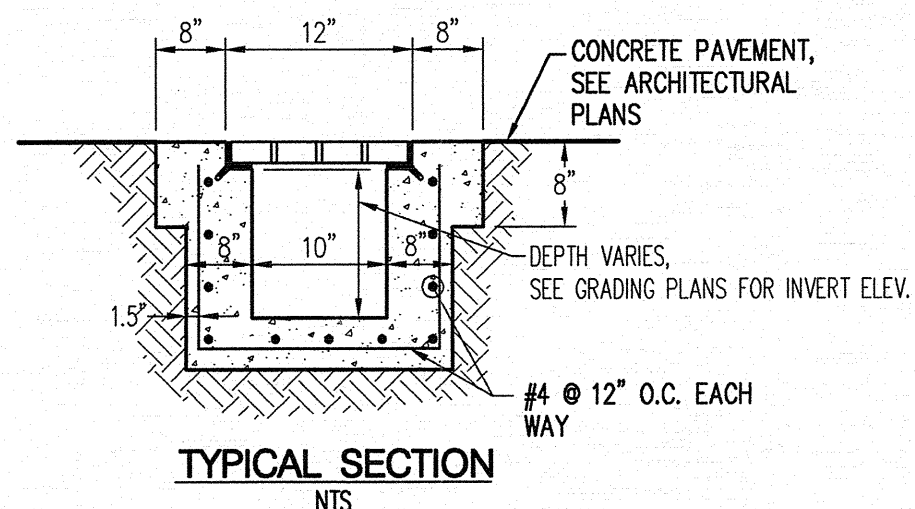
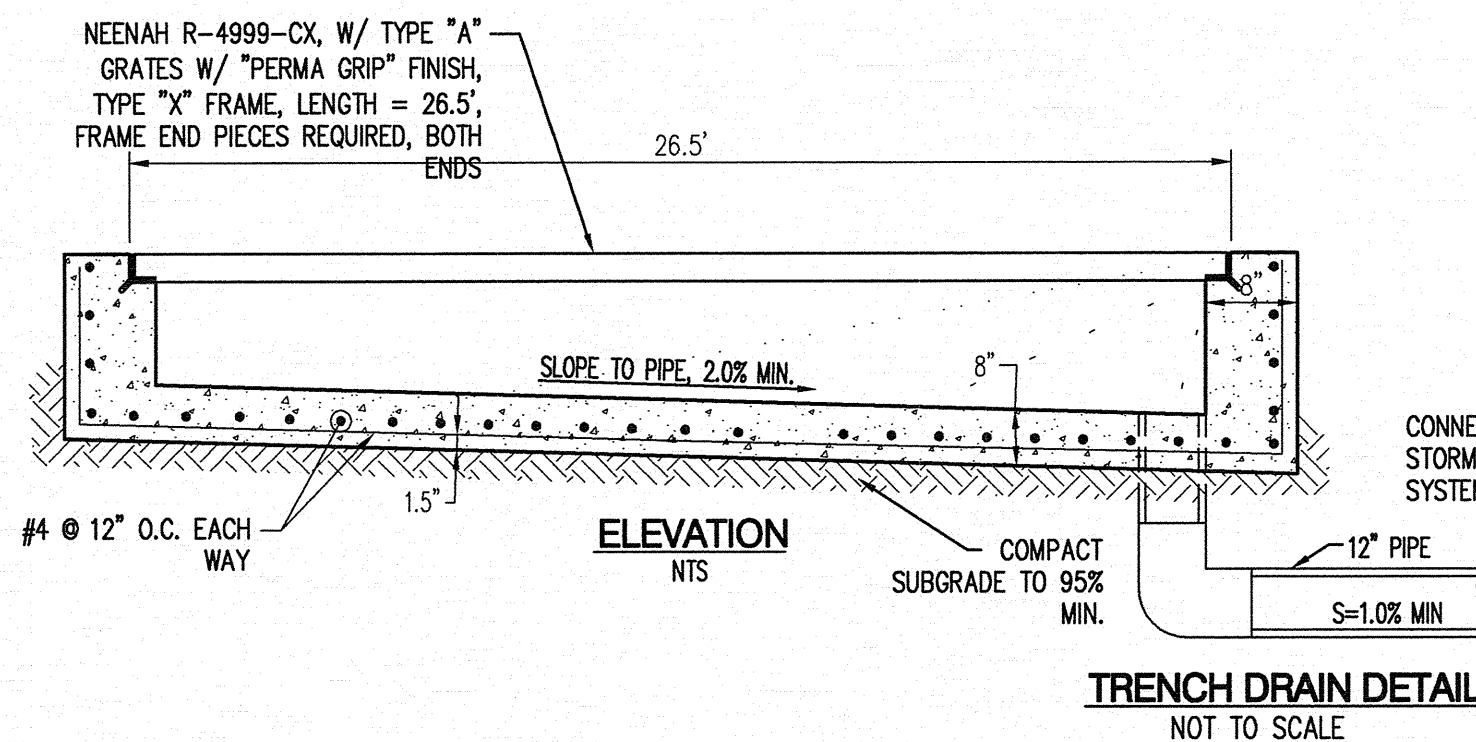
THE RECORD INFORMATION PRESENTED HEREON IS NOT NECESSARILY COMPLETE AND INTENDED ONLY TO VERIFY SUBSTANTIAL COMPLIANCE OF THE GRADING AND DRAINAGE ASPECTS OF THIS PROJECT. THOSE RELYING ON THIS RECORD DOCUMENT ARE ADVISED TO OBTAIN INDEPENDENT VERIFICATION OF ITS ACCURACY BEFORE USING IT FOR ANY OTHER PURPOSE.

[Signature]
MICHAEL BALASKOVITS, NMPE 18187

12/27/11

LEGEND

- FL70.22 DESIGN GRADE
- FL70.22 70.16 AS-BUILT GRADE



Artesia Development

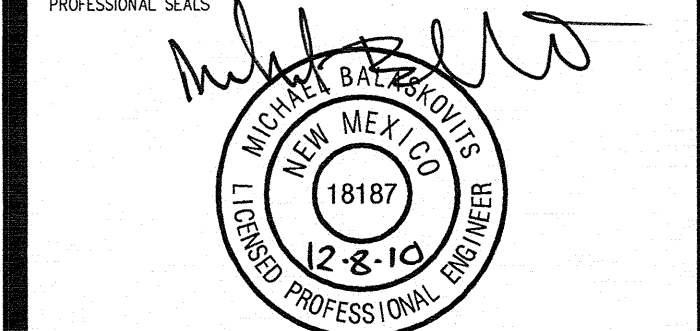
ICE Albuquerque

5441 WATSON DR
ALBUQUERQUE, NM

REVISION HISTORY

2	ISSUED FOR CONSTRUCTION	1/07/2010
1	ADDENDUM NO. 1	11/23/2010
0	GRADING AND DRAINAGE PACKAGE	10/18/2010

REVISION LEVEL	ISSUE NAME	ISSUE DATE
----------------	------------	------------

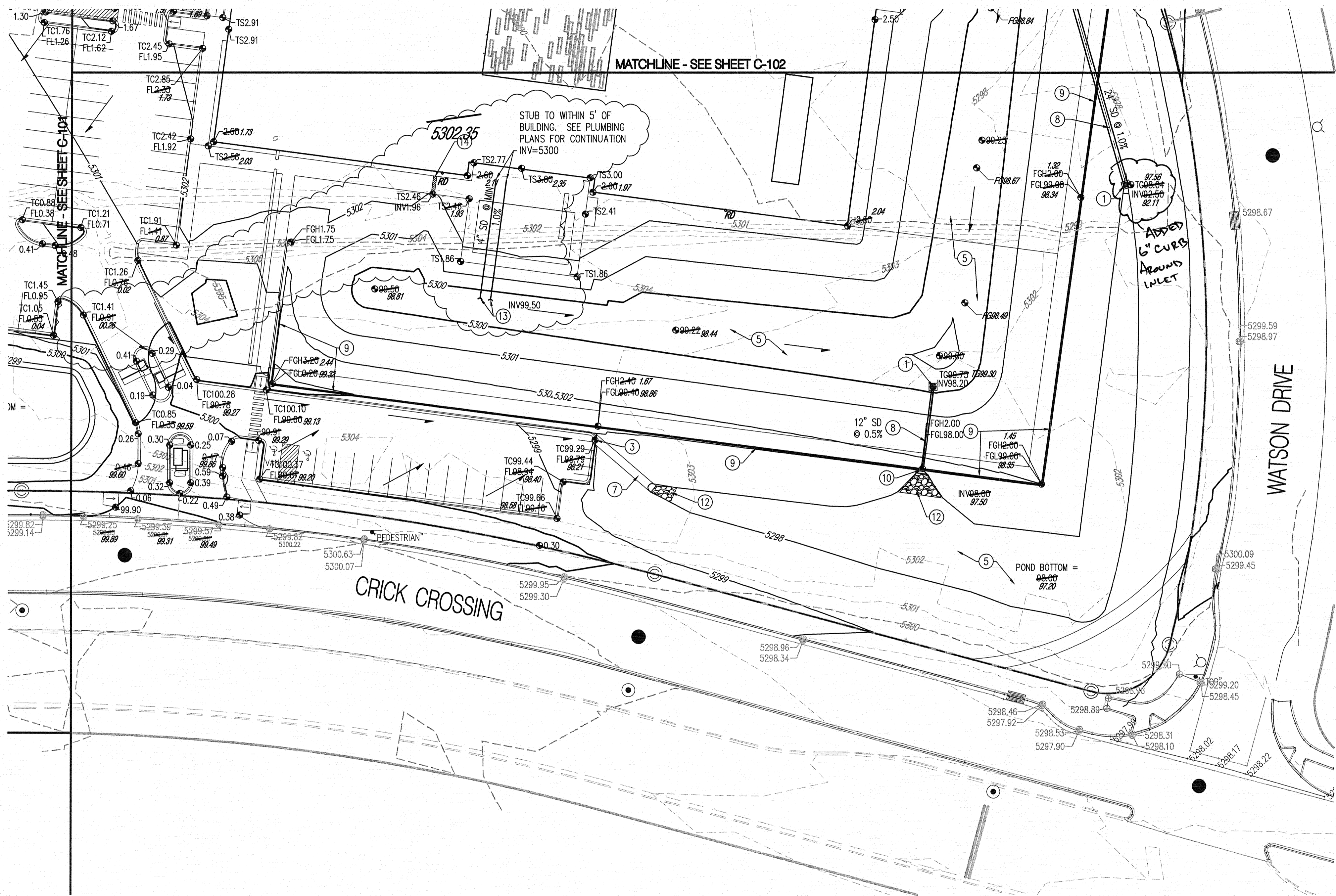


GRADING AND DRAINAGE PLAN

DRAWN BY	MJB	CHECKED BY	
PROJECT NUMBER	109036	PROJECT ABBREVIATION	ICEAlb
ORIGINAL ISSUE	12/07/2010	CURRENT DOCUMENTATION STAGE	CONSTRUCTION DOCS
FILE NAME			

C-102

DRAWING NUMBER



GRADING KEYED NOTES

1. INSTALL STORM DRAIN INLET TYPE 'D' INLET PER NM COA STD DWG 2206 OR APPROVED NYLOPLAST INLET WITH SAME CAPACITY.
2. INSTALL 4" WIDE CONCRETE VALLEY GUTTER PER DETAIL 4/C-300.
3. INSTALL 3" WIDE CURB OPENING PER DETAIL 3/C-300.
4. INSTALL TRENCH DRAIN PER DETAIL SHEET C-102 OR APPROVED EQUAL.
5. WATER HARVESTING AREA, SEE LANDSCAPE PLAN FOR DETAILS AND EROSION PROTECTION.
6. CONNECT TO EXISTING STORM DRAIN STUB OUT. CONTRACTOR SHALL VERIFY INVERT AND CONTACT ENGINEER OF ANY DISCREPANCIES.
7. INSTALL CONCRETE RUNDOWN PER DETAIL 2/C-300.
8. INSTALL HDPE (N-12 OR APPROVED EQUAL) STORM DRAIN, SEE PLAN FOR SIZE.
9. INSTALL 3" HIGH RETAINING WALL. SEE STRUCTURAL FOR DETAILS.
10. INSTALL PREMANUFACTURED FLARED END SECTION.
11. INSTALL PREMANUFACTURED DRAINAGE FITTING. SEE PLAN FOR SIZE.
12. INSTALL RIP RAP BLANKET PER DETAIL 1/C-300.
13. OUTFALL 4" COURTYARD STORM DRAINS INTO WATER HARVESTING AREA SEE PLAN FOR SLOPE AND INVERT.
14. INSTALL 12" SIDEWALK CULVERT PER COA STD DWG 2236

DRAINAGE CERTIFICATION

I, MICHAEL BALASKOVITS, NMPE 18187, OF THE FIRM BOHANNAN HUSTON INC., HEREBY CERTIFY THAT THIS PROJECT HAS BEEN GRADED AND WILL DRAIN IN SUBSTANTIAL COMPLIANCE WITH AND IN ACCORDANCE WITH THE DESIGN INTENT OF THE APPROVED PLAN DATED 12/8/10. THE RECORD INFORMATION EDITED ONTO THE ORIGINAL DESIGN DOCUMENT HAS BEEN OBTAINED BY ROBERT A. GROMATZKY, NMPS 16469, OF THE FIRM BOHANNAN HUSTON INC. I FURTHER CERTIFY THAT I HAVE PERSONALLY VISITED THE PROJECT SITE ON 12/19/11 AND HAVE DETERMINED BY VISUAL INSPECTION THAT THE SURVEY DATA PROVIDED IS REPRESENTATIVE OF ACTUAL SITE CONDITIONS AND IS TRUE AND CORRECT TO THE BEST OF MY KNOWLEDGE AND BELIEF. THIS CERTIFICATION IS SUBMITTED IN SUPPORT OF A REQUEST FOR A PERMANENT CERTIFICATE OF OCCUPANCY.

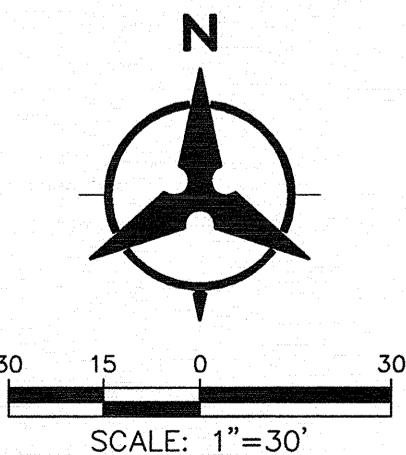
THE RECORD INFORMATION PRESENTED HEREON IS NOT NECESSARILY COMPLETE AND INTENDED ONLY TO VERIFY SUBSTANTIAL COMPLIANCE OF THE GRADING AND DRAINAGE ASPECTS OF THIS PROJECT. THOSE RELYING ON THIS RECORD DOCUMENT ARE ADVISED TO OBTAIN INDEPENDENT VERIFICATION OF ITS ACCURACY BEFORE USING IT FOR ANY OTHER PURPOSE.

Michael Balaskovits
MICHAEL BALASKOVITS, NMPE 18187

12/20/11

LEGEND

- FL70.22 DESIGN GRADE
- FL70.22 AS-BUILT GRADE



Artesia Development ICE Albuquerque 5441 WATSON DR ALBUQUERQUE, NM

REVISION HISTORY

2	ISSUED FOR CONSTRUCTION	1/07/2010
1	ADDENDUM NO. 1	11/23/2010
0	GRADING AND DRAINAGE PACKAGE	10/18/2010

REVISION	ISSUE NAME	ISSUE DATE
----------	------------	------------

PROFESSIONAL SEALS



GRADING AND DRAINAGE PLAN

DRAWN BY	MJB	CHECKED BY	
PROJECT NUMBER	109036	PROJECT ABBREVIATION	ICEAib
ORIGINAL ISSUE	12/07/2010	CURRENT DOCUMENTATION STAGE	CONSTRUCTION DOCS
FILE NAME			

C-103

DRAWING NUMBER