

CITY OF ALBUQUERQUE

Planning Department
Alan Varela, Director



Mayor Timothy M. Keller

May 8, 2025

Luis Noriega
Tierra West LLC
5571 Midway Park Place NE
Albuquerque, NM 87109

**RE: Kairos Power – KPSW Project SAGUARO
5201 Hawking Drive SE
Grading and Drainage Plans
Engineer's Stamp Date: 02/14/2025
Hydrology File: Q16DA5000A
Case # HYDR-2025-00143**

Dear Mr. Noriega:

PO Box 1293

Based upon the information provided in your submittal received 05/8/2025, the Conceptual Grading & Drainage Plan is approved for Rough Grading / Grading Permit.

Albuquerque

PRIOR TO BUILDING PERMIT:

NM 87103

Please submit a more detailed Grading & Drainage Plan to Hydrology for review and approval.

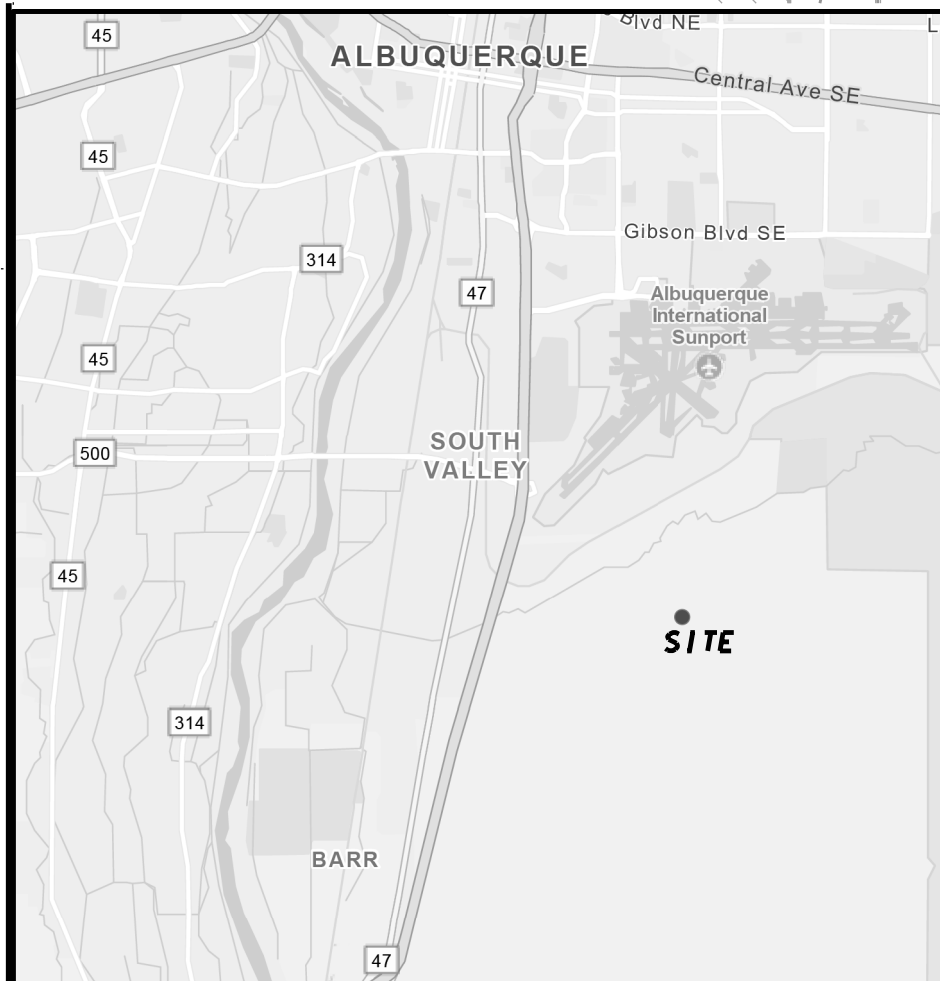
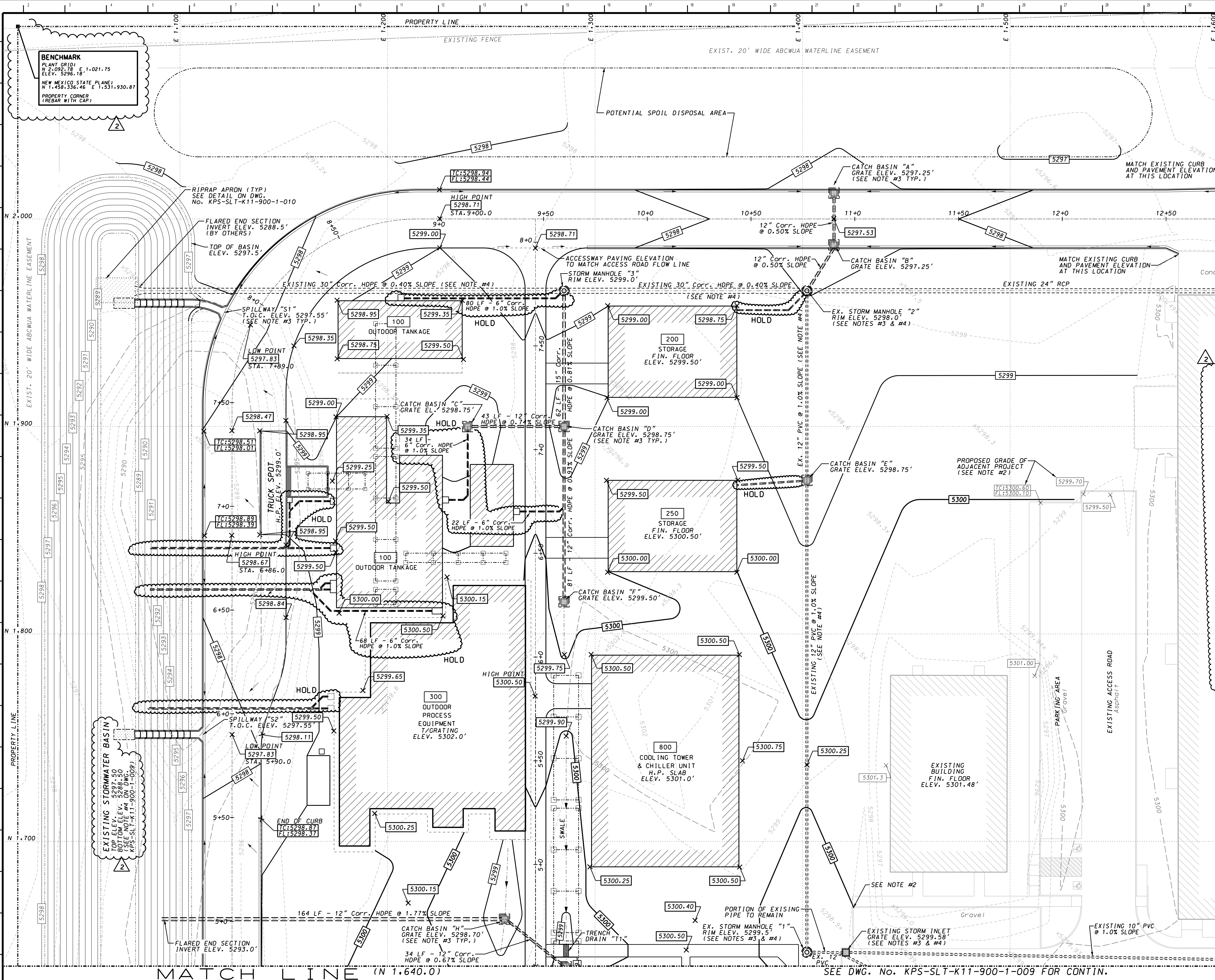
www.cabq.gov

As a reminder, if the project total area of disturbance (including the staging area and any work within the adjacent Right-of-Way) is 1 acre or more, then an Erosion and Sediment Control (ESC) Plan and Owner's certified Notice of Intent (NOI) is required to be submitted to the Stormwater Quality Engineer (Doug Hughes, PE, jhughes@cabq.gov, 505-924-3420) 14 days prior to any earth disturbance.

If you have any questions, please contact me at 505-924-3314 or amontoya@cabq.gov.

Sincerely,

Anthony Montoya, Jr., P.E., CFM
Senior Engineer, Hydrology
Planning Department, Development Review Services



LOCATION MAP: SCALE: 1"= 500'

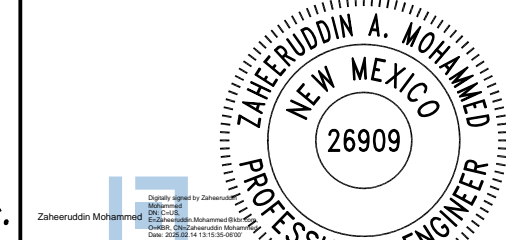
FOR NOTES REFER TO DWG.
KPS-SLT-K11-900-1-009

LEGAL DESCRIPTION

TR D-1 PLAT OF TRACTS D-1 THRU
D-7 MESA DEL SOL INNOVATIONPARK II
(A SUBDIVISION OF TRACT D MESA D
EL SOL INNOVATIONPARK II) CONT
16.4161 AC & TR D-3 PLAT OF TRACTS
D-1 THRU D-7 MESA DEL SOL
INNOVATION PARK II (A SUBDIVISION
OF TRACT D MESA DEL SOL
INNOVATION PARK II) CONT 12.0217 AC.

KBR ENGINEERING COMPANY
601 JEFFERSON STREET
HOUSTON, TX 77002
NM SCC NUMBER 1570407

ZAHEDRUDDIN A. MOHAMMEND
PROFESSIONAL ENGINEER - NEW MEXICO
LICENSE NO. 28009
EXPIRES 12/31/2025



REVISION HISTORY

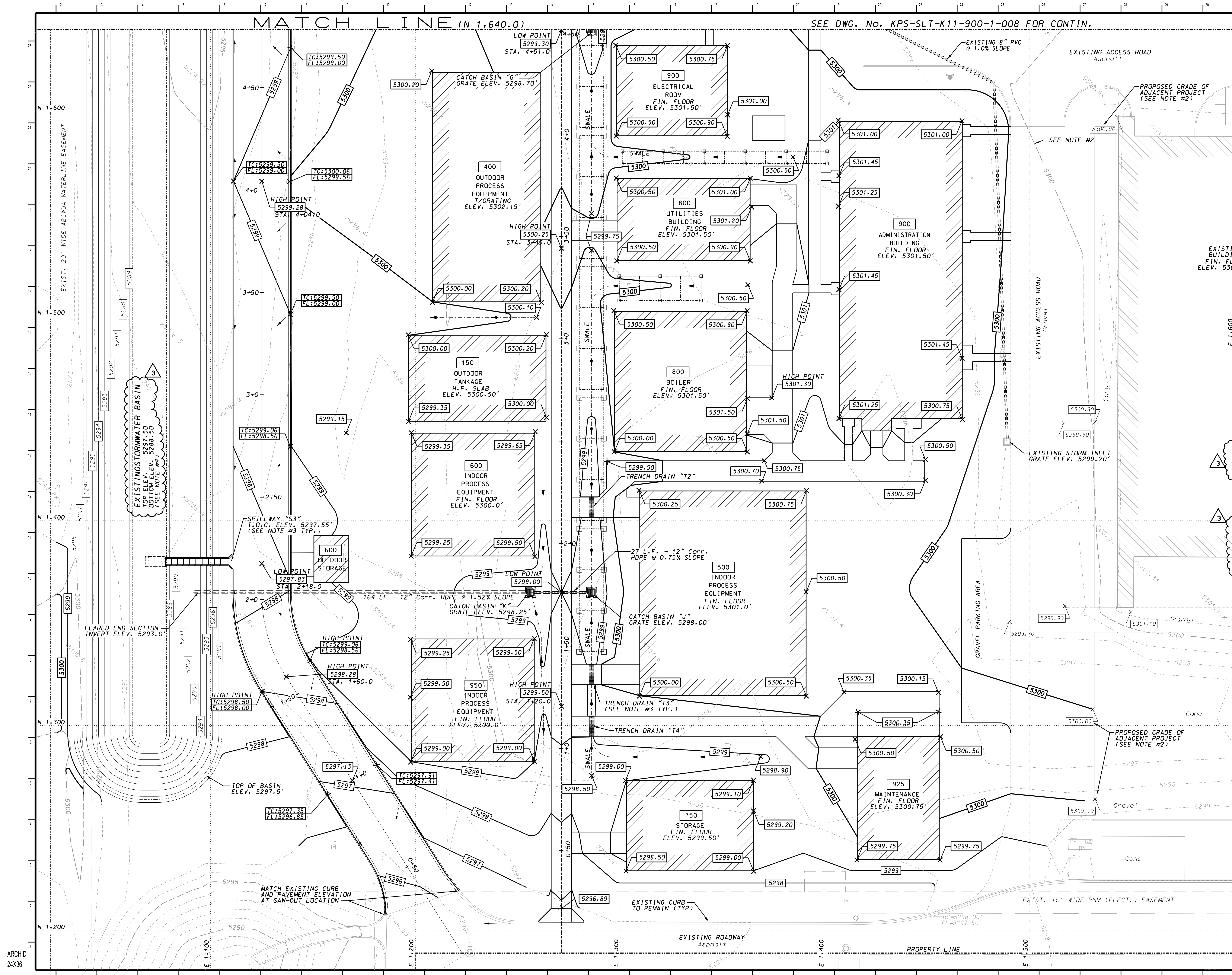
REV	DATE	DESCRIPTION	BY	CHK	APP
2	02-12-25	REV. PER CITY COMMENTS DATED 02-06-25	EJO	AS	ZM
1	11-15-24	REV. GRADING/DRAINAGE AT UNIT 100 & 300	EJO	AS	ZM
0	8-05-24	ISSUED FOR CONSTRUCTION	EJO	AS	ZM



THIS DRAWING IS THE EXCLUSIVE PROPERTY OF KAIROS POWER LLC. AND IS PROPRIETARY
AND CONFIDENTIAL INFORMATION. THE DRAWING AND THE INFORMATION CONTAINED
THEREIN MUST NOT BE DUPLICATED, USED, REPRODUCED, COPIED, DISCLOSED OR
APPROPRIATED IN WHOLE OR IN PART FOR ANY PURPOSE OTHER THAN EXPRESSLY
AUTHORIZED IN WRITING BY KAIROS POWER. THE DRAWING MUST BE RETURNED PROMPTLY
UPON REQUEST.

KPSW PROJECT SAGUARO CONCEPTUAL GRADING AND DRAINAGE PLAN SHEET #1

DRAWN	EJO	CHECKED	AS	APPROVED	CS	DATE	7-30-24
SCALE	1"= 20'	DRAWING NUMBER	218356	PROJECT	KPS-SLT-K11-900-1-008	REV.	2



- NOTES:**
- REFER TO DRAWING No. KPS-SLT-K11-900-1-002 FOR GENERAL NOTES AND LIST OF REFERENCE DRAWINGS.
 - TOPOGRAPHIC SURVEY WAS PERFORMED DURING SITE CONSTRUCTION OF ADJACENT BUILDINGS. EXISTING GRADES MAY NOT EXACTLY REFLECT FIELD CONDITIONS. SEE NOTE #3 ON DWG. No. KPS-SLT-K11-900-1-002.
 - REFER TO DRAWING No. KPS-SLT-K11-900-1-010 FOR DRAINAGE STRUCTURE SCHEDULE AND DETAILS.
 - EXISTING RETENTION POND AND 30" PIPING. RETENTION POND DIMENSIONS, PIPE SIZE AND SLOPE SHOWN ARE TAKEN FROM CITY OF ALBUQUERQUE (COA) APPROVED GRADING AND DRAINAGE PLAN, SHEET No. GR-1 BY TIERRA WEST, LLC OF ALBUQUERQUE, NM
 - RETENTION POND SURFACE DISTURBED BY SPILLWAY OR CULVERT INSTALLATION SHALL BE STABILIZED PER COA SPECIFICATION 1013 (SEEDING).
 - CONTRACTOR IS RESPONSIBLE FOR MAINTAINING STORM RUN-OFF ON SITE DURING CONSTRUCTION.
 - THIS SITE IS LOCATED IN FLOOD ZONE "X" DESIGNATED AS AREAS TO BE OUTSIDE THE 0.2% ANNUAL CHANCE FLOODPLAIN. REFER TO FEMA FIRM MAP 35001C0363G DATED SEPTEMBER 26, 2008- PANEL 363 OF 825.
 - REFER TO DWG. KPS-SLT-K11-900-1-008 FOR LEGAL DESCRIPTION, LOCATION MAP AND BENCHMARK INFORMATION.

HOLD LOG:

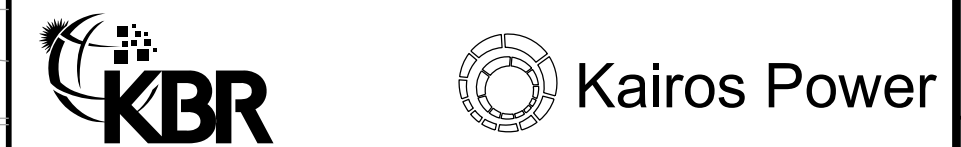
01 FINAL CONNECTION
DETAILS:
SECONDARY CONTAINMENT
CLEAN WATER DRAINAGE
MULTIPLE LOCATIONS

KBR ENGINEERING COMPANY
601 JEFFERSON STREET
HOUSTON, TX 77002
NM SCC NUMBER 1570407

ZAHAEERUDDIN A. MOHAMMEND
PROFESSIONAL ENGINEER - NEW MEXICO
LICENSE NO. 28009
EXPIRES 12/31/2025

NEW MEXICO
26909
PROFESSIONAL ENGINEER

REVISION HISTORY					
REV	DATE	DESCRIPTION	BY	CHK	APP
3	02-12-25	REV. PER CITY COMMENTS DATED 02-06-25	EJO	AS	ZM
2	11-15-24	REV. GRADING/DRAINAGE AT UNIT 150, 600 & 900	EJO	AS	ZM
1	9-24-24	GENERAL REVISION: REV. SITE GRADING & DRAINAGE FOR BLDGS. 150, 600, 800, 900, 925 & 950.	EJO	AS	ZM
0	8-05-24	ISSUED FOR CONSTRUCTION	EJO	AS	ZM



THIS DRAWING IS THE EXCLUSIVE PROPERTY OF KAIROS POWER LLC. AND IS PROPRIETARY AND CONFIDENTIAL INFORMATION. THE DRAWINGS AND THE INFORMATION CONTAINED THEREIN MUST NOT BE DUPLICATED, USED, REPRODUCED, COPIED, DISCLOSED OR APPROPRIATED IN WHOLE OR IN PART FOR ANY PURPOSE OTHER THAN EXPRESSLY AUTHORIZED IN WRITING BY KAIROS POWER. THE DRAWING MUST BE RETURNED PROMPTLY UPON REQUEST.

**KPSW PROJECT SAGUARO
CONCEPTUAL GRADING AND
DRAINAGE PLAN
SHEET #2**

DRAWN	EJO	CHECKED	AS	APPROVED	CS	DATE	7-30-24
SCALE	1" = 20'	DRAWING NUMBER	KPS-SLT-K11-900-1-009				REV.
PROJ	218356						3

