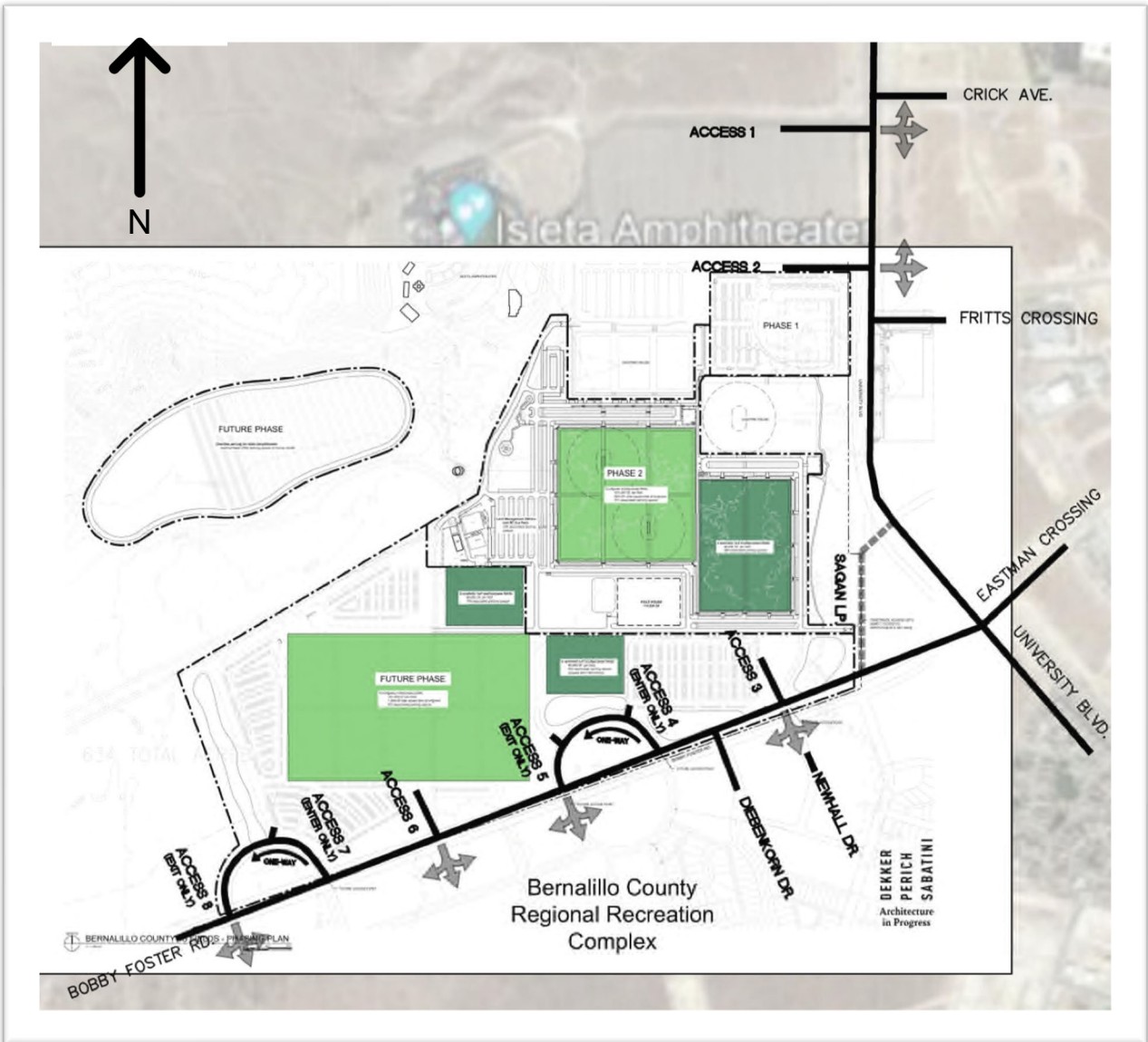


Development Description

The proposed BCRRRC will expand the existing soccer facility from six outdoor soccer fields to a total of 30 outdoor soccer fields and a fieldhouse with one indoor soccer field and 5000 square feet (sf) of office space. The total land usage for the BCRRRC is 250 acres, 70-acres of which are currently developed. The site is part of the Mesa del Sol Community, a 12,900-acre mixed-use development south of the Albuquerque International Sunport. To date, less than 10% of the Mesa del Sol Community has been developed. See Vicinity Map below.



The anticipated implementation year for this project is 2026 and the horizon year is 2036. According to the Institute of Traffic Engineers' (ITE) trip generation rates, the project is anticipated to generate 102 new entering trips and 62 new exiting trips during the weekday AM Peak Hour.