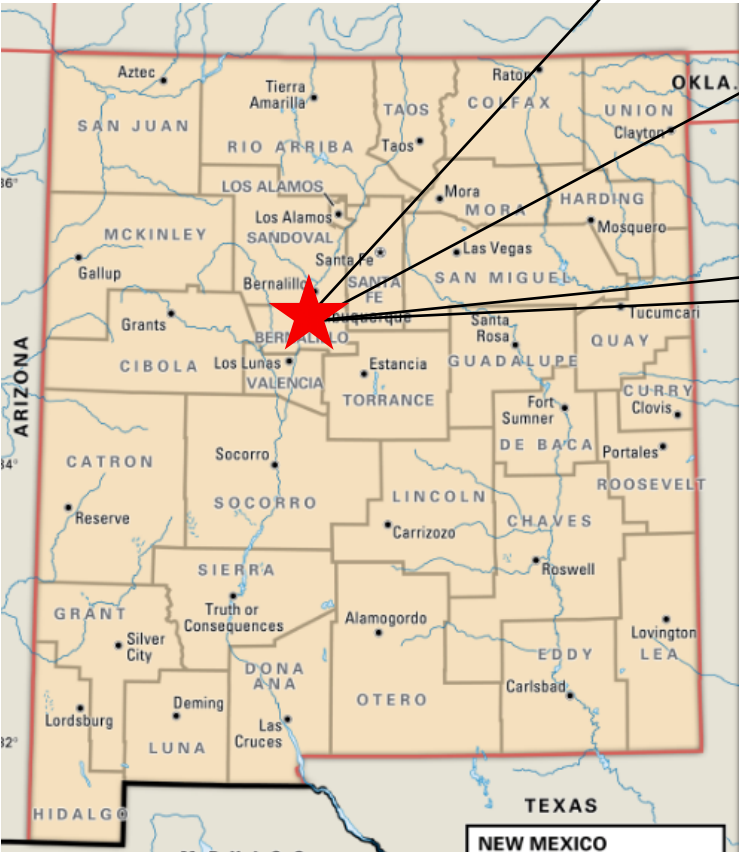


MESA DEL SOL



STRAND LOOP SE AND ROTHKO AVE SE

TEMPORARY EROSION AND SEDIMENT CONTROL PLAN

PAGE INDEX	
1	TITLE PAGE
2	SWPPP INFO AND NOTES
3	DETAILS
4	TEMPORARY EROSION CONTROL PLAN



GPS COORDINATES: 34.9842, -106.6193

 <b>06/22/2022</b> CPESC Stamp	<b>MESA DEL SOL</b> <small>PROJECT TITLE</small>	
	<b>ALBUQUERQUE, NM, BERNALILLO COUNTY</b> <small>CITY, COUNTY, STATE</small>	
	<b>06/22/2022</b> <small>DATE</small>	
	<b>C. DURKIN</b> <small>DRAWN BY</small>	

STORMWATER POLLUTION PREVENTION PLAN INFORMATION

PERMIT NUMBER: NMR1004W6

NMR100000 STATE OF NEW MEXICO, EXCEPT INDIAN COUNTRY  
NMR10I000 INDIAN COUNTRY WITHIN THE STATE OF NEW MEXICO, EXCEPT NAVAJO RESERVATION LANDS THAT ARE COVERED UNDER ARIZONA PERMIT AZR10I000 AND UTE MOUNTAIN RESERVATION LANDS THAT ARE COVERED UNDER COLORADO PERMIT COR10I000.

OPERATOR NAME: TM, LLC / ABRAZO HOMES

OPERATOR POINT OF CONTACT: CHRIS MADRID 505-228-1401 CHRIS@ABRAZOHOMES.COM

NOI PREPARED BY: INSPECTIONS PLUS

PROJECT/SITE NAME: MESA DEL SOL



PROJECT/SITE ADDRESS: STRAND LOOP SE AND ROTHKO AVE SE ALBUQUERUQE, NM

LATITUDE	34.9842
LONGITUDE	-106.6193
ESTIMATED PROJECT START DATE	07/05/2022
ESTIMATED PROJECT COMPLETION DATE	12/31/2024
ESTIMATED AREA TO BE DISTURBED	3.5
TYPE OF CONSTRUCTION	VERTICAL- RESIDENTIAL
DEMOLITION OF ANY STRUCTURES, 10,000 SQ FT OF GREATER BUILT OR RENOVATED BEFORE JANUARY 1, 1980?	NO
WAS THE PREDEVELOPMENT LAND USED FOR AGRICULTURE?	NO
COMMENCED EARTH DISTURBING ACTIVITIES?	NO
DISCHARGE TO MS4? MS4 NAME?	N/A MESA DEL SOL POND 5
SURFACE WATERS WITHIN 50FT?	NO
RECEIVING WATER?	MESA DEL SOL POND 5
IS RECEIVING WATER IMPAIRED? TIER DESIGNATION	NO
WHAT ARE THE IMPAIRMENTS, IF ANY?	N/A

SWPPP CONTACT INFORMATION: CHRIS MADRID 505-228-1401  
ENDANGERED SPECIES CRITERIA: CRITERION "A"; NO CRITICAL HABITATS WITHIN PROJECT AREA  
HISTORIC PRESERVATION CRITERIA: CRITERION "A"; PRIOR SURVEYS

EROSION CONTOL NOTES  
ESC Plan Standard Notes

- 1.All Erosion and Sediment Control (ESC) work on these plans, except as otherwise stated or provided hereon shall be permitted, constructed, inspected, and maintained in accordance with:
- a.The City Ordinance § 14-5-2-11, the ESC Ordinance,  
b.The EPA's 2022 Construction General Permit (CGP), and  
c.The City Of Albuquerque Construction BMP Manual.
- 2.All BMP's must be installed prior to beginning any earth moving activities except as specified hereon in the Phasing Plan. Construction of earthen BMP's such as sediment traps, sediment basins, and diversion berms shall be completed and inspected prior to any other construction or earthwork. Self-inspection is required after installation of the BMPs and prior to beginning construction.
- 3.Self-inspections - At a minimum a routine compliance self-inspection is required to review the project for compliance with the Construction General Permit once every 14 days and after any precipitation event of 1/4 inch or greater until the site construction has been completed and the site determined as stabilized by the city. Reports of these inspections shall be kept by the person or entity authorized to direct the construction activities on the site and made available upon request.
- 4.Corrective action reports must be kept by the person or entity authorized to direct the construction activities on the site and made available upon request.
- 5.Stabilization reports must be kept by the person or entity authorized to direct the construction activities on the site and made available upon request. Reports should include records of weed removal per City Ordinance (§ 9-8-1), sterilization, soil test results and recommendation, materials and manufacturer's specifications for application rates, estimated functional longevity, methods of application, inspection and maintenance. The reduced self-inspection schedule in CGP 4.4.1 applies to stabilized area and any damaged or worn stabilization must be identified in the reports along with weed problems. Corrective actions for stabilization shall be documented in a stabilization report including actual rates and dates of stabilization, and the materials and manufacturer's specifications used.
- 6.BMPs shall be inspected and maintained until all disturbed areas are stabilized in accordance with the Final Stabilization Criteria (CGP 2.2.14.b). Generally, all disturbed areas, other than structures and impervious surfaces, must have uniform perennial vegetation that provides 70 percent or more of the cover provided by native vegetation or seed the disturbed area and provide non-vegetative mulch that provides cover for at least three years without active maintenance. Final stabilization must be approved by the City of Albuquerque prior to removal of BMPs and discontinuation of inspections.

  06/22/2022 CPESC Stamp	MESA DEL SOL <small>PROJECT TITLE</small>	
	ALBUQUERQUE, NM, BERNALILLO COUNTY <small>CITY, COUNTY, STATE</small>	
	06/22/2022 <small>DATE</small>	
	C. DURKIN <small>DRAWN BY</small>	



SEDIMENT TRACK OUT CONTROL



SILT FENCE



BMP Objectives

- Sediment Control

INLET PROTECTION



BMP Objectives

- Sediment Control
- Sheet Flow Runoff Control
- Wind Erosion Control

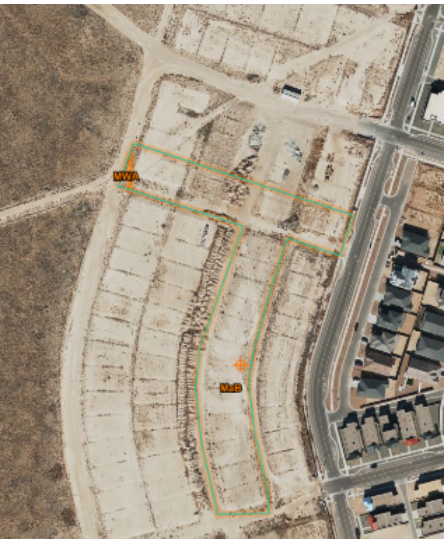
BMP Objectives

- Sediment Control
- Sheet Flow Runoff Control
- Wind Erosion Control

Bernalillo County and Parts of Sandoval and Valencia Counties, New Mexico (NM600)

Bernalillo County and Parts of Sandoval and Valencia Counties, New Mexico (NM600)

Map Unit Symbol	Map Unit Name	Acres in AOI	Percent of AOI
MaB	Madurez loamy fine sand, 1 to 5 percent slopes	2.8	99.1%
MWA	Madurez-Wink associatin, gently sloping	0.0	0.9%
Totals for Area of Interest		2.9	100.0%



Report — Conservation Planning

Soil properties and interpretations for conservation planning. The surface mineral horizon properties are displayed. Organic surface horizons are not displayed.

Bernalillo County and Parts of Sandoval and Valencia Counties, New Mexico

Map symbol and soil name	Pct. of map unit	Slope RV	USLE Slope Length ft.	Runoff	T Factor	WEI	WEG	Erosion	Drainage	NIRR LCC	Hydrologic Group	Surface					
												Depths in.	Kf Factor	Frag-ments RV	Sand RV	Silt RV	Clay RV
MaB—Madurez loamy fine sand, 1 to 5 percent slopes																	
Madurez	90	3.0	200	Low	5	134	2	—	Well drained	7e	B	0 - 3	.24	—	83	9 7	
MWA—Madurez-Wink associatin, gently sloping																	
Madurez	55	3.0	180	Low	5	86	3	—	Well drained	7e	B	0 - 3	.24	—	70	16 12	
Wink	25	4.0	180	Very low	5	86	3	—	Well drained	7e	A	0 - 3	.28	10	70	16 13	

LEGEND

TEMPORARY EROSION AND SEDIMENT CONTROL PLAN

PP-PP-PP- PROJECT PERIMETER

—BW—BW— EXISTING BLOCK WALL

Ⓢ POSTING SIGN

⊗ OUTFALL

STAGING AREA

← FLOW DIRECTION

SF-SF-SF-SF SILT FENCE

DEBRIS CONTAINMENT

CHEMICAL TOILET

CONCRETE WASHOUT

STABILIZED CONTRUCTION ENTRANCE

TEMPORARY SEDIMENT POND



06/22/2022

CPESC Stamp

MESA DEL SOL

PROJECT TITLE

ALBUQUERQUE, NM, BERNALILLO COUNTY

CITY, COUNTY, STATE

06/22/2022

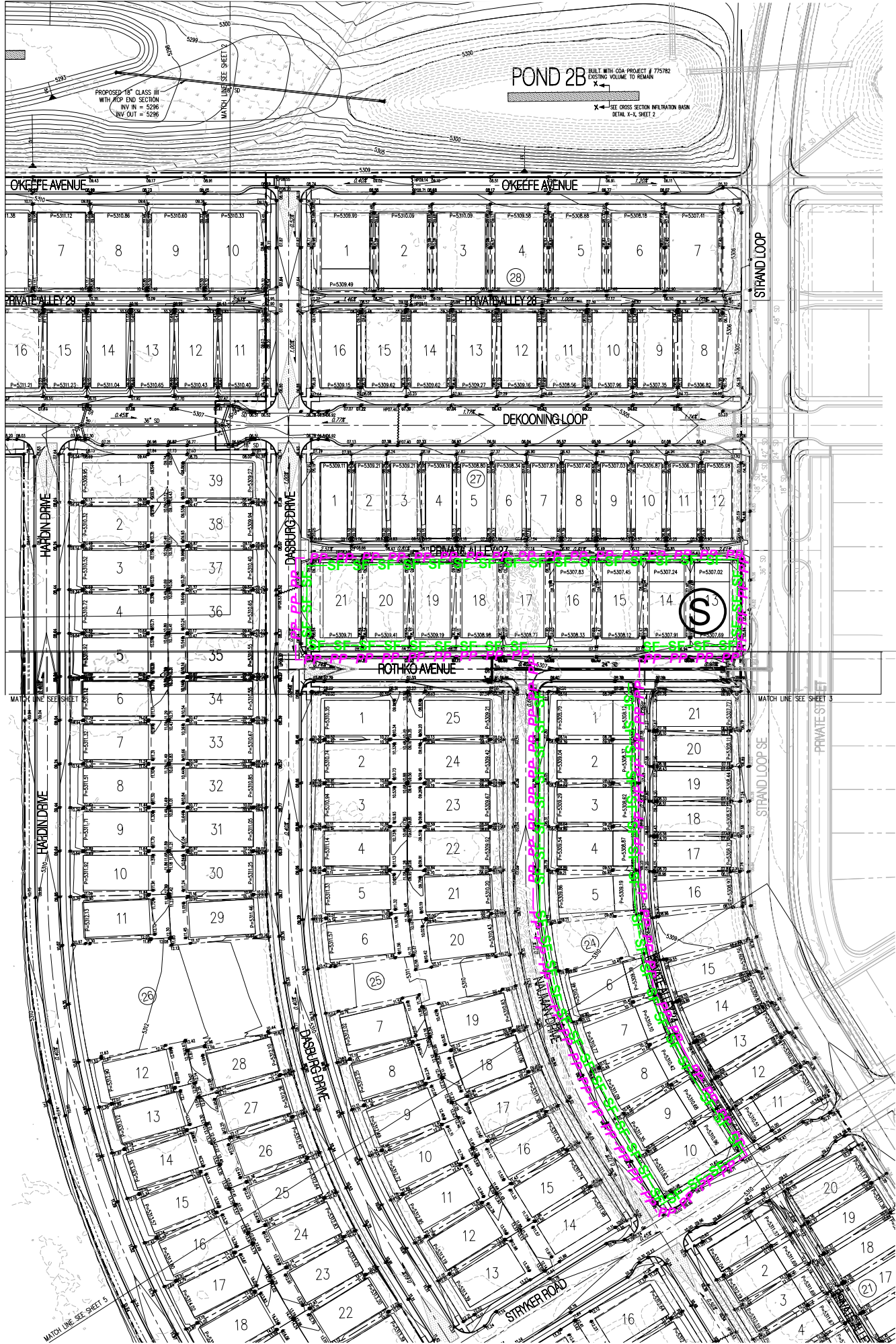
DATE

C. DURKIN

DRAWN BY







ROLE	COMPANY	REPRESENTATIVE NAME	PHONE #	EMAIL
OWNER/ OPERATOR	TQM/LLC / ABRAZO HOMES	CHRIS MADRID	505-288-1401	CHRIS@ABRAZOHOMES.COM
SWPPP INSPECTIONS	TQM/LLC / ABRAZO HOMES	CHRIS MADRID	505-288-1401	CHRIS@ABRAZOHOMES.COM
BMP MAINTENANCE	INSPECTIONS PLUS, LLC.	JEFF HART	505-344-9410	JEFF@INSPECTIONSPLUS.COM

CONSTRUCTION ACTIVITY, BMPS, AND LOCATION	
INITIAL PHASE	1. INSTALL PERIMETER BMPS 2. POST NOTICES 3. DELINEATE STAGING AREA, WITH DUMPSTER AND SANITARY FACILITIES 4. INSTALL CONCRETE WASHOUT
INTERIM PHASE	SITE GRADING/CONSTRUCTION  1. SITE GRADING 2. UTILITIES AND INFRASTRUCTURE 3. VERTICAL STRUCTURES AND PAVING 4. IMPLEMENT STABILIZATION PROCEDURES IN AREAS WHERE WORK IS COMPLETE OR CEASED FOR MORE THAN 14 DAYS.
FINAL PHASE	FINAL STABILIZATION  1. IMPLEMENT STABILIZATION PROCEDURES IN AREAS WHERE WORK IS COMPLETE OR CEASED FOR MORE THAN 14 DAYS. 2. REMOVE TEMPORARY BMPS 3. PREPARE FINAL SEEDING/LANDSCAPING AND MONITOR UNTIL FINAL STABILIZATION IS REACHED

06/22/2022  
CPESC Stamp

MESA DEL SOL  
PROJECT TITLE

ALBUQUERQUE, NM, BERNALILLO COUNTY  
CITY, COUNTY, STATE

06/22/2022  
DATE

C. DURKIN  
DRAWN BY