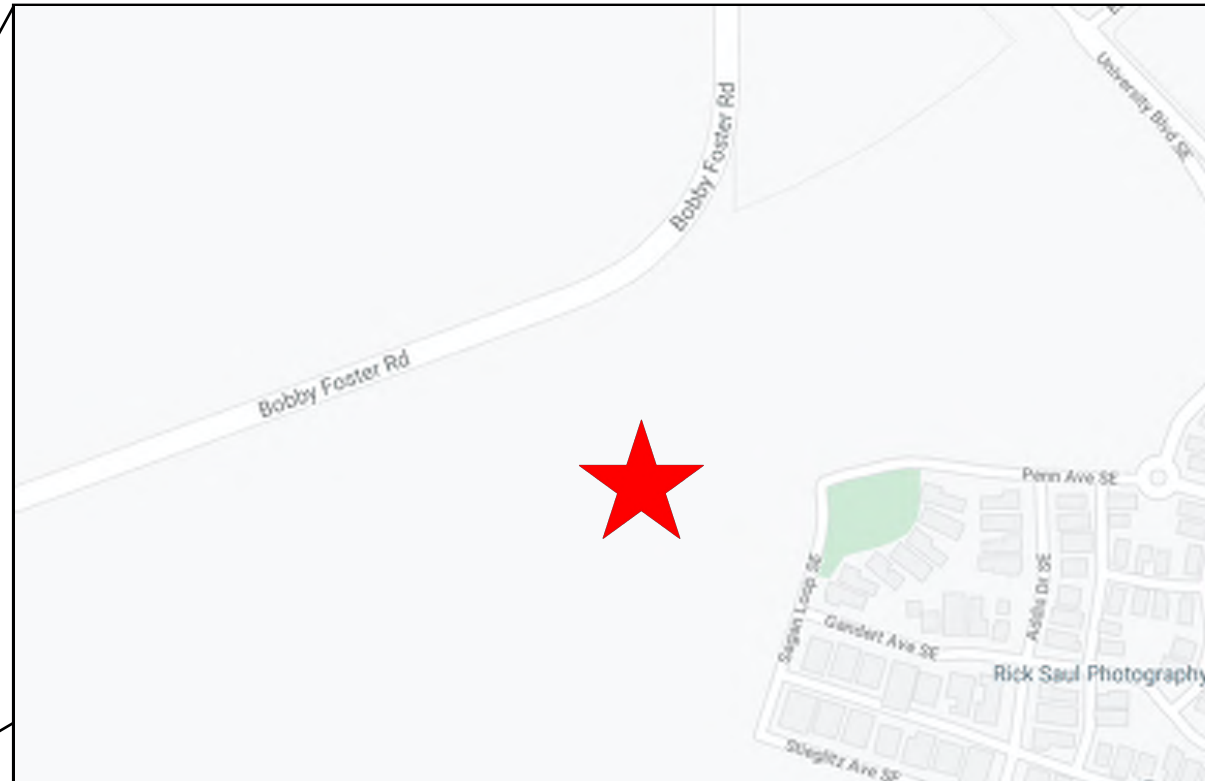


BOBBY FOSTER ROAD & UNIVERSITY BLVD
IMPROVEMENTS, PH. I
TEMPORARY SEDIMENT AND EROSION CONTROL DRAWINGS
ALBUQUERQUE, BERNALILLO COUNTY, NM

DRAWING INDEX

- 1 COVER SHEET
2 GENERAL NOTES
3 BEST MANAGEMENT PRACTICES
4 BEST MANAGEMENT PRACTICES
5 BEST MANAGEMENT PRACTICES
6 BEST MANAGEMENT PRACTICES
7 TEMPORARY SEDIMENT & EROSION CONTROL PLAN (TESCP)
8 FINAL STABILIZATION PLAN



- SWPPP
- Stormwater
- Erosion Control
- Reclamation
- Seeding

www.e2rc.com | 505.867.4040

[illegible]

**GUZMAN CONSTRUCTION
SOLUTIONS, LLC
BOBBY FOSTER RD. &
UNIVERSITY BLVD. IMP., PH. I
ALBUQUERQUE, NM**

DESIGNED BY:
K. FETTER, P.E.
DRAWN BY:
S. FETTER

SHEET:

COVER

GENERAL NOTES

THE NPDES COMPLIANCE SWPPP DRAIING AND ASSOCIATED DOCUMENTATION IS AND SHALL BE CONSIDERED A LIVING DOCUMENT ALLOWING FOR MODIFICATIONS AS SITE CONDITIONS CHANGE OR DICTATE.

ALL SITE FEATURES (EXISTING/PROPOSED GRADES, EXISTING CONSTRUCTION, FUTURE CONSTRUCTION, ETC.) SHOWN IS PER INFORMATION FROM OTHERS.

MINIMUM REQUIREMENTS TO FURTHER DEVELOP OR MODIFY THIS STORMWATER POLLUTION PREVENTION PLAN (SWPPP) DRAWING SHALL BE BASED ON THE CURRENT EDITION OF THE NEW MEXICO STATE HIGHWAY AND TRANSPORTATION DEPARTMENT (NMSHTD), NPDES LAW AND CITY OF ALBUQUERQUE ORDINANCE § 14-5-2-11.

ALL OPERATORS SHALL SUBMIT A NOTICE OF INTENT (NOI). THE NOI SHALL BE ACTIVE AND POSTED ON THE EPA'S WEBSITE PRIOR TO COMMENCING EARTH DISTURBING ACTIVITIES.

LOCATE TEMPORARY WASHOUT, ANCHORED TOILETS, CONSTRUCTION ENTRANCE AND PARKING, STAGING, REFUELING, TRASH CONTAINMENT AREA TO MINIMIZE SITE DISTURBANCE DURING CONSTRUCTION ACTIVITY.

THE OPERATOR IS REQUIRED TO REGULARLY PERFORM STREET SWEEPING AND CLEAN - UP MEASURES IN THE EVENT OF SEDIMENT TRACK - OUT.

THE FOLLOWING ARE STANDARD EROSION CONTROL REQUIREMENTS PER THE CITY OF ALBUQUERQUE STORMWATER QUALITY DEPARTMENT (MARCH 24, 2021):

ALL EROSION AND SEDIMENT CONTROL (ESC) WORK ON THESE PLANS, EXCEPT AS OTHERWISE STATED OR PROVIDED HEREON SHALL BE PERMITTED, CONSTRUCTED, INSPECTED, AND MAINTAINED IN ACCORDANCE WITH:

THE CITY ORDINANCE § 14-5-2-11, THE ESC ORDINANCE;
THE EPA'S 2017 CONSTRUCTION GENERAL PERMIT (CGP); AND
THE CITY OF ALBUQUERUQ CONSTRUCTION BMP MANUAL

ALL TEMPORARY SEDIMENT AND EROSION CONTROL MEASURES MUST BE INSTALLED PRIOR TO BEGINNING ANY EARTH MOVING ACTIVITIES EXCEPT AS SPECIFIED HEREON IN THE PHASING PLAN. CONSTRUCTION OF EARTHEN BMPS SUCH AS SEDIMENT TRAPS, SEDIMENT BASINS, AND DIVERSION BERMS SHALL BE COMPLETED AND INSPECTED PRIOR TO ANY OTHER CONSTRUCTION OR EARTHWORK. SELF-INSPECTION IS REQUIRED AFTER INSTALLATION OF THE BMPS AND PRIOR TO BEGINNING CONSTRUCTION.

SEE SECTION 3.5 OF THE SWPPP NARRATIVE OR THE CONTRACTOR'S SCHEDULE (TAB II OF SWPPP BINDER) FOR BMP SCHEDULING OR PHASING.

SELF-INSPECTIONS - AT A MINIMUM A ROUTINE COMPLIANCE SELF-INSPECTION IS REQUIRED TO REVIEW THE PROJECT FOR COMPLIANCE WITH THE CONSTRUCTION GENERAL PERMIT ONCE EVERY 14 DAYS AND AFTER ANY PRECIPITATION EVENT OF 1/4 INCH OR GREATER UNTIL THE SITE CONSTRUCTION HAS BEEN COMPLETED AND THE SITE DETERMINED AS STABILIZED BY THE CITY. REPORTS OF THESE INSPECTIONS SHALL BE KEPT BY THE PERSON OR ENTITY AUTHORIZED TO DIRECT THE CONSTRUCTION ACTIVITIES ON THE SITE AND MADE AVAILABLE UPON REQUEST.

CORRECTIVE ACTION REPORTS MUST BE KEPT BY THE PERSON OR ENTITY AUTHORIZED TO DIRECT THE CONSTRUCTION ACTIVITIES ON THE SITE AND MADE AVAILABLE UPON REQUEST.

STABILIZATION REPORTS MUST BE KEPT BY THE PERSON OR ENTITY AUTHORIZED TO DIRECT THE CONSTRUCTION ACTIVITIES ON THE SITE AND MADE AVAILABLE UPON REQUEST. REPORTS SHOULD INCLUDE RECORDS OF WEED REMOVAL PER CITY ORDINANCE (§ 9-8-1), STERILIZATION, SOIL TEST RESULTS AND RECOMMENDATION, MATERIALS AND MANUFACTURER'S SPECIFICATIONS FOR APPLICATION RATES, ESTIMATED FUNCTIONAL LONGEVITY, METHODS OF APPLICATION, INSPECTION AND MAINTENANCE. THE REDUCED SELF-INSPECTION SCHEDULE IN CGP 4.4.1 APPLIES TO STABILIZED AREA AND ANY DAMAGED OR WORN STABILIZATION MUST BE IDENTIFIED IN THE REPORTS ALONG WITH WEED PROBLEMS. CORRECTIVE ACTIONS FOR STABILIZATION SHALL BE DOCUMENTED IN A STABILIZATION REPORT INCLUDING ACTUAL RATES AND DATES OF STABILIZATION, AND THE MATERIALS AND MANUFACTURER'S SPECIFICATIONS USED.

BMPS SHALL BE INSPECTED AND MAINTAINED UNTIL ALL DISTURBED AREAS ARE STABILIZED IN ACCORDANCE WITH THE FINAL STABILIZATION CRITERIA (CGP 2.2.14.B). GENERALLY, ALL DISTURBED AREAS, OTHER THAN STRUCTURES AND IMPERVIOUS SURFACES, MUST HAVE UNIFORM PERENNIAL VEGETATION THAT PROVIDES 70 PERCENT OR MORE OF THE COVER PROVIDED BY NATIVE VEGETATION OR SEED THE DISTURBED AREA AND PROVIDE NON-VEGETATIVE MULCH THAT PROVIDES COVER FOR AT LEAST THREE YEARS WITHOUT ACTIVE MAINTENANCE. FINAL STABILIZATION MUST BE APPROVED BY THE CITY OF ALBUQUERQUE PRIOR TO REMOVAL OF BMPS AND DISCONTINUATION OF INSPECTIONS.

PROJECT DETAILS

NPDES ID: NMR1003i5, NMR1003OM

ADDRESS: BOBBY FOSTER BLVD SE & UNIVERSITY BLVD SE, ALBUQUERQUE, NM 87105

GPS COORDINATE: 34.989244, -106.622661

DISTURBED ACREAGE: 15.9

RECEIVING WATERS: TIJERAS ARROYO

IMPAIRED/TIERED WATERS: NONE

ENDANGERED SPECIES: CRITERION A

HISTORIC PRESERVATION: HISTORIC PROPERTIES ARE NOT PRESENT.

FINAL STABLIZATION TYPE: ASPHALT PAVING, SIDEWALKS, CURBS, GUTTERS, NM APWA 1012 SEEDING WITH FERTILIZER AND HYDROMULCH IN LIEU OF STRAW

REGULATING AUTHORITY: ENVIRONMENTAL PROTECTION AGENCY (EPA)

REGULATING PERMIT: 2017 CONSTRUCTION GENERAL PERMIT

PROJECT OWNER:
MDS INVESTMENTS, LLC
4020 VASSAR DR. NE, SUITE H
ALBUQUERQUE, NM 87107

OWNER CONTACT:
KYLE BODHAINE
MEMBER

GENERAL CONTRACTOR (GC):
GUZMAN CONSTRUCTION SOLUTIONS, LLC
6020 INDUSTRY WAY SE
ALBUQUERQUE, NM 87105

GC CONTACT:
EDDIE GONZALES
(505) 975-8149



					DATE
					REVISION ITEM
					#

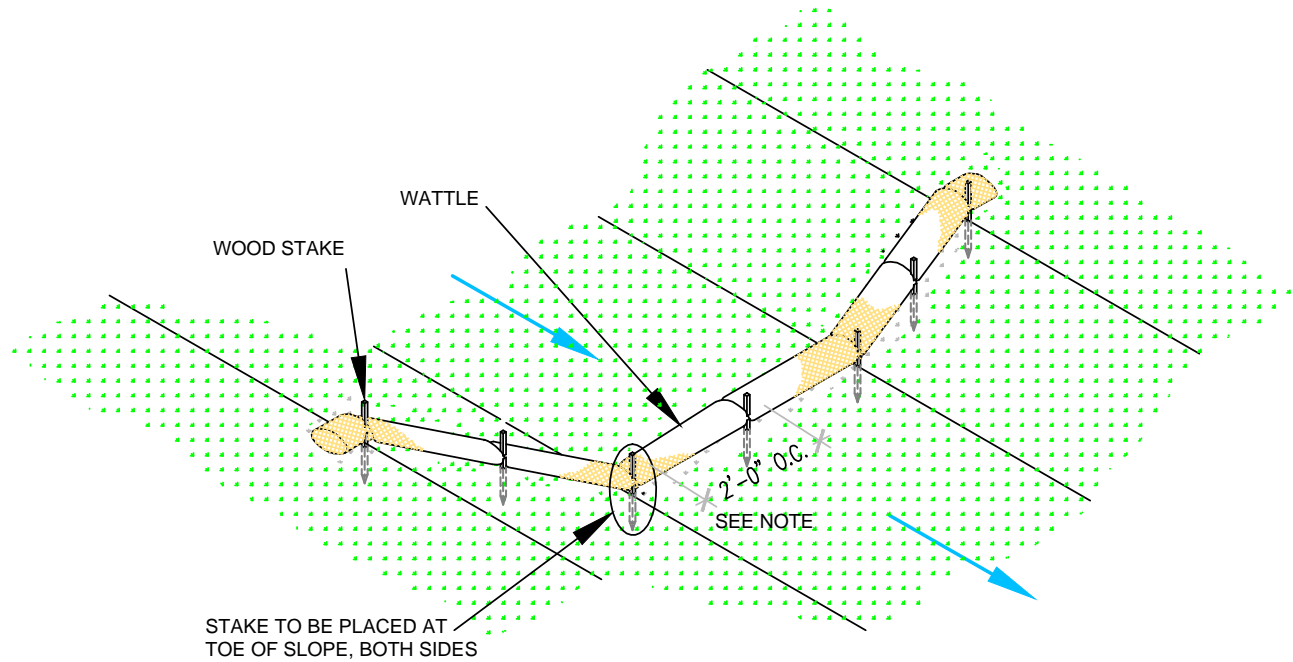
GUZMAN CONSTRUCTION SOLUTIONS, LLC
BOBBY FOSTER RD. & UNIVERSITY BLVD. IMP., PH. I
SWPPP NOTES



www.e2rc.com | 505.867.4040

DESIGNED BY:
K. FETTER, P.E.
DRAWN BY:
S. FETTER

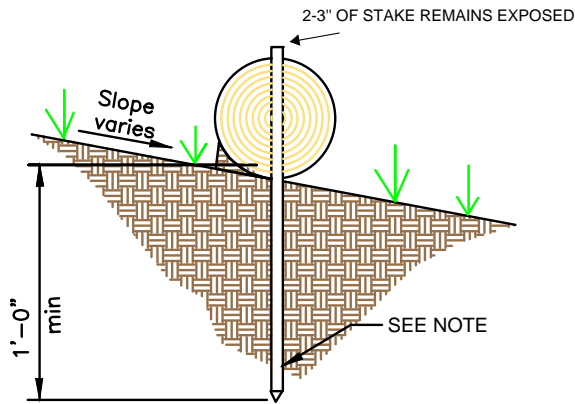
SHEET:
GENERAL
NOTES



**WATTLE
WITHOUT BLANKET**

NTS

2' FOR DRAWING ONLY. 8' MAX
SPACING BETWEEN STAKES



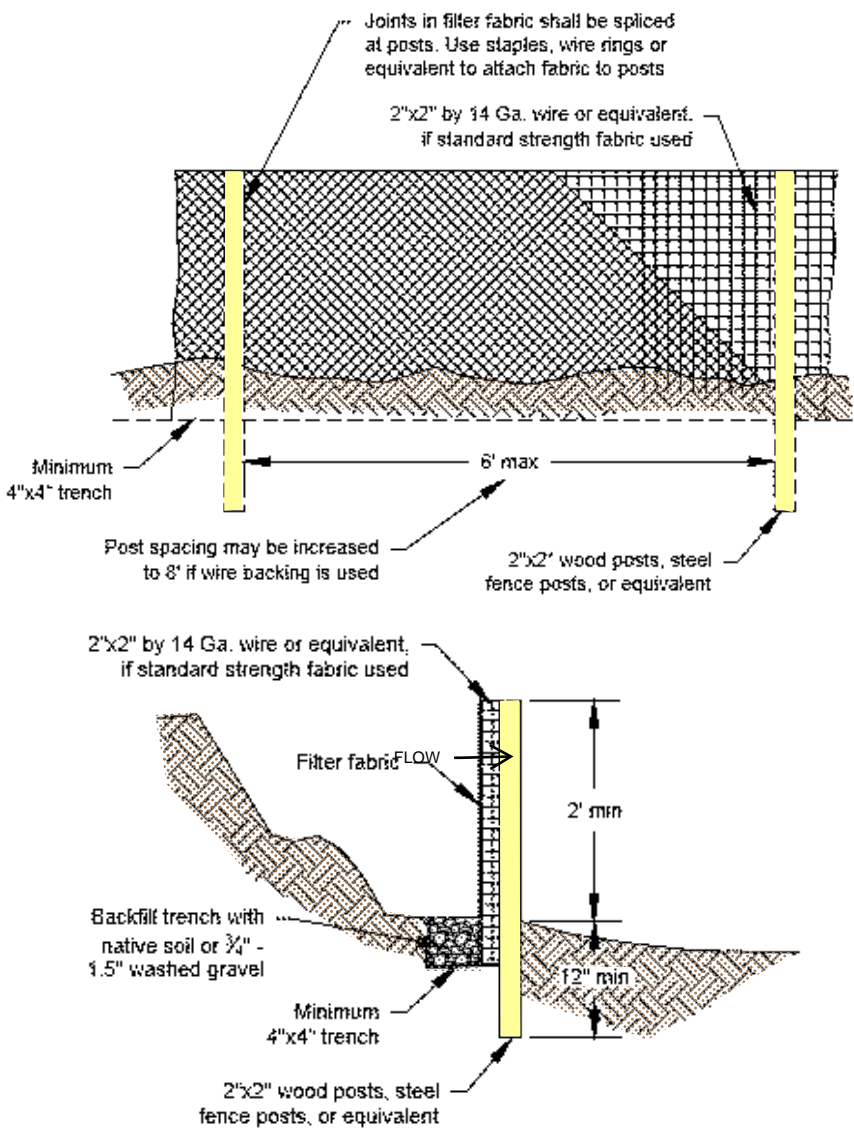
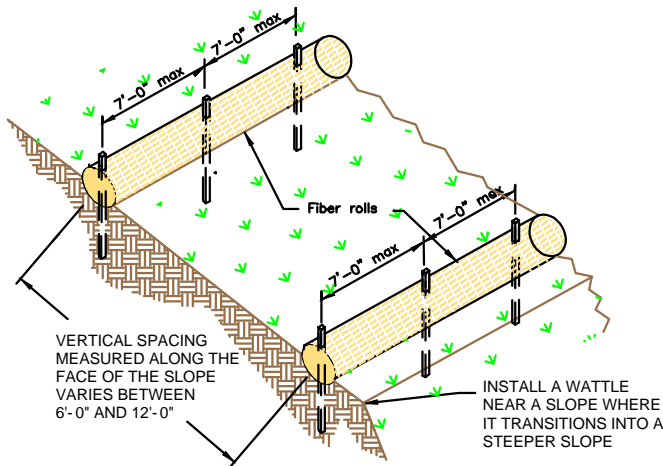
WATTLE

NTS

SECURE WATTLE WITH 18-24" STAKES EVERY 3-4' AND STAKES ON EACH END OF THE WATTLE.

DRIVE STAKES PERPENDICULAR TO THE SLOPE FACE AND THROUGH THE MIDDLE OF THE WATTLE LEAVING AT LEAST 2-3" OF THE STAKE ABOVE THE WATTLE.

VERTICAL SPACING DEPENDENT ON SLOPE GRADIENT.



SILT FENCE

NTS

SILT FENCE IS TO BE PLACED PERPENDICULAR TO THE SLOPE OF THE SITE.

DIG A 4"X4" MINIMUM TRENCH UPSTREAM OF THE SILT FENCE. DRIVE STAKES AT LEAST 1' DEEP ON THE DOWNSTREAM EDGE.

RUN THE SILT FENCE ON THE INSIDE OF THE STAKES AND SECURE WITH HOG RINGS, WIRE, ZIP TIES OR STAPLES.

IF ONE CONTINUOUS PIECE OF FABRIC IS NOT AVAILABLE, OVERLAP THE FABRIC AT LEAST THE WIDTH OF THE STAKE AND SECURE WITH HOG RINGS, WIRE, ZIP TIES OR STAPLES.

COVER TRENCH WITH BACKFILLED COMPACTED SOIL, GRAVEL OR ROCK.



www.e2rc.com | 505.867.4040

- SWPPP
- Stormwater
- Erosion Control
- Reclamation
- Seeding



**GUZMAN CONSTRUCTION
SOLUTIONS, LLC
BOBBY FOSTER RD. &
UNIVERSITY BLVD. IMP., PH. I
BMP DETAILS**

DESIGNED BY:
K. FETTER, P.E.
DRAWN BY:
S. FETTER

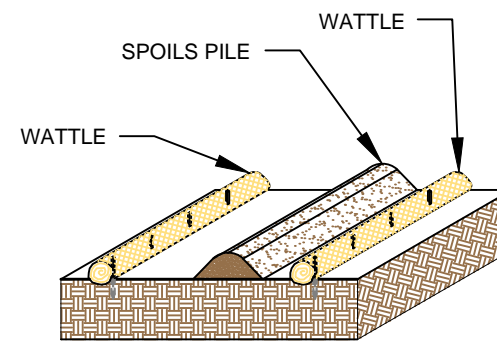
SHEET:

3

DATE

REVISION ITEM

#



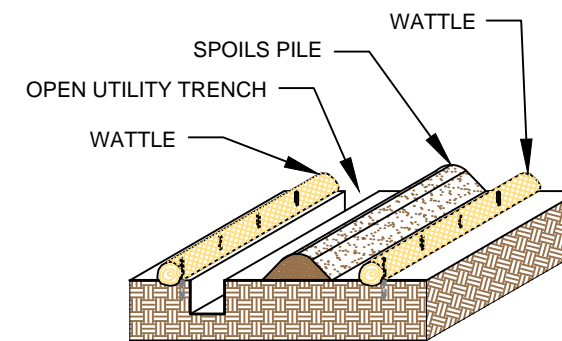
SPOILS PILE PROTECTION

PLACE WATTLES IN FUTURE LOCATIONS OF SPOILS STOCKPILES PRIOR TO CONSTRUCTION.

PLACE WATTLES CONTINUOUSLY ALONG THE EXTENT OF THE SPOILS STOCKPILE.

ANCHOR THE WATTLES USING A MINIMUM OF 1" X 2" X 18" WOODEN STAKES OR SAND BAGS.

ONCE/IF THE SPOILS STOCKPILE IS DEPLETED OR MOVED,
REMOVE THE WATTLES AND REUSE THEM IN THE NEXT
LOCATION.



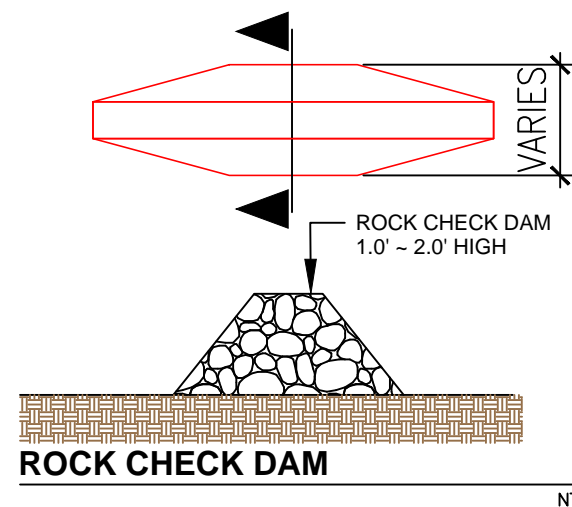
OPEN TRENCH SPOILS PILE PROTECTION

PLACE WATTLES CONTINUOUSLY ALONG THE EXTENT OF THE UTILITY TRENCH AND FUTURE LOCATION OF THE SPOILS STOCKPILE PRIOR TO EXCAVATION OF THE UTILITY.

WATTLES ARE TO REMAIN ANCHORED IN PLACE UNTIL THE UTILITY TRENCH IS BACKFILLED.

ANCHOR THE WATTLES USING A MINIMUM 1"X2"X18" WOODEN STAKE OR SANDBAGS.

ONCE THE TRANCH IS BACKFILLED, WATTLES MAY BE REMOVED AND REUSED IN THE NEXT SECTION OF EXCAVATION PROVIDED THEY ARE IN GOOD CONDITION.

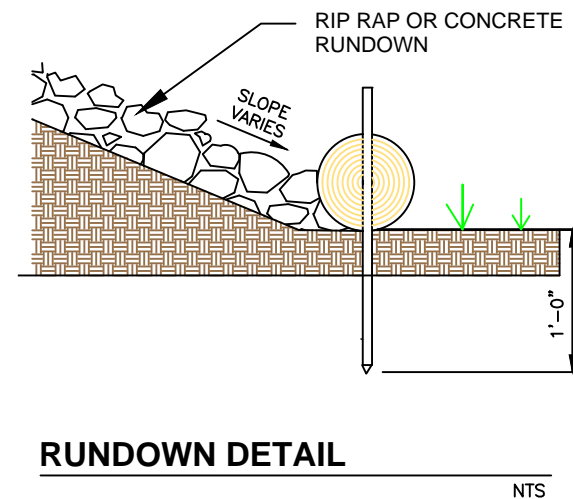


ROCK CHECK DAM

PLACE CHECK DAMS AT REGULARLY SPACED INTERVALS
ALONG SWALE OR DRAINAGE DITCH.

HEIGHTS SHOULD ALLOW FOR POOLS TO DEVELOP
UPSTREAM OF EACH CHECK DAM.

IF MULTIPLE DAMS ARE USED, THE TOP OF THE LOWER DAM SHOULD BE THE SAME HEIGHT AS THE ELEVATION AS THE TOE OF THE UPPER DAM.



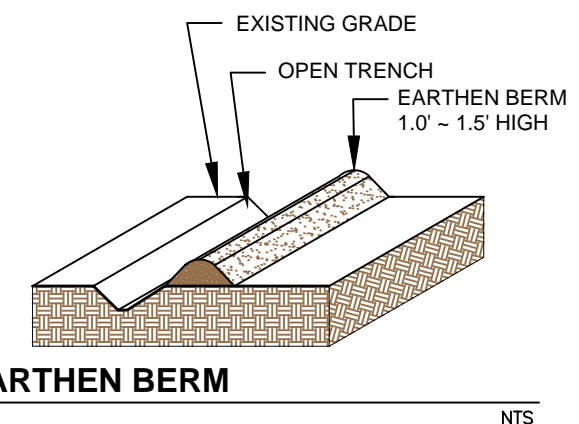
RUNDOWN DETAIL

8' MAX SPACING BETWEEN STAKES

PLACE WATTLES AT THE TOE OF SLOPE. THE RIP RAP OR CONCRETE RUNDOWN SHOULD ABUT THE WATTLE.

ANCHOR THE WATTLES WITH WOODEN STAKES. DRIVE THE STAKE A MINIMUM OF 12" INTO THE MIDDLE OF THE WATTLE AND SOIL UNDERNEATH.

2-3" OF THE WOODEN STAKE SHOULD BE PRESENT ABOVE THE WATTLE.



EARTHEN BERM

CONSTRUCT AN EARTHEN BERM DOWN HILL OF THE AREA TO BE CONTROLLED.

BERM SHOULD BE A MINIMUM 12" HIGH AND 12" WIDE.

USE EQUIPMENT TO COMPACT EARTHEN BERM BY ROLLING OVER BERM TO MINIMIZE SPREAD.



- SWPPP
- Stormwater
- Erosion Control
- Reclamation
- Seeding

www.e2rc.com | 505.867.4040

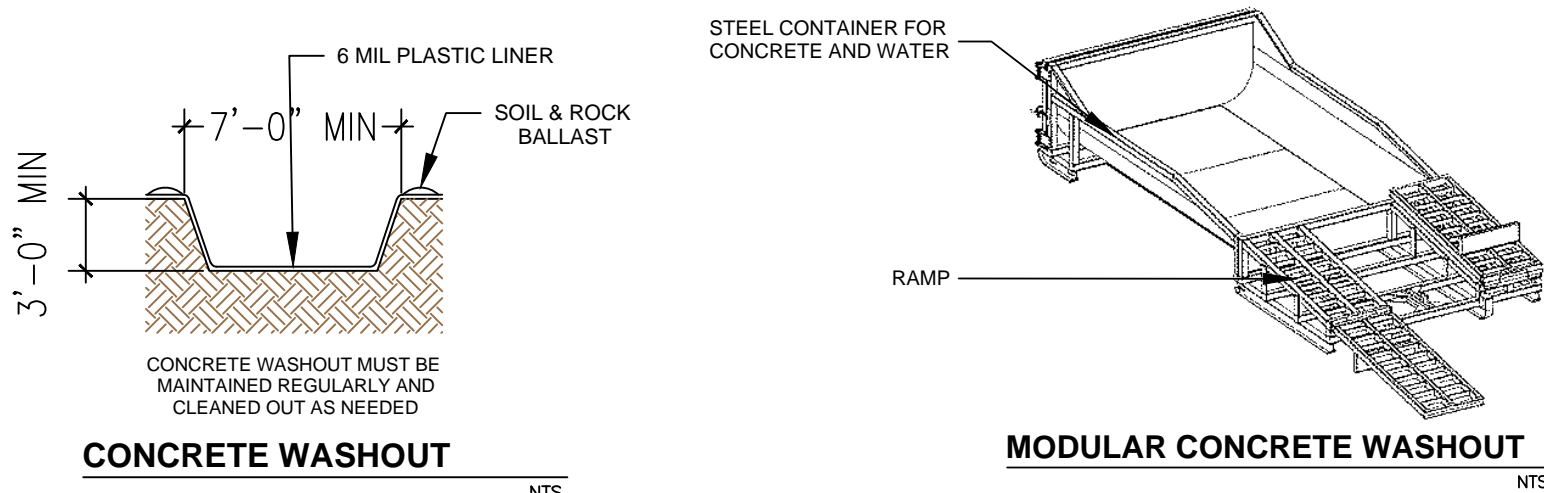
[illegible]

**GUZMAN CONSTRUCTION
SOLUTIONS, LLC
BOBBY FOSTER RD. &
UNIVERSITY BLVD. IMP., PH. I
BMP DETAILS**

DESIGNED BY:
K. FETTER, P.E.
DRAWN BY:
S. FETTER

SHEET:

4



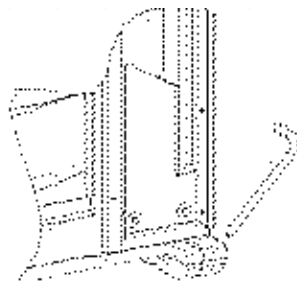
CONCRETE WASHOUT

LOCATE WASHOUT AT LEAST 50 FT FROM STORMDRAINS, OPEN DITCHES, WATER BODIES OR PROJECT PERIMETER. A SIGN SHOULD BE INSTALLED ADJACENTLY TO THE WASHOUT.

WASH OUT WASTE INTO THE WASHOUT WHERE THE CONCRETE CAN SET, BE BROKEN UP AND DISPOSED OF CORRECTLY.

DO NOT CREATE RUNOFF BY DRAINING WATER TO BERMED AREA OR BY COLLECTING THE WATER WASTE WHEN WASHING CONCRETE TO REMOVE PARTICLES AND EXPOSE THE AGGREGATE.

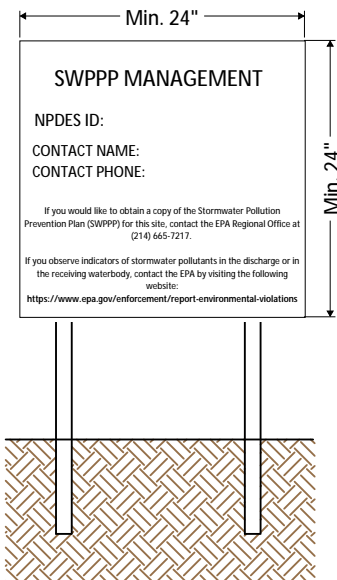
DO NOT WASH SWEEPINGS FROM EXPOSED AGGREGATE CONCRETE INTO THE STREET, STORMDRAIN SYSTEMS OR OFF THE PROJECT SITE.



PORTABLE TOILET STAKING

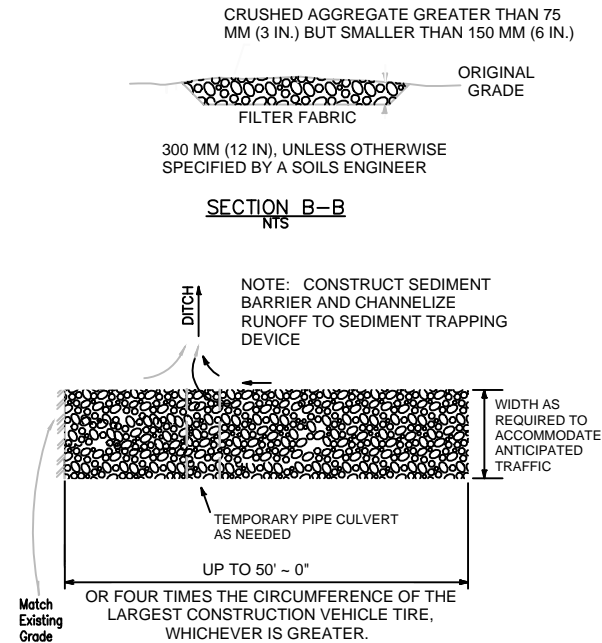
PLACE THE PORTABLE TOILET ON LEVEL GROUND. A FLAT PAVED SURFACE IS BEST IF AVAILABLE.

DRIVE THE STAKES OVER THE SKIDS OF THE PORTABLE TOILET, AROUND ALL SIDES.



NPDES Permit must be positioned at the most active part of the project where it can be viewed by the public (e.g. project entrance).

NPDES POSTING BOARD



STABILIZED CONSTRUCTION ENTRANCE

CONSTRUCT THE ENTRANCE ON A LEVEL SURFACE WHERE AN UNPAVED ROAD MEETS A PAVED ROAD. TYPICALLY AT PROJECTS ACCESS AREA.

GRADE THE ENTRANCE TOWARD THE CONSTRUCTION SITE TO PREVENT RUNOFF.

INSPECT THE ENTRANCE TO KEEP TRASH AND DEBRIS OUT OF THE WAY.

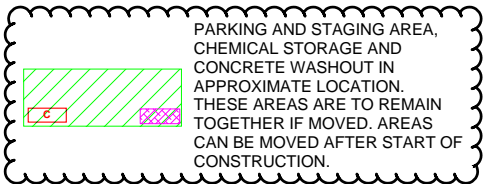
AFTER PRECIPITATION EVENTS, INSPECT THE ENTRANCE FOR ANY REPAIRS THAT MAY BE NEEDED.



SWPPP
Stormwater
Erosion Control
Reclamation
Seeding

DRAWING KEY

- POST - CONSTRUCTION FLOW
- PRE - CONSTRUCTION FLOW
- SILT FENCE
- WATTLE OR SOCK
- SPOILS PILE PROTECTION
- EARTHEN BERM
- INLET PROTECTION
- NATURAL BUFFER
- PARKING AND STAGING AREA
- CONCRETE WASHOUT
- STABILIZED CONSTRUCTION ENTRANCE
- VEGETATIVE STABILIZATION
- ENDANGERED/THREATENED SPECIES
- CHEMICAL STORAGE
- CHECK DAM
- TEMP TOILET
- LOCATION FOR PUBLIC NOTIFICATION OF NPDES
- PROJECT BOUNDARY
- DISTURBED AREA
- PROJECT AND DISTURBED BOUNDARY
- CULVERT BLANKET
- CUTBACK CURB



www.e2rc.com | 505.867.4040



DATE

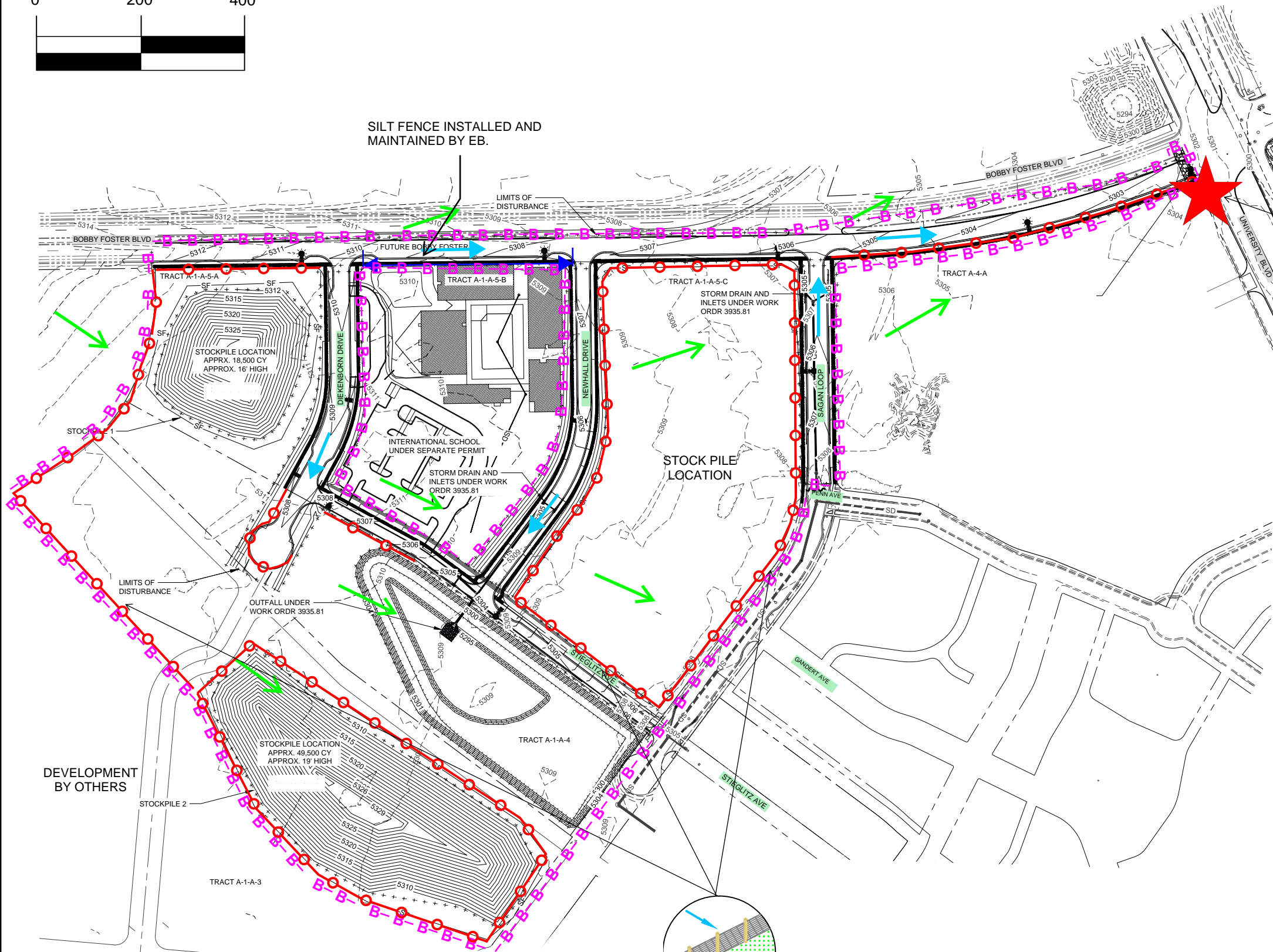
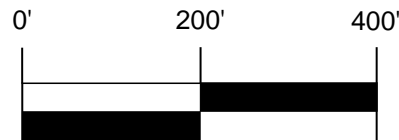
REVISION ITEM
#

GUZMAN CONSTRUCTION
SOLUTIONS, LLC
BOBBY FOSTER RD. &
UNIVERSITY BLVD. IMP., PH. I
BMP DETAILS

DESIGNED BY:
K. FETTER, P.E.
DRAWN BY:
S. FETTER

SHEET:

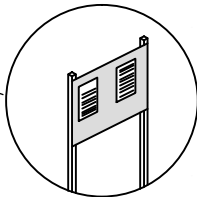
6



SEE SECTION 3.5 OF SWPPP NARRATIVE FOR SEQUENCE OF SOIL DISTURBING ACTIVITIES AND FINAL STABILIZATION.

THREE LOCATIONS ARE IDENTIFIED FOR POTENTIAL STOCKPILE LOCATION. NOT ALL MAY BE UTILIZED OVER THE COURSE OF THE PROJECT.

SILT FENCE	
IMPLEMENTATION	
BMP INSTALL	BMP REMOVE
1/15/21	
FINAL STABILIZATION	



NPDES PERMITTING

IMPLEMENTATION	
BMP INSTALL	BMP REMOVE
1/15/21	
FINAL STABILIZATION	

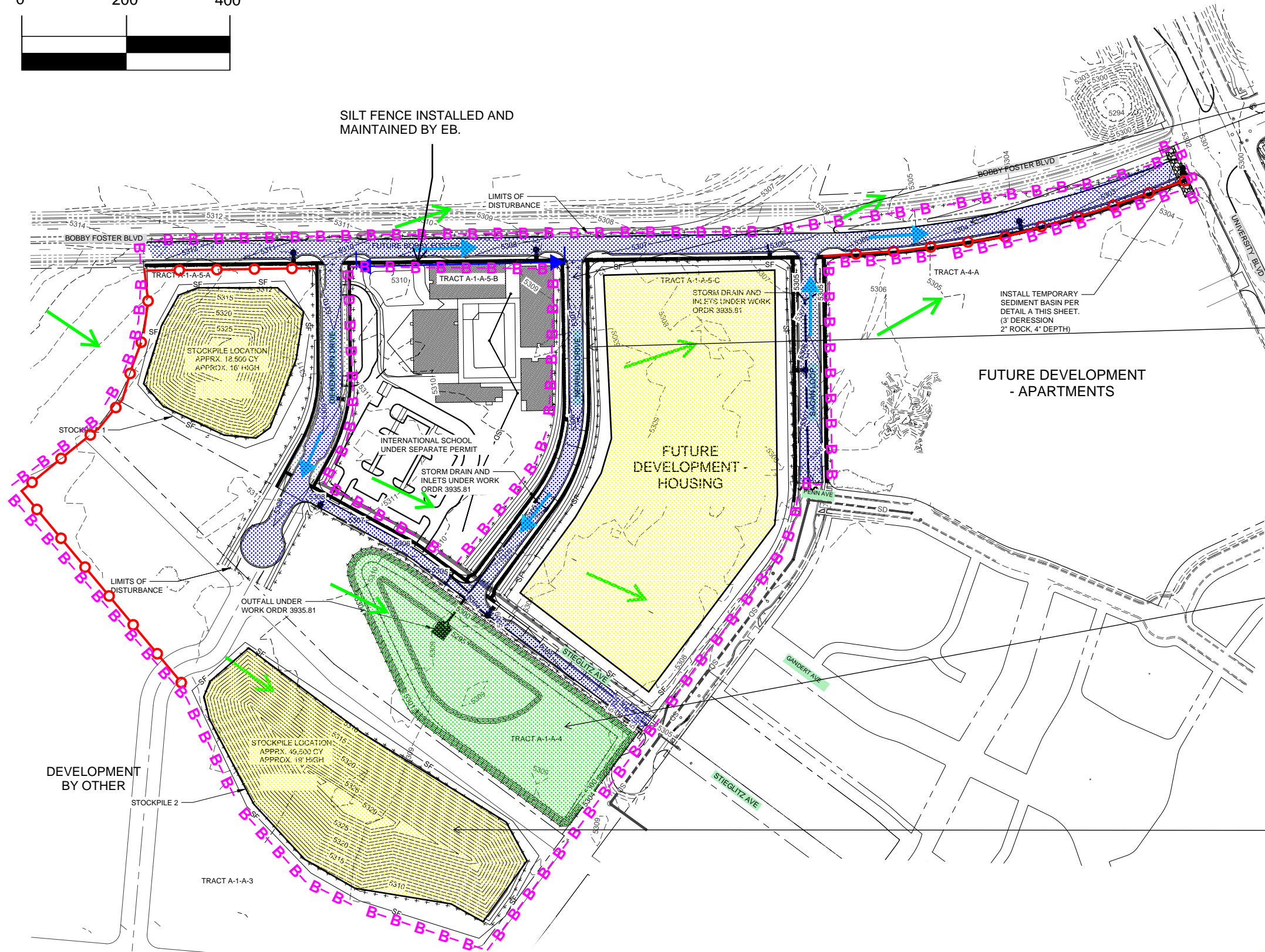
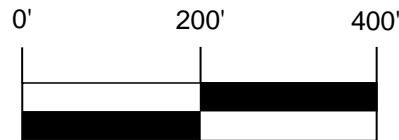


www.e2rc.com | 505.867.4040

- SWPPP
- Stormwater
- Erosion Control
- Reclamation
- Seeding



6/25/2021		Revised to address COA SWQ Comments (2/25/2021)			



ASPHALT PAVING
FINAL STABILIZATION

CONCRETE CURB, GUTTER, SIDEWALK
FINAL STABILIZATION

NM APWA 1011/1012 SEEDING
FINAL STABILIZATION

SOIL STABILIZER
FINAL STABILIZATION

FINAL STABILIZATION:
ANY STOCK PILES WHICH ARE INACTIVE FOR 14 - DAYS OR MORE WILL BE TEMPORARILY STABILIZED PER ONE OF THE METHODS OUTLINED IN SECTION 6.4 OF THE SWPPP.

THE FUTURE DEVELOPMENT AREAS WILL NOT BE DISTURBED BY THE OPERATORS. THESE AREAS WILL BE SOLD TO BUILDERS.

THE AREA BETWEEN THE SIDEWALKS AND CURB WILL BE STABILIZED WITH GRAVEL MULCH PER COA SPECIFICATION 2414 - LANDSCAPE BUFFER SWALE.

PONDS WILL BE SEEDED PER THE NM APWA 1011/1012 SEEDING SPECIFCATION, SUBSTITUTING HYDROMULCH FOR STRAW. PRE-CONSTRUCTION VEGETATIVE DENSITY IS APPROXIMATELY 40% COVERAGE.

SHOULD BARE STRIPS REMAIN NEXT TO THE ROADWAY AFTER PAVING, THE BARE STRIPS WILL BE HYDROSEEDDED WITH NATIVE SEED.



- SWPPP
- Stormwater
- Erosion Control
- Reclamation
- Seeding



DATE	REVISION ITEM	#
6/23/2021	Revised to address COA SWQ Comments (2/25/2021)	1

GUZMAN CONSTRUCTION SOLUTIONS, LLC
BOBBY FOSTER RD. & UNIVERSITY BLVD. IMP., PH. I
FINAL STABILIZATION

DESIGNED BY:
K. FETTER, P.E.
DRAWN BY:
S. FETTER

SHEET: