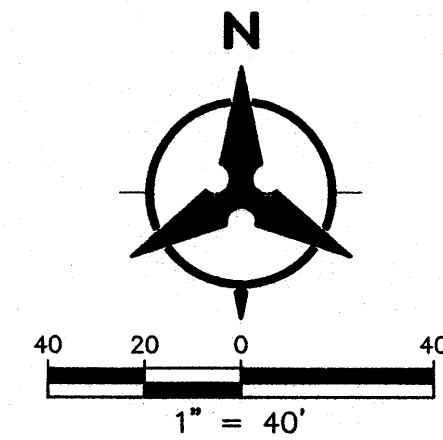


GENERAL NOTES

1. CONTRACTOR MUST OBTAIN A TOPSOIL DISTURBANCE PERMIT FROM THE ENVIRONMENTAL HEALTH DIVISION PRIOR TO CONSTRUCTION.
2. THE CONTRACTOR IS TO REFER TO EARTHWORK SPECIFICATION AS NOTED IN THE SOILS REPORT BY GEO-TEST, INC. DATED 9-29-10
3. THE CONTRACTOR SHALL CONFORM TO ALL CITY, COUNTY, STATE, AND FEDERAL DUST CONTROL MEASURES & REQUIREMENTS AND WILL BE RESPONSIBLE FOR PREPARING AND OBTAINING ALL NECESSARY APPLICATIONS AND APPROVALS.
4. THE CONTRACTOR SHALL ENSURE THAT NO SOIL ERODES FROM THE LOTS INTO PUBLIC RIGHT-OF-WAY. THIS CAN BE ACHIEVED BY CONSTRUCTING TEMPORARY BERMS AS PER DETAIL, SHEET 3B, AND WETTING THE SOIL TO KEEP IT FROM BLOWING.
5. ALL SPOT ELEVATIONS ARE TO FLOWLINE UNLESS OTHERWISE NOTED.
6. BOULDERS GREATER THAN 3 FEET IN DIAMETER EXCAVATED DURING GRADING ACTIVITIES SHALL BE STOCKPILED AND DISPOSED OF AT THE DISCRETION OF THE OWNER.
7. ALL WALLS SHOWN ARE TO BE PLACED ALONG PROPERTY LINE. WALLS ARE SHOWN OFFSET FOR VISUAL PURPOSE ONLY.
8. ALL LOTS ADJACENT TO UNIVERSITY SHALL DRAIN TO THE ALLEY AS PER GRADES SHOWN ON GRADING PLAN. ROOF DRAINAGE SHALL BE GUTTERED TO PREVENT THESE FLOWS FROM ENTERING UNIVERSITY BLVD.



LEGEND

- (91.62) FUTURE SPOT ELEVATION
- 91.62 PROPOSED SPOT ELEVATION
- × 92.46 EXISTING SPOT ELEVATION (GRID & TC)
- EXISTING CURB & GUTTER
- == PROPOSED MOUNTABLE CURB & GUTTER
- == PROPOSED STANDARD CURB & GUTTER
- 5470- EXISTING CONTOUR W/ INDEX ELEVATION
- FLOW ARROW
- PROPOSED RETAINING WALL (TO BE BUILT BY HOME BUILDER)
- PROPOSED GARDEN WALL, CONCRETE FILLED TO 1-FOOT DEPTH
- PROPOSED SLOPE
- PROPOSED STORM DRAIN
- PROPOSED STORM DRAIN MANHOLE
- PROPOSED STORM DRAIN INLET
- PROPOSED CATTLE GUARD INLET
- WALL DRAIN
- GRADING PHASE BOUNDARY

ROUGH GRADING	(±0.5')
APPROVED FOR ROUGH GRADING	DATE

Bohannon & Huston
Court yard | 7500 Jefferson St. NE Albuquerque, NM 87109-4355
ENGINEERING • SPATIAL DATA • ADVANCED TECHNOLOGIES



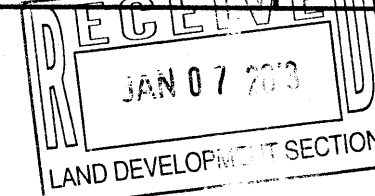
CITY OF ALBUQUERQUE
PUBLIC WORKS DEPARTMENT

MESA DEL SOL NEIGHBORHOOD MONTAGE UNIT 2

GRADING AND EROSION CONTROL PLAN

Design Review Committee	City Engineer Approval	Last Design Update	Mo./Day/Yr.	Mo./Day/Yr.

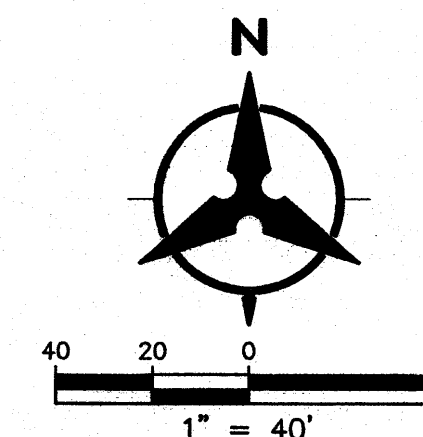
City Project No.	Zone Map No.	Sheet	Of
	R-15,16 S-16,18	3	7





GENERAL NOTES

1. CONTRACTOR MUST OBTAIN A TOPSOIL DISTURBANCE PERMIT FROM THE ENVIRONMENTAL HEALTH DIVISION PRIOR TO CONSTRUCTION.
2. THE CONTRACTOR IS TO REFER TO EARTHWORK SPECIFICATION AS NOTED IN THE SOILS REPORT BY GEO-TEST, INC. DATED 9-29-10
3. THE CONTRACTOR SHALL CONFORM TO ALL CITY, COUNTY, STATE, AND FEDERAL DUST CONTROL MEASURES & REQUIREMENTS AND WILL BE RESPONSIBLE FOR PREPARING AND OBTAINING ALL NECESSARY APPLICATIONS AND APPROVALS.
4. THE CONTRACTOR SHALL ENSURE THAT NO SOIL ERODES FROM THE LOTS INTO PUBLIC RIGHT-OF-WAY. THIS CAN BE ACHIEVED BY CONSTRUCTING TEMPORARY BERMS AS PER DETAIL, SHEET 3B, AND NETTING THE SOIL TO KEEP IT FROM BLOWING.
5. ALL SPOT ELEVATIONS ARE TO FLOWLINE UNLESS OTHERWISE NOTED.
6. BOULDERS GREATER THAN 3 FEET IN DIAMETER EXCAVATED DURING GRADING ACTIVITIES SHALL BE STOCKPILED AND DISPOSED OF AT THE DISCRETION OF THE OWNER.
7. ALL WALLS SHOWN ARE TO BE PLACED ALONG PROPERTY LINE. WALLS ARE SHOWN OFFSET FOR VISUAL PURPOSE ONLY.
8. ALL LOTS ADJACENT TO UNIVERSITY SHALL DRAIN TO THE ALLEY AS PER GRADES SHOWN ON GRADING PLAN. ROOF DRAINAGE SHALL BE GUTTERED TO PREVENT THESE FLOWS FROM ENTERING UNIVERSITY BLVD.



LEGEND

- (91.62) FUTURE SPOT ELEVATION
- 91.62 PROPOSED SPOT ELEVATION
- × 92.46 EXISTING SPOT ELEVATION (GRND & TC)
- ===== EXISTING CURB & GUTTER
- ===== PROPOSED MOUNTABLE CURB & GUTTER
- ===== PROPOSED STANDARD CURB & GUTTER
- 5470— EXISTING CONTOUR W/ INDEX ELEVATION
- FLOW ARROW
- ===== PROPOSED RETAINING WALL (TO BE BUILT BY HOME BUILDER)
- ===== PROPOSED GARDEN WALL, CONCRETE FILLED TO 1-FOOT DEPTH
- ===== PROPOSED SLOPE
- ===== PROPOSED STORM DRAIN
- PROPOSED STORM DRAIN MANHOLE
- PROPOSED STORM DRAIN INLET
- PROPOSED CATTLE GUARD INLET
- WALL DRAIN
- GRADING PHASE BOUNDARY

ROUGH GRADING (±0.5')
APPROVED FOR ROUGH GRADING DATE

Bohannon & Huston

Courtyard | 7500 Jefferson St. NE Albuquerque, NM 87109-4335
ENGINEERING • SPATIAL DATA • ADVANCED TECHNOLOGIES



**CITY OF ALBUQUERQUE
PUBLIC WORKS DEPARTMENT**

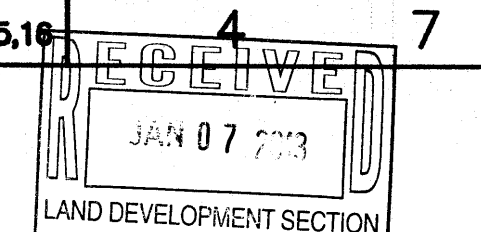
MESA DEL SOL NEIGHBORHOOD MONTAGE UNIT 2

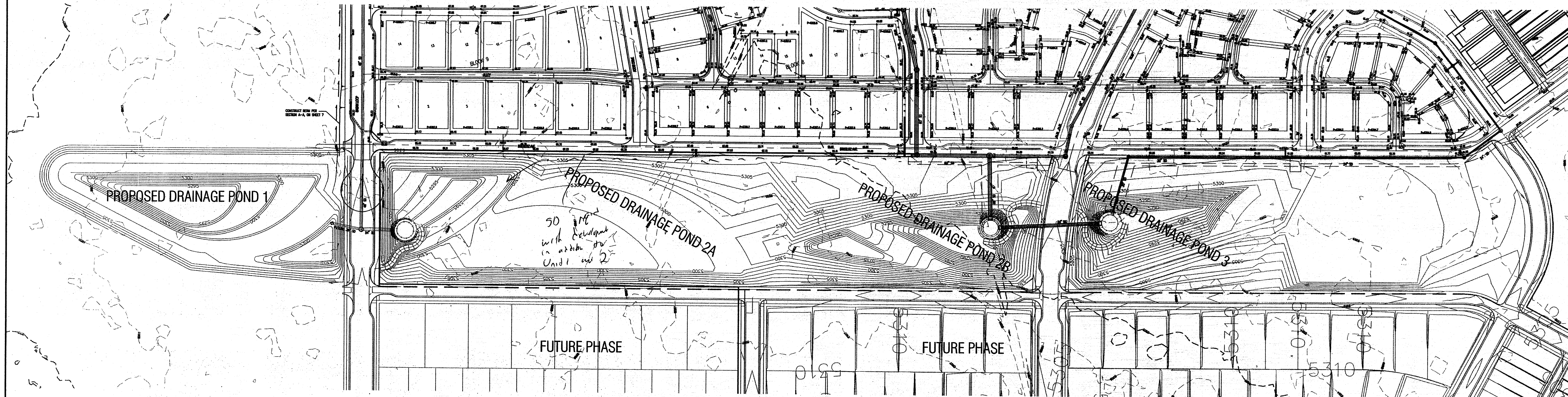
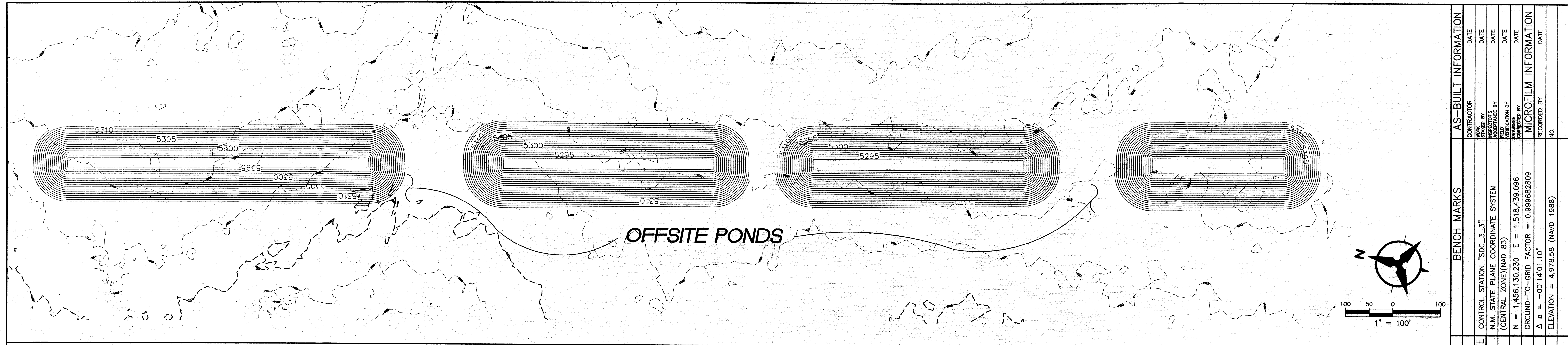
GRADING AND EROSION CONTROL PLAN

Design Review Committee	City Engineer Approval	Mo./Day/Yr.	Mo./Day/Yr.

City Project No. Zone Map No. Sheet Of

R-15,16 S-15,16 4 7

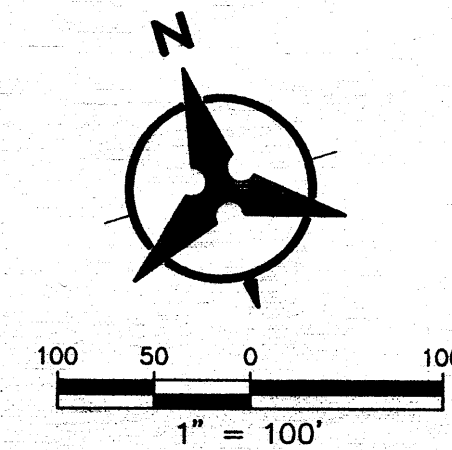




LEGEND

- (91.62) FUTURE SPOT ELEVATION
- 91.62 PROPOSED SPOT ELEVATION
- × 92.46 EXISTING SPOT ELEVATION (GRID & TC)
- EXISTING CURB & GUTTER
- PROPOSED MOUNTABLE CURB & GUTTER
- PROPOSED STANDARD CURB & GUTTER
- 5470 EXISTING CONTOUR W/ INDEX ELEVATION
- FLOW ARROW
- PROPOSED RETAINING WALL (TO BE BUILT BY HOME BUILDER)
- PROPOSED GARDEN WALL, CONCRETE FILLED TO 1-FOOT DEPTH
- PROPOSED SLOPE
- PROPOSED STORM DRAIN
- PROPOSED STORM DRAIN MANHOLE
- PROPOSED STORM DRAIN INLET
- PROPOSED CATTLE GUARD INLET
- WALL DRAIN

1. CONTRACTOR MUST OBTAIN A TOPSOIL DISTURBANCE PERMIT FROM THE ENVIRONMENTAL HEALTH DIVISION PRIOR TO CONSTRUCTION.
2. THE CONTRACTOR IS TO REFER TO EARTHWORK SPECIFICATION AS NOTED IN THE SOILS REPORT.
3. THE CONTRACTOR SHALL CONFORM TO ALL CITY, COUNTY, STATE, AND FEDERAL DUST CONTROL MEASURES & REQUIREMENTS AND WILL BE RESPONSIBLE FOR PREPARING AND OBTAINING ALL NECESSARY APPLICATIONS AND APPROVALS.
4. THE CONTRACTOR SHALL ENSURE THAT NO SOIL ERODES FROM THE LOTS INTO PUBLIC RIGHT-OF-WAY. THIS CAN BE ACHIEVED BY CONSTRUCTING TEMPORARY BERMS AS PER DETAIL, SHEET 3B, AND WETTING THE SOIL TO KEEP IT FROM BLOWING.
5. ALL SPOT ELEVATIONS ARE TO FLOWLINE UNLESS OTHERWISE NOTED.
6. BOULDERS GREATER THAN 3 FEET IN DIAMETER EXCAVATED DURING GRADING ACTIVITIES SHALL BE STOCKPILED AND DISPOSED OF AT THE DISCRETION OF THE OWNER.
7. ALL WALLS SHOWN ARE TO BE PLACED ALONG PROPERTY LINE. WALLS ARE SHOWN OFFSET FOR VISUAL PURPOSE ONLY.



ROUGH GRADING

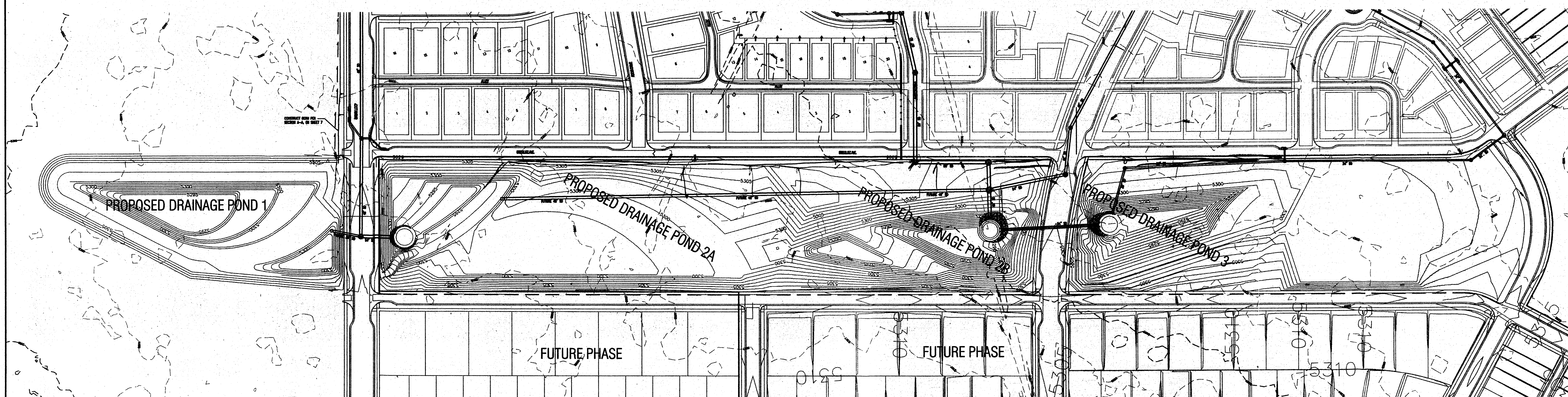
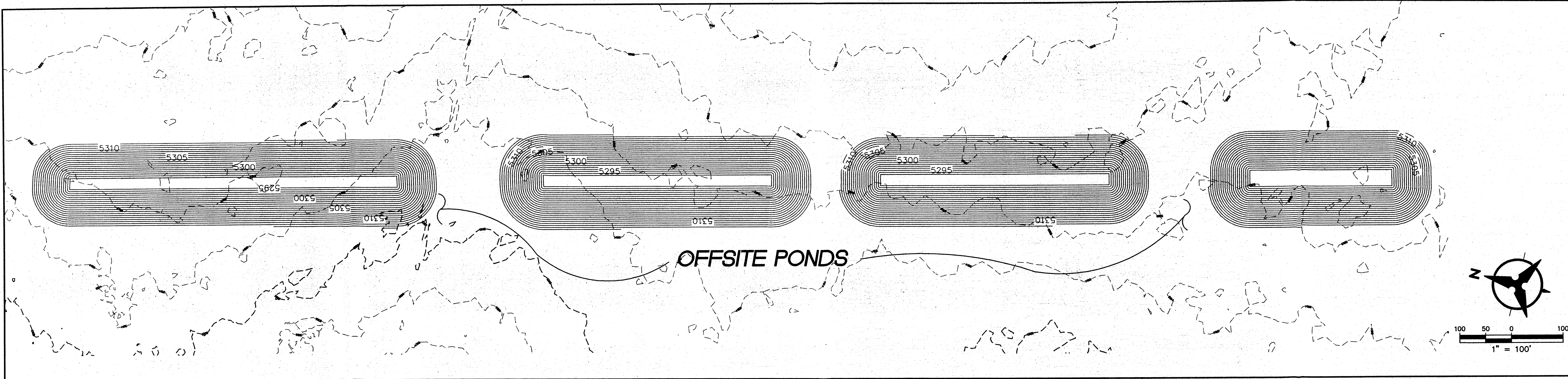
APPROVED FOR ROUGH GRADING DATE

ENGINEER'S SEAL		SURVEY INFORMATION		BENCH MARKS		AS-BUILT INFORMATION	
<div><p>1-2-13</p></div>		FIELD NOTES					
		NO.	BY	DATE	CONTROL STATION "SDC-3.3"	CONTRACTOR	DATE
					N.M. STATE PLANE COORDINATE SYSTEM	WORK STAGED BY	DATE
					(CENTRAL ZONE)(NAD 83)	ACCEPTANCE BY	DATE
					FIELD OPTION BY	DATE	
					TRAINING	DATE	
					CORRECTED BY		
					GROUND-TO-GRID FACTOR = 0.9998682809	MICROFILM INFORMATION	
					$\Delta \alpha = -00^{\circ}14'01.10''$	RECORDED BY	
					ELEVATION = 4,978.58 (NAVD 1988)	DATE	
						NO.	

																																																																																																																																																																																																																																																																																																																																																																																																																																																																																																																																																																																																																																																																																																																																																																																																																																																																																																																																																																																																																																																																																																																																																																																																																																																																																																																																																																																			</
--	--	--	--	--	--	--	--	--	--	--	--	--	--	--	--	--	--	--	--	--	--	--	--	--	--	--	--	--	--	--	--	--	--	--	--	--	--	--	--	--	--	--	--	--	--	--	--	--	--	--	--	--	--	--	--	--	--	--	--	--	--	--	--	--	--	--	--	--	--	--	--	--	--	--	--	--	--	--	--	--	--	--	--	--	--	--	--	--	--	--	--	--	--	--	--	--	--	--	--	--	--	--	--	--	--	--	--	--	--	--	--	--	--	--	--	--	--	--	--	--	--	--	--	--	--	--	--	--	--	--	--	--	--	--	--	--	--	--	--	--	--	--	--	--	--	--	--	--	--	--	--	--	--	--	--	--	--	--	--	--	--	--	--	--	--	--	--	--	--	--	--	--	--	--	--	--	--	--	--	--	--	--	--	--	--	--	--	--	--	--	--	--	--	--	--	--	--	--	--	--	--	--	--	--	--	--	--	--	--	--	--	--	--	--	--	--	--	--	--	--	--	--	--	--	--	--	--	--	--	--	--	--	--	--	--	--	--	--	--	--	--	--	--	--	--	--	--	--	--	--	--	--	--	--	--	--	--	--	--	--	--	--	--	--	--	--	--	--	--	--	--	--	--	--	--	--	--	--	--	--	--	--	--	--	--	--	--	--	--	--	--	--	--	--	--	--	--	--	--	--	--	--	--	--	--	--	--	--	--	--	--	--	--	--	--	--	--	--	--	--	--	--	--	--	--	--	--	--	--	--	--	--	--	--	--	--	--	--	--	--	--	--	--	--	--	--	--	--	--	--	--	--	--	--	--	--	--	--	--	--	--	--	--	--	--	--	--	--	--	--	--	--	--	--	--	--	--	--	--	--	--	--	--	--	--	--	--	--	--	--	--	--	--	--	--	--	--	--	--	--	--	--	--	--	--	--	--	--	--	--	--	--	--	--	--	--	--	--	--	--	--	--	--	--	--	--	--	--	--	--	--	--	--	--	--	--	--	--	--	--	--	--	--	--	--	--	--	--	--	--	--	--	--	--	--	--	--	--	--	--	--	--	--	--	--	--	--	--	--	--	--	--	--	--	--	--	--	--	--	--	--	--	--	--	--	--	--	--	--	--	--	--	--	--	--	--	--	--	--	--	--	--	--	--	--	--	--	--	--	--	--	--	--	--	--	--	--	--	--	--	--	--	--	--	--	--	--	--	--	--	--	--	--	--	--	--	--	--	--	--	--	--	--	--	--	--	--	--	--	--	--	--	--	--	--	--	--	--	--	--	--	--	--	--	--	--	--	--	--	--	--	--	--	--	--	--	--	--	--	--	--	--	--	--	--	--	--	--	--	--	--	--	--	--	--	--	--	--	--	--	--	--	--	--	--	--	--	--	--	--	--	--	--	--	--	--	--	--	--	--	--	--	--	--	--	--	--	--	--	--	--	--	--	--	--	--	--	--	--	--	--	--	--	--	--	--	--	--	--	--	--	--	--	--	--	--	--	--	--	--	--	--	--	--	--	--	--	--	--	--	--	--	--	--	--	--	--	--	--	--	--	--	--	--	--	--	--	--	--	--	--	--	--	--	--	--	--	--	--	--	--	--	--	--	--	--	--	--	--	--	--	--	--	--	--	--	--	--	--	--	--	--	--	--	--	--	--	--	--	--	--	--	--	--	--	--	--	--	--	--	--	--	--	--	--	--	--	--	--	--	--	--	--	--	--	--	--	--	--	--	--	--	--	--	--	--	--	--	--	--	--	--	--	--	--	--	--	--	--	--	--	--	--	--	--	--	--	--	--	--	--	--	--	--	--	--	--	--	--	--	--	--	--	--	--	--	--	--	--	--	--	--	--	--	--	--	--	--	--	--	--	--	--	--	--	--	--	--	--	--	--	--	--	--	--	--	--	--	--	--	--	--	--	--	--	--	--	--	--	--	--	--	--	--	--	--	--	--	--	--	--	--	--	--	--	--	--	--	--	--	--	--	--	--	--	--	--	--	--	--	--	--	--	--	--	--	--	--	--	--	--	--	--	--	--	--	--	--	--	--	--	--	--	--	--	--	--	--	--	--	--	--	--	--	--	--	--	--	--	--	--	--	--	--	--	--	--	--	--	--	--	--	--	--	--	--	--	--	--	--	--	--	--	--	--	--	--	--	--	--	--	--	--	--	--	--	--	--	--	--	--	--	--	--	--	--	--	--	--	--	--	--	--	--	--	--	--	--	--	--	--	--	--	--	--	--	--	--	--	--	--	--	--	--	--	--	--	--	--	--	--	--	--	--	--	--	--	--	--	--	--	--	--	--	--	--	--	--	--	--	--	--	--	--	--	--	--	--	--	--	--	--	--	--	--	--	--	--	--	--	--	--	--	--	--	--	--	--	--	--	--	--	--	--	--	--	--	--	--	--	--	--	--	--	--	--	--	--	--	--	--	--	--	--	--	--	--	--	--	--	--	--	--	--	--	--	--	--	--	--	--	--	--	--	--	--	--	--	--	--	--	--	--	--	--	--	--	--	--	--	--	--	--	--	--	--	--	--	--	--	--	--	--	--	--	--	--	--	--	--	--	--	--	--	--	--	--	--	--	--	--	--	--	--	--	--	--	--	--	--	--	--	--	--	--	--	--	--	--	--	--	--	--	--	--	--	--	--	--	--	--	--	--	--	--	--	--	--	--	--	--	--	--	--	--	--	--	--	--	--	--	--	--	--	--	--	--	--	--	--	--	--	--	--	--	--	--	--	--	--	--	--	--	--	--	--	--	--	--	--	--	--	--	--	--	--	--	--	--	--	--	--	--	--	--	--	--	--	--	--	--	--	--	--	--	--	--	--	--	--	--	--	--	--	--	--	--	--	--	--	--	--	--	--	--	--	--	--	--	--	--	--	--	--	--	--	--	--	--	--	--	--	--	--	--	--	--	--	--	--	--	--	--	--	--	--	--	--	--	--	--	--	--	--	--	--	--	--	--	--	--	--	--	--	--	--	--	--	--	--	--	--	--	--	--	--	--	--	--	--	----

CITY OF ALBUQUERQUE PUBLIC WORKS DEPARTMENT			
MESA DEL SOL NEIGHBORHOOD MONTAGE UNIT 2			
GRADING AND EROSION CONTROL PLAN			
Design Review Committee	City Engineer Approval	Mo./Day/Yr.	Mo./Day/Yr.
City Project No.	Zone Map No.	Sheet	Of
	R-15,16 S-15,16	6	7

RECEIVED
JAN - 2 2013

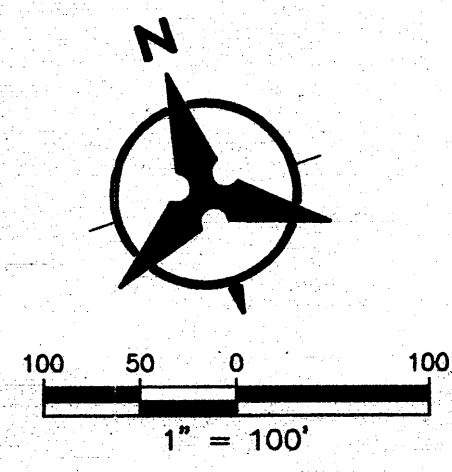


LEGEND

	FUTURE SPOT ELEVATION
	PROPOSED SPOT ELEVATION
	EXISTING SPOT ELEVATION (GRND & TC)
	EXISTING CURB & GUTTER
	PROPOSED MOUNTABLE CURB & GUTTER
	PROPOSED STANDARD CURB & GUTTER
	EXISTING CONTOUR W/ INDEX ELEVATION
	FLOW ARROW
	PROPOSED RETAINING WALL (TO BE BUILT BY HOME BUILDER)
	PROPOSED GARDEN WALL, CONCRETE FILLED TO 1-FOOT DEPTH
	PROPOSED SLOPE
	PROPOSED STORM DRAIN
	PROPOSED STORM DRAIN MANHOLE
	PROPOSED STORM DRAIN INLET
	PROPOSED CATTLE GUARD INLET
	WALL DRAIN

1. CONTRACTOR MUST OBTAIN A TOPSOIL DISTURBANCE PERMIT FROM THE ENVIRONMENTAL HEALTH DIVISION PRIOR TO CONSTRUCTION.
2. THE CONTRACTOR IS TO REFER TO EARTHWORK SPECIFICATION AS NOTED IN THE SOILS REPORT.
3. THE CONTRACTOR SHALL CONFORM TO ALL CITY, COUNTY, STATE, AND FEDERAL DUST CONTROL MEASURES & REQUIREMENTS AND WILL BE RESPONSIBLE FOR PREPARING AND OBTAINING ALL NECESSARY APPLICATIONS AND APPROVALS.
4. THE CONTRACTOR SHALL ENSURE THAT NO SOIL ERODES FROM THE LOTS INTO PUBLIC RIGHT-OF-WAY. THIS CAN BE ACHIEVED BY CONSTRUCTING TEMPORARY BERMS AS PER DETAIL, SHEET 3B, AND WETTING THE SOIL TO KEEP IT FROM BLOWING.
5. ALL SPOT ELEVATIONS ARE TO FLOWLINE UNLESS OTHERWISE NOTED.
6. BOULDERS GREATER THAN 3 FEET IN DIAMETER EXCAVATED DURING GRADING ACTIVITIES SHALL BE STOCKPILED AND DISPOSED OF AT THE DISCRETION OF THE OWNER.
7. ALL WALLS SHOWN ARE TO BE PLACED ALONG PROPERTY LINE. WALLS ARE SHOWN OFFSET FOR VISUAL PURPOSE ONLY.

P:\20110146\CDP\Plans\General\20110146_GPO1_UNIT2.dwg
February 15, 2011 - 11:44am



ROUGH GRADING

APPROVED FOR ROUGH GRADING DATE

AS-BUILT INFORMATION		BENCH MARKS		SURVEY INFORMATION		ENGINEER'S SEAL	
CONTRACTOR	DATE	ACS BRASS TABLE STAMPED "1-R16, 1984"	DATE	NO.	BY		REMARKS REVISIONS DESIGN
STAMPED BY	DATE	GEOGRAPHIC POSITION (NAD 83)	DATE				
ACCEPTANCE BY	DATE	N.M. STATE PLANE COORDINATES (CENTRAL ZONE)	DATE				
REVISIONS	DATE	N.M. STATE PLANE COORDINATES (CENTRAL ZONE)	DATE				
MICROFILM INFORMATION		GROUND-TO-GRID FACTOR = 0.999664099		DESIGNED BY: CJS		DATE: 12/20/10	
RECORDED BY		ΔA = -00'12"22.46"		DRAWN BY: ARR		DATE: 12/20/10	
NO.		NAVD 1988 ELEVATION = 5291.451		CHECKED BY: CJS		DATE: 12/20/10	

CITY OF ALBUQUERQUE
PUBLIC WORKS DEPARTMENT

MESA DEL SOL NEIGHBORHOOD MONTAGE UNIT 2

GRADING AND EROSION CONTROL PLAN

Design Review Committee	City Engineer Approval	Mo./Day/Yr.	Mo./Day/Yr.

City Project No. _____ Zone Map No. **R-15,16** Sheet **6** Of **7**