

CITY OF ALBUQUERQUE

Planning Department
David Campbell, Director



Mayor Timothy M. Keller

June 20, 2019

Mike Balaskovits, PE
Bohannon Huston, Inc.
7500 Jefferson St NE
Albuquerque, NM 87109

RE: Mesa Del Sol Montage Unit 3B
Revised Grading Plan Stamp Date: 6/6/19 (Sheets 1 & 5)
Grading Plan Stamp Date: 2/15/19
Drainage Report Stamp Date: 1/18/19
Hydrology File: R16D006

Dear Mr. Balaskovits:

PO Box 1293

Based on the submittal received on 6/7/19 the above-referenced Grading Plan and Drainage Report are re-approved for Preliminary Plat, Grading Permit & Work Order.

Albuquerque

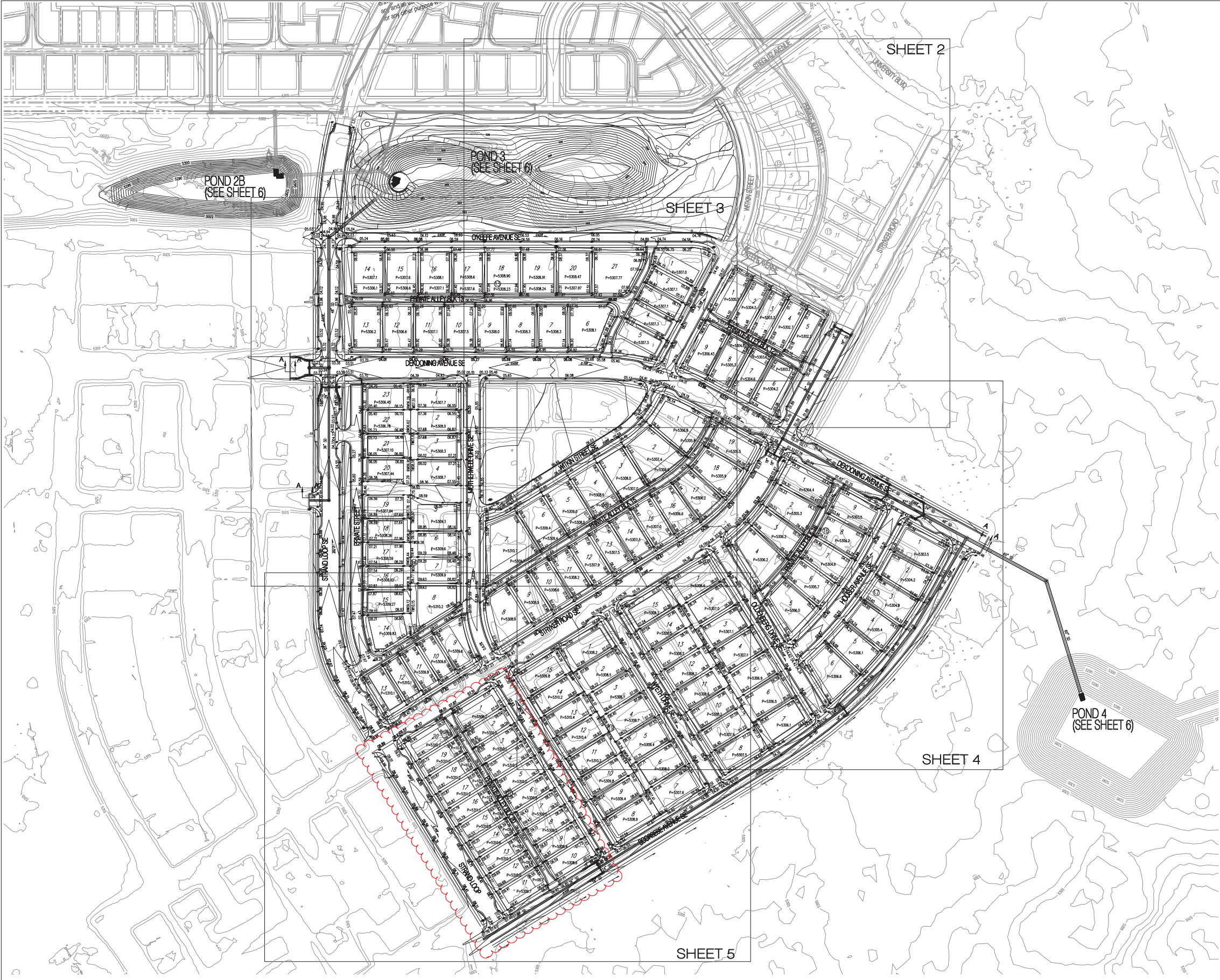
If you have any questions, please contact me at 924-3695 or dpeterson@cabq.gov.

NM 87103

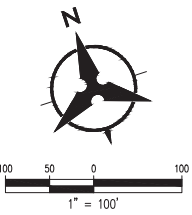
Sincerely,

www.cabq.gov

Dana M. Peterson
Senior Engineer, Planning Dept.
Development Review Services



- GENERAL NOTES**
1. CONTRACTOR MUST OBTAIN A TOPSOIL DISTURBANCE PERMIT FROM THE ENVIRONMENTAL HEALTH DIVISION PRIOR TO CONSTRUCTION.
 2. THE CONTRACTOR IS TO REFER TO EARTHWORK SPECIFICATION AS NOTED IN THE SOILS REPORT BY GEO-TEST, INC. DATED 9-29-10
 3. THE CONTRACTOR SHALL CONFORM TO ALL CITY, COUNTY, STATE, AND FEDERAL DUST CONTROL MEASURES & REQUIREMENTS AND WILL BE RESPONSIBLE FOR PREPARING AND OBTAINING ALL NECESSARY APPLICATIONS AND APPROVALS.
 4. THE CONTRACTOR SHALL ENSURE THAT NO SOIL ERODES FROM THE LOTS INTO PUBLIC RIGHT-OF-WAY. THIS CAN BE ACHIEVED BY CONSTRUCTING TEMPORARY BERMS AS PER DETAIL, SHEET 3B, AND WETTING THE SOIL TO KEEP IT FROM BLOWING.
 5. ALL SPOT ELEVATIONS ARE TO FLOWLINE UNLESS OTHERWISE NOTED.
 6. BOULDERS GREATER THAN 3 FEET IN DIAMETER EXCAVATED DURING GRADING ACTIVITIES SHALL BE STOCKPILED AND DISPOSED OF AT THE DISCRETION OF THE OWNER.
 7. ALL WALLS SHOWN ARE TO BE PLACED ALONG PROPERTY LINE. WALLS ARE SHOWN OFFSET FOR VISUAL PURPOSE ONLY.
 8. ALL LOTS ADJACENT TO UNIVERSITY SHALL DRAIN TO THE ALLEY AS PER GRADES SHOWN ON GRADING PLAN. ROOF DRAINAGE SHALL BE GUTTERED TO PREVENT THESE FLOWS FROM ENTERING UNIVERSITY BLVD.



- LEGEND**
- (91.62) FUTURE SPOT ELEVATION
 - 91.62 PROPOSED SPOT ELEVATION
 - × 92.46 EXISTING SPOT ELEVATION (GRND & TC)
 - ===== EXISTING CURB & GUTTER
 - ===== PROPOSED MOUNTABLE CURB & GUTTER
 - ===== PROPOSED STANDARD CURB & GUTTER
 - 5470 — EXISTING CONTOUR W/ INDEX ELEVATION
 - FLOW ARROW
 - ===== PROPOSED RETAINING WALL (TO BE BUILT BY HOME BUILDER)
 - ===== PROPOSED GARDEN WALL, CONCRETE FILLED TO 1-FOOT DEPTH
 - ===== PROPOSED SLOPE
 - PROPOSED STORM DRAIN
 - PROPOSED STORM DRAIN MANHOLE
 - PROPOSED STORM DRAIN INLET
 - PROPOSED CATTLE GUARD INLET
 - WALL DRAIN
 - GRADING PHASE BOUNDARY

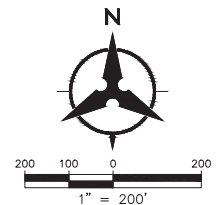
Bohannon & Huston
www.bhinc.com 800.877.5332

		CITY OF ALBUQUERQUE PUBLIC WORKS DEPARTMENT	
MESA DEL SOL MONTAGE UNIT 3B GRADING AND DRAINAGE PLAN OVERALL			
Design Review Committee	City Engineer Approval	Last Design Update	
		Mo./Day/Yr.	Mo./Day/Yr.
City Project No.	Zone Map No.	Sheet	Of
775782	R-15,16 S-15,16	1	7

UPDATED BASIN SUMMARY TABLE TO ACCOUNT FOR THE ADDITION OF 5 LOTS TO MONTAGE UNIT 3B

BASIN I.D.	AREA (AC)	REV UNITS	ORIGINAL UNITS	% LAND TREATMENT					10 YR	DISCHARGE (CFS)	STORMWATER VOLUME		
				A	B	C	REV-D	ORIG-D			100YR	100 YR 6HR	100 YR 10-DAY
Basin A-1	5.8	32	32	0.0%	23.0%	24.0%	53.0%	53.0%	13.29	21.83	21.83	0.76	1.17
Basin A-2	4.7	21	21	0.0%	27.0%	27.0%	46.0%	46.0%	10.16	17.01	17.01	0.58	0.87
Basin A-3	4.4	17	17	0.0%	29.5%	29.5%	41.0%	41.0%	9.11	15.49	15.49	0.53	0.77
Basin A-4	5.2	24	24	0.0%	26.5%	26.5%	47.0%	47.0%	11.36	19.92	19.92	0.65	0.98
Basin A-5	4.4	15	15	0.0%	30.4%	30.4%	39.2%	38.0%	8.97	15.33	15.22	0.52	0.75
Basin B-1	9.3	32	47	0.0%	23.1%	23.1%	53.0%	47.0%	21.43	35.13	33.35	1.23	1.90
Basin B-2	2.2	4	4	0.0%	35.0%	40.0%	25.0%	25.0%	3.96	7.09	7.09	0.23	0.30
Basin B-3	4.5	26	27	0.0%	22.4%	22.4%	55.2%	57.0%	10.47	17.27	17.27	0.60	0.93
Basin B-4	4.6	23	24	0.0%	25.3%	25.3%	49.5%	51.0%	10.23	16.97	17.11	0.59	0.89
Basin B-5	6.6	28	29	0.0%	28.1%	28.1%	43.8%	45.0%	14.00	23.60	23.76	0.81	1.19
Basin B-6	3.7	10	9	0.0%	34.1%	34.1%	31.9%	30.0%	7.05	12.35	12.21	0.41	0.57
Basin B-7	2.9	11	10	0.0%	29.8%	29.8%	40.4%	38.0%	5.97	10.17	10.03	0.34	0.50
Basin C	0.8	3	3	0.0%	35.0%	40.0%	25.0%	25.0%	1.64	3.06	3.06	0.09	0.14
Basin M	2.2	4	4	0.0%	35.0%	40.0%	25.0%	25.0%	3.96	7.09	7.09	0.23	0.30
Future Basin 1	8.8	n/a	n/a	0.0%	24.5%	24.5%	51.0%	51.0%	19.81	32.73	32.73	1.14	1.73
Future Basin 2	7.7	n/a	n/a	0.0%	24.5%	24.5%	51.0%	51.0%	17.34	28.64	28.64	0.99	1.52
Future Basin 3	10.3	n/a	n/a	0.0%	24.5%	24.5%	51.0%	51.0%	23.19	38.31	38.31	1.33	2.03
Future Basin 4	13.1	n/a	n/a	0.0%	24.5%	24.5%	51.0%	51.0%	29.50	48.72	48.72	1.69	2.58
Future Basin 5	61.1	n/a	n/a	0.0%	24.5%	24.5%	51.0%	51.0%	137.57	227.24	227.24	7.89	12.04
Future Basin 6	36.6	n/a	n/a	0.0%	12.4%	12.5%	75.0%	75.0%	98.29	153.64	153.64	5.58	9.24
TOTAL	282.1	286	281	5 < Lot difference					164.25	784.72	769.52	26.68	41.00
Montage 3B									130.7	131CFS	129.5	6.72	6.58
Difference									1.2			0.14	
Percentage Difference									0.93%			2.12%	

MESA DEL SOL NEIGHBORHOOD MONTAGE UNITS 3 & 4 DEVELOPED CONDITIONS UPDATED BASIN MAP 10/2018



LEGEND	
	PROPOSED BASIN BOUNDARY
	EXISTING BASIN BOUNDARY
	BASIN FLOW DIRECTION

PREVIOUS BASIN SUMMARY TABLE FROM 2014

BASIN I.D.	AREA (AC)	DISCHARGE (CFS)	STORMWATER VOLUME	
			100 YR 6HR	100 YR 10-DAY
Basin A-1	5.8	21.83	0.76	1.17
Basin A-2	4.7	17.01	0.58	0.87
Basin A-3	4.4	15.49	0.53	0.77
Basin A-4	5.2	19.92	0.65	0.98
Basin A-5	4.4	15.22	0.51	0.74
Basin A-6	3.2	10.75	0.36	0.50
Basin B-1	9.3	33.85	1.16	1.75
Basin B-2	2.2	7.96	0.27	0.41
Basin B-3	4.5	17.27	0.61	0.95
Basin B-4	4.6	17.11	0.59	0.91
Basin B-5	6.6	23.76	0.81	1.21
Basin B-6	3.7	12.21	0.40	0.55
Basin B-7	2.9	10.03	0.34	0.48
Basin C	0.8	2.80	0.09	0.14
Basin M	2.2	7.09	0.23	0.30
Future Basin 1	8.8	32.73	1.14	1.73
Future Basin 2	7.7	28.64	0.99	1.52
Future Basin 3	10.3	38.31	1.33	2.03
Future Basin 4	13.1	48.72	1.69	2.58
Future Basin 5	61.1	227.24	7.89	12.04
Future Basin 6	36.6	153.64	5.58	9.24

POND SUMMARY - FULLY DEVELOPED CONDITIONS			
POND	MAX WSE	REQ'D STORAGE VOLUME (AC-FT)	MAX DEPTH (FT)
1 (Future)	*	12.04	*
2A	5300.0	3.98	5.5
2B	5300.0	7.82	11.0
3	5300.0	8.54	11.0
4	5297.0*	19.04	14*

* Denotes pond to be designed in future

POND SUMMARY - REQUIRED VOLUMES FOR UNITS 3 AND 4				
POND	MAX WSE	REQ'D STORAGE VOLUME (AC-FT)	MAX DEPTH (FT)	MAX AVAILABLE VOLUME (AC-FT)
1 (Future)	NOT NEEDED	0.00	N/A	N/A
2A	5300.0	3.98	N/A	4.1
2B	5300.0	7.82	11.0	10.1
3	5300.0	8.54	11.0	10.1
4	5291.0	6.26	8.0	10.2

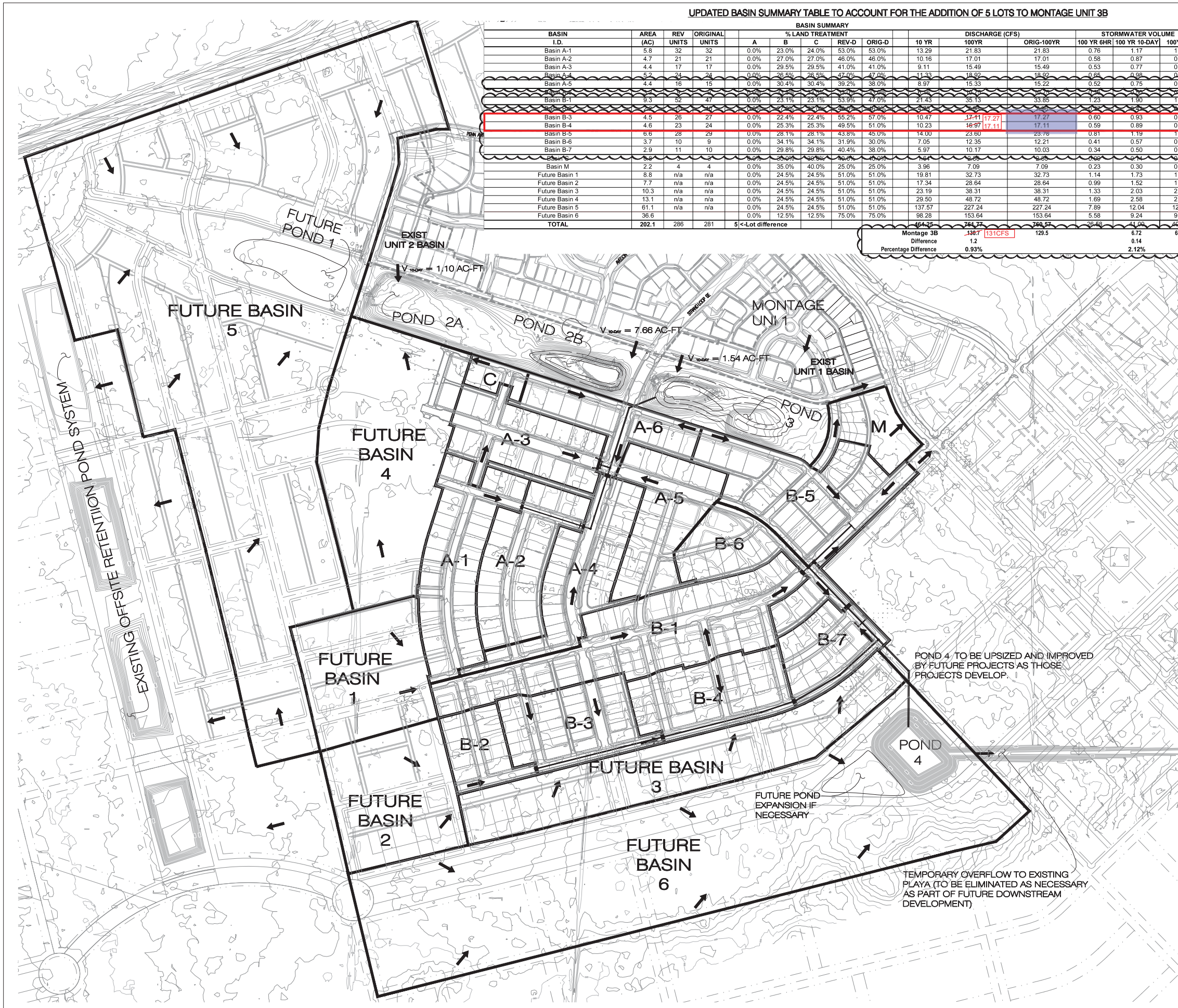
NOTES:

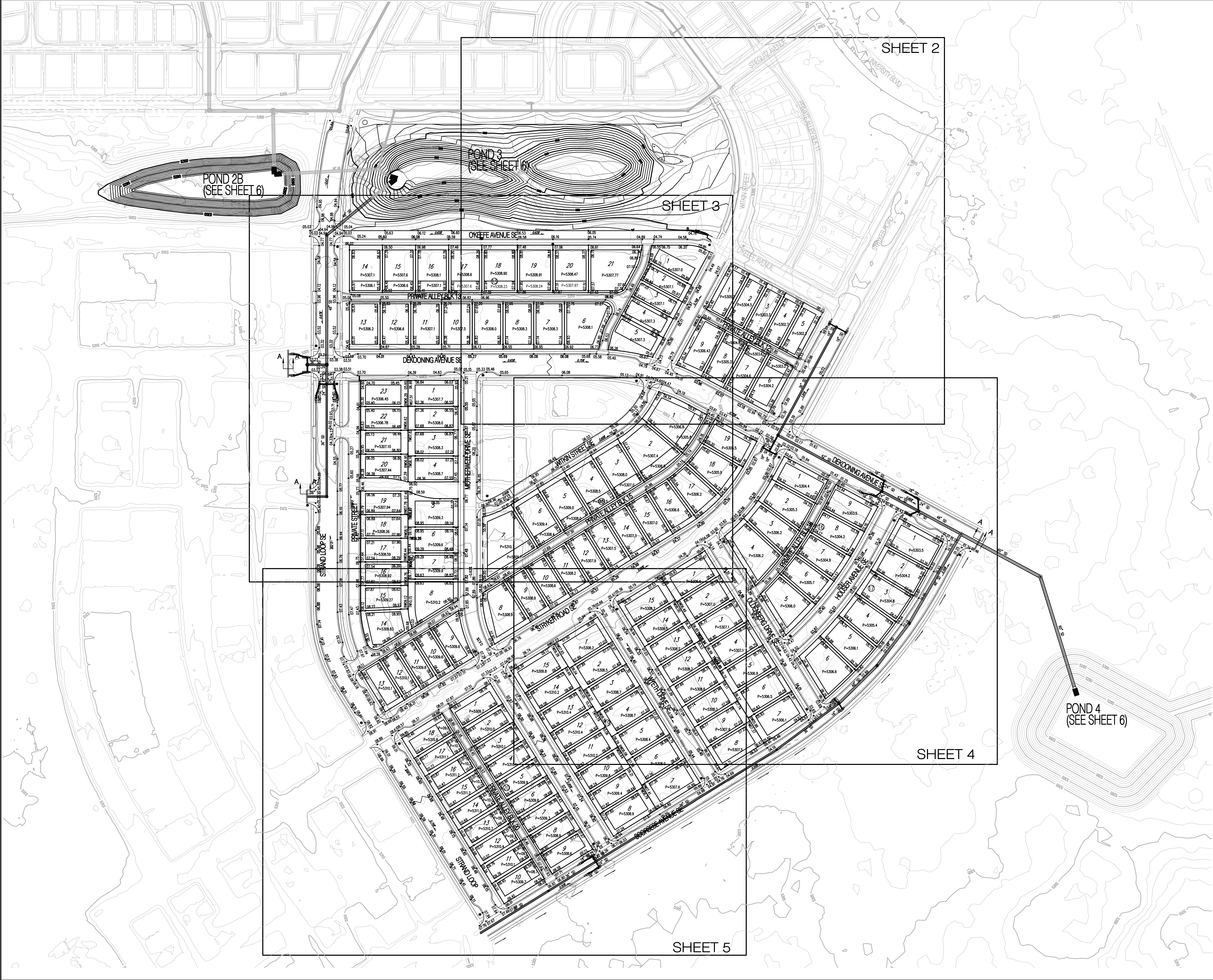
- EXISTING POND 2A HAS ALREADY BEEN CONSTRUCTED AND CERTIFIED TO THE ABOVE VOLUME.
- EXISTING POND 4 HAS BEEN CONSTRUCTED, AND CERTIFIED TO THE ABOVE VOLUME.
- PONDS 2B AND 3 WILL BE UPSIZED BY THIS PROJECT TO ACCOMMODATE FLOWS FROM UNITS 3 AND 4 AS WELL AS EXISTING UNITS 1 AND 2.

TEMPORARY OVERFLOW TO EXISTING PLAYA (TO BE ELIMINATED AS NECESSARY AS PART OF FUTURE DOWNSTREAM DEVELOPMENT)

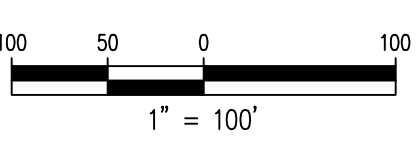
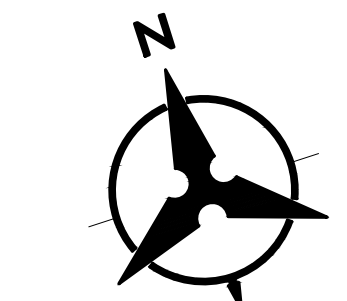
FUTURE POND EXPANSION IF NECESSARY

POND 4 TO BE UPSIZED AND IMPROVED BY FUTURE PROJECTS AS THOSE PROJECTS DEVELOP.





- GENERAL NOTES**
1. CONTRACTOR MUST OBTAIN A TOPSOIL DISTURBANCE PERMIT FROM THE ENVIRONMENTAL HEALTH DIVISION PRIOR TO CONSTRUCTION.
 2. THE CONTRACTOR IS TO REFER TO EARTHWORK SPECIFICATION AS NOTED IN THE SOILS REPORT BY GEO-TEST, INC. DATED 9-29-10
 3. THE CONTRACTOR SHALL CONFORM TO ALL CITY, COUNTY, STATE, AND FEDERAL DUST CONTROL MEASURES & REQUIREMENTS AND WILL BE RESPONSIBLE FOR PREPARING AND OBTAINING ALL NECESSARY APPLICATIONS AND APPROVALS.
 4. THE CONTRACTOR SHALL ENSURE THAT NO SOIL ERODES FROM THE LOTS INTO PUBLIC RIGHT-OF-WAY. THIS CAN BE ACHIEVED BY CONSTRUCTING TEMPORARY BERMS AS PER DETAIL, SHEET 3B, AND WETTING THE SOIL TO KEEP IT FROM BLOWING.
 5. ALL SPOT ELEVATIONS ARE TO FLOWLINE UNLESS OTHERWISE NOTED.
 6. BOULDERS GREATER THAN 3 FEET IN DIAMETER EXCAVATED DURING GRADING ACTIVITIES SHALL BE STOCKPILED AND DISPOSED OF AT THE DISCRETION OF THE OWNER.
 7. ALL WALLS SHOWN ARE TO BE PLACED ALONG PROPERTY LINE. WALLS ARE SHOWN OFFSET FOR VISUAL PURPOSE ONLY.
 8. ALL LOTS ADJACENT TO UNIVERSITY SHALL DRAIN TO THE ALLEY AS PER GRADES SHOWN ON GRADING PLAN. ROOF DRAINAGE SHALL BE GUTTERED TO PREVENT THESE FLOWS FROM ENTERING UNIVERSITY BLVD.



- LEGEND**
- (91.62) FUTURE SPOT ELEVATION
 - 91.62 PROPOSED SPOT ELEVATION
 - × 92.46 EXISTING SPOT ELEVATION (GRND & TC)
 - ===== EXISTING CURB & GUTTER
 - ===== PROPOSED MOUNTABLE CURB & GUTTER
 - ===== PROPOSED STANDARD CURB & GUTTER
 - 54.70— EXISTING CONTOUR W/ INDEX ELEVATION
 - FLOW ARROW
 - ===== PROPOSED RETAINING WALL (TO BE BUILT BY HOME BUILDER)
 - ===== PROPOSED GARDEN WALL, CONCRETE FILLED TO 1-FOOT DEPTH
 - ===== PROPOSED SLOPE
 - ===== PROPOSED STORM DRAIN
 - ===== PROPOSED STORM DRAIN MANHOLE
 - ===== PROPOSED STORM DRAIN INLET
 - ===== PROPOSED CATTLE GUARD INLET
 - ===== WALL DRAIN
 - GRADING PHASE BOUNDARY

Bohannon & Huston
www.bhinc.com 800.877.5332

		CITY OF ALBUQUERQUE PUBLIC WORKS DEPARTMENT	
MESA DEL SOL MONTAGE UNIT 3B GRADING AND DRAINAGE PLAN OVERALL			
Design Review Committee	City Engineer Approval	Last Design Update	Mo./Day/Yr.
City Project No.	Zone Map No.	Sheet	Of
775782	R-15,16 S-15,16	1	7

