



ALBUQUERQUE FIRE MARSHAL'S
DIVISION OFFICE PLANS
CHECKING DIVISION
PERMIT
PERMIT NUMBER: FP 24-020638
APPROVED DATE: 08/20/24
APPROVED
THESE CONSTRUCTION DOCUMENTS WERE REVIEWED AND APPROVED BY THE
ALBUQUERQUE FIRE MARSHAL'S OFFICE IN ACCORDANCE WITH THE CITY
ORDINANCE, THE INTERNATIONAL FIRE CODE, AND NFPA STANDARDS. THIS
PERMIT IS VALID FOR 180 DAYS. FINAL INSPECTION IS REQUIRED.
FIRE FLOW: 2 HYDRANTS, 2250 GPM

CODE DESIGN DATA I.B.C. 2021

CHAPTER 3 OCCUPANCY AND USE CLASSIFICATION:	GROUP B OFFICE GROUP R2 APARTMENT SB SPRINKLED 60' 3 STORY 21,000 S.F.
TABLE 504.3, ALLOWABLE HEIGHT: TABLE 504.4 ALLOWABLE STORIES: TABLE 506.2 ALLOWABLE AREA:	1 HOUR SEPARATION R2-B TYPE 5-B, EXTERIOR-INTERIOR BEARING WALLS, NO FIRE-RESISTANCE RATING REQUIRED.
BUILDING AREAS, REF: SITE PLAN FOR BLDG. LOCATION:	71,560 S.F. NOTE: REF: BUILDING LEGEND FOR EACH BUILDING S.F. (THIS SHEET). NOTE: LARGEST BUILDING S.F. IS BUILDING "L" 11,000 S.F. (ALLOWABLE IS 17,500 S.F.) NOTE: GROUP B & S-1 AT BLDG'S "A" AND "B" SEPARATED BY ONE HOUR FIRE RATED WALL
SECTION 903 AUTOMATIC SPRINKLER SYSTEM:	SPRINKLER SYSTEM REQUIRED FOR GROUP R2.
SECTION 1004.1.2 OCCUPANT LOAD TABLE BUILDING OCCUPANT LOAD:	OFFICE (B): 780 S.F./150 = 5.20 OCC. APARTMENT (R2): 780 S.F./200 = 3.90 OCC. TOTAL OCC: = 9.10 OCC. (10)
SECTION 1005 MEANS OF EGRESS SIZING OFFICE/APARTMENT	EGRESS WIDTH REQUIRED: 10 x .2 = 2 INCH MIN. WIDTH EGRESS WIDTH PROVIDED: 2-36" WIDE DOORS = 72"
TABLE 1006.3.1 MINIMUM NUMBER OF EXITS PER STORY	OCCUPANT LOAD PER STORY 1-500 = (2) EXITS REQUIRED, (2) EXITS PROVIDED

CODE DESIGN DATA I.B.C. 2021

CHAPTER 3 OCCUPANCY AND USE CLASSIFICATION:	GROUP S1 MODERATE-HAZARD STORAGE
GROUP S1: TABLE 504.3, ALLOWABLE HEIGHT: TABLE 504.4 ALLOWABLE STORIES: TABLE 506.2 ALLOWABLE AREA:	2-B 55' 2 STORY 17,500 S.F.
TABLE 508.4 REQUIRED SEPARATION OF OCC. (HOURS): TABLE 601 FIRE-RESISTANCE RATING REQUIREMENTS:	NO SEPARATION REQUIREMENT TYPE 2-B, EXTERIOR-INTERIOR BEARING WALLS, NO FIRE-RESISTANCE RATING REQUIRED.
BUILDING AREAS, REF: SITE PLAN FOR BLDG. LOCATION:	71,560 S.F. NOTE: REF: BUILDING LEGEND FOR EACH BUILDING S.F. (THIS SHEET). NOTE: LARGEST BUILDING S.F. IS BUILDING "L" 11,000 S.F. (ALLOWABLE IS 17,500 S.F.) NOTE: GROUP B & S-1 AT BLDG'S "A" AND "B" SEPARATED BY ONE HOUR FIRE RATED WALL
SECTION 903 AUTOMATIC SPRINKLER SYSTEM:	NO SPRINKLER SYSTEM REQUIRED FOR GROUP S1.
SECTION 1004.1.2 OCCUPANT LOAD TABLE BUILDING OCCUPANT LOAD:	SELF STORAGE (S1): 70,000 S.F./500 = 140.00 OCC. TOTAL OCC: 71,560 S.F. = 149.10 OCC. (150)

LIFE SAFTY GENERAL NOTES

- PREMISE IDENTIFICATION - SHALL BE MINIMUM 4 INCHES HIGH x .5 INCH WIDE AND SHALL CONTRAST WITH THEIR BACKGROUND AND SHALL BE VISIBLE FROM THE STREET OR ROAD FRONTING THE PROPERTY.
- GENERAL CONTRACTOR TO PROVIDE AND INSTALL NOCK BOX. NOCK BOX TO BE INSTALLED IN AN ACCESSIBLE LOCATION AND BE MOUNTED NO HIGHER THAN 6'-0" ABOVE FINISH FLOOR. THE NOCK BOX SHALL BE OF AN APPROVED TYPE LISTED IN ACCORDANCE WITH UL 1037, AND SHALL CONTAIN KEYS TO GAIN ACCESS TO BUILDING AND FIRE RISER ROOM. FINAL LOCATION TO BE APPROVED BY THE FIRE MARSHALL.
- G.C. TO PROVIDE FIRE EXTINGUISHERS 2A-10-BC, 1 PER EACH 1,500 S.F. (2 PROVIDED PER 2021 IBC TABLE 906.3(1) MODERATE HAZARD). 70,000/1,500 = 47 FIRE EXTINGUISHERS. REF: FLOOR PLANS FOR QUANTITY, LOCATIONS AND TYPE.
- ALL PENETRATIONS THROUGH A FIRE RATED WALL ASSEMBLY TO BE FIRESTOPPED WITH THERMAFIBER AS MANUFACTURED BY THERMAFIBER, LLC, WABASH, 46992 OR OTHER APPROVED EQUAL.
- ALL EXIT SIGNS AND EMERGENCY LIGHTING SHALL HAVE BATTERY BACK-UP. REF: ELECTRICAL.
- SHOP DRAWING TO BE SUBMITTED TO THE FIRE MARSHAL'S OFFICE FOR REVIEW AND APPROVAL OF ANY INSTALLATION OR MODIFICATION TO THE FIRE SPRINKLER SYSTEM, FIRE ALARM SYSTEM, KITCHEN SYSTEM, OR ANY OTHER FIRE RELATED SYSTEM.
NOTE: THE FIRE SPRINKLER SYSTEM WILL BE SUPERVISED IF REQUIRED BY THE 2015 INTERNATIONAL FIRE CODE (I.F.C.).

FIRE APPARATUS ACCESS ROADS NOTES:

- FIRE APPARATUS ACCESS ROADS SHALL HAVE AN ASPHALT, CONCRETE, OR OTHER APPROVED DRIVING SURFACE CAPABLE OF SUPPORTING THE IMPOSED LOAD OF FIRE APPARATUS WEIGHING AT LEAST 75,000 POUNDS.
- ENGINEERING DATA SHALL BE SUBMITTED TO SUBSTANTIATE WEIGHT BEARING CAPACITY AND ALL WEATHER DRIVING CAPABILITIES FOR FIRE APPARATUS ACCESS ROADS.
- FIRE APPARATUS ACCESS ROADS SHALL NOT EXCEED 10 PERCENT IN GRADE.

FIRE FLOW REQUIREMENTS

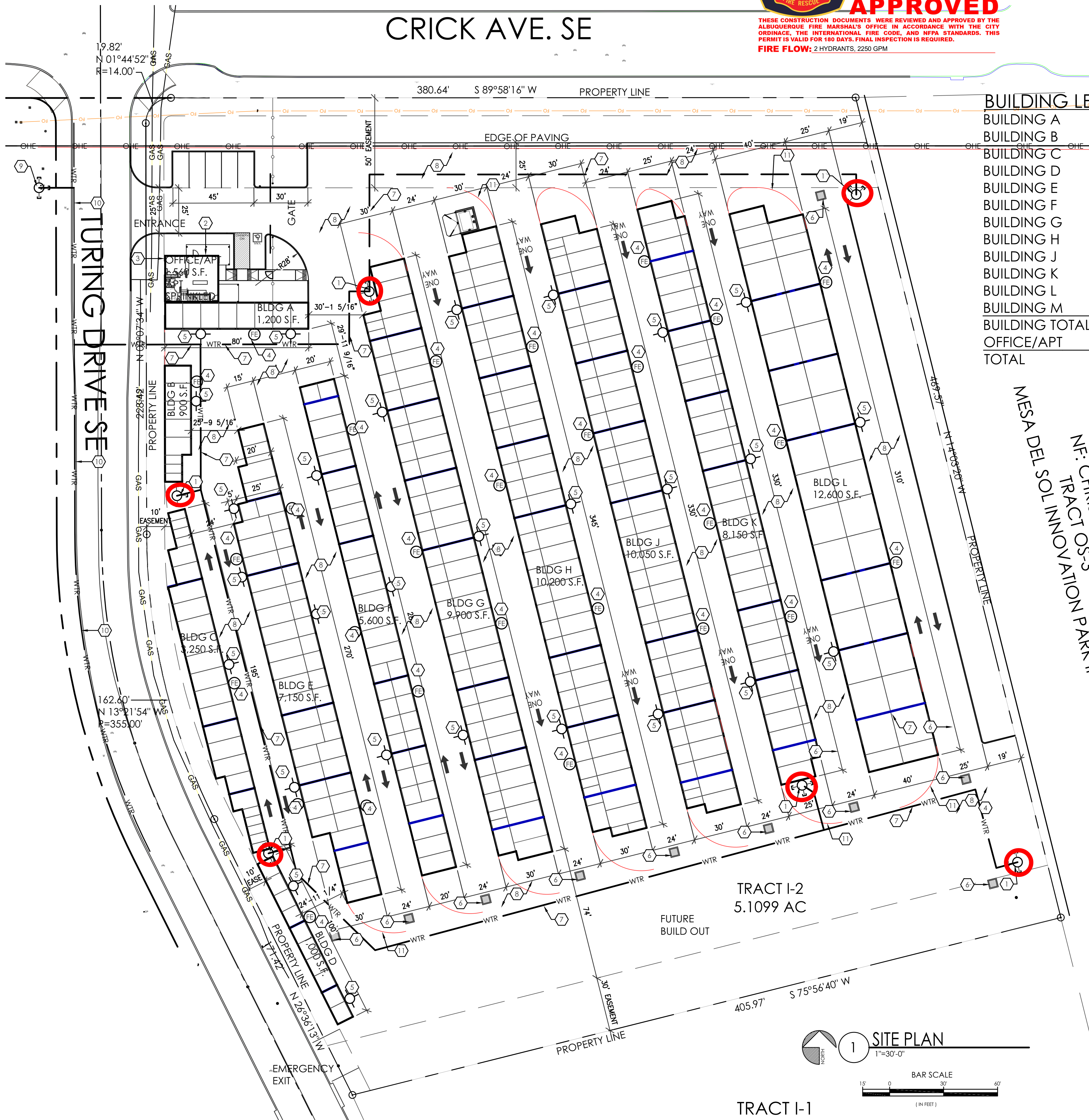
TYPE VB 1,560 S.F. (2 STORY)
0-3,600 S.F. = 1,500 G.P.M. = 2 HOUR FLOW DURATIONS
1,750 OR LESS G.P.M. = 1 HYDRANTS = 500 FEET SPACING = 250 FEET MAX DISTANCE

TYPE IIB 70,000 S.F. (12 BUILDINGS, 1 STORY)
65,401-70,600 S.F. = 5,500 G.P.M. = 4 HOUR FLOW DURATIONS
5,001 - 5,500 G.P.M. = 6 HYDRANTS = 300 FEET SPACING = 180 FEET MAX DISTANCE

TOTAL 6 FIRE HYDRANTS PROVIDED, PLUS 1 EXISTING

KEYED NOTES

- NEW FIRE HYDRANT LOCATION, REF: UTILITY SITE PLAN.
- KNOX BOX LOCATION BETWEEN 4' AND 6' A.F.F. ILLUMINATED AND IMMEDIATELY VISIBLE.
- PREMISE ID LOCATION COORDINATE WITH FIRE MARSHAL.
- WALL MOUNTED FIRE EXTINGUISHER, 2A-10-BC, 1 AT EVERY 75'-0" MAX., REF: SITE PLAN FOR LOCATIONS.
- WALL MOUNTED SITE LIGHT, REF: ELECTRICAL.
- STORM DRAIN INLETS
- 6" CP900 FIRE LINE.
- ASPHALT PAVING.
- EXISTING FIRE HYDRANT.
- EXISTING 12" WATER LINE.
- 28'-0" RADIUS, TYP. LINE SHOWN FOR RADIUS LAYOUT ONLY.
-



BUILDING LEGEND	
BUILDING A	1,200 S.F.
BUILDING B	900 S.F.
BUILDING C	3,250 S.F.
BUILDING D	1,100 S.F.
BUILDING E	6,250 S.F.
BUILDING F	4,700 S.F.
BUILDING G	8,450 S.F.
BUILDING H	9,500 S.F.
BUILDING J	9,050 S.F.
BUILDING K	7,200 S.F.
BUILDING L	11,000 S.F.
BUILDING M	7,400 S.F.
BUILDING TOTAL	70,000 S.F.
OFFICE/APT	1,560 S.F.
TOTAL	71,560 S.F.

MESA DEL SOL SELF STORAGE
FIRE 1 SITE
5500 TURNING DR SE
ALBUQUERQUE, NM 87106
PROJECT #2322

REVISION DATE 08-20-2024
STATE OF NEW MEXICO RICHARD P. BENNETT No. 1240 7/16/24 REGISTERED ARCHITECT
RBA ARCHITECTURE PC PLANNING DESIGN 1000 1st Ave. NE Albuquerque, NM 87102 www.rba.com
DATE 07-16-2024
SHEET NUMBER FIRE-1.0