

CITY OF ALBUQUERQUE

Planning Department
Alan Varela, Director



Mayor Timothy M. Keller

February 25, 2025

Mike Balaskovits, PE
Bohannon Huston, Inc.
7500 Jefferson St NE
Albuquerque, NM 87109

RE: ABQ Studios Expansion – Vendor Support 1 & 2
5650 University SE
Permanent C.O. - Accepted
Engineer’s Certification Date: 01/29/2025
Engineer’s Stamp Date: 7/3/2022
Hydrology File: R16DA3005AA
Case # HYDR-2025-00036

PO Box 1293

Dear Mr. Balaskovits:

Albuquerque

Based on the Certification received 02/13/2025 and site visit on 02/24/2025, this letter serves as a “green tag” from Hydrology Section for a Permanent Certificate of Occupancy to be issued by the Building and Safety Division.

NM 87103

If you have any questions, please contact me at 505-924-3314 or amontoya@cabq.gov.

www.cabq.gov

Sincerely,

Anthony Montoya, Jr., P.E., CFM
Senior Engineer, Hydrology
Planning Department, Development Review Services



City of Albuquerque

Planning Department
Development & Building Services Division

DRAINAGE AND TRANSPORTATION INFORMATION SHEET (DTIS)

Project Title: _____ Hydrology File # _____

Legal Description: _____

City Address, UPC, OR Parcel: _____

Applicant/Agent: _____ Contact: _____

Address: _____ Phone: _____

Email: _____

Applicant/Owner: _____ Contact: _____

Address: _____ Phone: _____

Email: _____

(Please note that a DFT SITE is one that needs Site Plan Approval & ADMIN SITE is one that does not need it.)

TYPE OF DEVELOPMENT: PLAT (#of lots) _____ RESIDENCE
DFT SITE ADMIN SITE

RE-SUBMITTAL: YES NO

DEPARTMENT: TRANSPORTATION HYDROLOGY/DRAINAGE

Check all that apply under Both the Type of Submittal and the Type of Approval Sought:

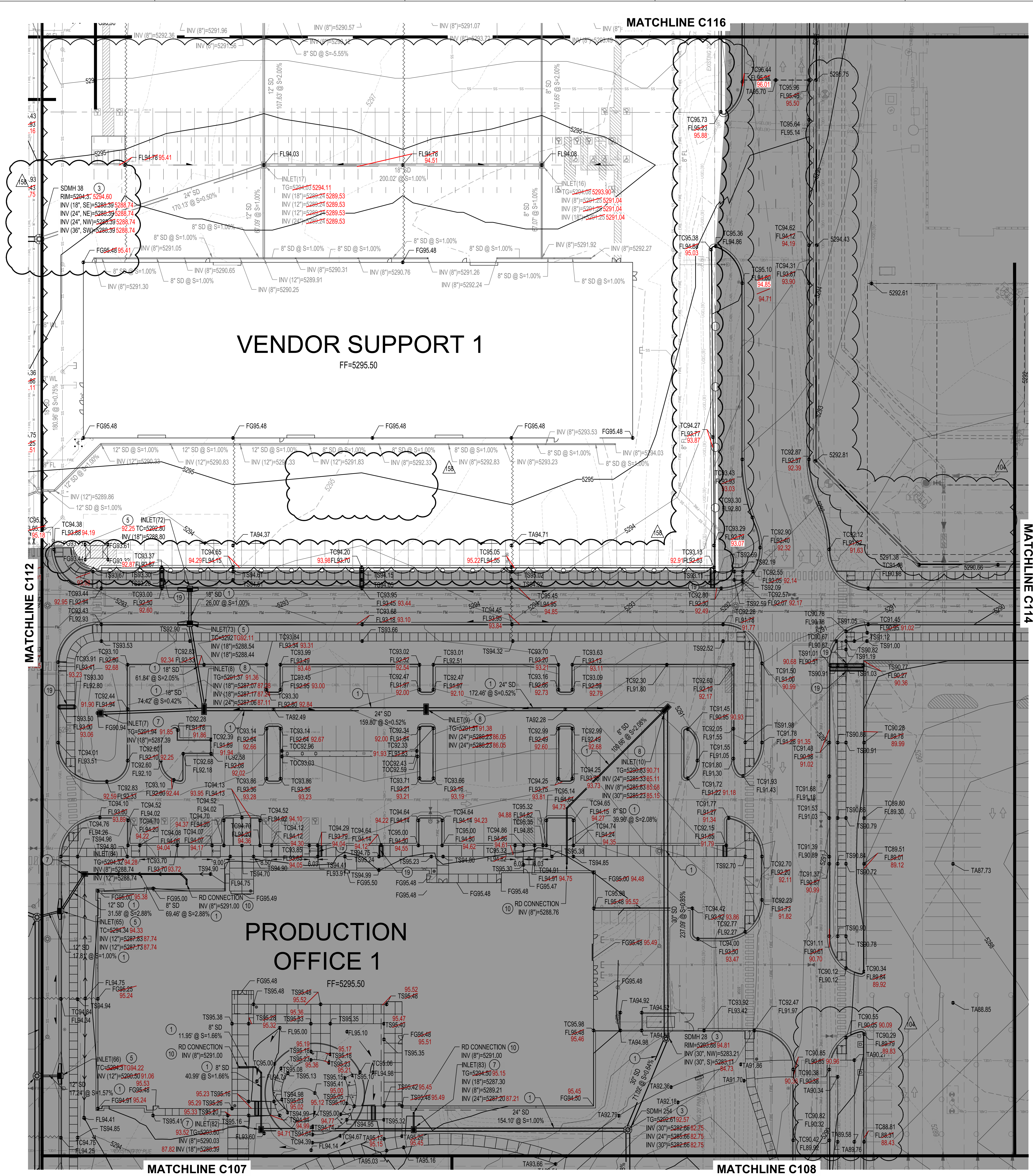
TYPE OF SUBMITTAL:

- ENGINEER/ARCHITECT CERTIFICATION
- PAD CERTIFICATION
- CONCEPTUAL G&D PLAN
- GRADING & DRAINAGE PLAN
- DRAINAGE REPORT
- DRAINAGE MASTER PLAN
- CLOMR/LOMR
- TRAFFIC CIRCULATION LAYOUT (TCL)
ADMINISTRATIVE
- TRAFFIC CIRCULATION LAYOUT FOR DFT
APPROVAL
- TRAFFIC IMPACT STUDY (TIS)
- STREET LIGHT LAYOUT
- OTHER (SPECIFY) _____

TYPE OF APPROVAL SOUGHT:

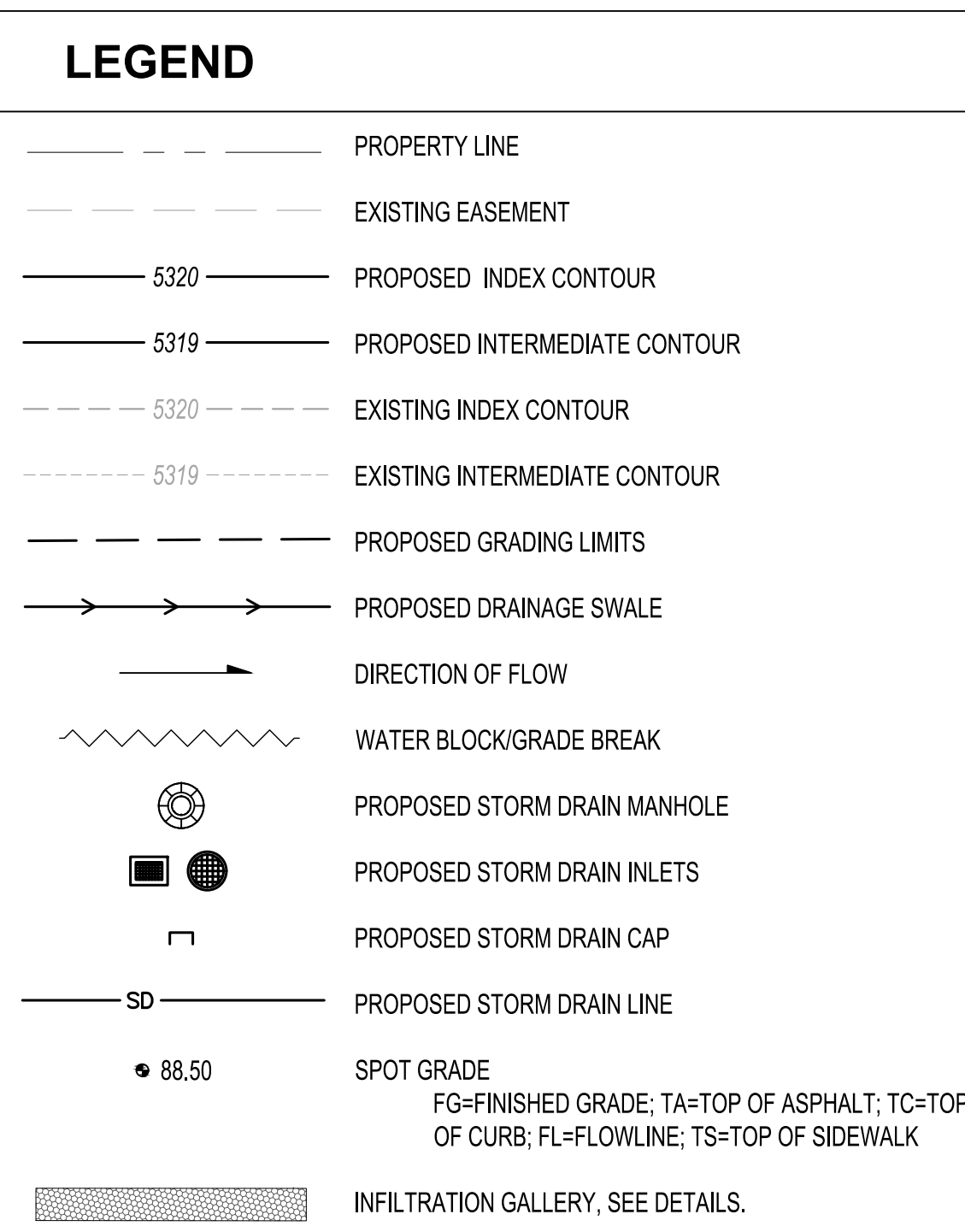
- BUILDING PERMIT APPROVAL
- CERTIFICATE OF OCCUPANCY **VENDOR SUPPORT 2**
- CONCEPTUAL TCL DFT APPROVAL
- PRELIMINARY PLAT APPROVAL
- FINAL PLAT APPROVAL
- SITE PLAN FOR BLDG PERMIT DFT
APPROVAL
- SIA/RELEASE OF FINANCIAL GUARANTEE
- FOUNDATION PERMIT APPROVAL
- GRADING PERMIT APPROVAL
- SO-19 APPROVAL
- PAVING PERMIT APPROVAL
- GRADING PAD CERTIFICATION
- WORK ORDER APPROVAL
- CLOMR/LOMR
- OTHER (SPECIFY) _____

DATE SUBMITTED: _____



- ### GRADING KEYED NOTES
- INSTALL STORM DRAIN PIPE. SEE PLAN FOR SIZE & SLOPE.
 - CONSTRUCT 4" DIA TYPE "E" STORM DRAIN MANHOLE PER COA STD DWG 2101.
 - CONSTRUCT 6" DIA TYPE "E" STORM DRAIN MANHOLE PER COA STD DWG 2101.
 - CONSTRUCT TYPE "A" SINGLE GRATE SD INLET PER COA STD DWG 2201, OR EQUAL.
 - CONSTRUCT TYPE "C" SINGLE GRATE SD INLET PER COA STD DWG 2205, OR EQUAL.
 - CONSTRUCT TYPE "D" DOUBLE GRATE SD INLET PER COA STD DWG 2205, OR EQUAL.
 - CONSTRUCT TYPE "D" SINGLE GRATE SD INLET PER COA STD DWG 2206, OR EQUAL.
 - CONSTRUCT TYPE "D" DOUBLE GRATE SD INLET PER COA STD DWG 2206, OR EQUAL.
 - TIE TO EXISTING. CONTACT ENGINEER IF FIELD CONDITIONS VARY FROM WHAT IS INDICATED IN THESE PLANS.
 - INSTALL ROOF DRAIN PIPE (SIZE PER PLANS) TO WITHIN 5' OF BUILDING. SEE PLUMBING PLANS FOR CONTINUATION. SEE DETAIL 1, SHEET C119 FOR DETAIL.
 - CONSTRUCT RETENTION POND.
 - FUTURE RETENTION POND. TO BE BUILT WITH FUTURE PHASES.
 - INSTALL PRE-MANUFACTURED STORM DRAIN FITTING, (SIZE(S) PER PLAN).
 - EXISTING UTILITY TO REMAIN. PROTECT IN PLACE.
 - CONNECT TO EXISTING STORM DRAIN INFRASTRUCTURE.
 - CONSTRUCT 12" x 10' x 10' EROSION CONTROL MAT. TYPE: VLV RIPRAP WITH FILTER FABRIC AND 12" SUBGRADE PREPARATION. SEE DETAIL 2, SHEET C119.
 - INSTALL STORM DRAIN FLARED END SECTION, SIZE PER PLANS.
 - INSTALL 24"x24" NYLOPLAST INLET WITH DOME GRATE.
 - INSTALL 24" SIDEWALK CULVERT PER COA STANDARD DWG 2236
 - 18" CURB CUT PER DETAIL 4, SEE SHEET C119.
 - INSTALL INFILTRATION TRENCH PER DETAIL 5, SHEET C119.
 - ENERGY DISSIPATION BASIN. SEE LANDSCAPE PLANS FOR DETAILS.
 - SWALE TO DRAIN TO NEW RETENTION POND.

NOTE: CURB INLET GRADES ARE PROVIDED AT TC (TOP OF CURB). DEPRESS FLOWLINE AND CONNECT TO ADJACENT CURB AND GUTTER AS INDICATED ON STANDARD DRAWINGS.

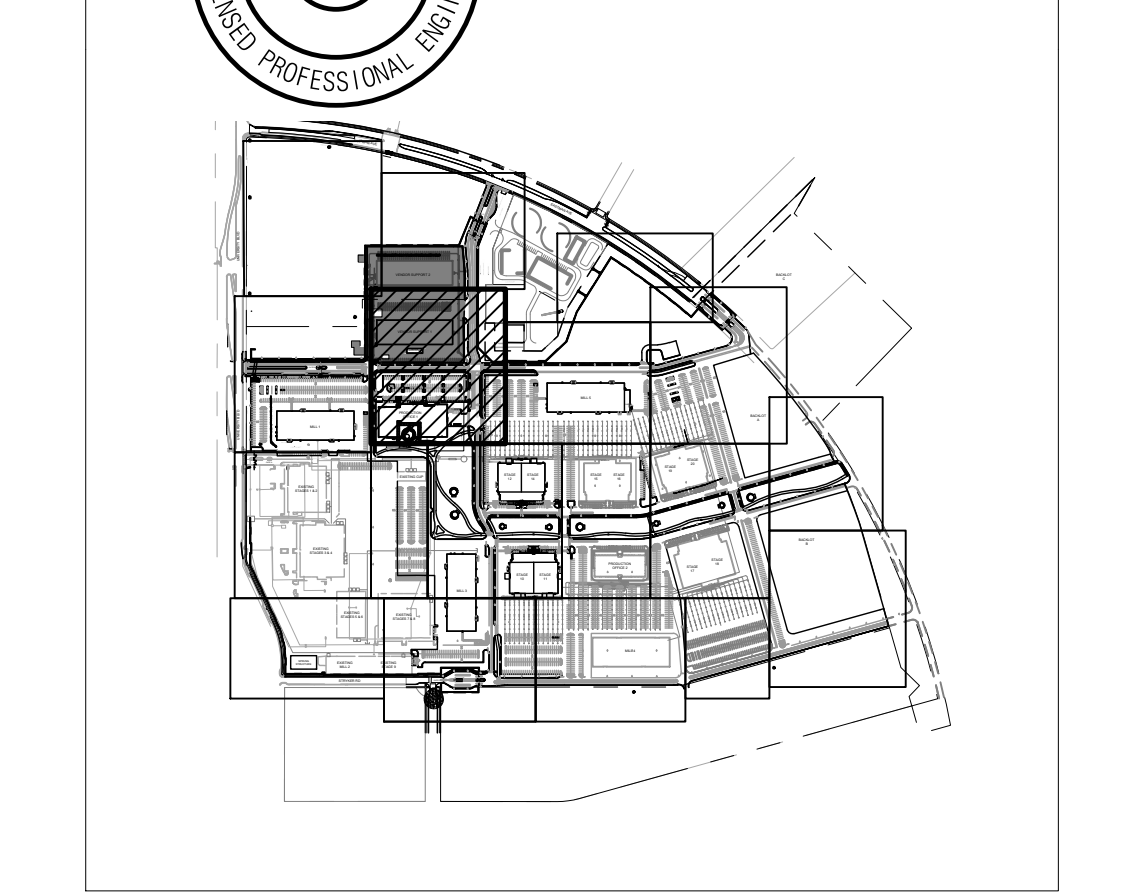


GRADING AND DRAINAGE CERTIFICATION

I, MICHAEL BALASKOVITS, NMPE 18187, OF THE FIRM BOHANNAN HUSTON, HEREBY CERTIFY THE VENDOR SUPPORT 1 & 2, AT ABQ STUDIOS EXPANSION, HAS BEEN GRADED AND WILL DRAIN IN SUBSTANTIAL COMPLIANCE WITH AND IN ACCORDANCE WITH THE APPROVED GRADING AND DRAINAGE PLAN (COA APPROVAL LETTER DATED 7/3/2022), THE RECORD INFORMATION EDITED ON TO THE ORIGINAL DESIGN DOCUMENT HAS BEEN PROVIDED BY BRIAN J. MARTINEZ, NMPS 18374. I FURTHER CERTIFY THAT I HAVE PERSONALLY VISITED THE PROJECT SITE (01/29/2025) AND HAVE DETERMINED BY VISUAL INSPECTION THAT THE DATA PROVIDED IS REPRESENTATIVE OF ACTUAL SITE CONDITIONS AND IS TRUE AND CORRECT TO THE BEST OF MY KNOWLEDGE AND BELIEF.

THE RECORD INFORMATION PRESENTED HEREON IS NOT NECESSARILY COMPLETE AND INTENDED ONLY TO VERIFY SUBSTANTIAL COMPLIANCE OF THE GRADING ASPECTS OF THIS PROJECT, THOSE RELYING ON THE RECORD DOCUMENT ARE ADVISED TO OBTAIN INDEPENDENT VERIFICATION OF ITS ACCURACY BEFORE USING IT FOR ANY OTHER PURPOSE.

Michael Balaskovits, NMPE 18187 DATE 01-29-2025



DEKKER PERICH SABATINI

Bohannan Huston
www.bhinc.com
800.877.5332

PROFESSIONAL ENGINEER

ABQ Studios Expansion MILL 1 & OVERALL SITE

5650 University Blvd SE
Albuquerque, NM 87106

M1S.4

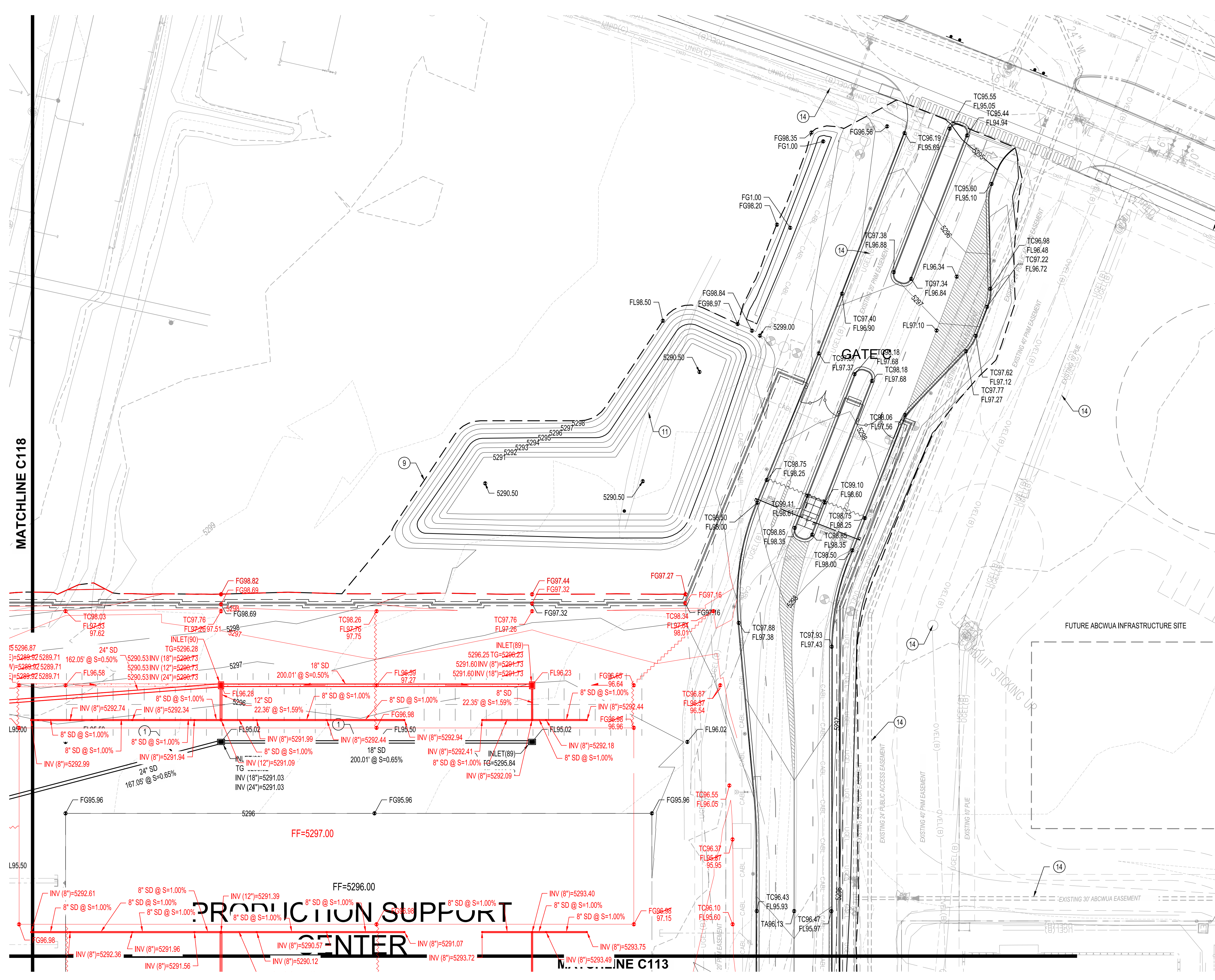
Building & Site FOR PERMIT

REVISIONS	DATE
ASI 032	09/30/22
ASI 027	12/10/22
ASI 078	02/23/23
ASI 097	05/05/23
ASI 095	07/28/23
ASI 146R1	02/08/24

DRAWN BY HG
REVIEWED BY OB
DATE 04/22/2022
PROJECT NO. 20-0072.008
DRAWING NAME

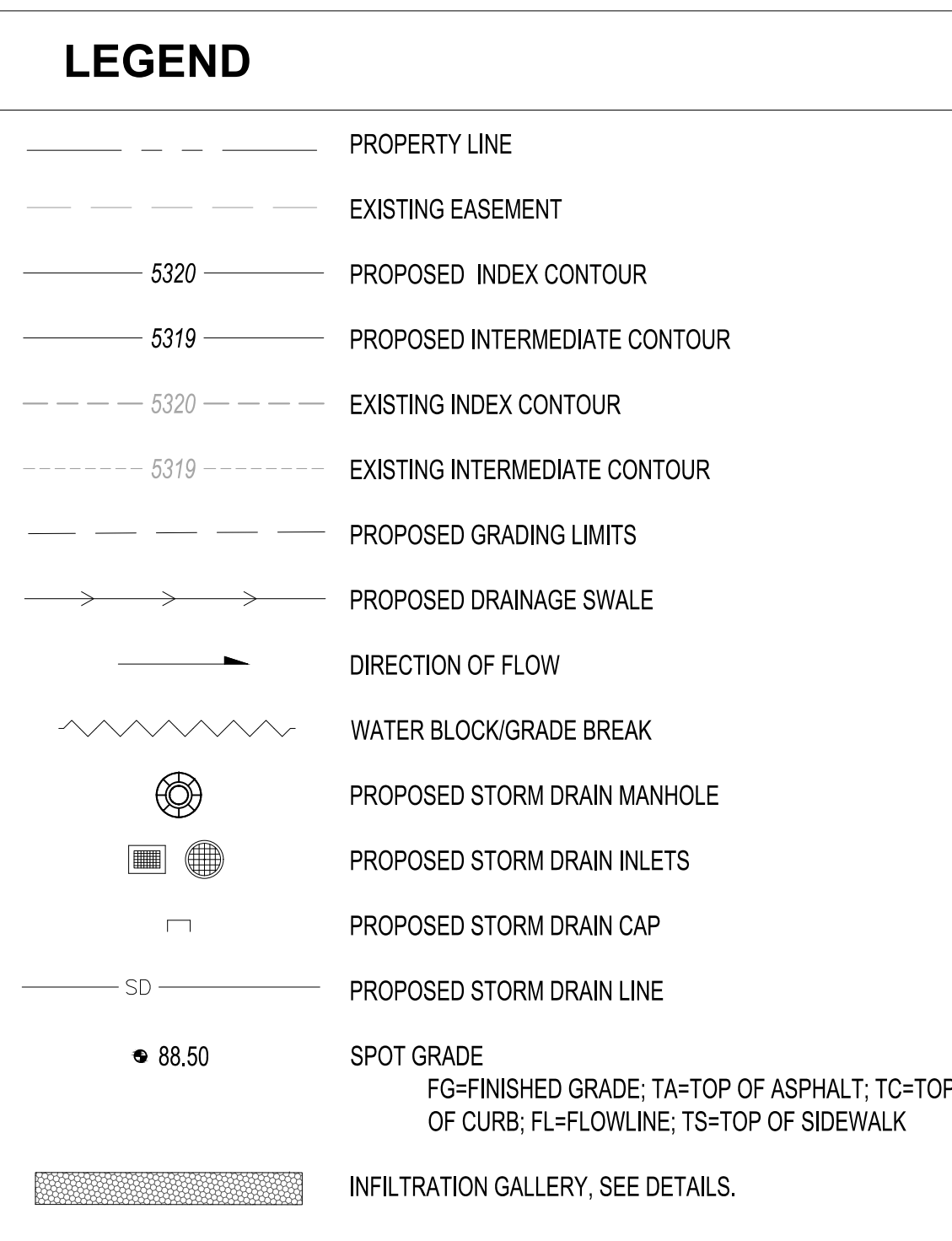
GRADING PLAN

SHEET NO. **C113**

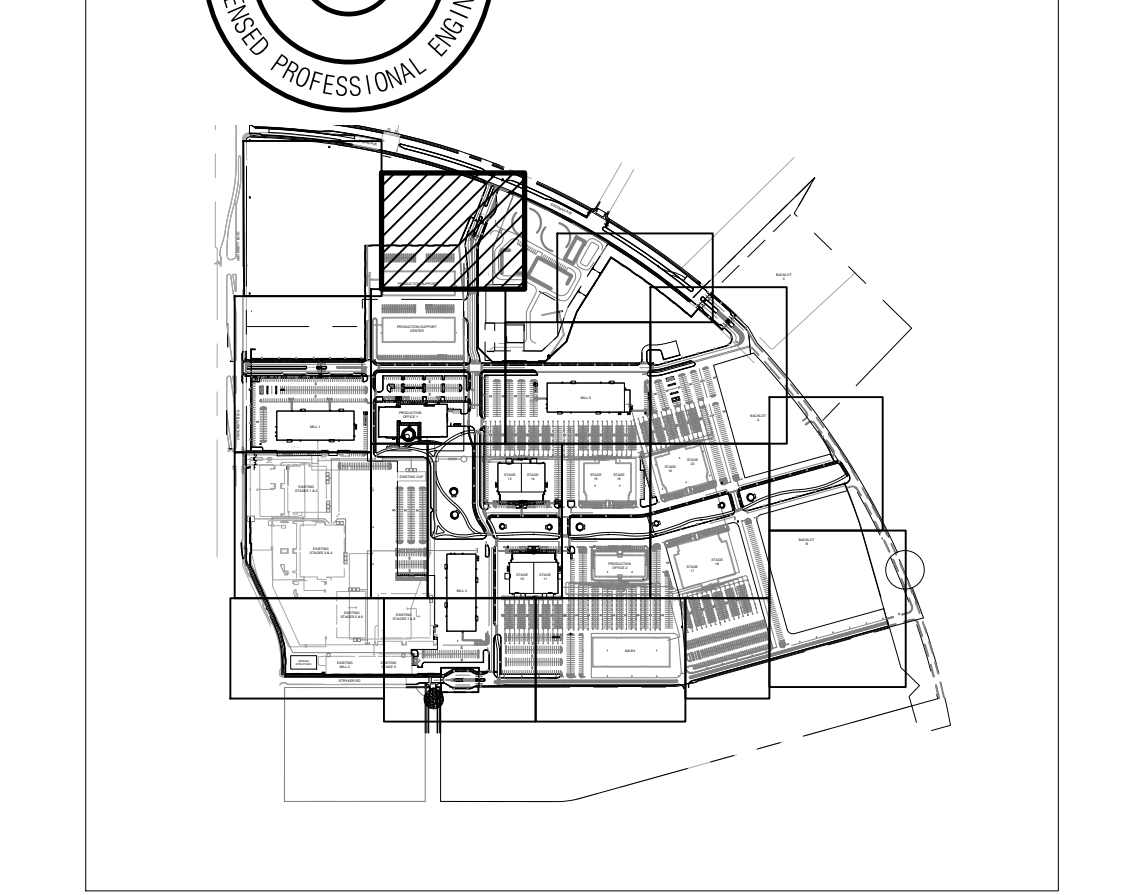


- ### GRADING KEYED NOTES
- INSTALL STORM DRAIN PIPE. SEE PLAN FOR SIZE & SLOPE.
 - CONSTRUCT 4" DIA TYPE "E" STORM DRAIN MANHOLE PER COA STD DWG 2101.
 - CONSTRUCT 6" DIA TYPE "E" STORM DRAIN MANHOLE PER COA STD DWG 2101.
 - CONSTRUCT TYPE "A" SINGLE GRATE SD INLET PER COA STD DWG 2201, OR EQUAL.
 - CONSTRUCT TYPE "C" SINGLE GRATE SD INLET PER COA STD DWG 2205, OR EQUAL.
 - CONSTRUCT TYPE "C" DOUBLE GRATE SD INLET PER COA STD DWG 2205, OR EQUAL.
 - CONSTRUCT TYPE "D" SINGLE GRATE SD INLET PER COA STD DWG 2206, OR EQUAL.
 - CONSTRUCT TYPE "D" DOUBLE GRATE SD INLET PER COA STD DWG 2206, OR EQUAL.
 - TIE TO EXISTING. CONTACT ENGINEER IF FIELD CONDITIONS VARY FROM WHAT IS INDICATED IN THESE PLANS.
 - INSTALL ROOF DRAIN PIPE (SIZE PER PLANS) TO WITHIN 5' OF BUILDING. SEE PLUMBING PLANS FOR CONTINUATION. SEE DETAIL 1, SHEET C119 FOR DETAIL.
 - CONSTRUCT RETENTION POND.
 - FUTURE RETENTION POND, TO BE BUILT WITH FUTURE PHASES.
 - INSTALL PRE-MANUFACTURED STORM DRAIN FITTING, SIZE(S) PER PLAN.
 - EXISTING UTILITY TO REMAIN. PROTECT IN PLACE.
 - CONNECT TO EXISTING STORM DRAIN INFRASTRUCTURE.
 - CONSTRUCT 12" x 10' EROSION CONTROL MAT, TYPE VL RIPRAP WITH FILTER FABRIC AND 12" SUBGRADE PREPARATION. SEE DETAIL 2, SHEET C119.
 - INSTALL STORM DRAIN FLARED END SECTION, SIZE PER PLANS.
 - INSTALL 24"x24" NYLOPLAST INLET WITH DOME GRATE.
 - INSTALL 24" SIDEWALK CULVERT PER COA STANDARD DWG 2236
 - 18" CURB CUT PER DETAIL 4, SEE SHEET C119.
 - INSTALL INFILTRATION TRENCH PER DETAIL 5, SHEET C119.
 - ENERGY DISSIPATION BASIN, SEE LANDSCAPE PLANS FOR DETAILS.
 - SWALE TO DRAIN TO NEW RETENTION POND.

NOTE: CURB INLET GRADES ARE PROVIDED AT TC (TOP OF CURB), DEPRESS FLOWLINE AND CONNECT TO ADJACENT CURB AND GUTTER AS INDICATED ON STANDARD DRAWINGS.

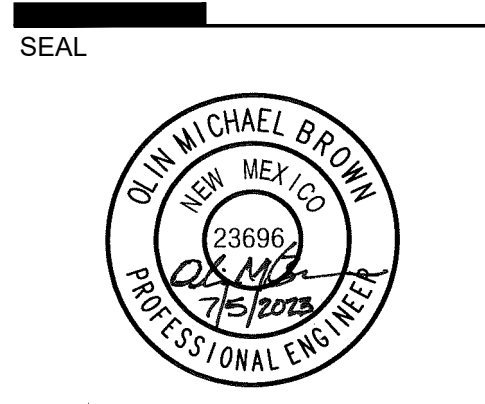


GRADING AND DRAINAGE CERTIFICATION
 I, MICHAEL BALASKOVITS, NMPE 18187, OF THE FIRM BOHANNAN HUSTON, HEREBY CERTIFY THE VENDOR SUPPORT 1 & 2, AT ABQ STUDIOS EXPANSION, HAS BEEN GRADED AND WILL DRAIN IN SUBSTANTIAL COMPLIANCE WITH AND IN ACCORDANCE WITH THE DESIGN INTENT OF THE APPROVED GRADING AND DRAINAGE PLAN (COA APPROVAL LETTER DATED 7/03/2022). THE RECORD INFORMATION EDITED ONTO THE ORIGINAL DESIGN DOCUMENT HAS BEEN PROVIDED BY BRIAN J. MARTINEZ, NMPS 18374. I FURTHER CERTIFY THAT I HAVE PERSONALLY VISITED THE PROJECT SITE (01/29/2023) AND HAVE DETERMINED BY VISUAL INSPECTION THAT THE DATA PROVIDED IS REPRESENTATIVE OF ACTUAL SITE CONDITIONS AND IS TRUE AND CORRECT TO THE BEST OF MY KNOWLEDGE AND BELIEF.
 THE RECORD INFORMATION PRESENTED HEREON IS NOT NECESSARILY COMPLETE AND INTENDED ONLY TO VERIFY SUBSTANTIAL COMPLIANCE OF THE GRADING ASPECTS OF THIS PROJECT. THOSE RELYING ON THE RECORD DOCUMENT ARE ADVISED TO OBTAIN INDEPENDENT VERIFICATION OF ITS ACCURACY BEFORE USING IT FOR ANY OTHER PURPOSE.
 Michael Balaskovits, NMPE 18187 DATE 01-29-2023



DEKKER PERICH SABATINI

Bohannan Huston
 www.bhinc.com
 800.877.5332



ABQ Studios Expansion MILL 1 & OVERALL SITE
 5650 University Blvd SE
 Albuquerque, NM 87106

M1S.4
 Building & Site FOR PERMIT

REVISIONS	DATE	BY

DRAWN BY: HG
 REVIEWED BY: OB
 DATE: 04/22/2022
 PROJECT NO.: 20-0072.008
 DRAWING NAME:

GRADING PLAN

SHEET NO.
C116



- ### GRADING KEYED NOTES
- INSTALL STORM DRAIN PIPE. SEE PLAN FOR SIZE & SLOPE.
 - CONSTRUCT 4" DIA TYPE "E" STORM DRAIN MANHOLE PER COA STD DWG 2101.
 - CONSTRUCT 6" DIA TYPE "E" STORM DRAIN MANHOLE PER COA STD DWG 2101.
 - CONSTRUCT TYPE "A" SINGLE GRATE SD INLET PER COA STD DWG 2201, OR EQUAL.
 - CONSTRUCT TYPE "C" SINGLE GRATE SD INLET PER COA STD DWG 2205, OR EQUAL.
 - CONSTRUCT TYPE "C" DOUBLE GRATE SD INLET PER COA STD DWG 2205, OR EQUAL.
 - CONSTRUCT TYPE "D" SINGLE GRATE SD INLET PER COA STD DWG 2206, OR EQUAL.
 - CONSTRUCT TYPE "D" DOUBLE GRATE SD INLET PER COA STD DWG 2206, OR EQUAL.
 - TIE TO EXISTING. CONTACT ENGINEER IF FIELD CONDITIONS VARY FROM WHAT IS INDICATED IN THESE PLANS.
 - INSTALL ROOF DRAIN PIPE (SIZE PER PLANS) TO WITHIN 5' OF BUILDING. SEE PLUMBING PLANS FOR CONTINUATION. SEE DETAIL 1, SHEET C119 FOR DETAIL.
 - CONSTRUCT RETENTION POND.
 - FUTURE RETENTION POND, TO BE BUILT WITH FUTURE PHASES.
 - INSTALL PRE-MANUFACTURED STORM DRAIN FITTING, SIZE(S) PER PLAN.
 - EXISTING UTILITY TO REMAIN. PROTECT IN PLACE.
 - CONNECT TO EXISTING STORM DRAIN INFRASTRUCTURE.
 - CONSTRUCT 12" x 10' x 10' EROSION CONTROL MAT, TYPE VL RIPRAP WITH FILTER FABRIC AND 12" SUBGRADE PREPARATION. SEE DETAIL 2, SHEET C119.
 - INSTALL STORM DRAIN FLARED END SECTION, SIZE PER PLANS.
 - INSTALL 24"x24" NYLOPLAST INLET WITH DOME GRATE.
 - INSTALL 24" SIDEWALK CULVERT PER COA STANDARD DWG 2236
 - 18" CURB CUT PER DETAIL 4, SEE SHEET C119.
 - INSTALL INFILTRATION TRENCH PER DETAIL 5, SHEET C119.
 - ENERGY DISSIPATION BASIN, SEE LANDSCAPE PLANS FOR DETAILS.
 - SWALE TO DRAIN TO NEW RETENTION POND.
- NOTE: CURB INLET GRADES ARE PROVIDED AT TC (TOP OF CURB), DEPRESS FLOWLINE AND CONNECT TO ADJACENT CURB AND GUTTER AS INDICATED ON STANDARD DRAWINGS.

LEGEND

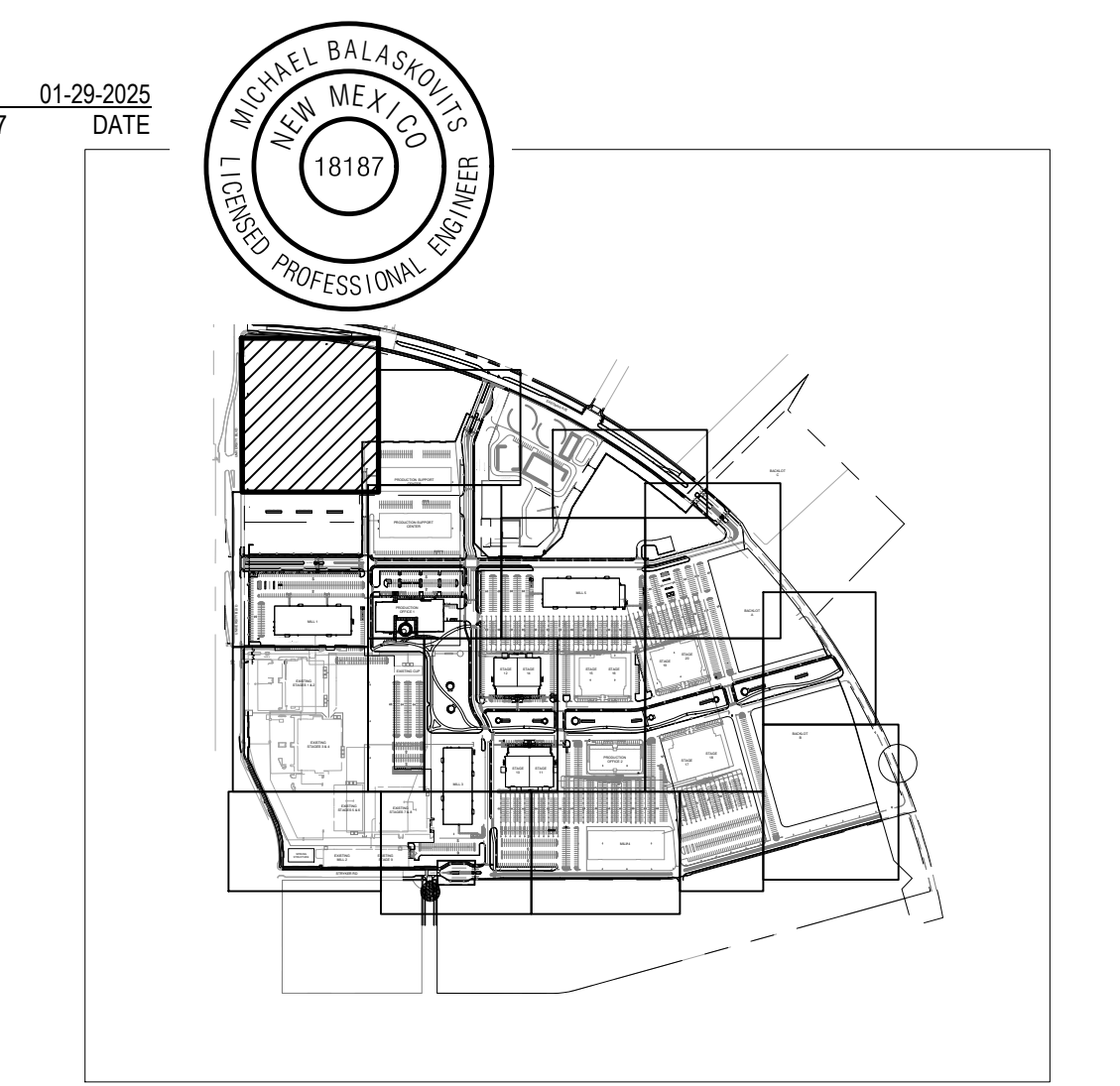
---	PROPERTY LINE
---	EXISTING EASEMENT
---	5320 PROPOSED INDEX CONTOUR
---	5319 PROPOSED INTERMEDIATE CONTOUR
---	5320 EXISTING INDEX CONTOUR
---	5319 EXISTING INTERMEDIATE CONTOUR
---	PROPOSED GRADING LIMITS
---	PROPOSED DRAINAGE SWALE
---	DIRECTION OF FLOW
---	WATER BLOCK/GRADE BREAK
---	PROPOSED STORM DRAIN MANHOLE
---	PROPOSED STORM DRAIN INLETS
---	PROPOSED STORM DRAIN CAP
---	PROPOSED STORM DRAIN LINE
● 88.50	SPOT GRADE
---	FG=FINISHED GRADE; TA=TOP OF ASPHALT; TC=TOP OF CURB; FL=FLOWLINE; TS=TOP OF SIDEWALK
---	INFILTRATION GALLERY, SEE DETAILS.

GRADING AND DRAINAGE CERTIFICATION

I, MICHAEL BALASKOVITS, NMPE 18187, OF THE FIRM BOHANNAN HUSTON, HEREBY CERTIFY THE VENDOR SUPPORT 1 & 2, AT ABQ STUDIOS EXPANSION, HAS BEEN GRADED AND WILL DRAIN IN SUBSTANTIAL COMPLIANCE WITH AND IN ACCORDANCE WITH THE DESIGN INTENT OF THE APPROVED GRADING AND DRAINAGE PLAN (COA APPROVAL LETTER DATED 7/03/2022). THE RECORD INFORMATION EDITED ONTO THE ORIGINAL DESIGN DOCUMENT HAS BEEN PROVIDED BY BRIAN J. MARTINEZ, NMPS 18374. I FURTHER CERTIFY THAT I HAVE PERSONALLY VISITED THE PROJECT SITE (01/29/2025) AND HAVE DETERMINED BY VISUAL INSPECTION THAT THE DATA PROVIDED IS REPRESENTATIVE OF ACTUAL SITE CONDITIONS AND IS TRUE AND CORRECT TO THE BEST OF MY KNOWLEDGE AND BELIEF.

THE RECORD INFORMATION PRESENTED HEREON IS NOT NECESSARILY COMPLETE AND INTENDED ONLY TO VERIFY SUBSTANTIAL COMPLIANCE OF THE GRADING ASPECTS OF THIS PROJECT. THOSE RELYING ON THE RECORD DOCUMENT ARE ADVISED TO OBTAIN INDEPENDENT VERIFICATION OF ITS ACCURACY BEFORE USING IT FOR ANY OTHER PURPOSE.

Michael Balaskovits, NMPE 18187 DATE 01-29-2025



DEKKER PERICH SABATINI

Bohannan Huston
www.bhinc.com
800.877.5332

SEAL

PROJECT

ABQ Studios Expansion MILL 1 & OVERALL SITE

5650 University Blvd SE
Albuquerque, NM 87106

M1S.4

Building & Site FOR PERMIT

REVISIONS

△	
△	
△	
△	
△	

DRAWN BY HG
REVIEWED BY OB
DATE 04/22/2022
PROJECT NO. 20-0072.008
DRAWING NAME

GRADING PLAN

SHEET NO. **C118**