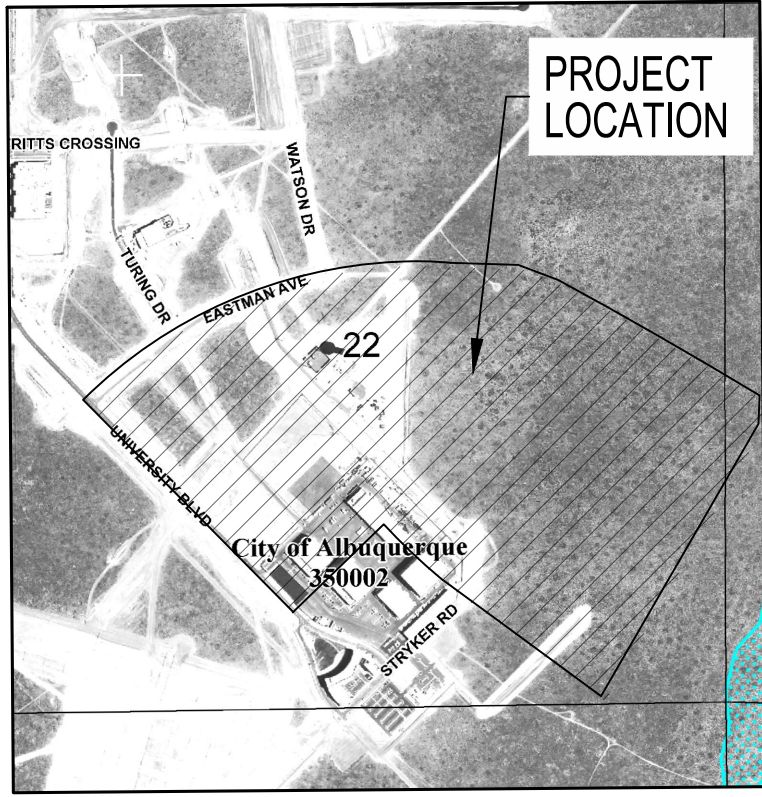


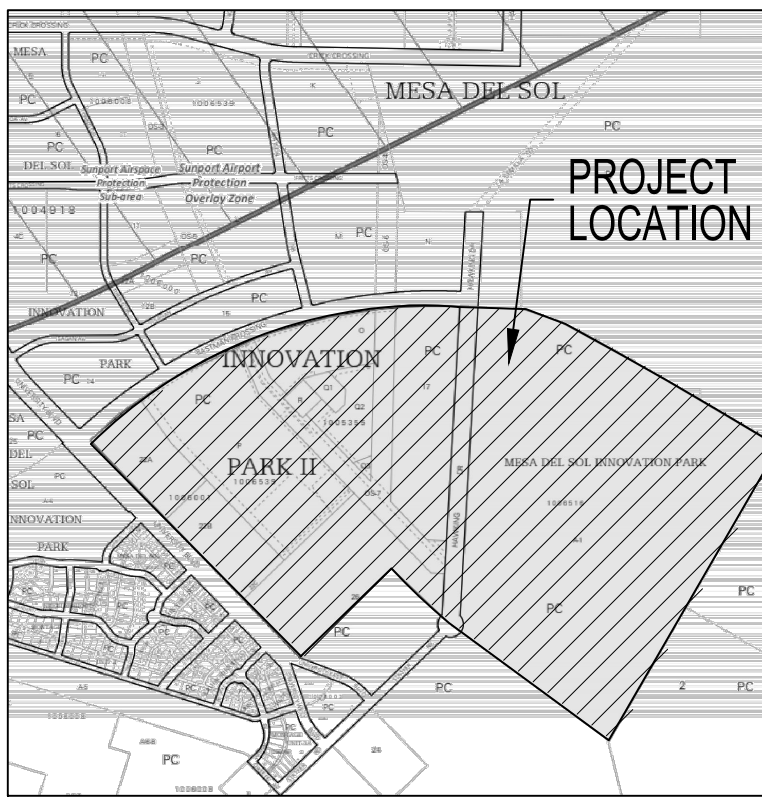
## SHEET INDEX

SHEET NUMBER	DESCRIPTION
C100	OVERALL ROUGH GRADING PLAN
C101	ROUGH GRADING PLAN
C102	ROUGH GRADING PLAN
C103	ROUGH GRADING PLAN
C104	ROUGH GRADING PLAN
C105	ROUGH GRADING PLAN
C106	ROUGH GRADING PLAN
C107	ROUGH GRADING PLAN
C108	ROUGH GRADING PLAN



## FEMA FIRM MAP

PANEL: 0555H  
MAP NUMBER: 35001C055H



## VICINITY MAP

ZONE ATLAS PAGE: R-16-Z

## GENERAL NOTES

- ALL WORK DETAILED ON THESE PLANS AND PERFORMED UNDER THIS CONTRACT SHALL BE CONSTRUCTED IN ACCORDANCE WITH THE PROJECT SPECIFICATIONS AND THE PROJECT GEOTECHNICAL REPORT, WHERE APPLICABLE, CITY OF ALBUQUERQUE PUBLIC WORKS STANDARDS SHALL APPLY.
- THE CONTRACTOR SHALL ABIDE BY ALL LOCAL, STATE, AND FEDERAL LAWS, RULES AND REGULATIONS WHICH APPLY TO THE CONSTRUCTION OF THESE IMPROVEMENTS, INCLUDING EPA REQUIREMENTS WITH RESPECT TO STORM WATER DISCHARGE.
- PRIOR TO CONSTRUCTION, THE CONTRACTOR SHALL FIELD VERIFY THE HORIZONTAL AND VERTICAL LOCATIONS OF ALL POTENTIAL OBSTRUCTIONS INCLUDING ALL UNDERGROUND UTILITIES. SHOULD A CONFLICT EXIST, THE CONTRACTOR SHALL NOTIFY THE CONSTRUCTION OBSERVER OR ENGINEER SO THAT THE CONFLICT CAN BE RESOLVED WITH A MINIMUM AMOUNT OF DELAY.
- TWO (2) WORKING DAYS PRIOR TO ANY EXCAVATION, THE CONTRACTOR SHALL CONTACT LINE LOCATING SERVICE FOR LOCATION OF EXISTING UTILITIES.
- ALL ELECTRICAL, TELEPHONE, CABLE TV, GAS AND OTHER UTILITY LINES, CABLES, AND APPURTENANCES ENCOUNTERED DURING CONSTRUCTION THAT REQUIRE RELOCATION, SHALL BE COORDINATED WITH THAT UTILITY. THE CONTRACTOR SHALL BE RESPONSIBLE FOR COORDINATION OF ALL NECESSARY UTILITY ADJUSTMENTS. NO ADDITIONAL COMPENSATION WILL BE ALLOWED FOR DELAYS OR INCONVENIENCES CAUSED BY UTILITY COMPANY WORK CREWS. THE CONTRACTOR MAY BE REQUIRED TO RESCHEDULE HIS ACTIVITIES TO ALLOW UTILITY CREWS TO PERFORM THEIR REQUIRED WORK.
- THE CONTRACTOR IS RESPONSIBLE FOR PROTECTING ALL EXISTING UTILITY LINES WITHIN THE CONSTRUCTION AREA. ANY DAMAGE TO EXISTING FACILITIES CAUSED BY CONSTRUCTION ACTIVITY SHALL BE REPAIRED OR REPLACED AT THE CONTRACTOR'S EXPENSE AND APPROVED BY THE CONSTRUCTION OBSERVER.
- CONSTRUCTION ACTIVITY SHALL BE LIMITED TO THE PROPERTY AND/OR PROJECT LIMITS. ANY DAMAGE TO ADJACENT PROPERTIES RESULTING FROM THE CONSTRUCTION PROCESS SHALL BE REPAIRED OR REPLACED AT THE CONTRACTOR'S EXPENSE.
- OVERNIGHT PARKING OF CONSTRUCTION EQUIPMENT SHALL NOT OBSTRUCT DRIVEWAYS OR DESIGNATED TRAFFIC LANES. THE CONTRACTOR SHALL NOT STORE ANY EQUIPMENT OR MATERIAL WITHIN THE PUBLIC RIGHT-OF-WAY.
- THE CONTRACTOR SHALL OBTAIN ALL THE NECESSARY PERMITS FOR THE PROJECT PRIOR TO COMMENCING CONSTRUCTION (I.E., BARRICADING, TOPSOIL DISTURBANCE, EXCAVATION PERMITS, EPA STORM WATER PERMITS, ETC.).
- ALL PROPERTY CORNERS DESTROYED DURING CONSTRUCTION SHALL BE REPLACED AT THE CONTRACTOR'S EXPENSE. ALL PROPERTY CORNERS MUST BE RESET BY A REGISTERED LAND SURVEYOR.
- THE CONTRACTOR SHALL PREPARE A CONSTRUCTION TRAFFIC CONTROL AND SIGNING PLAN AND OBTAIN APPROVAL OF SUCH PLAN FROM THE CITY OF ALBUQUERQUE, TRAFFIC ENGINEERING DEPARTMENT, PRIOR TO BEGINNING ANY CONSTRUCTION WORK ON OR ADJACENT TO EXISTING STREETS.
- ALL BARRICADES AND CONSTRUCTION SIGNING SHALL CONFORM TO APPLICABLE SECTIONS OF THE 'MANUAL ON UNIFORM TRAFFIC CONTROL DEVICES' (MUTCD), US DEPARTMENT OF TRANSPORTATION, LATEST EDITION.
- THE CONTRACTOR SHALL MAINTAIN ALL CONSTRUCTION BARRICADES AND SIGNING AT ALL TIMES.
- THE CONTRACTOR SHALL TAKE ALL STEPS NECESSARY TO CONFORM WITH EPA REQUIREMENTS, INCLUDING COMPLIANCE WITH NPDES PHASE 2 REQUIREMENTS.

NOTE: THESE PLANS ARE FOR ROUGH GRADING BIDDING PURPOSES ONLY. THE REMAINDER OF THE SITE IMPROVEMENTS ARE SHOWN FOR INFORMATION PURPOSES ONLY.

## GRADING NOTES

- EXCEPT AS PROVIDED HEREIN, GRADING SHALL BE PERFORMED AT THE ELEVATIONS AND IN ACCORDANCE WITH THE DETAILS SHOWN ON THIS PLAN.
- THE COST FOR REQUIRED CONSTRUCTION DUST AND EROSION CONTROL MEASURES SHALL BE INCIDENTAL TO THE PROJECT COST.
- ALL WORK RELATIVE TO FOUNDATION CONSTRUCTION, SITE PREPARATION, AND PAVEMENT INSTALLATION, AS SHOWN ON THIS PLAN, SHALL BE CONSTRUCTED IN ACCORDANCE WITH THE 'FINAL GEOTECHNICAL ENGINEERING REPORT' PREPARED BY TBD, DATED XXXXXXXXXX. ALL OTHER WORK SHALL, UNLESS OTHERWISE STATED OR PROVIDED FOR HEREON, BE CONSTRUCTED IN ACCORDANCE WITH THE PROJECT, (FIRST PRIORITY) SPECIFICATIONS, AND/OR THE CITY OF ALBUQUERQUE (COA) STANDARD SPECIFICATIONS FOR PUBLIC WORKS (SECOND PRIORITY).
- EARTH SLOPES SHALL NOT EXCEED 3 HORIZONTAL TO 1 VERTICAL UNLESS SHOWN OTHERWISE.
- IT IS THE INTENT OF THESE PLANS THAT THIS CONTRACTOR SHALL NOT PERFORM ANY WORK OUTSIDE OF THE PROPERTY BOUNDARIES EXCEPT AS REQUIRED BY THIS PLAN.
- THE CONTRACTOR IS TO ENSURE THAT NO SOIL ERODES FROM THE SITE ONTO ADJACENT PROPERTY OR PUBLIC RIGHT-OF-WAY.
- A DISPOSAL SITE FOR ANY & ALL EXCESS EXCAVATION MATERIAL, AND UNSUITABLE MATERIAL AND/OR A BORROW SITE CONTAINING ACCEPTABLE FILL MATERIAL SHALL BE OBTAINED BY THE CONTRACTOR IN COMPLIANCE WITH APPLICABLE ENVIRONMENTAL REGULATIONS AND APPROVED BY THE OBSERVER. ALL COSTS INCURRED IN OBTAINING A DISPOSAL OR BORROW SITE AND HAUL TO OR FROM SHALL BE CONSIDERED INCIDENTAL TO THE PROJECT AND NO SEPARATE MEASUREMENT OR PAYMENT SHALL BE MADE.
- PAD ELEVATION SHALL BE +/- 0.05' FROM BUILDING PLAN ELEVATION.
- VERIFY ALL ELEVATIONS SHOWN ON PLAN FROM BASIS OF ELEVATION CONTROL STATION PRIOR TO BEGINNING CONSTRUCTION.

## ROUGH GRADING NOTES

- GRADES SHOWN ON THE ROUGH GRADING PLAN REPRESENT FINISHED GRADES. FINISHED GRADES SHALL BE ADJUSTED TO ACCOUNT FOR PAVEMENT SECTION AND BUILDING FLOOR SLAB.
- CONTRACTOR SHALL PROVIDE CERTIFIED FINISHED GRADE, INCLUDING STOCKPILES (HARD COPY AND ELECTRONIC FORMAT - AUTOCAD PREFERRED) FROM A LICENSED SURVEYOR. TOPOGRAPHIC ACCURACY SHALL BE AS REQUIRED TO PROVIDE 1' CONTOUR INTERVAL.
- FOR THE BUILDING AREA, OVER EXCAVATION AND BACKFILL SHALL OCCUR PER GEOTECHNICAL REPORT.
- CONTRACTOR IS RESPONSIBLE FOR SWPPP PREPARATION AND IMPLEMENTATION.
- FINISHED GRADE FOR PAVEMENT AREAS SHALL BE LEFT AS FOLLOWS:
  - A. SIDEWALKS: 4" BELOW PAVEMENT SURFACE ELEVATIONS SHOWN ON GRADING PLAN.
  - B. AUTOMOBILE PARKING AND DRIVE LANES: PER LIGHT DUTY PAVEMENT SECTION.
  - C. HEAVY TRUCK TRAFFIC (INCLUDING DELIVERY & TRASH TRUCKS): PER HEAVY DUTY PAVEMENT SECTION.
  - D. FLOOR SLAB: BELOW FINISHED FLOOR PER STRUCTURAL PLANS.

## PROJECT BENCH MARK

CITY OF ALBUQUERQUE SURVEY CONTROL MONUMENT "14-L17 1984"  
3 1/4" ALUMINUM DISC SET FLUSH IN THE SIDEWALK  
GEOGRAPHIC POSITION (NAD 1983)  
NM STATE PLANE COORDINATES  
N= 1480200.281 USR E= 1534391.165 USR  
GROUND-TO-GRID FACTOR = 0.999862355  
NAVD 1988 ELEVATION= 5319.339 USR

DEKKER  
PERICH  
SABATINI

ARCHITECTURE  
DESIGN  
INSPIRATION

Bohannon & Huston  
www.bhinc.com 800.877.5332

ARCHITECT

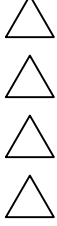


ENGINEER

PROJECT

ABQ Studios Expansion  
SITE - NORTH  
5650 UNIVERSITY BLVD SE  
ALBUQUERQUE, NM 87106

REVISIONS



DRAWN BY	KH
REVIEWED BY	OB
DATE	7/13/2021
PROJECT NO.	20-0072.008
DRAWING NAME	

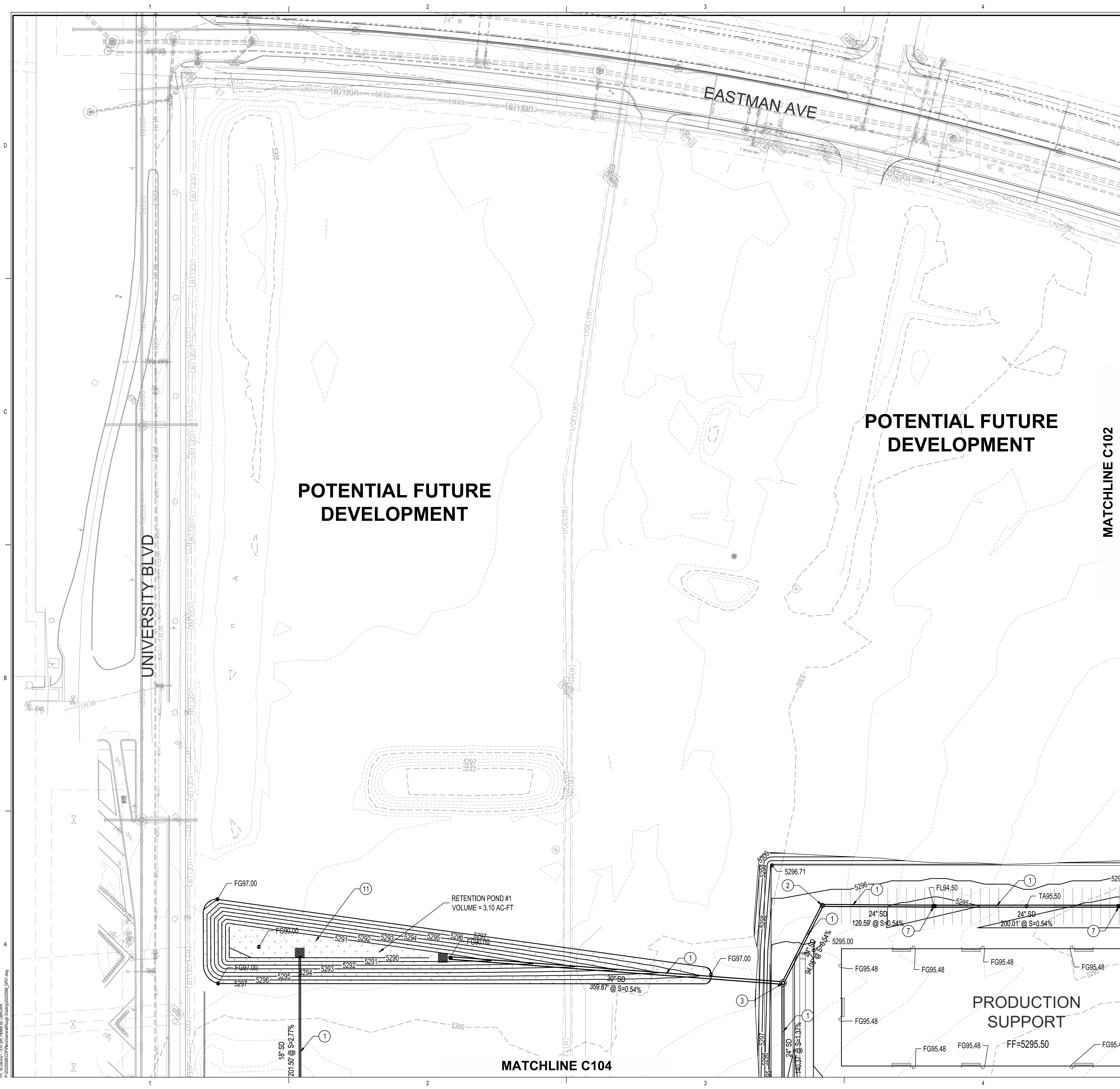
OVERALL ROUGH  
GRADING PLAN

SHEET NO.

C100

OF





- GRADING KEYED NOTES
1.

INSTALL STORM DRAIN PIPE. SEE PLAN FOR SIZE & SLOPE.
2.

CONSTRUCT 4' DIA TYPE "E" STORM DRAIN MANHOLE PER COA STD DWG 2101.
3.

CONSTRUCT 6' DIA TYPE "E" STORM DRAIN MANHOLE PER COA STD DWG 2101.
4.

CONSTRUCT TYPE "A" SINGLE GRATE STORM DRAIN INLET PER COA STD DWG 2201.
5.

CONSTRUCT TYPE "C" SINGLE GRATE STORM DRAIN INLET PER COA STD DWG 2205.
6.

CONSTRUCT TYPE "C" DOUBLE GRATE STORM DRAININLET PER COA STD DWG 2205.
7.

CONSTRUCT TYPE "D" SINGLE GRATE STORM DRAIN INLET PER COA STD DWG 2206.
8.

CONSTRUCT TYPE "D" DOUBLE GRATE STORM DRAIN INLET PER COA STD DWG 2206.
9.

CONSTRUCT RETAINING WALL.
10.

INSTALL STORM DRAIN PIPE TO WITHIN 5' OF BUILDING. SEE PLUMBING PLANS FOR CONTINUATION.
11.

CONSTRUCT RETENTION POND.
12.

FUTURE RETENTION POND.
13.

INSTALL PRE-MANUFACTURED STORM DRAIN FITTING, SIZE(S) PER PLAN.
14.

EXISTING UTILITY TO REMAIN, PROTECT IN PLACE.
15.

CONNECT TO EXISTING STORM DRAIN INFRASTRUCTURE.

LEGEND

	PROPERTY LINE
	EXISTING EASEMENT
	PROPOSED INDEX CONTOUR
	PROPOSED INTERMEDIATE CONTOUR
	EXISTING INDEX CONTOUR
	EXISTING INTERMEDIATE CONTOUR
	PROPOSED DRAINAGE SWALE
	DIRECTION OF FLOW
	WATER BLOCK/GRADE BREAK
	PROPOSED STORM DRAIN MANHOLE
	PROPOSED STORM DRAIN INLETS
	PROPOSED STORM DRAIN CAP
	PROPOSED WATER LINE
	PROPOSED SANITARY SEWER LINE
	PROPOSED SANITARY SEWER FORCE MAIN LINE
	PROPOSED STORM DRAIN LINE
	PROPOSED RETENTION POND

NOTE: THESE PLANS ARE FOR ROUGH GRADING BIDDING PURPOSES ONLY. THE REMAINDER OF THE SITE IMPROVEMENTS ARE SHOWN FOR INFORMATION PURPOSES ONLY.

SITE KEY MAP

DEKKER  
PERICH  
SABATINI

ARCHITECTURE  
DESIGN  
INSPIRATION

Bohannon & Huston  
www.bhinc.com 800.877.5332

ARCHITECT

ENGINEER

PROJECT

ABQ Studios Expansion  
SITE - NORTH  
5650 UNIVERSITY BLVD SE  
ALBUQUERQUE, NM 87106

REVISIONS

△

△

△

△

DRAWN BY

KH

REVIEWED BY

OB

DATE

7/13/2021

PROJECT NO.

20-0072.008

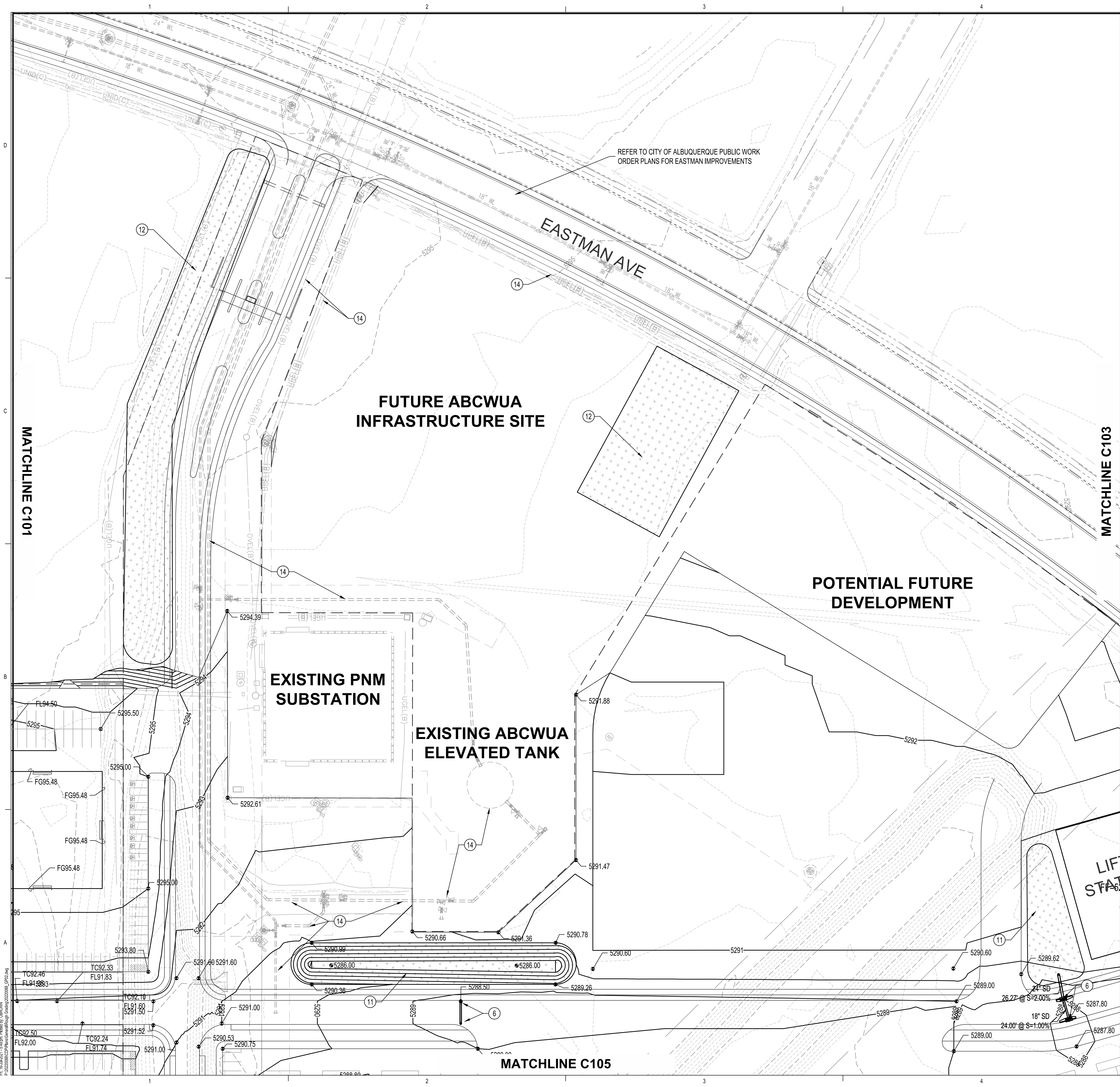
DRAWING NAME

ROUGH GRADING  
PLAN

SHEET NO.  
C101

OF



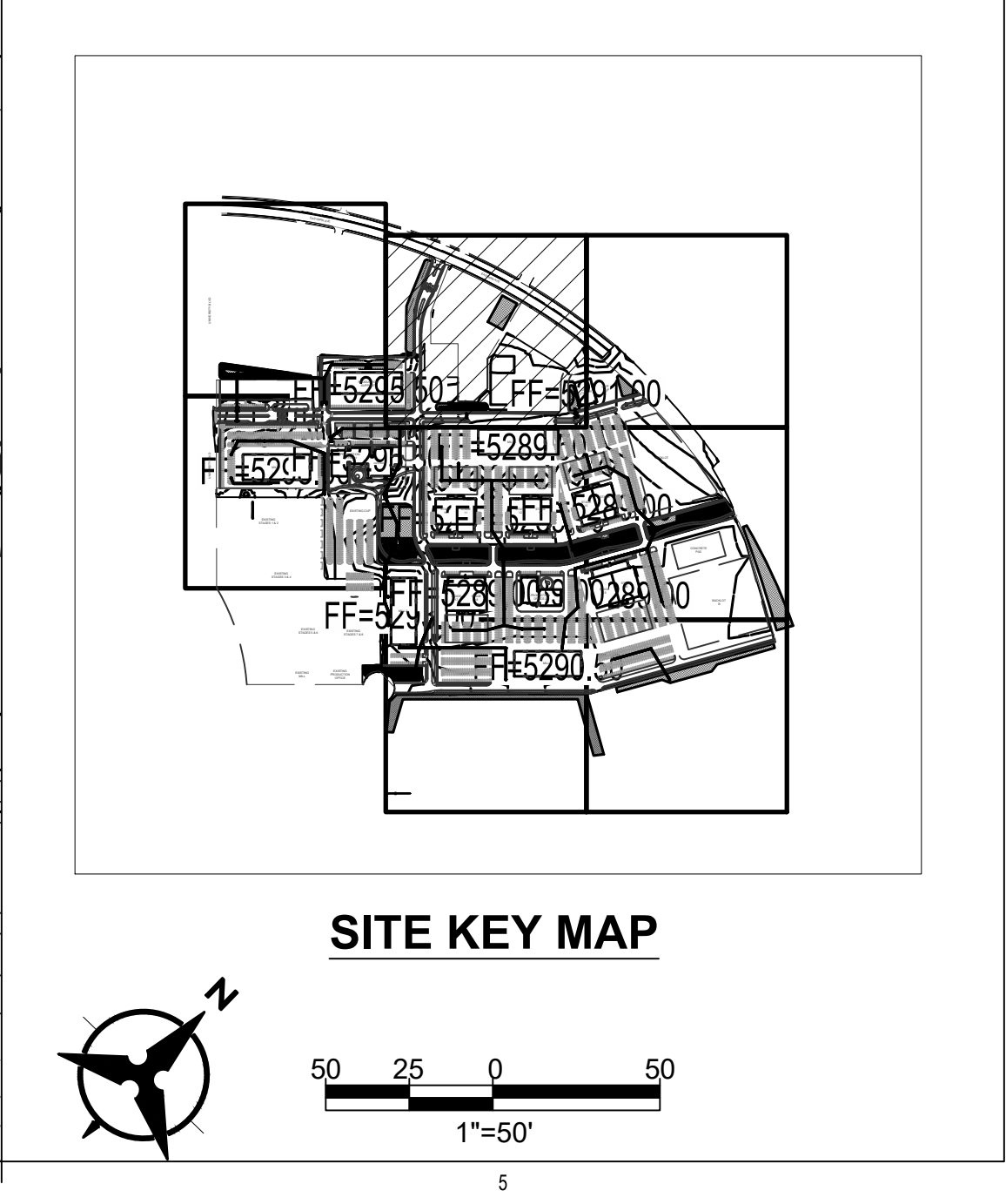


- ### GRADING KEYED NOTES
1. INSTALL STORM DRAIN PIPE. SEE PLAN FOR SIZE & SLOPE.
  2. CONSTRUCT 4' DIA TYPE "E" STORM DRAIN MANHOLE PER COA STD DWG 2101.
  3. CONSTRUCT 6' DIA TYPE "E" STORM DRAIN MANHOLE PER COA STD DWG 2101.
  4. CONSTRUCT TYPE "A" SINGLE GRATE STORM DRAIN INLET PER COA STD DWG 2201.
  5. CONSTRUCT TYPE "C" SINGLE GRATE STORM DRAIN INLET PER COA STD DWG 2205.
  6. CONSTRUCT TYPE "C" DOUBLE GRATE STORM DRAIN INLET PER COA STD DWG 2205.
  7. CONSTRUCT TYPE "D" SINGLE GRATE STORM DRAIN INLET PER COA STD DWG 2206.
  8. CONSTRUCT TYPE "D" DOUBLE GRATE STORM DRAIN INLET PER COA STD DWG 2206.
  9. CONSTRUCT RETAINING WALL.
  10. INSTALL STORM DRAIN PIPE TO WITHIN 5' OF BUILDING. SEE PLUMBING PLANS FOR CONTINUATION.
  11. CONSTRUCT RETENTION POND.
  12. FUTURE RETENTION POND.
  13. INSTALL PRE-MANUFACTURED STORM DRAIN FITTING, SIZE(S) PER PLAN.
  14. EXISTING UTILITY TO REMAIN, PROTECT IN PLACE.
  15. CONNECT TO EXISTING STORM DRAIN INFRASTRUCTURE.

### LEGEND

	PROPERTY LINE
	EXISTING EASEMENT
	PROPOSED INDEX CONTOUR
	PROPOSED INTERMEDIATE CONTOUR
	EXISTING INDEX CONTOUR
	EXISTING INTERMEDIATE CONTOUR
	PROPOSED DRAINAGE SWALE
	DIRECTION OF FLOW
	WATER BLOCK/GRADE BREAK
	PROPOSED STORM DRAIN MANHOLE
	PROPOSED STORM DRAIN INLETS
	PROPOSED STORM DRAIN CAP
	PROPOSED WATER LINE
	PROPOSED SANITARY SEWER LINE
	PROPOSED SANITARY SEWER FORCE MAIN LINE
	PROPOSED STORM DRAIN LINE
	PROPOSED RETENTION POND

NOTE: THESE PLANS ARE FOR ROUGH GRADING BIDDING PURPOSES ONLY. THE REMAINDER OF THE SITE IMPROVEMENTS ARE SHOWN FOR INFORMATION PURPOSES ONLY.



DEKKER  
PERICH  
SABATINI

ARCHITECTURE  
DESIGN  
INSPIRATION

Bohannon Huston  
www.bhinc.com 800.877.5332

ARCHITECT

ENGINEER

PROJECT

ABQ Studios Expansion  
SITE - NORTH  
5650 UNIVERSITY BLVD SE  
ALBUQUERQUE, NM 87106

REVISIONS

△

△

△

△

DRAWN BY KH

REVIEWED BY OB

DATE 7/13/2021

PROJECT NO. 20-0072.008

DRAWING NAME

ROUGH GRADING  
PLAN

SHEET NO. C102

OF





GRADING KEYED NOTES

1. INSTALL STORM DRAIN PIPE. SEE PLAN FOR SIZE & SLOPE.

2. CONSTRUCT 4' DIA TYPE "E" STORM DRAIN MANHOLE PER COA STD DWG 2101.

3. CONSTRUCT 6' DIA TYPE "E" STORM DRAIN MANHOLE PER COA STD DWG 2101.

4. CONSTRUCT TYPE "A" SINGLE GRATE STORM DRAIN INLET PER COA STD DWG 2201.

5. CONSTRUCT TYPE "C" SINGLE GRATE STORM DRAIN INLET PER COA STD DWG 2205.

6. CONSTRUCT TYPE "C" DOUBLE GRATE STORM DRAININLET PER COA STD DWG 2205.

7. CONSTRUCT TYPE "D" SINGLE GRATE STORM DRAIN INLET PER COA STD DWG 2206.

8. CONSTRUCT TYPE "D" DOUBLE GRATE STORM DRAIN INLET PER COA STD DWG 2206.

9. CONSTRUCT RETAINING WALL.

10. INSTALL STORM DRAIN PIPE TO WITHIN 5' OF BUILDING. SEE PLUMBING PLANS FOR CONTINUATION.

11. CONSTRUCT RETENTION POND.

12. FUTURE RETENTION POND.

13. INSTALL PRE-MANUFACTURED STORM DRAIN FITTING, SIZE(S) PER PLAN.

14. EXISTING UTILITY TO REMAIN, PROTECT IN PLACE.

15. CONNECT TO EXISTING STORM DRAIN INFRASTRUCTURE.

LEGEND

PROPERTY LINE

EXISTING EASEMENT

5320

PROPOSED INDEX CONTOUR

5319

PROPOSED INTERMEDIATE CONTOUR

5320

EXISTING INDEX CONTOUR

5319

EXISTING INTERMEDIATE CONTOUR

PROPOSED DRAINAGE SWALE

DIRECTION OF FLOW

WATER BLOCK/GRADE BREAK

PROPOSED STORM DRAIN MANHOLE

PROPOSED STORM DRAIN INLETS

PROPOSED STORM DRAIN CAP

W

PROPOSED WATER LINE

SS

PROPOSED SANITARY SEWER LINE

FM

PROPOSED SANITARY SEWER FORCE MAIN LINE

SD

PROPOSED STORM DRAIN LINE

PROPOSED RETENTION POND

NOTE: THESE PLANS ARE FOR ROUGH GRADING BIDDING PURPOSES ONLY. THE REMAINDER OF THE SITE IMPROVEMENTS ARE SHOWN FOR INFORMATION PURPOSES ONLY.

SITE KEY MAP

1"=50'

DEKKER PERICH SABATINI

ARCHITECTURE DESIGN INSPIRATION

Bohannon & Huston

ARCHITECT

QUIN MICHAEL BROWN

NEW MEXICO

23696

7-16-2021

PROFESSIONAL ENGINEER

ENGINEER

ABQ Studios Expansion

SITE - NORTH

5650 UNIVERSITY BLVD SE

ALBUQUERQUE, NM 87106

PROJECT

REVISIONS

DRAWN BY

KH

REVIEWED BY

OB

DATE

7/13/2021

PROJECT NO.

20-0072.008

DRAWING NAME

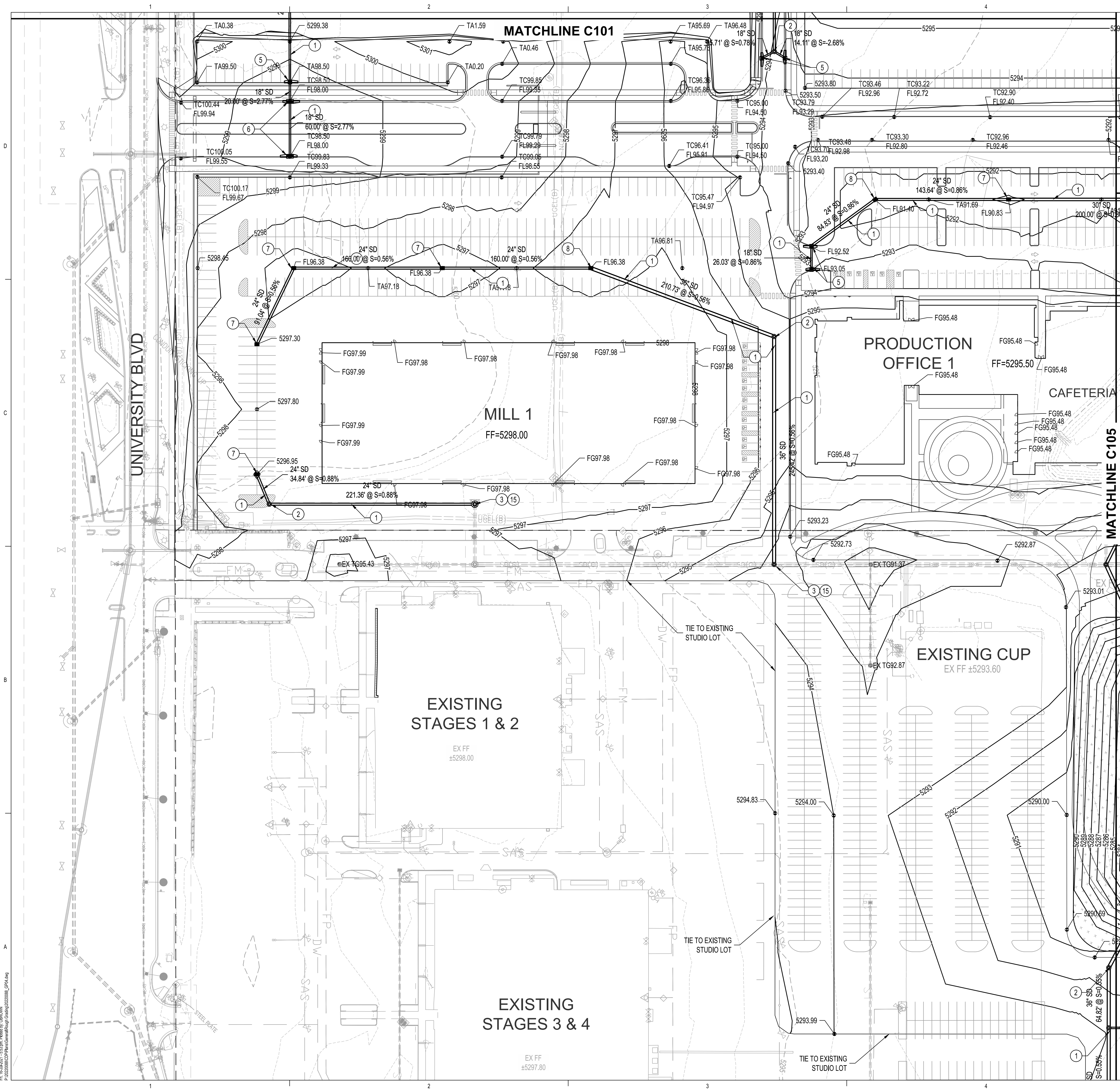
ROUGH GRADING PLAN

SHEET NO.

C103

OF





- ### GRADING KEYED NOTES
- INSTALL STORM DRAIN PIPE. SEE PLAN FOR SIZE & SLOPE.
  - CONSTRUCT 4' DIA TYPE "E" STORM DRAIN MANHOLE PER COA STD DWG 2101.
  - CONSTRUCT 6' DIA TYPE "E" STORM DRAIN MANHOLE PER COA STD DWG 2101.
  - CONSTRUCT TYPE "A" SINGLE GRATE STORM DRAIN INLET PER COA STD DWG 2201.
  - CONSTRUCT TYPE "C" SINGLE GRATE STORM DRAIN INLET PER COA STD DWG 2205.
  - CONSTRUCT TYPE "C" DOUBLE GRATE STORM DRAIN INLET PER COA STD DWG 2205.
  - CONSTRUCT TYPE "D" SINGLE GRATE STORM DRAIN INLET PER COA STD DWG 2206.
  - CONSTRUCT TYPE "D" DOUBLE GRATE STORM DRAIN INLET PER COA STD DWG 2206.
  - CONSTRUCT RETAINING WALL.
  - INSTALL STORM DRAIN PIPE TO WITHIN 5' OF BUILDING. SEE PLUMBING PLANS FOR CONTINUATION.
  - CONSTRUCT RETENTION POND.
  - FUTURE RETENTION POND.
  - INSTALL PRE-MANUFACTURED STORM DRAIN FITTING, SIZE(S) PER PLAN.
  - EXISTING UTILITY TO REMAIN, PROTECT IN PLACE.
  - CONNECT TO EXISTING STORM DRAIN INFRASTRUCTURE.

### LEGEND

	PROPERTY LINE
	EXISTING EASEMENT
	PROPOSED INDEX CONTOUR
	PROPOSED INTERMEDIATE CONTOUR
	EXISTING INDEX CONTOUR
	EXISTING INTERMEDIATE CONTOUR
	PROPOSED DRAINAGE SWALE
	DIRECTION OF FLOW
	WATER BLOCK/GRADE BREAK
	PROPOSED STORM DRAIN MANHOLE
	PROPOSED STORM DRAIN INLETS
	PROPOSED STORM DRAIN CAP
	PROPOSED WATER LINE
	PROPOSED SANITARY SEWER LINE
	PROPOSED SANITARY SEWER FORCE MAIN LINE
	PROPOSED STORM DRAIN LINE
	PROPOSED RETENTION POND

NOTE: THESE PLANS ARE FOR ROUGH GRADING BIDDING PURPOSES ONLY. THE REMAINDER OF THE SITE IMPROVEMENTS ARE SHOWN FOR INFORMATION PURPOSES ONLY.

### SITE KEY MAP

50 25 0 50  
1"=50'

**DEKKER  
PERICH  
SABATINI**

ARCHITECTURE  
DESIGN  
INSPIRATION

**Bohannon** **Huston**  
www.bhinc.com 800.877.5332

ARCHITECT

ENGINEER

PROJECT

ABQ Studios Expansion  
SITE - NORTH  
5650 UNIVERSITY BLVD SE  
ALBUQUERQUE, NM 87106

REVISIONS

DRAWN BY KH

REVIEWED BY OB

DATE 7/13/2021

PROJECT NO. 20-0072.008

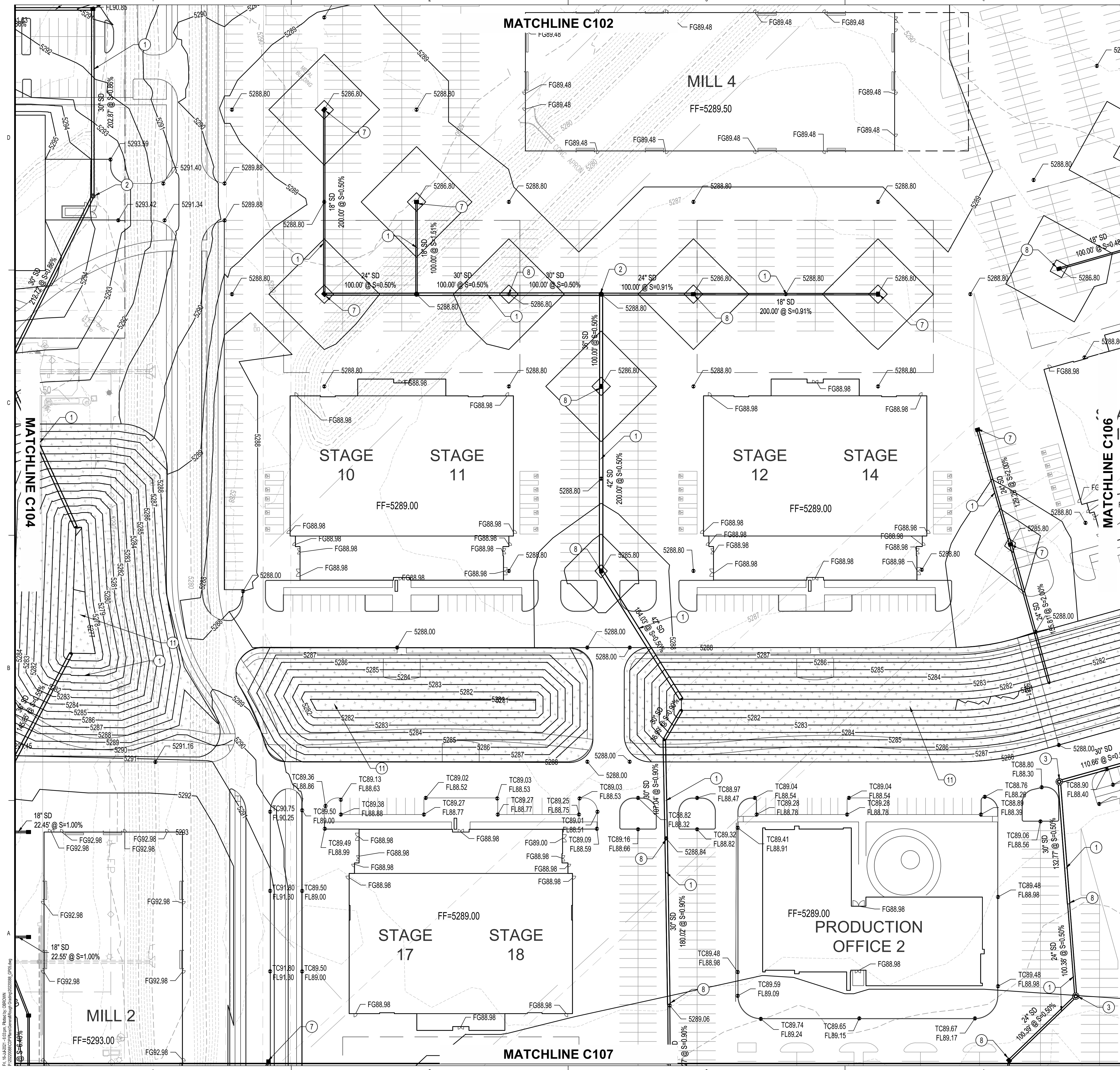
DRAWING NAME

ROUGH GRADING  
PLAN

SHEET NO. **C104**

OF



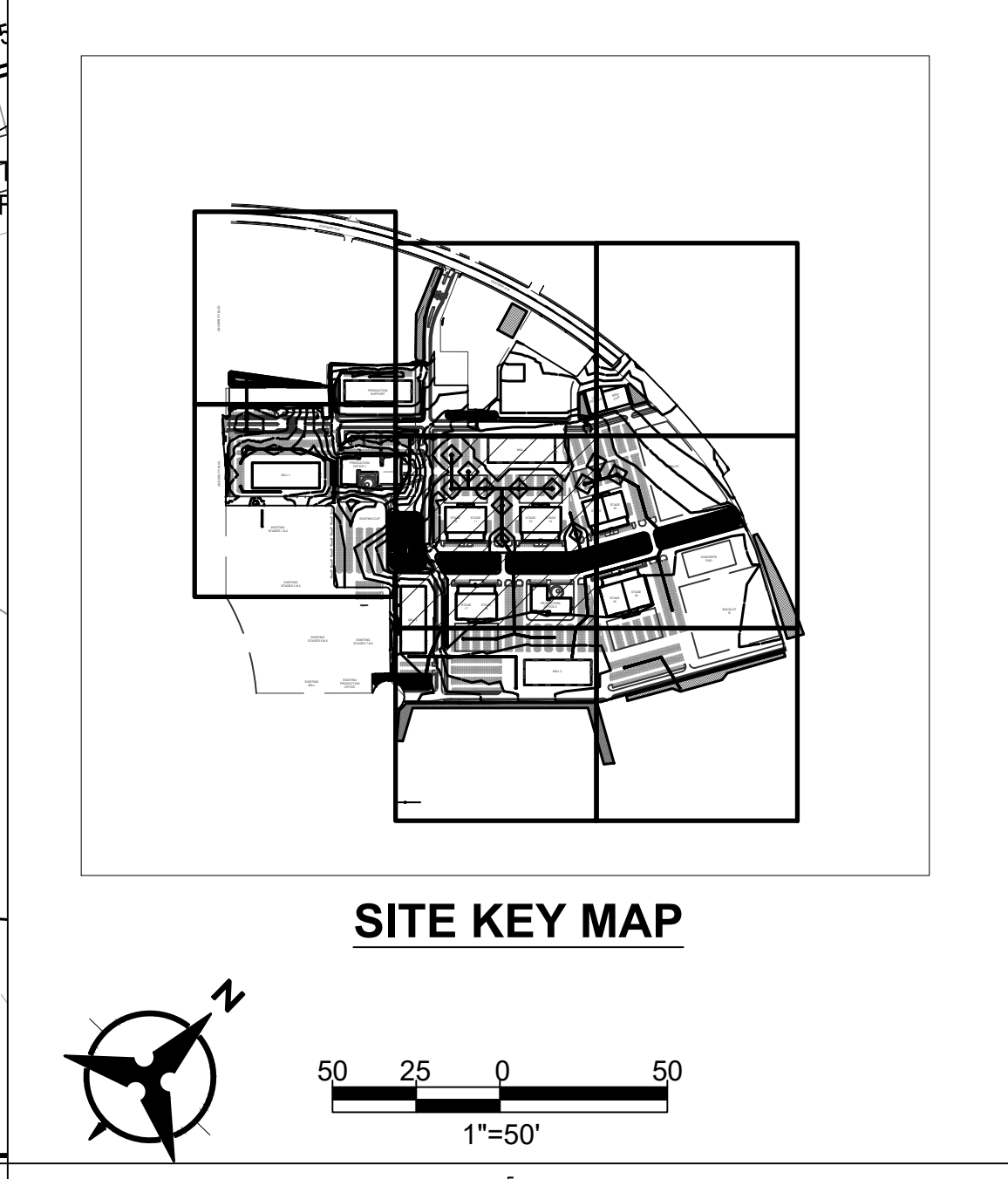


- ### GRADING KEYED NOTES
1. INSTALL STORM DRAIN PIPE. SEE PLAN FOR SIZE & SLOPE.
  2. CONSTRUCT 4' DIA TYPE "E" STORM DRAIN MANHOLE PER COA STD DWG 2101.
  3. CONSTRUCT 6' DIA TYPE "E" STORM DRAIN MANHOLE PER COA STD DWG 2101.
  4. CONSTRUCT TYPE "A" SINGLE GRATE STORM DRAIN INLET PER COA STD DWG 2201.
  5. CONSTRUCT TYPE "C" SINGLE GRATE STORM DRAIN INLET PER COA STD DWG 2205.
  6. CONSTRUCT TYPE "C" DOUBLE GRATE STORM DRAIN INLET PER COA STD DWG 2205.
  7. CONSTRUCT TYPE "D" SINGLE GRATE STORM DRAIN INLET PER COA STD DWG 2206.
  8. CONSTRUCT TYPE "D" DOUBLE GRATE STORM DRAIN INLET PER COA STD DWG 2206.
  9. CONSTRUCT RETAINING WALL.
  10. INSTALL STORM DRAIN PIPE TO WITHIN 5' OF BUILDING. SEE PLUMBING PLANS FOR CONTINUATION.
  11. CONSTRUCT RETENTION POND.
  12. FUTURE RETENTION POND.
  13. INSTALL PRE-MANUFACTURED STORM DRAIN FITTING, SIZE(S) PER PLAN.
  14. EXISTING UTILITY TO REMAIN, PROTECT IN PLACE.
  15. CONNECT TO EXISTING STORM DRAIN INFRASTRUCTURE.

### LEGEND

	PROPERTY LINE
	EXISTING EASEMENT
	PROPOSED INDEX CONTOUR
	PROPOSED INTERMEDIATE CONTOUR
	EXISTING INDEX CONTOUR
	EXISTING INTERMEDIATE CONTOUR
	PROPOSED DRAINAGE SWALE
	DIRECTION OF FLOW
	WATER BLOCK/GRADE BREAK
	PROPOSED STORM DRAIN MANHOLE
	PROPOSED STORM DRAIN INLETS
	PROPOSED STORM DRAIN CAP
	PROPOSED WATER LINE
	PROPOSED SANITARY SEWER LINE
	PROPOSED SANITARY SEWER FORCE MAIN LINE
	PROPOSED STORM DRAIN LINE
	PROPOSED RETENTION POND

NOTE: THESE PLANS ARE FOR ROUGH GRADING BIDDING PURPOSES ONLY. THE REMAINDER OF THE SITE IMPROVEMENTS ARE SHOWN FOR INFORMATION PURPOSES ONLY.



DEKKER  
PERICH  
SABATINI

ARCHITECTURE  
DESIGN  
INSPIRATION

Bohannon & Huston  
www.bhinc.com 800.877.5332

ARCHITECT

ENGINEER

PROJECT

ABQ Studios Expansion  
SITE - NORTH  
5650 UNIVERSITY BLVD SE  
ALBUQUERQUE, NM 87106

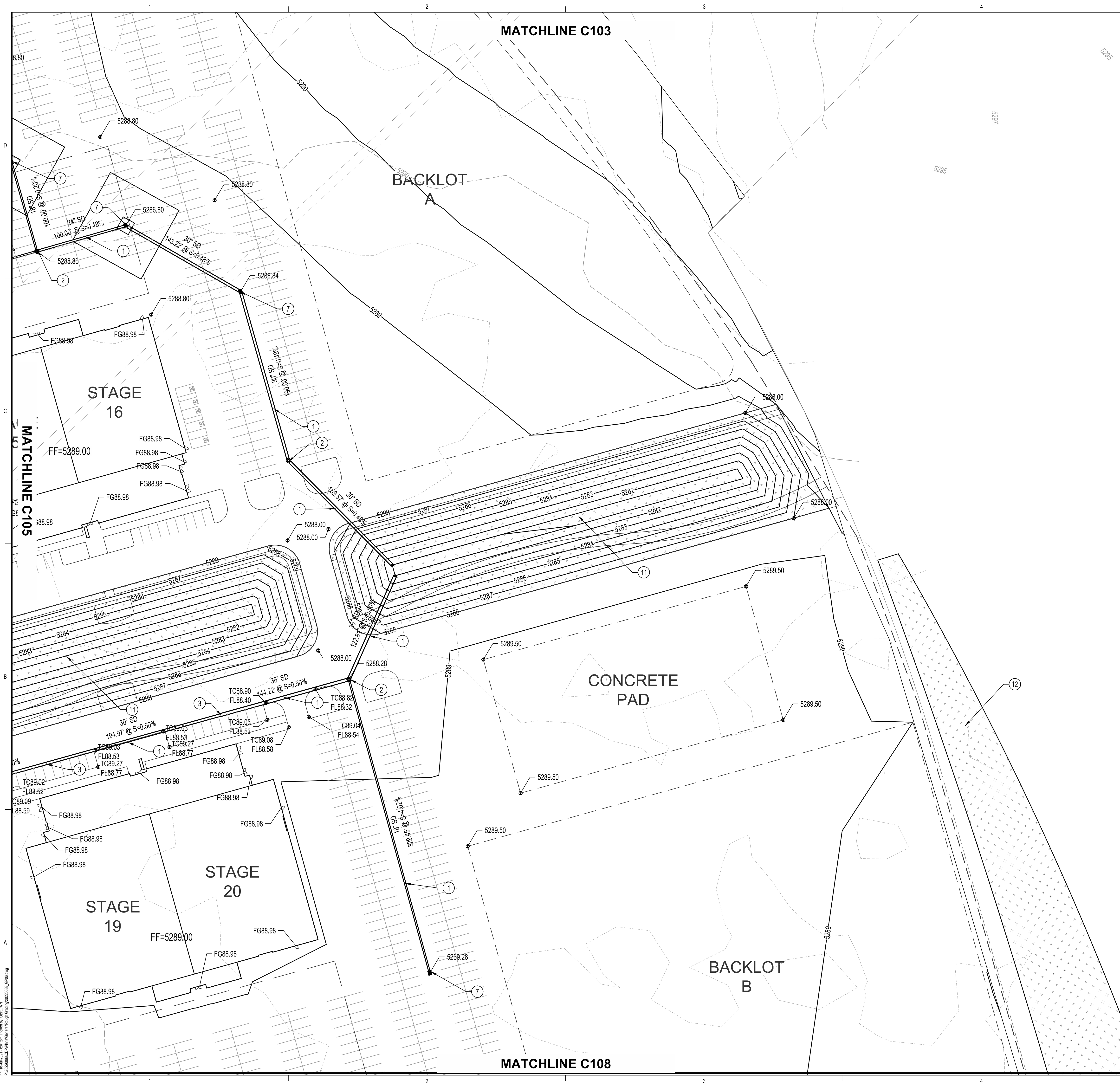
REVISIONS

DRAWN BY KH  
REVIEWED BY OB  
DATE 7/13/2021  
PROJECT NO. 20-0072.008  
DRAWING NAME

ROUGH GRADING  
PLAN

SHEET NO. C105 OF





- ### GRADING KEYED NOTES
1. INSTALL STORM DRAIN PIPE. SEE PLAN FOR SIZE & SLOPE.
  2. CONSTRUCT 4' DIA TYPE "E" STORM DRAIN MANHOLE PER COA STD DWG 2101.
  3. CONSTRUCT 6' DIA TYPE "E" STORM DRAIN MANHOLE PER COA STD DWG 2101.
  4. CONSTRUCT TYPE "A" SINGLE GRATE STORM DRAIN INLET PER COA STD DWG 2201.
  5. CONSTRUCT TYPE "C" SINGLE GRATE STORM DRAIN INLET PER COA STD DWG 2205.
  6. CONSTRUCT TYPE "C" DOUBLE GRATE STORM DRAININLET PER COA STD DWG 2205.
  7. CONSTRUCT TYPE "D" SINGLE GRATE STORM DRAIN INLET PER COA STD DWG 2206.
  8. CONSTRUCT TYPE "D" DOUBLE GRATE STORM DRAIN INLET PER COA STD DWG 2206.
  9. CONSTRUCT RETAINING WALL.
  10. INSTALL STORM DRAIN PIPE TO WITHIN 5' OF BUILDING. SEE PLUMBING PLANS FOR CONTINUATION.
  11. CONSTRUCT RETENTION POND.
  12. FUTURE RETENTION POND.
  13. INSTALL PRE-MANUFACTURED STORM DRAIN FITTING, SIZE(S) PER PLAN.
  14. EXISTING UTILITY TO REMAIN, PROTECT IN PLACE.
  15. CONNECT TO EXISTING STORM DRAIN INFRASTRUCTURE.

### LEGEND

	PROPERTY LINE
	EXISTING EASEMENT
	PROPOSED INDEX CONTOUR
	PROPOSED INTERMEDIATE CONTOUR
	EXISTING INDEX CONTOUR
	EXISTING INTERMEDIATE CONTOUR
	PROPOSED DRAINAGE SWALE
	DIRECTION OF FLOW
	WATER BLOCK/GRADE BREAK
	PROPOSED STORM DRAIN MANHOLE
	PROPOSED STORM DRAIN INLETS
	PROPOSED STORM DRAIN CAP
	PROPOSED WATER LINE
	PROPOSED SANITARY SEWER LINE
	PROPOSED SANITARY SEWER FORCE MAIN LINE
	PROPOSED STORM DRAIN LINE
	PROPOSED RETENTION POND

NOTE: THESE PLANS ARE FOR ROUGH GRADING BIDDING PURPOSES ONLY. THE REMAINDER OF THE SITE IMPROVEMENTS ARE SHOWN FOR INFORMATION PURPOSES ONLY.

**SITE KEY MAP**

**DEKKER PERICH SABATINI**

ARCHITECTURE  
DESIGN  
INSPIRATION

ARCHITECT

ENGINEER

PROJECT

ABQ Studios Expansion  
SITE - NORTH  
5650 UNIVERSITY BLVD SE  
ALBUQUERQUE, NM 87106

REVISIONS

DRAWN BY

KH

REVIEWED BY

OB

DATE

7/13/2021

PROJECT NO.

20-0072.008

DRAWING NAME

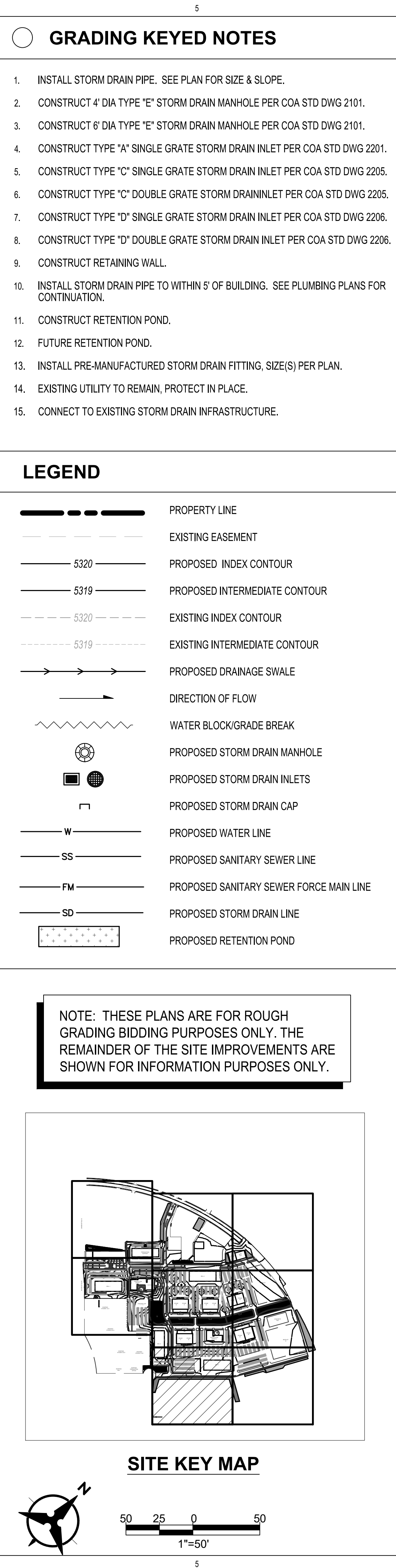
ROUGH GRADING  
PLAN

SHEET NO.

C106

OF

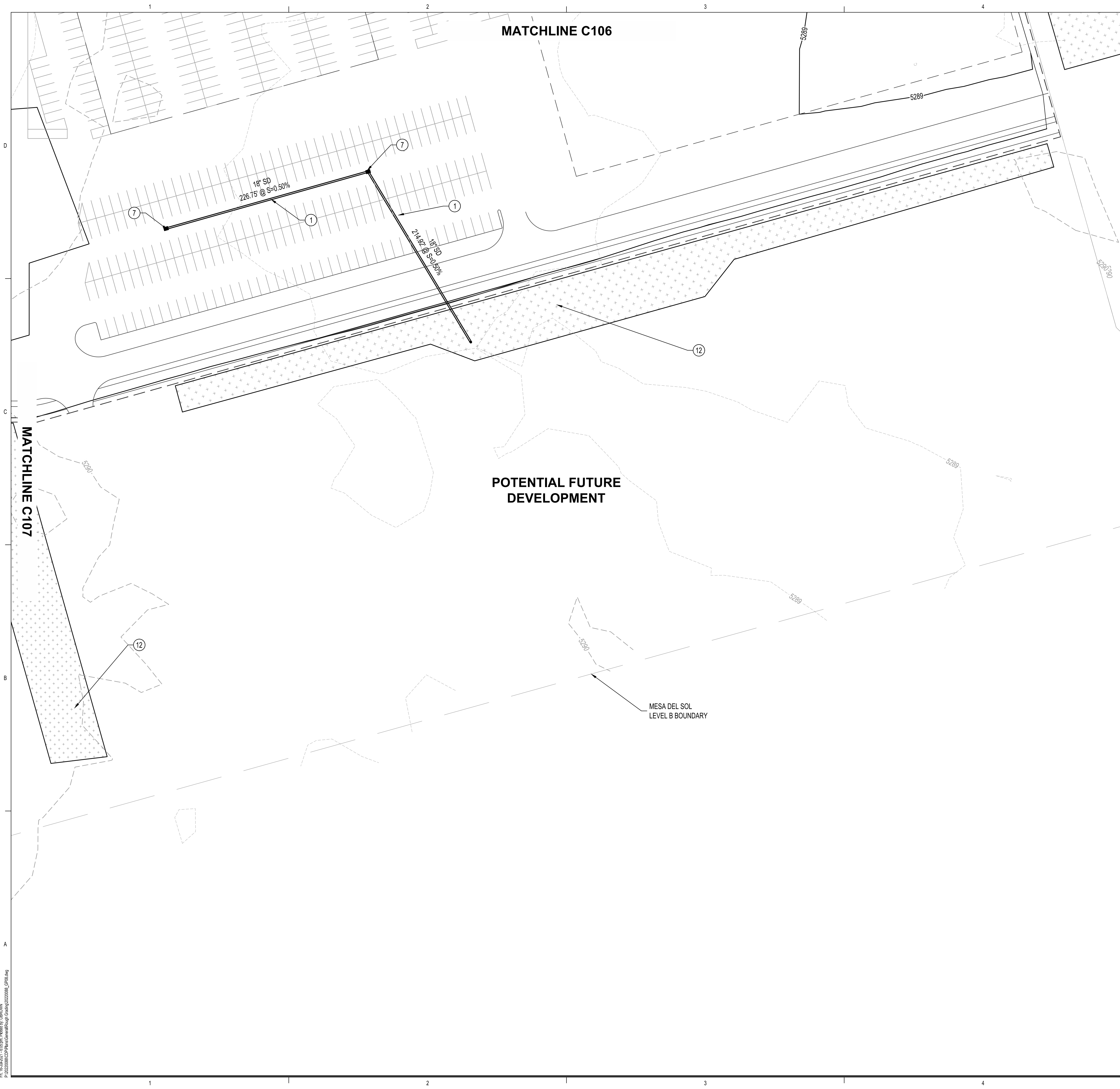




**ABQ Studios Expansion**  
**SITE - NORTH**  
5650 UNIVERSITY BLVD SE  
ALBUQUERQUE, NM 87106

DF





GRADING KEYED NOTES

1. INSTALL STORM DRAIN PIPE. SEE PLAN FOR SIZE & SLOPE.

2. CONSTRUCT 4' DIA TYPE "E" STORM DRAIN MANHOLE PER COA STD DWG 2101.

3. CONSTRUCT 6' DIA TYPE "E" STORM DRAIN MANHOLE PER COA STD DWG 2101.

4. CONSTRUCT TYPE "A" SINGLE GRATE STORM DRAIN INLET PER COA STD DWG 2201.

5. CONSTRUCT TYPE "C" SINGLE GRATE STORM DRAIN INLET PER COA STD DWG 2205.

6. CONSTRUCT TYPE "C" DOUBLE GRATE STORM DRAININLET PER COA STD DWG 2205.

7. CONSTRUCT TYPE "D" SINGLE GRATE STORM DRAIN INLET PER COA STD DWG 2206.

8. CONSTRUCT TYPE "D" DOUBLE GRATE STORM DRAIN INLET PER COA STD DWG 2206.

9. CONSTRUCT RETAINING WALL.

10. INSTALL STORM DRAIN PIPE TO WITHIN 5' OF BUILDING. SEE PLUMBING PLANS FOR CONTINUATION.

11. CONSTRUCT RETENTION POND.

12. FUTURE RETENTION POND.

13. INSTALL PRE-MANUFACTURED STORM DRAIN FITTING, SIZE(S) PER PLAN.

14. EXISTING UTILITY TO REMAIN, PROTECT IN PLACE.

15. CONNECT TO EXISTING STORM DRAIN INFRASTRUCTURE.

LEGEND

PROPERTY LINE

EXISTING EASEMENT

5320

PROPOSED INDEX CONTOUR

5319

PROPOSED INTERMEDIATE CONTOUR

5320

EXISTING INDEX CONTOUR

5319

EXISTING INTERMEDIATE CONTOUR

PROPOSED DRAINAGE SWALE

DIRECTION OF FLOW

WATER BLOCK/GRADE BREAK

PROPOSED STORM DRAIN MANHOLE

PROPOSED STORM DRAIN INLETS

PROPOSED STORM DRAIN CAP

W

PROPOSED WATER LINE

SS

PROPOSED SANITARY SEWER LINE

FM

PROPOSED SANITARY SEWER FORCE MAIN LINE

SD

PROPOSED STORM DRAIN LINE

PROPOSED RETENTION POND

NOTE: THESE PLANS ARE FOR ROUGH GRADING BIDDING PURPOSES ONLY. THE REMAINDER OF THE SITE IMPROVEMENTS ARE SHOWN FOR INFORMATION PURPOSES ONLY.

SITE KEY MAP

DEKKER  
PERICH  
SABATINI

ARCHITECTURE  
DESIGN  
INSPIRATION

Bohannon & Huston

www.bhinc.com 800.877.5332

ARCHITECT

QUIN MICHAEL BROWN

NEW MEXICO

23696

7-16-2021

PROFESSIONAL ENGINEER

ENGINEER

PROJECT

ABQ Studios Expansion  
SITE - NORTH

5650 UNIVERSITY BLVD SE  
ALBUQUERQUE, NM 87106

REVISIONS

DRAWN BY

KH

REVIEWED BY

OB

DATE

7/13/2021

PROJECT NO.

20-0072.008

DRAWING NAME

ROUGH GRADING  
PLAN

SHEET NO.

C108

OF